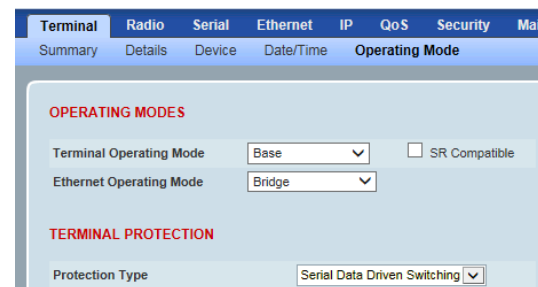


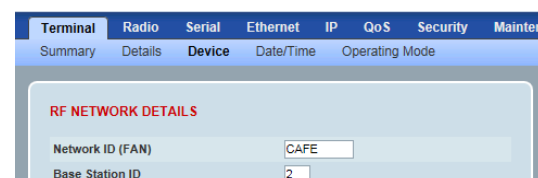
## 5. Setup the Aprisa SR+ Data Driven Protected Station

Login using the IP address of either the primary or secondary radio (do not use the PVIP address for login). All parameters will be automatically synchronized on both radios.

Set the Ethernet Operating Mode and the Compliance Mode required. The Protection Type should already be set to 'Serial Data Driven Switching'.

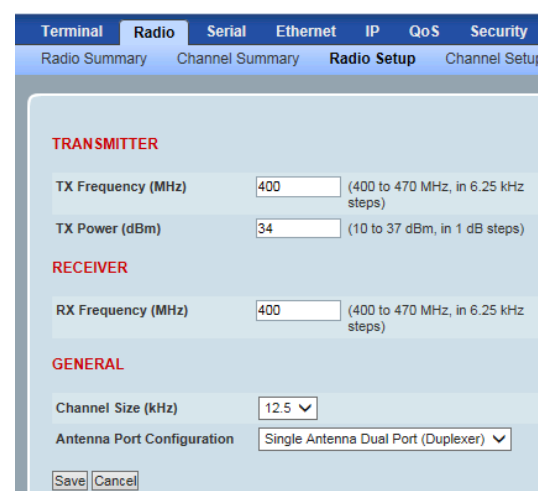


Set the unique radio Network ID to be the same in your entire network.



Set the Aprisa SR+ TX Frequency, RX Frequency, TX Power and Channel Size to comply with your site license.

Set the Antenna Port Configuration required.



You can now configure the remaining Data Driven Protected Station and network parameters and settings. Please refer to the Aprisa SR+ User Manual on the Information and setup CD for more information.

Reboot both Primary and Secondary radios.

The Aprisa SR+ Data Driven Protected Station is ready to operate.

## 6. Monitor the Aprisa SR+ Data Driven Protected Station signal strength

When the network is installed, the radio signal strength can be monitored on remote stations by setting the radio to Test Mode.

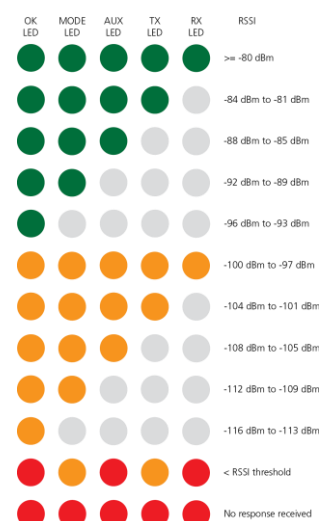
To enter Test Mode, press and hold the TEST button on front panel until all the LEDs flash green (about 3 - 5 seconds).

In Test Mode, the LED Display panel presents a real time visual display of the RSSI. This can be used to adjust the antenna for optimum signal strength.

Note: The response time is variable and can be up to 5 seconds.

To exit Test Mode, press and hold the TEST button until all the LEDs flash red (about 3 - 5seconds).

If the network is operating correctly, all the LEDs OK, MODE, AUX, TX and RX LEDs will be light green.



# Quick Start Guide

## Aprisa SR+ Data Driven Protected Station

### Contents

Follow these steps to setup your Aprisa SR+ Protected Station:

1. Check the box contents
2. Install the Aprisa SR+ Data Driven Protected Station and connect the protection earth
3. Connect the antenna and apply power to the Aprisa SR+ Data Driven Protected Station
4. Connect to the Aprisa SR+ Data Driven Protected Station
5. Set up the Aprisa SR+ Data Driven Protected Station
6. Monitor the Aprisa SR+ Data Driven Protected Station signal strength

## 1. Check the box contents \*

The Aprisa SR+ Data Driven Protected Station is shipped to you in a box containing the following:

(1) Aprisa SR+ Data Driven Protection Station containing the following:

- Two Aprisa SR+ radios mounted on a 19" rack mount shelf.
- Two duplexers mounted on a 19" rack mount shelf with fitted SMA to TNC cables for connection to the radios
- Two 2 pin female power connectors
- One 4 pin female remote control connector

(2) Information and setup CD containing the following:

- Aprisa SR+ System Software
- Aprisa SR+ Product Description and Aprisa SR+ User Manual
- Aprisa SR+ Software Release Notes
- Adobe® Reader® (for viewing the PDF files on the CD)
- TFTP server software
- USB Serial Driver
- Microsoft® Internet Explorer and Mozilla Firefox web browser

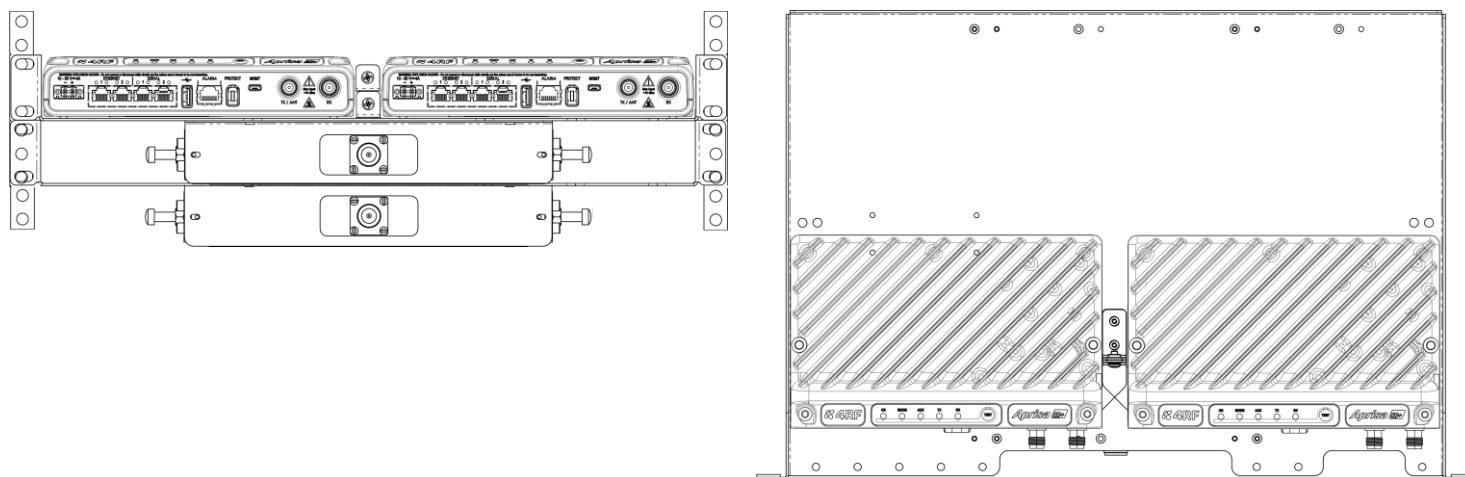
(3) USB Cable USB A to USB micro B, 1m

(used for Command Line Interface management - see the Aprisa SR+ User Manual)



## 2. Install the Aprisa SR+ Data Driven Protected Station and connect the protection earth

The Aprisa SR+ Data Driven Protected Station is designed to mount in a standard 19" rack.



The Aprisa SR+ Data Driven Protected Station has an earth connection point on the left top of each radio. Use the supplied M4 screw to earth the enclosure to a protection earth.

The antenna feeder cable should use grounding kits for lightning protection as specified or supplied by the coaxial cable manufacturer to properly ground or bond the cable outer.



## 3. Connect the antenna and apply power to the Aprisa SR+ Data Driven Protected Station

(1) Connect the antennas to the duplexer antenna ports (N-type female connector). If the antennas are not available, terminate the antenna ports with N-type male 50 ohm terminators (5 Watts min).

(2) The Aprisa SR+ Data Driven Protected Station is operated from a DC source of voltage between +10 VDC and +30 VDC (negative earth) and consumes up to 35 Watts. Two power connectors (Phoenix Contact 2 pin female) are supplied fitted to the radios. Wire your power source to the two power connectors (- / +) and plug the connectors into the radios. The connector screws can be fastened to secure the connectors.



(3) Turn your power source on.

All the LEDs on both radios will flash orange for one second and then change to:

- Active radio - the OK will light green, the TX and RX LEDs will light green (steady or flashing), the MODE and AUX LEDs will light green.
- Standby radio - the OK will light green, the TX and RX LEDs will light green (steady), the MODE LED will light orange and the AUX LED will light green.

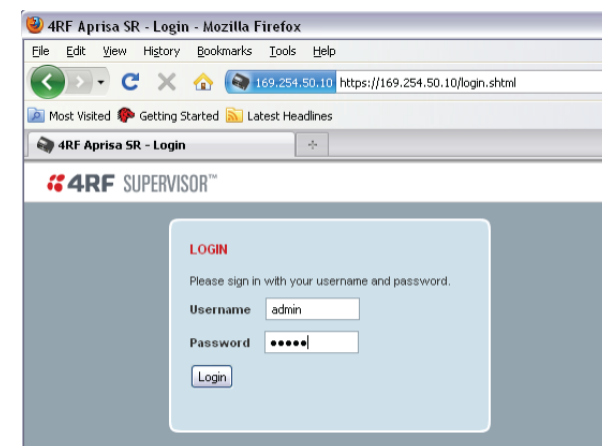
## 4. Connect to the Aprisa SR+ Data Driven Protected Station

Aprisa SR+ radio A (left radio) in the Data Driven Protected Station has a factory default IP address of 169.254.50.10 and Aprisa SR+ radio B (right radio) in the Data Driven Protected Station has a factory default IP address of 169.254.50.20, both with a subnet mask of 255.255.0.0.

- Set up your PC for a compatible IP address e.g. 169.254.50.1 with a subnet mask of 255.255.0.0.
- Connect your PC network port to radio A Ethernet port 1.
- Open a browser and enter <http://169.254.50.10>.

Note: The Aprisa SR+ has a self signed security certificate which may cause the browser to prompt a certificate warning. It is safe to ignore the warning and continue. The valid certificate is 'Issued By: 4RF-APRISA' which can be viewed in the browser.

- Login to radio A or radio B with the default login 'admin' and password 'admin'.



If the IP addresses of radios in the Data Driven Protected Station are unknown for some reason, they can be shown or changed via the Command Line Interface (CLI) on the radios MGMT USB ports.

- Connect your PC USB port to the primary Aprisa SR+ (A) MGMT USB port (see the Aprisa SR+ User Manual CLI section)
- Login to the radio with the default login 'admin' and password 'admin'.
- At the command prompt >> type 'cd APRISASR-MIB-4RF' and enter
- At the command prompt >> type 'ls Terminal' and enter to show the existing IP address
- At the command prompt >> type 'set termEthController1IpAddress xxx.xxx.xxx.xxx' and enter to change the IP address.

The Data Driven Protected Station is configured in the 4RF factory as a Data Driven Protected Station. If for some reason it is not setup as a Data Driven Protected Station, please see 'Creating a Data Driven Protected Station' in the Aprisa SR+ User Manual.