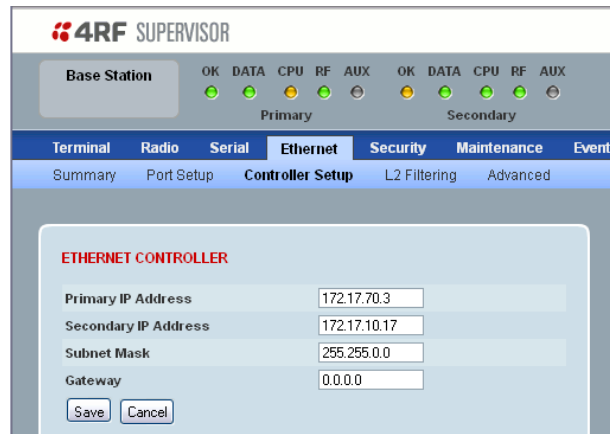


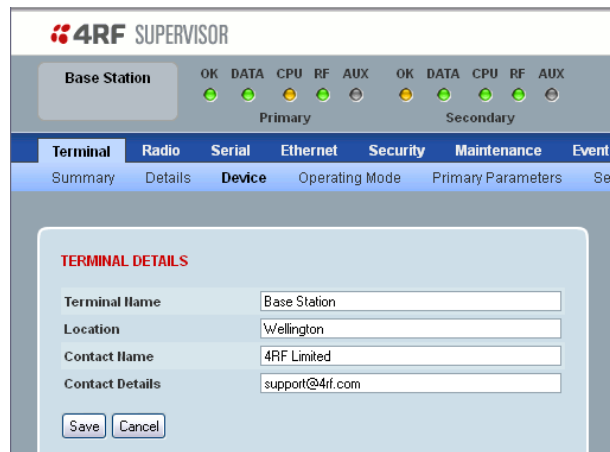
Each radio in the FAN (Field Area Network) and both radios in the Protected Station must be setup with unique IP addresses on the same subnet.



(2) Setup the Primary IP address, Secondary IP address, Subnet mask and Gateway to network compatible IP addresses.



(3) Configure the Terminal / Radio parameters and settings e.g. Terminal > Device settings



All parameters will be automatically synchronized on the Secondary radio.

Please refer to the Aprisa SR User Manual on the Information and setup CD for more information.

(4) Reboot both Primary and Secondary radios.

The Aprisa SR Data Driven Protected Station is ready to operate.



Quick Start Guide

Aprisa SR Data Driven Protected Station

Contents

Follow these steps to setup your Aprisa SR Data Driven Protected Station:

1. Check the box contents
2. Install the Aprisa SR Data Driven Protected Station
3. Apply power to the Aprisa SR Data Driven Protected Station
4. Set up the Aprisa SR Data Driven Protected Station

1. Check the box contents

The Aprisa SR Data Driven Protected Station is shipped to you in a box containing the following:

(1) Aprisa SR Data Driven Protection Station which includes:

- Two 1U rack mounting shelves
- Two Aprisa SR Dual Antenna Port Radios
- Two duplexers
- Four TNC to SMA 600 mm RF cables
- Two 4 pin female power connectors



Note: The picture demonstrates the RF cabling but the product is delivered with the RF cables separately packaged.

(2) Information and setup CD containing the following:

- Aprisa SR System Software
- Aprisa SR Product Description
- Aprisa SR User Manual
- Aprisa SR Software Release Notes
- Adobe® Reader® (for viewing the PDF files on the CD)
- USB Serial Driver
- Microsoft® Internet Explorer web browser
- Mozilla Firefox web browser



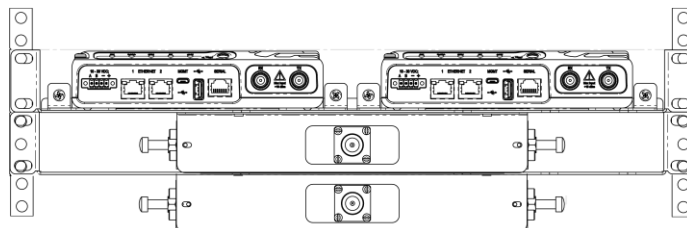
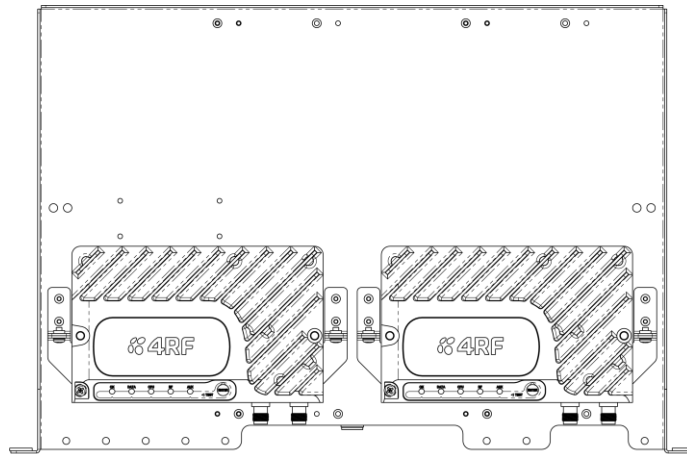
(3) USB Cable USB A to USB micro B, 1m

(used for Command Line Interface management see Aprisa SR User Manual)



2. Install the Aprisa SR Data Driven Protected Station

The Aprisa SR Data Driven Protected Station is designed to mount in a standard 19" rack on two 1U rack mounting shelves.



3. Apply power to the Aprisa SR Data Driven Protected Station

(1) Connect the antennas to the duplexer antenna ports (N-type female connector). If the antennas are not available, terminate the antenna ports with N-type male 50 ohm terminators (5 Watts min).

(2) The Aprisa SR Data Driven Protected Station is operated from a DC source of voltage between +10 VDC and +30 VDC (negative earth) and consumes up to 35 Watts. Two power connectors (Phoenix Contact 4 pin female) are supplied fitted to the radios. Wire your power source to the two power connectors (- / +) and plug the connectors into the radios. The connector screws can be fastened to secure the connectors.

(3) Turn your power source on.

All the LEDs on both radios will flash orange for one second and then change to OK, DATA, CPU and RF LEDs will light green and the AUX LED will be off.



4. Set up the Aprisa SR Data Driven Protected Station

Setup both Protected Station radios individually with the following procedure:

(1) Login to radio A.

Aprisa SR radio A (left radio) in the Protected Station has a factory default IP address of 169.254.50.10 and Aprisa SR radio B (right radio) in the Protected Station has a factory default IP address of 169.254.50.20, both with a subnet mask of 255.255.0.0.

- Set up your PC for a compatible IP address e.g. 169.254.50.1 with a subnet mask of 255.255.0.0.
- Connect your PC network port to radio A Ethernet port 1.
- Open a browser and enter <http://169.254.50.10>.

Note: The Aprisa SR has a self signed security certificate which may cause the browser to prompt a certificate warning. It is safe to ignore the warning and continue. The valid certificate is 'Issued By: 4RF-APRISA' which can be viewed in the browser.

- Login to radio A with the default login 'admin' and password 'admin'.

