

2572-OPC I/O Server Quick-Start Guide

Summary

OPC (OLE for Process and Control) servers provide a standardized method of allowing multiple industrial applications to share data in a quick and robust manner. The OPC server and LinkMaster products provided in this package have been designed to meet the demanding requirements found in the industrial environment.

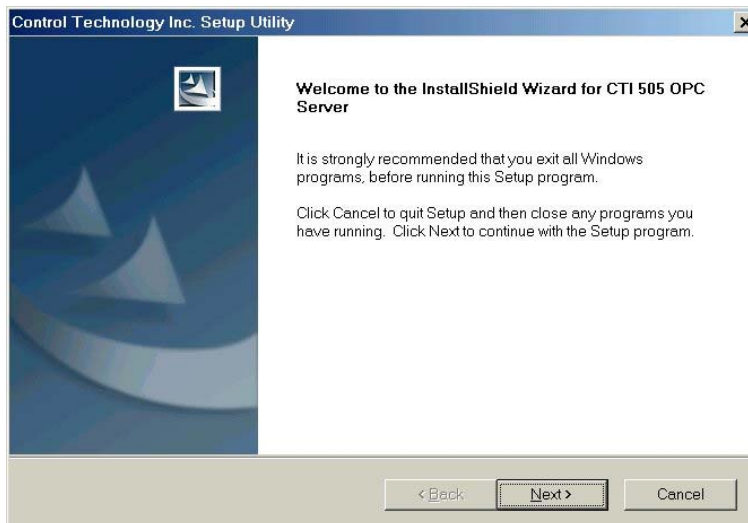
This OPC server includes a main server program which provides all of the OPC and DDE connectivity and user interface functions, and a plug-in communications drivers for the CTI 2572 Ethernet Module.

OPC technology reflects the move from closed proprietary solutions to open architectures that provide more cost-effective solutions based on established standards.

Installing the OPC Server on Your PC

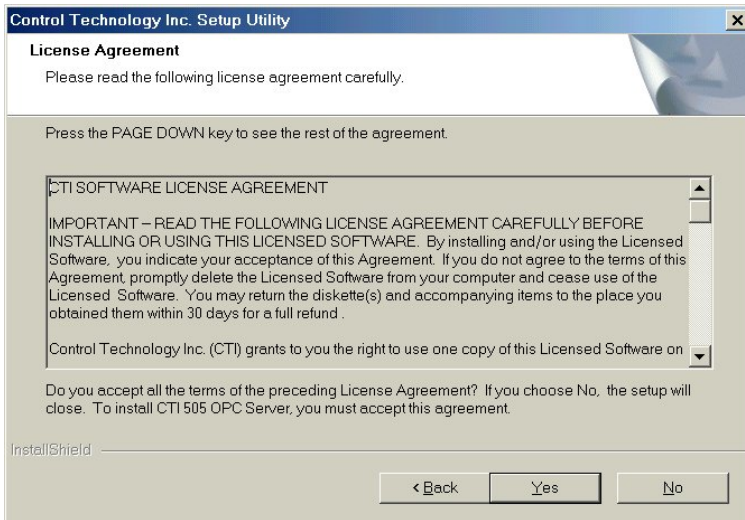
The following instructions will explain how to install the server on your PC.

1. Place the provided CD-ROM in your CD drive. The CD should automatically run the installation front end. If it does not then browse your CD drive in Explorer and double click on "setup.exe".
2. Click on the Next button to start the installation.

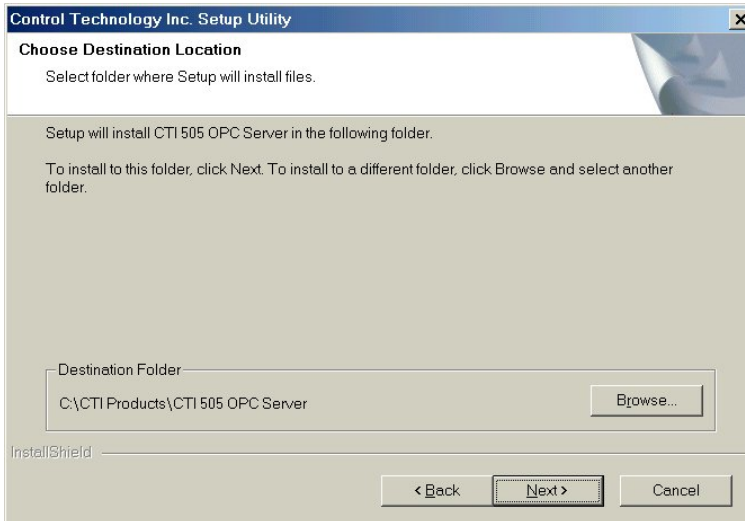


3. Read and accept the license agreement when prompted.

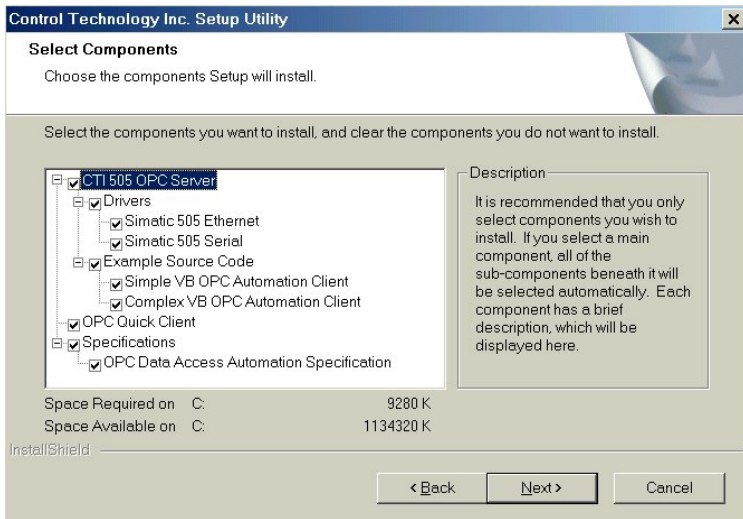




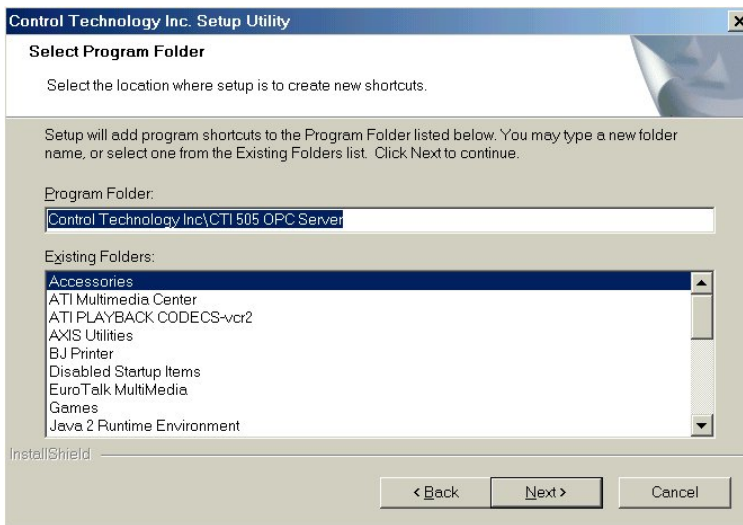
4. Select the destination directory for installation of the server.



5. Select the server components to be installed.

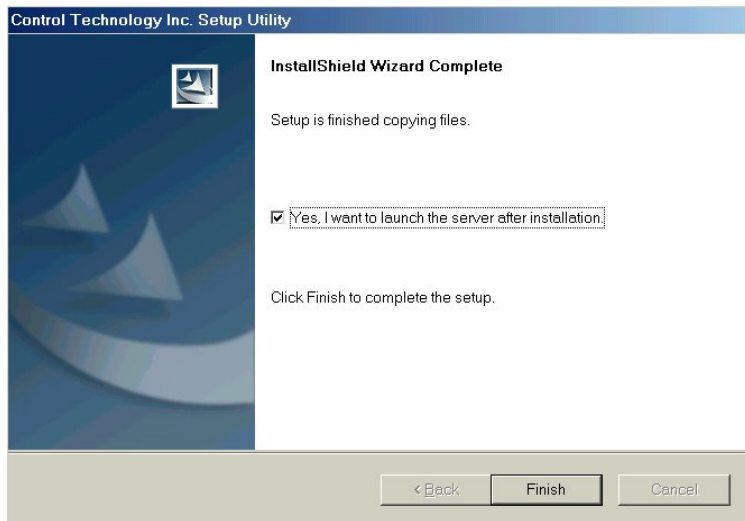


6. Select the folder where shortcuts will be located.



7. When file copy is complete, select Finish to complete the installation.





OPC Connectivity Guide

Our OPC Connectivity Guide contains more information about how to connect to the server from third party clients like WonderWare, RSView, Cimplicity, Genesis, PanelMate PC, Think n' Do, iFix32 and WinCC. This guide can be downloaded at

ftp://ftp.controltechnology.com/public/Download/2572opc/OPC_Connectivity.pdf

Once you install the server and 2572 driver you can view the server help by selecting Help|Contents or Help|Search in the server main menu. Driver help can be selected from the server help menu.

Driver Documentation

The driver help files provide the basic information needed to establish communications to the devices supported by that driver.

Upgrading Your Product

The current version of the server can always be found at <http://www.controltechnology.com>. Upgrading to the newest version is as simple as downloading the current demo and installing it over your current install. The install set will automatically upgrade those files that need upgrading. Your license and project files are completely safe. Free upgrades are provided within a product generation only, if you have any questions contact CTI.

Licensing and Registering a Driver

The driver initially installs in demo mode. To get full operation, you need to license and register the driver:

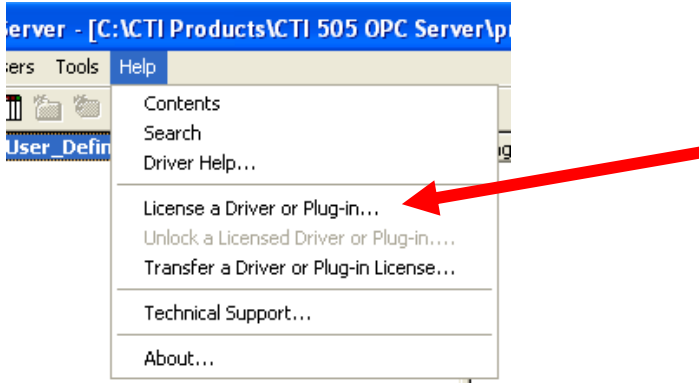


Control Technology Inc.

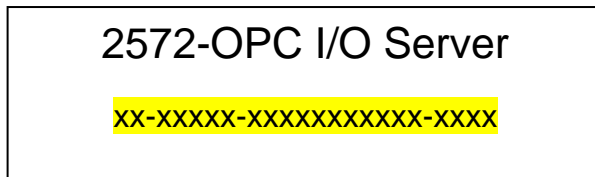
5734 Middlebrook Pike, Knoxville, TN 37921
Phone: 865/584-0440 Fax: 865/584-5720

05-Jan-2008

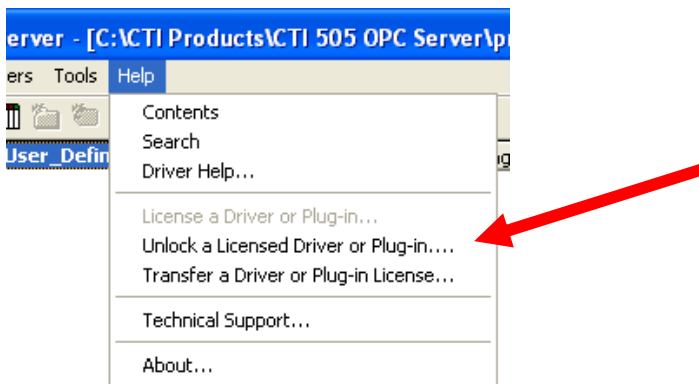
1. If the server is not already running then you should start it now.
2. From the Server main menu click on Help | License a Driver or Plug-in..., as indicated by the arrow.



3. You will now be asked to enter the Serial Number for the Driver License you ordered. This number can be found on the OPC Server License Key label attached to the back of the CD case. Enter the number and click OK.



4. If the S/N is valid you will get confirmation that the driver has been licensed and now may be unlocked.
5. To unlock the driver you may answer yes to the dialog prompt to start. If you answer no, then within the next 10 days you can Select Help | Unlock a Licensed Driver or Plug-in..., from the Server main menu as indicated by the arrow.

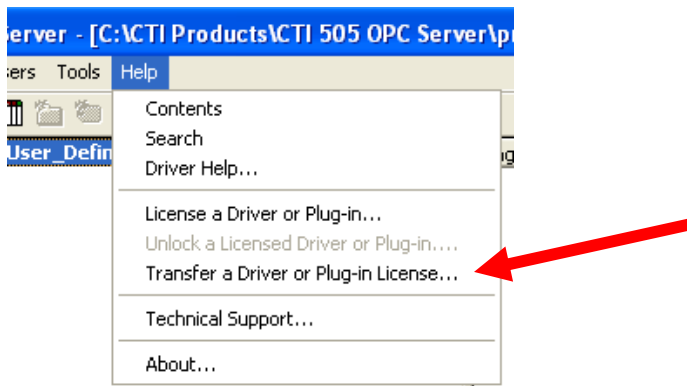


6. You will see your driver unlock window, which displays the S/N that you entered and a Computer ID. You must now contact CTI Sales to receive a password for your installation. You can do this by emailing sales@controltechnology.com or by calling us at 800-537-8398 in the U.S. When you call or email, you will need to supply your serial number and the Computer ID.
7. Enter the password provided by CTI and click OK to accept it.
8. If you provided the correct numbers and in turn entered the password correctly you should now get verification messages that the driver or drivers have been successfully unlocked.
9. Now stop and restart the server project so that the license will take effect.

Transferring a License

As you may have noticed we do provide the ability to transfer a registered license to another PC. **You cannot transfer a license that has not been registered.** The following steps explain how to transfer a license. Detailed instructions on how to transfer a license can be found in the Server help file.

1. The transfer process will always start on the PC that the license will be transferred to. We will refer to this PC as the Target PC.
2. First make sure the server and appropriate driver is installed on the Target PC. *You may need to update the Source PC.*
3. Next start the Server and in the Server main menu select Help | Transfer a Driver or Plug-in License.....



4. Follow the instructions in the License Transfer Wizard.
5. Accept the License Agreement. If you do not accept it the transfer will be ended.
6. Select the Target Option and then select the driver whose license you will be transferring.
7. Next you will select the floppy drive where you will prepare the transfer diskette and click the Prepare button.
8. Once the diskette has been prepared remove it from the floppy drive and take it to the PC containing the registered license. We will refer to this as the Source PC. *You must leave the Wizard open on the Target PC.*



9. Insert the diskette into the floppy drive.
10. On the Source PC run the server but do not select a project. Select Help|Transfer a Driver or Plug-In License... from the Server main menu. *Note: If the Transfer option is grayed out check to see if a software client is connected to the server, a project is loaded with the driver, or the license was never registered. The problem will have to be corrected to continue.*
11. You will need to accept the License Agreement again.
12. Next select the Source option and select the driver license you will transfer.
13. Next you will prepare the diskette for the Target PC. This function will move the license to the floppy disk.
14. Once the process is complete remove the diskette and place back in the floppy drive of the Target PC.
15. Complete the steps to transfer the license from the diskette to the Target PC.
16. The transfer process is complete. Your driver should be fully registered.

Help Information

Please refer to the following sources for useful help information:

- The Driver help files contain basic information on setting up the devices for communications, supported device addresses, as well as detailed descriptions of error codes and possible solutions.
- The Server help file provides you with information on the various components and wizards in the server.
- The OPC Connectivity guide provides basic information on connecting to the server from 3rd party client software.



Control Technology Inc.

5734 Middlebrook Pike, Knoxville, TN 37921
Phone: 865/584-0440 Fax: 865/584-5720

CTI SOFTWARE LICENSE AGREEMENT

IMPORTANT -- READ THE FOLLOWING LICENSE AGREEMENT CAREFULLY BEFORE INSTALLING OR USING THIS LICENSED SOFTWARE. By installing and/or using the Licensed Software, you indicate your acceptance of this Agreement. If you do not agree to the terms of this Agreement, promptly delete the Licensed Software from your computer and cease use of the Licensed Software. You may return the diskette(s) and accompanying items to the place you obtained them within 30 days for a full refund .

Control Technology Inc. (CTI) grants to you the right to use one copy of this Licensed Software on a single computer under the terms of this agreement, including the terms of the accompanying Limited Software Warranty.

This Licensed Software is owned by CTI and is protected by United States copyright laws and international treaty provisions. You do not obtain title to the Licensed Software or any copyrights or proprietary rights in the Licensed Software. You may not transfer, sub-license, rent, lease, convey, modify, translate, reverse-engineer, decompile, or disassemble the Licensed Software.

You may not copy this Licensed Software except to transfer one copy of this Licensed Software to a single hard disk or make a copy for archival or backup purposes.

You may terminate this agreement at any time by destroying the software and documentation. If you fail to comply with any term or condition of this agreement, CTI can terminate this agreement upon written notification to you.

CTI LIMITED SOFTWARE WARRANTY

This software is provided "as is" without warranty of any kind, either express or implied, including, but not limited to, the implied warranty of merchantability and fitness for a particular purpose. You assume the entire risk regarding the quality and performance of the software. CTI does not warrant that the functions contained in the software will meet your requirements and needs or that the operations of the software (or any portion thereof) will be error free or uninterrupted.

During the first 30 days, if you determine that the software does not meet your requirements and you destroy all copies of the software and cease using it, you may return the diskette(s) and accompanying items to the place from which you obtained them for a full refund.

CTI does warrant the diskette(s) on which the software is provided to be free from defects in workmanship and materials under normal use for a period of ninety (90) days from the date of delivery to you as evidenced by your receipt or invoice.

CTI'S ENTIRE LIABILITY AND YOUR ONLY REMEDY SHALL BE THE REPLACEMENT OF ANY DISKETTE(S) WHICH IS DEFECTIVE IN WORKMANSHIP OR MATERIALS AND WHICH IS RETURNED TO CTI OR AN AUTHORIZED CTI



Control Technology Inc.
5734 Middlebrook Pike, Knoxville, TN 37921
Phone: 865/584-0440 Fax: 865/584-5720

05-Jan-2008

DISTRIBUTOR WITH A COPY OF YOUR RECEIPT OR INVOICE. IF CTI IS UNABLE TO DELIVER TO YOU A DISKETTE(S) FREE FROM DEFECTS IN WORKMANSHIP OR MATERIALS, YOU MAY RETURN THE SOFTWARE AND CTI WILL REFUND WHAT YOU PAID FOR THE SOFTWARE. IN NO CASE SHALL CTI'S LIABILITY EXCEED THE PURCHASE PRICE FOR THE SOFTWARE.

IN NO EVENT WILL CTI BE RESPONSIBLE OR LIABLE FOR ANY DAMAGES, INCLUDING ANY LOST PROFITS OR OTHER INCIDENTAL OR CONSEQUENTIAL DAMAGES RESULTING FROM YOUR USE OF THE CTI SOFTWARE OR RESULTING FROM YOUR INABILITY TO USE SUCH SOFTWARE EVEN IF CTI OR AN AUTHORIZED CTI DISTRIBUTOR HAS BEEN ADVISED OF THE POSSIBILITY OF SUCH DAMAGES OR FOR ANY CLAIM BY ANY OTHER PARTY.

SOME STATES DO NOT ALLOW THE EXCLUSION OR LIMITATION OF INCIDENTAL OR CONSEQUENTIAL DAMAGES FOR CONSUMER PRODUCTS, SO THE ABOVE LIMITATIONS OR EXCLUSIONS MAY NOT APPLY TO YOU. THIS WARRANTY GIVES YOU SPECIFIC LEGAL RIGHTS, AND YOU MAY ALSO HAVE OTHER RIGHTS WHICH VARY FROM STATE TO STATE.



Control Technology Inc.

5734 Middlebrook Pike, Knoxville, TN 37921
Phone: 865/584-0440 Fax: 865/584-5720

05-Jan-2008