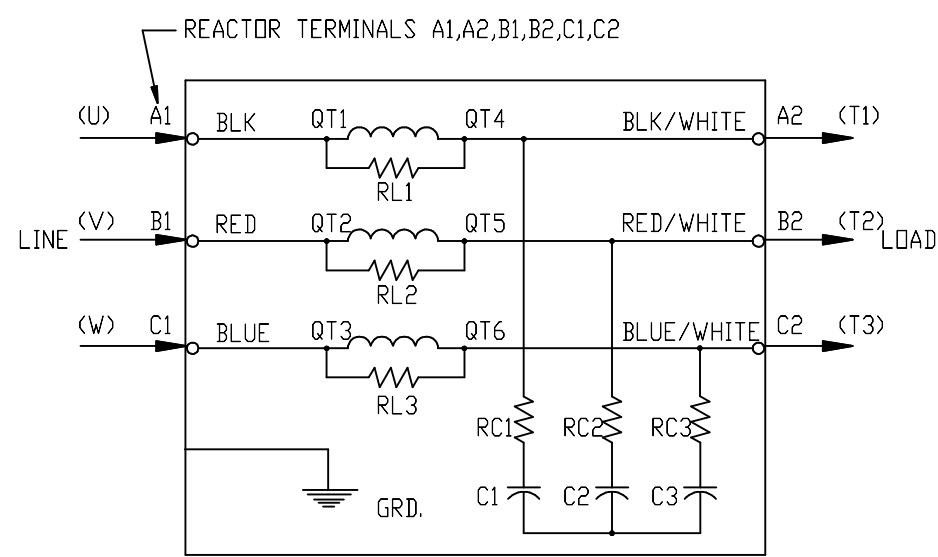


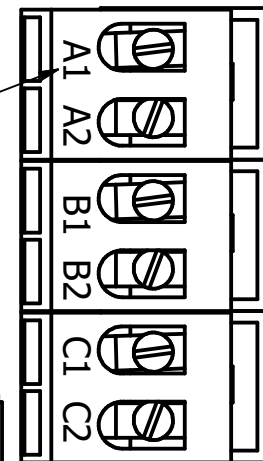
See V1K Installation Guide For Terminal Wire Size And Torque Information.

Note: Maintain Clearance of 3 Inches On All Sides To Other Equipment.

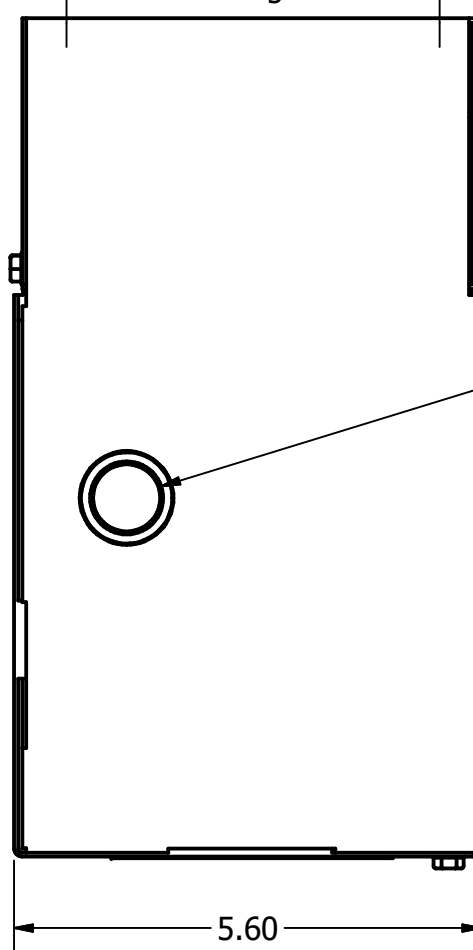


REACTOR AND BOARD ASSEMBLY CONNECTIONS

(Customer Connections) Markings On Terminal Block For Reference Only.

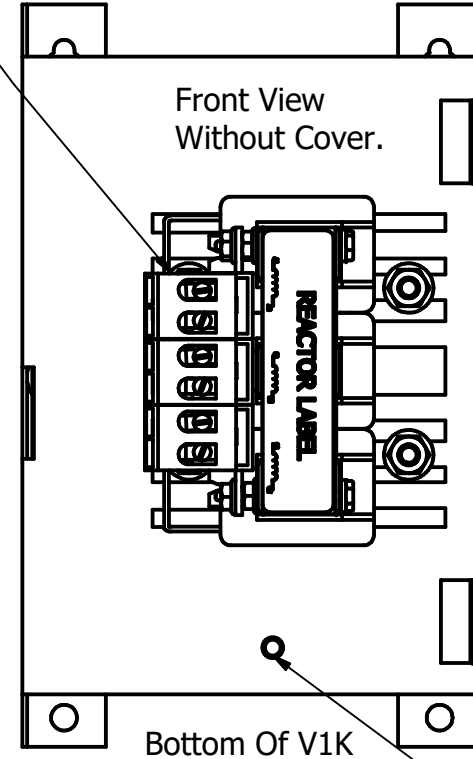


Back Of V1K Mounted Against Wall



7/8-1-1/8 Knockouts 3 Places. For Customer Entry Options.

Top Of V1K

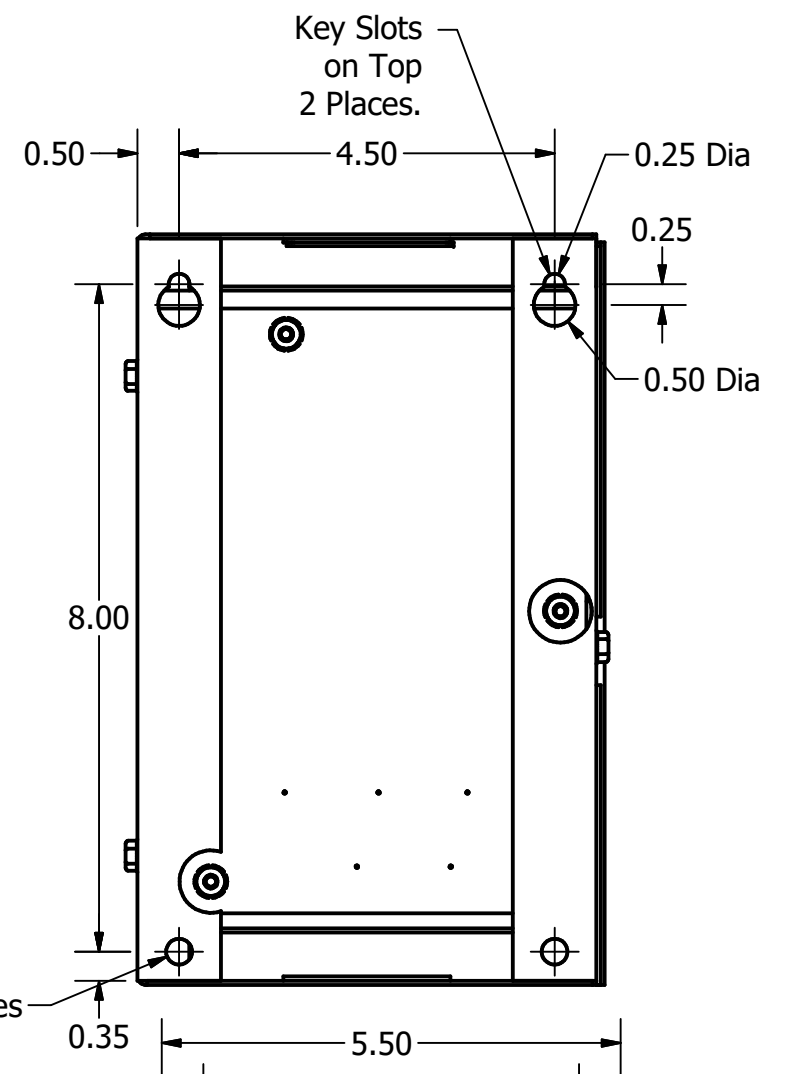


Bottom Of V1K

(0.25-20, Ground Stud)

V1K Part Number	Max Voltage	Amps	Phase	Weight (LBS)
V1K2A01EX	600	2	3	11
V1K3A01EX	600	3	3	11
V1K4A01EX	600	4	3	11
V1K6A01EX	600	6	3	11
V1K8A01EX	600	8	3	11
V1K12A01EX	600	12	3	11

Mounting Orientation-Up

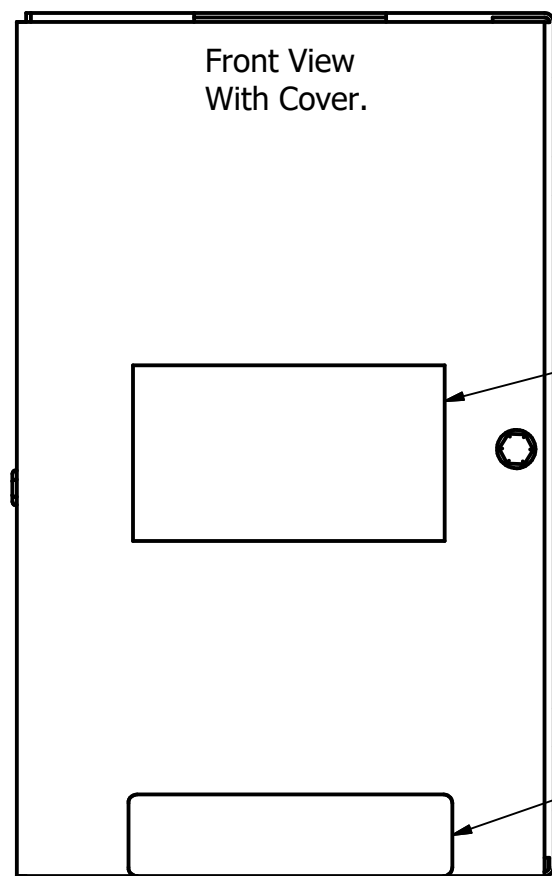


0.31 Dia Holes 2 Places

Knockout

0.31 Dia Holes 4 Places.

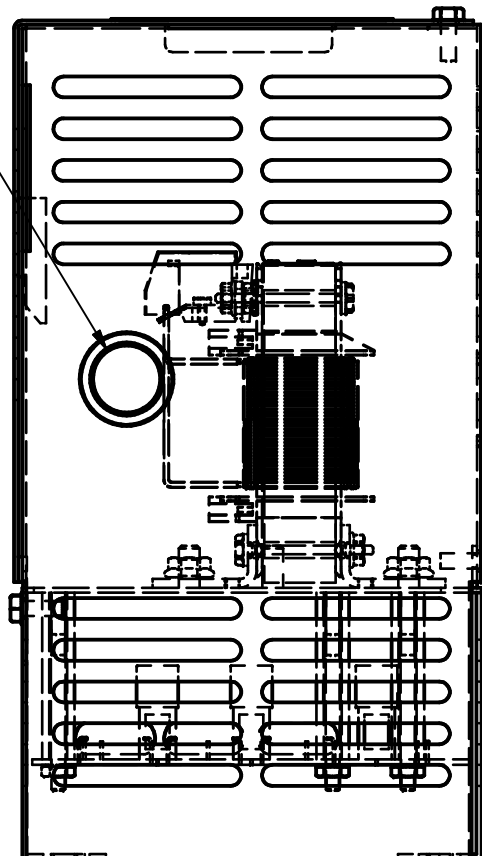
Front View With Cover.



Product Label.

Information Label.

Knockout



Customer Is Responsible For Installation To Meet All National And Local Electrical Codes.

THE INFORMATION AND DESIGNS CONTAINED IN THIS DRAWING ARE CONFIDENTIAL AND THE PROPRIETARY PROPERTY OF ALLIED MOTION TECHNOLOGIES INC. AND ITS SUBSIDIARIES. NEITHER THIS DESIGN NOR ANY INFORMATION CONTAINED IN THIS DRAWING MAY BE REPRODUCED OR DISCLOSED TO OTHERS WITHOUT THE EXPRESS WRITTEN CONSENT OF ALLIED MOTION TECHNOLOGIES INC. AND ITS SUBSIDIARIES.

TOLERANCES (EXCEPT AS NOTED)			
DECIMAL			
.XX ± .25			
.XXX ± .10			
FRACTIONAL			
± 1/32			
ANGULAR			
± 1°			

TCL
An Allied Motion Company

W132N10611 Grant Drive
Germantown, WI 53022
© 2021 TCL, LLC

V1K, Enclosed, Type 1, EX
2 Amps To 12 Amps

DRN BY: JRN DATE: 08/02/21
SCALE: TO FIT APRVD: 109002DG
SIZE: C

SHT. 1 OF 1