

[Tech Note 1069](#)

How to Create a Modern InTouch Application or Convert a Standalone InTouch Application to a Modern InTouch Application

All Tech Notes, Tech Alerts and KBCD documents and software are provided "as is" without warranty of any kind. See the [Terms of Use](#) for more information.

Topic#: 002920

Created: December 2014

Introduction

This *Tech Note* provides the steps to create a Modern InTouch Application or to convert a Stand-Alone Application to a Modern Application.

Application Version:

- InTouch 2014 R2 (version 11.1)

How to create a new Modern InTouch Application

1. Open InTouch Application Manager
2. Click File > New or click the ICON in Figure 1 (below) to create a new InTouch application.

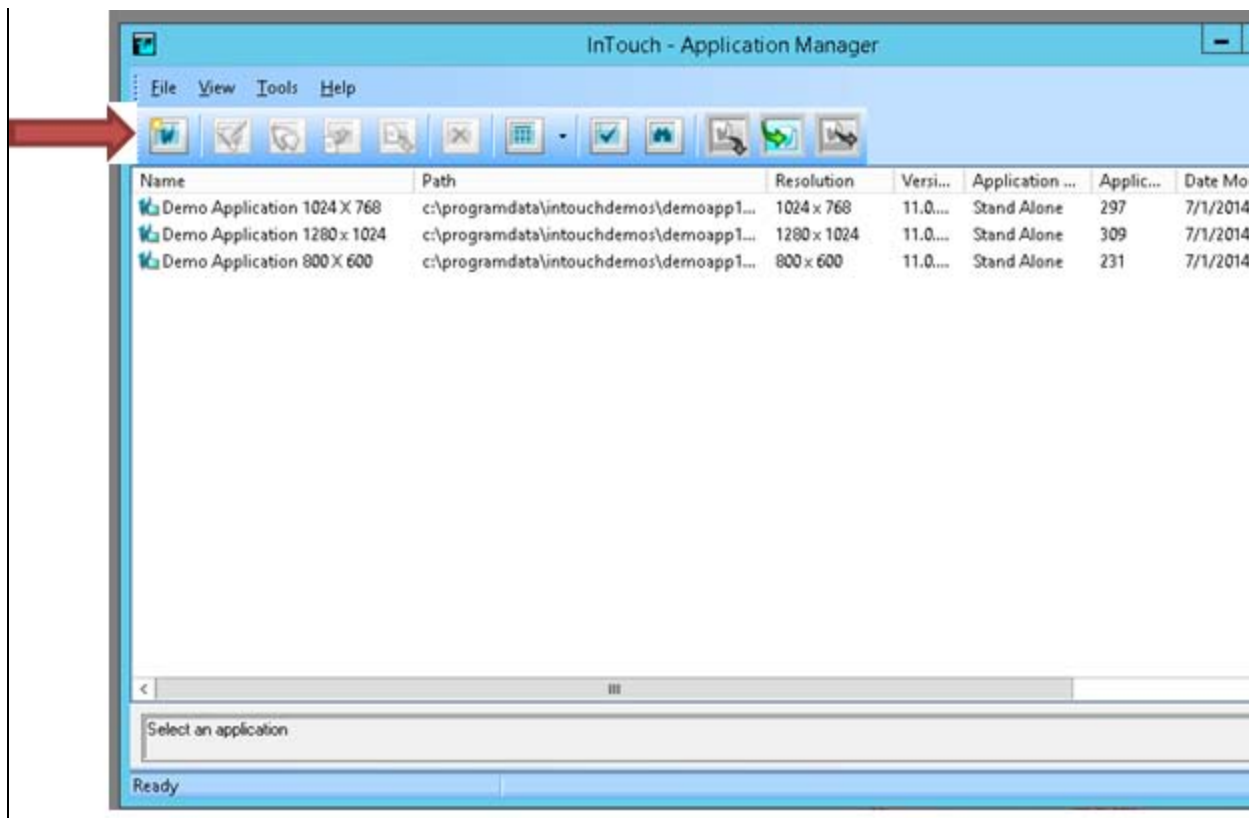


FIGURE 1: CREATE A NEW INTOUCH APPLICATION

3. Click **Modern InTouch Application**.

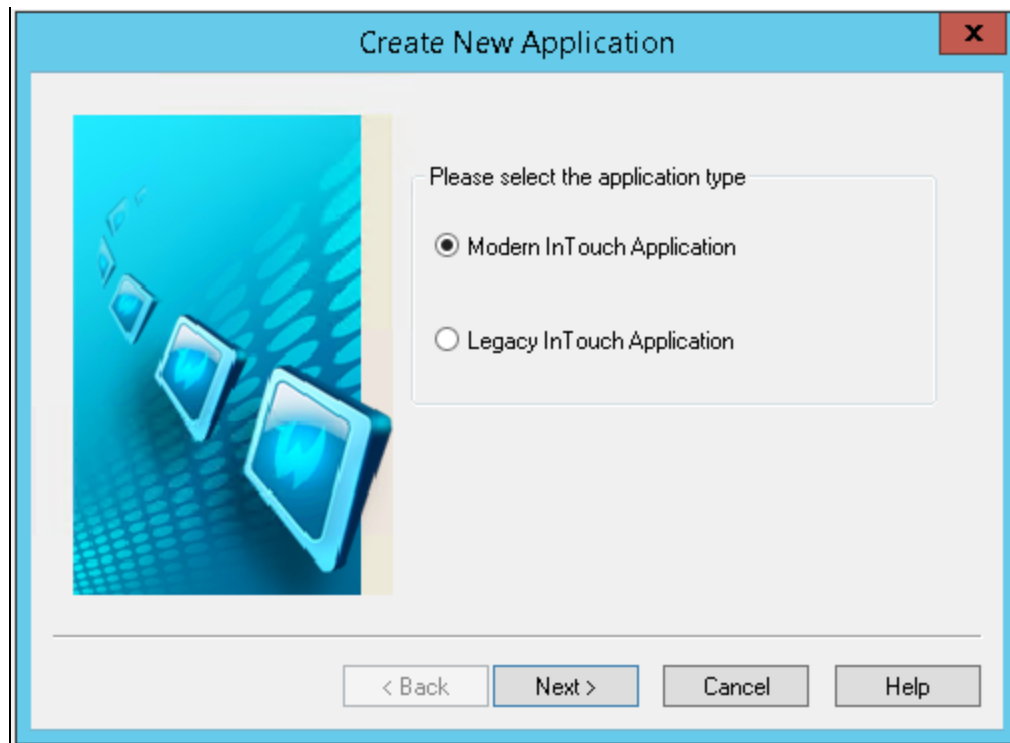


FIGURE 2: MODERN INTOUCH APPLICATION OPTION

4. Click **Next**.
5. Select the directory path for the application (Figure 3 below):

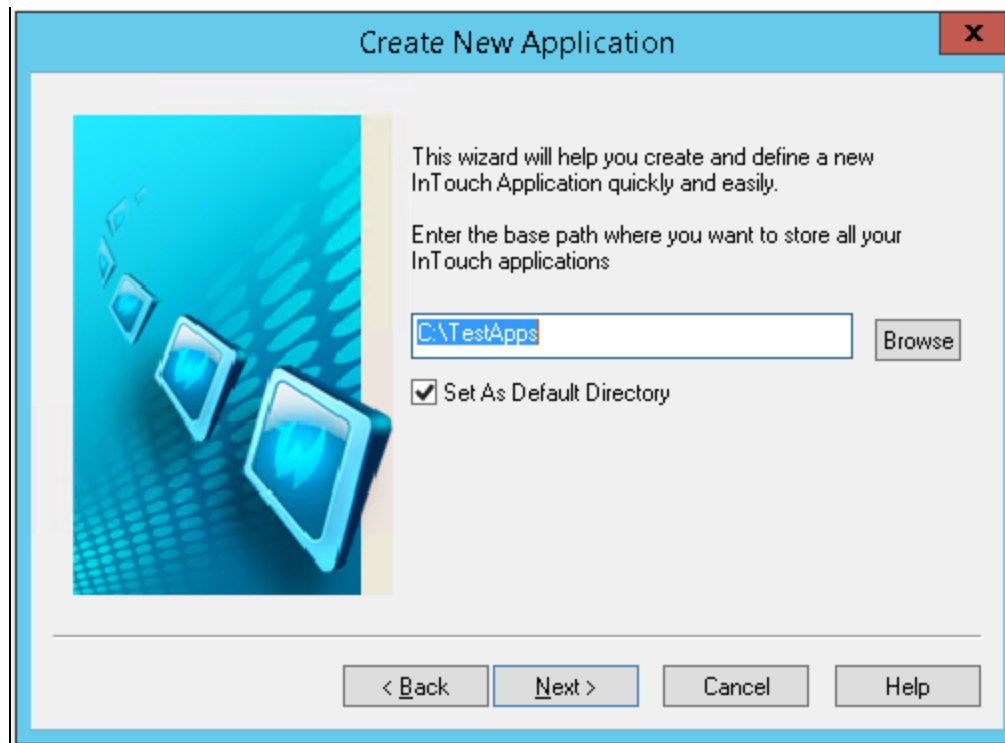


FIGURE 3: APPLICATION FILE/DIRECTORY PATH

6. Click **Next**.
7. Type the directory name (Figure 4 below).

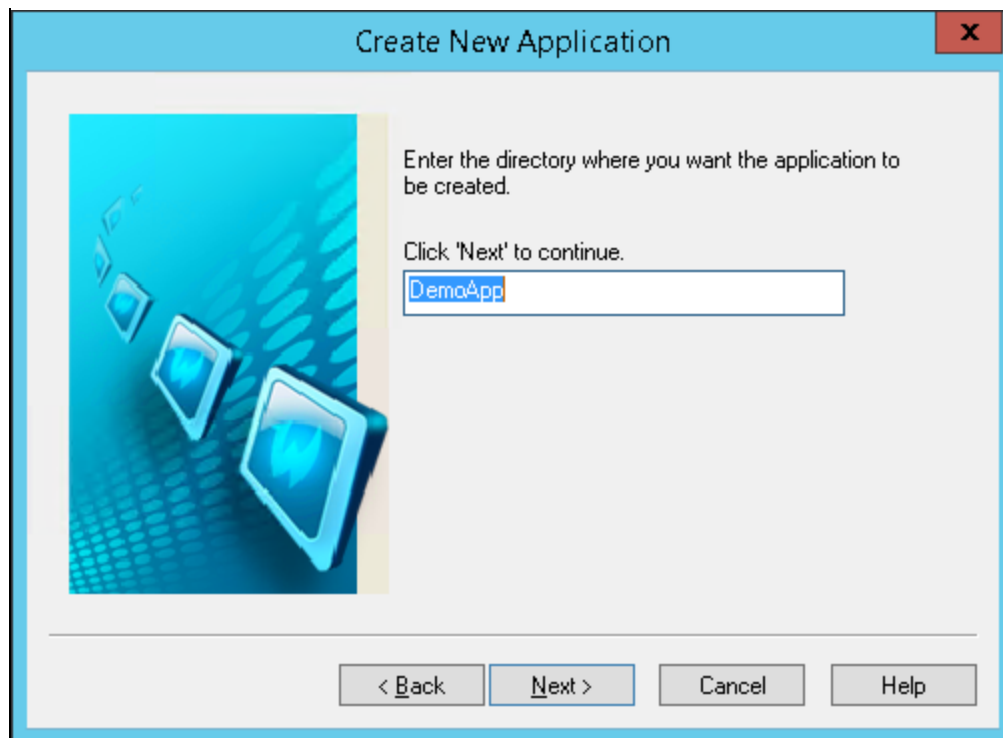


FIGURE 4: APPLICATION FOLDER/DIRECTORY NAME

8. Click **Next**.
9. Type a name and description of the InTouch Application.

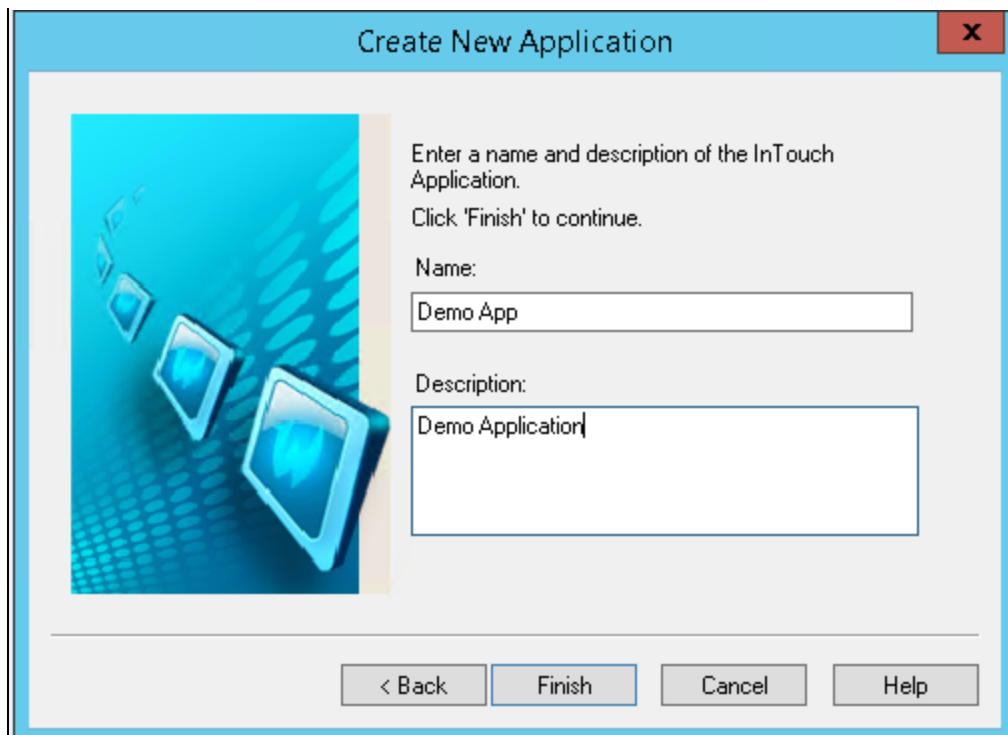


FIGURE 5: APPLICATION NAME AND DESCRIPTION

10. Click **Finish**.

The Create New Application process begins (Figure 6 below).

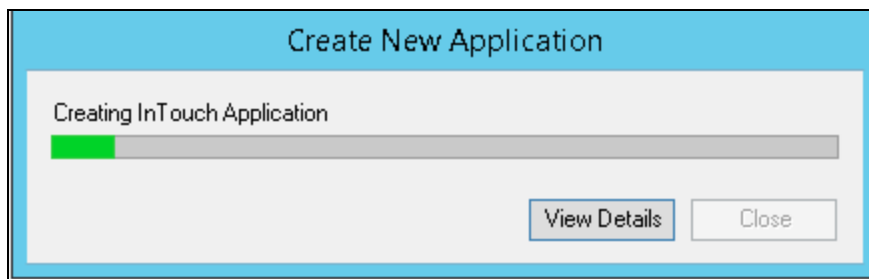


FIGURE 6: CREATE NEW APPLICATION

11. Click **View Details** to display the process details.

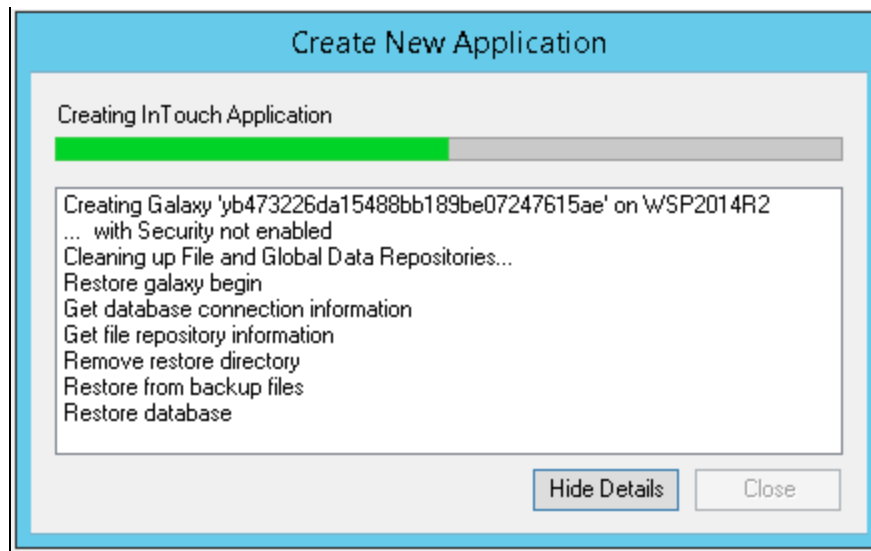


FIGURE 7: DETAILS

12. After the application is created, double-click it or Click on the WindowMaker ICON on InTouch Application Manager.

When you open the Modern InTouch Application you see the tool bar icon for **ArchestrA Graphics**, and in the Project View you can see ArchestrA Graphic Toolbox (Figure 8 below).

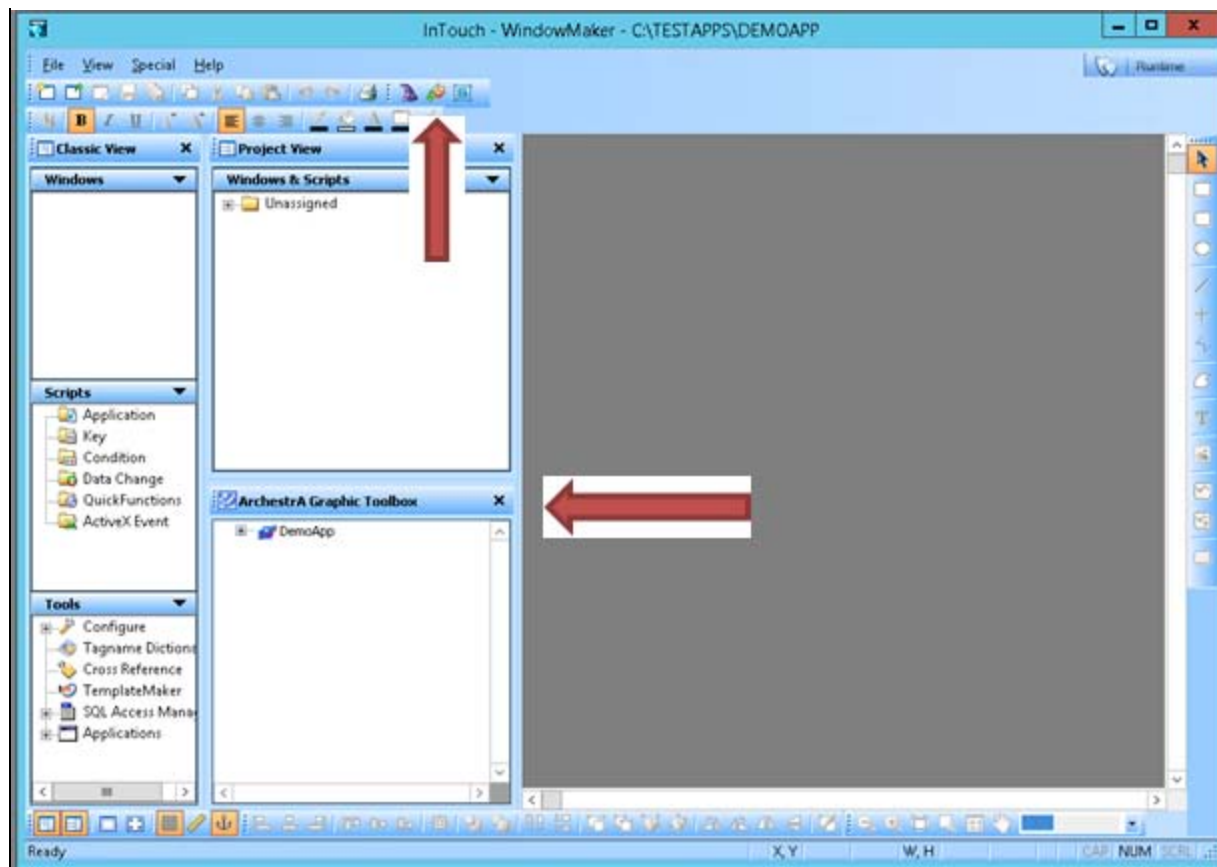


FIGURE 8: ARCHESTR A GRAPHICS TOOL AND ARCHESTR A GRAPHIC TOOLBOX

Adding ArchestrA Graphics to the Modern Application:

1. Create a new window and add the ArchestrA Symbol.
2. You can add ArchestrA Graphics into an InTouch Window. You can use the button to Embed ArchestrA Graphics, which are located in the tool set or accessed by right-clicking, then selecting **Embed ArchestrA Graphics**.

The following example shows some of the Situational Awareness Library graphics (Figure 9 below).

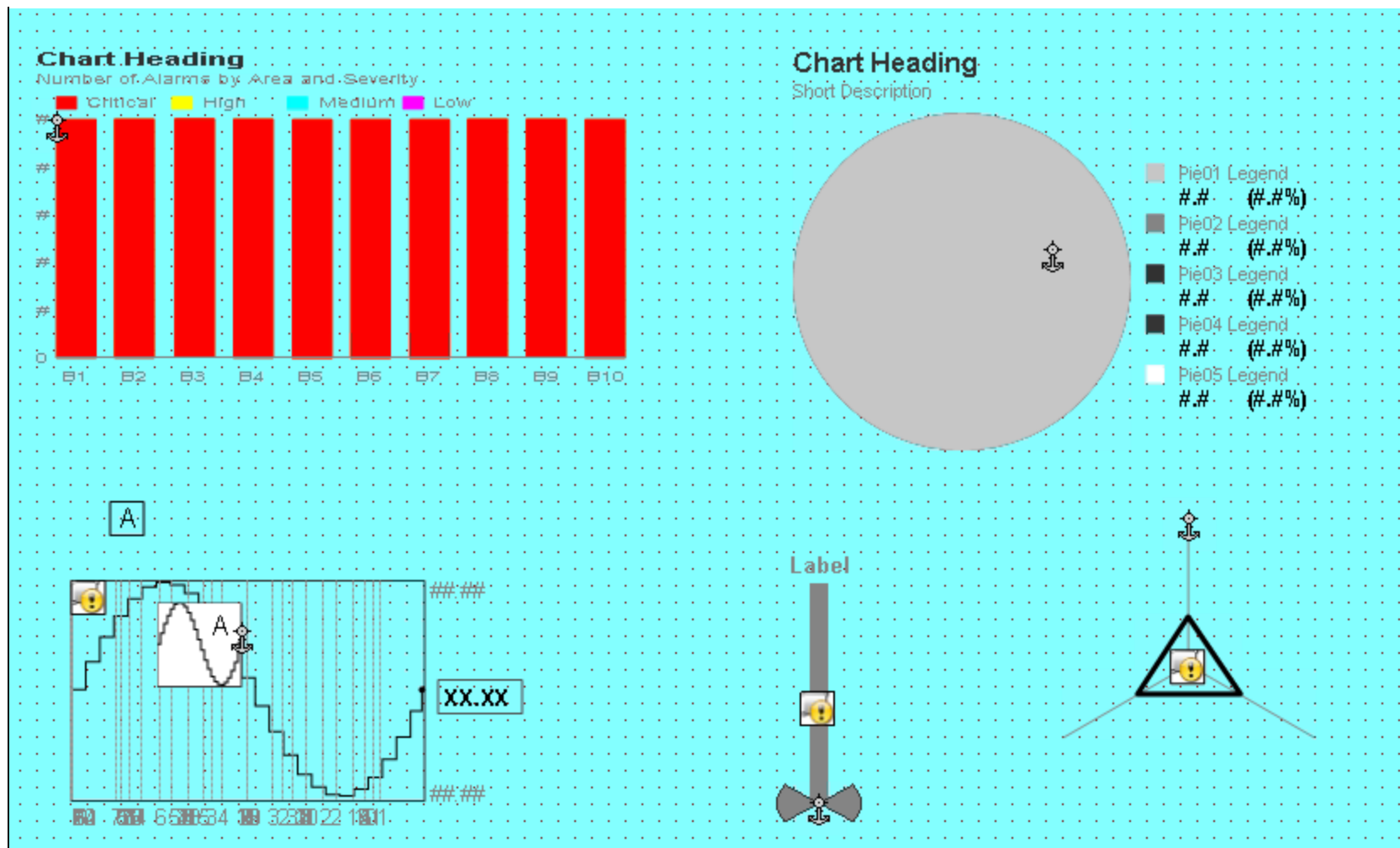


FIGURE 9: SITUATIONAL AWARENESS GRAPHICS IN THE INTouch WINDOW

Converting a Stand-Alone InTouch Application to Modern InTouch Application

The following example uses a stand-alone application from InTouch 10.6 that is migrated to InTouch 11.1. This process converts the Stand-Alone InTouch Application to Modern InTouch Application.

Steps 1-9 are pre-requisites for converting a Modern Application from a Stand-Alone InTouch Application.

1. Open WindowMaker on the Stand-Alone InTouch application. You will see the following message:

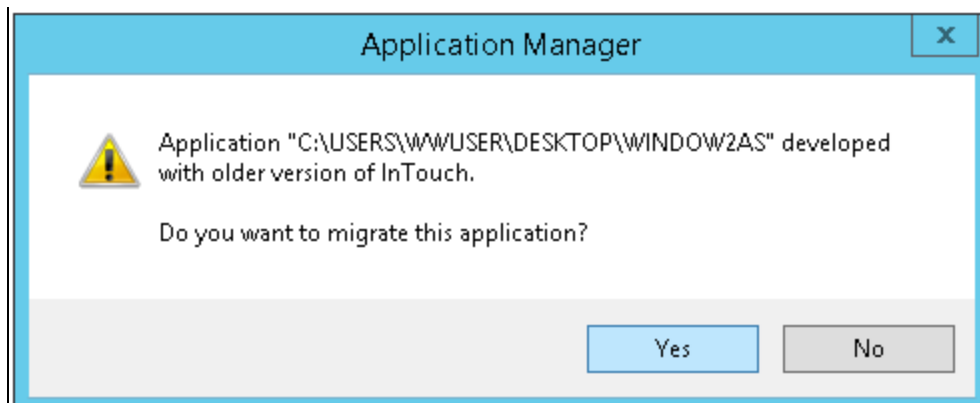


FIGURE 10: APPLICATION MIGRATION MESSAGE

2. Click **Yes**. The **...enable ArchestrA Graphics...** message message appears:

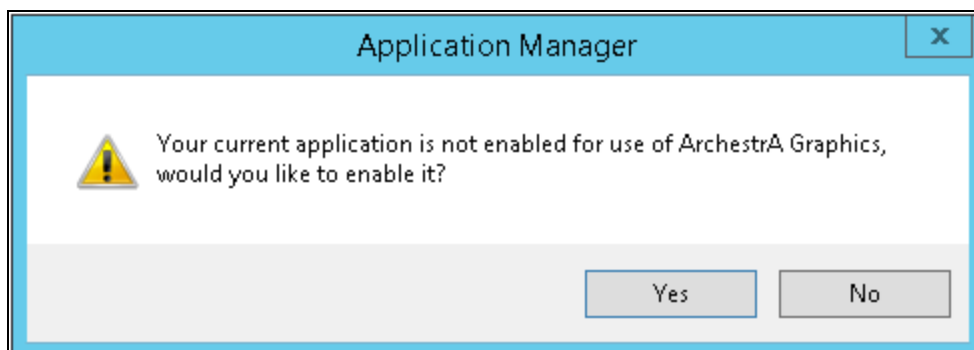


FIGURE 11: ENABLE ARCHESTRA GRAPHICS

3. Click **Yes**. The **...backup this application...** message appears:

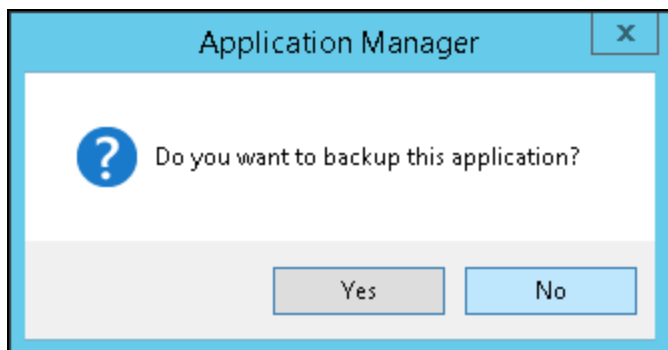


FIGURE 12: BACKUP THIS APPLICATION

4. Click **Yes** or **No**. For this example we click **No**. The Create New Application dialog appears. In the background it is including all the ArchestrA Symbols in the application.

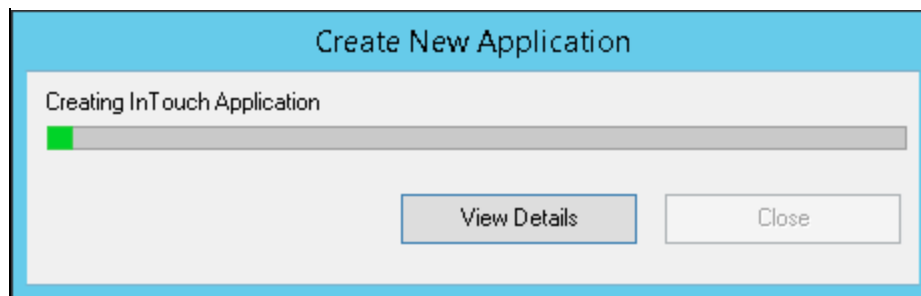


FIGURE 13: CREATE NEW APPLICATION

5. Click **View Details** to review specific process details.

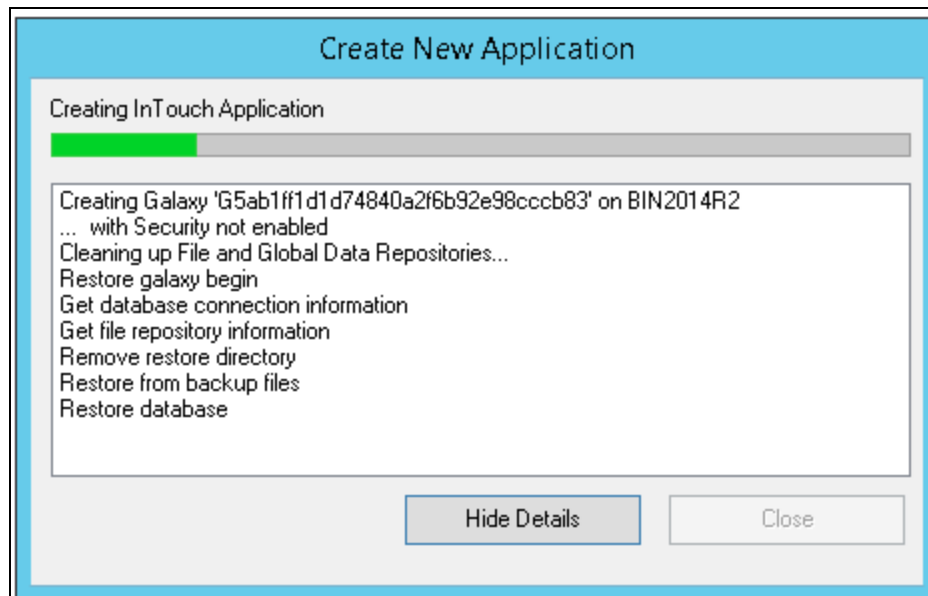


FIGURE 14: VIEW DETAILS

6. After the application is created, click **Close**.

The Stand-Alone InTouch Application is converted to a Modern InTouch Application.

B. Shah

Tech Notes are published occasionally by Wonderware Technical Support. Publisher: Invensys Systems, Inc., 26561 Rancho Parkway South, Lake Forest, CA 92630. There is also technical information on our software products at [Wonderware Technical Support](#).

For technical support questions, send an e-mail to wwsupport@invensys.com.

 [Back to top](#)

©2014 Invensys Systems, Inc. All rights reserved. No part of the material protected by this copyright may be reproduced or utilized in any form or by any means, electronic or mechanical, including photocopying, recording, broadcasting, or by any information storage and retrieval system, without permission in writing from Invensys Systems, Inc.

[Terms of Use.](#)