

Tech Note 517

Getting Started with InTouch® Compact Panels

All Tech Notes and KBCD documents and software are provided "as is" without warranty of any kind. See the [Terms of Use](#) for more information.

Topic#: 002251
Created: February 2008

Introduction

This *Tech Note* includes a Flash demo that guides you through the process of creating an application for InTouch Compact Panels. However, to be able to implement the steps described in the demo, you must successfully complete the following tasks.

Application Versions

- InTouch 10
- Wonderware Application Server 3.0

You must have a Wonderware Development Studio 10.0 license file to enable the IDE.

On the Compact Panel

Connect the Compact Panel to the network.

- Start the Compact Panel. The following screen appears (Figure 1 below). Note the **Local IP** address of the Compact Panel for later use.

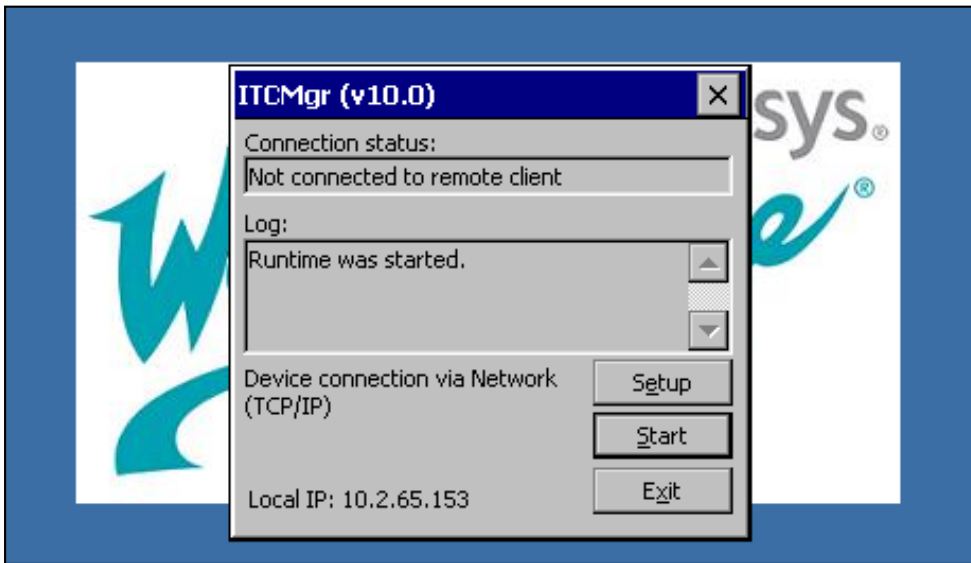


Figure 1: Initial InTouch Panel Startup

If the Compact Panel cannot connect to the network, you must connect to the IDE node using a cross-over cable. In that case, the IP address for the Compact Panel can be manually configured.

To configure the IP address manually

1. From the **Start** button, click **Settings/Network and Dial-Up Connections**.

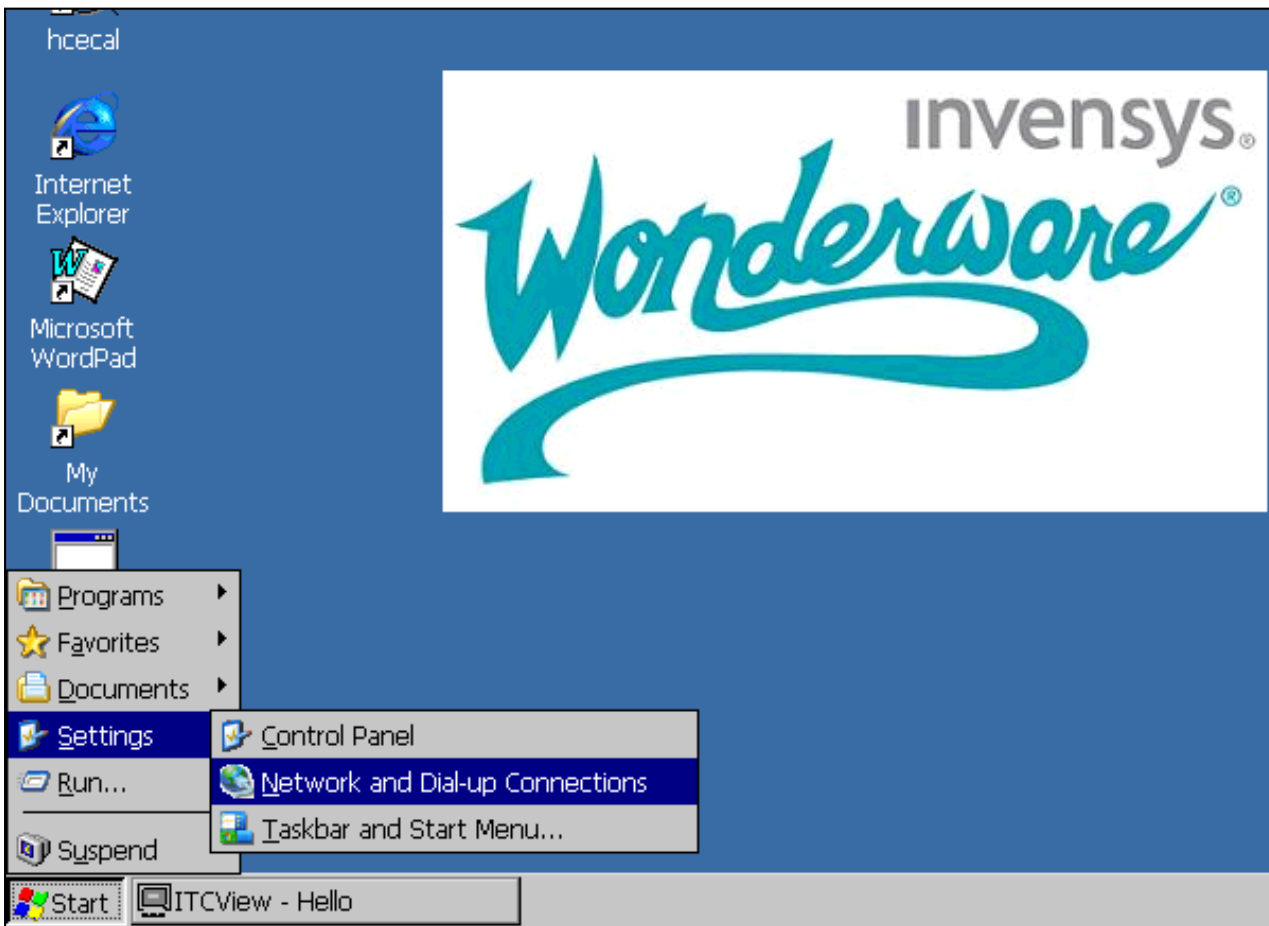


Figure 2: Configure Network and Dial-up Connections

2. Type the IP address you noted when you first started the Compact Panel.

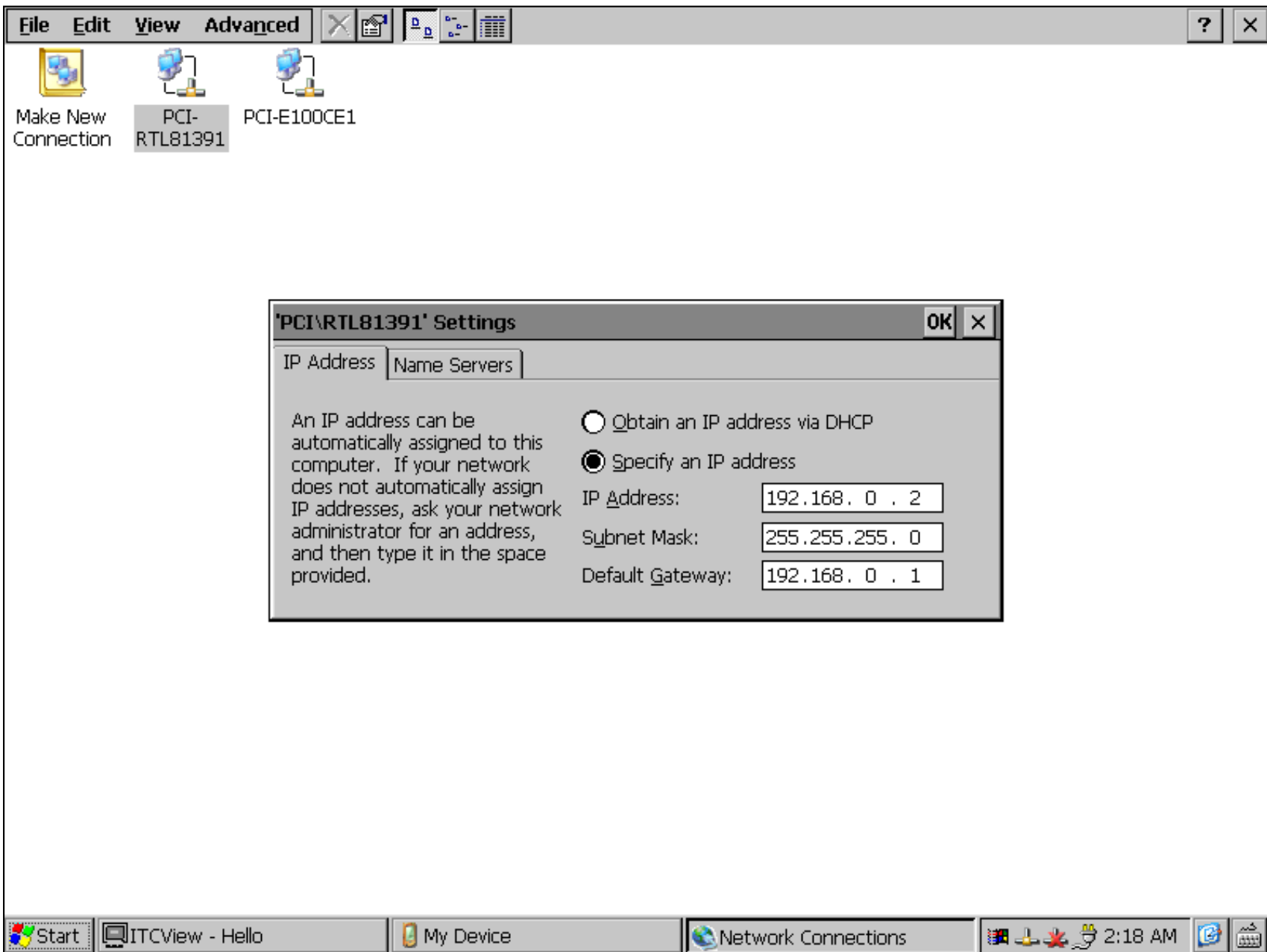


Figure 3: Specify an IP Address

3. Click **OK** and close the Network Connections window.

On the IDE

Import the InTouch demo file to the IDE. To do that, you need a computer with InTouch 10 and IAS 3.0 installed on it.

1. Install **Extensions for InTouch Compact Edition** and create a test Galaxy.
2. Go to **Galaxy/Import/Objects**, then browse to **C:\Program Files\Archestra\Framework\Bin**.
3. Import **InTouchCompactApp.aaPKG**.

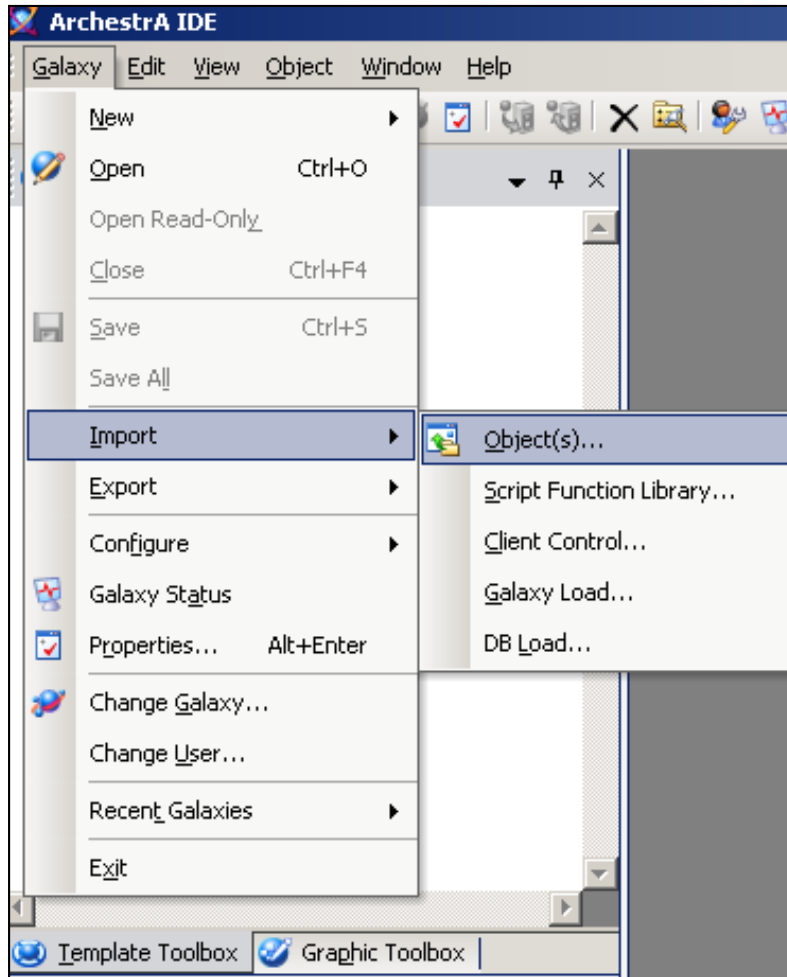
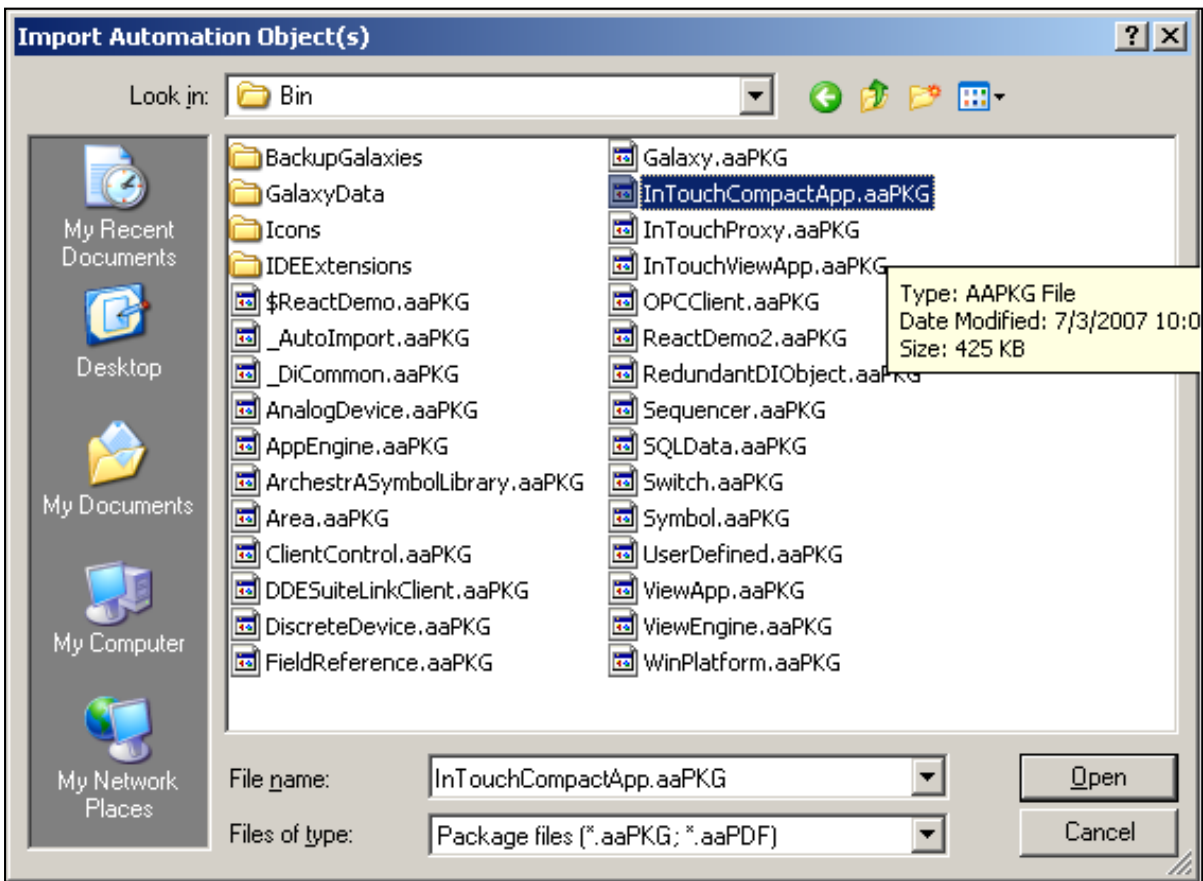


Figure 4: Import/Objects



You are now ready to follow the steps described in the Flash movie. Later in the Flash movie you will be prompted to import the InTouch application.

4. Download and extract the files from the [InTouch demo app Zip file](#).

To View the Flash Movie

1. Double-click the [IDEDownloadFlash_T7_demo\T7_Demo.htm](#) file to begin the movie.
2. Pause, start, stop or rewind the movie using control buttons at the bottom of the movie interface.

N. Khadikar

Tech Notes are published occasionally by Wonderware Technical Support. Publisher: Invensys Systems, Inc., 26561 Rancho Parkway South, Lake Forest, CA 92630. There is also technical information on our software products at www.wonderware.com/support/mmi

For technical support questions, send an e-mail to support@wonderware.com.



[Back to top](#)

©2008 Invensys Systems, Inc. All rights reserved. No part of the material protected by this copyright may be reproduced or utilized in any form or by any means, electronic or mechanical, including photocopying, recording, broadcasting, or by any information storage and retrieval system, without permission in writing from Invensys Systems, Inc. [Terms of Use](#).