

[Tech Note 783](#)

Installing Web Service (IIS) Role and Role Services Prerequisites for MES 4.0

All Tech Notes, Tech Alerts and KBCD documents and software are provided "as is" without warranty of any kind. See the [Terms of Use](#) for more information.

Topic#: 002564
Created: July 2011

Introduction

This *Tech Note* lists Role and Role Services prerequisites necessary to install MES 4.0 and 4.0 SP1 on Windows 2008 Server and 2008 Server R2.

Note: This *Tech Note* applies ONLY to the Manager Reporting component of MES 4.0.

Application Versions

- Windows Server 2008 and Server 2008 R2
- MES 4.0 and later

Problem

The **Web Server (IIS)** Role is not installed by default on Windows Server 2008. If the Web Server (IIS) Role is not installed with the correct Role and Role Services, the MES installation ends prematurely when installing the Manager component.

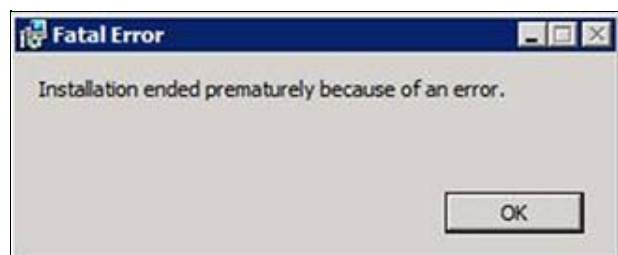


FIGURE 1: MES INSTALLATION FATAL ERROR MESSAGE

Solution

To install Web Server (IIS) and configure the correct Role Services

1. Open Control Panel.
2. Click **Programs and Features**, then click **Turn Windows features on or off**.
3. In the **Roles Summary** panel, click **Add Roles** (Figure 2 below).

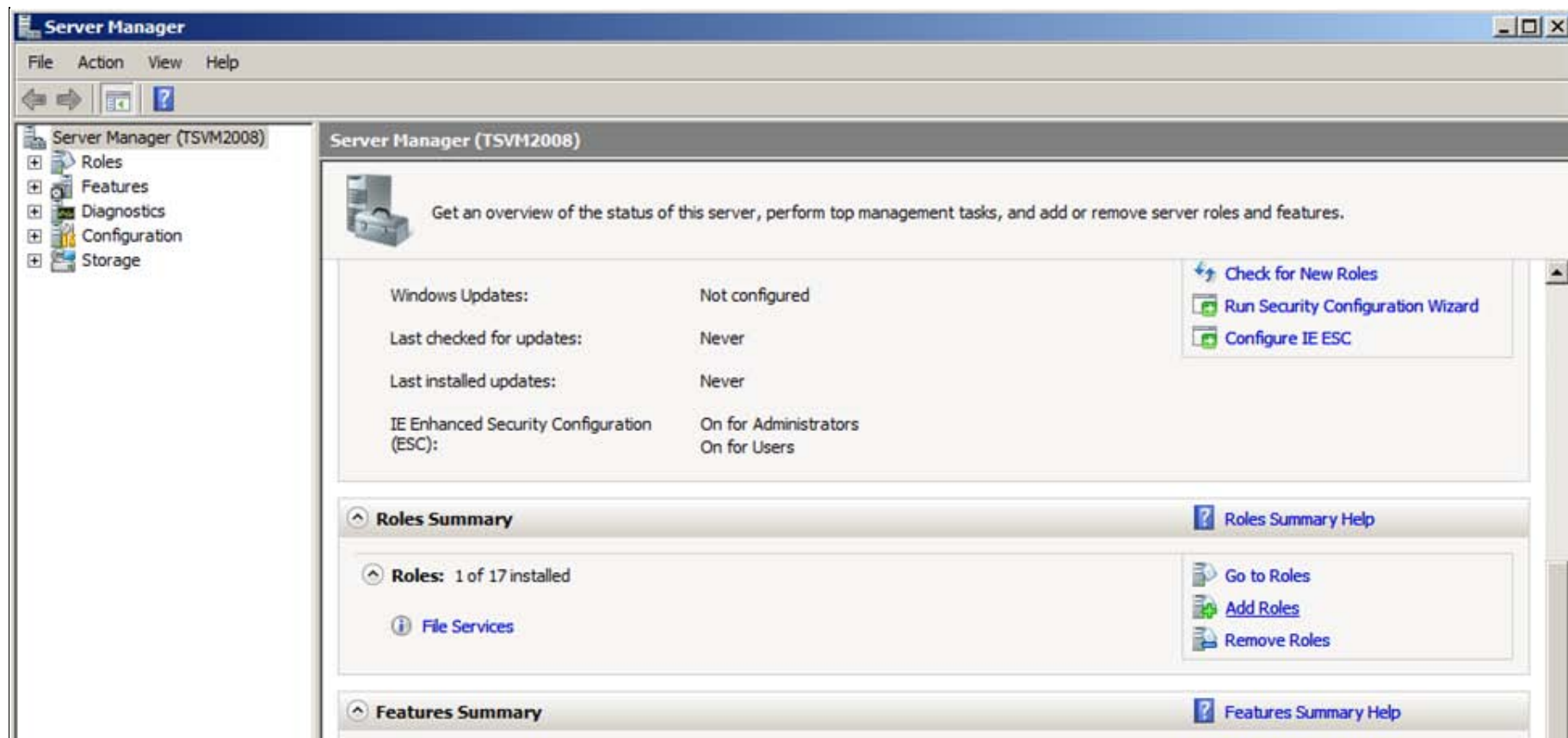


FIGURE 2: ADD ROLES

The **Select Server Roles** window appears (Figure 3 below).

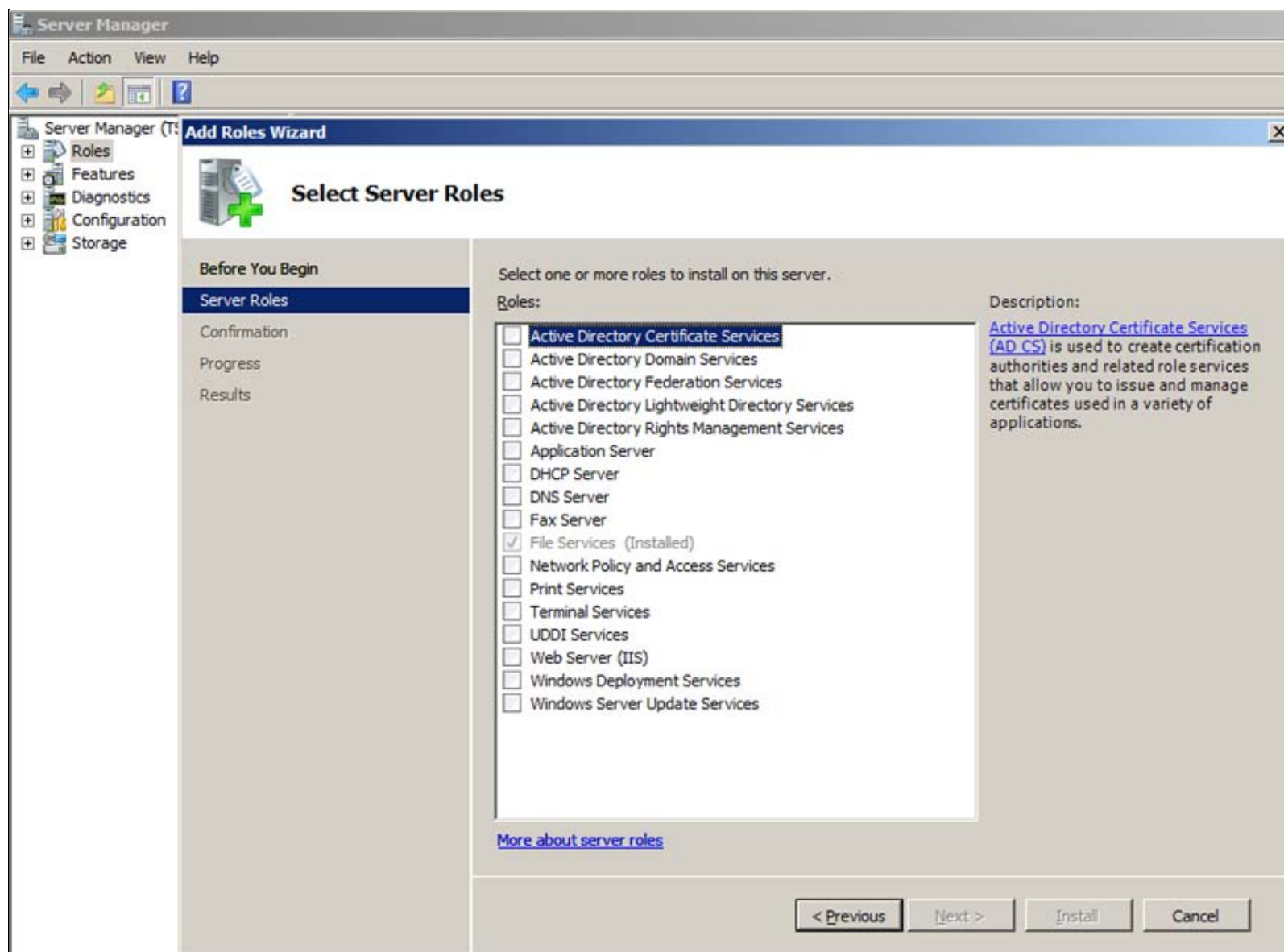


FIGURE 3: SELECT SERVER ROLES

- Click **Web Server (IIS)** then click **Next**.

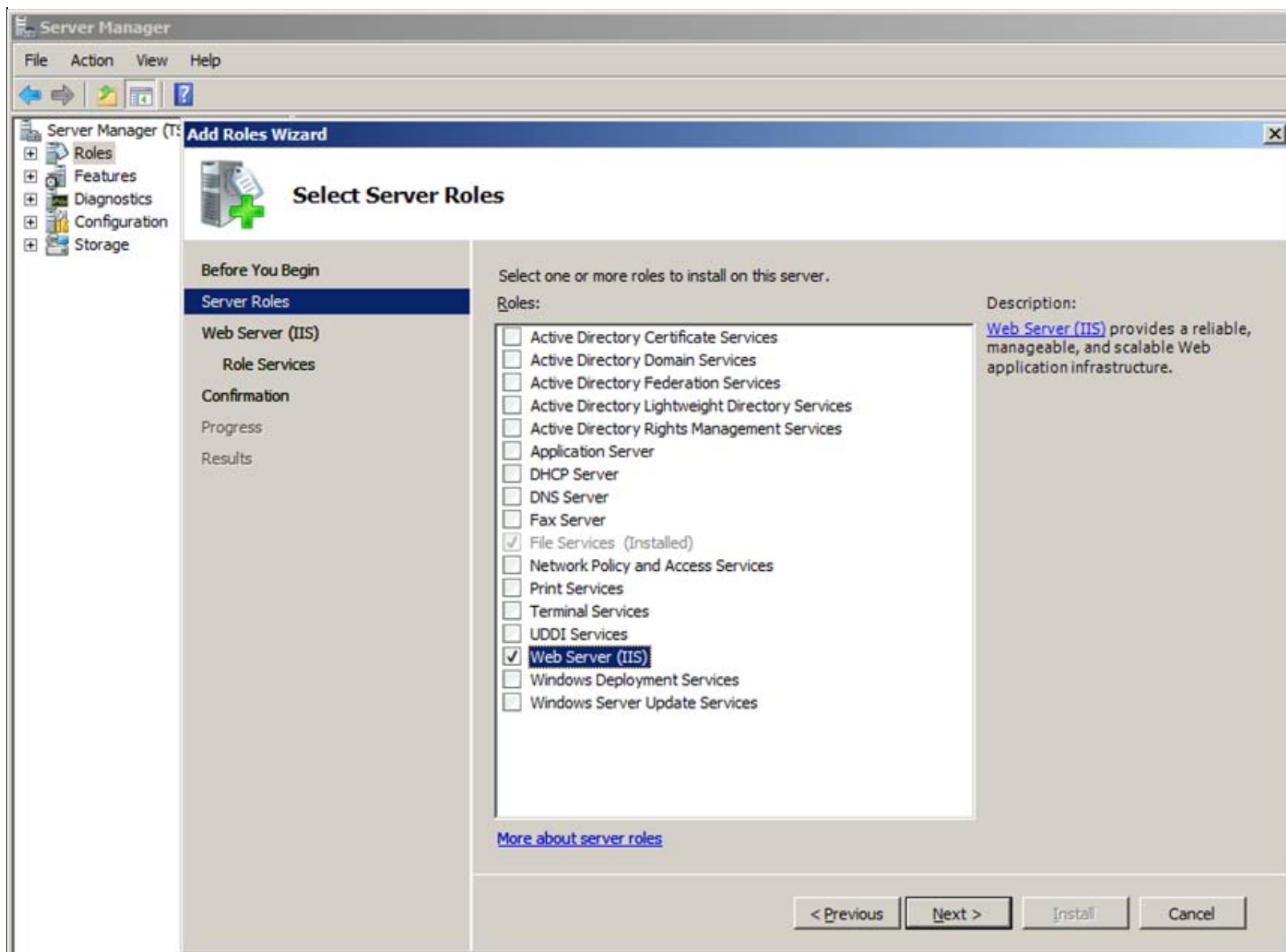


FIGURE 4: WEB SERVER (IIS) SERVER ROLE INSTALL

5. Install the following **Role Services** from the Select Role Services list (following table, and Figure 5 below). Some Role Services will automatically ask and check for the other necessary default Roles.

| Role | Role Service |
|----------------------|--------------------|
| Common HTTP Features | Static Content |
| | Default Document |
| | Directory Browsing |

HTTP Errors

Application Development

ASP.NET

.NET Extensibility

ASP

ISAPI Extensions

ISAPI Filters

Health and Diagnostics

HTTP Logging

Request Monitor

Security

Request Filtering

Performance

Static Content Compression

Management Tools

IIS Management Console

IIS 6 Management Compatibility

IIS 6 Metabase Compatibility

FTP Publishing Service

FTP Server

FTP Management Console

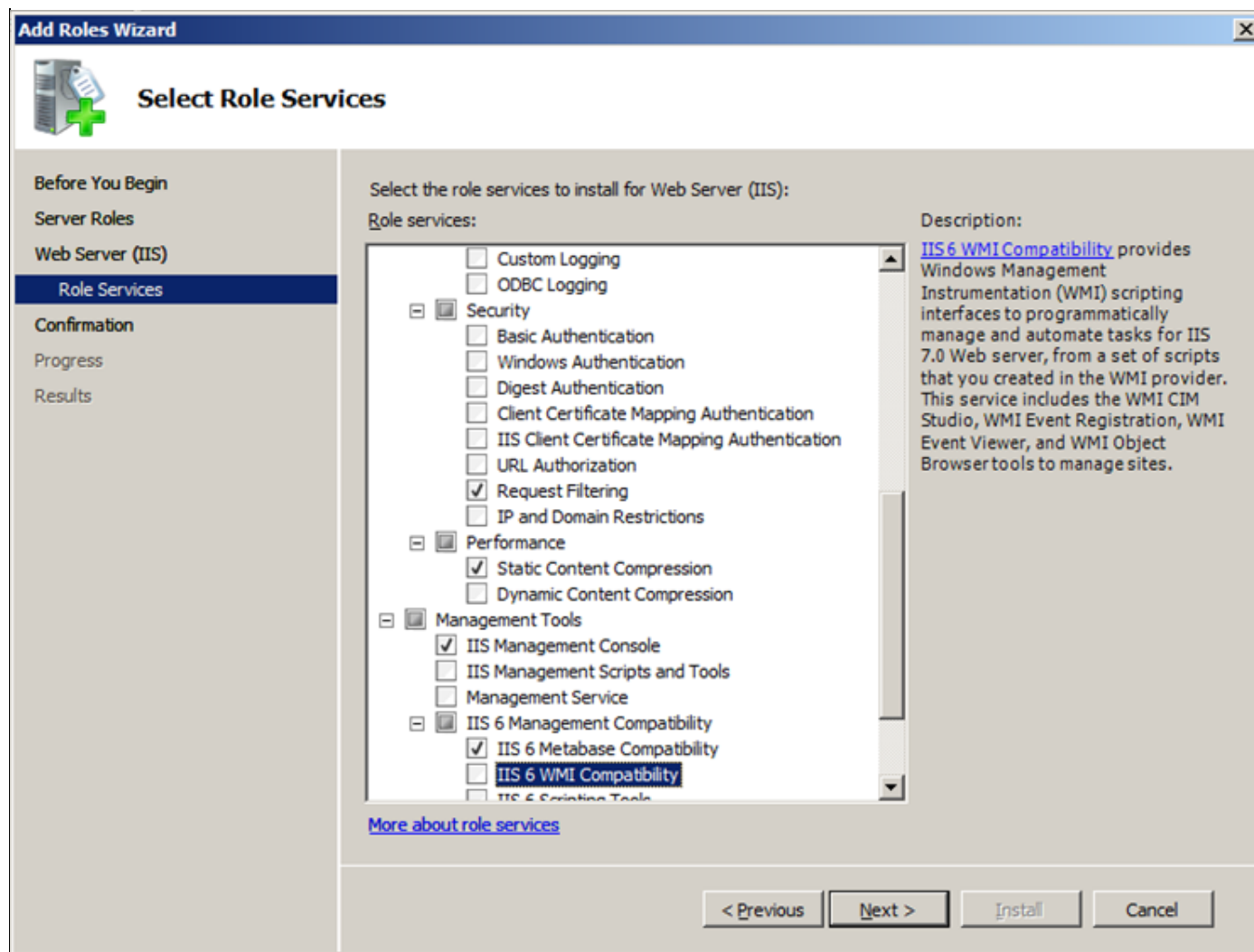


FIGURE 5: ROLE SERVICES LIST

Figures 6 and 7 (below) show the correct Role Services installed.

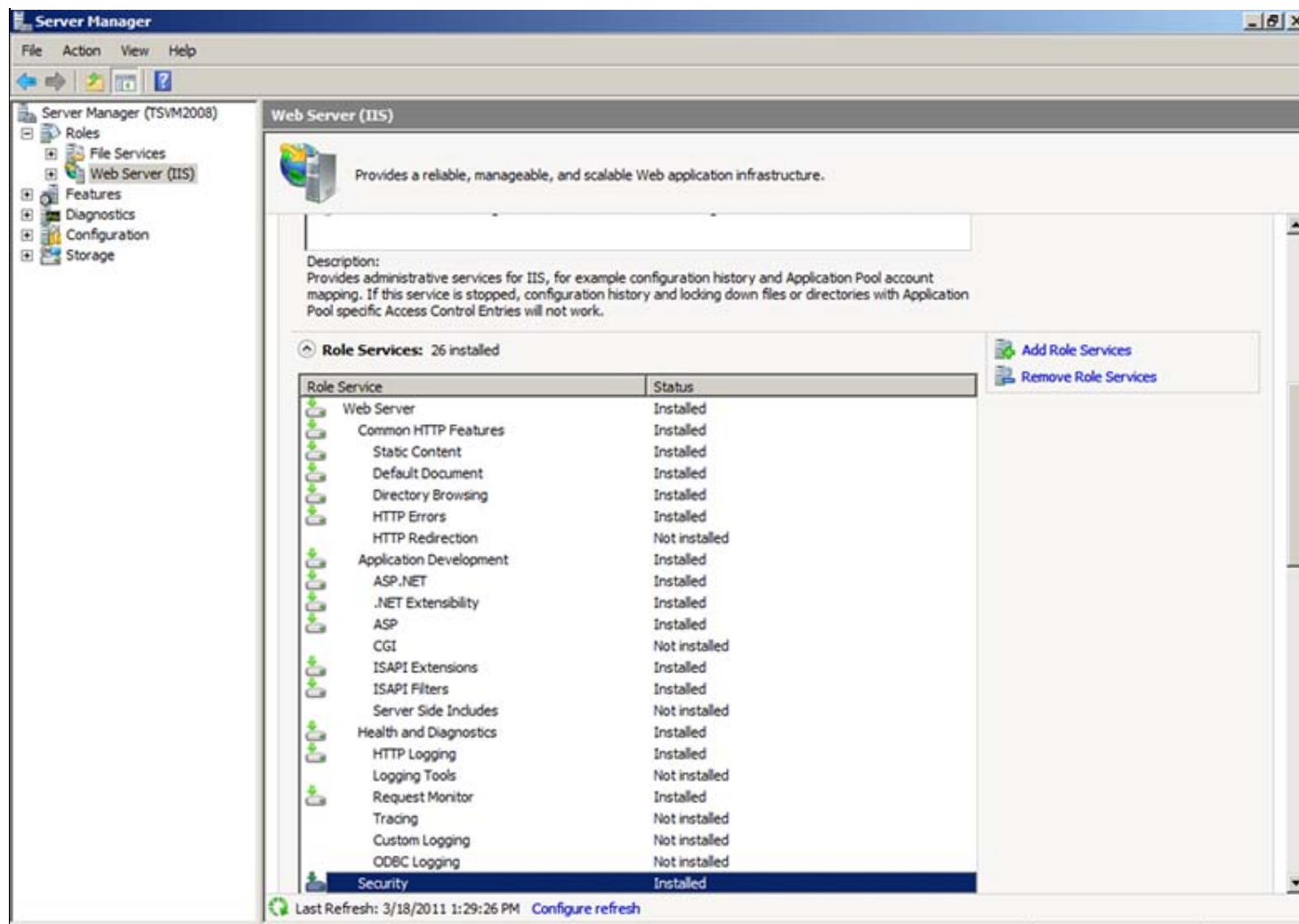


FIGURE 6: WEB SERVER (IIS) ROLE SERVICES INSTALLED

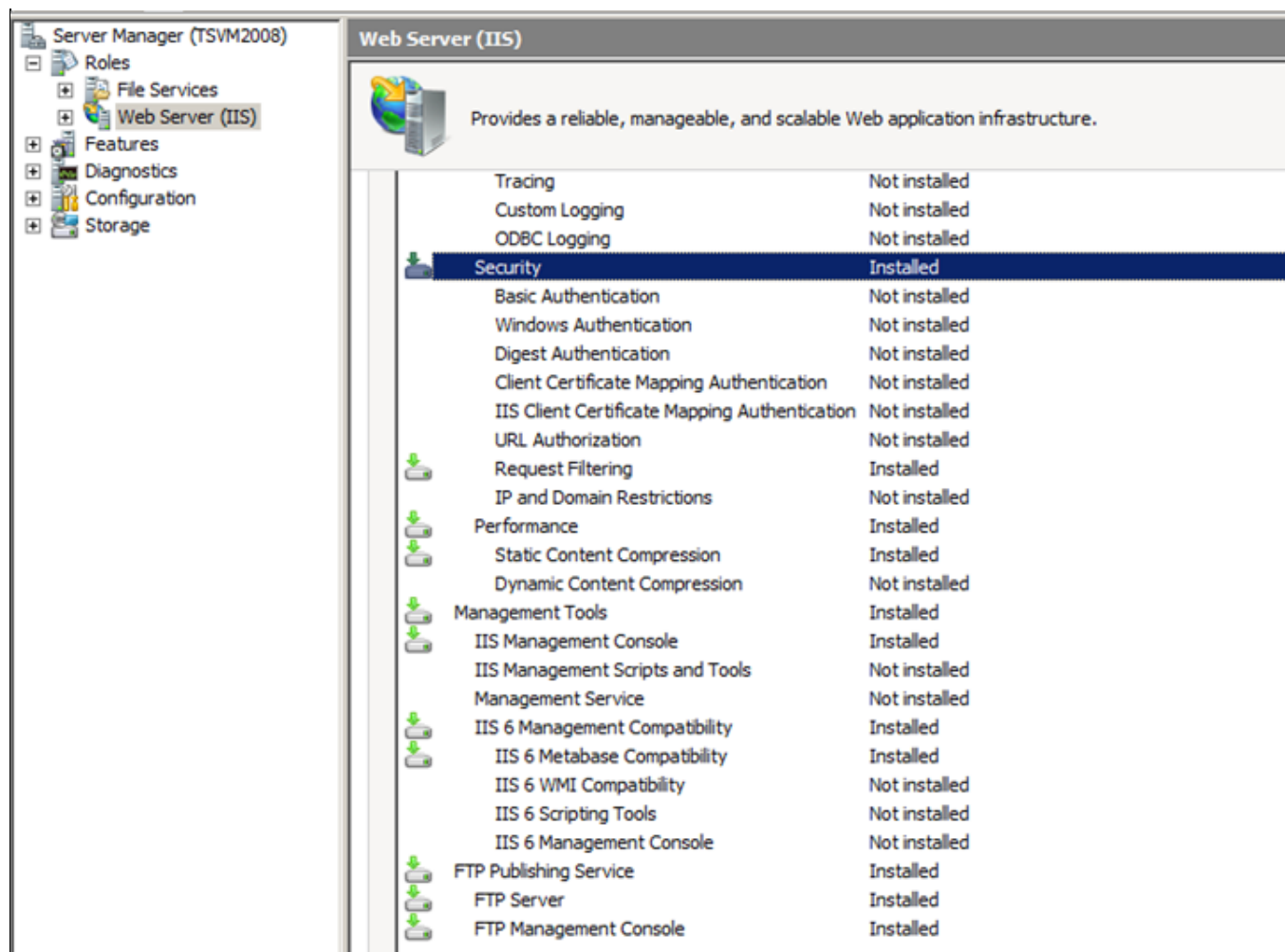


FIGURE 6: WEB SERVER (IIS) ROLE SERVICES INSTALLED

J. Godfrey

Tech Notes are published occasionally by Wonderware Technical Support. Publisher: Invensys Systems, Inc., 26561 Rancho Parkway South, Lake Forest, CA 92630. There is also technical information on our software products at [Wonderware Technical Support](#).

For technical support questions, send an e-mail to wwsupport@invensys.com.

 [Back to top](#)

©2011 Invensys Systems, Inc. All rights reserved. No part of the material protected by this copyright may be reproduced or utilized in any form or by any means, electronic or mechanical, including photocopying, recording, broadcasting, or by any information storage and retrieval system, without permission in writing from Invensys Systems, Inc. [Terms of Use](#).