

## Tech Note 863

# Finding DI DAS Object Versions From the SMC

All Tech Notes, Tech Alerts and KBCD documents and software are provided "as is" without warranty of any kind. See the [Terms of Use](#) for more information.

Topic#: 002661  
Created: May 2012

## Introduction

Finding the version for a DI DAServer objects (**DIObjects**) from the hosting node can be difficult. This *Tech Note* will help you find the version of the deployed DIObject from the hosting nodes **System Management Console (SMC)**.

**Reminder:** Having a mix standalone DAServers and DIObjects on the same node is supported as long as they are not the same type of server. For example, you can install standalone DASMBTCP and deploy ABCIP DIObjects on the same node. However, you cannot install DASABCIP and deploy ABCIP DIObjects to the same node. If you do so, errors will occur and the server will not be functional. See [Tech Note 709](#) for full details.

## Application Versions

- Application Server 2.0 p01 and later
- DAServers: All versions (see following table)

## Locating Version From the SMC

1. Open the SMC from the Start Menu (**Start/Programs/Wonderware/System Management Console**)
2. Expand the **DAServer Manger**

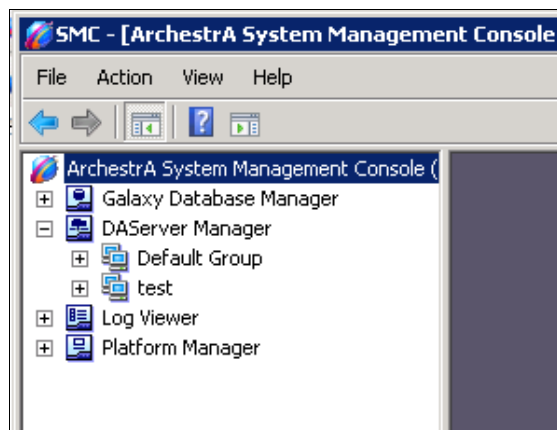
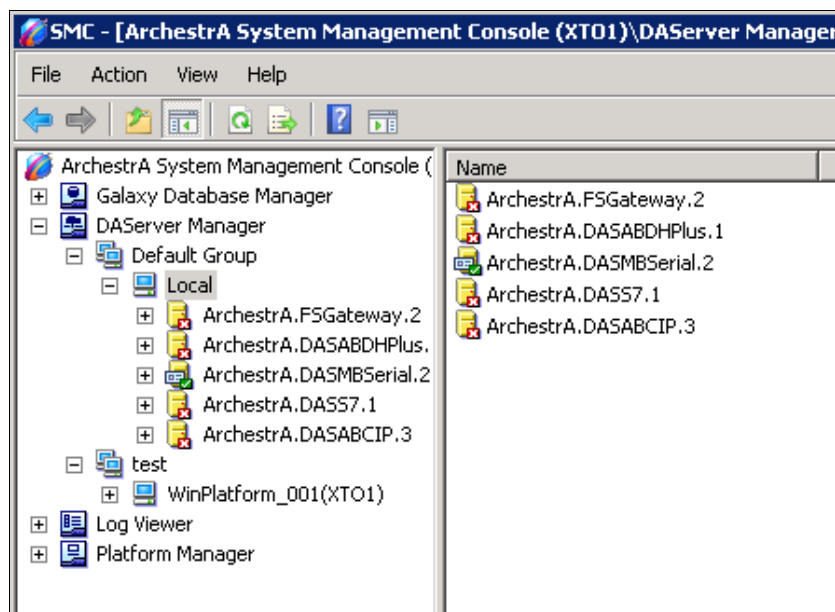


Figure 1: DAServer Manager

**Note:** Figure 1 shows 2 groups listed under DAServer Manager. The **Default Group** lists what is local to this node. **Test** is the name of the Galaxy

being used to setup this *Tech Note*. It is possible to check versions of other platforms in your Galaxy. For the purpose of this *Tech Note* we look at the local node.

4. Expand **Default Group**.
5. Expand **Local**.



**Figure 2: List of Local DAServers**

6. On the left panel, select the DAServer you wish to check.
7. On the right panel, locate the **Version** column, make note on the number and find it in the table list in **Figure 4**.

Component	Version	Build Date
DASMBSerial	0198.0126.0017.0007	May 31, 2006
DASMBSerial [Shell]	0689.0039.0021.0001	April 28, 2005
Original DAS Toolkit	0689.0000.0063.0000	April 25, 2006
DASEngine	0875.0466.0000.0000	May 5, 2011
PlugInOPC	0875.0222.0000.0000	May 5, 2011
PlugInDDESL	0875.0222.0000.0000	May 5, 2011

**Figure 3: List of Component, Version, and Build Date**

**Note:** If you look up 0198.0126.0017.007 in the table below (**Figure 4**), you find that this is the DASMBSerial **version 2.0 p01**.

## Look Up Table

### DI Object Versions Table

Component	Version	Build Date	Product Version
DASABCIP	0452.0365.0007.0003	January 19, 2007	3.5 p01
DASABCIP	0452.0365.0031.0012	June 15, 2007	3.5 p02
DASABCIP	0475.0373.0000.0000	September 11, 2007	3.5 SP1
DASABCIP	0568.0462.0000.0000	February 22, 2008	4.0
DASABCIP	0657.0522.0000.0000	January 30, 2010	4.1
DASABCIP	0679.0527.0000.0000	May 22, 2010	4.1 SP1
DASABCIP	0715.0554.0000.0000	June 9, 2011	4.1 SP2
DASABDHPlus	075.0048.0029.0007	November 7, 2003	1.0 SP1 p01
DASABDHPlus	0122.0067.0000.0000	April 3, 2007	1.5
DASABDHPlus	0131.0069.0000.0000	September 11, 2007	1.5 SP1
DASABTCP	0100.0102.0062.0018	October 20, 2004	1.1 SP2
DASABTCP	0143.0122.0000.0000	April 11, 2007	1.5
DASABTCP	0154.0126.0000.0000	September 11, 2007	1.5 SP1
DASABTCP	0186.0124.0000.0000	May 31, 2010	2.0

DASMBTCP	<b>0187.0151.0000.0000</b>	September 13, 2004	1.1
DASMBTCP	<b>0239.0183.0000.0000</b>	April 3, 2007	1.5
DASMBTCP	<b>0246.0186.0000.0000</b>	September 11, 2007	1.5 SP1
DASMBTCP	<b>0279.0201.0000.0000</b>	May 26, 2010	2.0
DASMBSerial	<b>0198.0126.0000.0000</b>	March 29, 2005	2.0
DASMBSerial	<b>0198.0126.0017.0007</b>	May 31, 2006	2.0 p01
DASMBSerial	<b>0239.0136.0000.0000</b>	January 19, 2007	2.5
DASMBSerial	<b>0249.0138.0000.0000</b>	September 13, 2007	2.5 SP1
DASMBSerial	<b>0252.0139.0000.0000</b>	December 14, 2007	2.5 SP2
DASSIDirect	<b>0228.0191.0000.0000</b>	February 1, 2007	1.5
DASSIDirect	<b>0244.0197.0000.0000</b>	September 11, 2007	1.5 SP1
DASSIDirect	<b>0277.0219.0000.0000</b>	May 26, 2010	2.0
DASSIDirect	<b>0346.0272.0000.0000</b>	January 24, 2012	3.0
DASS7	<b>0333.0179.0042.0019</b>	August 3, 2005	1.1 SP1 p01
DASS7	<b>0381.0203.0000.0000</b>	April 6, 2007	1.5
DASS7	<b>0391.0206.0000.0000</b>	September 11, 2007	1.5 SP1
DASS7	<b>0414.0223.0000.0000</b>	May 20, 2010	2

**Note:** If the version you are looking up is not in the list it may be a hotfix release. Contact [Wonderware Tech Support](#) for further assistance.

K. Lovejoy

*Tech Notes* are published occasionally by Wonderware Technical Support. Publisher: Invensys Systems, Inc., 26561 Rancho Parkway South, Lake Forest, CA 92630. There is also technical information on our software products at [Wonderware Technical Support](#).

For technical support questions, send an e-mail to [wwsupport@invensys.com](mailto:wwsupport@invensys.com).

 [Back to top](#)

©2012 Invensys Systems, Inc. All rights reserved. No part of the material protected by this copyright may be reproduced or utilized in any form or by any means, electronic or mechanical, including photocopying, recording, broadcasting, or by any information storage and retrieval system, without permission in writing from Invensys Systems, Inc. [Terms of Use](#).