

[Tech Note 969](#)

Port Configuration List for System Platform 2012 R2 Multi-Galaxy Environment

All Tech Notes, Tech Alerts and KBCD documents and software are provided "as is" without warranty of any kind. See the [Terms of Use](#) for more information.

Topic#: 002792

Created: July 2013

Introduction

This *Tech Note* lists all ports that are used by Wonderware System Platform. The ports allow communications and interactions between the different nodes and components.

Application Versions

- Wonderware System Platform 2012 R2

Before Installing System Platform 2012 R2

Review the content of [Tech Article: Security Settings for Wonderware® Products](#) and [Securing Application Server Systems](#) article available on WDN.

Note: The Port for Historian Server used for Replication purposes in **v10.0** and for the **new Storage** engine (formerly "MDAS") in v11.0 is the same for both features. It is defined in the **System Parameters** section of Historian in the "ReplicationTcpPort" parameter. The default value is **32568** but it can be changed if desired (Figures 1 and 2 below).

The screenshot shows the ArchestrA System Management Console interface. On the left is a tree view of the system configuration. The main area displays a list of parameters with their names and values. A dialog box titled 'ReplicationTcpPort Properties' is open, showing details for the 'ReplicationTcpPort' parameter.

Parameter Name	Parameter Value
DataImportPath	C:\Historian\Data\DataImport
DataIndexLogPath	C:\Historian\Data\Logs\DataIndex
DataIndexPath	C:\Historian\Data\DataIndex
EventStorageDuration	168
HeadroomAnalog2	100
HeadroomAnalog4	100
HeadroomAnalog8	0
HeadroomDiscrete	100
HeadroomString	20
HistorianPartner	
HistorianVersion	
HistoryCacheSize	
HistoryDaysAlwaysCached	
HoursPerBlock	
InterpolationTypeInteger	
InterpolationTypeReal	
LateDataPathThreshold	
LicenseRemoteIDASCount	
LicenseTagCount	
ManualDataPathThreshold	
ModLogTrackingStatus	
OldDataSynchronizationDelay	
QualityRule	
RealTimeWindow	
ReplicationConcurrentOperations	
ReplicationDefaultPrefix	A405261-WAW2012
ReplicationTcpPort	32568
RevisionLogPath	C:\Historian\Data\Logs\Revision

ReplicationTcpPort Properties

General

Name: ReplicationTcpPort

Parameter Type: Numeric, Editable

Value: 32568

Description: Replication TCP Port Address

Buttons: OK, Cancel, Apply, Help

FIGURE 1: DEFAULT HISTORIAN REPLICATION PORT IN THE SMC

The screenshot shows the 'Template Toolbox' in ArchestrA. It contains a list of templates including ASBPortsTN, Application, Corporate Energy Management, and Base Template. A 'Configurator' window is also visible, showing a menu with 'File' and 'Help' options.

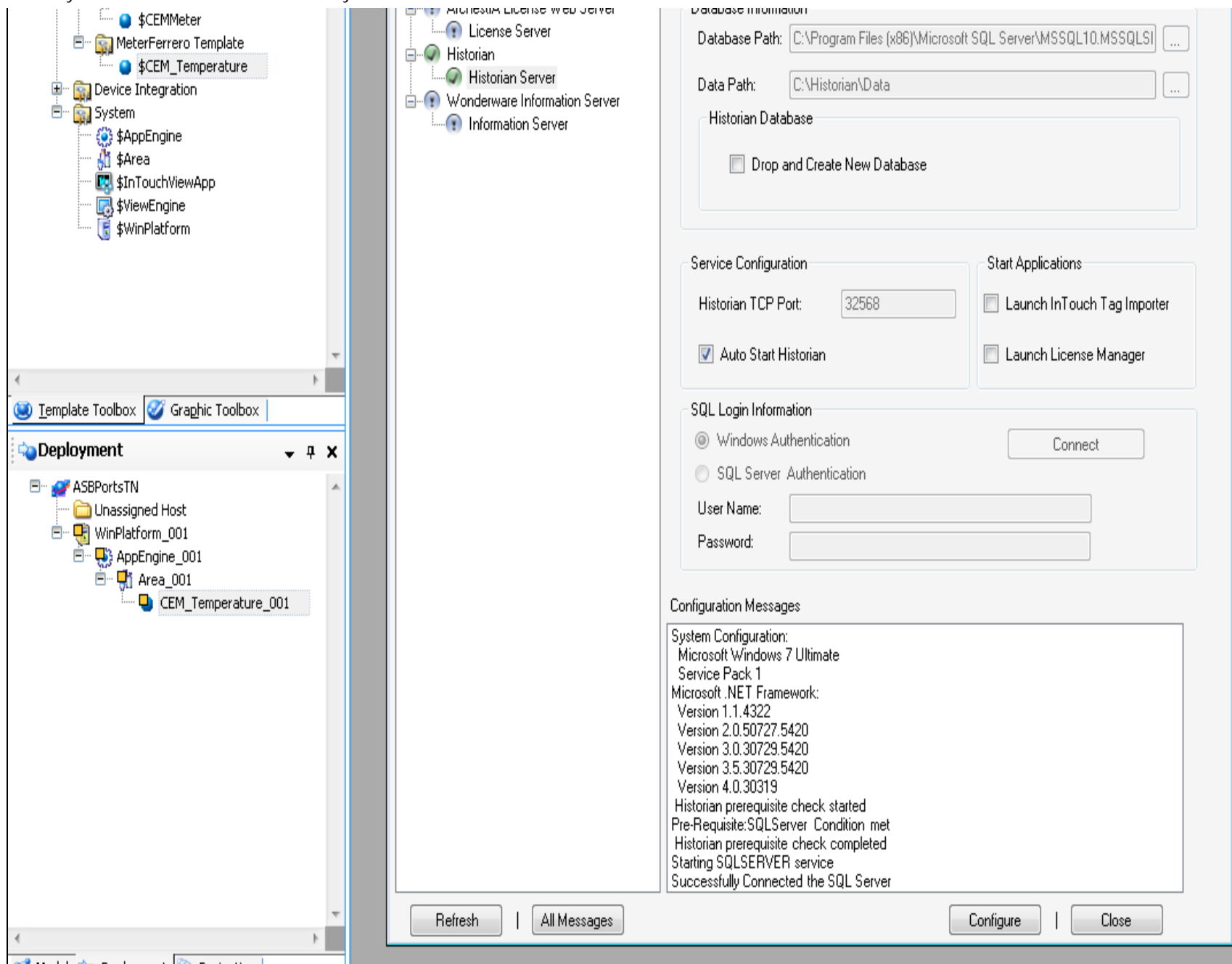


FIGURE 2: HISTORIAN PORT CONFIGURATION FROM THE IDE

The following ports must be opened in a Multi-Galaxy environment. The firewall must allow incoming connections to the ports in the following table for their corresponding services to function.

Note: If you are using a single Galaxy, you do not need to configure these ports.

ArchestrA Service Port Number Comments and Details

ASBGRBrowsing Service	7500 (default, configurable)	The ASBGalaxyBrowsing service connects to the ArchestrA namespace to enable browsing of ArchestrA objects and attributes. This is a core service. Core services are installed on Bootstrap node, the Galaxy Repository node and the IDE node.
ASBMxDataProvider Service	3572 (default, configurable)	The ASB Mx Data Provider Service acts as a gateway providing access to Application Server data.
ASBAuthentication Service	7779 (default, configurable)	The ASB Authentication Service provides user authentication. This service is used to retrieve SAML tokens for Secured/Verified writes.

ArchestrA CORE Services Port Number Comments and Details

Local Discovery Server	9111	The Local Discovery Server provides discovery for a single, local node. All services register with the Local Discovery Server, and all clients query it. It is not user configurable.
Primary Local Galaxy Server	9110	The scope of the Local Galaxy Server encompasses the services in an entire galaxy. It is preconfigured as the loopback IP address 127.0.0.1. You can designate primary and secondary servers running on different nodes for redundancy. Note: You must reconfigure the Local Galaxy Server and replace the loopback address with the Galaxy Repository node name before pairing galaxies. At least one Local Galaxy Server must be configured and online for multi-galaxy communication to function.
Secondary Local Galaxy Server	9210	This port should be opened in the secondary local Galaxy Server in the redundancy environment.
Primary Cross Galaxy Server	9310	Cross Galaxy Server encompasses the services available across multiple galaxies. This acts as a primary in redundancy environment. In any multi-galaxy environment, there can be only one designated primary and one designated secondary Cross Galaxy Server. Note: The Cross Galaxy Server can reside on any node in the multi-galaxy environment, but all galaxies in the environment must configure the Cross Galaxy Server to run on the same node.
Secondary Cross Galaxy Server	9410	This port should be opened in the secondary cross Galaxy Server in the Redundancy environment.

Port Configuration List for System Platform 2012 R2 Multi-Galaxy Environment

Galaxy Pairing	7085	This port required to be opened to enable galaxy pairing.
Configuration Service	6332	<ol style="list-style-type: none">Configuration service runs only in the service repository node. Service Repository is a SQL DB. SQL db gets created post-installation after user installs ASP product.this service is required for Configuring user services.
Content Provider Service	6011	<ol style="list-style-type: none">Content Provider Service searches for the requested package file in repository node and reads the package information and transfers the package information to the requester.This is a core service. Core services will be installed on Bootstrap node, Galaxy Repository node and IDE node.This service is required for Configuring user services.
Deploy Agent Service	6533, 6633	<ol style="list-style-type: none">Deploys service requests for the package information to Content Provider Service. On this request Content Provider Service sends the package information to the Deploy Agent Service.This is a core service. Core services will be installed on Bootstrap node, Galaxy Repository node and IDE node.This service is used while deploying user services. At present while deploying a platform. If user creates any custom user service, deploy agent service is required to deploy the custom user service
Service Manager Service	6111, 6113	<ol style="list-style-type: none">The Service Manager provides discovery services to clients, and launches Service Hosts to host Archestra services as required.This is a core service. Core services will be installed on Bootstrap node, Galaxy Repository node and IDE node.This service manages all the User services. Start, stop, regularly ping if the service is running or not if not running starts it again.
System Authentication Service	9876	System Authentication Service runs only in the service repository node.

R. Mahmoud; L. Santinello

Tech Notes are published occasionally by Wonderware Technical Support. Publisher: Invensys Systems, Inc., 26561 Rancho Parkway South, Lake Forest, CA 92630. There is also technical information on our software products at [Wonderware Technical Support](#).

For technical support questions, send an e-mail to wwsupport@invensys.com.

 [Back to top](#)

©2013 Invensys Systems, Inc. All rights reserved. No part of the material protected by this copyright may be reproduced or utilized in any form or by any means, electronic or mechanical, including photocopying, recording, broadcasting, or by any information storage and retrieval system, without permission in writing from Invensys Systems, Inc.

[Terms of Use](#).