

## [Tech Note 990](#)

# Ensuring a Successful InBatch Upgrade

---

All Tech Notes, Tech Alerts and KBCD documents and software are provided "as is" without warranty of any kind. See the [Terms of Use](#) for more information.

Topic#: 002818

Created: October 2013

## Introduction

There is an issue upgrading the InBatch **Config\_A** file to the current version. The issue occurs when the **cvtmaster** conversion utility is run multiple times.

## Application Versions

This *Tech Note* applies to the following InBatch versions:

- IB 9.0
- IB 90 SP1 and SP2
- IB 9.5
- IB 2012 (IB 9.6)
- IB 2012R2 (10.0)

## Issue

When you are upgrading your InBatch application to a newer version, you might need to run the conversion utility more than once. However, the current InBatch product will only let you run the conversion 1 time from the folder location and same folder.

This *Tech Note* shows you how to get around this problem so you can upgrade to your most current configuration.

## Solution

1. When you first run the cvtmaster to upgrade and use the default setting (Figure 1 below) everything is upgraded correctly.

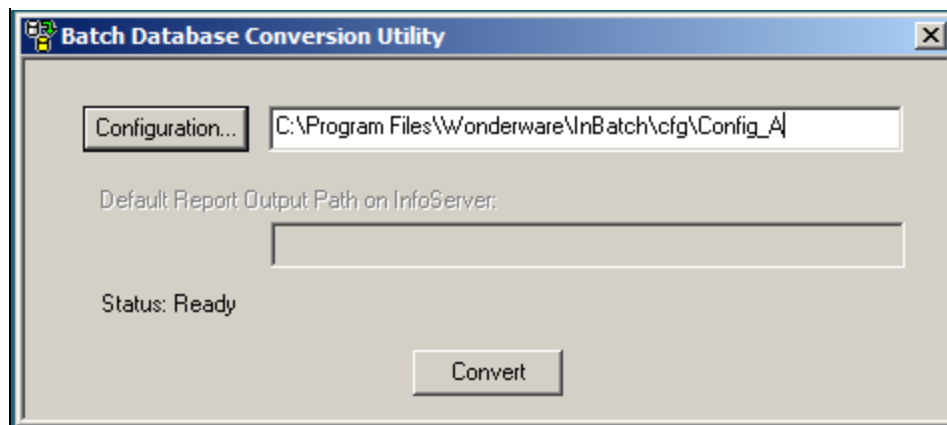


FIGURE 1: DEFAULT BATCH CONVERSION SETTING

- To verify the conversion worked correctly you need to go the **Config\_A** folder that you converted and review the **DBCvt.txt** log file that was created by the migration operation. This file reports any issues with conversion.

Windows Mail	CfgTIMDB.key	5/21/12 1:03 AM	KEY File	2 KB
Windows NT	DBCvt.txt	10/28/13 10:29 AM	Text Document	3 KB
Wonderware	EnvDB.dat	4/14/13 1:22 PM	DAT File	51 KB
ArchestrA	EnvDB.dbd	5/21/12 1:03 AM	DBD File	1 KB
DAServer	EnvDB.key	5/21/12 1:03 AM	KEY File	2 KB
Historian	LinkDB.dat	4/14/13 12:49 PM	DAT File	686 KB
HistorianClient	LinkDB.dbd	4/14/13 12:49 PM	DBD File	2 KB
InBatch	LinkDB.key	4/14/13 12:49 PM	KEY File	106 KB
BatchHistoryServer	LoggerDB.dat	5/21/12 1:03 AM	DAT File	1 KB
Bin	LoggerDB.dbd	5/21/12 1:03 AM	DBD File	1 KB
cfg	LoggerDB.key	5/21/12 1:03 AM	KEY File	2 KB
Config_A	MaterialDB.dat	7/25/13 10:51 AM	DAT File	1,177 KB
Config_A corrupt recipe	MaterialDB.dbd	5/21/12 1:03 AM	DBD File	1 KB
	MaterialDB.key	7/25/13 10:51 AM	KEY File	374 KB

FIGURE 2: DBCVT.TXT

Here is the log file contents where the conversion was run and was successful:

```
131024.153705 EnvDBCvt100 DBCvt.c 168 ( 0)
***** 8.1-->10.0 CONVERSION INITIATED *****
131024.153705 EnvDBCvt100 DBCvt.c 182 ( 0)
8.1 path: (.\OldDB95\), 10.0 path: (.)
131024.153705 EnvDBCvt100 EnvDBCvt100.c 56 ( 0)
***** Running EnvDBCvt100 *****
131024.153705 EnvDBCvt100 EnvDBCvt100.c 119 ( 0)
Entered EnvConvert
131024.153705 EnvDBCvt100 EnvDBCvt100.c 128 ( 0)
completed IBMX assignment to Applications struct
```

## Ensuring a Successful InBatch Upgrade

```
131024.153705 EnvDBCvt100 EnvDBCvt100.c 138 ( 0)
IBM already found skipping Migration
131024.153705 EnvDBCvt100 EnvDBCvt100.c 252 ( 0)
Entered AddRecipeCompare
131024.153705 EnvDBCvt100 EnvDBCvt100.c 262 ( 0)
completed RecipeCompare assignement to Applications struct
131024.153705 EnvDBCvt100 EnvDBCvt100.c 278 ( 0)
Sucessfully added RecipeCompare application to Applications table
131024.153705 EnvDBCvt100 EnvDBCvt100.c 210 ( 0)
Entered AddRecipeCompareRuntimeOption
131024.153705 EnvDBCvt100 EnvDBCvt100.c 218 ( 0)
completed RecipeCompare assignement to Runtime struct
131024.153705 EnvDBCvt100 EnvDBCvt100.c 236 ( 0)
Sucessfully added RecipeCompare application to Runtime table
131024.153705 EnvDBCvt100 EnvDBCvt100.c 281 ( 0)
Sucessfully migrated
131024.153705 EnvDBCvt100 EnvDBCvt100.c 299 ( 0)
Migrating BatchManager options
131024.153705 EnvDBCvt100 EnvDBCvt100.c 333 ( 0)
Adding Disconnect Clients parameter
131024.153705 EnvDBCvt100 EnvDBCvt100.c 337 ( 0)
Added Disconnect Clients parameter sucessfully
131024.153705 EnvDBCvt100 EnvDBCvt100.c 333 ( 0)
Adding Batch Stats parameter
131024.153705 EnvDBCvt100 EnvDBCvt100.c 337 ( 0)
Added Batch Stats parameter sucessfully
131024.153705 EnvDBCvt100 EnvDBCvt100.c 344 ( 0)
Assigning Disconnect Clients parameter to Runtime application
131024.153705 EnvDBCvt100 EnvDBCvt100.c 349 ( 0)
Deleting Batch Stats parameter from Runtime application if found
131024.153705 EnvDBCvt100 EnvDBCvt100.c 471 ( 0)
Remove TIM related Functions
131024.153705 EnvDBCvt100 EnvDBCvt100.c 508 ( 0)
Sucessfully migrated
131024.153706 EnvDBCvt100 DBCvt.c 238 ( 0)
***** CONVERSION COMPLETED: ok *****
```

When you run the **cvtmaster** utility again on the same **config\_A** folder in the same location, you will not get a new **DBCvt.txt** log file. This is because the migration fails, but it looks like it succeeded. The migration runs in a few seconds.

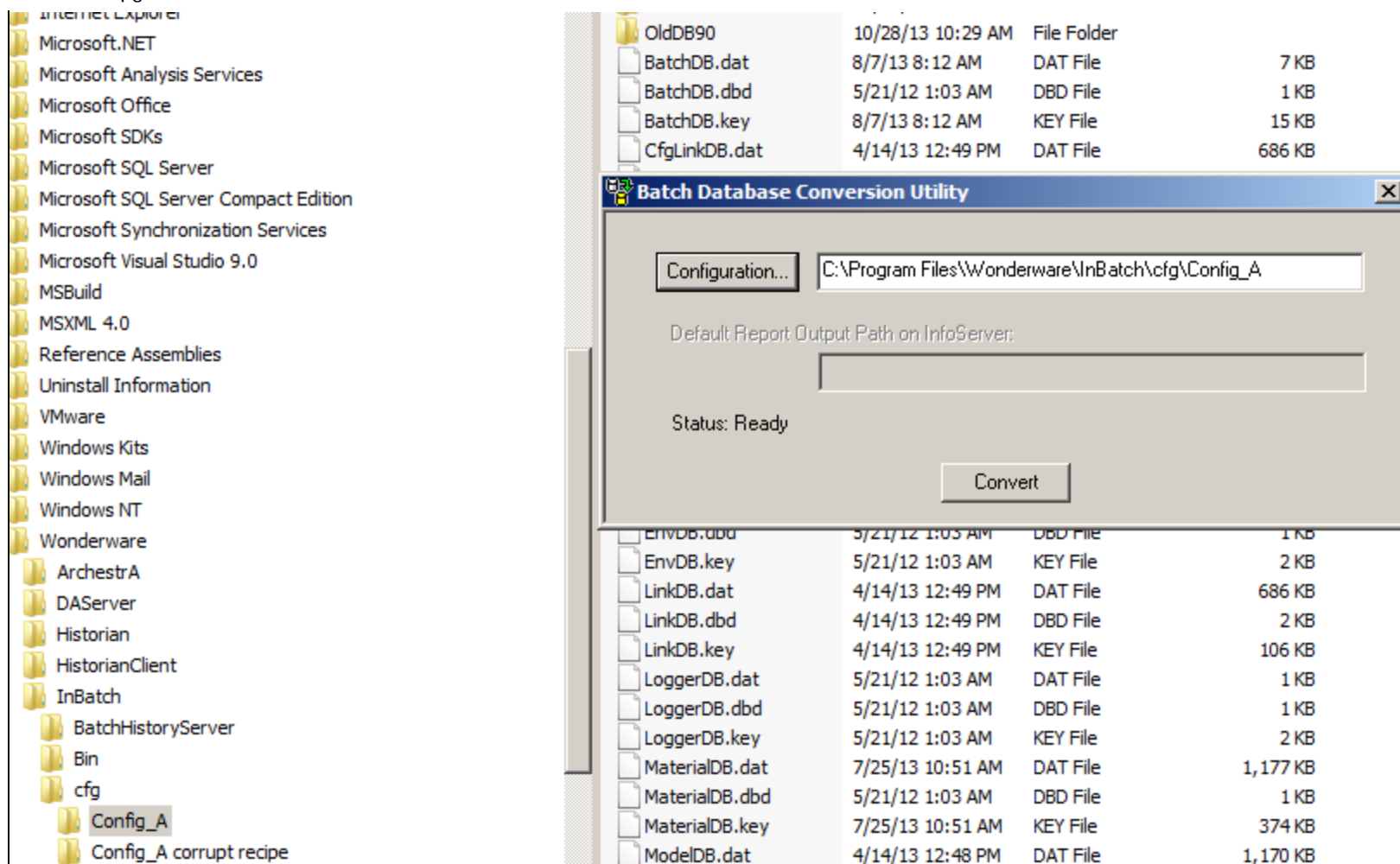
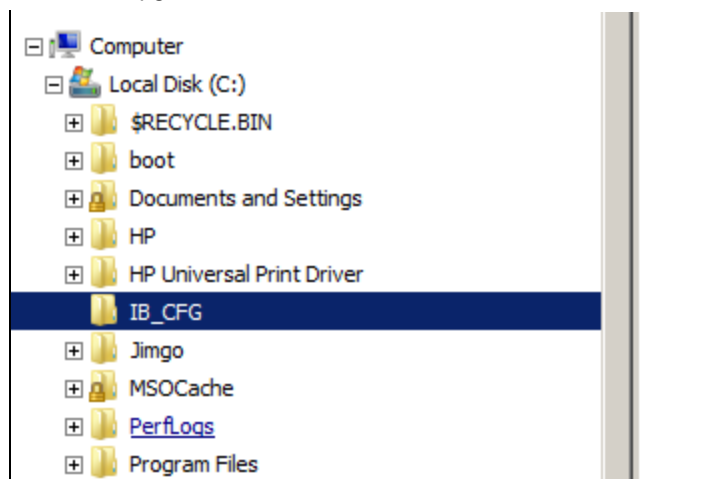


FIGURE 3: RERUN THE CONVERSION ON CONFIG\_A

There is no DBcvt.txt in the config\_A when the cvtmaster was run a second time.

## Resolution

1. Create a new folder on the drive. In this example the new folder is called **IB\_CFG** and it's located on the C drive.



**FIGURE 4: NEW FILE FOR CONVERSION**

2. Copy in the contents of the **config\_A** file that needs to be migrated again into the new folder.
3. Start the **cvtmaster.exe** and point it at the new folder (**IB\_CFG**) and run the conversion.

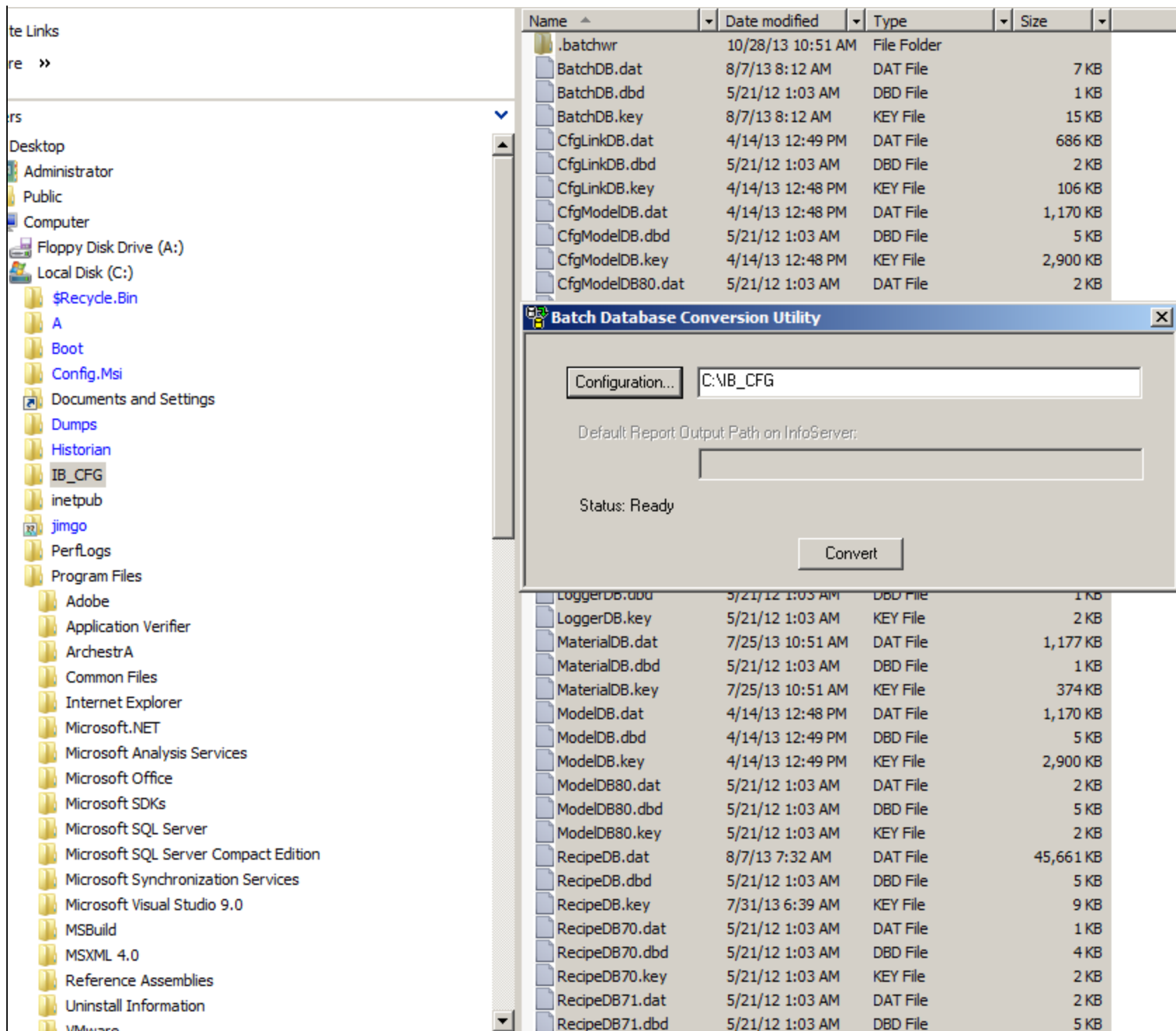


FIGURE 5: RUN CONVERSION UTILITY AGAINST COPIED FILES

You will see that the **DBCvt.txt** file was created in the new folder.

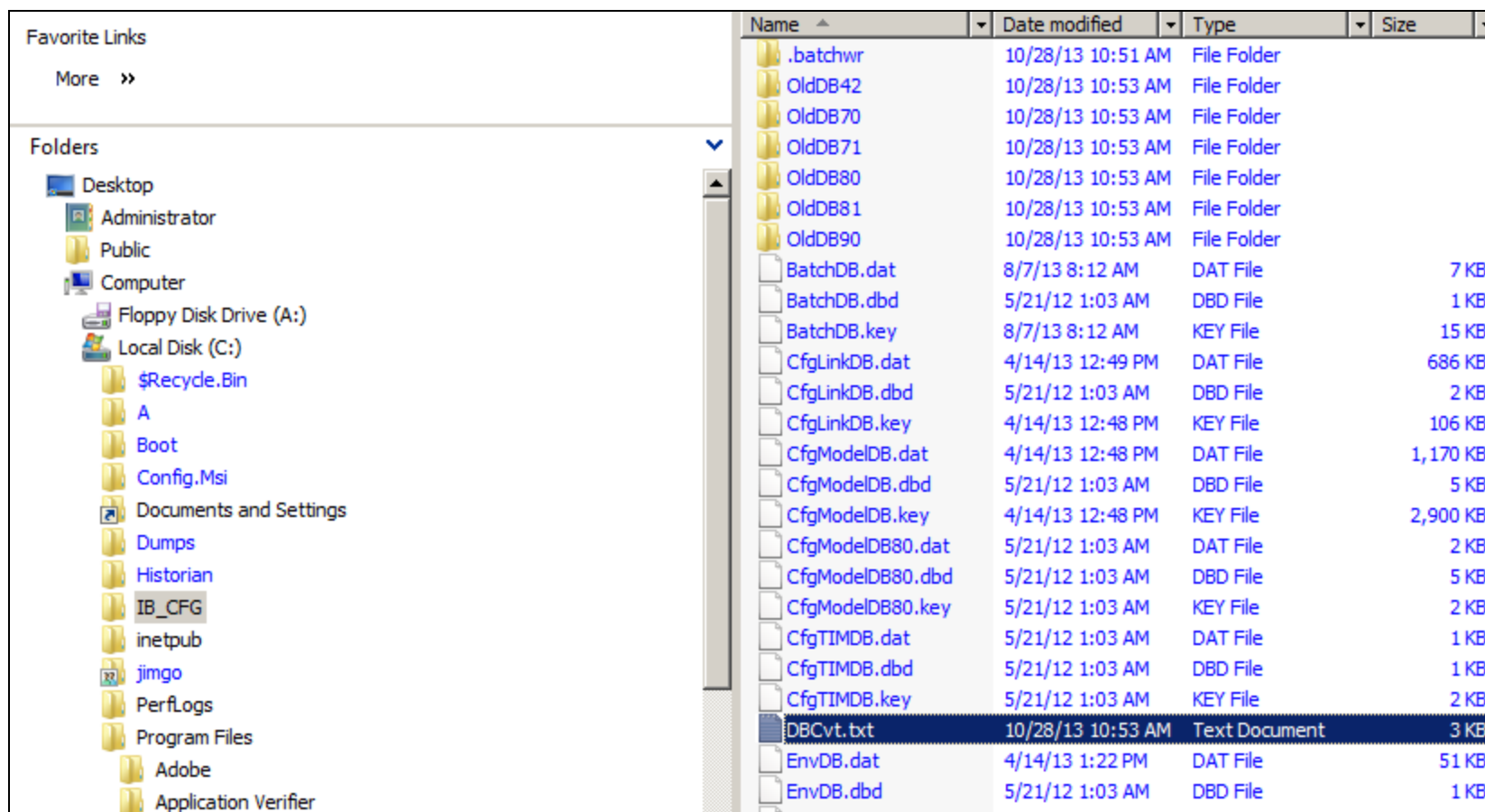


FIGURE 6: DBCVT.TXT IS PRESENT AFTER CONVERSION

4. Open the **DBCvt.txt** and you will see the conversion ran with no errors.

```

131028.105321 EnvDBCvt90 DBCvt.c 168 ( 0)
***** 8.1-->9.5 CONVERSION INITIATED *****
131028.105321 EnvDBCvt90 DBCvt.c 182 ( 0)
8.1 path: (.\OldDB81\), 9.5 path: (.)
131028.105321 EnvDBCvt90 EnvDBCvt90.c 54 ( 0)
***** Running EnvDBCvt90 *****
131028.105321 EnvDBCvt90 EnvDBCvt90.c 115 ( 0)
Entered EnvConvert
131028.105321 EnvDBCvt90 EnvDBCvt90.c 124 ( 0)
completed IBMX assignment to Applications struct
131028.105321 EnvDBCvt90 EnvDBCvt90.c 134 ( 0)
IBMX already found skipping Migration
131028.105321 EnvDBCvt90 EnvDBCvt90.c 210 ( 0)
Migrating BatchManager options

```

```
131028.105321 EnvDBCvt90 EnvDBCvt90.c 244 ( 0)
Adding Disconnect Clients parameter
131028.105321 EnvDBCvt90 EnvDBCvt90.c 248 ( 0)
Added Disconnect Clients parameter successfully
131028.105321 EnvDBCvt90 EnvDBCvt90.c 244 ( 0)
Adding Batch Stats parameter
131028.105321 EnvDBCvt90 EnvDBCvt90.c 248 ( 0)
Added Batch Stats parameter successfully
131028.105321 EnvDBCvt90 EnvDBCvt90.c 255 ( 0)
Assigning Disconnect Clients parameter to Runtime application
131028.105321 EnvDBCvt90 EnvDBCvt90.c 260 ( 0)
Deleting Batch Stats parameter from Runtime application if found
131028.105321 EnvDBCvt90 EnvDBCvt90.c 382 ( 0)
Remove TIM related Functions
131028.105321 EnvDBCvt90 EnvDBCvt90.c 419 ( 0)
Successfully migrated
131028.105322 EnvDBCvt90 DBCvt.c 238 ( 0)
***** CONVERSION COMPLETED: ok *****
131028.105322 CfgLinkDBCvt90 DBCvt.c 168 ( 0)
***** 8.1-->9.5 CONVERSION INITIATED *****
131028.105322 CfgLinkDBCvt90 DBCvt.c 182 ( 0)
8.1 path: (.\OldDB81\), 9.5 path: (.)
131028.105322 CfgLinkDBCvt90 CfgLinkDBCvt90.c 53 ( 0)
***** Running CfgLinkDBCvt *****
131028.105323 CfgLinkDBCvt90 CfgLinkDBCvt90.c 119 ( 0)
Galaxy record found skipping migration
131028.105324 CfgLinkDBCvt90 DBCvt.c 238 ( 0)
***** CONVERSION COMPLETED: ok *****
```

5. After the conversion is complete and successful, copy/paste the files from the conversion directory into the working **Config\_A** at **Program Files\Wonderware\InBatch\CFG\Config\_A**.

J. Godfrey

*Tech Notes* are published occasionally by Wonderware Technical Support. Publisher: Invensys Systems, Inc., 26561 Rancho Parkway South, Lake Forest, CA 92630. There is also technical information on our software products at [Wonderware Technical Support](#).

For technical support questions, send an e-mail to [wwsupport@invensys.com](mailto:wwsupport@invensys.com).

 [Back to top](#)

©2013 Invensys Systems, Inc. All rights reserved. No part of the material protected by this copyright may be reproduced or utilized in any form or by any means, electronic or mechanical, including photocopying, recording, broadcasting, or by any information storage and retrieval system, without permission in writing from Invensys Systems, Inc.

[Terms of Use](#).