

BALDOR® • RELIANCE 

Product Information Packet

IDCSWDM3542

.75HP,1745RPM,3PH,60HZ,56C,3518M,TENV,F1

Part Detail							
Revision:	U	Status:	PRD/A	Change #:		Proprietary:	No
Type:	AC	Elec. Spec:	35WGP559	CD Diagram:	CD0005	Mfg Plant:	
Mech. Spec:	35S638	Layout:	35LYS638	Poles:	04	Created Date:	06-13-2008
Base:	RG	Eff. Date:	08-09-2018	Leads:	9#18		

Specs			
Catalog Number:	IDCSWDM3542	Insulation Class:	H
Enclosure:	TENV	Inverter Code:	Inverter Duty
Frame:	56C	KVA Code:	M
Frame Material:	Stainless Steel	Lifting Lugs:	No Lifting Lugs
Output @ Frequency:	.750 HP @ 60 HZ	Locked Bearing Indicator:	Locked Bearing
Synchronous Speed @ Frequency:	1800 RPM @ 60 HZ	Motor Lead Quantity/Wire Size:	9 @ 18 AWG
Voltage @ Frequency:	208.0 V @ 60 HZ	Motor Lead Exit:	Ko Box
	230.0 V @ 60 HZ	Motor Lead Termination:	Flying Leads
	460.0 V @ 60 HZ	Motor Type:	3518M
XP Class and Group:	None	Mounting Arrangement:	F1
XP Division:	Not Applicable	Power Factor:	78
Agency Approvals:	UR	Product Family:	Wash Down Paint Free
	CSA	Pulley End Bearing Type:	Sealed Bearing
Auxillary Box:	No Auxillary Box	Pulley Face Code:	C-Face
Auxillary Box Lead Termination:	None	Pulley Shaft Indicator:	Standard
Base Indicator:	Rigid	Rodent Screen:	None
Bearing Grease Type:	Polyrex EM (-20F +300F)	RoHS Status:	ROHS COMPLIANT
Blower:	None	Shaft Extension Location:	Pulley End

Current @ Voltage:	1.080 A @ 460.0 V	Shaft Ground Indicator:	No Shaft Grounding
	2.160 A @ 230.0 V	Shaft Rotation:	Reversible
	2.360 A @ 208.0 V	Shaft Slinger Indicator:	No Slinger
Design Code:	B	Speed Code:	Single Speed
Drip Cover:	No Drip Cover	Motor Standards:	NEMA
Duty Rating:	CONT	Starting Method:	Direct on line
Electrically Isolated Bearing:	Not Electrically Isolated	Thermal Device - Bearing:	NONE (OLD)
Feedback Device:	NO FEEDBACK	Thermal Device - Winding:	Normally Closed Thermostat
Front Face Code:	Standard	Vibration Sensor Indicator:	No Vibration Sensor
Front Shaft Indicator:	None	Winding Thermal 1:	None
Heater Indicator:	No Heater	Winding Thermal 2:	None

Nameplate NP1608L	
CAT NO	IDCSWDM3542
SPEC.	35S638P559G1
FRAME	56C HP .75 TE
VOLTS	208-230/460
MAG CUR	1.28/.64 FLA 2.36-2.16/1.08
RPM	1740 RPM MAX 6000
HZ	60 PH 3 CLASS H
SER.F.	1.00 DES B SL HZ 1.83
NEMA-NOM-EFF	82.5 WK2 0.106
BLWR V	PH HZ A
RATING	40C AMB-CONT
DE BRG	6205 ODE BRG 6203
CC	SN

Parts List		
Part Number	Description	Quantity
SA174395	SA 35S638P559G1	1.000 EA
RA162527	RA 35S638P559G1	1.000 EA
NS2512A01	INSULATOR, CONDUIT BOX X	1.000 EA
35CB5001A03	CONDUIT BOX KIT, FOR SUPER II WASHDOWN	1.000 EA
11XW1032G06	10-32 X .38, TAPTITE II, HEX WSHR SLTD U	1.000 EA
35EP3122D00U	MASTER ODE,203 BRG,.125NPT DRNS(BALL BUR	1.000 EA
HW4500A33	1/8 NPT STAINLESS,HOLO-KROME #13002,PRES	3.000 EA
HW5100A03	WAVY WASHER (W1543-017)	1.000 EA
35EP3307E00U	MASTER DE,205 BRG,1.623SH,.125NPT DRNS,C	1.000 EA
HW4500A33	1/8 NPT STAINLESS,HOLO-KROME #13002,PRES	3.000 EA
HW4606A02	JM CLIPPER/SEAL (LWE-0938-1624-AL23)	1.000 EA
12XN1032S20	10-32 X 1-1/4 HEX M.S. , STAINLESS STEEL	2.000 EA
HA1049A01	DUBO LOK WASHER SIZE 10 (NYLON LOCK SEAL	2.000 EA
HA1049A01	DUBO LOK WASHER SIZE 10 (NYLON LOCK SEAL	4.000 EA
HW2502D13	SS KEY, 3/16 SQ X 1.375	1.000 EA
HA7000A04	KEY RETAINER 0.625 DIA SHAFTS	1.000 EA
MJ5001A02	732 CL SEALANT 3 OZ DIXIE BEARING 289100	0.001 EA
85XU0407S04	4X1/4 U DRIVE PIN STAINLESS	2.000 EA
LB1164	LABEL,WARNING AND DRAIN	1.000 EA
HA5027A02	HA4054 T-DRAIN X2 BAGGED WITH LABEL	1.000 EA
MJ1000A02	GREASE, POLYREX EM EXXON (USe 4824-15A)	0.050 LB
HA3100S12	THRUBOLT 7.625 LENGTH 1.250 TH LENGTH SS	4.000 EA
LC0145B01	CONNECTION LABEL	1.000 EA
NP1608L	SS WD INV UL CSA CC REV MTG	1.000 EA

Parts List (continued)		
Part Number	Description	Quantity
35PA1066	PKG GRP, PRINT PK1008A06	1.000 EA
MN416A01	TAG-INSTAL-MAINT no wire (1200/bx) 5/18	1.000 EA

AC Induction Motor Performance Data

Page 1 of 1



AC Induction Motor Performance Data

Record # 26878

Typical performance - not guaranteed values

Winding: 35WGP559	Type: 3519M	Enclosure: TENV
--------------------------	--------------------	------------------------

Nameplate Data			General Characteristics at 460 V, 60 Hz: High Volt Connection		
Rated Output (HP)	.75		Full Load Torque	2.27 LB-FT	
Volts	208-230/460		Start Configuration	DOL	
Full Load Amps	2.36-2.16/1.08		Break Down Torque	10.4 LB-FT	
R.P.M.	1740		Pull-Up Torque	6.61 LB-FT	
Hz	60	Phase	3	Locked-rotor Torque	7.4 LB-FT
NEMA Design Code	B	KVA Code	M	Starting Current	9.77 Amps
Service Factor	1		No-load Current	0.64 Amps	
NEMA Nom. Eff.	82.5	P.F.	78	Line-line Res. @ 25°C.	23.5 Ohms
Rating - Duty	40C AMB-CONT		Temp. Rise @ Rated Load	77°C	
S.F. Amps	2.8-2.54/1.27		Temp. Rise @ S.F. Load		

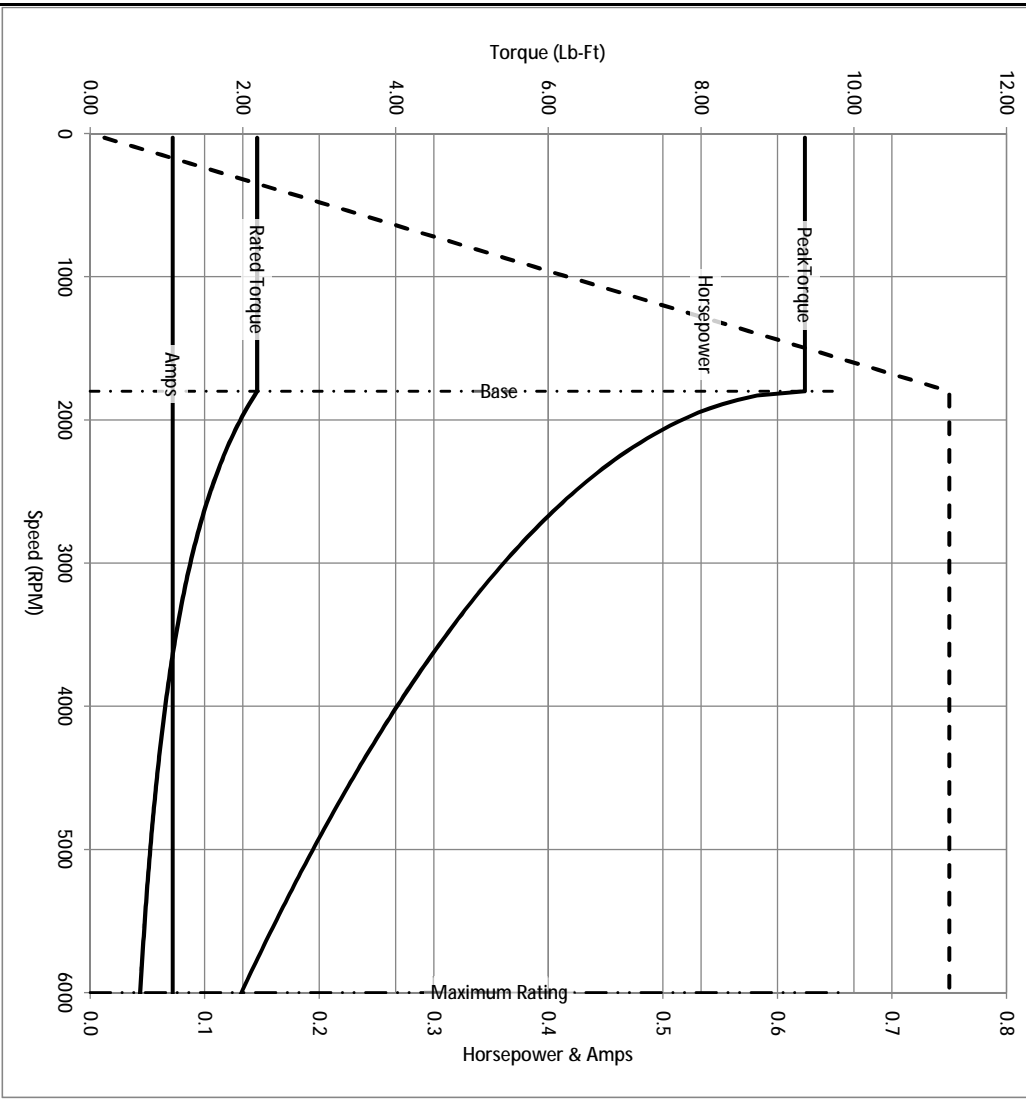
Load Characteristics at 460 Volts, 60 Hz, 0.75 HP

% of Rated Load	25	50	75	100	125	150	S.F.
Power Factor	35	56	70	78	84	88	
Efficiency	73	81.9	83.8	83.5	82.5	80.6	
Speed	1787	1773	1758	1743	1728	1709	
Line Amperes	0.679	0.776	0.909	1.08	1.27	1.49	

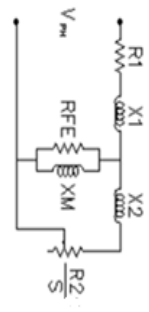
Baldor Electric Company Fort Smith, Arkansas



Catalog	IDCSWDM3542	NP VOLTS	208-230/460	ENCLOSURE	TENV	WYE CONN EQ CRT OHMS PER PHASE (BASE RATING, 20C)
FRAME	56C	NP AMPS	2.36-2.16/1.08	Base Volts	460	R1 11.500 X1 14.221
HP	0.75 HP	DUTY	Cont	Base AMPS	1.08	R2 6.840 X2 9.434
BASE SPEED	1800	MAX SAFE RPM	6000	Slip Hz	1.90	XM1 368.350
PHASE/HZ	3/60	AMB ⁰ /TNSDL	40/H	WK ² (lb-ft ²)	0.112	



Remarks: Calculated Data

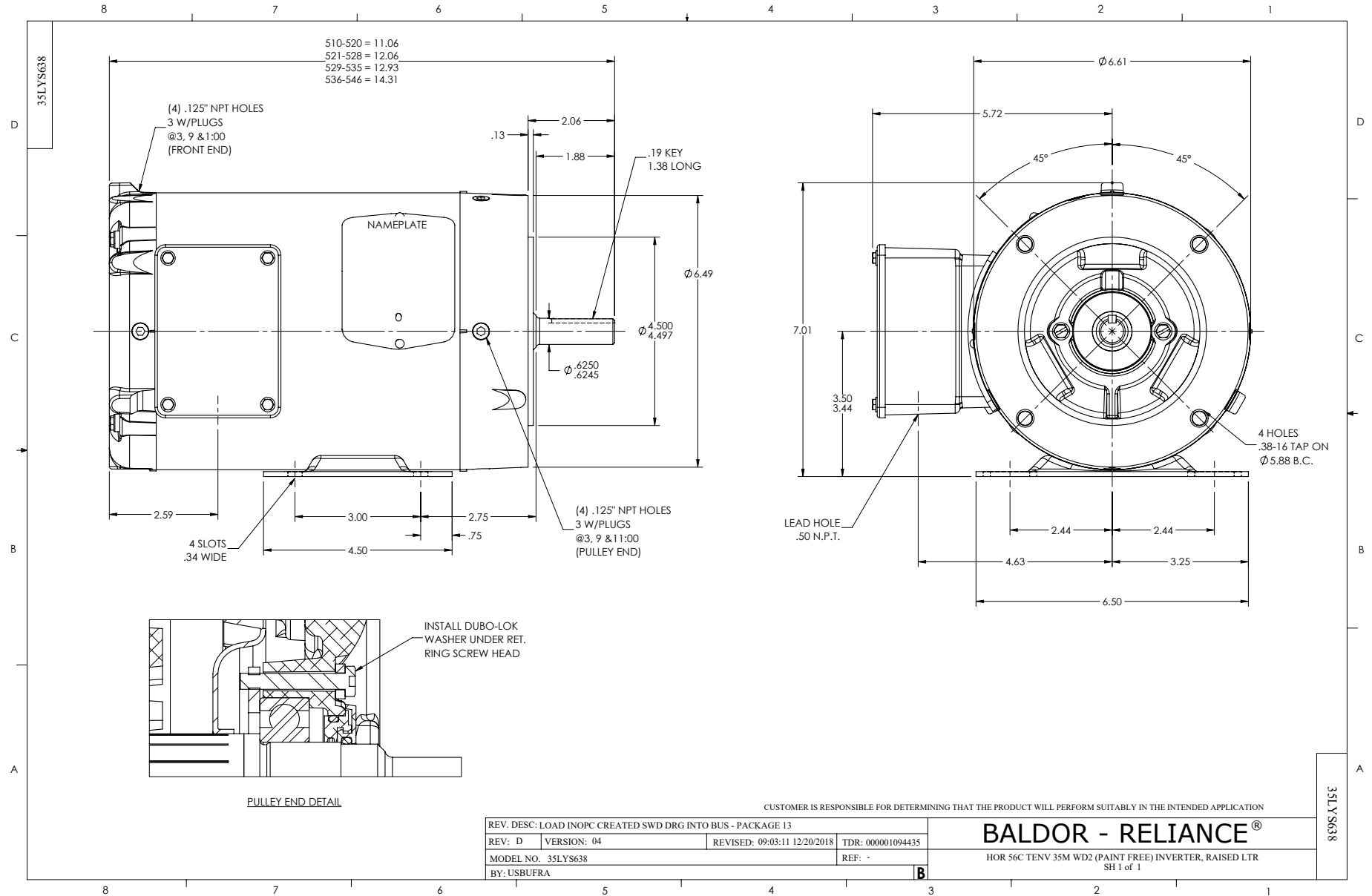


BALDOR DR BY ENR
 CK BY
 APP BY ENR
 DATE 3/6/2013

A MEMBER OF THE ABB GROUP

A-C MOTOR
 PERFORMANCE CURVES

35S638P559G1
 ISSUE DATE 3/6/2013



CD0005

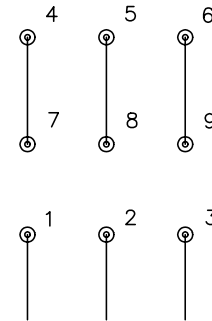


LOW VOLTAGE
(2Y)



LINE

HIGH VOLTAGE
(1Y)



LINE

NOTES:

1. INTERCHANGE ANY TWO LINE LEADS TO REVERSE ROTATION.
2. OPTIONAL THERMOSTATS ARE PROVIDED WHEN SPECIFIED.
3. ACTUAL NUMBER OF INTERNAL PARALLEL CIRCUITS MAY BE A MULTIPLE OF THOSE SHOWN ABOVE.
4. LEAD COLORS ARE OPTIONAL. LEADS MUST ALWAYS BE NUMBERED AS SHOWN.

REV. DESC: REVISE TO SHOW OPTIONAL COLORS			
REV. LTR: E	BY: JLP	REVISED: 01/19/99 10:15	TDR: 0171435
90000		FILE: AAA00005140	MDL: -
		MTL: -	

BALDOR ELECTRIC Co.

3PH, DV, 9 LEADS

CD0005