

BALDOR® • RELIANCE 

Product Information Packet

IDCSWDM3615T

5HP,1750RPM,3PH,60HZ,184TC,3646M,TEFC,F1

| Part Detail | | | | | | | |
|-------------|--------|-------------|------------|-------------|--------|---------------|------------|
| Revision: | M | Status: | PRD/A | Change #: | | Proprietary: | No |
| Type: | AC | Elec. Spec: | 36WGS719 | CD Diagram: | CD0005 | Mfg Plant: | |
| Mech. Spec: | 36K201 | Layout: | 36LYK201 | Poles: | 04 | Created Date: | 06-04-2012 |
| Base: | RG | Eff. Date: | 06-01-2018 | Leads: | 9#16 | | |

| Specs | | | |
|---------------------------------|-------------------------|--------------------------------|----------------------|
| Catalog Number: | IDCSWDM3615T | Insulation Class: | H |
| Enclosure: | TEFC | Inverter Code: | Inverter Duty |
| Frame: | 184TC | KVA Code: | J |
| Frame Material: | Stainless Steel | Lifting Lugs: | No Lifting Lugs |
| Output @ Frequency: | 5.000 HP @ 60 HZ | Locked Bearing Indicator: | Locked Bearing |
| Synchronous Speed @ Frequency: | 1800 RPM @ 60 HZ | Motor Lead Quantity/Wire Size: | 9 @ 16 AWG |
| Voltage @ Frequency: | 230.0 V @ 60 HZ | Motor Lead Exit: | Ko Box |
| | 460.0 V @ 60 HZ | Motor Lead Termination: | Flying Leads |
| XP Class and Group: | None | Motor Type: | 3646M |
| XP Division: | Not Applicable | Mounting Arrangement: | F1 |
| Agency Approvals: | UR | Power Factor: | 81 |
| | CSA | Product Family: | Wash Down Paint Free |
| Auxillary Box: | No Auxillary Box | Pulley End Bearing Type: | Ball |
| Auxillary Box Lead Termination: | None | Pulley Face Code: | C-Face |
| Base Indicator: | Rigid | Pulley Shaft Indicator: | Standard |
| Bearing Grease Type: | Polyrex EM (-20F +300F) | Rodent Screen: | None |
| Blower: | None | Shaft Extension Location: | Pulley End |
| Current @ Voltage: | 13.000 A @ 230.0 V | Shaft Ground Indicator: | No Shaft Grounding |

| | | | |
|---------------------------------------|---------------------------|------------------------------------|----------------------------|
| | 6.500 A @ 460.0 V | Shaft Rotation: | Reversible |
| Design Code: | B | Shaft Slinger Indicator: | Shaft Slinger |
| Drip Cover: | No Drip Cover | Speed Code: | Single Speed |
| Duty Rating: | CONT | Motor Standards: | NEMA |
| Electrically Isolated Bearing: | Not Electrically Isolated | Starting Method: | Direct on line |
| Feedback Device: | NO FEEDBACK | Thermal Device - Bearing: | NONE (OLD) |
| Front Face Code: | Standard | Thermal Device - Winding: | Normally Closed Thermostat |
| Front Shaft Indicator: | None | Vibration Sensor Indicator: | No Vibration Sensor |
| Heater Indicator: | No Heater | Winding Thermal 1: | None |
| | | Winding Thermal 2: | None |

| Nameplate NP1608L | |
|-------------------|----------------------|
| CAT NO | IDCSWDM3615T |
| SPEC. | 36K201S719G1 |
| FRAME | 184TC HP 5 TE |
| VOLTS | 230/460 |
| MAG CUR | 5.8/2.9 FLA 13/6.5 |
| RPM | 1750 RPM MAX 6000 |
| HZ | 60 PH 3 CLASS H |
| SER.F. | 1.00 DES B SL HZ 1.7 |
| NEMA-NOM-EFF | 89.5 WK2 0.428 |
| BLWR V | PH HZ A |
| RATING | 40C AMB-CONT |
| DE BRG | 6206 ODE BRG 6205 |
| CC | 010A SN |

| Parts List | | |
|---------------|--|----------|
| Part Number | Description | Quantity |
| SA245911 | SA 36K201S719G1 | 1.000 EA |
| RA232796 | RA 36K201S719G1 | 1.000 EA |
| 36FN3000A01SP | EXFN, PLASTIC, 7.00 OD, .912 ID | 1.000 EA |
| 36CB2000A06MU | CONDUIT BOX, MACH W/.75 NPT, BALL BURNIS | 1.000 EA |
| 37GS3011 | 1/8"WHITE NEOPRENE BOX GS | 1.000 EA |
| 10XN2520A10 | 1/4-20X 5/8 HEX HD X | 2.000 EA |
| HA5027A04 | HA4054 T-DRAIN X2 BAGGED | 1.000 EA |
| 11XW1032G06 | 10-32 X .38, TAPTITE II, HEX WSHR SLTD U | 1.000 EA |
| HW3001B02 | BRASS CUP WASHER W/GROUND SYMBOL TAB, | 1.000 EA |
| 36EP3101B27MU | FR EP,205 BRG-ENCL, (FOR S.P. #9D) | 1.000 EA |
| HW4500A33 | 1/8 NPT STAINLESS,HOLO-KROME #13002,PRES | 3.000 EA |
| HW5100A05 | WVY WSHR F/205 & 304 BRGS | 1.000 EA |
| 36EP3301A32MU | PU EP,182-4TC 206 BRG OIL SEAL NO GSR-BA | 1.000 EA |
| HW4500A33 | 1/8 NPT STAINLESS,HOLO-KROME #13002,PRES | 3.000 EA |
| 10XN2520S28 | 1/4-20X 1 3/4 HEX HD SS X | 4.000 EA |
| HA1049A02 | DUBO LOK WASHER SIZE 1/4 (NYLON LOCK SEA | 4.000 EA |
| HA1049A02 | DUBO LOK WASHER SIZE 1/4 (NYLON LOCK SEA | 4.000 EA |
| 51XB1214A16 | 12-14X1.00 HXWSSLD SERTYB | 1.000 EA |
| 36FH4011 | WASHDOWN FAN COVER #304 STAINLESS W/NOTC | 1.000 EA |
| 11XB1016S07 | 10-16X7/16HX WS SLD TYP BTDR 13817 | 3.000 EA |
| 36CB4517 | LIPPED CB LID #304 STAINLESS - CLEANED | 1.000 EA |
| 37GS3010SP | 1/16"WHITE LID GASKET | 1.000 EA |
| 59XW0832S07 | TAPTITE II,HEX WSHR UNSLTD SER,410 S.S., | 4.000 EA |
| HW4600B32SP | V-RING SLINGER 1.000 X 1.540 X .24 VITON | 1.000 EA |

| Parts List (continued) | | |
|-------------------------------|--|-----------------|
| Part Number | Description | Quantity |
| HW4606A03 | JM CLIPPER/SEAL (LWE-1156-1875-AL44) | 1.000 EA |
| HW2502E16 | #303 SS,SQ KEY 1/4 X 1.750 | 1.000 EA |
| HA7000A02 | KEY RETAINER RING, 1 1/8 DIA, 1 3/8 DIA | 1.000 EA |
| MJ5001A02 | 732 CL SEALANT 3 OZ DIXIE BEARING 289100 | 0.001 EA |
| 85XU0407S04 | 4X1/4 U DRIVE PIN STAINLESS | 2.000 EA |
| LB1164 | LABEL,WARNING AND DRAIN | 1.000 EA |
| HW3200S01 | EYEBOLT 3/8-16 X3/4 S.S. TDR #35988 | 1.000 EA |
| MJ1000A02 | GREASE, POLYREX EM EXXON (USe 4824-15A) | 0.050 LB |
| LB1115N | LABEL,LIFTING DEVICE (ON ROLLS) | 1.000 EA |
| HA3101S40 | THRUBOLT 1/4-20 X 12.687 | 4.000 EA |
| LC0145B01 | CONNECTION LABEL | 1.000 EA |
| NP1608L | SS WD INV UL CSA CC REV MTG | 1.000 EA |
| 36PA1001 | PKG GRP, PRINT PK1017A06 | 1.000 EA |
| MN416A01 | TAG-INSTAL-MAINT no wire (1200/bx) 5/18 | 1.000 EA |

AC Induction Motor Performance Data

Page 1 of 1



AC Induction Motor Performance Data

Record # 38663

Typical performance - not guaranteed values

| | | |
|--------------------------|--------------------|------------------------|
| Winding: 36WGS719 | Type: 3646M | Enclosure: TEFC |
|--------------------------|--------------------|------------------------|

| Nameplate Data | | | General Characteristics at 460 V, 60 Hz: High Volt Connection | | |
|-------------------|--------------|----------|--|-------------|--|
| Rated Output (HP) | 5 | | Full Load Torque | 15.2 LB-FT | |
| Volts | 230/460 | | Start Configuration | DOL | |
| Full Load Amps | 13/6.5 | | Break Down Torque | 49.7 LB-FT | |
| R.P.M. | 1750 | | Pull-Up Torque | 27.7 LB-FT | |
| Hz | 60 | Phase | Locked-rotor Torque | 32.3 LB-FT | |
| NEMA Design Code | B | KVA Code | Starting Current | 48.3 Amps | |
| Service Factor | 1 | | No-load Current | 2.91 Amps | |
| NEMA Nom. Eff. | 89.5 | P.F. | Line-line Res. @ 25°C. | 2.3457 Ohms | |
| Rating - Duty | 40C AMB-CONT | | Temp. Rise @ Rated Load | 87°C | |
| S.F. Amps | | | Temp. Rise @ S.F. Load | | |

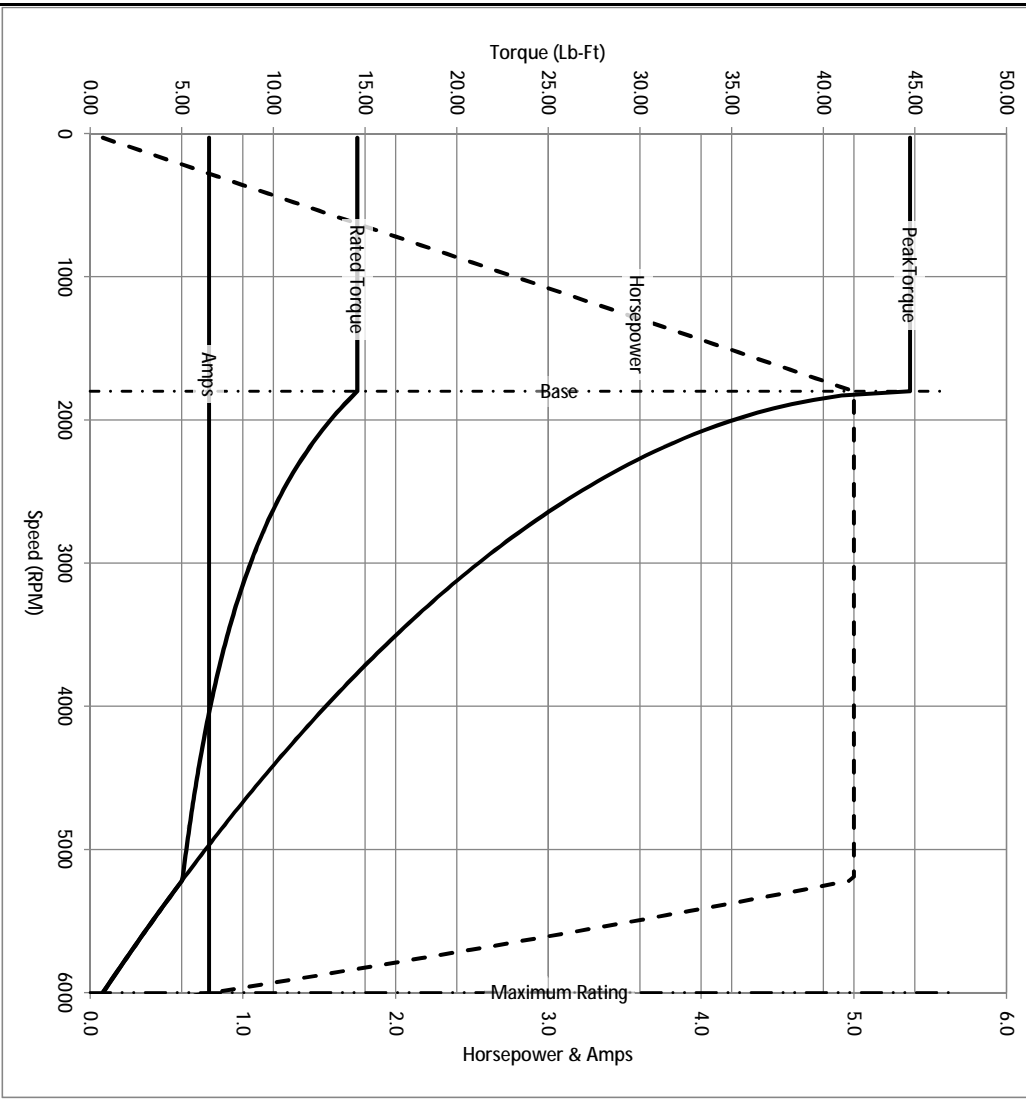
Load Characteristics at 460 Volts, 60 Hz, 5 HP

| % of Rated Load | 25 | 50 | 75 | 100 | 125 | 150 | S.F. |
|-----------------|--------|--------|--------|--------|--------|--------|------|
| Power Factor | 42 | 64 | 75 | 81 | 83 | 84 | |
| Efficiency | 86.6 | 90.5 | 90.7 | 89.8 | 88.4 | 86.5 | |
| Speed | 1788.2 | 1775.9 | 1762.8 | 1747.9 | 1731.9 | 1713.7 | |
| Line Amperes | 3.27 | 4.1 | 5.2 | 6.49 | 8.02 | 9.69 | |

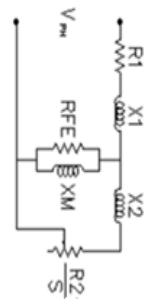
Baldor Electric Company Fort Smith, Arkansas



| | | | | | | |
|------------|--------------|--------------------------|---------|---------------------------------------|-------|---|
| Catalog | IDCSWDM3615T | NP VOLTS | 230/460 | ENCLOSURE | TEFC | WYE CONN EQ CKT OHMS PER PHASE (BASE RATING, 20C) |
| FRAME | 184TC | NP AMPS | 13/6.5 | Base Volts | 460 | R1 1.140 |
| HP | 5 HP | DUTY | Cont | Base AMPS | 6.49 | R2 0.901 |
| BASE SPEED | 1800 | MAX SAFE RPM | 6000 | Slip Hz | 1.73 | XM1 |
| PHASE/HZ | 3/60 | AMB ⁰ /T/NSDL | 40/H | WK ² (lb-ft ²) | 0.428 | XM1 84.471 |



Remarks: Calculated Data

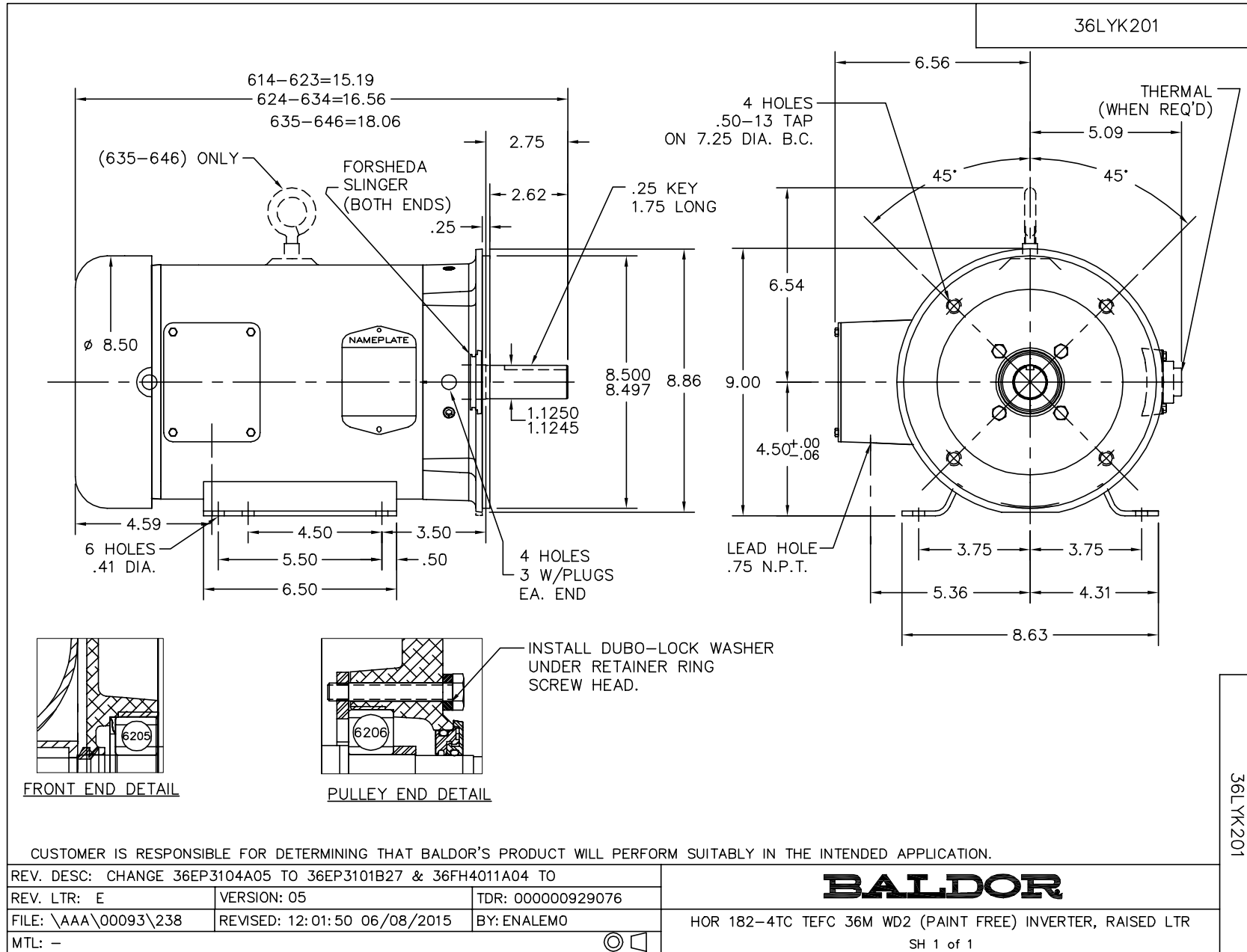


BALDOR DR BY ENR
 CK BY
 APP BY ENR
 DATE 3/6/2013

36K201S719G1

A-C MOTOR
 PERFORMANCE CURVES
 ISSUE DATE 3/6/2013

A MEMBER OF THE ABB GROUP



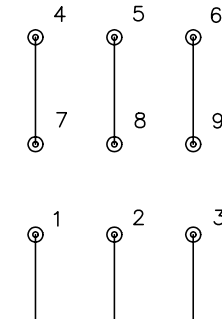
CD0005



LOW VOLTAGE (2Y)



HIGH VOLTAGE (1Y)



NOTES:

1. INTERCHANGE ANY TWO LINE LEADS TO REVERSE ROTATION.
2. OPTIONAL THERMOSTATS ARE PROVIDED WHEN SPECIFIED.
3. ACTUAL NUMBER OF INTERNAL PARALLEL CIRCUITS MAY BE A MULTIPLE OF THOSE SHOWN ABOVE.
4. LEAD COLORS ARE OPTIONAL. LEADS MUST ALWAYS BE NUMBERED AS SHOWN.

| | | | |
|---|---------|-------------------------|--------------|
| REV. DESC: REVISE TO SHOW OPTIONAL COLORS | | | |
| REV. LTR: E | BY: JLP | REVISED: 01/19/99 10:15 | TDR: 0171435 |
| 900000 | | FILE: AAA00005140 | MDL: - |
| | | MTL: - | |

BALDOR ELECTRIC Co.

3PH, DV, 9 LEADS

CD0005