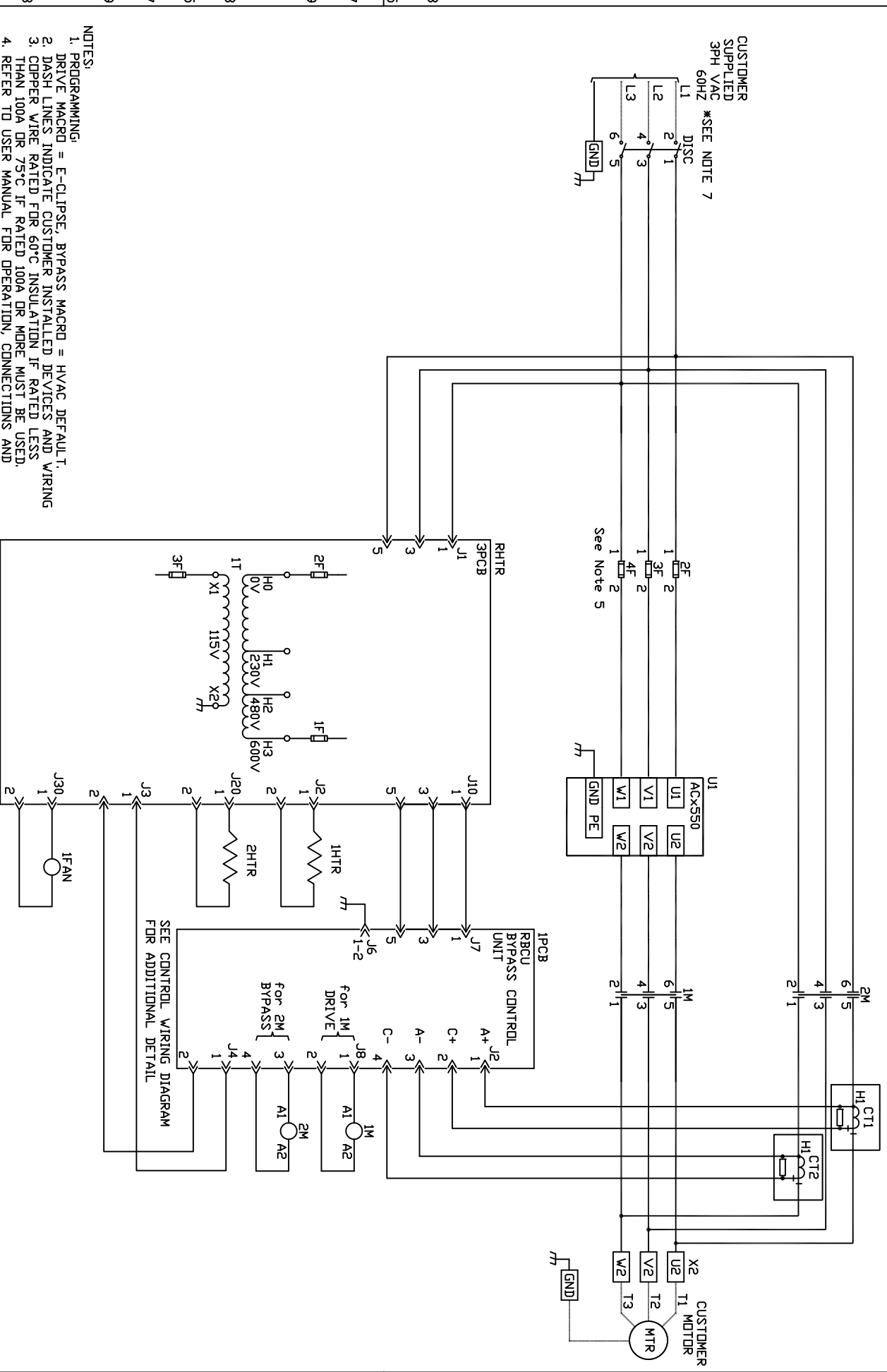


1  
2  
3  
4  
5  
6  
7  
8  
9  
10  
11  
12  
13  
14  
15  
16  
17  
18  
19  
20  
21  
22  
23  
24  
25  
26  
27  
28  
29  
30  
31  
32  
33  
34  
35  
36  
37  
38  
39  
40  
41  
42  
43  
44  
45  
46  
47

- NOTES:
1. PROGRAMMING: DRIVE MACRO = E-CLIPSE, BYPASS MACRO = HVAC, DEFAULT 'I'.
  2. DASH LINES INDICATE CUSTOMER INSTALLED DEVICES AND WIRING.
  3. COPPER WIRE RATED FOR 60°C INSULATION IF RATED LESS THAN 100A OR 75°C IF RATED 100A OR MORE MUST BE USED. REFER TO USER MANUAL FOR OPERATION, CONNECTIONS AND TIGHTENING TORQUE VALUES.
  4. REFER TO USER MANUAL FOR OPERATION, CONNECTIONS AND TIGHTENING TORQUE VALUES.
  5. FUSE RATING LABEL IS NEAR DEVICE.
  6. CUSTOMER REQUIRED TO PROVIDE BRANCH CIRCUIT PROTECTION AND DISCONNECT MEANS PER NEC AND LOCAL CODE.
  7. SHORT CIRCUIT CURRENT: 5kA RMS SYMMETRICAL 600V MAXIMUM.
  8. TRANSFORMER IT IS WIRED FOR APPROPRIATE PRIMARY VOLTAGE.



Rev	Description	Date	Appd	Description	Project Name	Approved By	Responsible	Date	Reference number	Sheet
L	SEE ECN 10003203	06/23/09	DC	ACX550	ACH550 E-CLIPSE BYPASS INPUT DISCONNECT SWITCH	J. Truettner	ABB Inc.	9/19/2007	BD00R734PW-A	A
Based On				Power Wiring Diagram		J. Brenner	ABB Inc.		3AU/A0000014954	B