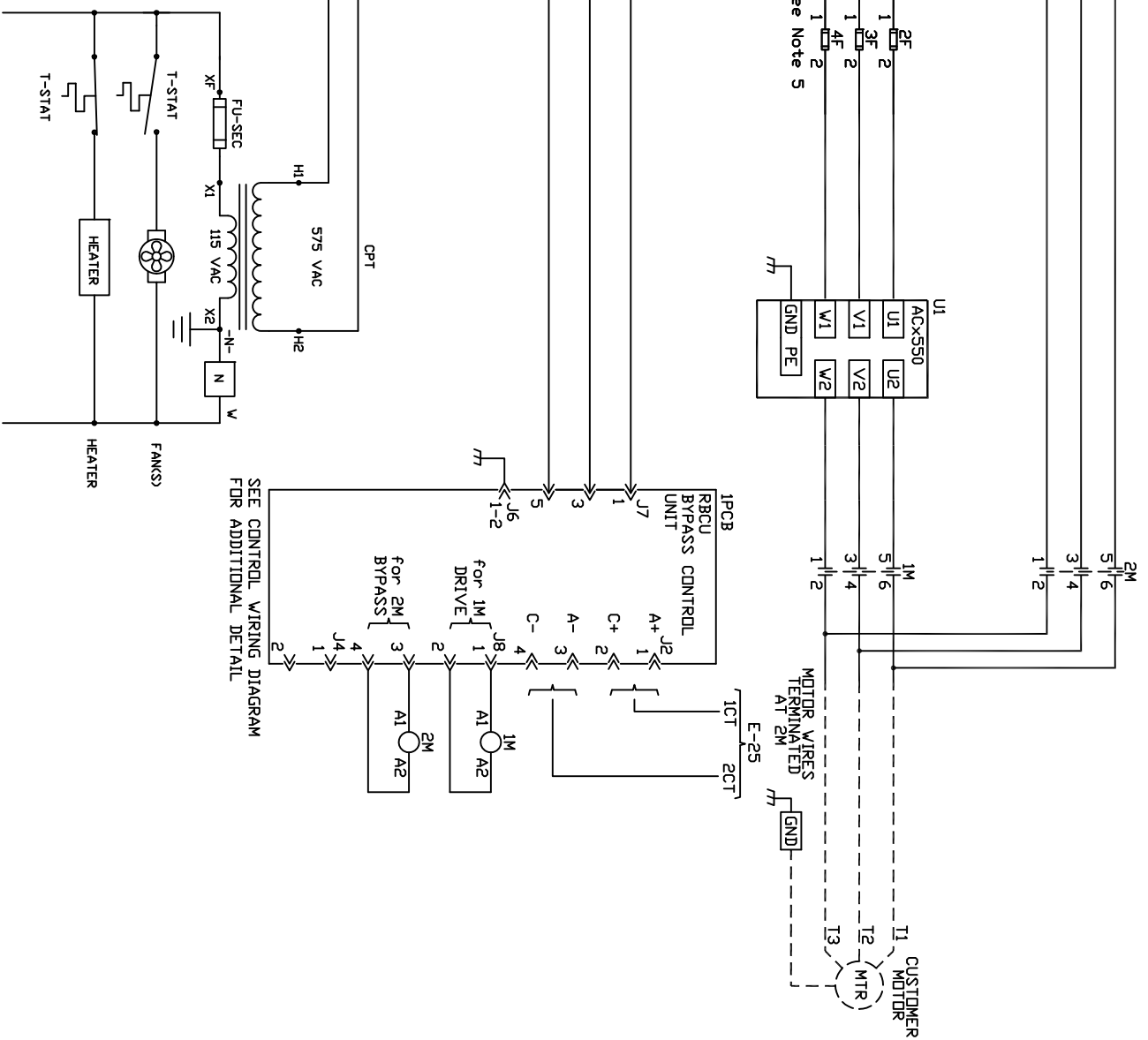


1
3
5
7
9
11
13
15
17
19
21
23
25
27
29
31
33
35
37
39
41
43
45
47

- NOTES:
1. PROGRAMMING: DRIVE MACRO = E-CLIPSE, BYPASS MACRO = HVAC DEFAULT T.
 2. DASH LINES INDICATE CUSTOMER INSTALLED DEVICES AND WIRING
 3. COPPER WIRE RATED FOR 60°C INSULATION IF RATED LESS THAN 100A OR 75°C IF RATED 100A OR MORE MUST BE USED.
 4. REFER TO USER MANUAL FOR OPERATION, CONNECTIONS AND TIGHTENING TORQUE VALUES.
 5. FUSE RATING LABEL IS NEAR DEVICE.
 6. CUSTOMER REQUIRED TO PROVIDE BRANCH CIRCUIT PROTECTION AND DISCONNECT MEANS PER NEC AND LOCAL CODE.
 7. SHORT CIRCUIT CURRENT: SKA RMS SYMMETRICAL 600V MAXIMUM.



A B C D E F G H J K L M N P R S T W X Y

1
3
5
7
9
11
13
15
17
19
21
23
25
27
29
31
33
35
37
39
41
43
45
47

Rev	Description	Date	DC	Description	Project Name	Approved	Responsible	Reference Number	Sheet
L	SEE ECN 10003203	06/23/09	DC	ACH550	ACH550 E-CLIPSE BYPASS INPUT DISCONNECT SWITCH	RIAN	KELLY	BD00R756PW-A	A
Based On				Power Wiring Diagram			LACHANCE	3AUAD0000014954	B