

Focus Safety Light Curtains and Grids

**Safety
Facts**

Inspired by Industry

If your company is concentrating on machine safety to protect your employees and manufacturing operations, then you need the new Focus Safety Light Curtains and Light Grids. The latest in a long list of machine safety innovations from Jokab Safety, the Focus product line is designed to be the most control reliable and dependable presence sensing devices on the market today.

Unparalleled Value

- Offers unsurpassed ease of installation with quick connects and custom brackets
- Both Focus Light Curtains and Grids are rated Category 4 Safety Level and have received all necessary national and international approvals
- LEDs provide easy alignment and indication of pollution, power supply and output status
- Built-in muting capabilities provides muting flexibility with inputs for partial or complete muting

Unique Design

- Every Focus comes standard with LEDs for easy alignment and indication of pollution and power supply, as well as output for diagnostics
 - Standard with bypass lamp supervision, automatic or manual supervised reset, two supervised PNP safety outputs with cross-circuit monitoring, and M12 connections
 - Outputs are overload protected for a maximum load of 500mA
 - Available with either “fixed blanking or—in FB units—“floating blanking” which makes it possible to ‘disconnect’ a defined number of beams from the safety field
 - Focus comes standard* with a preset function for increased operator safety for applications where the operator can physically pass through the light curtain field, preventing the inadvertent reset of a cell or machine
- * not available with FB units*

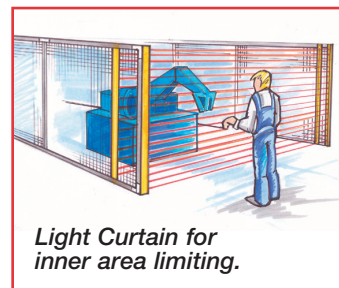
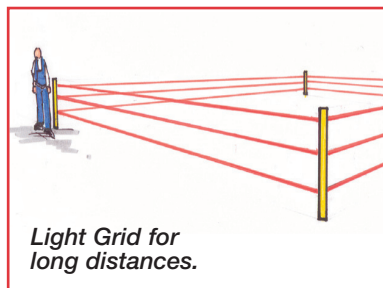
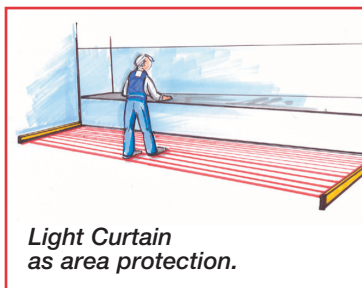
Increase Profits by Reducing Hazards

Focus consists of two units, a transmitter unit and a receiver unit. All the optical units are scanned regularly so that all objects that are placed between the transmitter and the receiver will be detected.

If any light beam is interrupted, the dangerous machine movement will be stopped

by the outputs from the light curtain. The reaction time for the Focus varies from 14ms to 45ms, depending on the number of beams in the light curtain.

The five LEDs in the receiver and the two in the transmitter show the status of the light curtain/grid.



VISION + VERSATILITY = VALUE

≡ JOKAB SAFETY ≡

A MEMBER OF THE ABB GROUP

Muting with FMC and FMI Units

The FMC Focus Muting Connector is a small, optimal unit which is used when the Focus Light Curtain or Light Grid is required to be bypassed for in and out passage to and from a dangerous area. The FMC unit is easily connected to Focus with an M12 connector.

The FMI Focus Muting Indicator is a small unit with built-in muting lamp, reset button, "power off" (for alignment and override). The FMI unit is connected to the FMC unit with M12 connectors to facilitate the muting function connection.

Focus Modular Muting Capabilities

The Focus Safety Light Curtain offers the selection of complete muting of the protective field during the in and out passage of material. Through dipswitch settings in the Focus standard version, it is also capable of muting only specific modules within the protective field.

The Focus is capable of muting independent beam module packets or a combination of

them (up to 4). For example, a box travels down a conveyor and instead of muting the entire light curtain you can mute only modules 1 and 2 — which equates to the height of the box — allowing continual protection on the remaining Safety Light Curtain modules.

The module size is directly dependent on the Focus Light Curtain resolution and length.



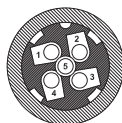
M12 Connection Device with Screw Connectors



M12-C01 (Female)



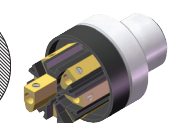
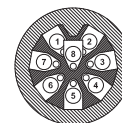
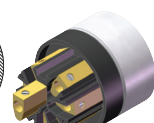
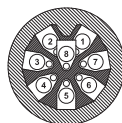
M12-C02 (Male)



M12-C03 (Female)



M12-C04 (Male)



Note: Connector drawings are shown from cable side.

Designed for Universal Applications

- Mechanical/Hydraulic Power Presses
- Stamping, Riveting and Eyelet Operations
- Material Handling Equipment
- Printing Presses
- Molding Presses
- Automated Machinery
- Robotic Cells
- Welding Equipment
- Packaging Machinery
- Conveyors
- Machining Centers