

Tech Note 1025

Hiding the InBatch Security Popup Dialog Box

All Tech Notes, Tech Alerts and KBCD documents and software are provided "as is" without warranty of any kind. See the [Terms of Use](#) for more information.

Topic#: 002859

Created: March 2014

Introduction

This *Tech Note* explains setting up the batch control buttons so the user does not get prompted with the security popup dialog.



FIGURE 1: INBATCH SECURITY CLEARANCE REQUIRED MESSAGE

Application Versions

- InBatch 9.0 thru InBatch 2012 R2.

Procedure

You must create a user both in the **InBatch Security Editor** and in the **Application Function** for the Batch Start. Please see the InBatch user guide's chapter on Security.

1. Use a **Batch List/Batch View/Batch** ActiveX control (Figures 2 and 3 below).

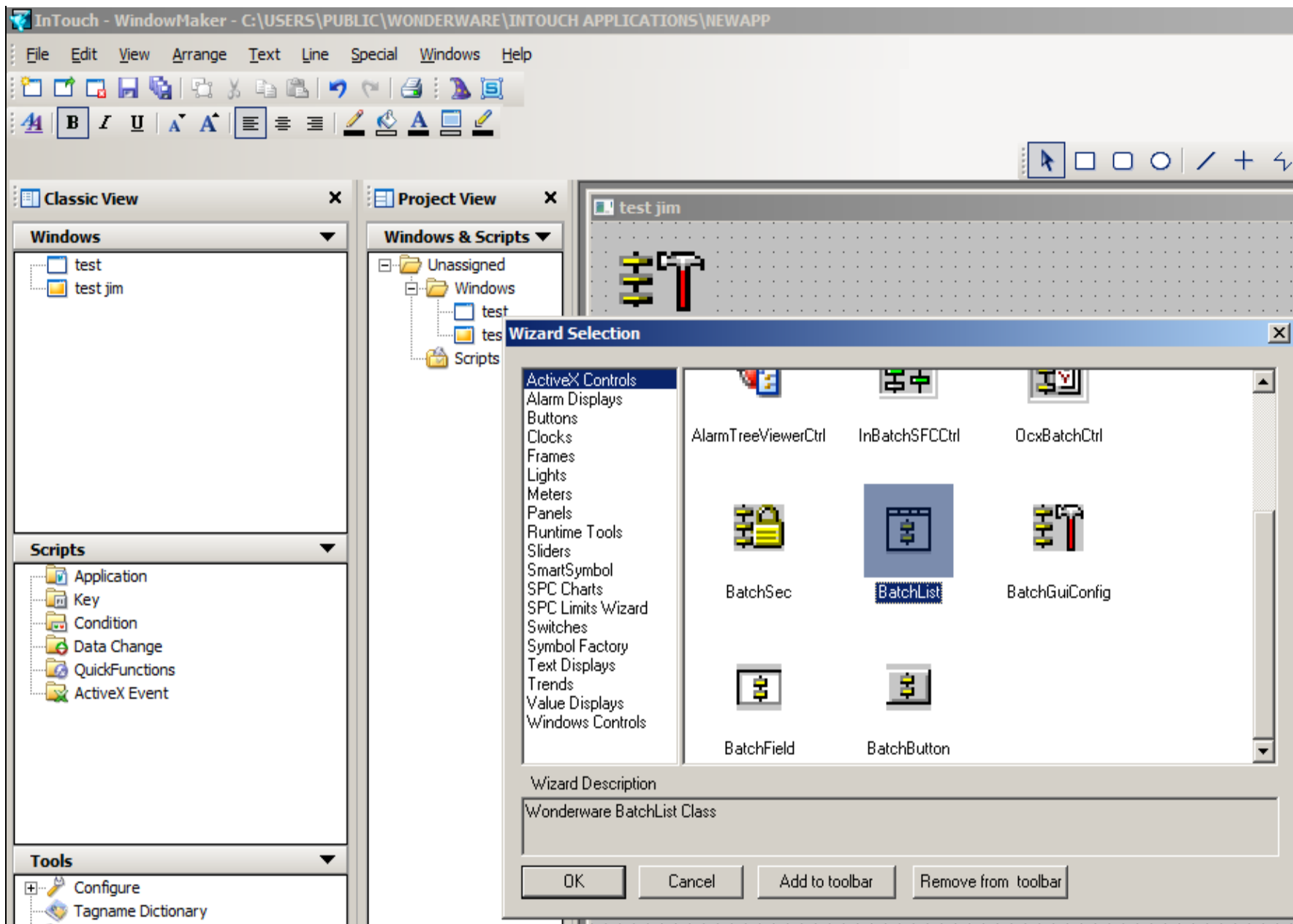


FIGURE 2: BATCHLIST ACTIVE X OBJECT

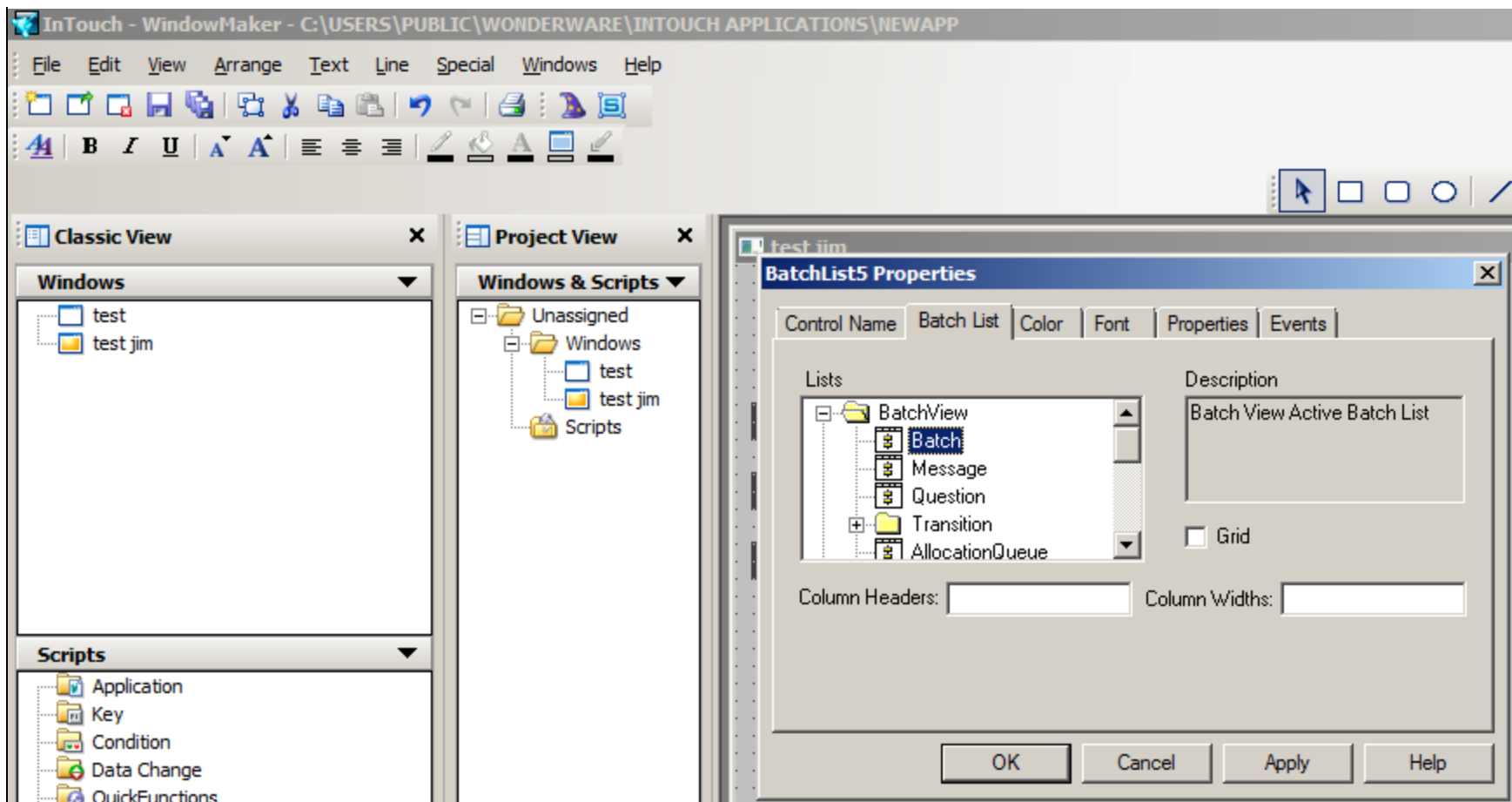


FIGURE 3: BATCH LIST PROPERTIES/BATCHVIEW/BATCH

Note: When this is in Runtime you will need to click on (highlight) the Batch in the list for the buttons to work.

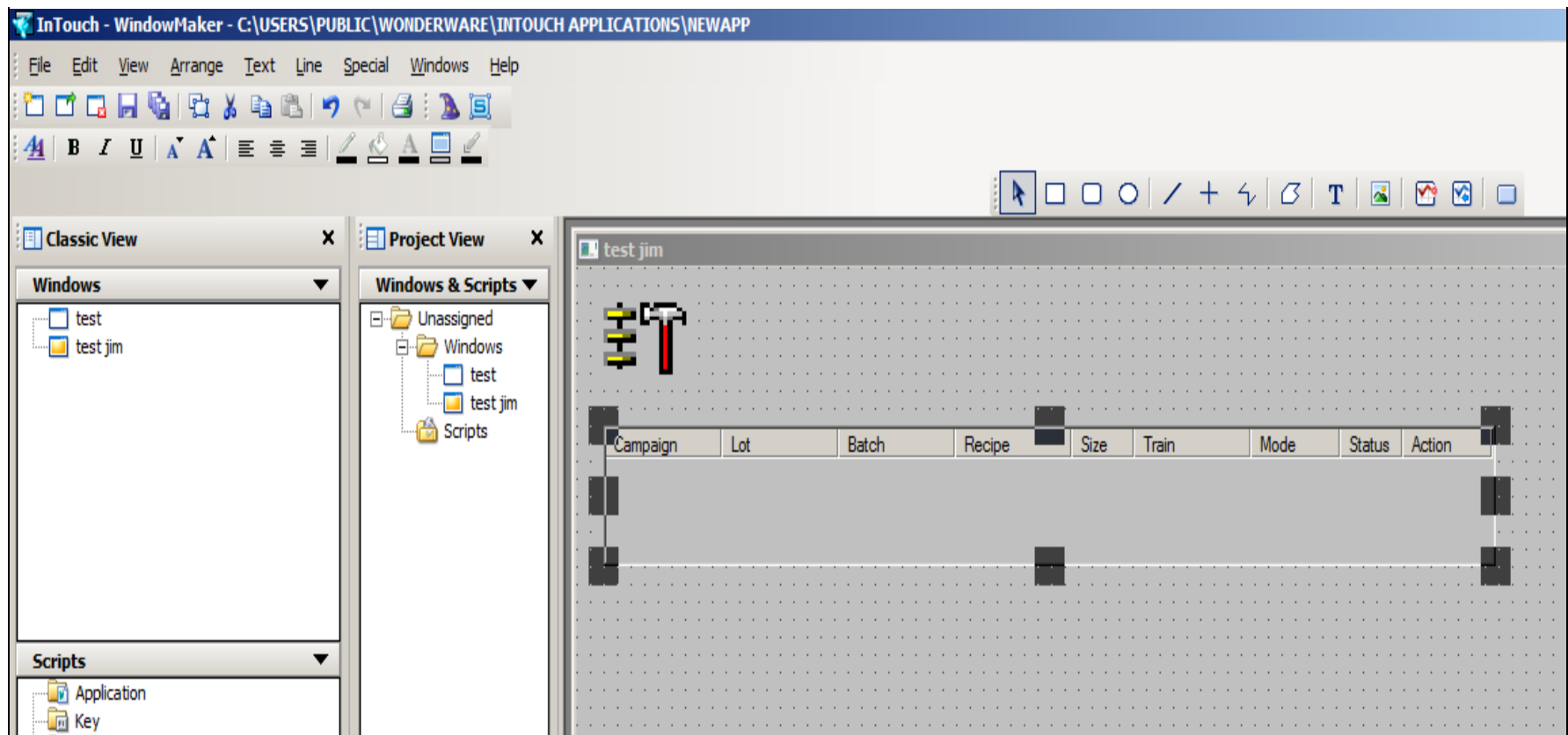


FIGURE 4: BATCH LIST CONTROL

2. Next we need to add **BatchField** controls. These will be used for the security clearance.

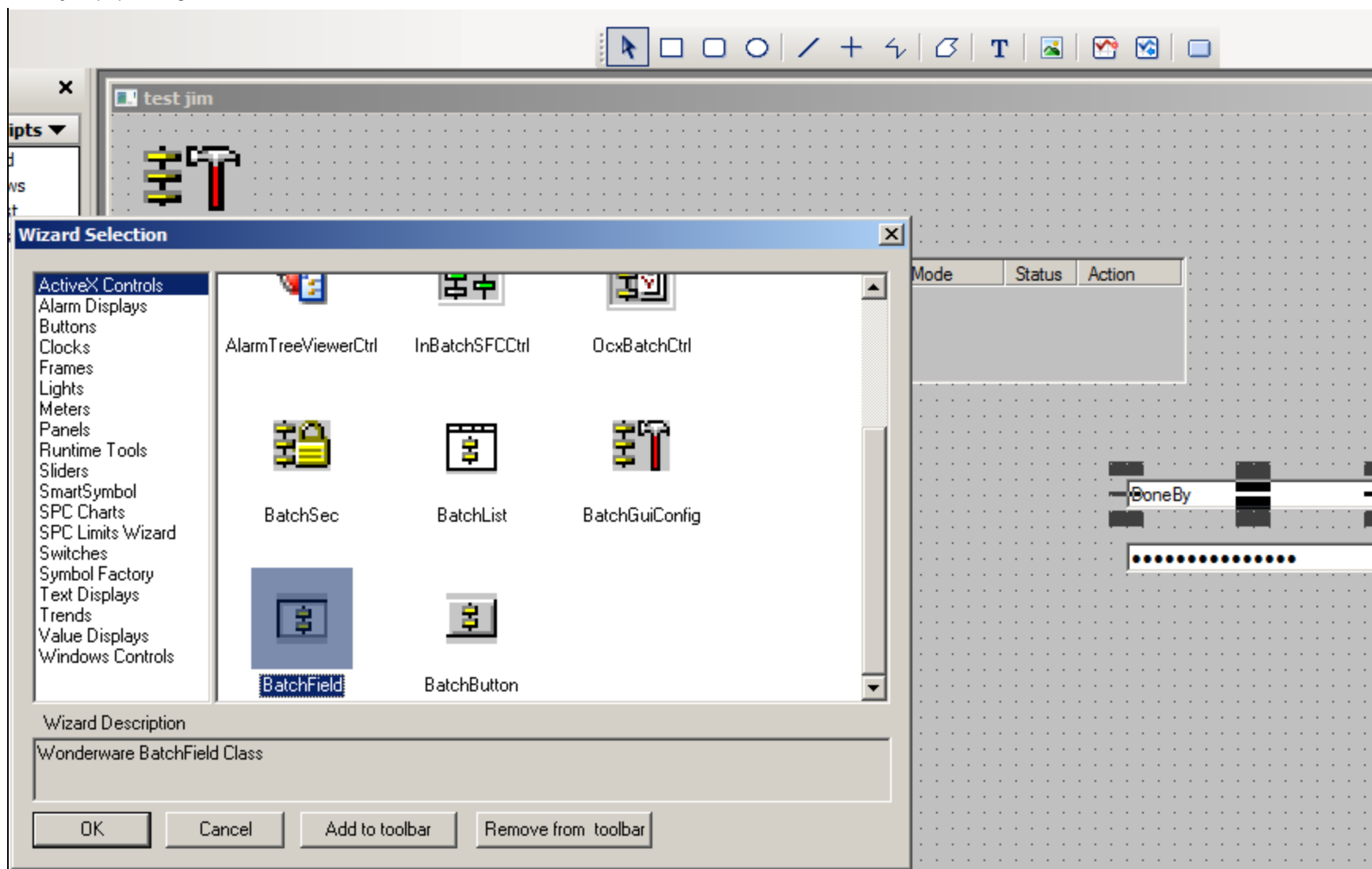


FIGURE 5: ADD BATCHFIELD BUTTON

3. Select the **Done By** and **Done by Password** controls.

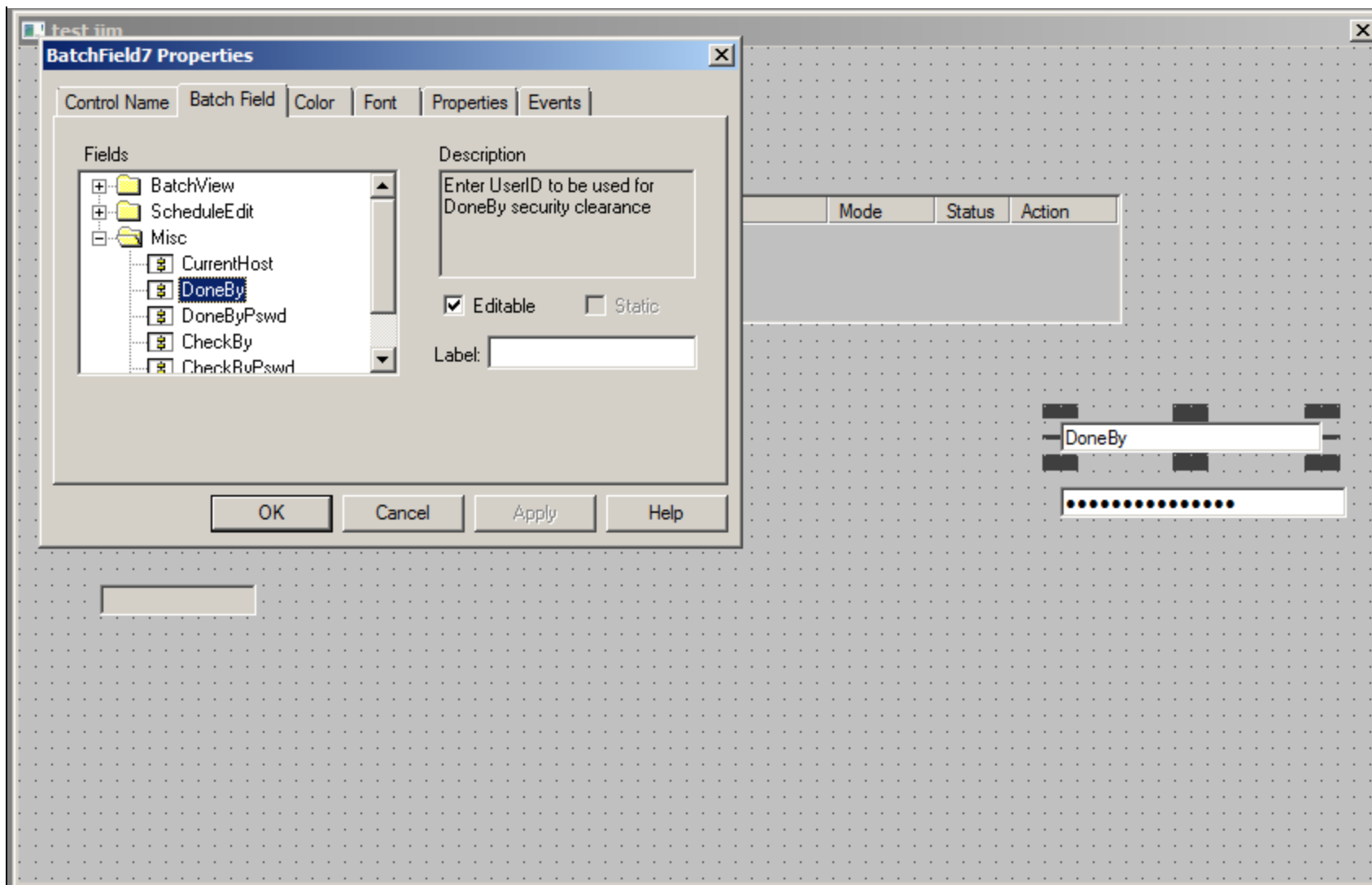


FIGURE 6: DONE BY AND DONE BY PASSWORD CONTROLS

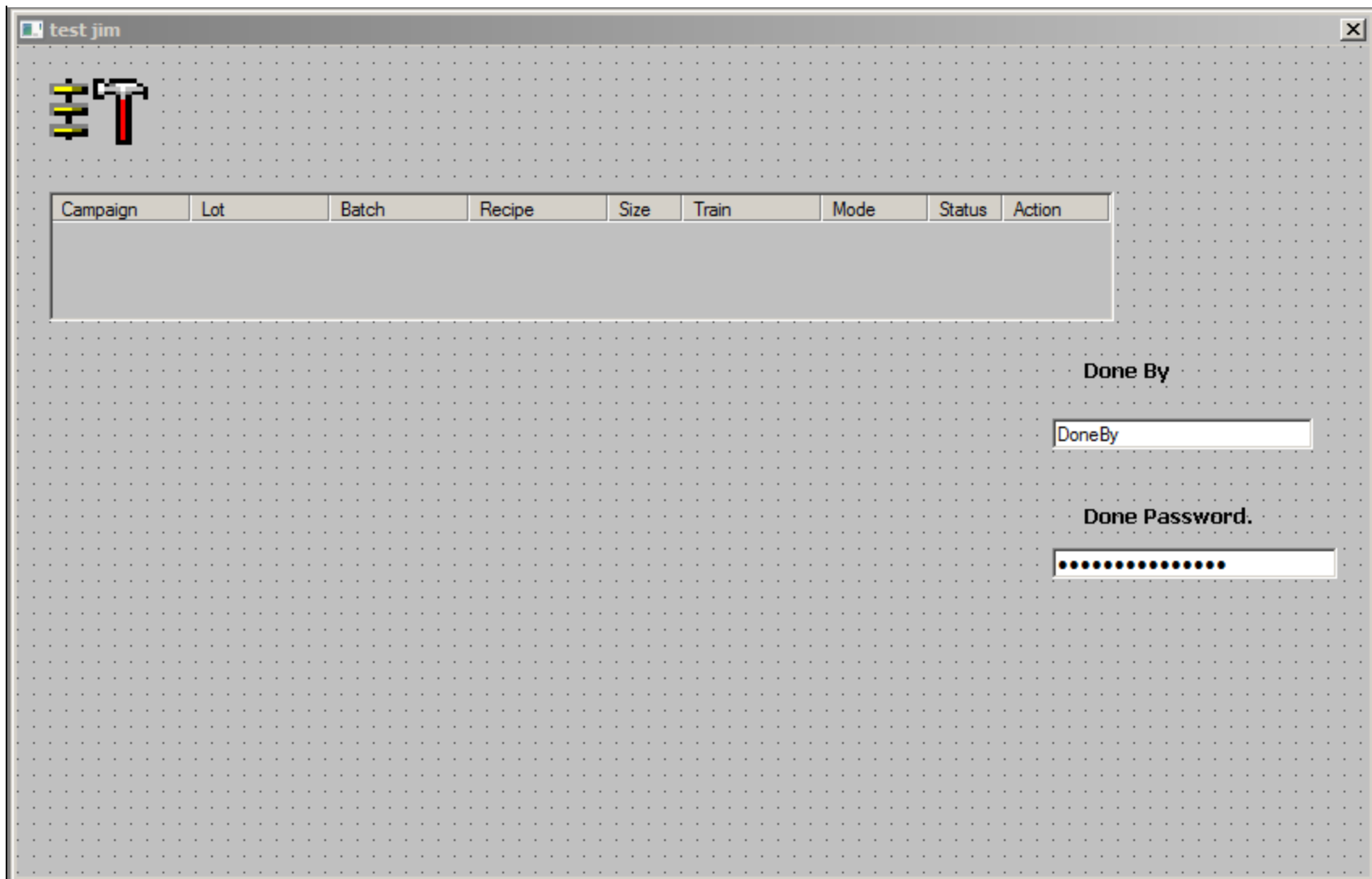


FIGURE 7: DONE BY AND DONE BY PASSWORD CONTROLS

4. In the Batch Field control, link the **ValueText** property to an associated Tag (Figure 8 below).

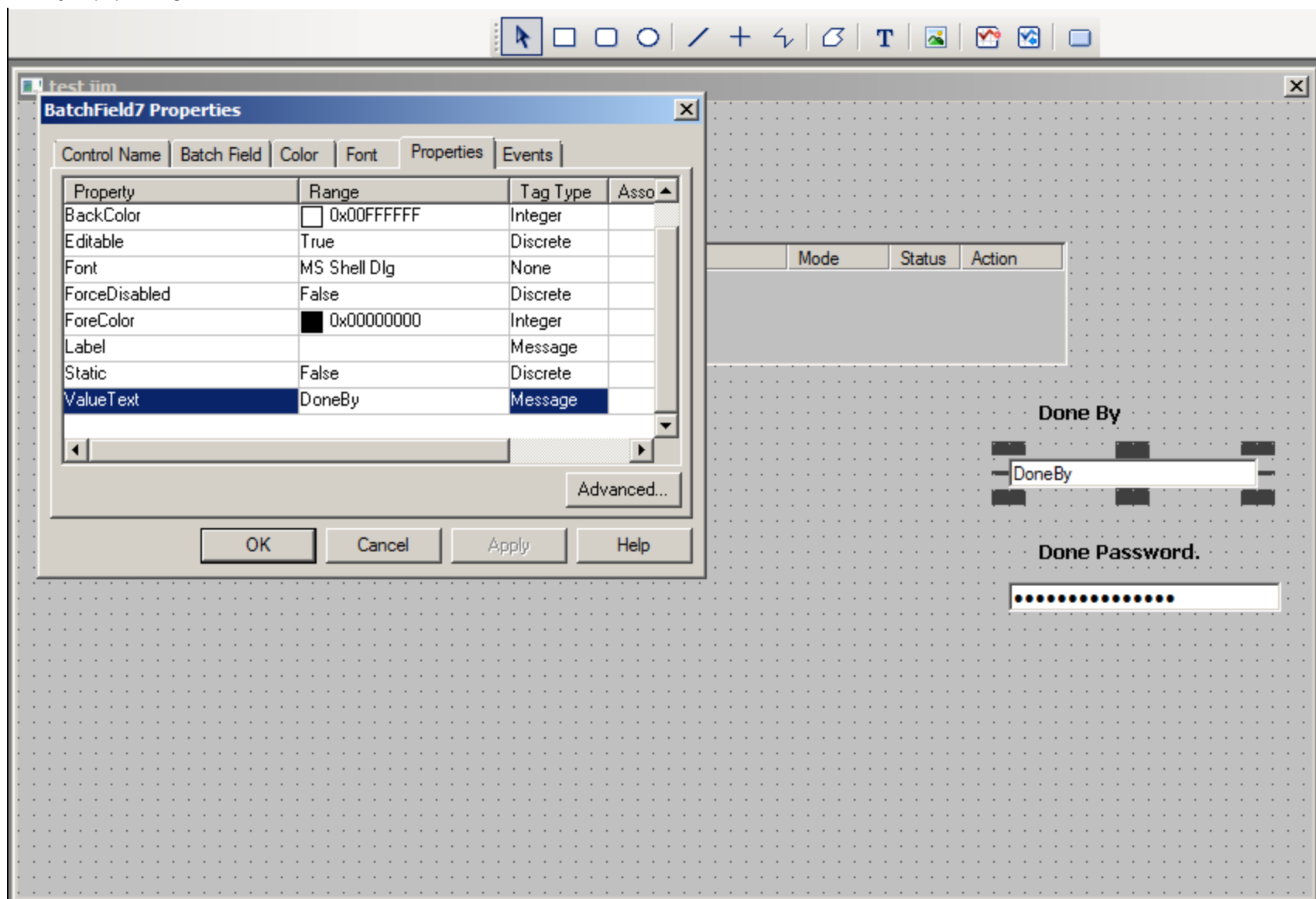


FIGURE 8: LINK **DONE BY** TO A MESSAGE TAG

- In this example we are going to set these with a push button called **Set Done by and Done By Password**. The button fires an action script where we set both the **Done By** and **Done Password** values to system\system (Figures 9-10 below).

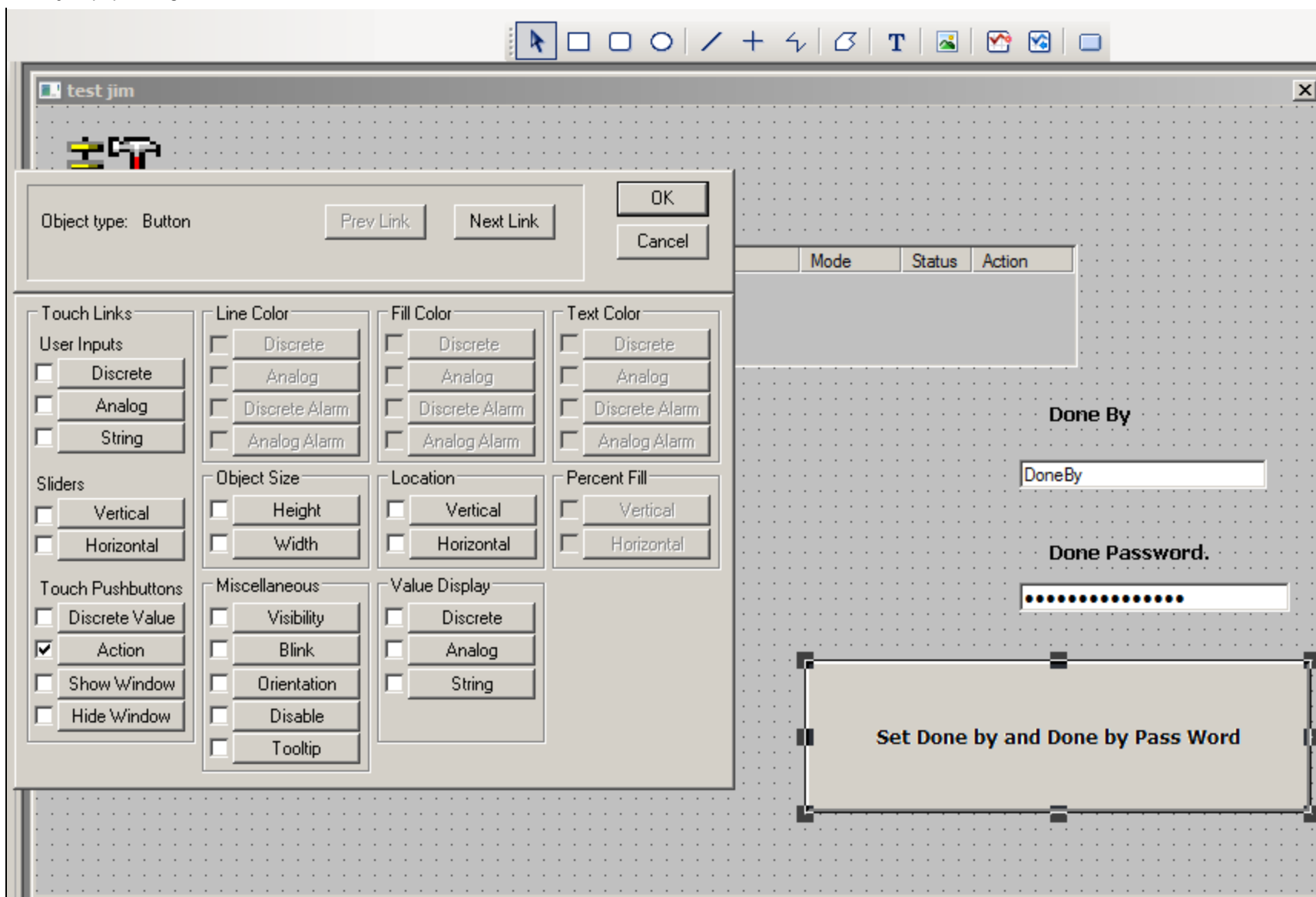


FIGURE 9: LINK TO ACTION SCRIPT

6. Provide the action script to set both of the above to **system/system** security.

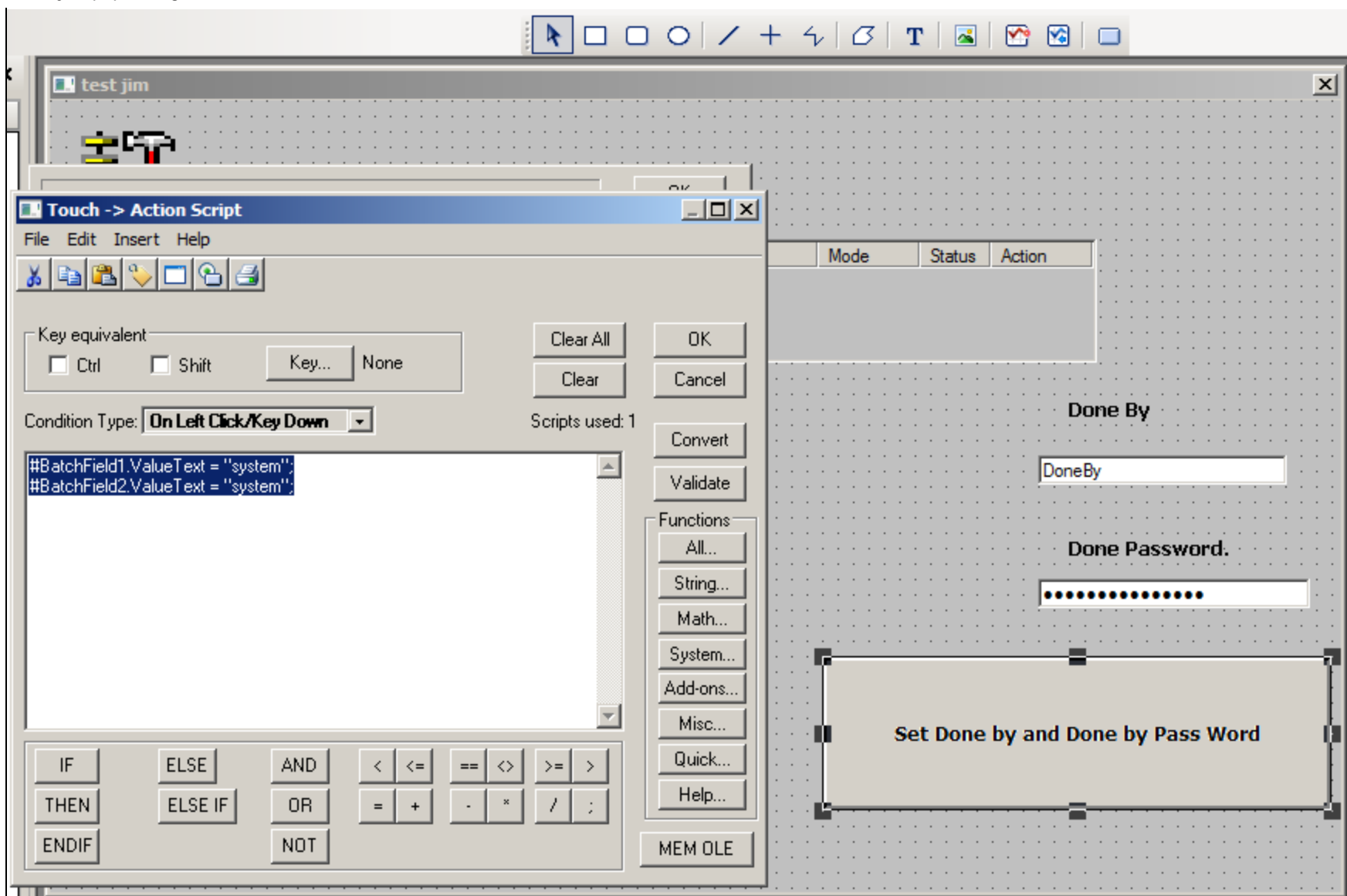


FIGURE 10: ACTION SCRIPT FOR "SYSTEM" "SYSTEM"

- Now we need to assign the Batch start button with InBatch security enabled on it.

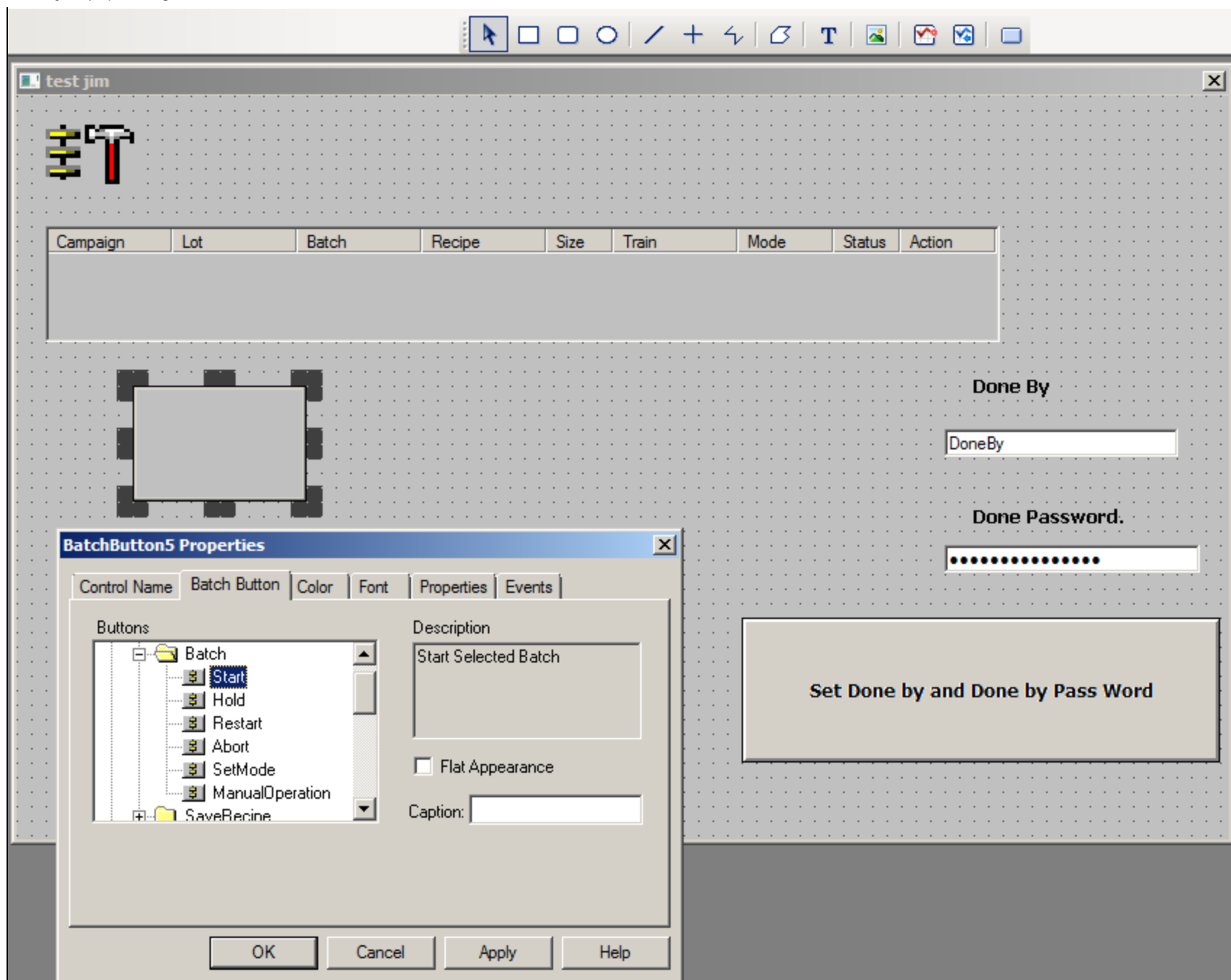
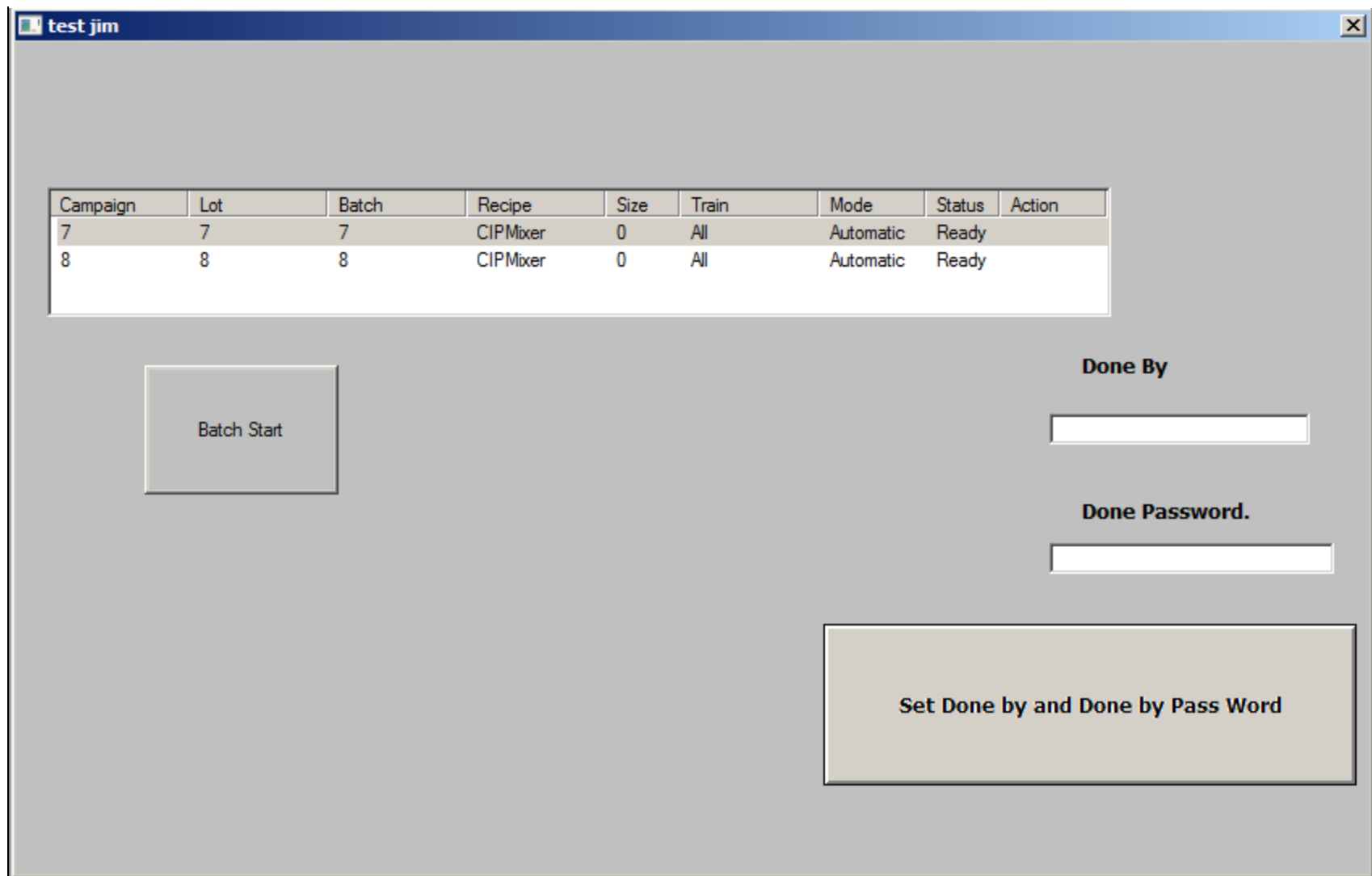


FIGURE 11: ASSIGN SECURITY TO START SELECTED BATCH BUTTON

8. Start the IB runtime services and schedule a few batches. You will see the Batches are ready to start.



The screenshot shows a window titled "test jim" with a table of batch data and several control elements. The table has columns for Campaign, Lot, Batch, Recipe, Size, Train, Mode, Status, and Action. Below the table are a "Batch Start" button, a "Done By" label with an input field, a "Done Password." label with an input field, and a large "Set Done by and Done by Pass Word" button.

Campaign	Lot	Batch	Recipe	Size	Train	Mode	Status	Action
7	7	7	CIPMixer	0	All	Automatic	Ready	
8	8	8	CIPMixer	0	All	Automatic	Ready	

Batch Start

Done By

Done Password.

Set Done by and Done by Pass Word

FIGURE 12: RUNTIME BATCH SCHEDULE

9. Set the Batch Field Value test for **Done By** and **Done By Password** by pressing the **Set Done By and Done By Password** button.

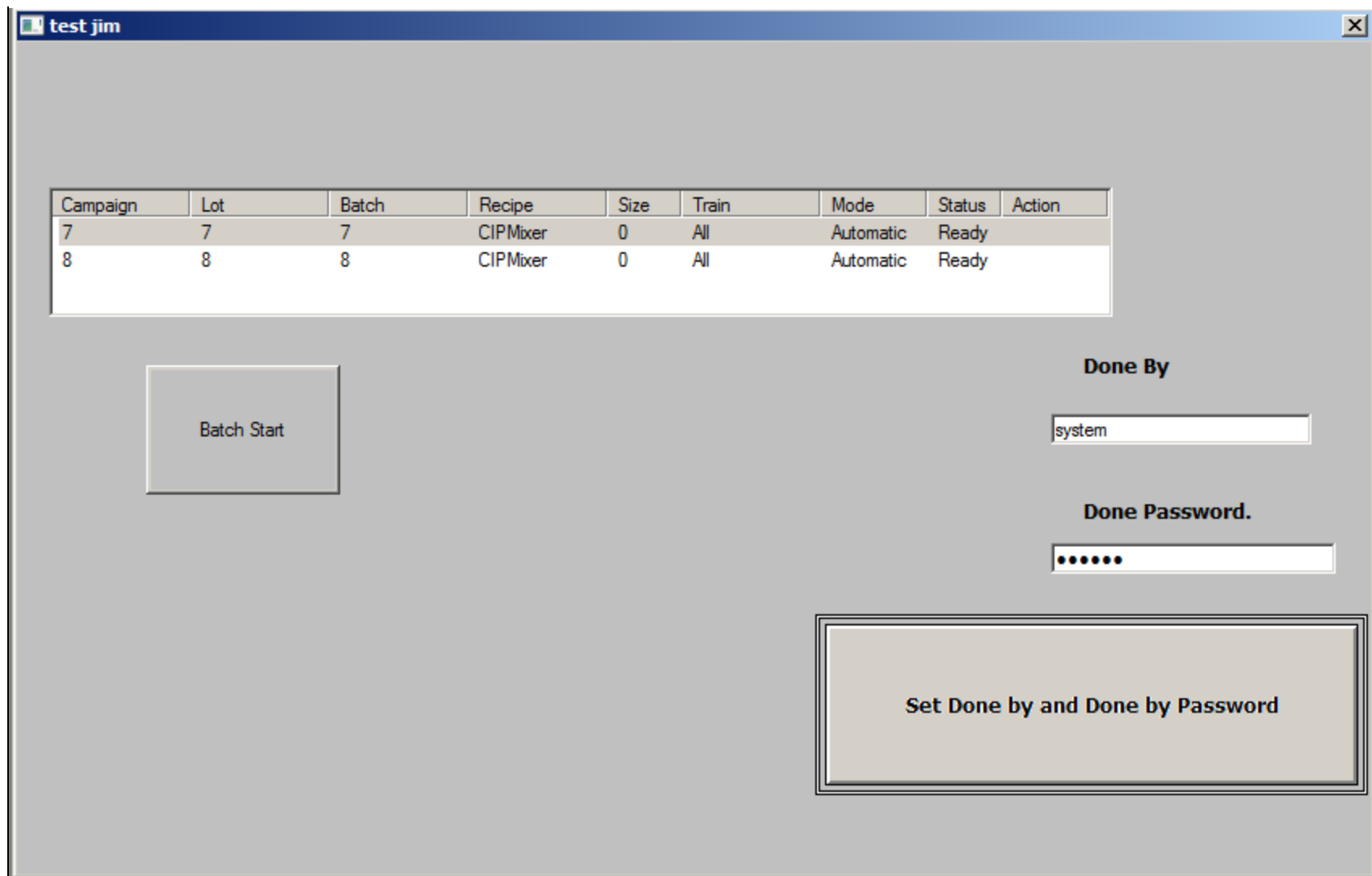


FIGURE 13: PROVIDE SECURITY FOR BATCH START

10. Click **Batch start**. The batch starts without displaying the Security dialog box.

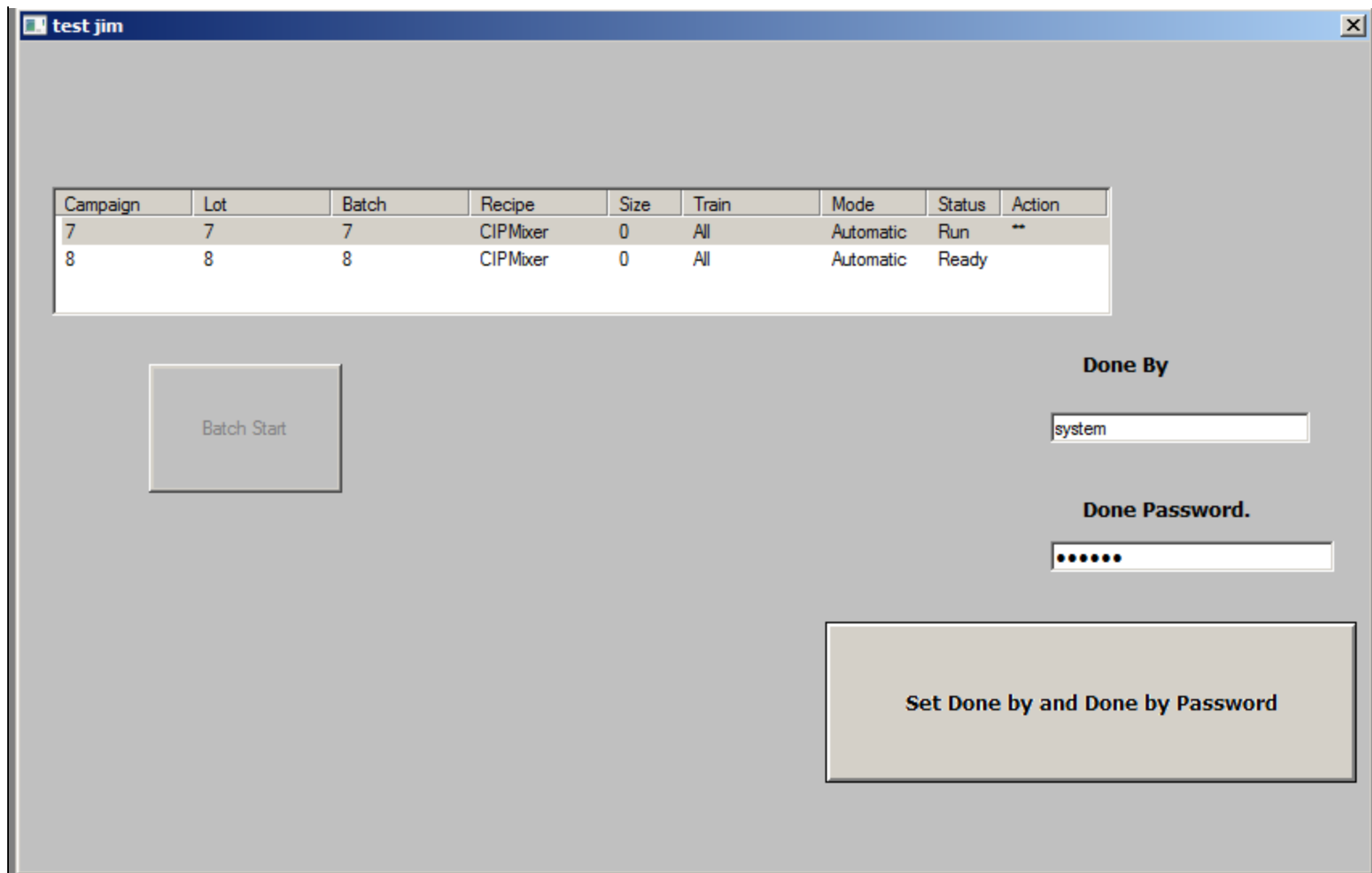


FIGURE 14: SECURITY IS ENABLED FOR BATCH START

J. Godfrey

Tech Notes are published occasionally by Wonderware Technical Support. Publisher: Invensys Systems, Inc., 26561 Rancho Parkway South, Lake Forest, CA 92630. There is also technical information on our software products at [Wonderware Technical Support](#).

For technical support questions, send an e-mail to wwsupport@invensys.com.

 [Back to top](#)

©2014 Invensys Systems, Inc. All rights reserved. No part of the material protected by this copyright may be reproduced or utilized in any form or by any means, electronic or mechanical, including photocopying, recording, broadcasting, or by any information storage and retrieval system, without permission in writing from Invensys Systems, Inc.

[Terms of Use](#).

