

## [Tech Note 1028](#) aaPkgAnalyzer Utility

---

All Tech Notes, Tech Alerts and KBCD documents and software are provided "as is" without warranty of any kind. See the [Terms of Use](#) for more information.

Topic#: t002864

Created: April 2014

### Introduction

Use the aaPkgAnalyzer Utility to preview the content of an exported ArcestraA object against a specific Galaxy.

aaPkgAnalyzer allows you to make a preliminary impact assessment on the objects in the Galaxy that will be affected by the specific import.

The following is a list of available features:

- Execute the utility from the GR Node using the ArcestraA Network account.
- **aaPkgValidator.exe.config**: Changes default values for source and destination GR node and Galaxy.
- aaPkg Analyzer dialog is CTRL+C supported.

### Application Versions

- Windows 2008 Server R2
- Windows 2008 Server R2 P01
- Wonderware System Platform 2012
- Wonderware System Platform 2012 P01
- Wonderware System Platform 2012 R2

### Using the aaPKGAnalyzer Utility

1. Download aaPKGSetup.zip and extract it to your local hard drive.
2. Run the aaPKGAnalyzer utility:

The screenshot shows the AAPKG Analyzer v.2.0 application window. The window title is "AAPKG Analyzer v.2.0". The menu bar includes "Files", "Result", and "Report". A help message "Press F1 for online help" is in the top right corner. The interface is divided into two main sections: "Source" and "Destination".

**Source Section:**

- Use aapkg
- File path: C:\U D S\aaPKGValidator\_Mirko\Source\aapkgValidator\TestObjects\UD04.aaPKG
- Use Galaxy
- GR node name: CCP1PGXY.CCP1.GENE.COM
- Galaxy name: CCP1DCS
- Authentication: SQL Server Authentication
- User name: GXYReadOnly
- Password: [masked]

**Destination Section:**

- Use aapkg
- File path: [empty]
- Use Galaxy
- GR node name: CCP1PGXY.CCP1.GENE.COM
- Galaxy name: CCP1DCS
- Authentication: SQL Server Authentication
- User name: GXYReadOnly
- Password: [masked]

Buttons at the bottom right: "Save Configuration" and "Analyze".

**FIGURE 1: AAPKGANALYZER UI**

3. In the **Source** area, click the Use aapkg option, then use the Browse (ellipsis) button to select the aaPKG file you exported from the Galaxy. The source of the aaPKG file could be from the same Galaxy but updated version of objects or it could be from a completely different Galaxy.
4. In the **Destination** area, click the Use Galaxy option.

**Note:** You can also compare aaPKG vs. aaPKG or Galaxy vs. Galaxy.

5. Provide the GR node name and the Galaxy name.

6. For **Authentication**, provide the User name and Password for SQL Server. This is necessary to get information about the existing objects in this Galaxy.
7. Click **Save Configuration** to save the Galaxy and SQL Server Authentication information in a config file. The config file populates the Galaxy and SQL Server Authentication automatically when you run the utility.
8. Click the **Analyze** button. This will analyze the differences between the Source and Destination objects. The results of analysis are provided in the following Summary Window:

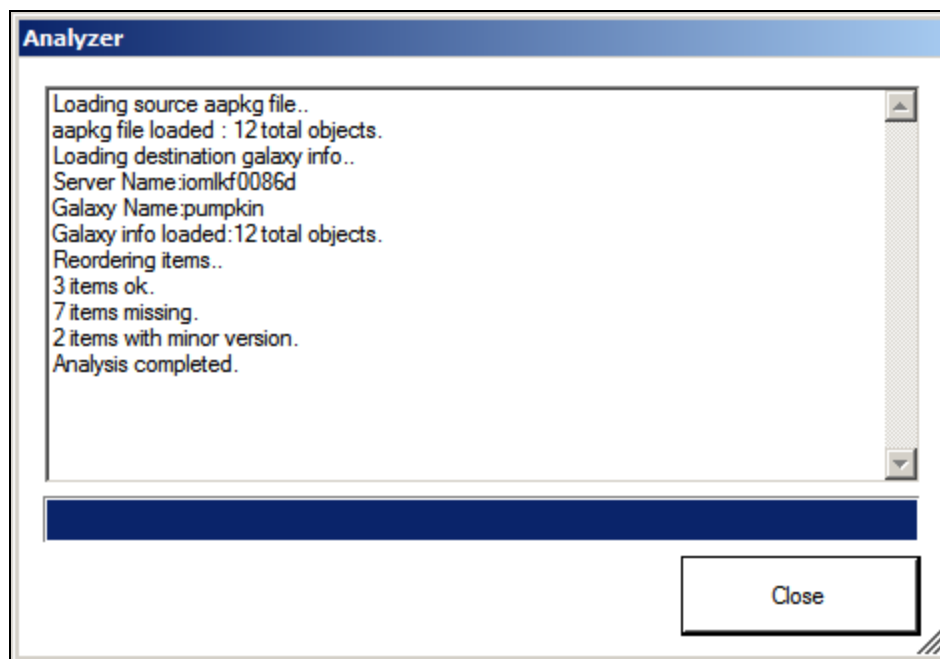


FIGURE 2: AAPKGANALYZER SUMMARY WINDOW

9. Click **Close** and then click the **Result** tab to see the detailed results.

	TagName	Source Config Version	Destination Config Version	Source CodeBase	Destination CodeBase	Status
1	\$UserDefined	11		ArchestrA.UserDefined.3		Missing
2	\$UD01	3		ArchestrA.UserDefined.3		Missing
3	\$UD02	2		ArchestrA.UserDefined.3		Missing
4	UD02_001	1		ArchestrA.UserDefined.3		Missing
5	UD01_003	3		ArchestrA.UserDefined.3		Missing
6	UD01_002	3		ArchestrA.UserDefined.3		Missing
7	UD01_001	3		ArchestrA.UserDefined.3		Missing
8	\$ClientControl	4	24	ArchestrA.ClientControl.1	ArchestrA.ClientControl.1	Minor
9	\$Symbol	6	26	ArchestrA.Symbol.1	ArchestrA.Symbol.1	Minor
10	AlarmClient	1	1	ArchestrA.ClientControl.1	ArchestrA.ClientControl.1	Ok
11	ClockAnalogWall	21	21	ArchestrA.Symbol.1	ArchestrA.Symbol.1	Ok
12	ButtonArrowsHorz	8	8	ArchestrA.Symbol.1	ArchestrA.Symbol.1	Ok

FIGURE 3: AAPKGANALYZER DETAILED RESULTS TAB

## Summary

Note that Analysis is shown for all Symbols, Client Controls, Templates and Instances. All checkboxes are selected by default: – **Symbols, Client Controls, Templates, Instances** and the list box **Show All** is selected.

This provides data that you can use to make the key decision as to whether the source aaPKG file or Galaxy should be imported into the destination galaxy or not.

For example, after importing an "undesired" Source aaPKG file into a destination Galaxy in ArchestrA IDE, there is no way to revert back

the changes that took place as a result of importing. This is where this utility comes in handy, where it presents at a glance the differences between the Source and Destination Objects (Templates, Instances, Symbols and Client Controls).

This information helps you to make an informed decision whether the source aaPKG file should be imported or not.

## Detailed Description

The following information describes the information in the **Result** tab panel.

- The **Tagname column** shows the names of Templates, Instances, Client Controls and Symbols contained in the "Source" aaPKG or selected Galaxy. These are compared against the Tagnames existing in the destination aaPKG or Galaxy.
- The **Source Config Version** column shows the ConfigVersion Attribute value for the Tagname in a given row.
- The **Destination Config Version** column shows the ConfigVersion Attribute value for the Tagname in a given row.
- The **Source CodeBase** column shows the CodeBase Attribute value for the Tagname in a given row.
- The **Destination CodeBase** column shows the CodeBase Attribute value for the Tagname in a given row.
- The **Status** column shows status values such as:
  - Source Version Higher than Destination version: **Red**
  - Source Version Minor than Destination version: **Yellow**
  - Source Version equal to Destination version: **White**
  - Source Object missing in Destination: **Aqua**

The Filter group box helps to filter the Tagnames presented in Tagname column in 3 ways:

- By Templates, Instances, Client Controls and Symbols by selecting the appropriate check box.
- Tagnames can also be filtered using "Show All" and "Show Differences" combo box.
- By typing in the partial tagname in the "TagName" textbox.

You can use the **Report** tab to Print or Export to html file:

**AAPKG Analyzer v.2.0**

Files | Result | Report Press F1 for online help

Print | Export

Source aapkg file Name:C:\U D S\aaPKGValidator\_Mirko\Source\aapkgValidator\TestObjects\UD04.aaPKG  
 Destination Server Name:iomlrf0086d Galaxy Name:pumpkin

#	Tag Name	Source codebase	Dest codebase	Source Version	Dest Version	State
1	\$UserDefined	ArchestrA.UserDefined.3		11		Missing
2	\$UD01	ArchestrA.UserDefined.3		3		Missing
3	\$UD02	ArchestrA.UserDefined.3		2		Missing
4	UD02_001	ArchestrA.UserDefined.3		1		Missing
5	UD01_003	ArchestrA.UserDefined.3		3		Missing
6	UD01_002	ArchestrA.UserDefined.3		3		Missing
7	UD01_001	ArchestrA.UserDefined.3		3		Missing
8	\$ClientControl	ArchestrA.ClientControl.1	ArchestrA.ClientControl.1	4	24	Minor
9	\$Symbol	ArchestrA.Symbol.1	ArchestrA.Symbol.1	6	26	Minor
10	AlarmClient	ArchestrA.ClientControl.1	ArchestrA.ClientControl.1	1	1	Ok
11	ClockAnalogWall	ArchestrA.Symbol.1	ArchestrA.Symbol.1	21	21	Ok
12	ButtonArrowsHorz	ArchestrA.Symbol.1	ArchestrA.Symbol.1	8	8	Ok

#### REPORT AND EXPORT OPTIONS

- Click the Print and Export button to export to Html file.

P. Kulkarni

*Tech Notes* are published occasionally by Wonderware Technical Support. Publisher: Invensys Systems, Inc., 26561 Rancho Parkway South, Lake Forest, CA 92630. There is also technical information on our software products at [Wonderware Technical Support](#).

For technical support questions, send an e-mail to [wwwsupport@invensys.com](mailto:wwwsupport@invensys.com).

 [Back to top](#)

©2014 Invensys Systems, Inc. All rights reserved. No part of the material protected by this copyright may be reproduced or utilized in any form or by any means, electronic or mechanical, including photocopying, recording, broadcasting, or by any information storage and retrieval system, without permission in writing from Invensys Systems, Inc.

[Terms of Use.](#)