

Tech Note 1034

XY Plotter ActiveX Control Demo Application

All Tech Notes, Tech Alerts and KBCD documents and software are provided "as is" without warranty of any kind. See the [Terms of Use](#) for more information.

Topic#: 002872

Created: July 1999

Updated: May 2014

Introduction

The **XY Plotter** ActiveX control allows you to plot graphs in your InTouch (version 7.0 or later) application (Figure 1 below):

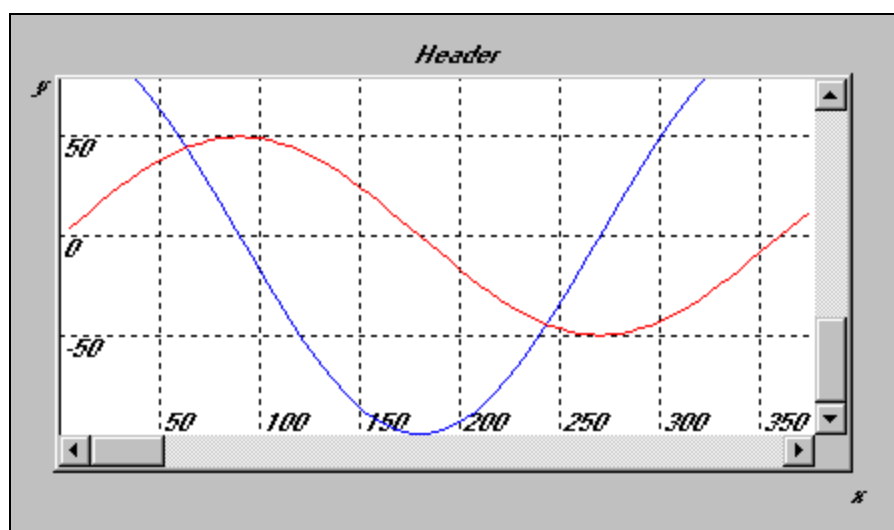


FIGURE 1: GRAPHS FOR INTOUCH

The control handles up to ten different colored pens and each graph can plot as many as 10,000 points. Each graph is completely configurable, including X and Y offsets, the graph's height and length (including maximum height and length) and titles for the graph and specific XY coordinate locations.

Complete documentation on using the XY Plotter ActiveX control is provided in the online help file, help.doc, which is available after you download and unzip the Control.

The XY Plotter ActiveX control also comes with an InTouch application that demonstrates the use of the control.

Installing the XY Plotter ActiveX Control

Complete the following steps to install the XY Plotter ActiveX Control:

1. Download the [Plotter.zip](#) file
2. Unzip the files **Plotter.ocx**, **help.doc** and **Plotter.cfg** into a selected directory.
3. Register the ActiveX control by selecting **Run** from the Windows Start menu and type

```
regsvr32.exe c:\<directory location>\plotter.ocx
```

Where **C:\<directory location>** is where the **Plotter.ocx** file resides.

You can also open it with **regsvr32.exe** (Figure 2 below):

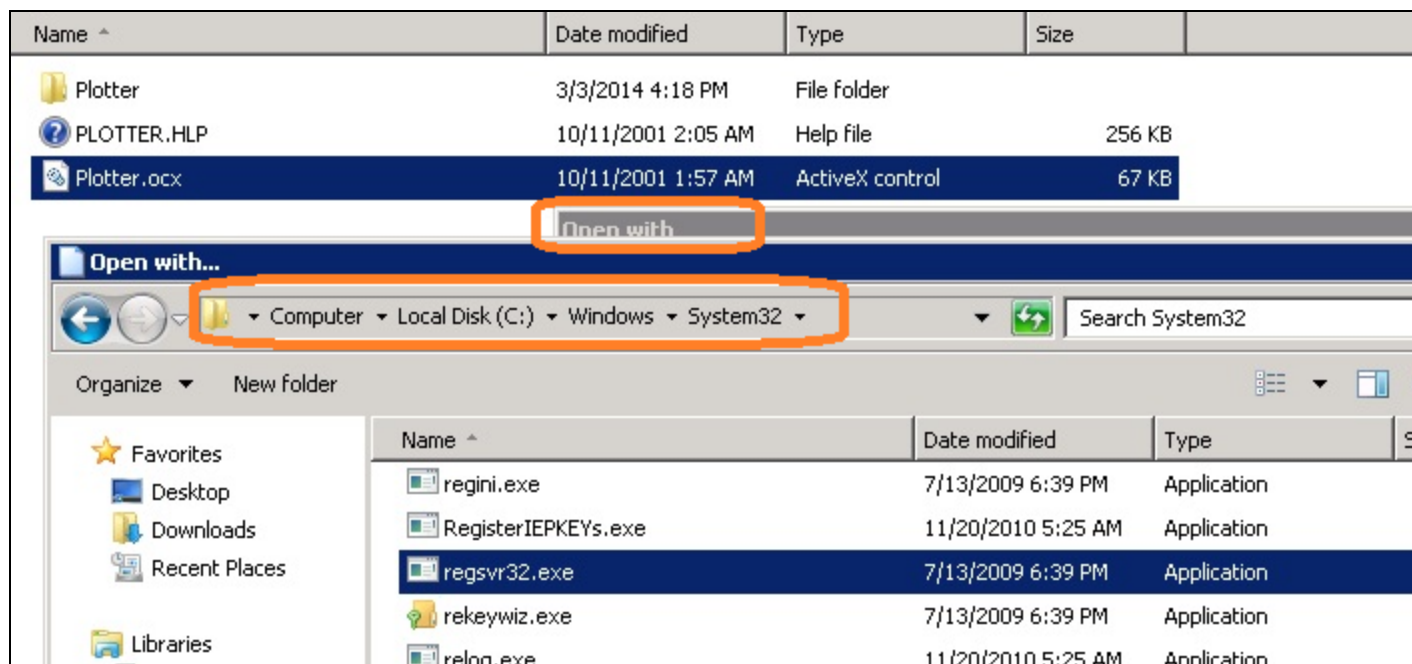


FIGURE 2: OPEN THE PLOTTER FILE

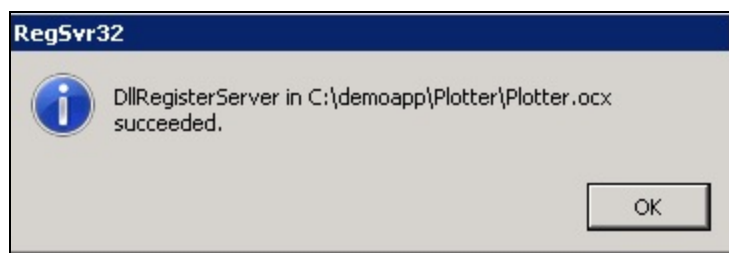


FIGURE 3: REGISTERSERVER SUCCEEDED

4. Download the InTouch Demo application [IT7.0_Appl.zip](#) file for InTouch 7.x (and later) versions **OR** the [2014_XY_Plot_app.zip](#) for InTouch 11.0 (and later) versions.

- Unzip the contents of the **IT7.0_Appl.zip** or the **2014_XY_Plot_app.zip** file into a specified directory, and then start the application in Window Maker.
- Start up Window Maker with the selected Demo application downloaded in Step 4 and install the ActiveX control by clicking **Special/Configure/Wizard/ActiveX Installation**.

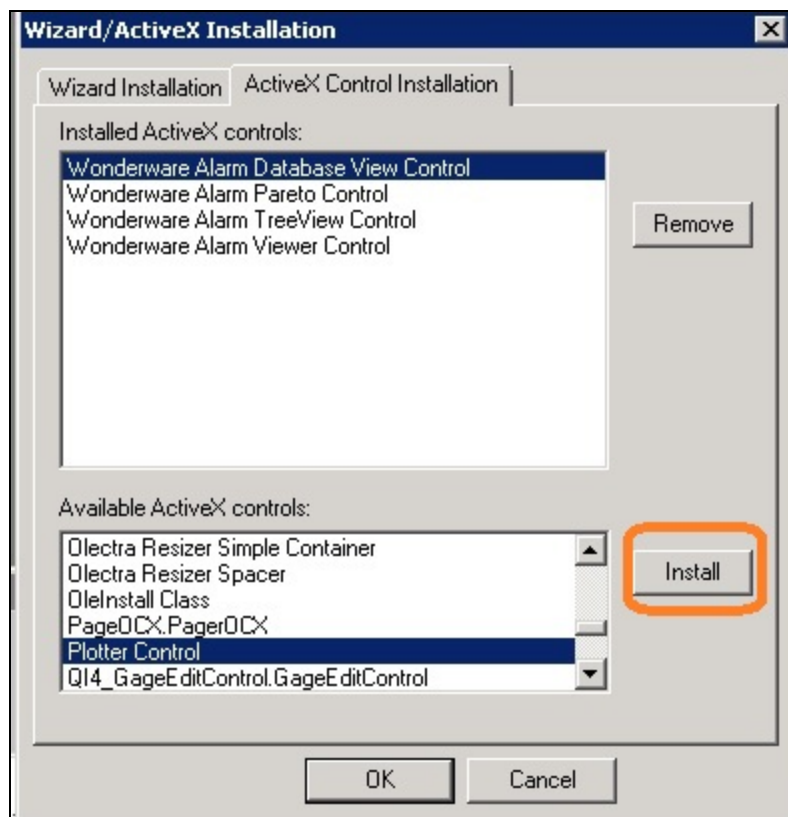


FIGURE 4: PLOTTER CONTROL ACTIVEX INSTALLATION

- Double-click the control to configure it using the **Properties** dialog box.
- Select the **Pen Settings** tab and click **Load File** to load the **Plotter.cfg** configuration file. The file is in the InTouch application directory.

Alternate Steps

- Copy **Plotter.cfg** to the root of the **C:** drive. **C:\Plotter.cfg** is where the demo application looks for that configuration file by default.

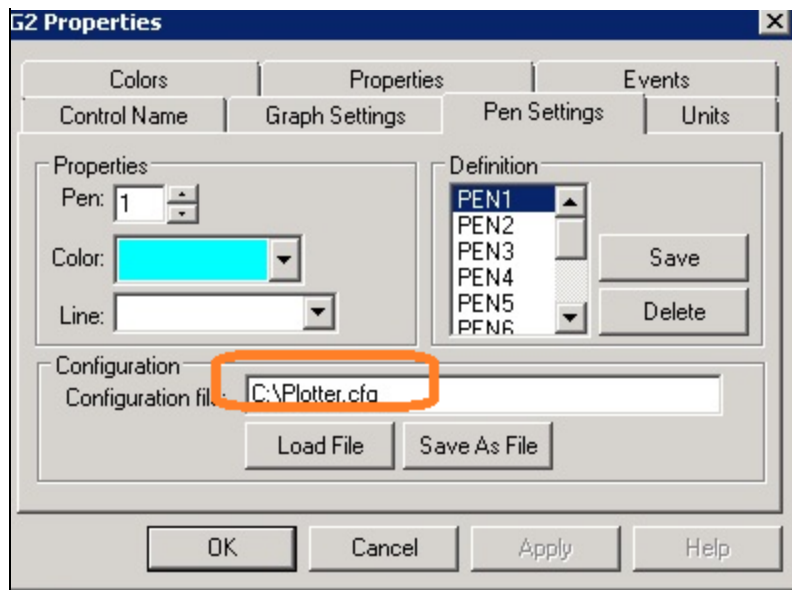


FIGURE 5: PLOTTER.CFG FILE LOAD

Refer to the **help.doc** file for detailed information on configuring the properties.

Running the InTouch Demonstration Application

1. Start the application in Window Maker.
2. Run **View** for your selected application.
 - The **AutoScrollDemo** window generates some number and Plot the SIN (x1) and COS (x2) functions and you can enable- or disable the Auto Scroll feature of the plotter by setting the property in the Script:
 - #G2.AutoScroll=1;
 - #G2.AutoScroll=0;

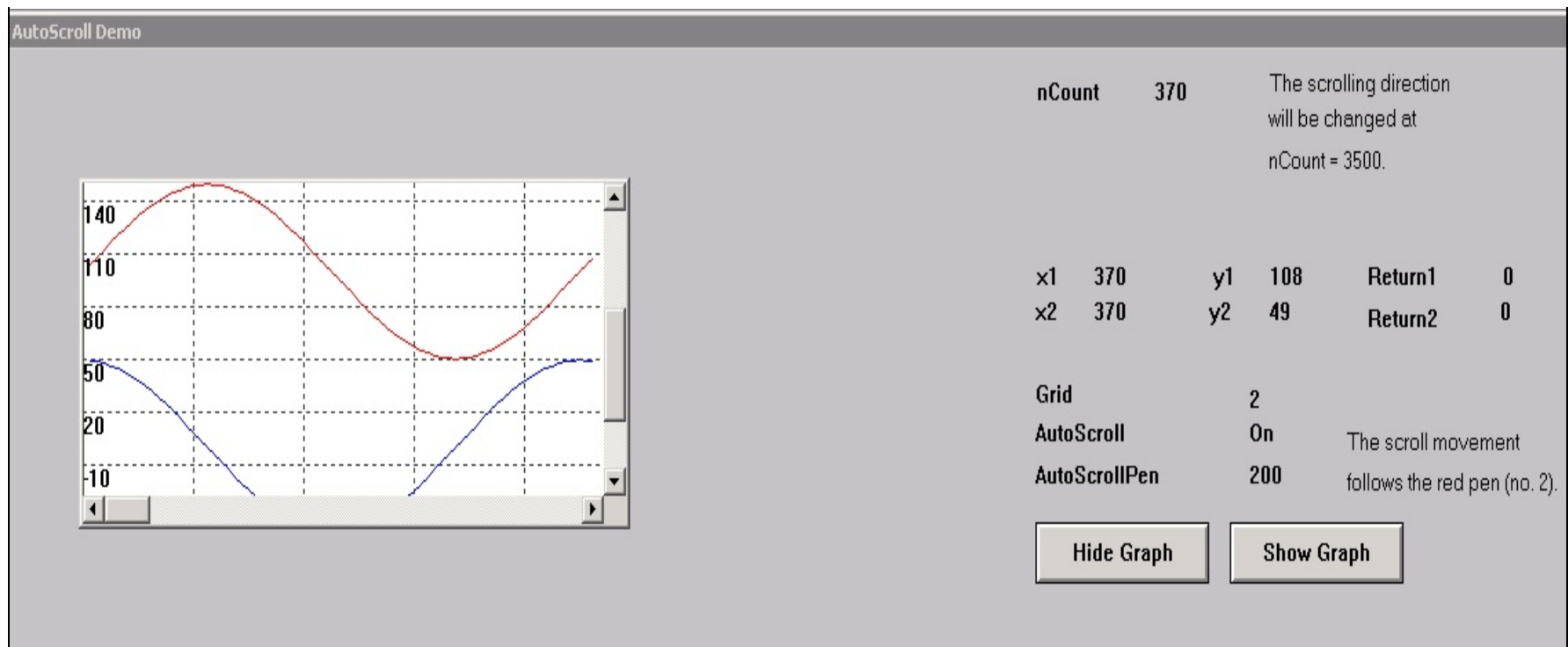


FIGURE 6: AUTO_SCROLL_DEMO WINDOW

- The **Plot Demo** window plots the Wonderware logo with the Pen Selected and a predefined series of points.
 - #G1.Plot(116,-22,P,1);
 - #G1.Plot(26,-67,P,1);

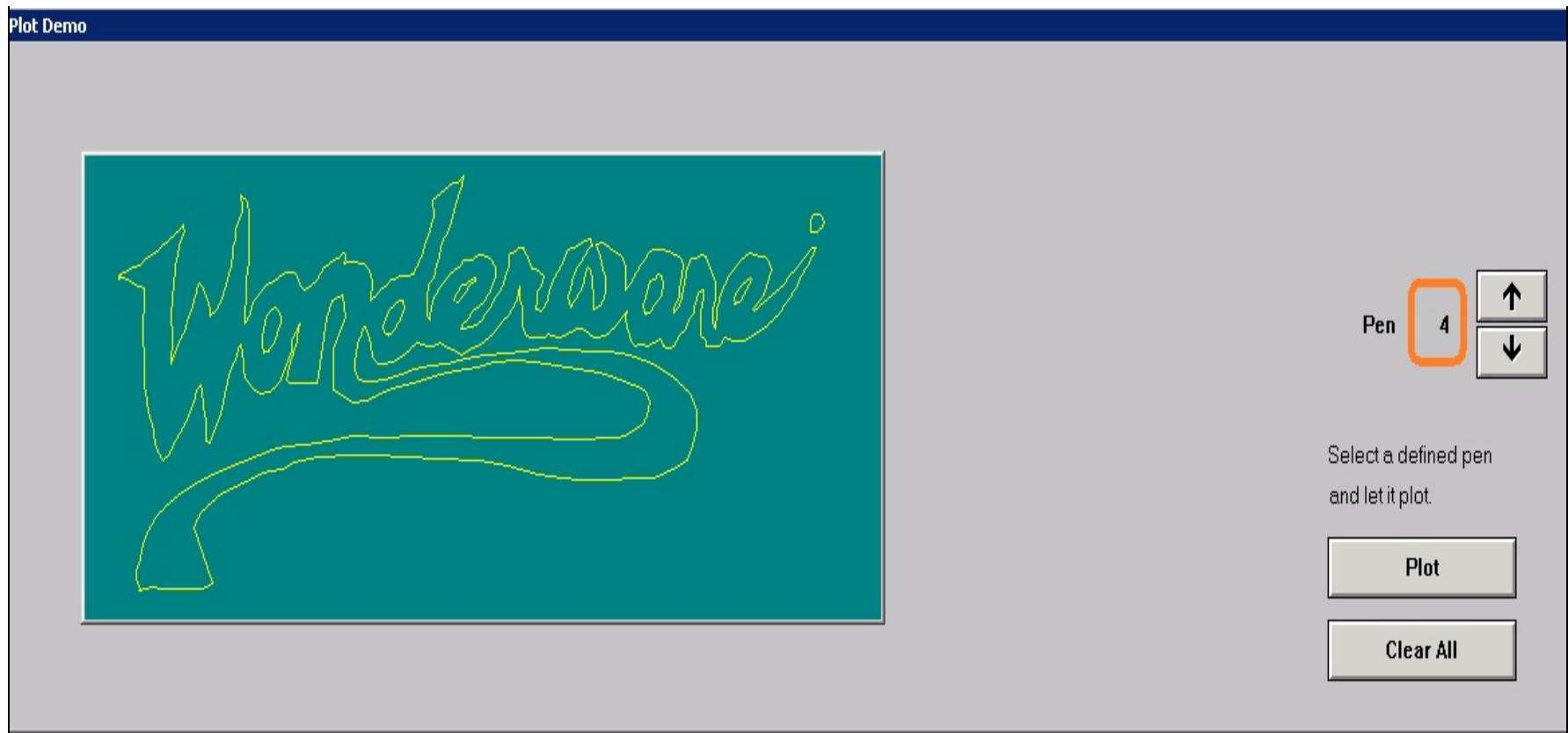


FIGURE 7: PLOT DEMO WINDOW

- The **Unit Definition Demo** window plots a predefined number with two different set of Pens.

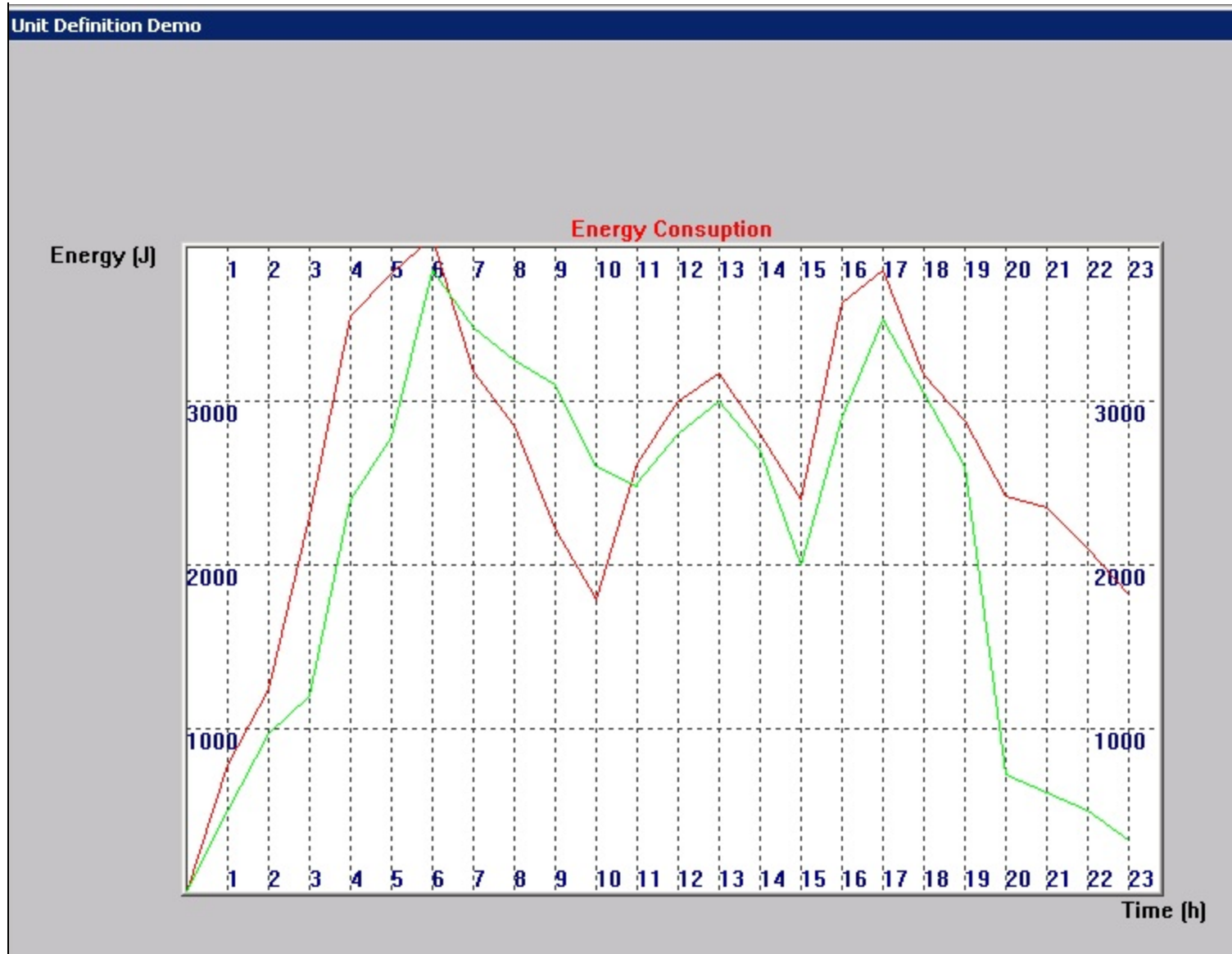


FIGURE 8: UNIT DEFINITION DEMO WINDOW

- The application includes Windows to plot a simple X-Y coordinate series using a Slider control.

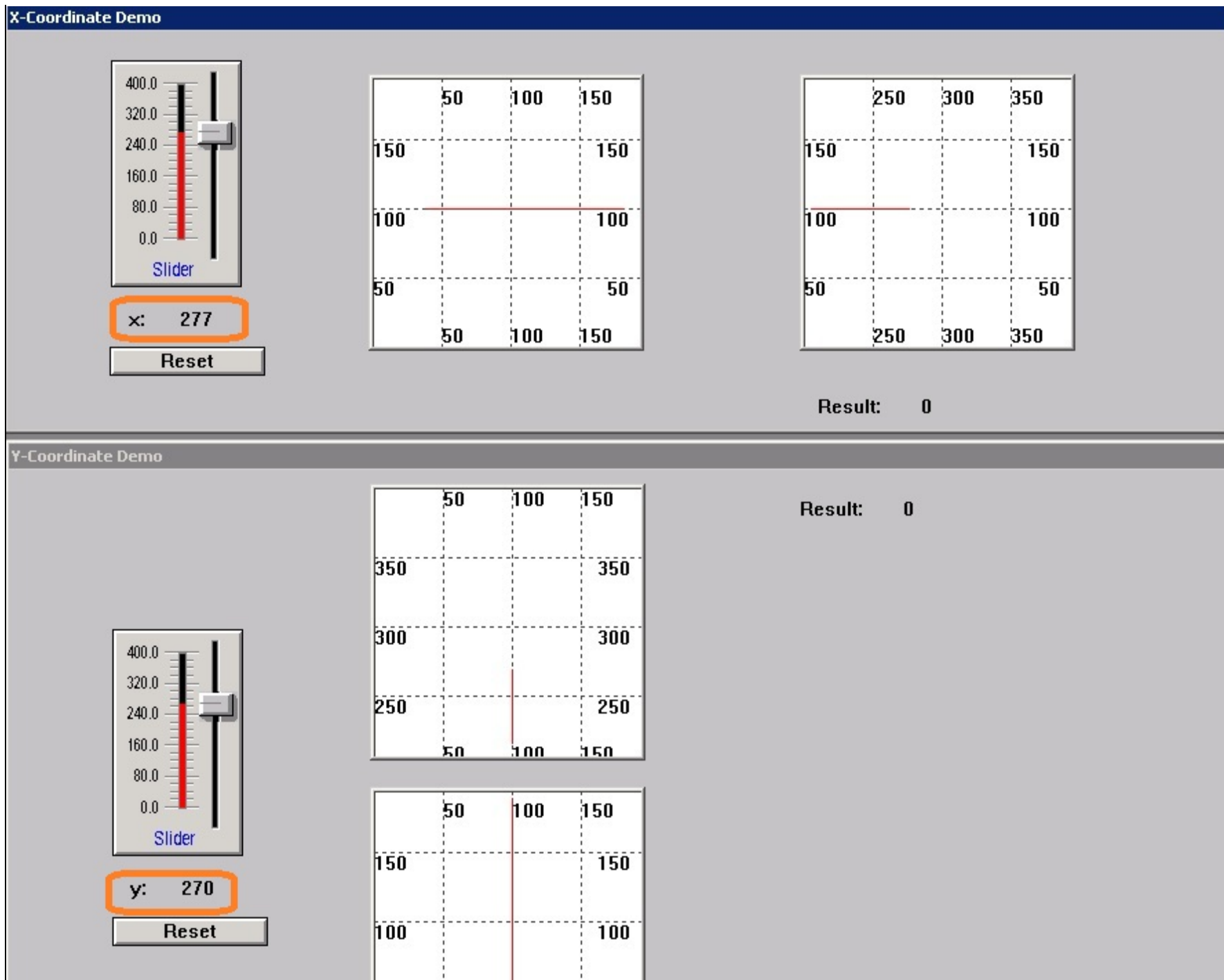


FIGURE 9: X-Y COORDINATE DEMO WINDOWS

When the application is tested as a Managed App it functions properly.



FIGURE 10: MANAGED APP

H. Zierenberg, K. Nourbakhsh

Tech Notes are published occasionally by Wonderware Technical Support. Publisher: Invensys Systems, Inc., 26561 Rancho Parkway South, Lake Forest, CA 92630. There is also technical information on our software products at [Wonderware Technical Support](#).

For technical support questions, send an e-mail to wwsupport@invensys.com.

 [Back to top](#)

©2014 Invensys Systems, Inc. All rights reserved. No part of the material protected by this copyright may be reproduced or utilized in any form or by any means, electronic or mechanical, including photocopying, recording, broadcasting, or by any information storage and retrieval system, without permission in writing from Invensys Systems, Inc.

[Terms of Use](#).