

Schneider Electric Software

Knowledge & Support Center

Doc Type	Tech Notes
Doc Id	TN1395
Last Modified Date	12/15/2016

Schneider Electric Licensing - Activate License Using ONLINE Activation

SUMMARY

Schneider Electric Licenses require license **activation**, a process whereby the authenticity of the license is verified against Wonderware license records via the **Schneider Electric License Activation Server (SELAS)** and the license is bound to the license server from which the activation was initiated.

License activation requires communication with the Schneider Electric License Activation Server (SELAS). That communication can be either **direct** over the Internet (**Online Activation**) or **indirect** through a proxy computer (**Offline Activation**).

This *Tech Note* describes the process of activating a Schneider Electric license using **ONLINE** activation. For information on performing an OFFLINE activation, please click [here](#).

ACTION

1. When purchasing a license for a Wonderware product that uses Schneider Electric licensing, the deliverable that you will receive for your order will be an **E-mail** with multiple attachments – two PDF documents and a .zip archive. Select a machine to act as a **License Server**, then save and extract the .zip archive attachment to a location easily accessible from that server. The file extracted will be an XML file.

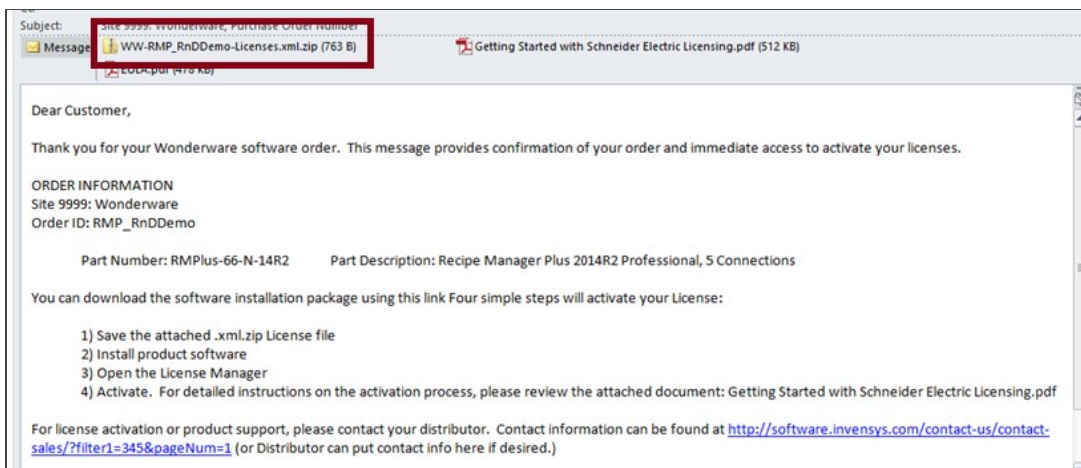


Figure 1: Entitlement Email Received after Purchase

2. When installing a product that uses the Schneider Electric licensing model, select to install the **Schneider Electric Licensing components** as well. In Figure 2 (below), installation of the Schneider Electric Licensing components is an option accompanying install of the Alarm Adviser services. For simplicity, the demonstration given in this tech note assumes both the License Server and the License Manager are installed on the same machine. If desired, those components can be split across multiple machines. More information and installation instructions can be found [here](#).

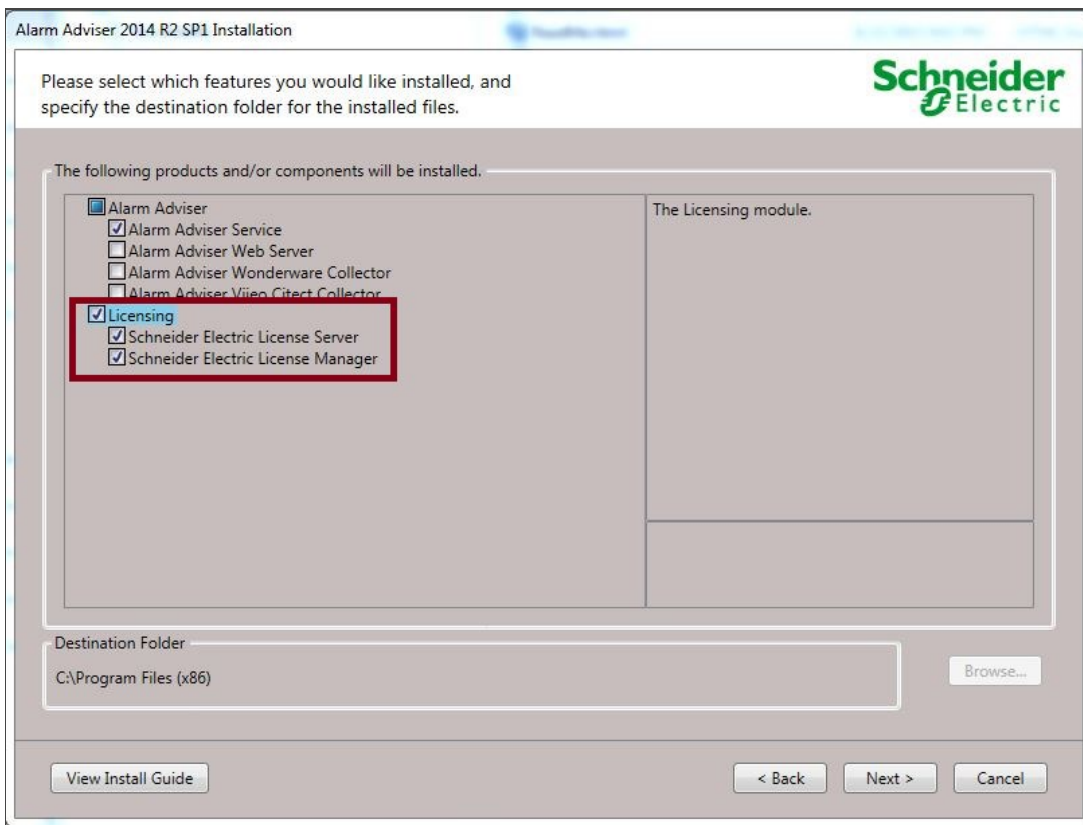


Figure 2: Install Options, including Schneider Electric Licensing Components

3. If you have installed the Schneider Electric License Server on the same computer as a WW software product that uses Schneider Electric licensing, a dialog will display prompting you to configure your software. If you did not install other Wonderware software and did not receive this prompt, continue to step 6. Otherwise, select **Configure**.

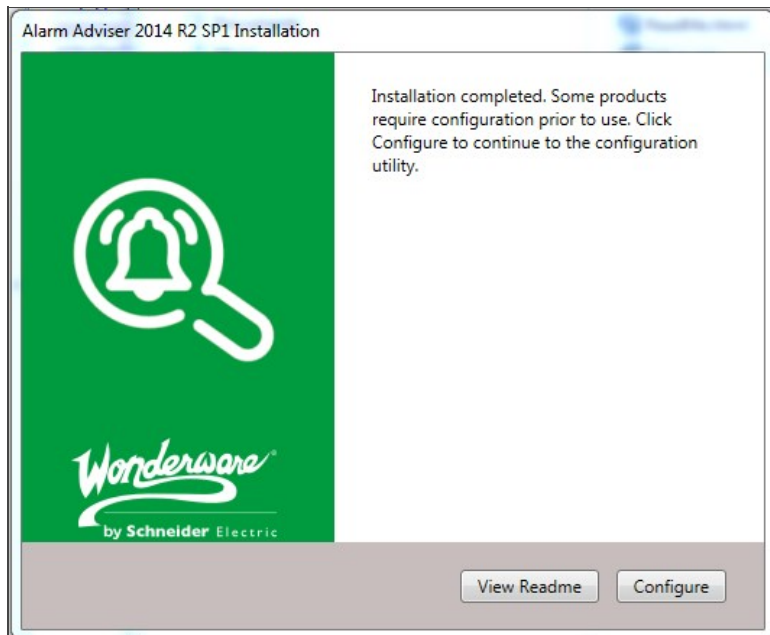


Figure 3: Post-Install Call to Configure

4. The **Configurator** will open. Configure your software as instructed in the installation guide for that software. Also configure your Schneider Electric License Server by selecting the license server component in the left menu and clicking "**Configure**".

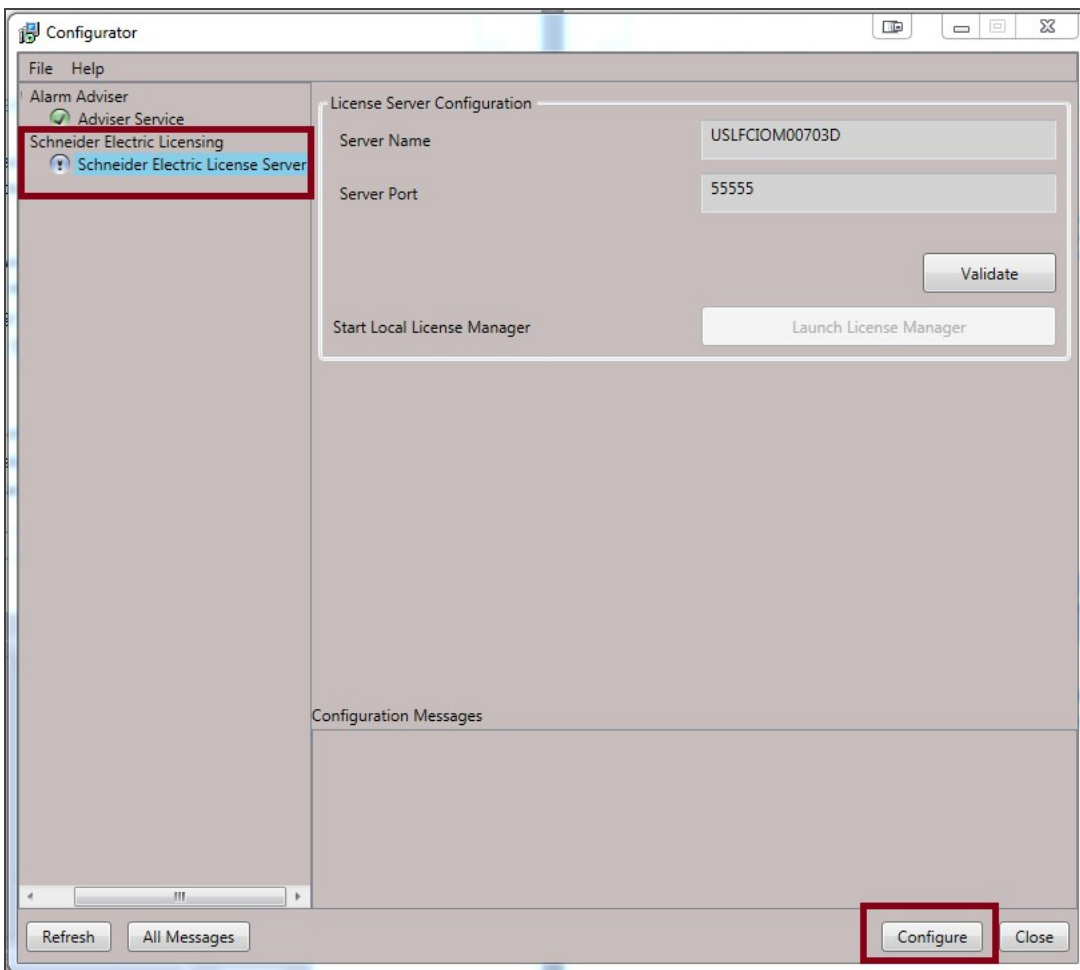


Figure 4: Configurator Dialog - License Server Not Yet Configured

- When the Schneider Electric License Server has been properly configured, there will be a **green check mark** next to that component in the components list and the **Configuration Messages** area will indicate successful configuration.

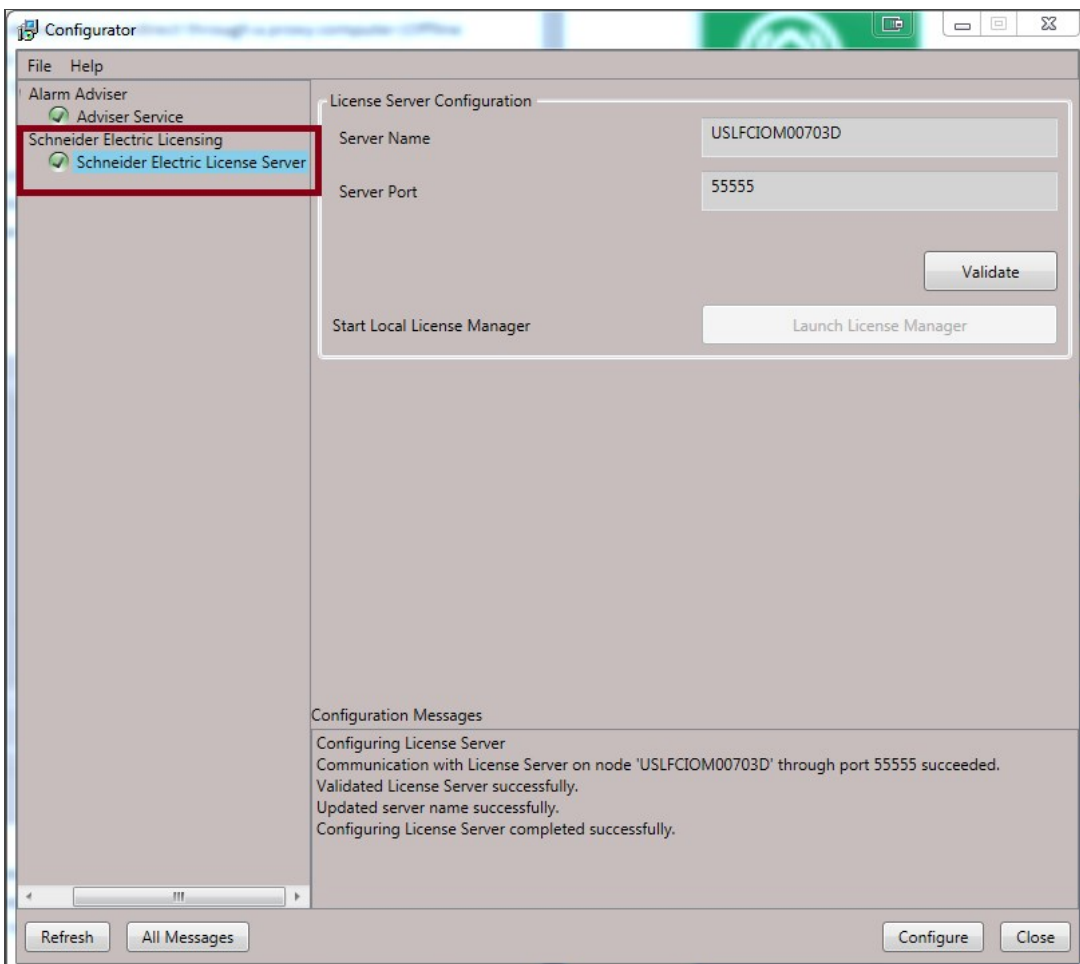


Figure 5: Configurator Dialog - License Server Configured

- Now your Schneider Electric License Server is ready for use. To activate licenses on your Schneider Electric License Server, you must open and use the Schneider Electric **License Manager**. The License Manager can be launched from **Start > All Programs > Schneider Electric > Schneider Electric License Manager**.

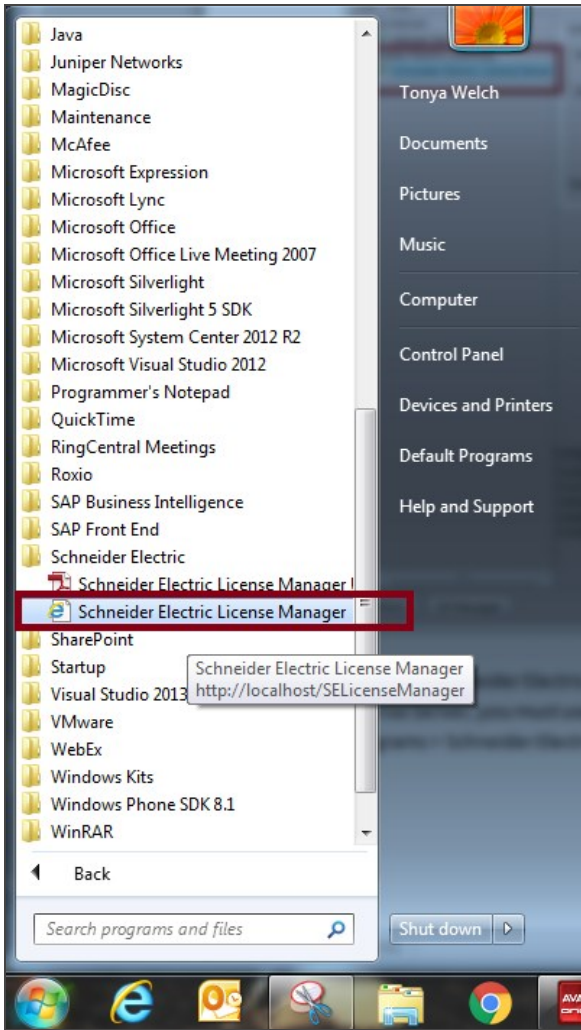


Figure 6: All Programs List Showing SE License Manager

- On opening the License Manager to the **Servers** page you should see the local License Server listed. It will have the same name as the local computer. The License Manager is set, by default, to use **Online Activation**, which can be verified by the cloud icon in the top right corner. **If there is a green check mark in the cloud, Online Activation is enabled. If there is a red X in the cloud, the License Manager is set for Offline Activation.**

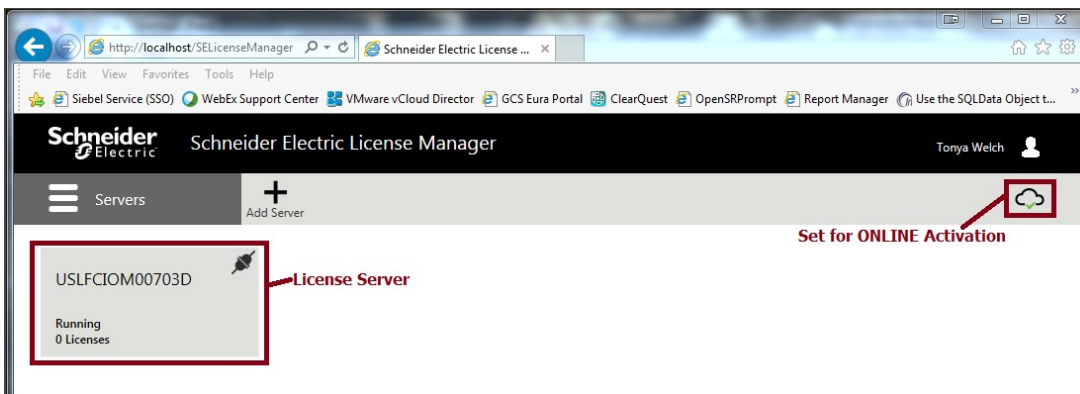


Figure 7: License Server with Online Activation Enabled

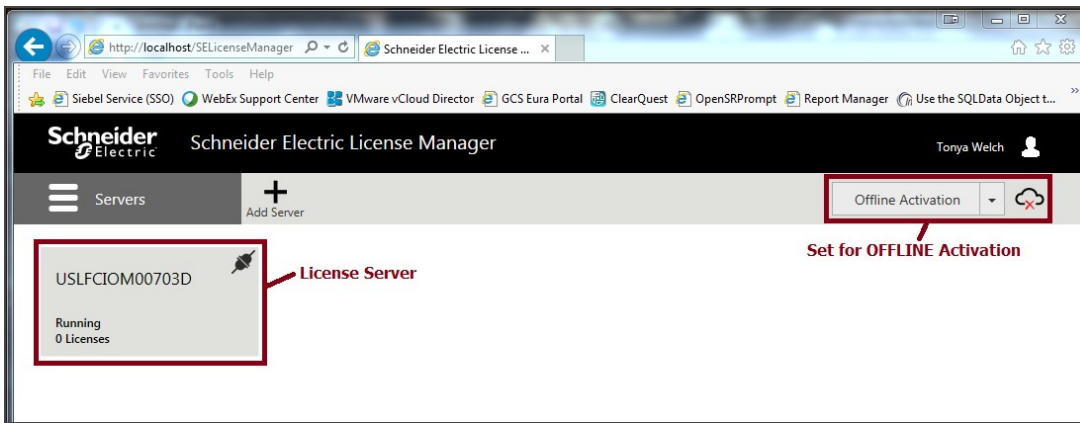


Figure 8: License Server with Offline Activation Disabled

- If the server is set for Online activation, skip to step 11. If the server is set for Offline activation, change the activation settings. Click the menu icon at top left to reveal the menu and then select **Activation Settings**.

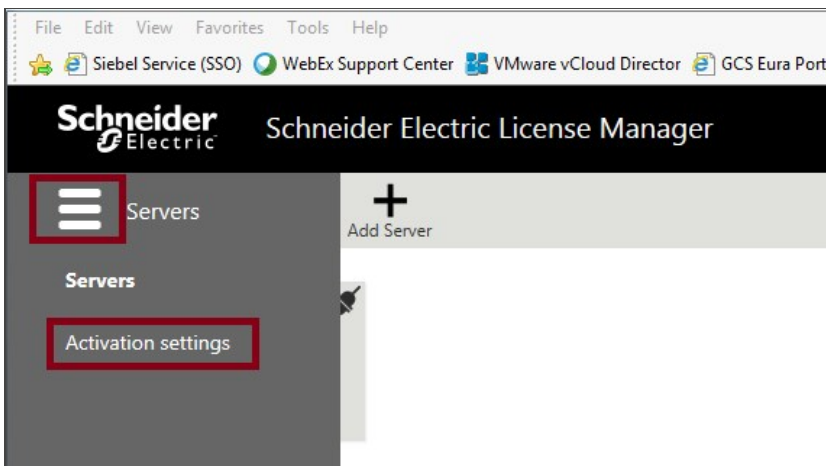


Figure 9: Accessing The Activation Settings Page

- Under **Activation Settings**, select the **Online Activation** option.

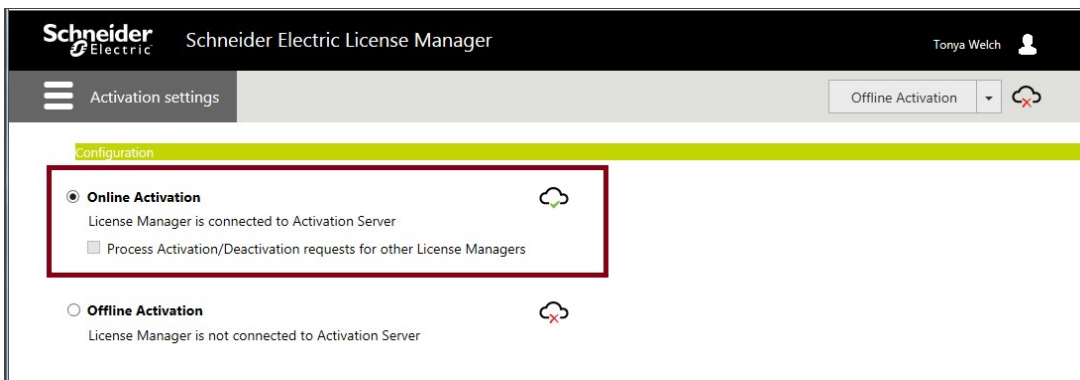


Figure 10: Enable Online Activation

- Click the menu icon again and return to the **Servers** page.

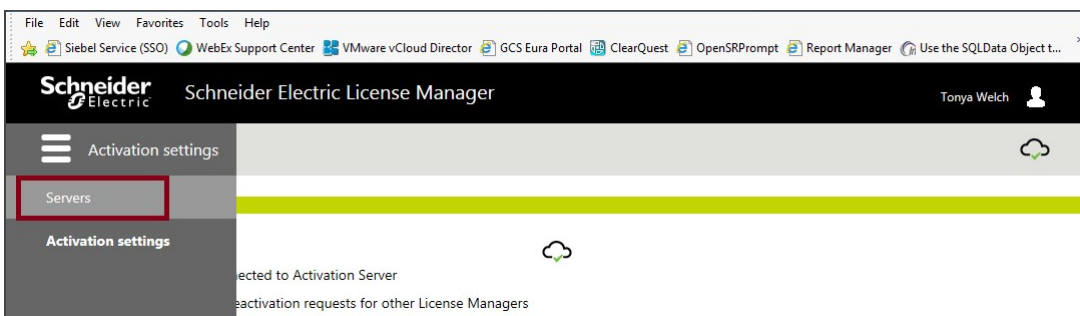


Figure 11: Return to Servers Page

- Click on the server box to go into the license activation area. Click on the **Activate** button to begin an Online Activation.

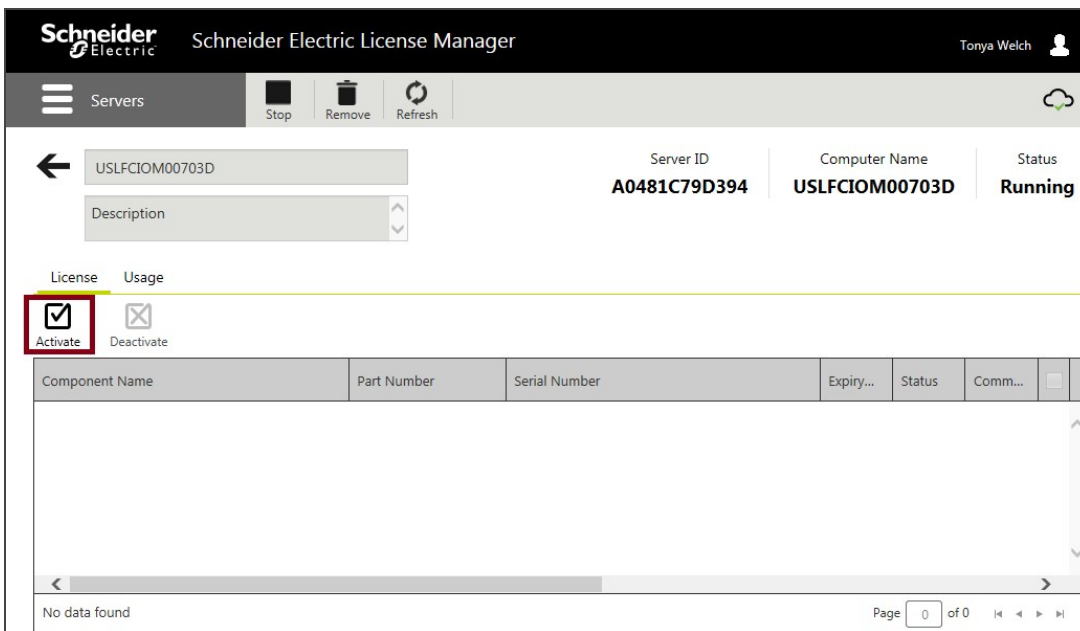


Figure 12: Begin Activation

- The **License Activation** panel will slide out from the right side of the screen. Click the ellipses button next to the **Browse** field, then browse to and select the **Entitlement XML** file that you received in Email (Step 1). As soon as you select the file, the **Activation Codes** included in the entitlement are loaded into the **License Activation** panel.

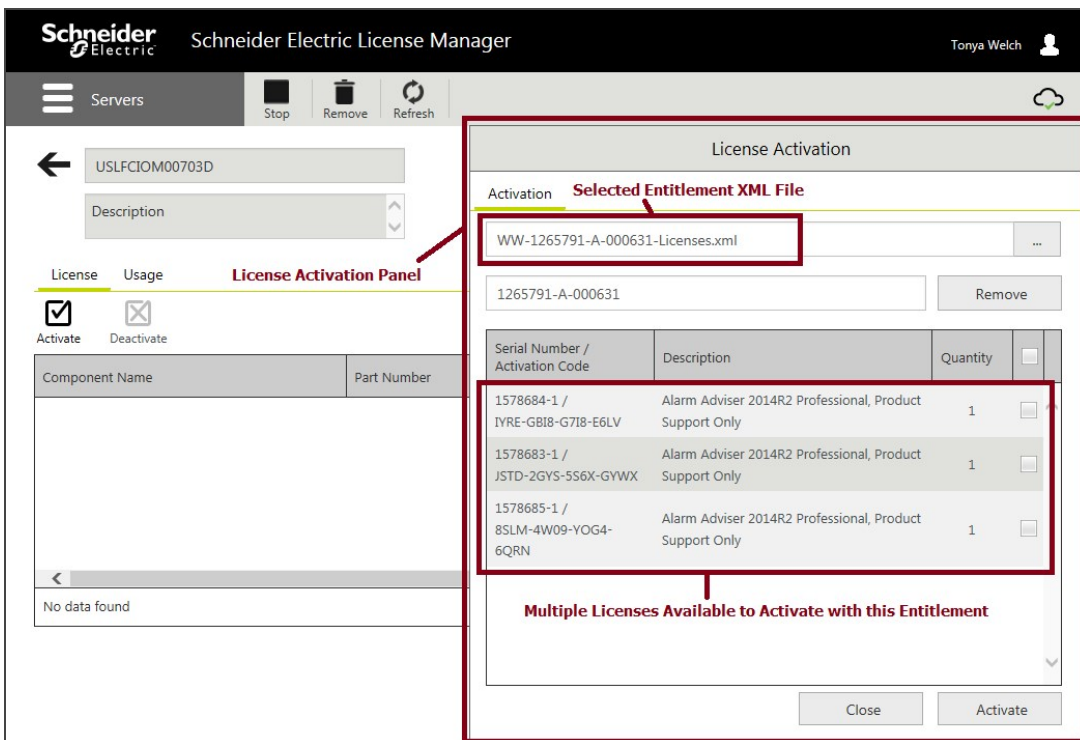


Figure 13: Load Entitlement File

- Click on the box next to the license or licenses you wish to activate. A check mark will fill the box, indicating that the license has been selected.

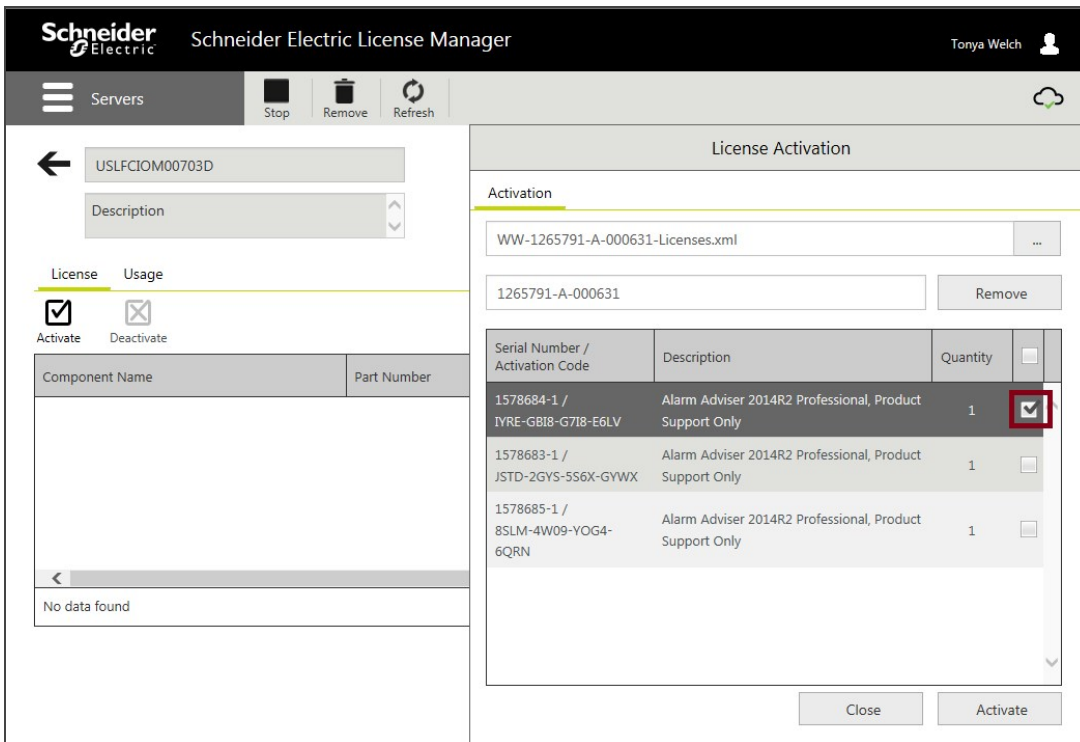


Figure 14: Select Licenses to Activate

- Click the **Activate** button at the bottom of the **License Activation** panel. For a moment the screen will get darker and there will be an animated progress circle in the middle of the screen – the License Manager is contacting and communicating with the Schneider Electric License Activation Server (SELAS).

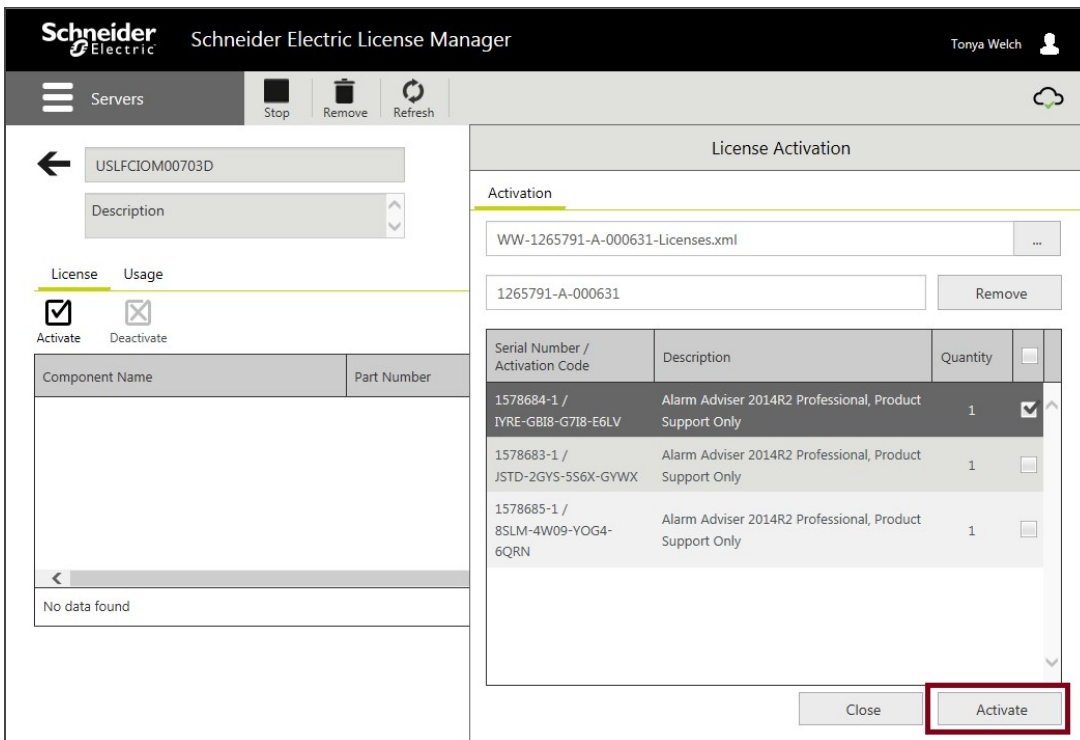


Figure 15: Activate Licenses

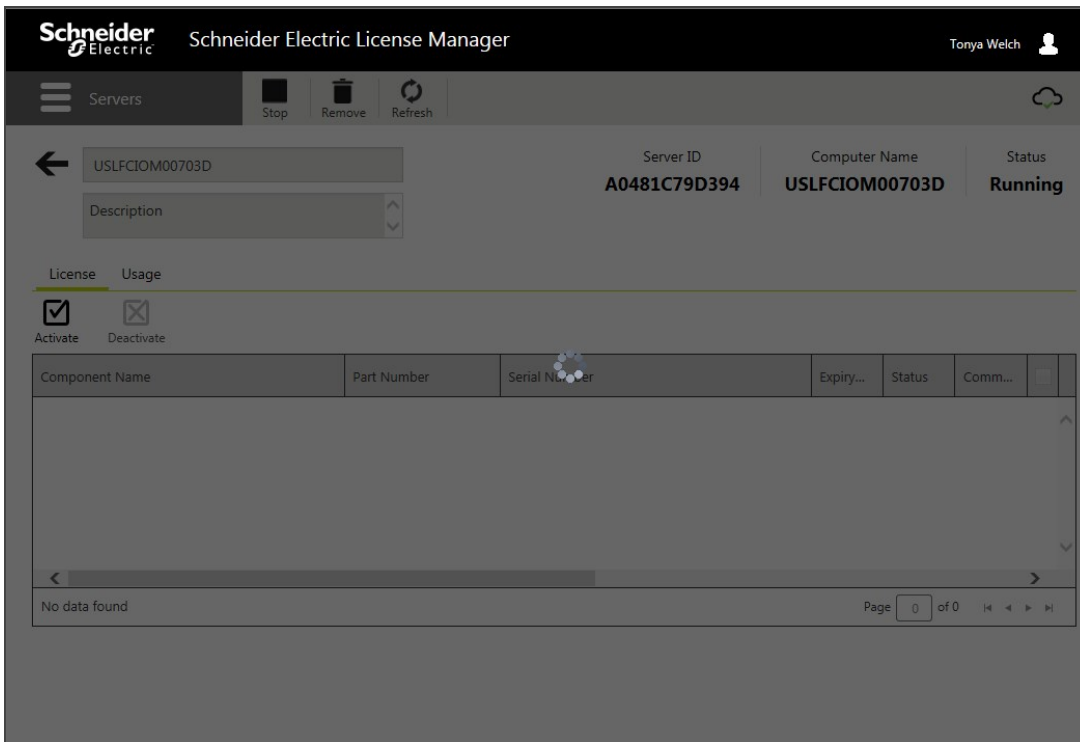


Figure 16: Pause for Communication to SELAS

- After successful activation, the **License Activation** panel closes and the license shows as **Activated** in the main window of the License Manager. Activation is complete.

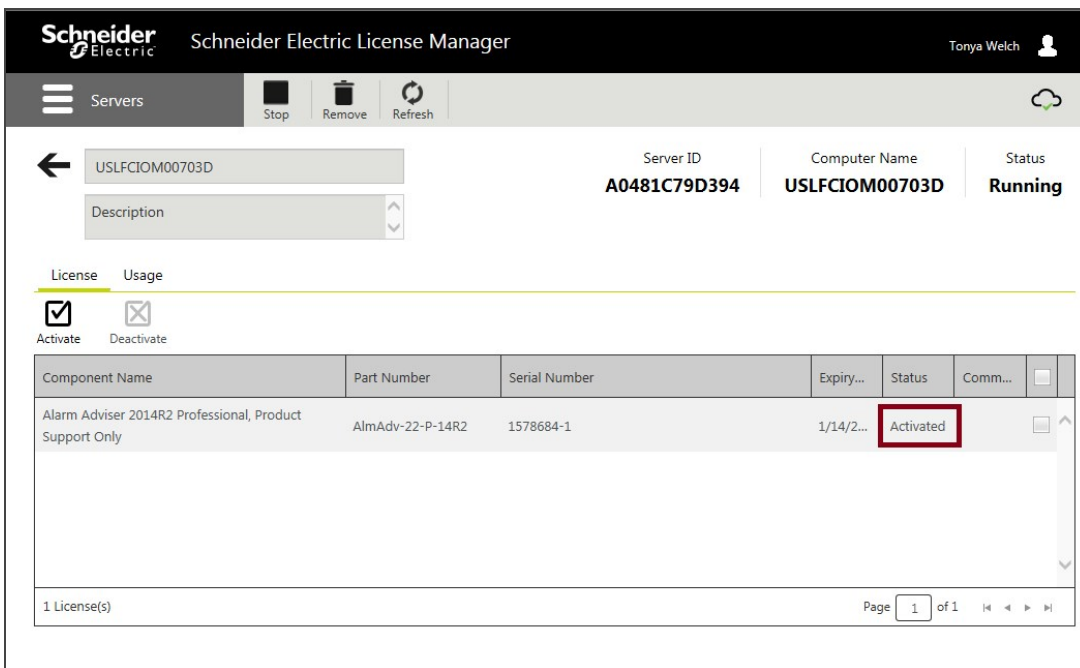


Figure 17: Activation Complete!