

Doc Type	Tech Notes
Doc Id	TN1396
Last Modified Date	12/15/2016

Schneider Electric Licensing - Activate License Using OFFLINE Activation

SUMMARY

Schneider Electric Licenses require license **activation**, a process whereby the authenticity of the license is verified against Wonderware license records via the **Schneider Electric License Activation Server (SELAS)** and the license is bound to the license server from which the activation was initiated.

License activation requires communication over the Internet with the Schneider Electric License Activation Server (SELAS). That communication can be either **direct** over the Internet (**Online Activation**) or **indirect** through a proxy computer (**Offline Activation**). This *Tech Note* describes the process of activating a Schneider Electric license using **OFFLINE** activation. For information on performing an ONLINE activation, please click [here](#).

ACTION

1. When purchasing a license for a Wonderware product that uses Schneider Electric licensing, the deliverable that you will receive for your order will be an **E-mail** with multiple attachments – two PDF documents and a .zip archive. Select a machine to act as a **License Server**, then save and extract the .zip archive attachment to a location easily accessible from that server. The file extracted will be an XML file.

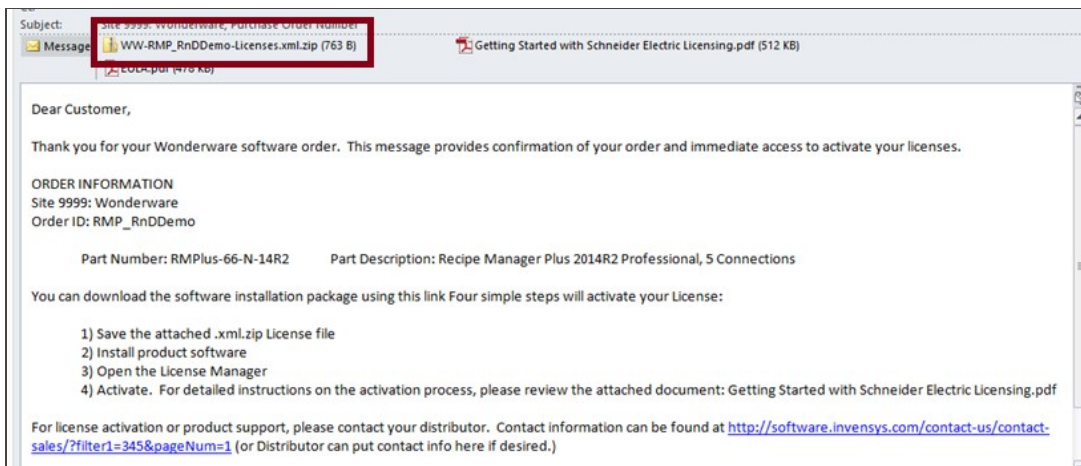


Figure 1: Entitlement Email Received after Purchase

2. When installing a product that uses the Schneider Electric licensing model, select to install the **Schneider Electric Licensing components** as well. In the below image, installation of the Schneider Electric Licensing components is an option accompanying install of the Alarm Adviser services. For simplicity, the demonstration given in this tech note assumes both the License Server and the License Manager are installed on the same machine. If desired, those components can be split across multiple machines. More information and installation instructions can be found [here](#).

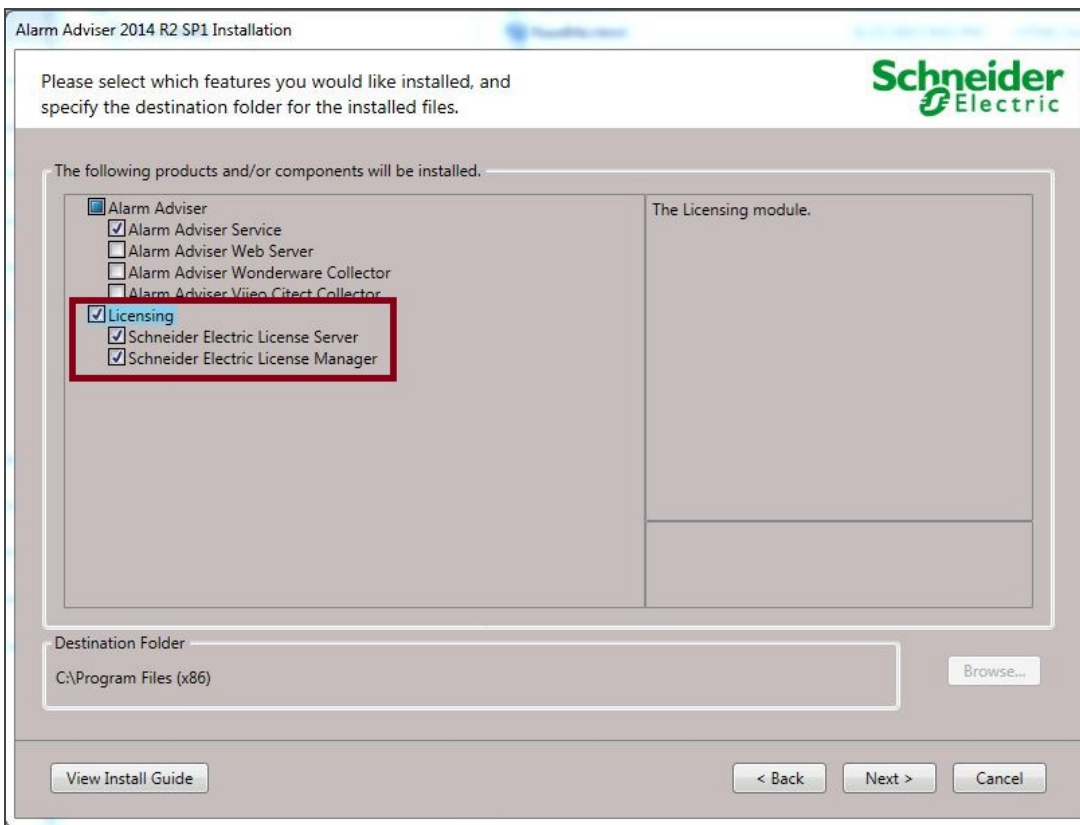


Figure 2: Optional Install of Schneider Electric Licensing Components

3. If you have installed the Schneider Electric License Server on the same computer as a WW software product that uses Schneider Electric licensing, a dialog will display prompting you to configure your software. If you did not install other Wonderware software and did not receive this prompt, continue to step 6. Otherwise, select **Configure**.

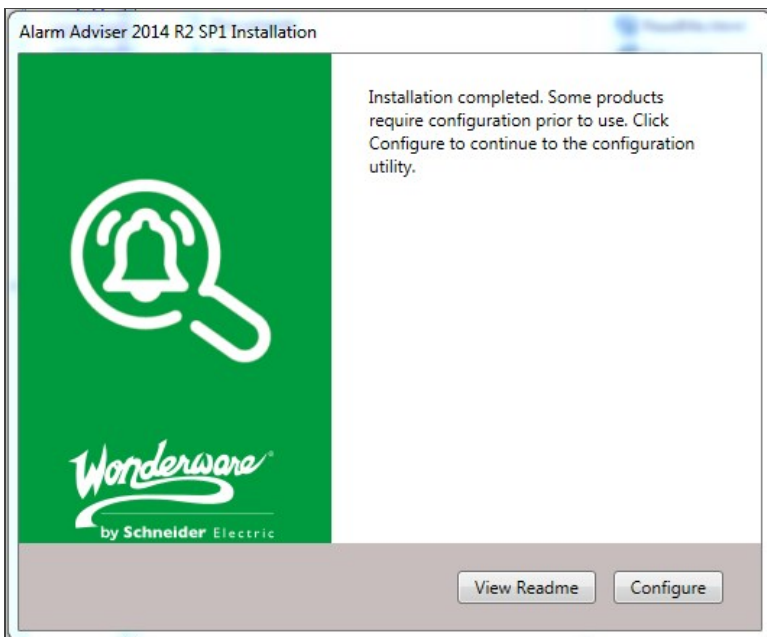


Image 3: Call to Action to Configure

4. The **Configurator** will open. Configure your software as instructed in the installation guide for that software. Also configure your Schneider Electric License Server by selecting the license server component in the left menu and clicking "**Configure**".

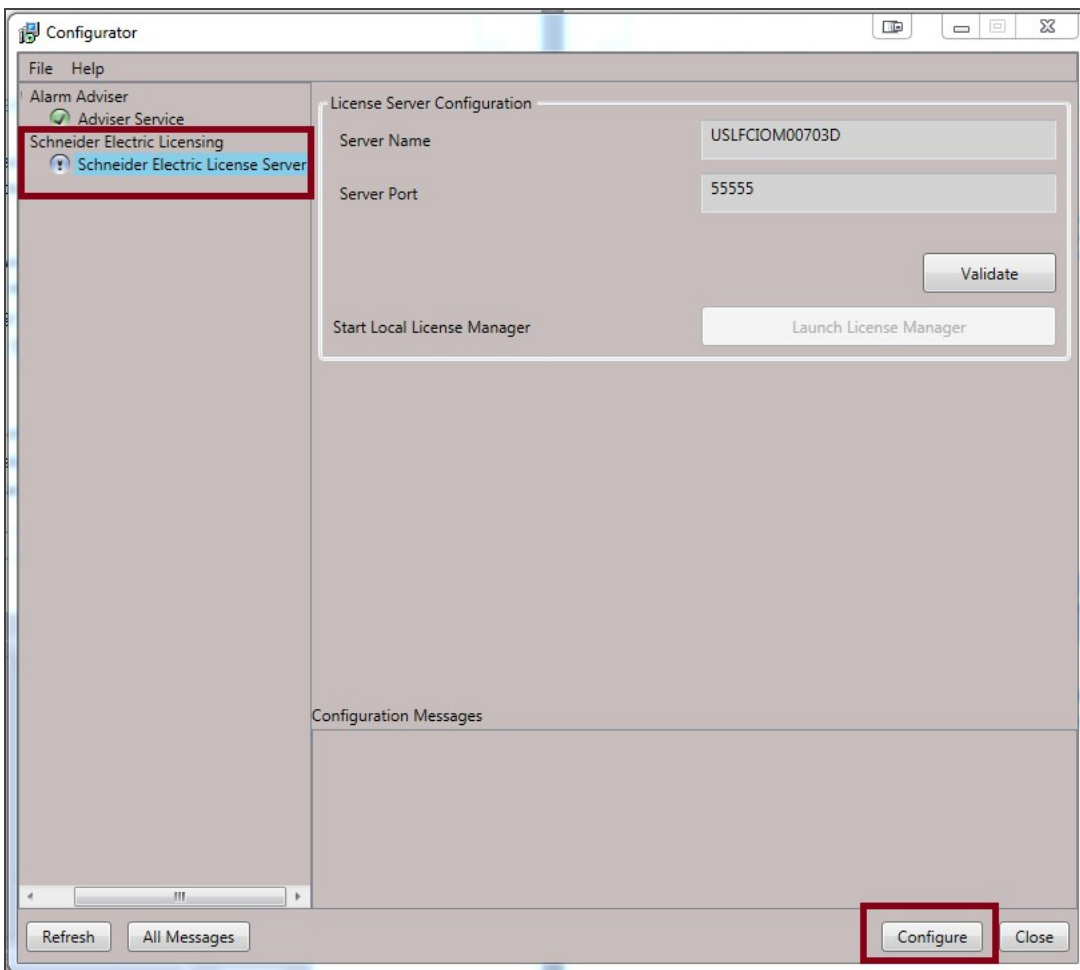


Figure 4: Configurator With Licensing Server Not Yet Configured

- When the Schneider Electric License Server has been properly configured, there will be a **green check mark** next to that component in the components list and the **Configuration Messages** area will indicate successful configuration.

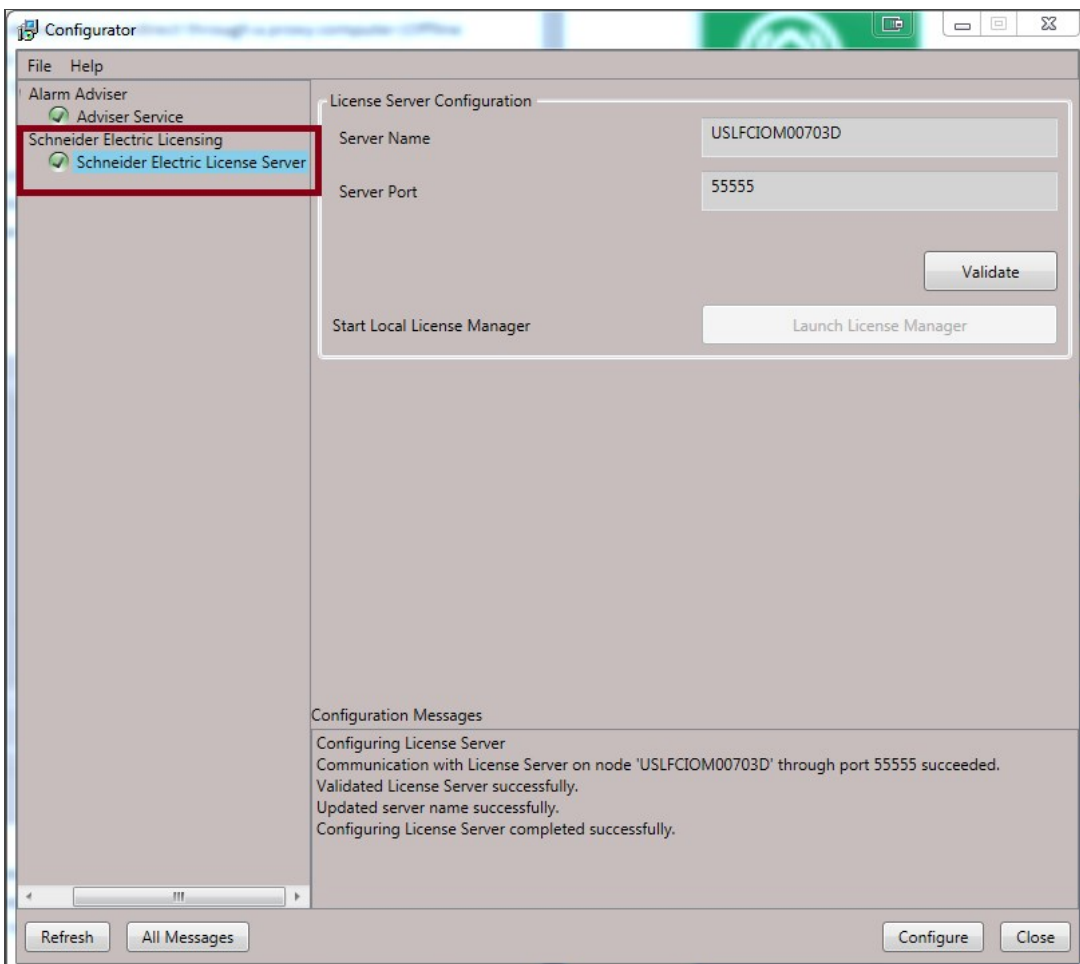


Figure 5: Configurator With License Server Configured

- Now your Schneider Electric License Server is ready for use. To activate licenses on your Schneider Electric License Server, you must open and use the Schneider Electric **License Manager**. The License Manager can be launched from **Start > All Programs > Schneider Electric > Schneider Electric License Manager**.

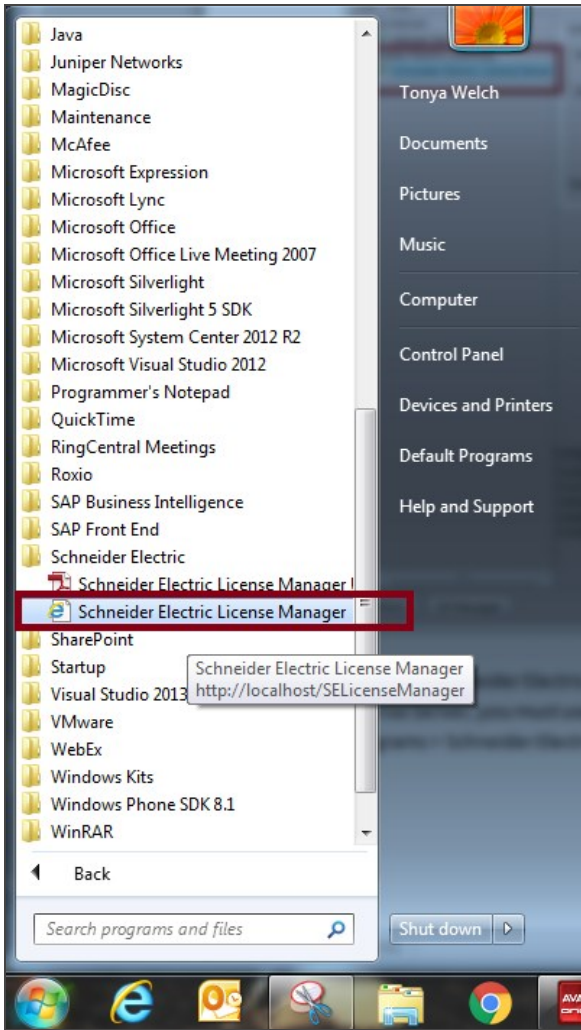


Figure 6: All Programs Showing Schneider Electric License Manager

- On opening the License Manager to the **Servers** page you should see the local License Server listed. It will have the same name as the local computer. The License Manager is set, by default, to use **Online Activation**, which can be verified by the cloud icon in the top right corner. **If there is a green check mark in the cloud, Online Activation is enabled. If there is a red X in the cloud, the License Manager is set for Offline Activation.**

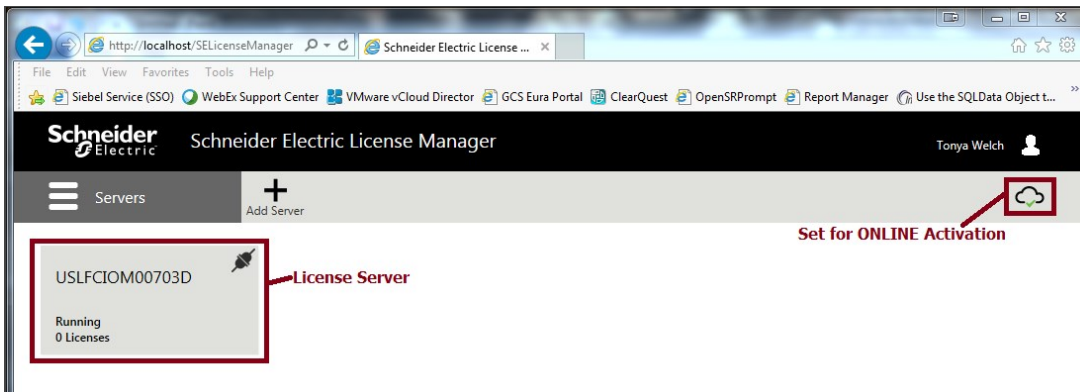


Figure 7: License Server With Online Activation Enabled

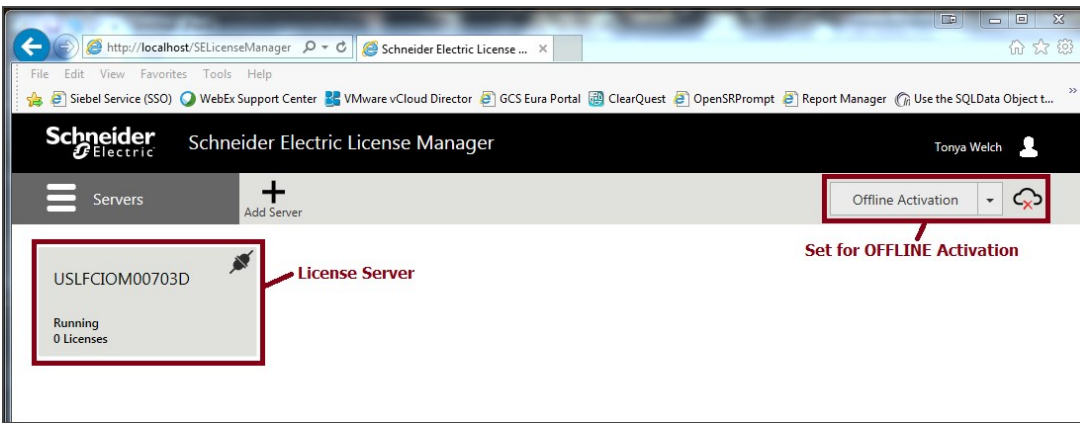


Figure 8: License Server With Offline Activation Enabled

- If the server is set for Online activation change the activation settings. Click the menu icon at top left to reveal the menu and then select **Activation Settings**.

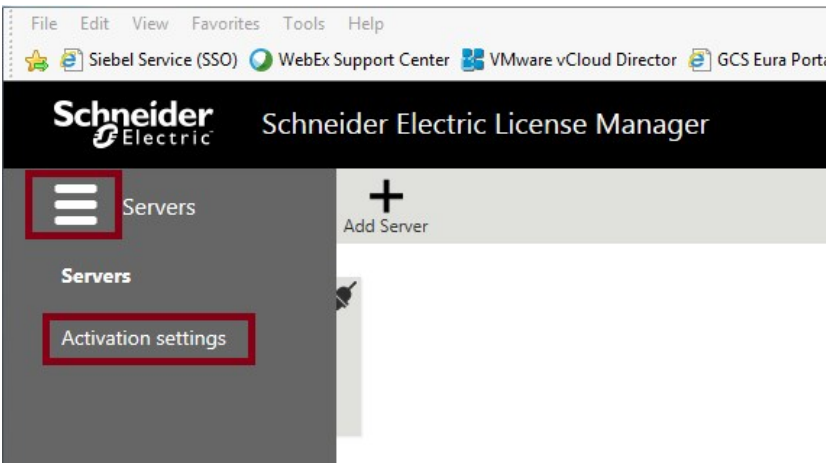


Figure 9: Accessing Activation Settings

- Under **Activation Settings**, select the **Offline Activation** option.

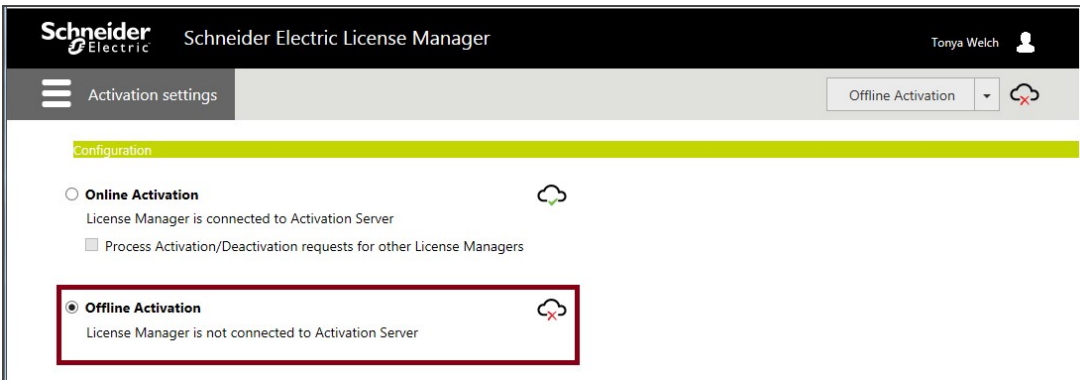


Figure 10: Select Offline Activation

- Click the menu icon again and return to the **Servers** page.

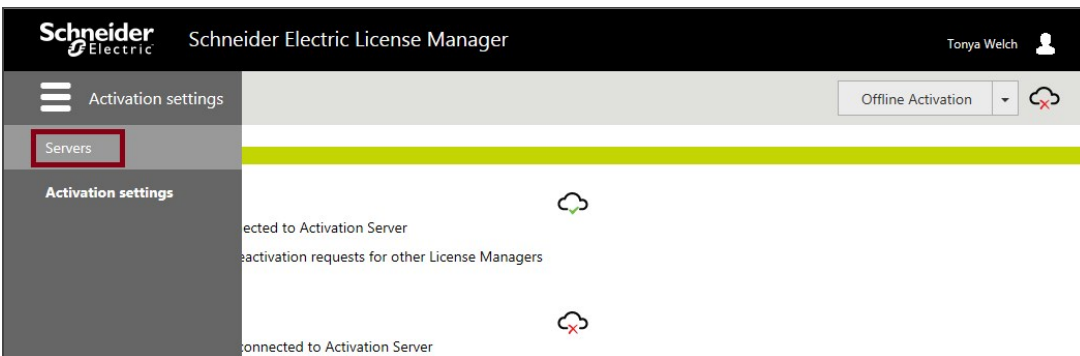


Figure 11: Return to Servers and Activation Area

- Click on the server box to go into the license activation area. Click on the **Activate** button to begin an Offline Activation.

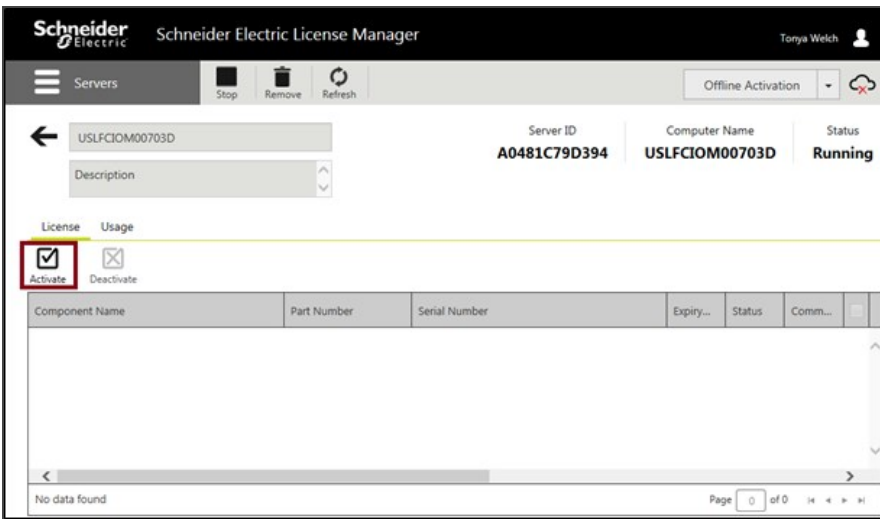


Figure 12: Begin Activation Process

- The **License Activation** panel will slide out from the right side of the screen. Click the ellipses button next to the **Browse** field, then browse to and select the **Entitlement XML** file that you received in Email (Step 1). As soon as you select the file, the **Activation Codes** included in the entitlement are loaded into the **License Activation** panel.

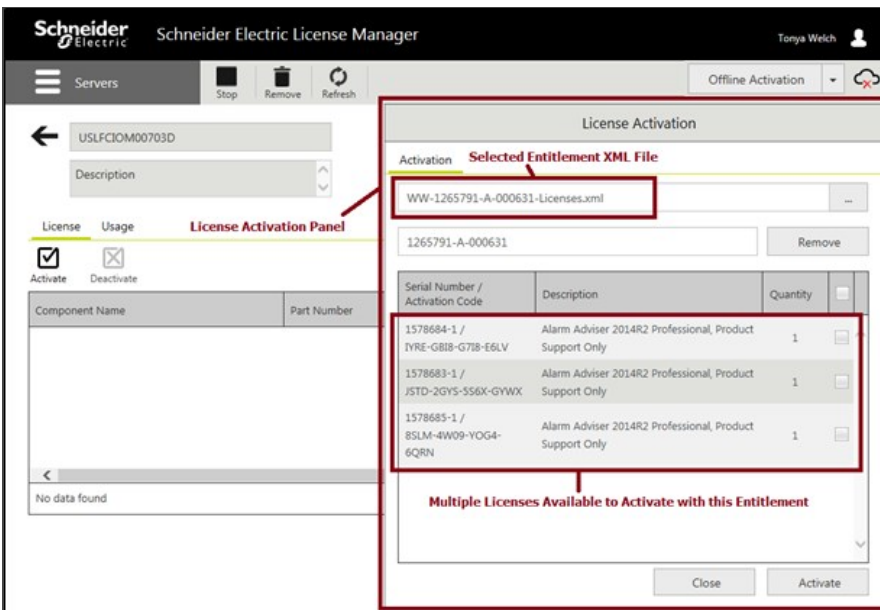


Figure 13: Entitlement Loaded into Activation Panel

- Click on the box next to the license or licenses you wish to activate. A check mark will fill the box, indicating that the license has been selected.

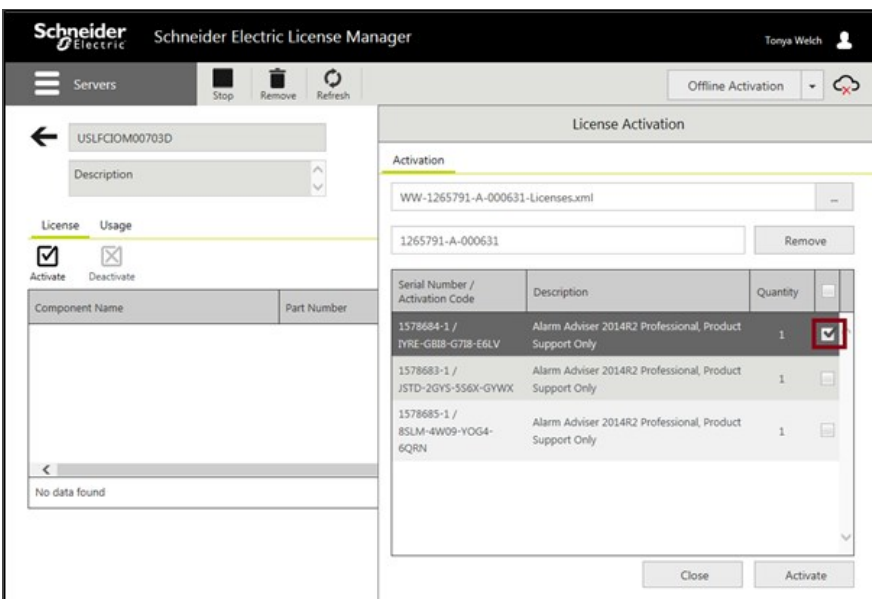


Figure 14: Selecting a License to Activate

- Click the **Activate** button at the bottom of the **License Activation** panel. For a moment the screen will get darker and there will be an animated progress circle in the middle of the screen.

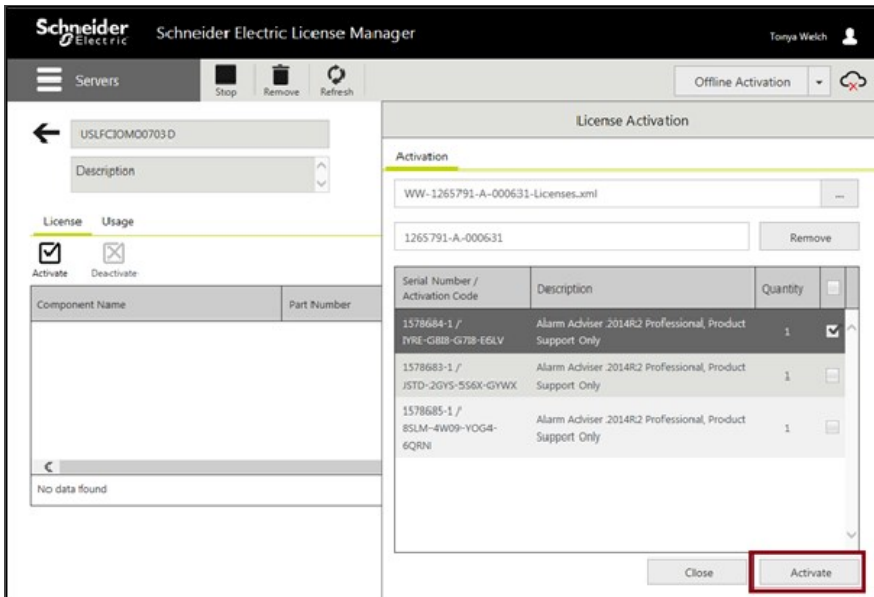


Figure 15: Activating the License

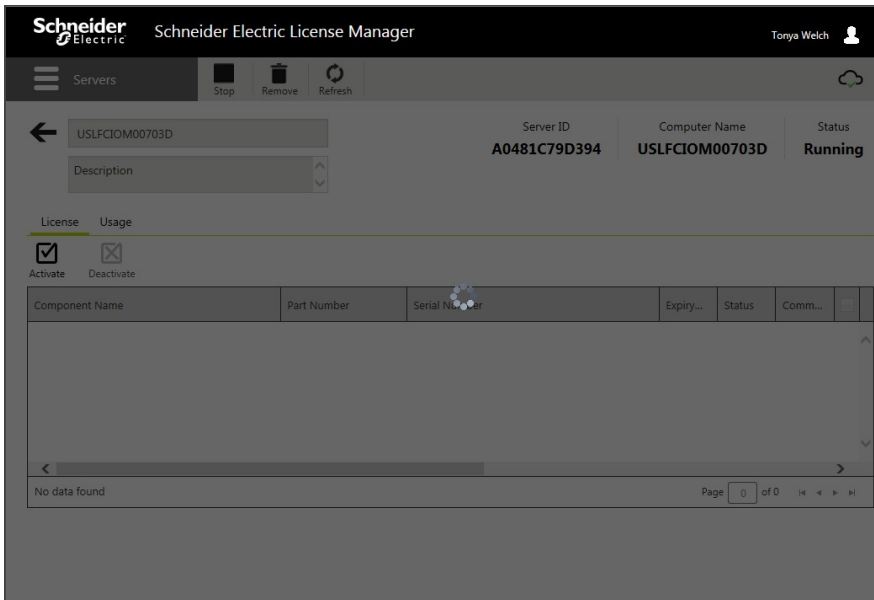


Figure 16: Pause While License Is Marked as Pending Activation

- The license will then show in the License Manager with a status of **"Pending Activation Request"**. Additionally, the **Offline Activation** select menu will be highlighted yellow.

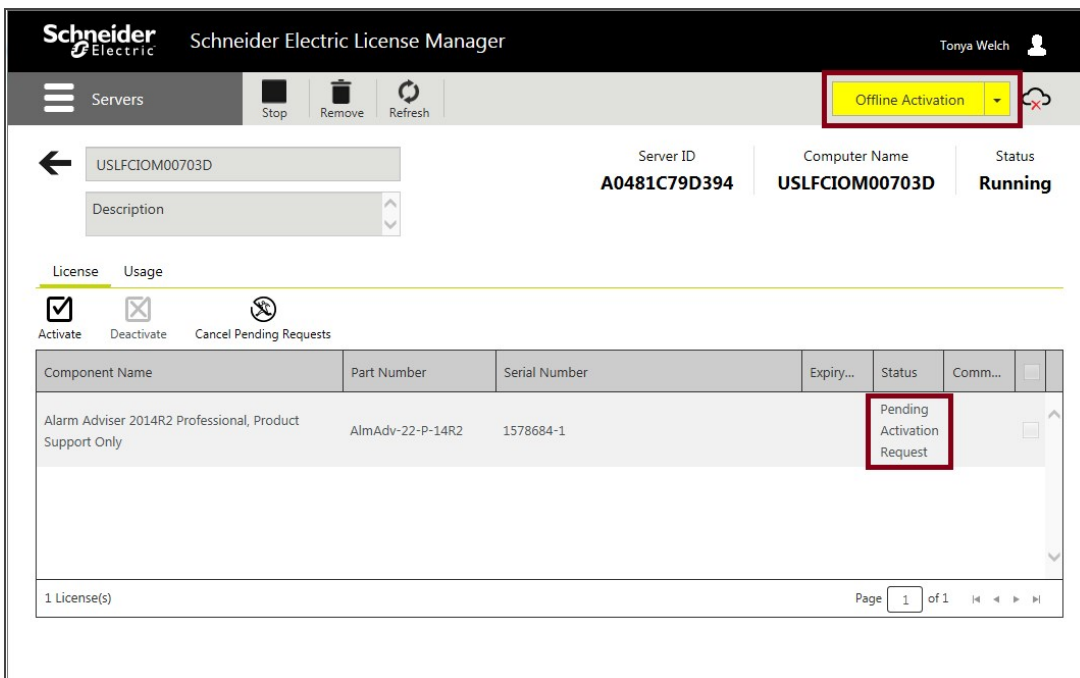


Figure 17: License Pending Activation

- Click the down-arrow on the **Offline Activation** select menu and select **Request Activation/Deactivation**.

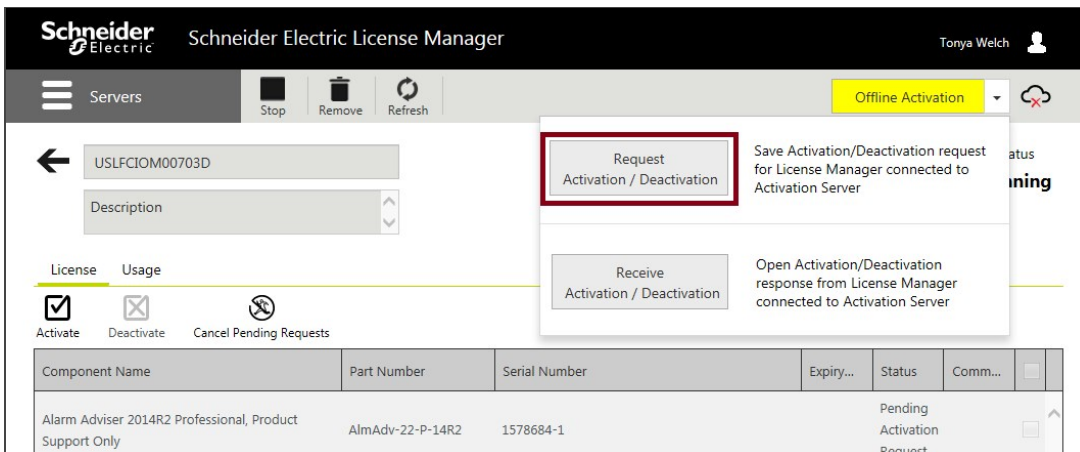


Figure 18: Requesting Activation File

- Click **Yes** on the **Confirmation** dialog.

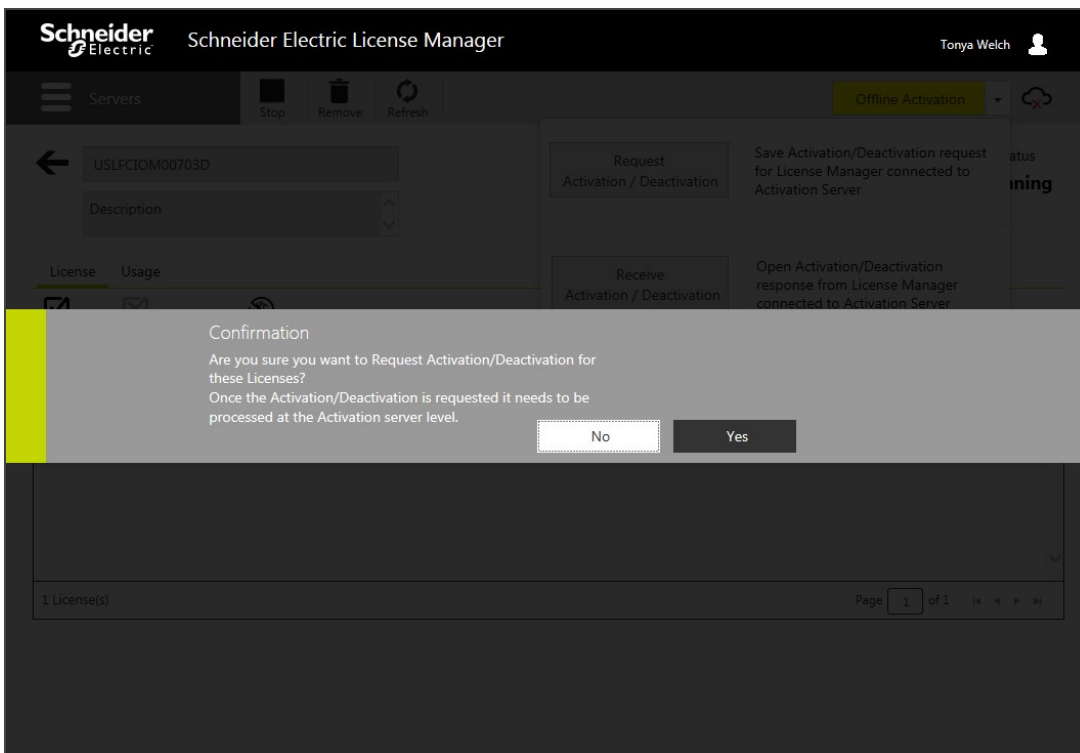


Figure 19: Confirm Request

- You will be prompted to download a file. The file's name begins with "send" and ends with the **.sync** extension. This is the **send.sync** file. Save this file to a flash drive or other portable media.

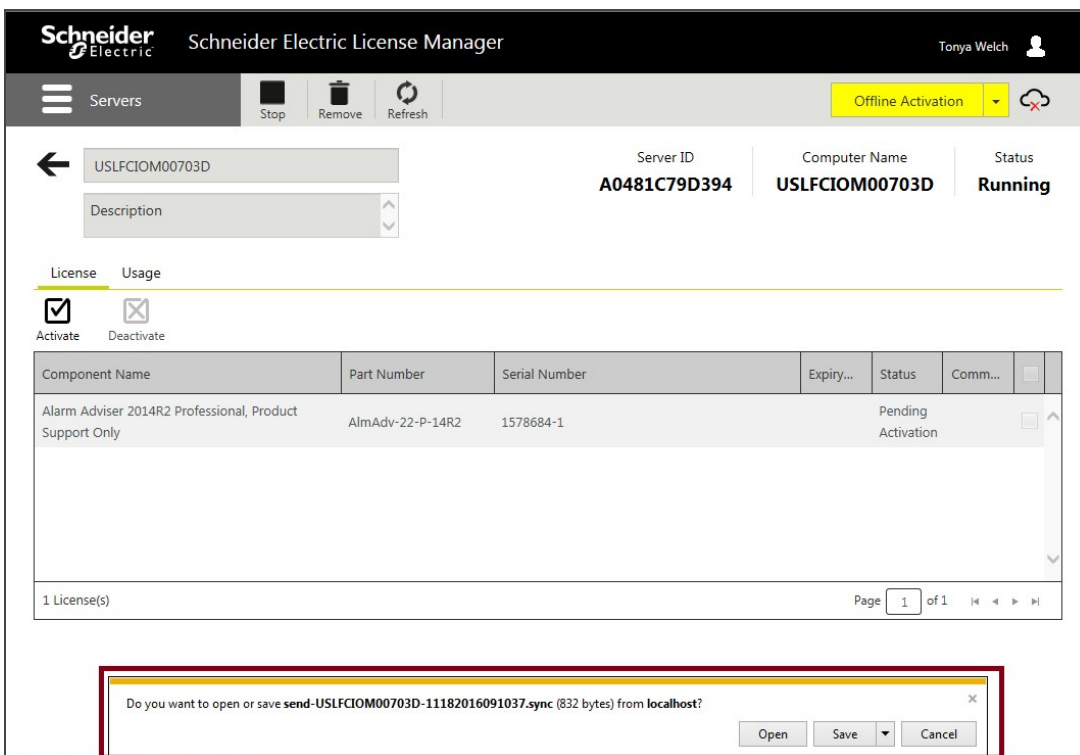


Figure 20: Download Activation File Prompt

- Locate a computer that has an open connection to the Internet. Insert your portable media. Open a browser (IE, Chrome or Firefox) and navigate to URL <http://licenseactivation.wonderware.com>.

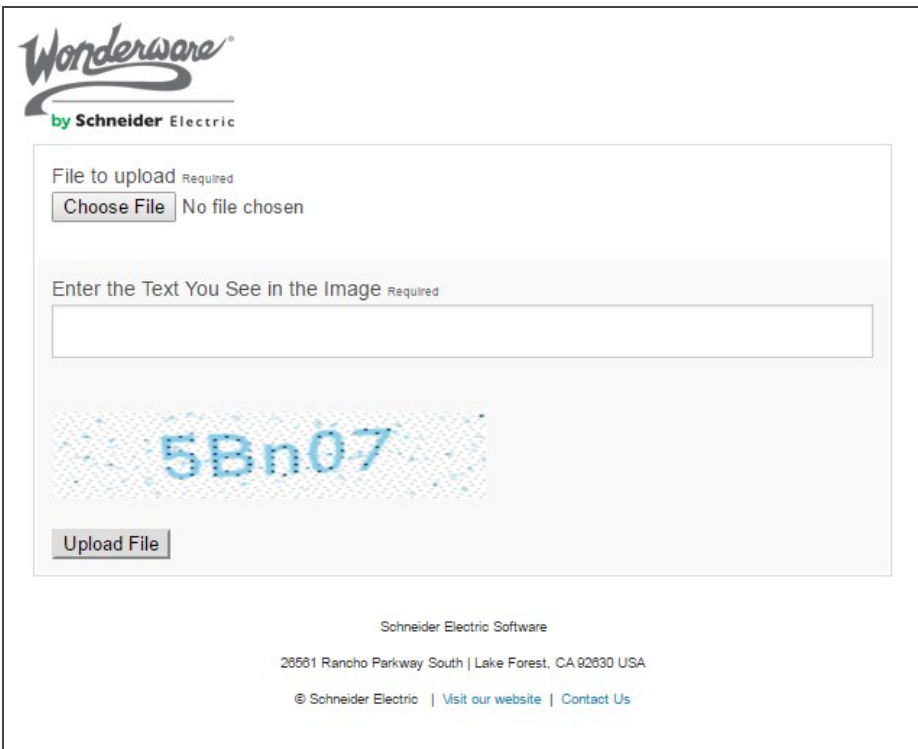


Figure 21: Schneider Electric License Activation Website

20. Click the **Choose File** button. Browse to the location of your portable media and select the send.sync file. Enter the Captcha text seen in the image, then click **Upload File**.



Figure 22: Upload File

21. After a short pause, you will be prompted to save a new file. The file name begins with “recv” and has the **.sync** extension. This is the **recv.sync** file. Save this file to your portable media.

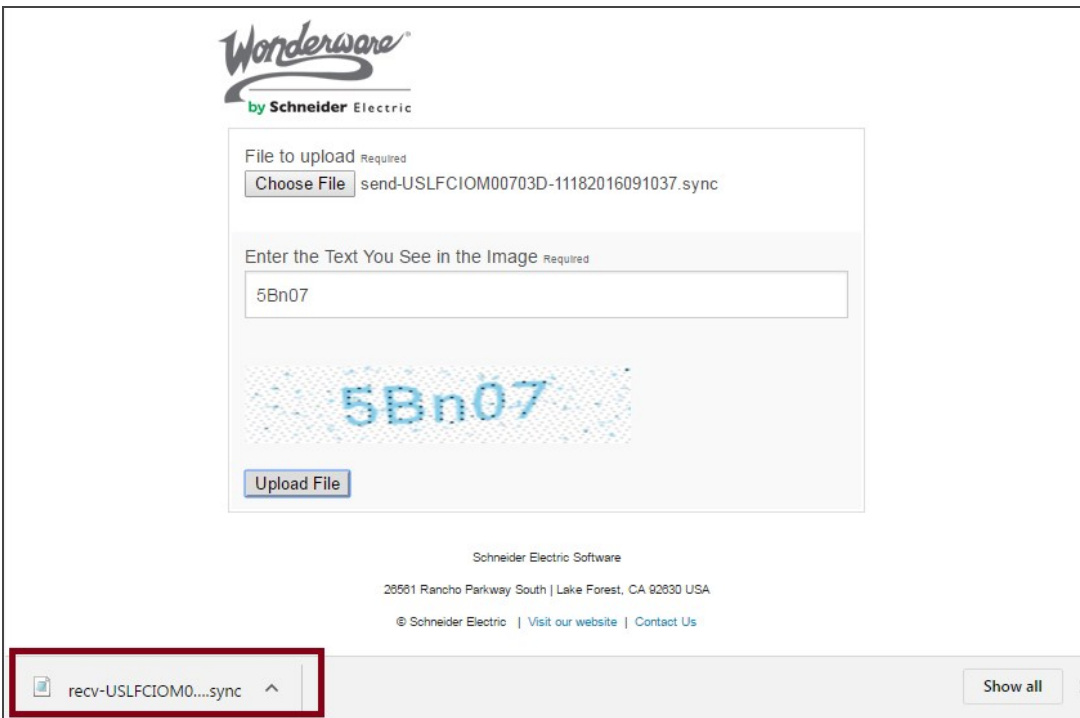


Figure 23: Download Activation File

22. Return to the offline License Server machine. Insert your portable media.
23. Launch the **Schneider Electric License Manager**. On the **Offline Activation** select menu, select **Receive Activation/Deactivation**.

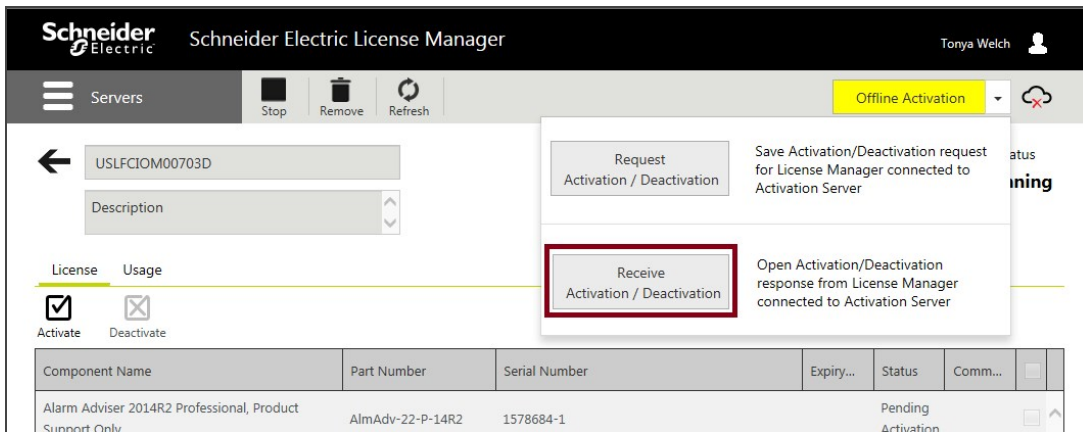


Figure 24: Entitlement Email Received after Purchase

24. Browse to your portable media and select the **recv.sync** file. For a moment the screen will get darker and there will be an animated progress circle in the middle of the screen.

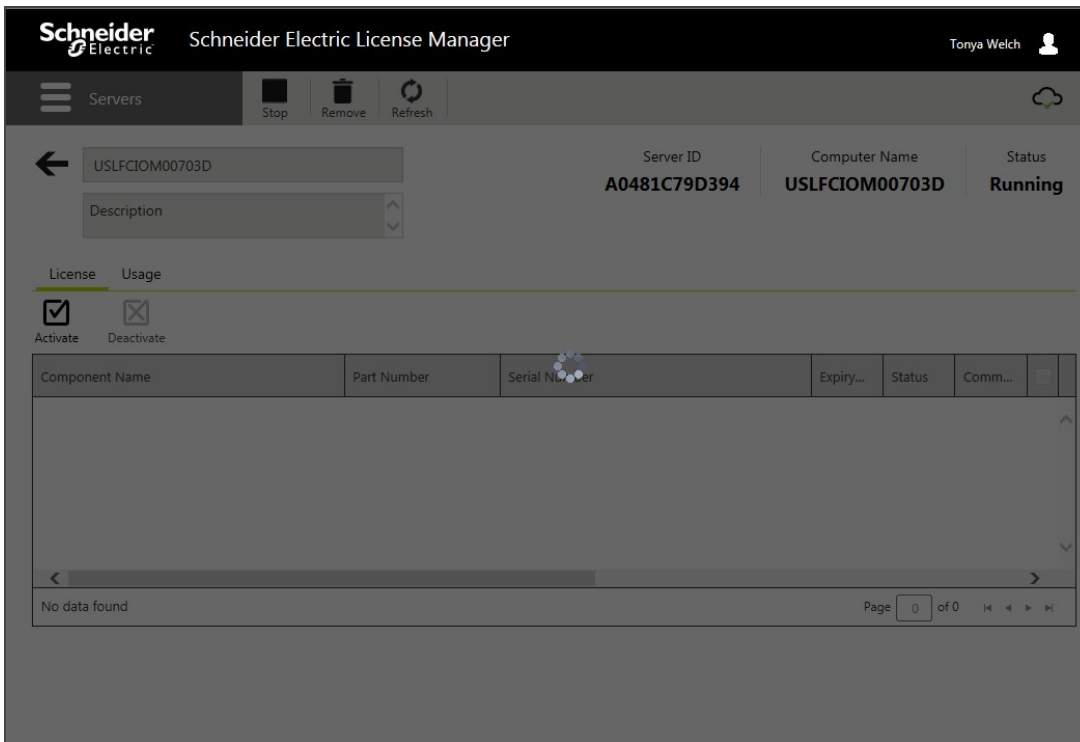


Figure 25: Activation File Being Loaded and Processed

25. The license is now successfully activated!

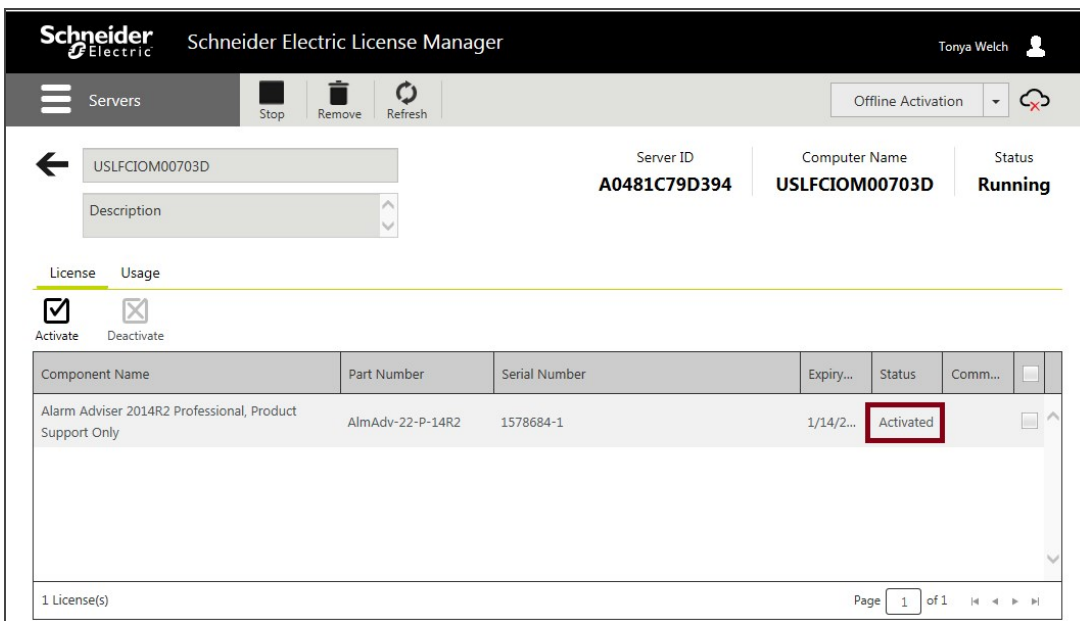


Figure 26: Successfully Activated License