

Tech Note 330**Resolving Remote IDAS Security Issues in Windows XP Workgroup Environment**

All Tech Notes and KBCD documents and software are provided "as is" without warranty of any kind. See the [Terms of Use](#) for more information.

Topic#: 001156
Created: December 2003

When IndustrialSQL™ Server and its Remote IDAS nodes are both running on WindowsXP® Pro and are in the same workgroup, InSQLServer may have trouble starting up the IDAS ("InSQLDataAcquisition") service on the remote node.

This *Tech Note* describes a workaround to facilitate using Remote IDAS within a WindowsXP workgroup environment.

Description

When WindowsXP is used in a workgroup environment, the default behavior is for remote machines to present themselves as the Guest account when accessing another machine in the workgroup.

Even though InSQL Server and its remote components like IDAS and MDAS are configured to all run under the same administrative account, when the InSQLConfiguration service calls to start IDAS, or when IDAS tries to talk to InSQLConfiguration, it is done in the context of the Guest account.

The main problem is that the Guest account does not have the required permissions to query the Service Control Manager on a remote machine, and the system fails to work as desired.

Workaround

To work around this problem, you may change the default behavior so remote access is done in the context of the actual account, not the Guest account.

1. To do this, go to **Control Panel\Administrative Tools\Local Security Policy\Security Options**.
2. Double-click the **Network access: Sharing and security model for local accounts** line and change the setting to **Classic - local users authenticate as themselves** (following figure).

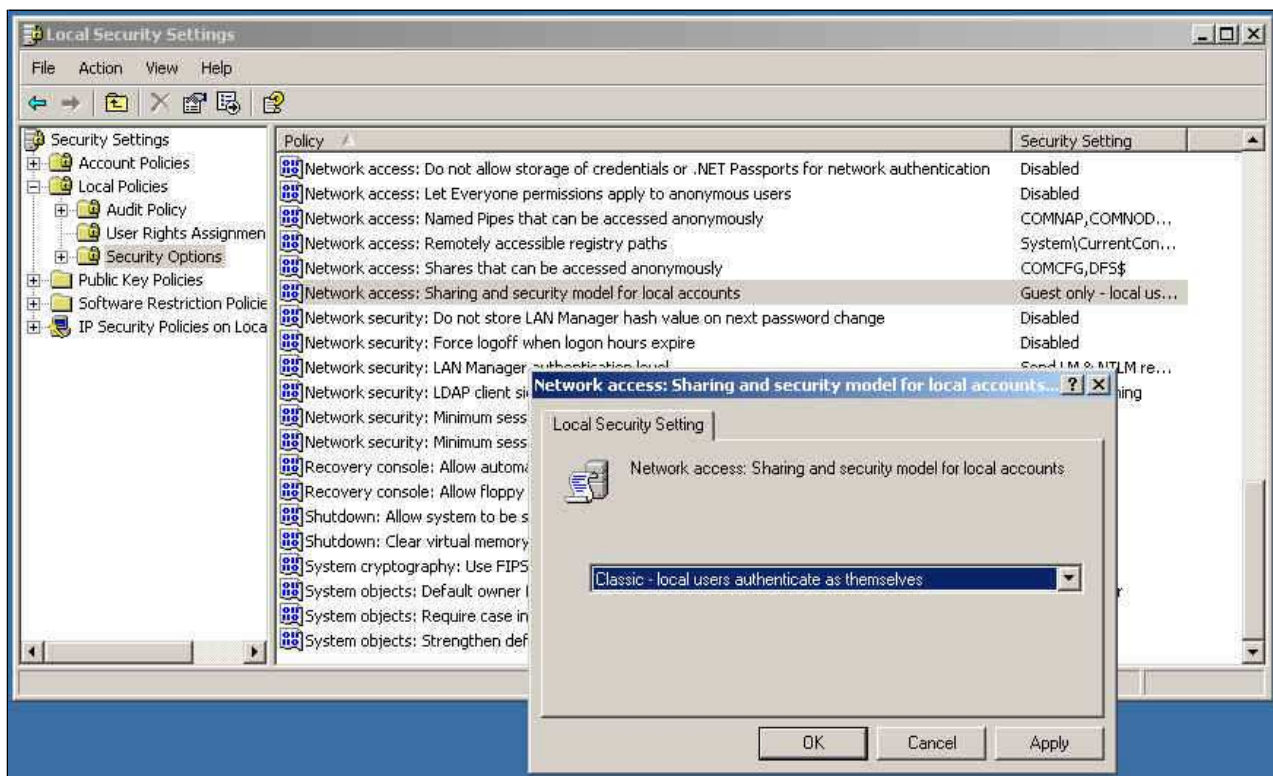


FIGURE 1: CHANGE LOCAL SECURITY ACCOUNT

C. Boutcher & J. Victor

Tech Notes are published occasionally by Wonderware Technical Support. Publisher: Invensys Systems, Inc., 26561 Rancho Parkway South, Lake Forest, CA 92630. There is also technical information on our software products at [Wonderware Technical Support](#)

For technical support questions, send an e-mail to support@wonderware.com.

 [back to top](#)

©2011 Invensys Systems, Inc. All rights reserved. No part of the material protected by this copyright may be reproduced or utilized in any form or by any means, electronic or mechanical, including photocopying, recording, broadcasting, or by any information storage and retrieval system, without permission in writing from Invensys Systems, Inc. [Terms of Use](#).