

Tech Note 390

InTouch® NAD and Slow Networks: Reduce Startup Time and Network Bandwidth Consumption by Configuring a NAD Proxy

All Tech Notes and KBCD documents and software are provided "as is" without warranty of any kind. See the **Terms of Use** for more information.

Topic#: 002066
Created: January 21, 2005

Introduction

This Tech Note outlines how to reduce network utilization in a NAD environment by configuring one of the InTouch NAD-Clients to behave as a NAD-Proxy.

Issue

Publishing an application change in a typical NAD-Master \ NAD-Client configuration causes *all* NAD-Clients accessing the NAD-Master to receive the application updates. This operation reduces the available bandwidth and consumes it for long periods of time.

The following figure shows a typical NAD Change Update operation:

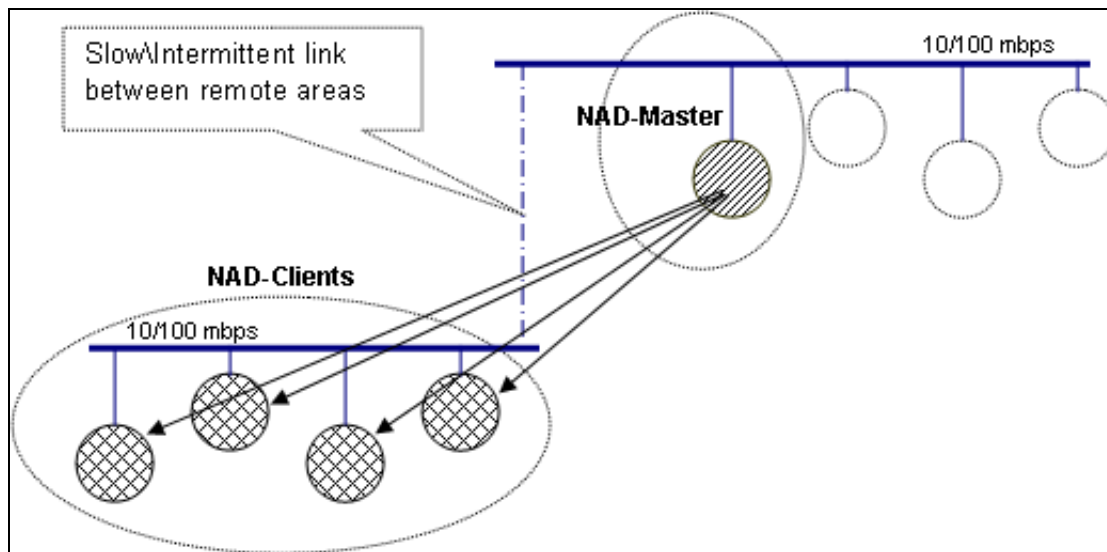


FIGURE 1: TYPICAL NAD CHANGE UPDATE

Solution

To reduce the network utilization we can configure one of the InTouch NAD-Clients (which resides in the remote area) to behave as a **NAD-Proxy**.

A NAD-Proxy serves as a NAD-Client that accepts the application changes from the NAD-Master and then notifies the NAD-Clients on its local network of the application changes.

The following figure shows a typical NAD Change Update operation using a node configured as a NAD-Proxy:

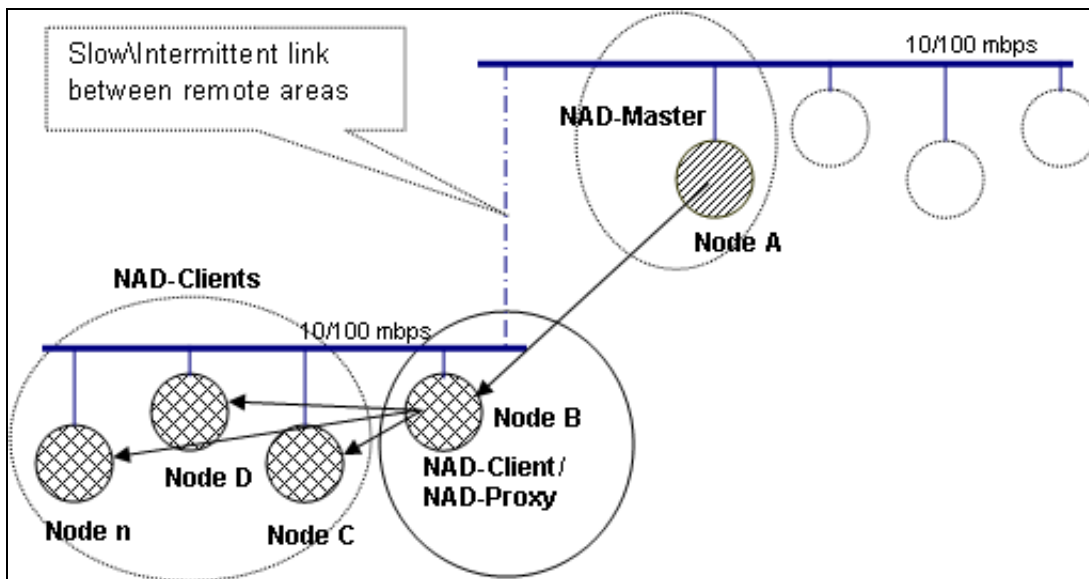


FIGURE 2: PROXY CONFIGURATION

NAD Configuration for NAD Proxy

Node A: NAD-Master

1. The NAD-Master Folder has to be shared (e.g. Application Directory as **C:\App\NADMaster**).

Node B: NAD-Client\NAD-Proxy

1. Configure the NAD-Client \ NAD-Proxy as a NAD-Client of the NAD-Master folder.

For example: The Local Working Directory as **C:\App\NadClient** and Application Directory as **\\NodeA\NADMaster**.

2. Share the NAD-Client \ NAD-Proxy folder.

For example: Share the (NAD-Proxy) application directory as (e.g. **C:\App\NADClient**).

3. Select a **Change Mode** of your choice in the **Node Properties/Change Mode** area.

In this example, the **Load Changes into WindowViewer** option is selected (Figure 3 below):

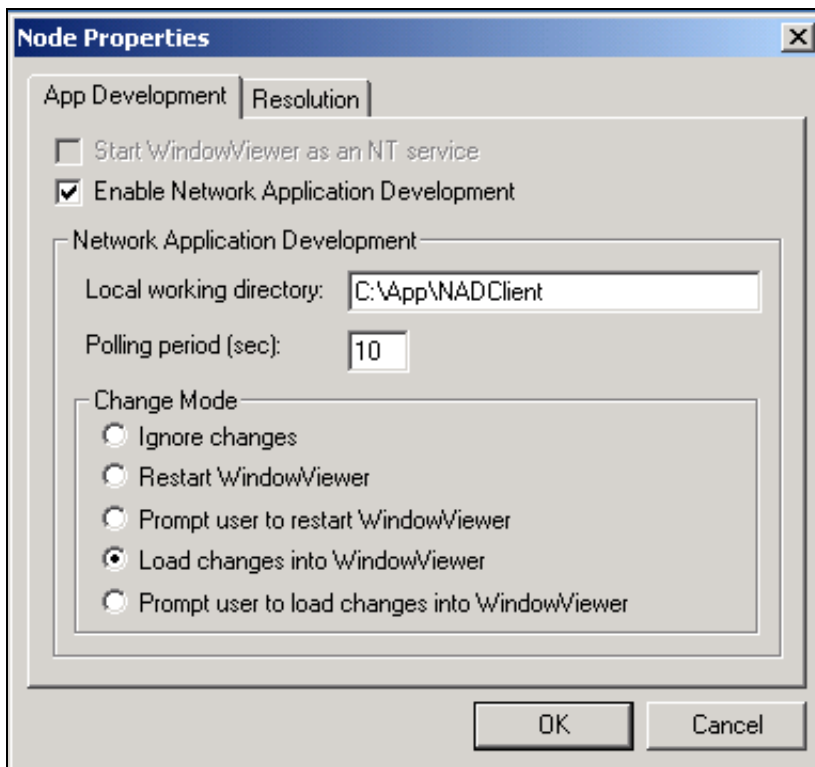


FIGURE 3: NAD CLIENT NODE SETTINGS

Other NAD-Clients Nodes:

1. Configure all other NAD-Clients to be NAD-Clients of the **NAD-Proxy** folder.

For example: The Local Working Directory as **C:\App\NADClient** and Application Directory as **\\NodeB\NadClient**.

2. Select a **Change Mode** of your choice in the **Node Properties/Change Mode** area.

Scripting

Add the following Data Change script *into* the NAD Master application. This script updates the **.fsm** file on the NAD Proxy and sends the application updates out to the NAD-Clients. The NAD-Master will not be affected by this script as the NAD-Master's \$ApplicationChanged tag is never updated. Note that this script will only actually execute on the **NAD-Proxy** node:

Tagname: \$ApplicationChanged

```
If $ApplicationChanged==0 THEN

    If InfoInTouchAppDir(<>"" THEN

        FileWriteMessage( InfoInTouchAppDir() +"\appchngd.fsm" ,
            0,"ApplicationChanged", 0 );

    Endif;

Endif;
```

Note The tag \$ApplicationChanged is set to **1** when a NAD-Client detects that the file **appchngd.fsm** on the Master-NAD has a new time stamp and resets itself to **0** (zero) when the application update is complete. Please refer to the InTouch NAD online help for additional

information regarding this process.

Monitor NAD Updates

Wonderware suggests monitoring the **\$ApplicationChanged** tag to indicate when the NAD-Proxy and NAD-Client updates are taking place. For example, set a display link's visibility or a pop-up window to show when **\$ApplicationChanged = 1**.

NAD-Related Documents

Please refer to the following documents for additional information and settings:

Tech Note 256: Using Network Application Development (NAD) with InTouch

Tech Note 360: Overcoming NAD-Related Errors

Tech Note 380: InTouch HMI® NAD and Slow Networks: How to Reduce Initial Startup Time and Network Usage by Preventing the Copy of the Full Application (v7.x and higher)

The InTouchUG.pdf: Chapter 5, **Building a Distributed Application**.

I. Barzilai, A. Rantos

Tech Notes are published occasionally by Wonderware Technical Support. Publisher: Invensys Systems, Inc., 26561 Rancho Parkway South, Lake Forest, CA 92630. There is also technical information on our software products at **Wonderware Technical Support**

For technical support questions, send an e-mail to support@wonderware.com.



back to top

©2012 Invensys Systems, Inc. All rights reserved. No part of the material protected by this copyright may be reproduced or utilized in any form or by any means, electronic or mechanical, including photocopying, recording, broadcasting, or by any information storage and retrieval system, without permission in writing from Invensys Systems, Inc. **Terms of Use**.