

## Tech Note 393

# Configuring FactorySuite Gateway for Communication Between a DDE Client and an Archestra® Data Source

All Tech Notes and KBCD documents and software are provided "as is" without warranty of any kind. See the [Terms of Use](#) for more information.

Topic#: 002070  
Created: February 2005

## Introduction

FactorySuite Gateway (FSGateway) is a protocol converter that enables communication between clients and data sources that use different data access protocols. This Tech Note explains the configuration required to enable DDE Client access to an Archestra data source.

Although you can use this Tech Note as a reference to configuring communication between any DDE Client and an Archestra data source, Microsoft® Excel is used in this example as the DDE Client.

## Assumptions

- For this Tech Note, FSGateway, Excel, and the Archestra data sources are on the same node.
- IAS contains a UserDefined object named **Counters**. The Counters object contains two UDAs named **CountDown** and **CountUp** with a data type of integer. The Counters object also contains a script that runs every second that increments the CountUp UDA from 0 to 999 and decrements the CountDown UDA from 999 to 0.

IAS object configuration is explained.

- This Technote assumes a thorough knowledge of Industrial Application Server (IAS).

## Configuring Industrial Application Server

1. Create a new Galaxy.
2. Create a new instance of a WinPlatform, AppEngine, Area, and a UserDefined object (named Counters).

Arrange them to resemble Figure 1 (below):



FIGURE 1: PLATFORM/ENGINE/AREA/COUNTERS

3. Open the UserDefined object (Counters) and add two UDAs named **CountUp** and **CountDown** with a data type of **Integer**:

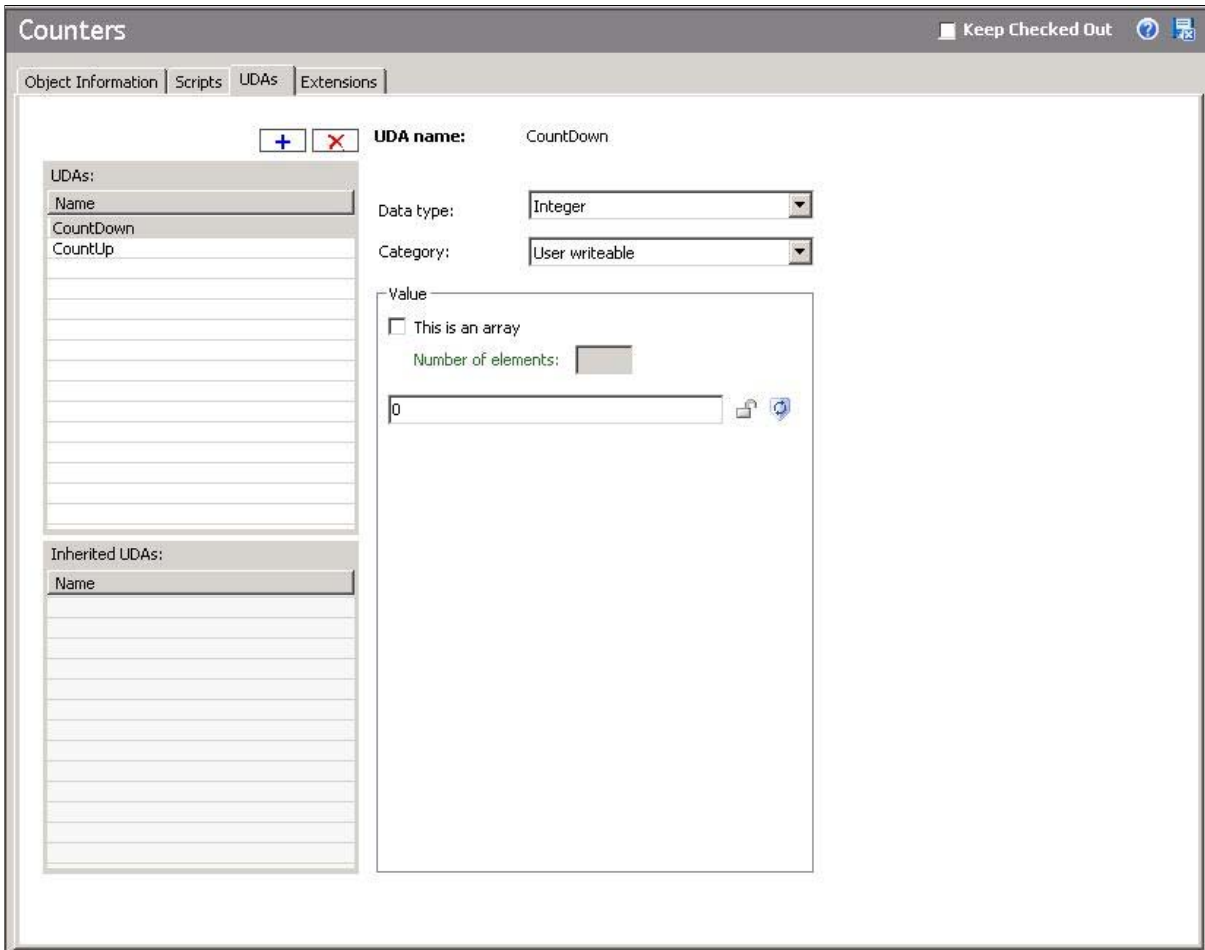


FIGURE 2: COUNTDOWN, COUNTUP UDAs

4. Add a script to the UserDefined object (Counters) named **CountScript**.

This script runs every second and increments the CountUp UDA from 0 to 999 and decrements the CountDown UDA from 999 to 0 (Figure 3 below):

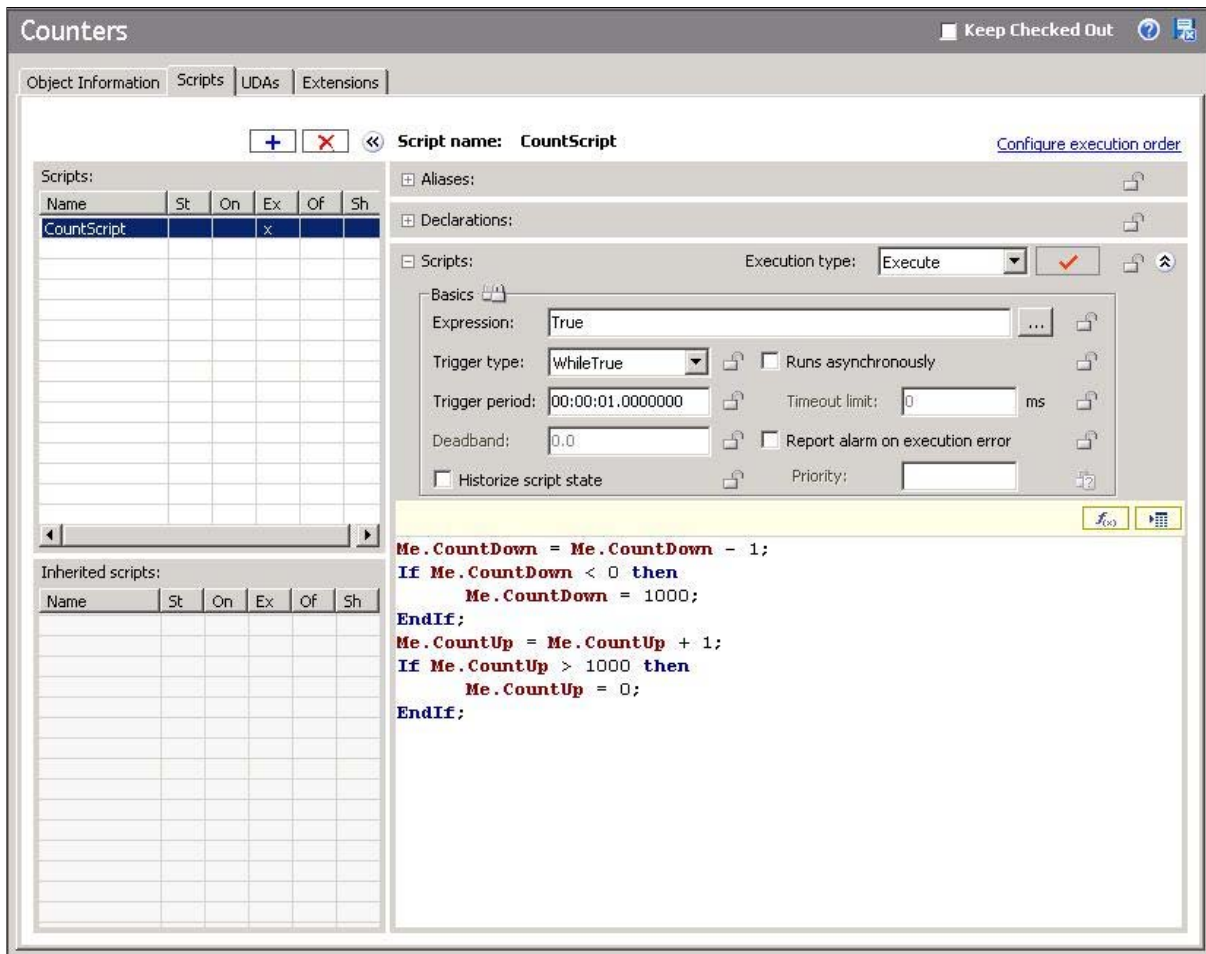


FIGURE 3: COUNTSCRIPT

5. Deploy the Platform, Engine, Area, and Counters objects.

### Configure FSGateway

1. Open the ArcestrA System Management Console (SMC) and locate "Configuration" under "ArcestrA.FSGateway.1" in the DAServer Manager.

2. Right-click **Configuration**, then select **Add ArcestrA Object**.

You can rename the ArcestrA Object at this point. For this example, **ArcestrA** is the ArcestrA Object name.

3. If ArcestrA has security enabled, enter the credentials used to logon to ArcestrA in the Domain, User Name, and Password fields.

For this example, security is not enabled so we will leave the fields empty.

**Note:** The **Domain** field should have a valid domain name when ArcestrA security authentication mode is "OS Users" or "OS Groups". The domain field should be left empty when ArcestrA security authentication mode is "Galaxy".

4. Save the configuration by clicking on the Disk (Save) icon in the upper right corner of the Editor pane:

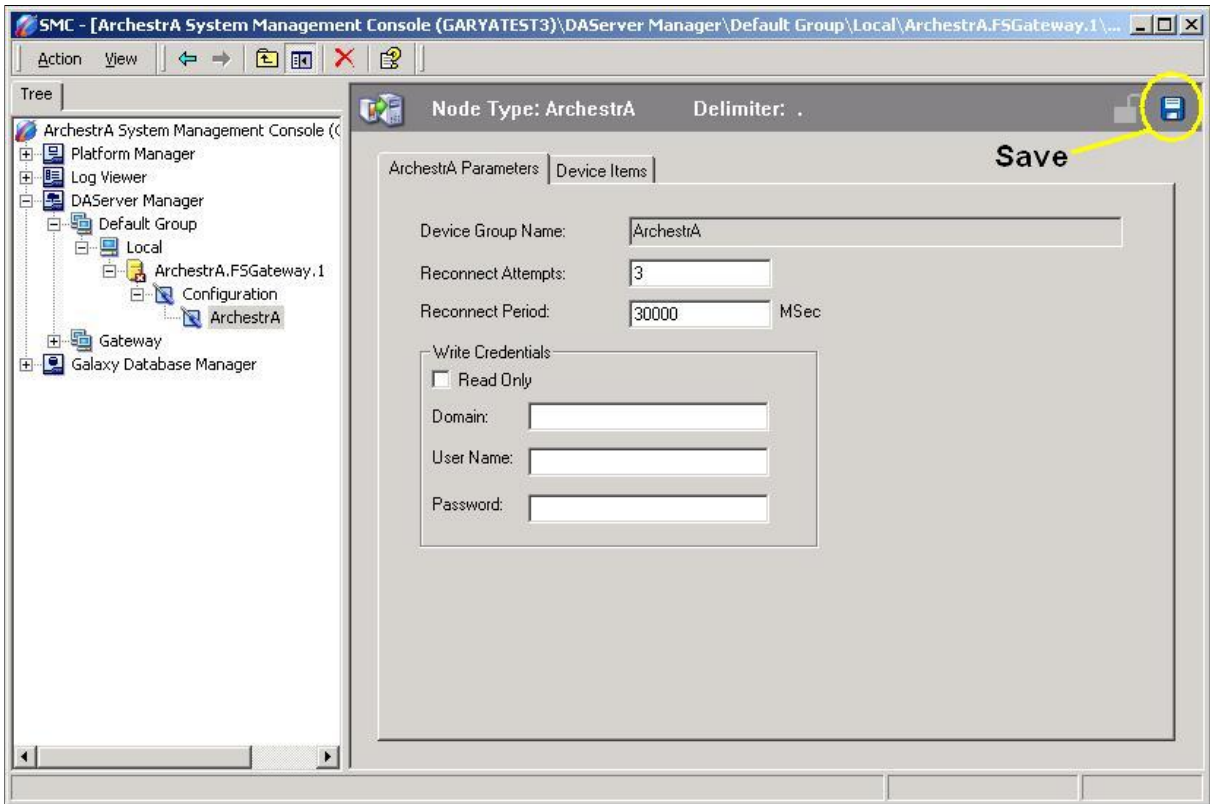


FIGURE 4: SAVE THE OBJECT CONFIGURATION

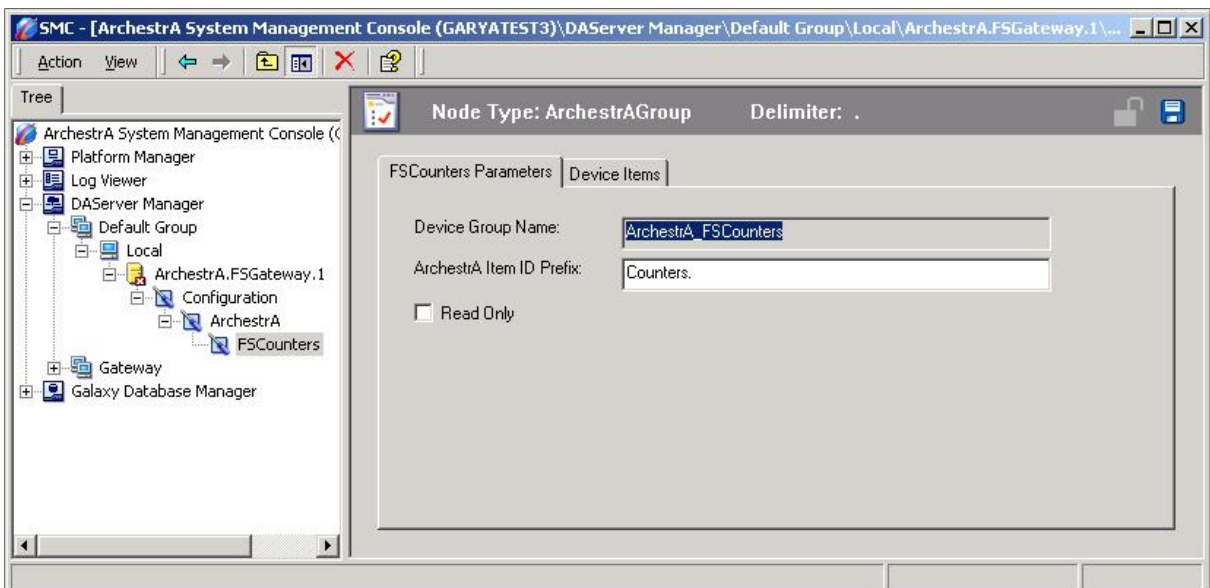
5. Right-click the ArchestrA object and select **Add ArchestrAGroup Object**.

You can rename the ArchestrAGroup object at this point. For this example, **FSCounters** is the ArchestrAGroup object name.

6. Enter the name of the UserDefined object in the **ArchestrA Item ID Prefix** field followed by a period (**Counters.**).

This will allow us to enter just the UDA name in out DDE Client although this technote will also advise the complete item name in one of the examples.

7. Take note of the **Device Group Name** value (**ArchestrA\_FSCounters**). This name will be referenced later when making a DDE connection.
8. Save the configuration by clicking on the Disk (Save) icon in the upper right corner.



**FIGURE 5: SAVE DEVICE GROUP CONFIGURATION**

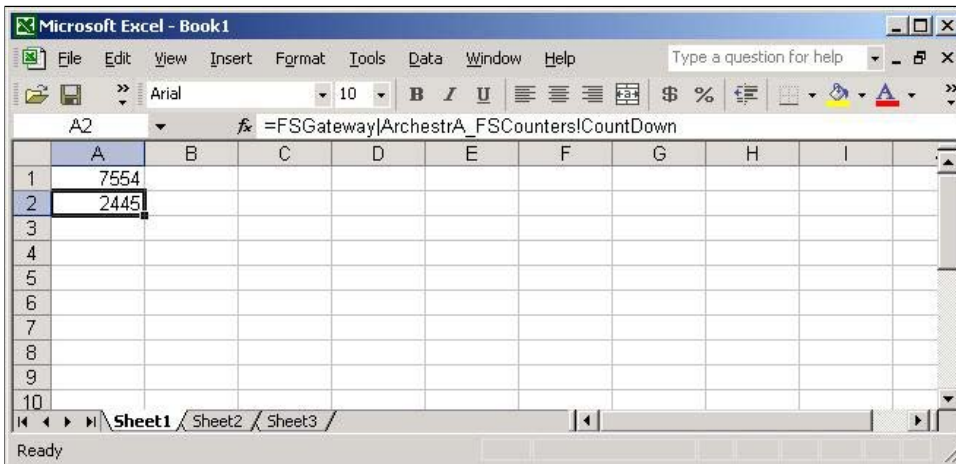
9. Right-click **ArchestrA.FSGateway.1** and select **Activate Server**.

FactorySuite Gateway configuration is now complete.

Test the DDE Connection to the ArchestrA Data Source

1. Launch Microsoft Excel.
2. Enter **=FSGateway|ArchestrA\_FSCounters!CountUp** in cell A1.
3. Enter **=FSGateway|ArchestrA\_FSCounters!CountDown** in cell A2.
4. You should now see counter values in both cell fields.

**Note:** Because we are advising items in the ArchestrA\_FSCounters device group and we entered an ArchestrA Item ID Prefix that points to the Counters object in IAS, we are limited to only items in the Counters object.

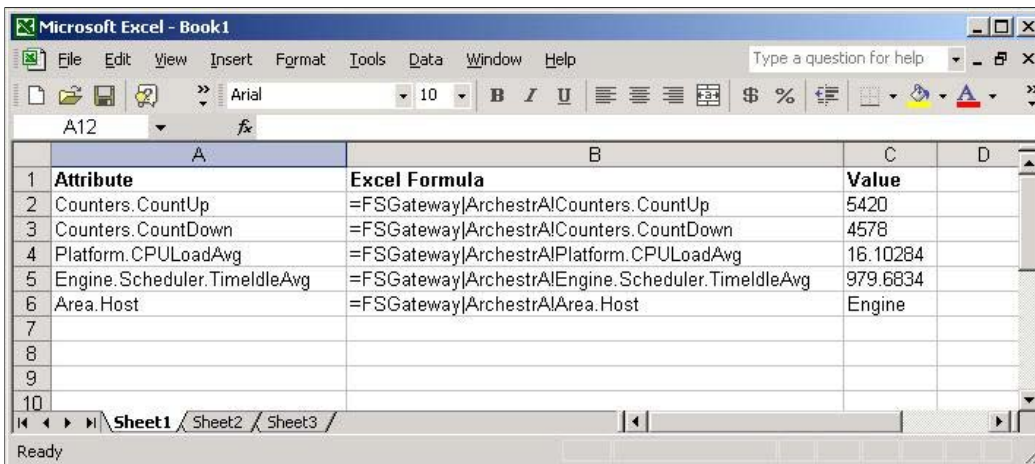


**FIGURE 6: COUNTER VALUES IN EXCEL**

We can also obtain data by making a DDE connection directly to the FactorySuite Gateway ArchestrA object.

5. Enter **=FSGateway|ArchestrA!Counters.CountUp** in cell A2 and enter **=FSGateway|ArchestrA!Counters.CountDown** in cell A3.

This type of connection will not limit you to the Counters object. For example, you could also advise other attributes such as average CPU load, Scheduler Average Idle Time, and Area Host Name:



**FIGURE 7: ADVISE OTHER ATTRIBUTES**

G. Allredge

Tech Notes are published occasionally by Wonderware Technical Support. Publisher: Invensys Systems, Inc., 26561 Rancho Parkway South, Lake Forest, CA 92630.

There is also technical information on our software products at [Wonderware Technical Support](#)

For technical support questions, send an e-mail to [support@wonderware.com](mailto:support@wonderware.com).

 [back to top](#)

©2010 Invensys Systems, Inc. All rights reserved. No part of the material protected by this copyright may be reproduced or utilized in any form or by any means, electronic or mechanical, including photocopying, recording, broadcasting, or by any information storage and retrieval system, without permission in writing from Invensys Systems, Inc. [Terms of Use](#).