

All Tech Notes and KBCD documents and software are provided "as is" without warranty of any kind. See the [Terms of Use](#) for more information.

Topic#: 002073
Created: February 2005
Updated: June 2010

Introduction

This technote provides the necessary steps to configure FSGateway to use InTouch as a data source. InTouch clients can then access Suitelink, DDE, and OPC data from FSGateway.

Before you Begin

- **Download and Install FSGateway** from the Wonderware Developer Network's **Device Integration** Downloads section. If you have trouble accessing the WDN, contact **Wonderware Support**.
- Review the documentation for supported operating systems, hardware requirements and known issues.

Configure FSGateway's InTouch Object

1. Open the SMC (**Start/Programs/Wonderware/SMC** [System Management Console]).
2. Expand the **DAServer Manager** and **Archestra.FSGateway.1** items.

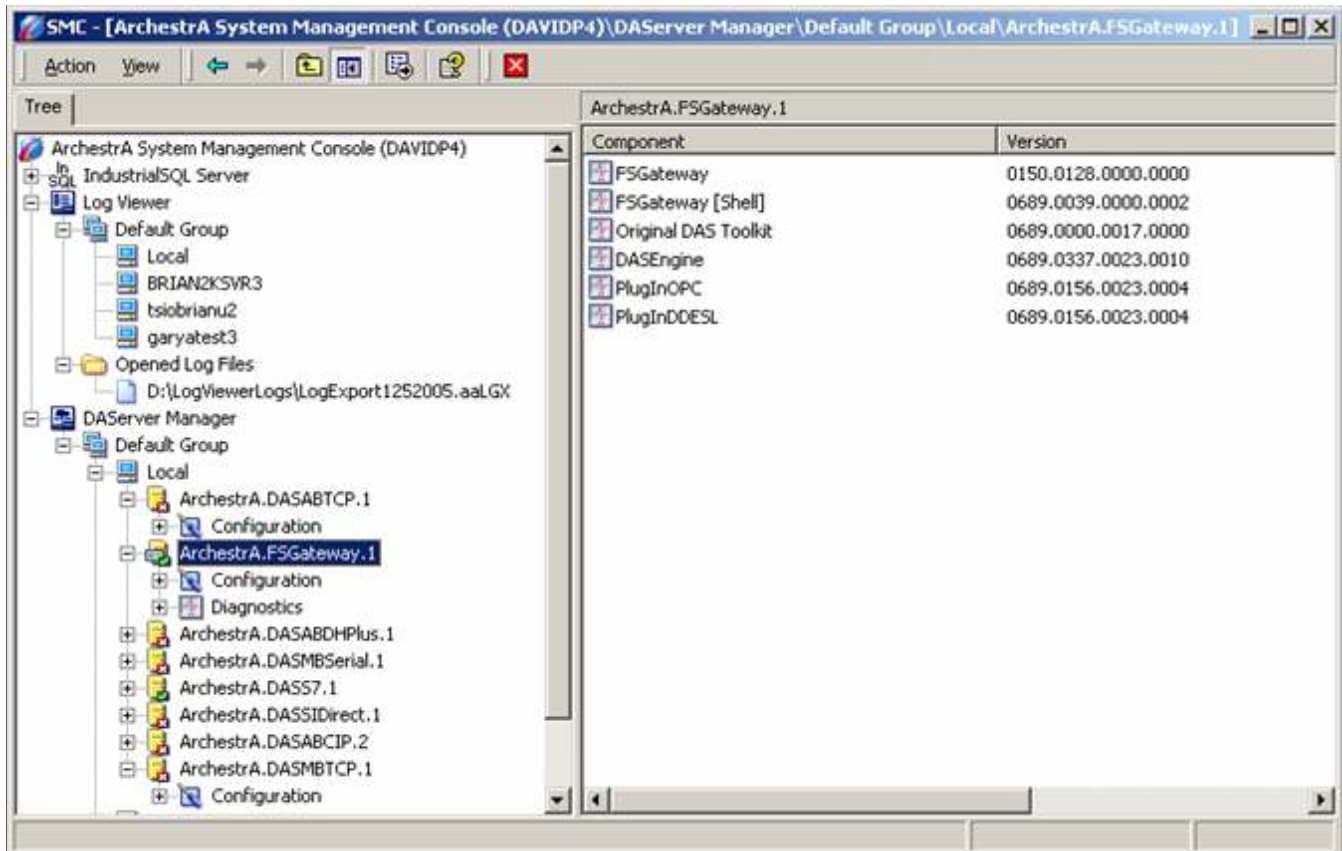


FIGURE 1: ARCHESTRA.FSGATEWAY.1

3. Highlight **Configuration**, and right-click to add a new "InTouch" Object.
4. Right-click **New_InTouch_000** to rename it.

In this example, we will use **ITTest** (Figure 2 below):

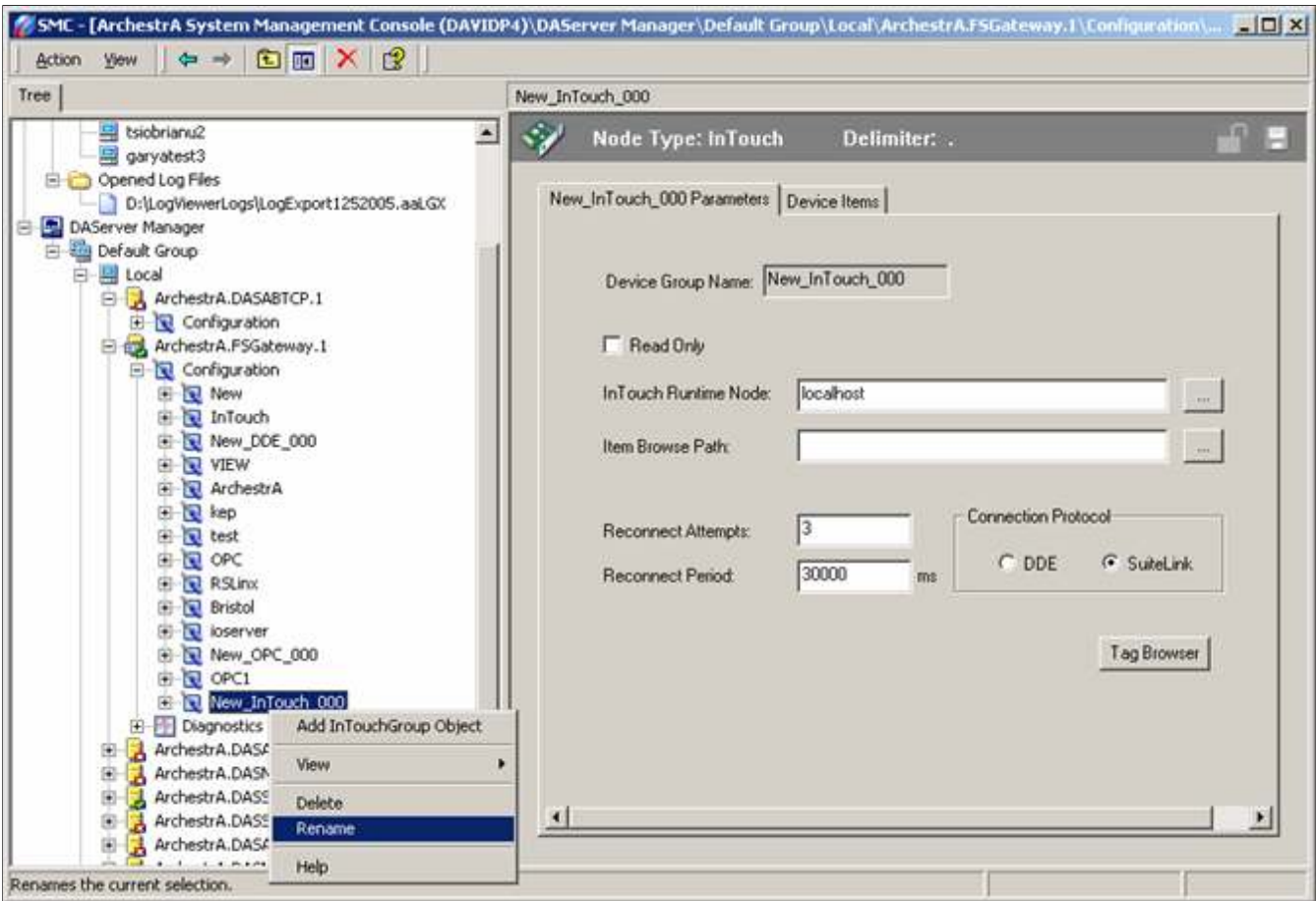


FIGURE 2: RENAME OBJECT

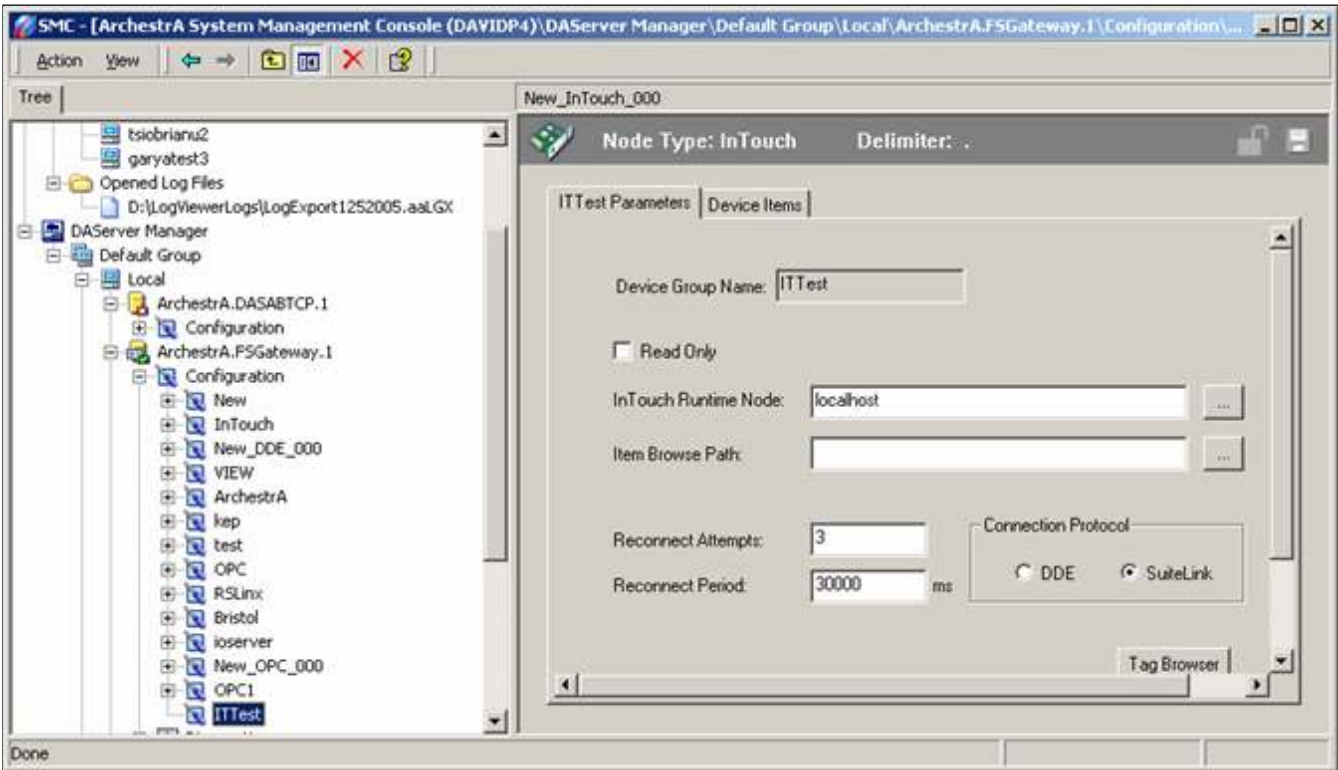


FIGURE 3: ITTEST

5. Click the Elipsis (...) button to the right of the **Item Browse Path** field to browse to the InTouch database on your hard drive.
6. When you find it, click **OK**. See Figure 4 (below):

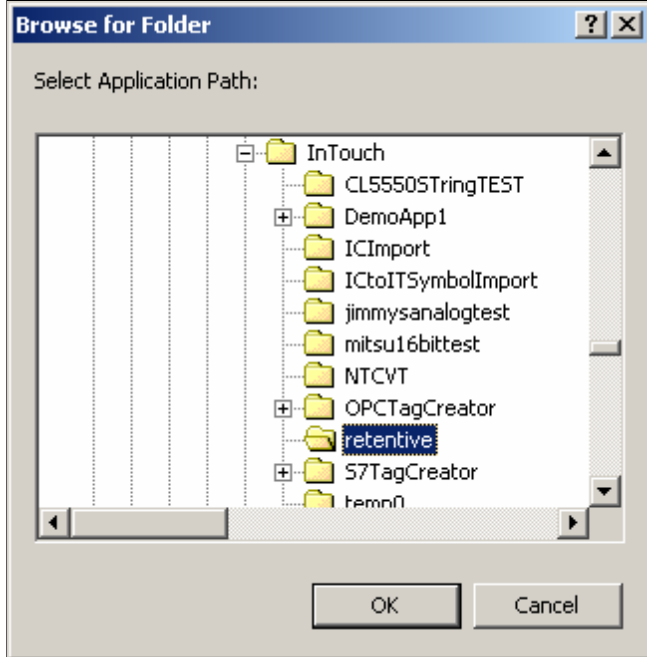


FIGURE 4: BROWSE FOR FOLDER DIALOG BOX

The path appears in the **Item Browse Path** field automatically. See Figure 5 (below):

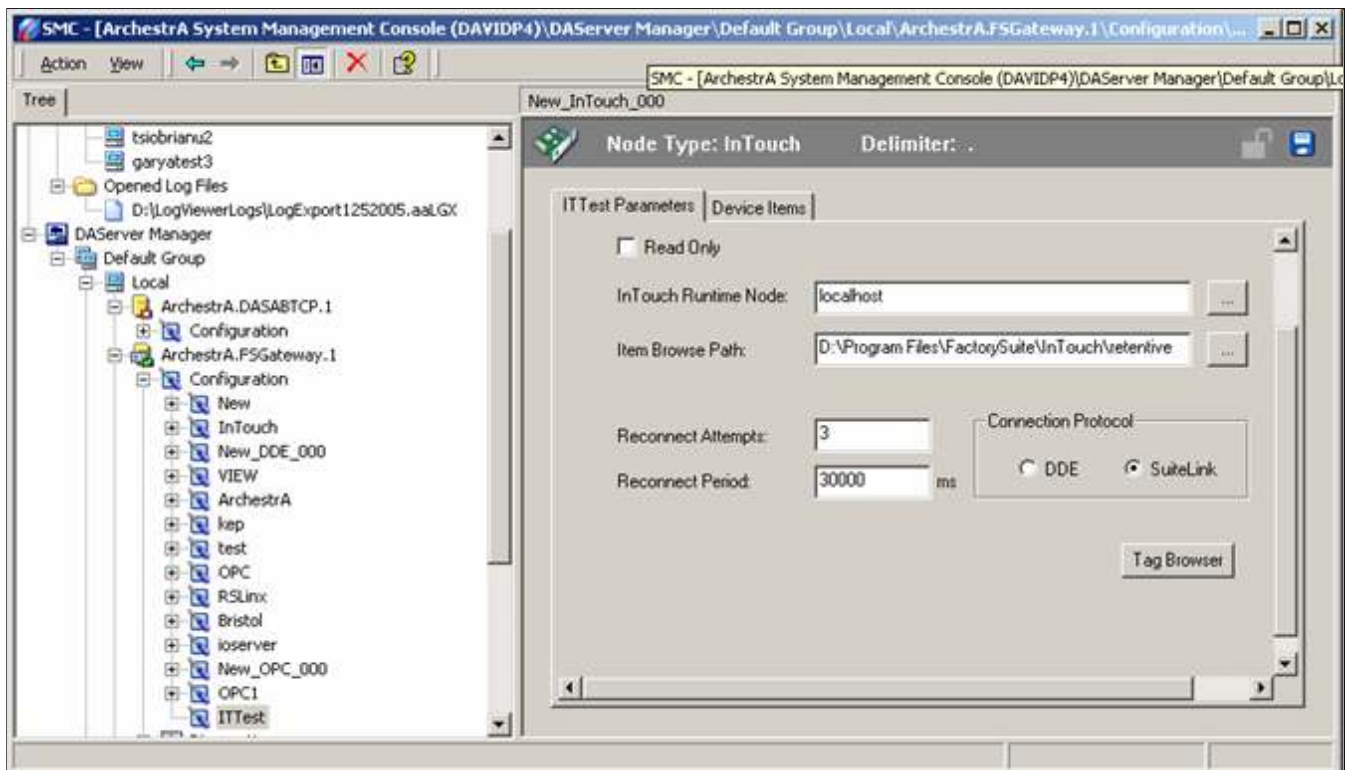


FIGURE 5: ITEM BROWSE PATH

Note: You can choose Suitelink or DDE for the communication protocol from FSGateway to InTouch. For this example, **SuiteLink** is chosen.

You should be able to click the **Tag Browser** button to launch the InTouch Tag Browser and see all your tags (Figure 6 below):

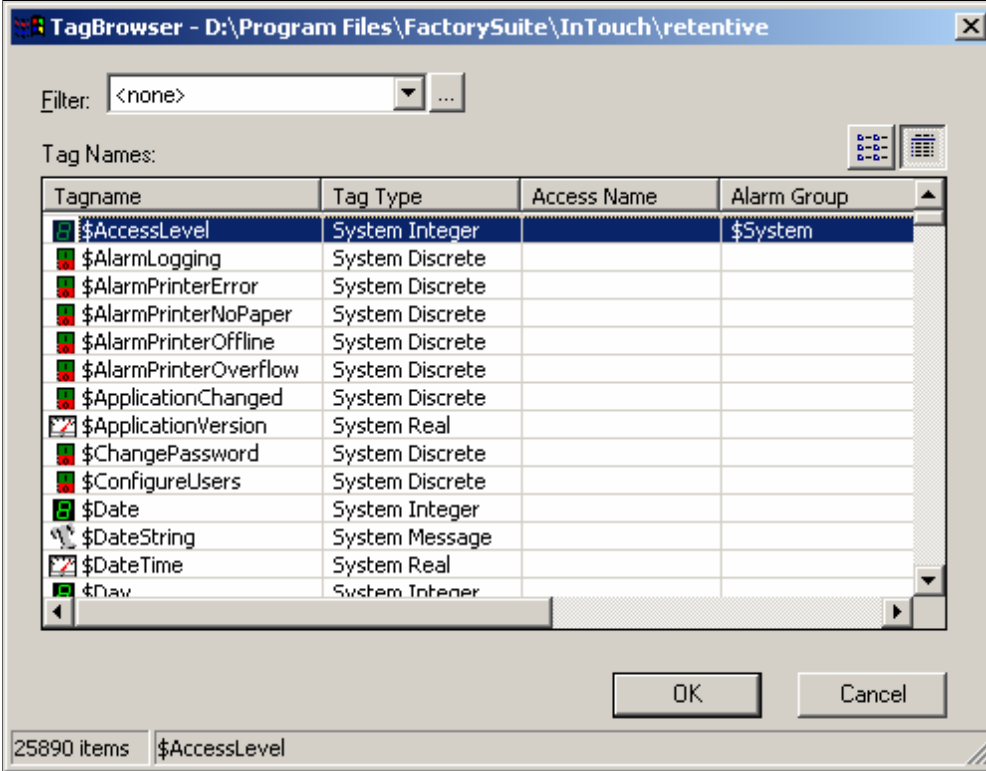


FIGURE 6: TAG BROWSER

If you want to add any of the tags to the Device Items list, select them, and click **OK** to close the InTouch Tag Browser.

7. Click the Disk (Save) icon in the upper-right hand corner of the ITTest window to save your settings.

Run a Test with WWClient

1. Launch WWClient and select **Connections/Create** (from the main menu) to create a new connection to FSGateway (Figure 7 below):

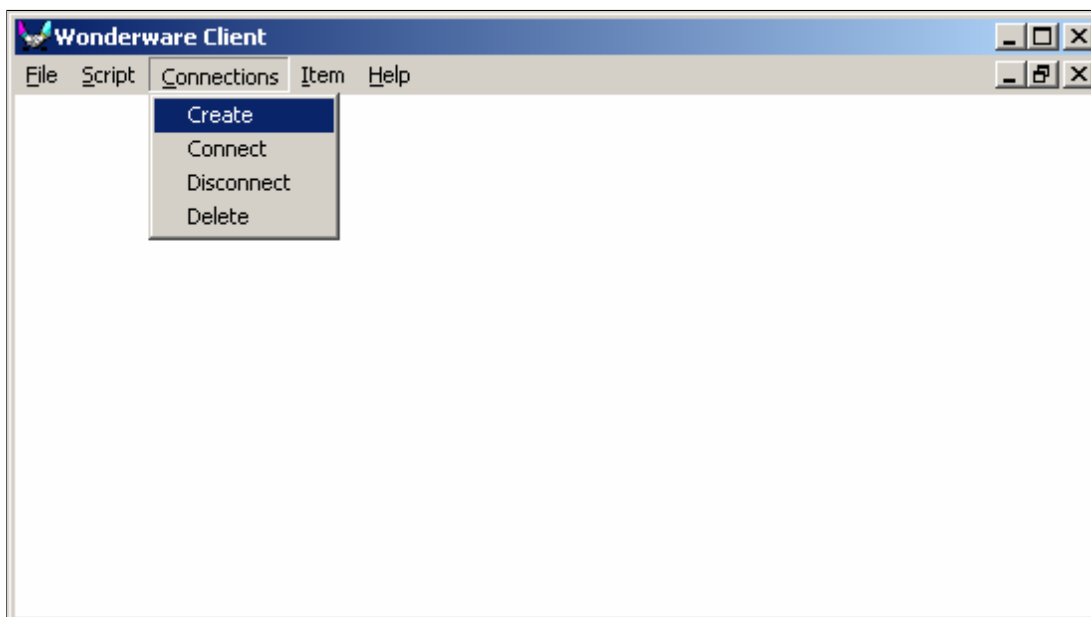


FIGURE 7: CONNECTIONS/CREATE

2. Enter **FSGateway** for the application name, and **ITTest** as the topic.
3. Select either DDE or IOT Connection Type.

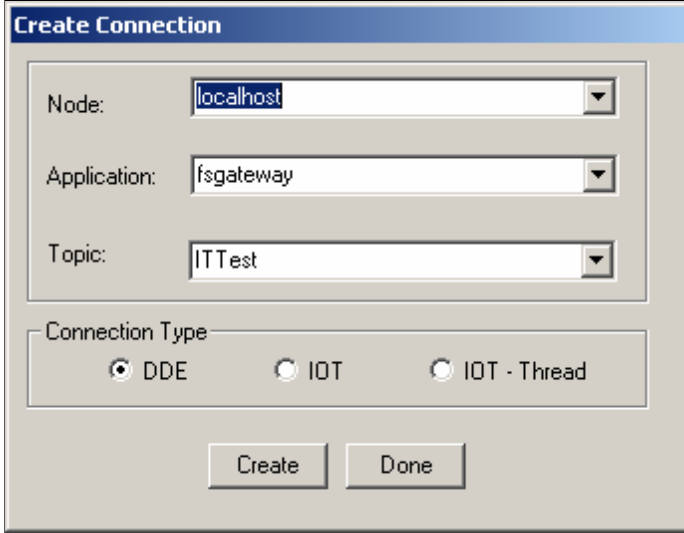


FIGURE 8: CREATE CONNECTION

4. Click **Create**, then **Done**.
5. Select **Item** from the WWClient menu to add an item.
6. Enter **\$second** in the **Item** field to verify that FSGateway can see InTouch and access a tag successfully.
7. Click **AdviseEX**, then **Done** (Figure 9 below):

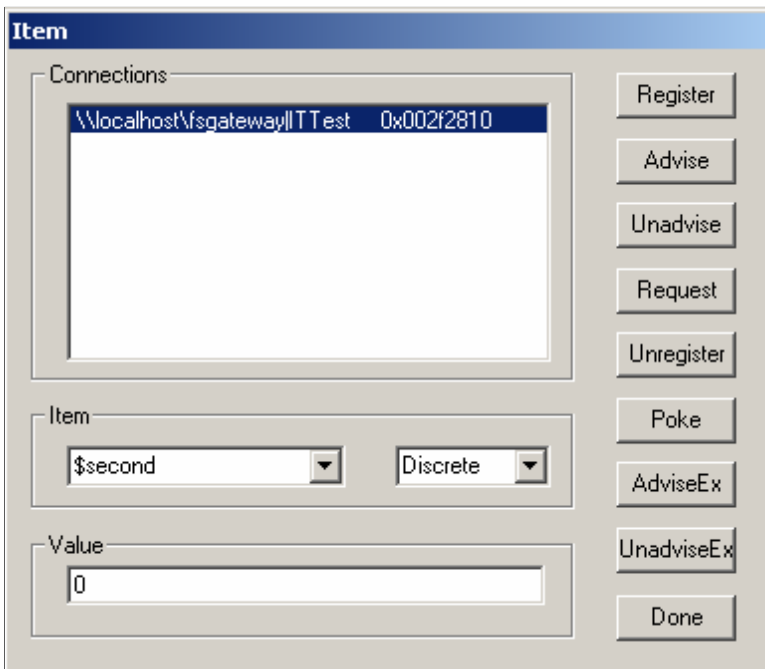


FIGURE 9: ITEM DIALOG BOX

Note: Make sure WindowViewer is running first.

If you see the seconds counting in the WWClient window, the configuration of FSGateway is complete, and you are done.

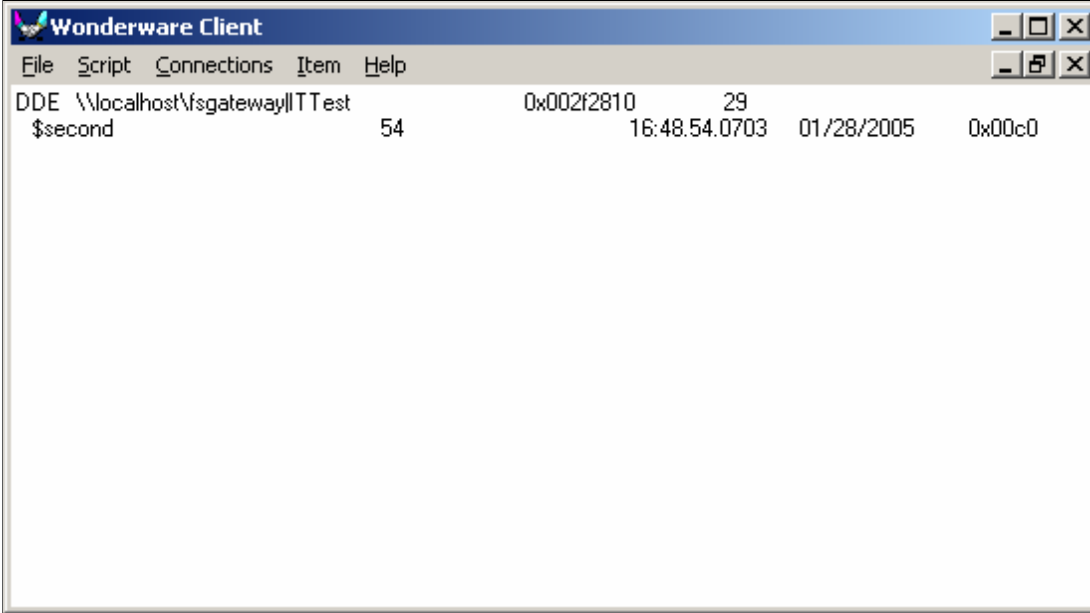


FIGURE 10: SUCCESSFUL FSGATEWAY CONFIGURATION

D. Plesset

Tech Notes are published occasionally by Wonderware Technical Support. Publisher: Invensys Systems, Inc., 26561 Rancho Parkway South, Lake Forest, CA 92630. There is also technical information on our software products at [Wonderware Technical Support](#)

For technical support questions, send an e-mail to support@wonderware.com.

 [back to top](#)

©2011 Invensys Systems, Inc. All rights reserved. No part of the material protected by this copyright may be reproduced or utilized in any form or by any means, electronic or mechanical, including photocopying, recording, broadcasting, or by any information storage and retrieval system, without permission in writing from Invensys Systems, Inc. [Terms of Use](#).