

Tech Note 485

Installing Arcestra License Server

All Tech Notes and KBCD documents and software are provided "as is" without warranty of any kind. See the [Terms of Use](#) for more information.

Topic#: 002207

Created: June 2007

Introduction

This *Tech Note* explains the Arcestra License Server installation and configuration procedure.

Application Versions

Wonderware products that utilize Arcestra License Server. For example, ActiveFactory 9.2, Wonderware Information Server 3.0.

Wonderware License Files Overview

As of February 2007 there are 3 types of license files in the new Wonderware licensing system:

- **WWSuite.lic:** License file for older versions of Wonderware FactorySuite 2000 and FactorySuite A2 generation products. This includes InTouch® 9.5, InBatch 8.0, InSQL 9.0, installed on the local system.
- **Arcestra.lic:** New license file for new versions of Wonderware products starting with Active Factory 9.2 and Wonderware Information Server 3.0 **Per Device**, installed on the local system.
- **ArcestraServer.lic:** New license file installed on computer selected as the license server. Includes the license for ActiveFactory 9.2 and Wonderware Information Server 3.0 - **Concurrent**, **Named Device** or **Named User**.

Arcestra License Manager Installation

You can find Archestra License Manager installation files on the Wonderware ActiveFactory 9.2 installation CD and the Wonderware Information Server 3.0 installation CD. They are located in the **License Server** folder.

1. Run **Setup.exe** to begin the installation of Archestra License Server. The the following splash screen appears:



Figure 1: License Server Splash Screen

2. Click **Next**, then select the default settings throughout the installation process.

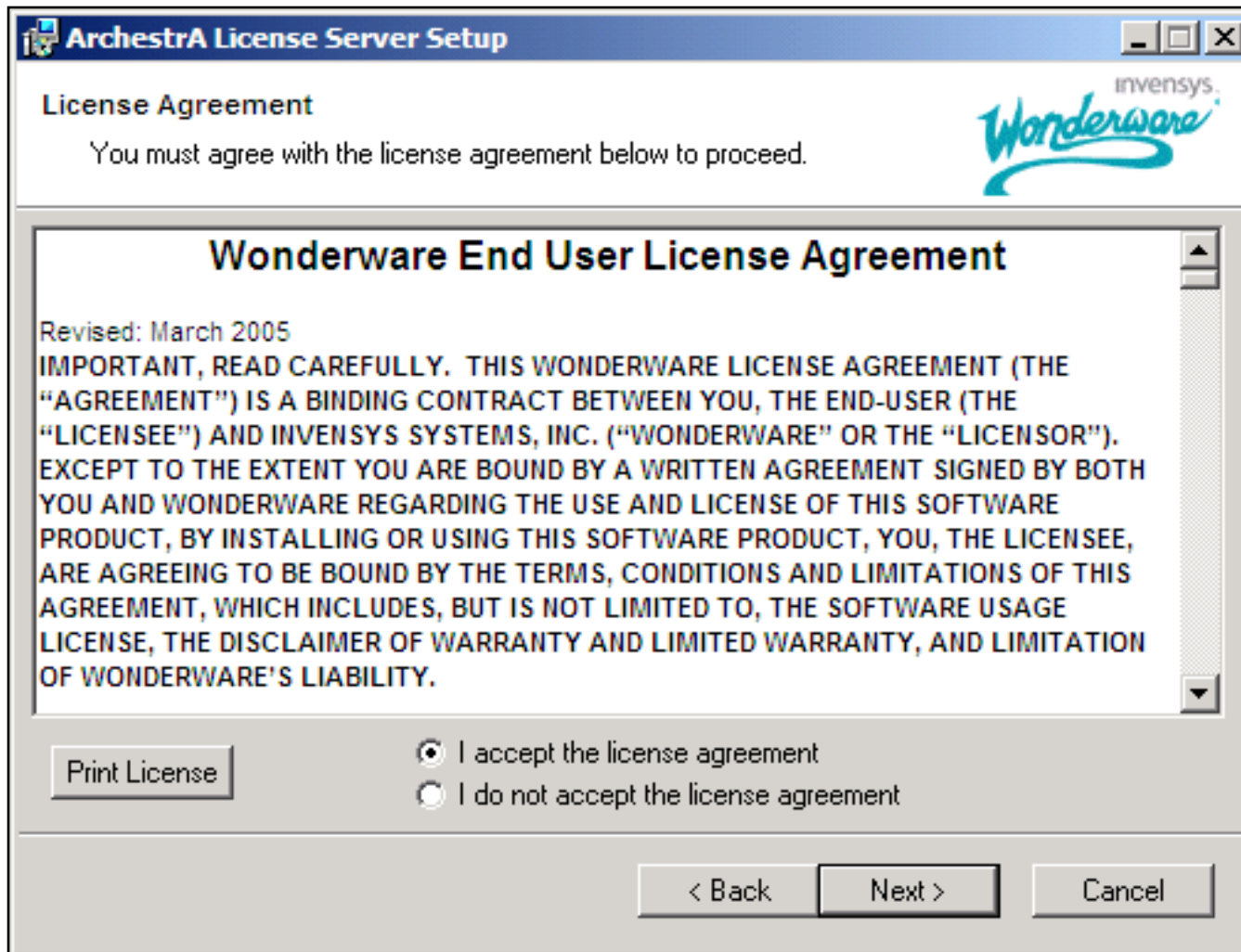


Figure 2: Wonderware End User License Agreement

3. Click **Next**.

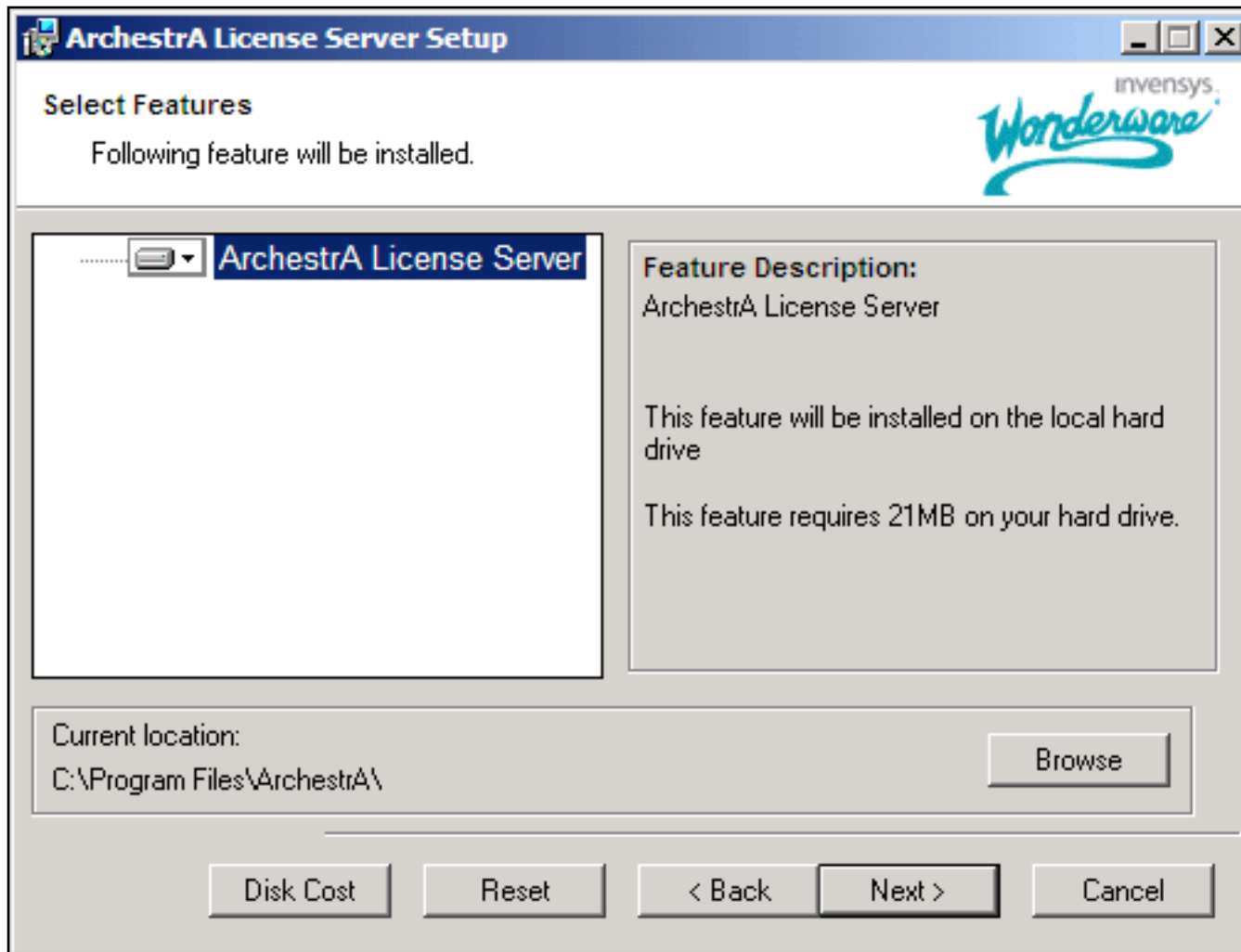


Figure 3: Select Features Wizard

4. Click **Next**.

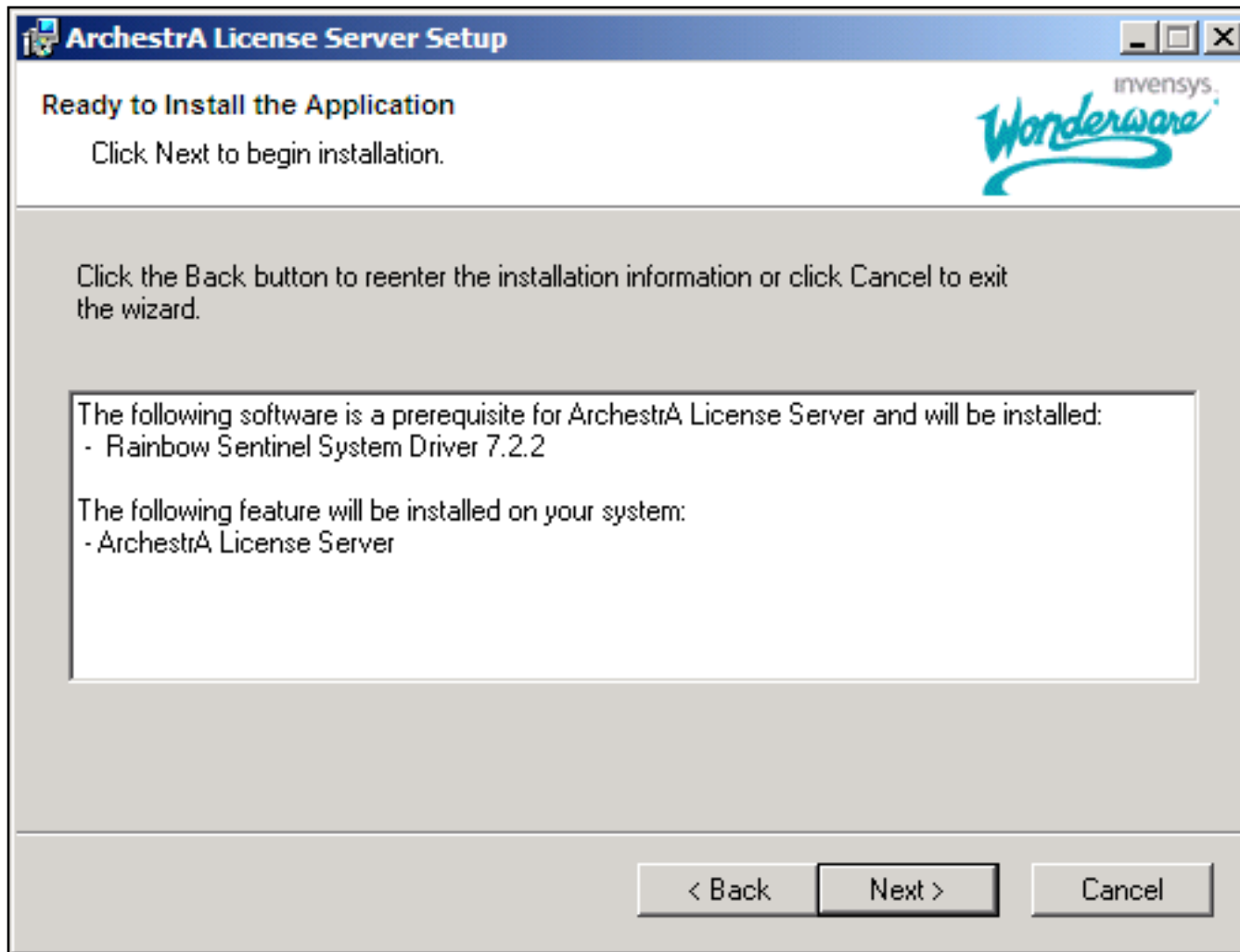


Figure 4: Ready to Install

5. Click **Next**. When the installation process is complete, the **Success** message appears (Figure 5 below).

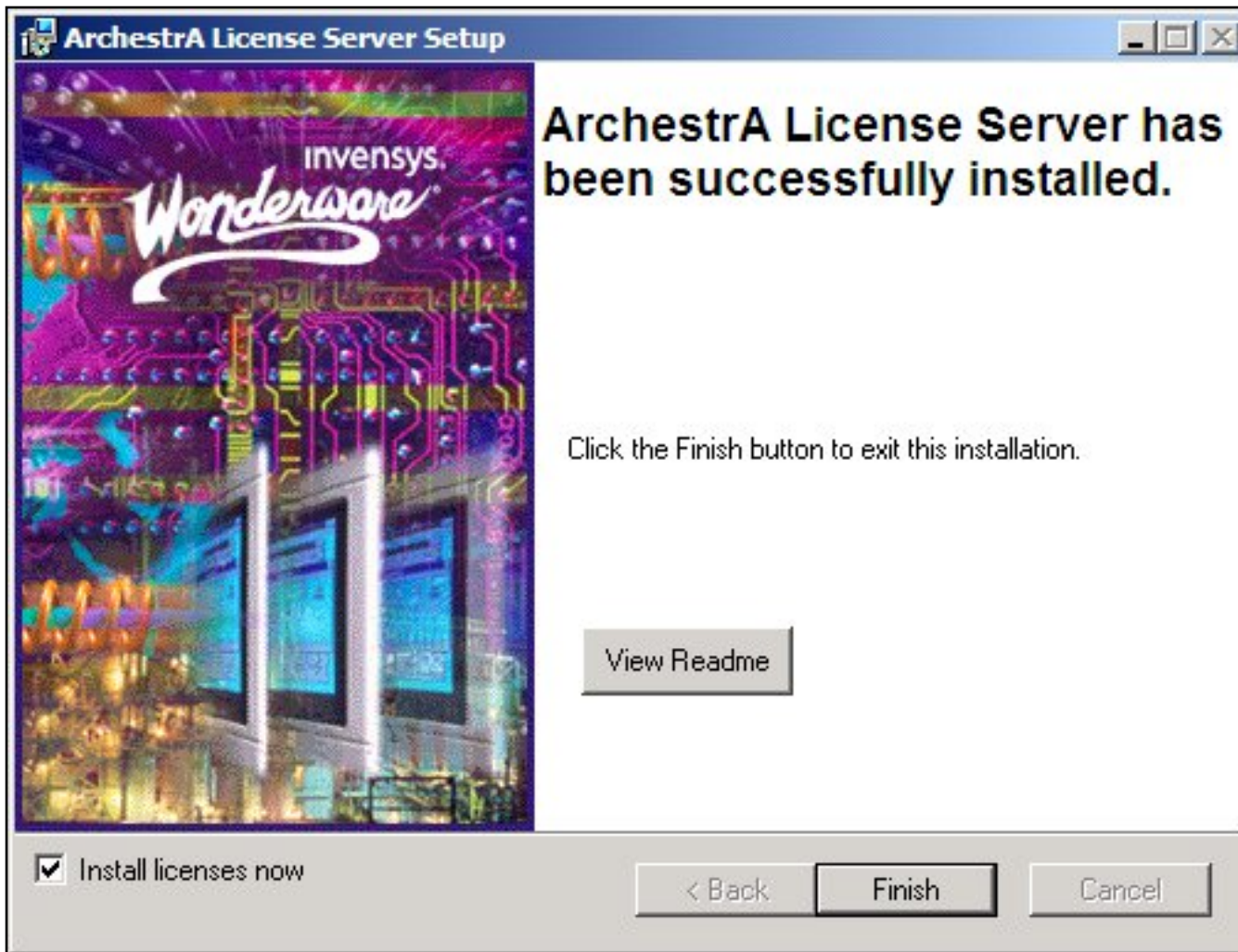


Figure 5: Successful Installation

6. Click **Finish**. The ArchestraA License Manager main window appears with the available license files.

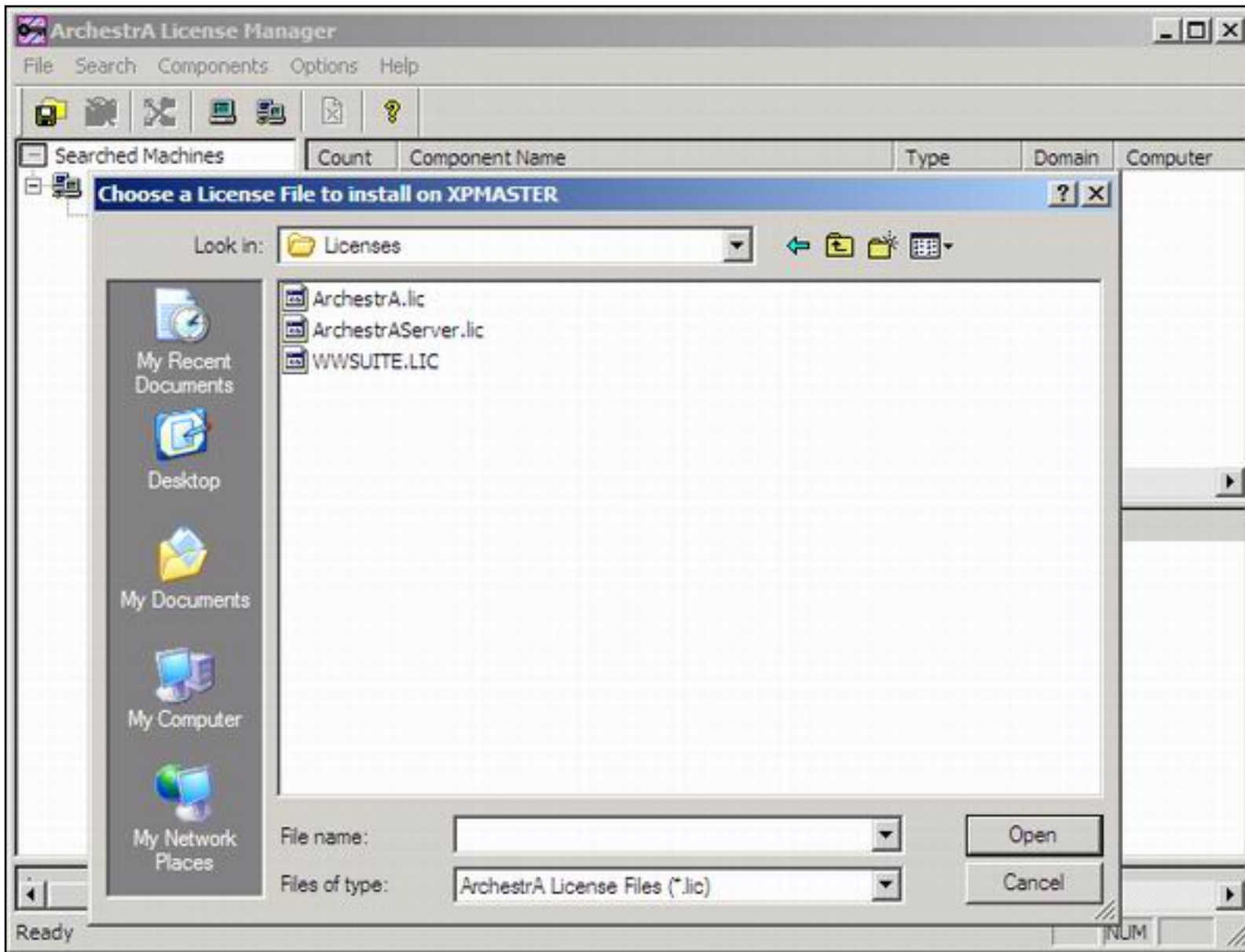


Figure 6: Choose a License File to Install

If the **Choose a License File** window does not appear, click **File/Install License File** from the ArchestrA License Manager main menu (Figure 7 below).

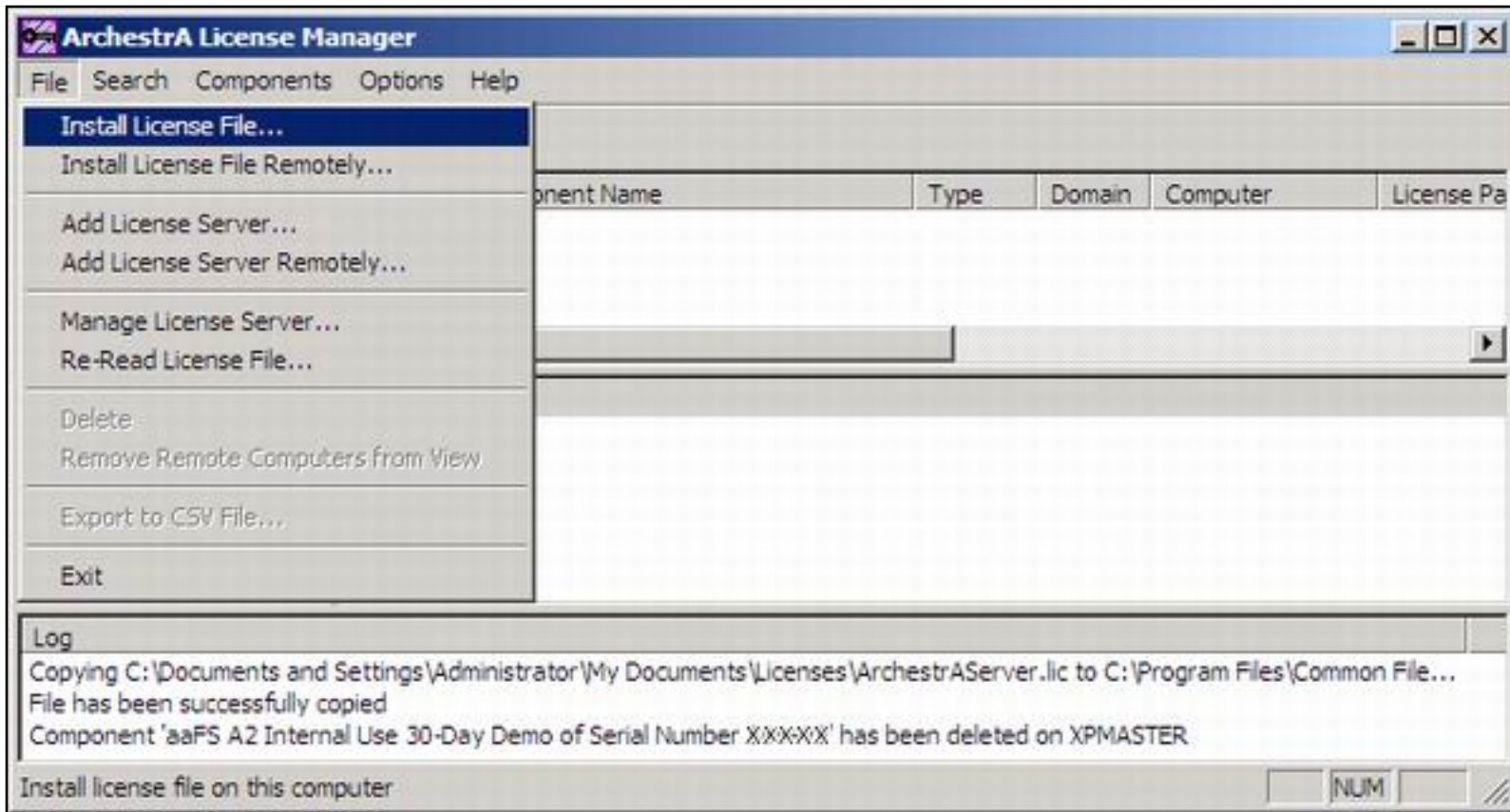


Figure 7: File/Install License File

Installing WWSuite.lic and Arcestra.lic Local License Files

The installation procedure for WWSuite.lic and Arcestra.lic license files is similar to the procedure used in the License Utility (previous version of Arcestra License Manager).

- Click **File/Install License File** from the main menu, and select the appropriate license file.

Local License files selected by the user will be saved inside License Files folder under the name **Local**. The following figure shows correctly installed local licenses.

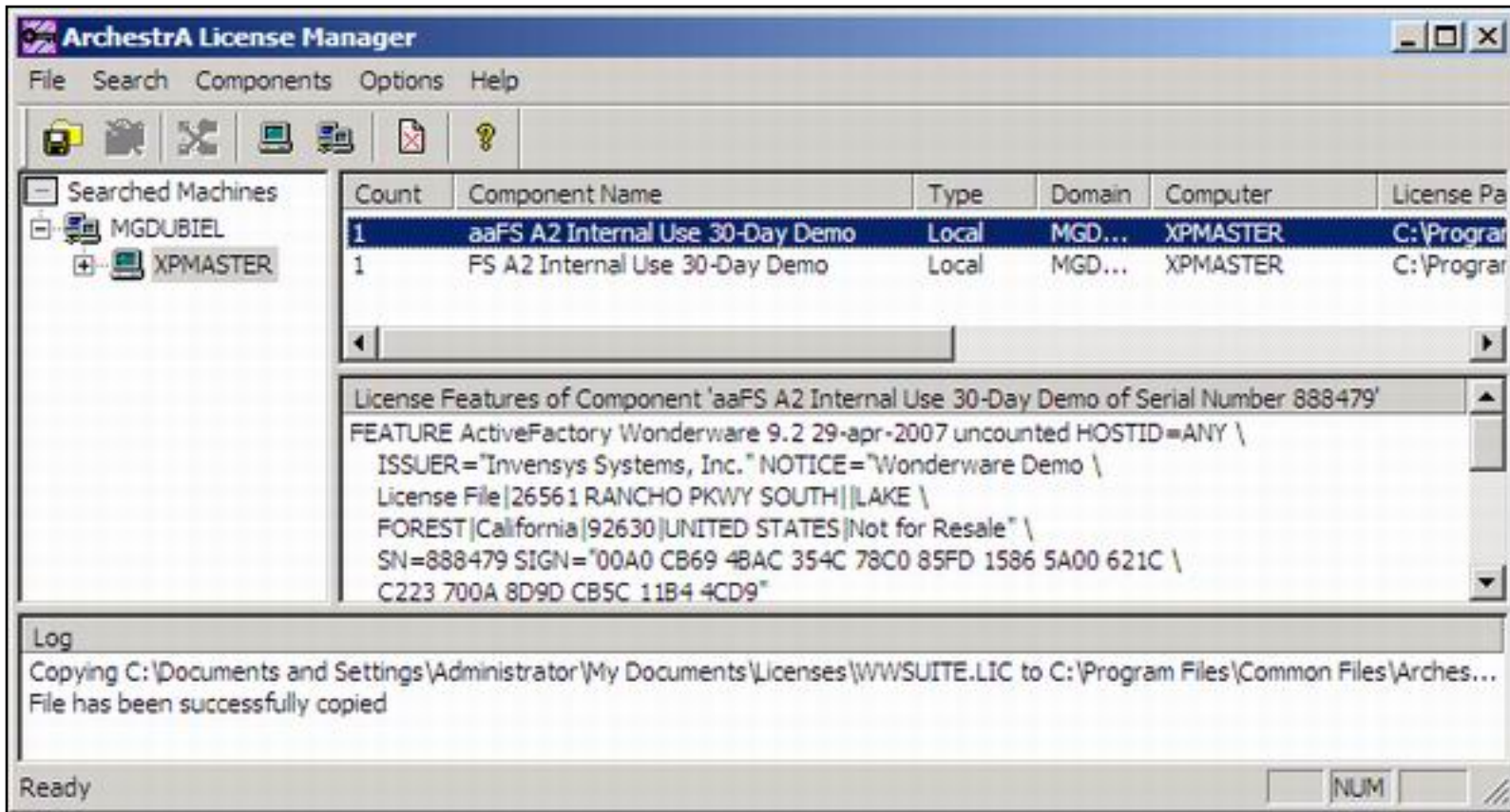


Figure 8: Correct License Files

If both local license files (WWSuite.Lic and Arcestra.Lic) are selected for installation, they will appear in the Arcestra License Manager Components window in the following order: Arcestra.Lic first, WWSuite.Lic second.

The Results window displays the feature lines for the license component that is selected in the Components window.

Installing the ArcestraServer.lic License File

To install ArcestraServer.lic license file on the license server using the Arcestra License Manager utility:

1. Select the **Install License File** option from the File menu.
2. Locate and select **ArcestraServer.lic** license file and click **Open**.

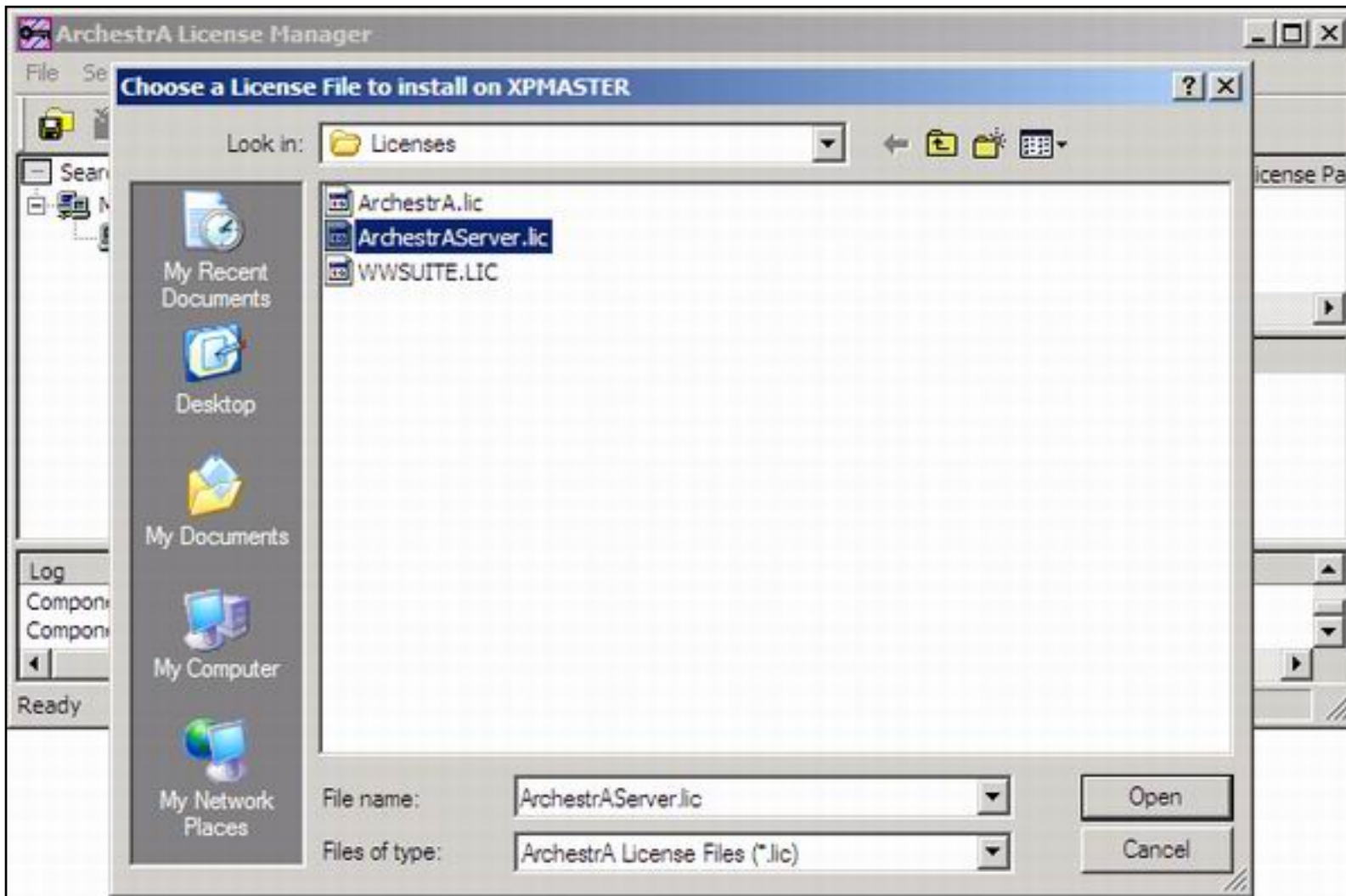


Figure 9: ArchestrAServer.lic File

The **Configure Named User/Device Licenses** window appears.

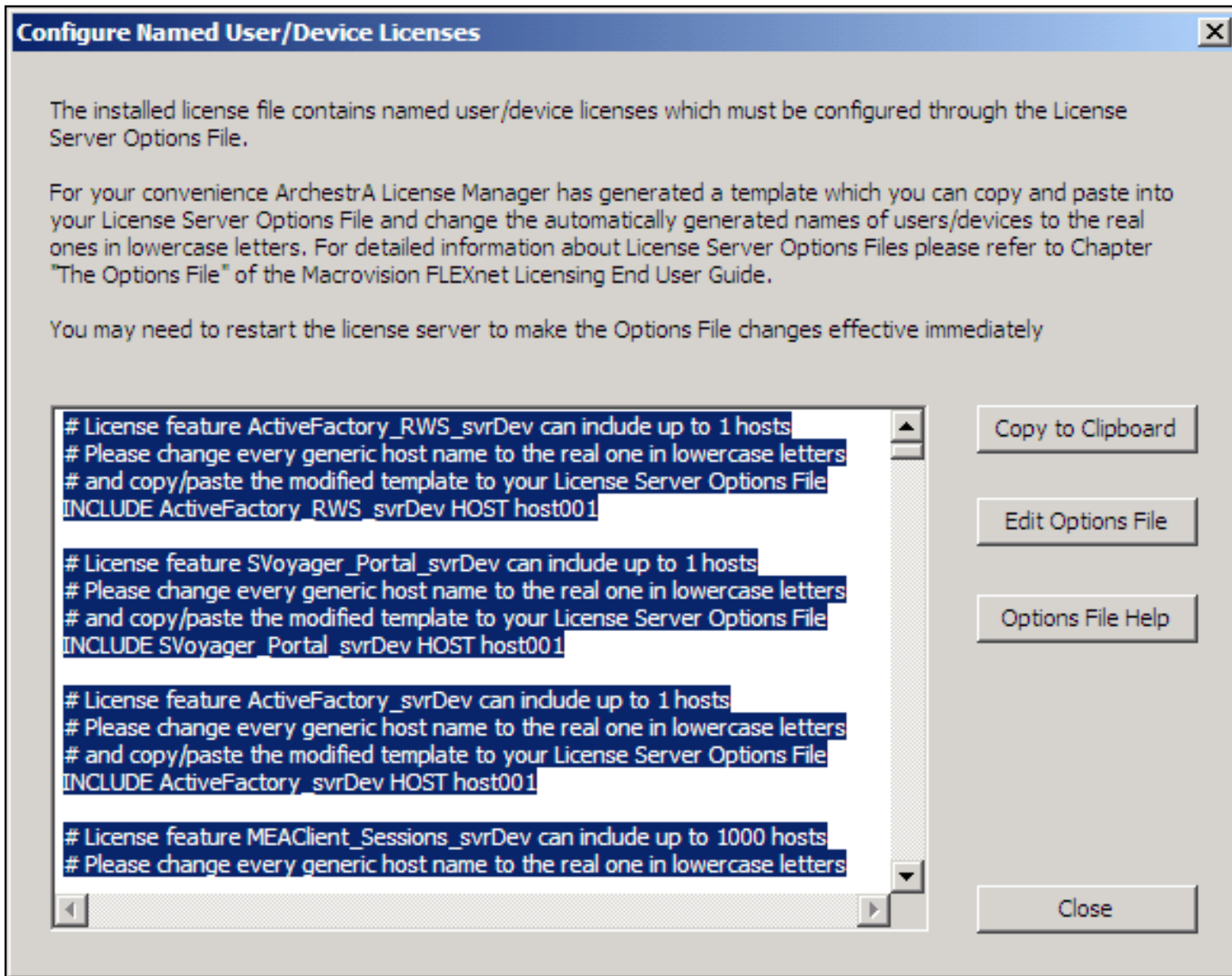


Figure 10: Configure Named User/Device Licenses Window

3. Click the **Copy to Clipboard** button and then the **Edit Options File** button. This opens the license server options file in Notepad. The file is called **Wonderware.opt** (Figure 11 below).

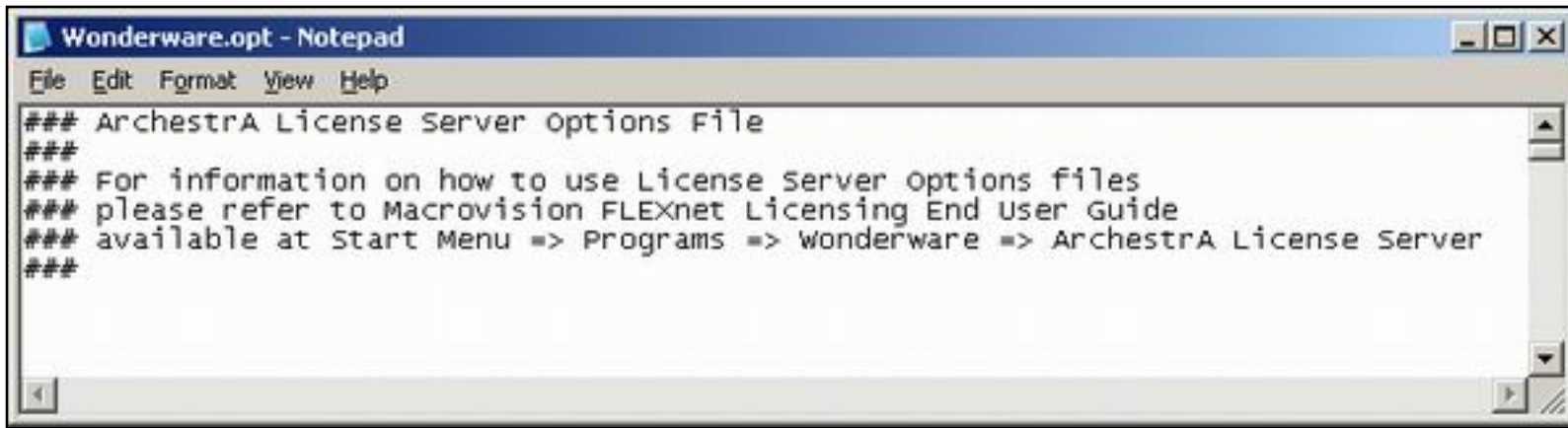


Figure 11: Wonderware.opt File

4. To insert the previously-copied text into the Wonderware.opt file, select Edit/Paste or press the **CTRL+V** keys.

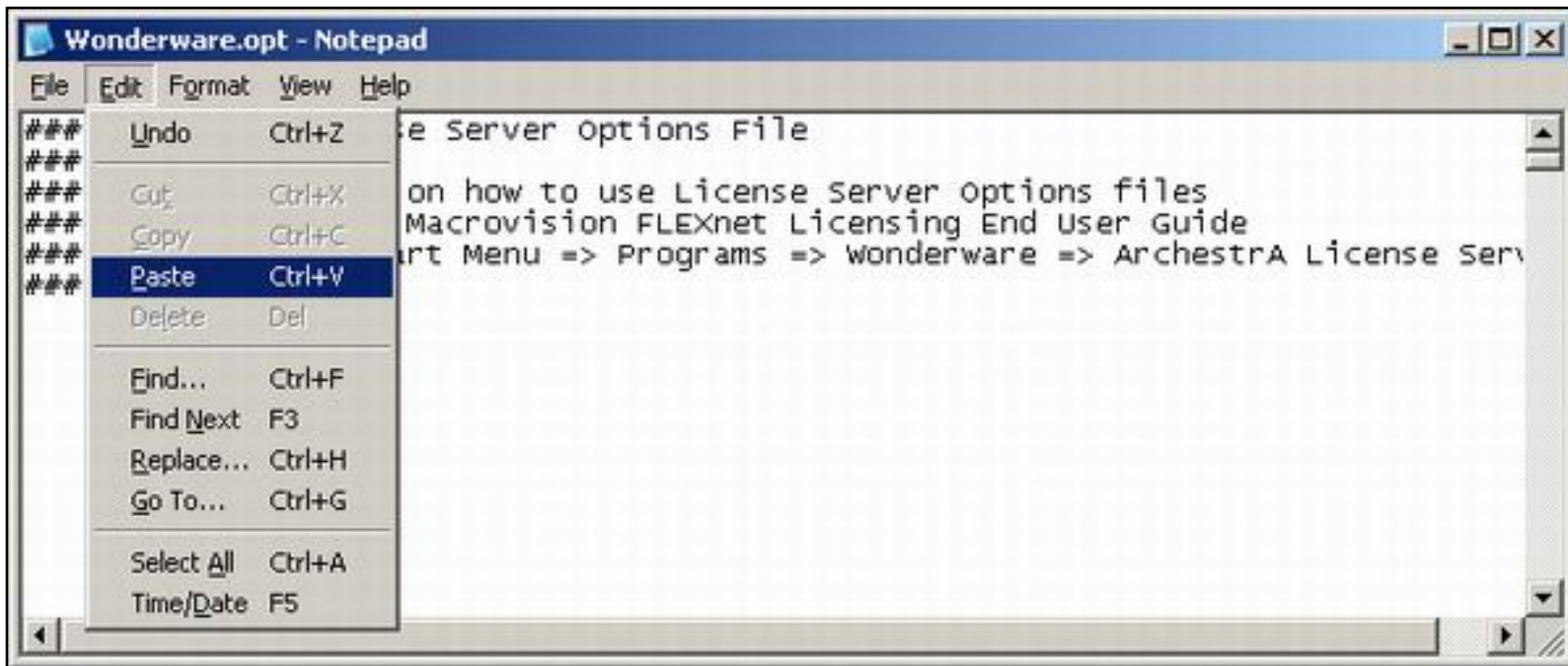
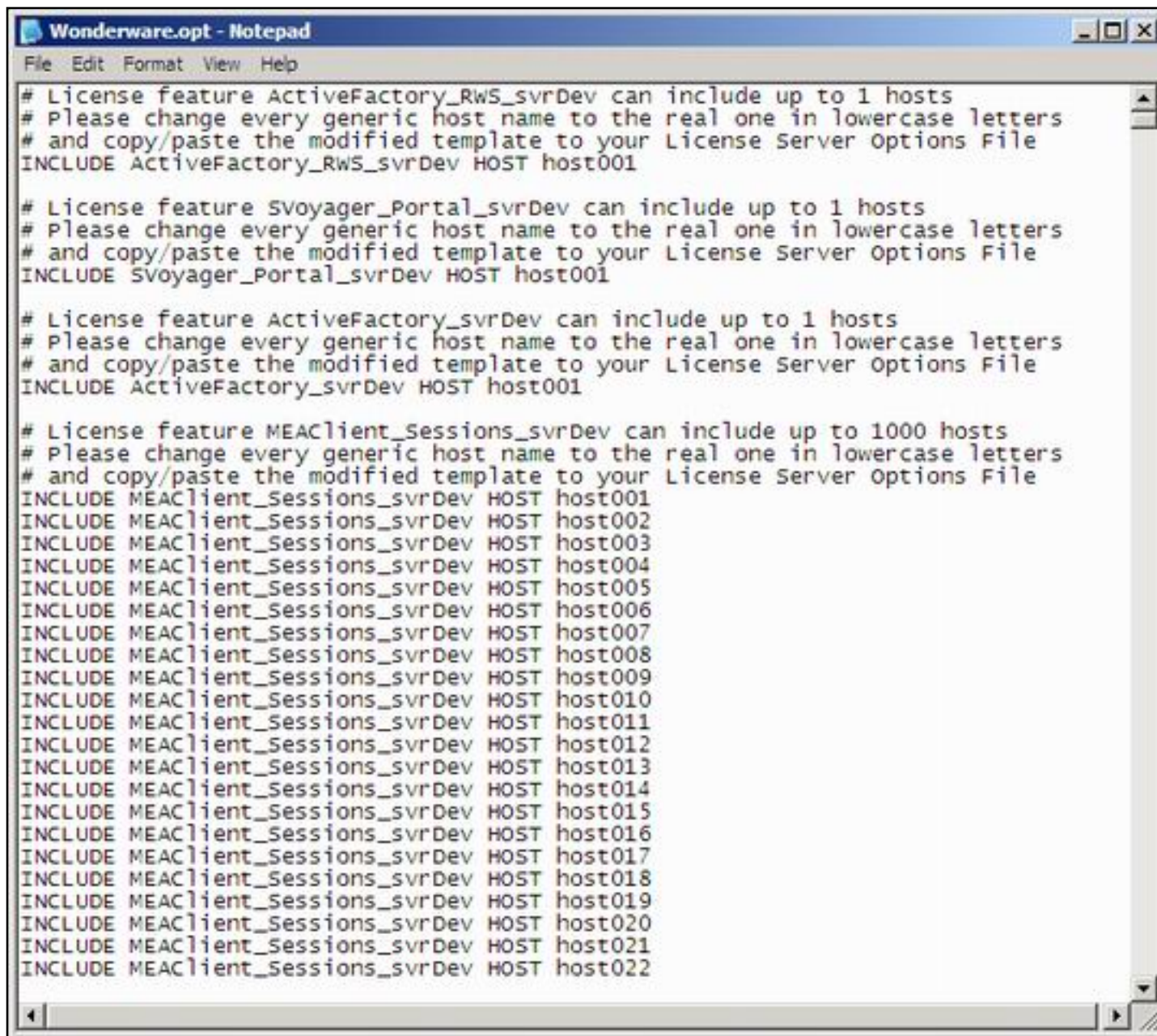


Figure 12: Copy/Paste Operation

The **Wonderware.opt** file now appears like Figure 12 (below).



```
Wonderware.opt - Notepad
File Edit Format View Help

# License feature ActiveFactory_RwS_svrDev can include up to 1 hosts
# Please change every generic host name to the real one in lowercase letters
# and copy/paste the modified template to your License Server Options File
INCLUDE ActiveFactory_RwS_svrDev HOST host001

# License feature SVoyager_Portal_svrDev can include up to 1 hosts
# Please change every generic host name to the real one in lowercase letters
# and copy/paste the modified template to your License Server Options File
INCLUDE SVoyager_Portal_svrDev HOST host001

# License feature ActiveFactory_svrDev can include up to 1 hosts
# Please change every generic host name to the real one in lowercase letters
# and copy/paste the modified template to your License Server Options File
INCLUDE ActiveFactory_svrDev HOST host001

# License feature MEAClient_Sessions_svrDev can include up to 1000 hosts
# Please change every generic host name to the real one in lowercase letters
# and copy/paste the modified template to your License Server Options File
INCLUDE MEAClient_Sessions_svrDev HOST host001
INCLUDE MEAClient_Sessions_svrDev HOST host002
INCLUDE MEAClient_Sessions_svrDev HOST host003
INCLUDE MEAClient_Sessions_svrDev HOST host004
INCLUDE MEAClient_Sessions_svrDev HOST host005
INCLUDE MEAClient_Sessions_svrDev HOST host006
INCLUDE MEAClient_Sessions_svrDev HOST host007
INCLUDE MEAClient_Sessions_svrDev HOST host008
INCLUDE MEAClient_Sessions_svrDev HOST host009
INCLUDE MEAClient_Sessions_svrDev HOST host010
INCLUDE MEAClient_Sessions_svrDev HOST host011
INCLUDE MEAClient_Sessions_svrDev HOST host012
INCLUDE MEAClient_Sessions_svrDev HOST host013
INCLUDE MEAClient_Sessions_svrDev HOST host014
INCLUDE MEAClient_Sessions_svrDev HOST host015
INCLUDE MEAClient_Sessions_svrDev HOST host016
INCLUDE MEAClient_Sessions_svrDev HOST host017
INCLUDE MEAClient_Sessions_svrDev HOST host018
INCLUDE MEAClient_Sessions_svrDev HOST host019
INCLUDE MEAClient_Sessions_svrDev HOST host020
INCLUDE MEAClient_Sessions_svrDev HOST host021
INCLUDE MEAClient_Sessions_svrDev HOST host022
```

Figure 13: New Include Line Contents

The lines that begin with the **INCLUDE** keyword include **HOST** or **USER**, depending on the license type. The license types are **per named device** or **per named user**. The words are placed after the license feature name.

- **Per named device license type:** The name of the computer appears after the keyword **HOST**
- **Per named user license type:** The name of the user account appears after the keyword **USER**.

The following example shows a fragment of configuration file for the **per named device** license type. The product is Active Factory 9.2 on the computer named AFRWServer.

```
# License feature ActiveFactory_RWS_svrDev can include up to 1 hosts
# Please change every generic host name to the real one in lowercase letters
# and copy/paste the modified template to your License Server Options File
INCLUDE ActiveFactory_RWS_svrDev HOST AFRWServer
```

For Wonderware Information Server 3.0, the lines that begin with **INCLUDE** keyword contain **SVoyager_...** The following example shows a fragment of configuration file for per named device license type for Wonderware Information Server 3.0 on the computer named InfoServer:

```
# License feature SVoyager_Portal_svrDev can include up to 1 hosts
# Please change every generic host name to the real one in lowercase letters
# and copy/paste the modified template to your License Server Options File
INCLUDE SVoyager_Portal_svrDev HOST InfoServer
```

5. After inserting all licensing information into the **Wonderware.opt** file, save the file and close Notepad.
6. Press **Close** on the **Configure Named User/Device Licenses** window.

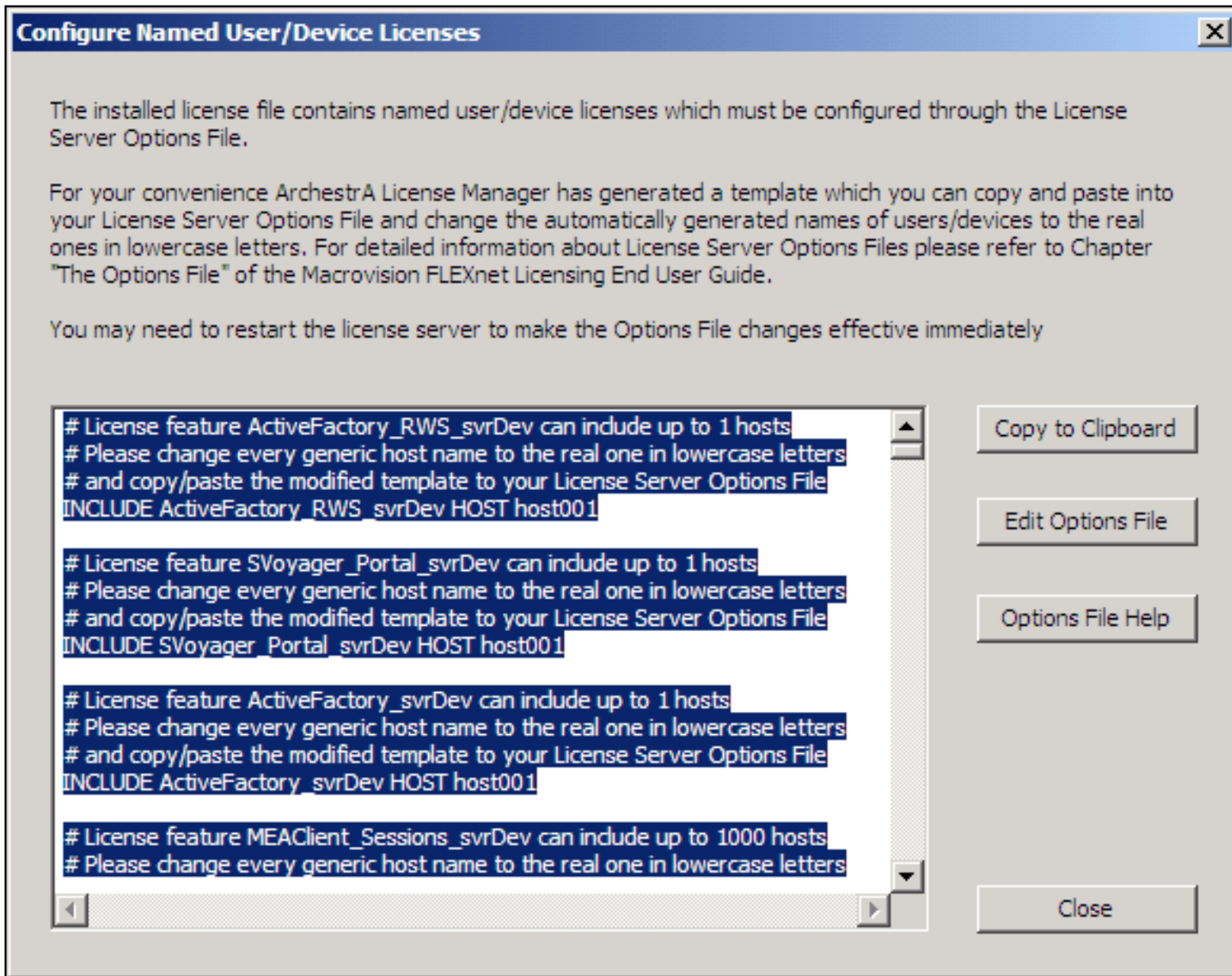


Figure 14: INCLUDE Lines Visible In Configure Named User...Window

7. Click **Yes** when prompted to start the License Server on the target computer (Figure 15 below).

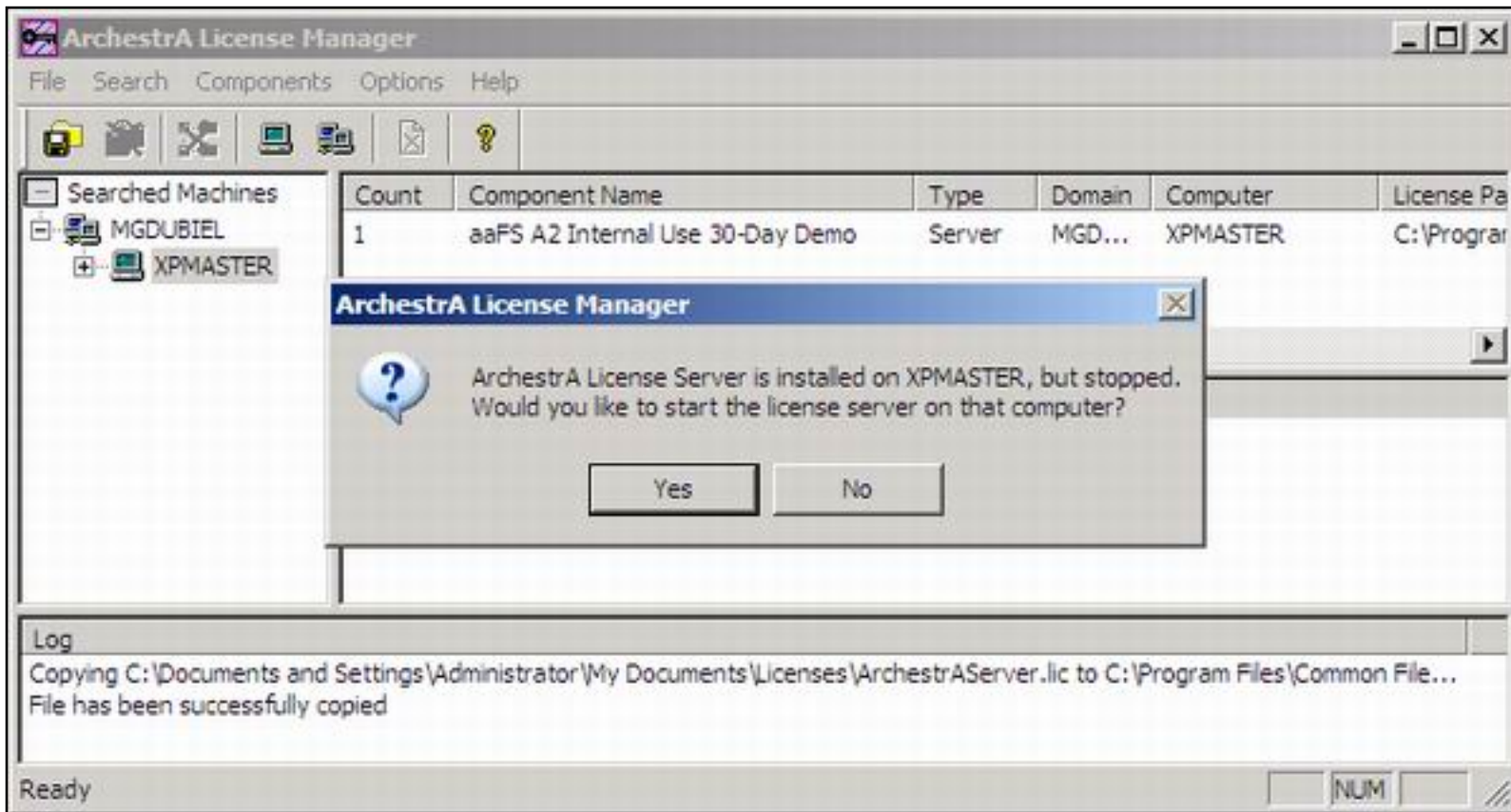


Figure 15: Start the License Server Prompt

The **Add License Server to License Search Path** dialog appears (Figure 16 below).

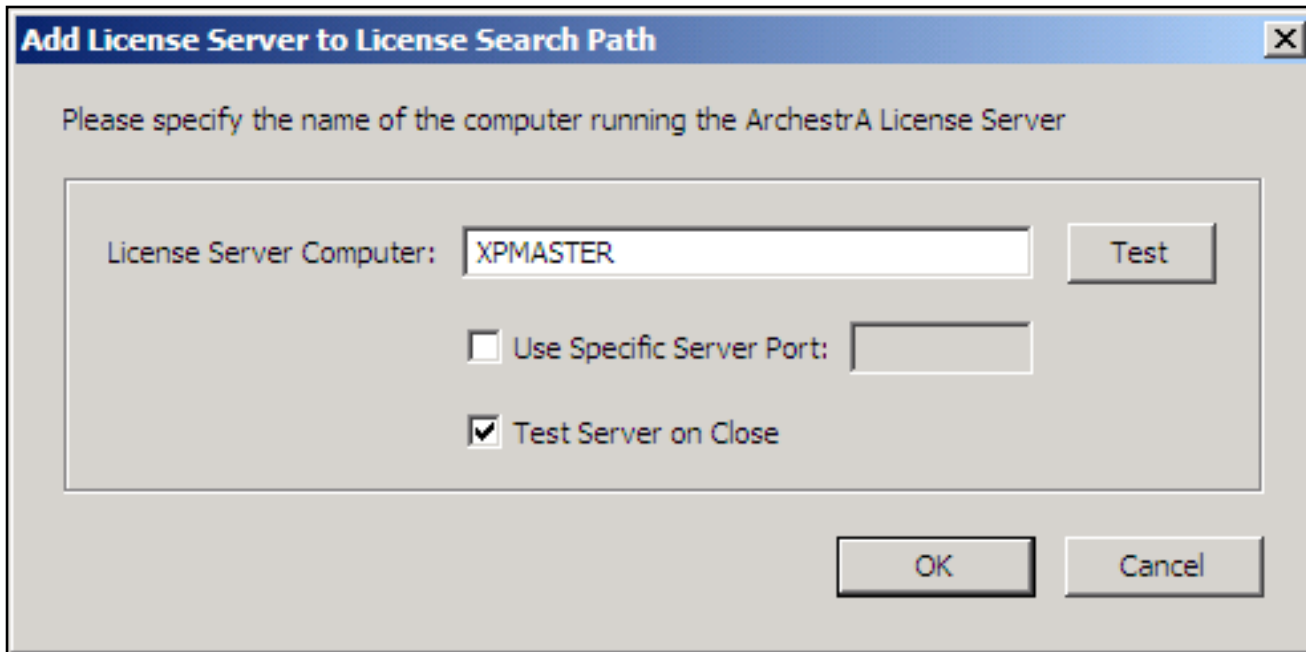


Figure 16: Add the License Server to the Search Path

7. Click **OK** to test the license server path. The **Testing Connection...** dialog appears.

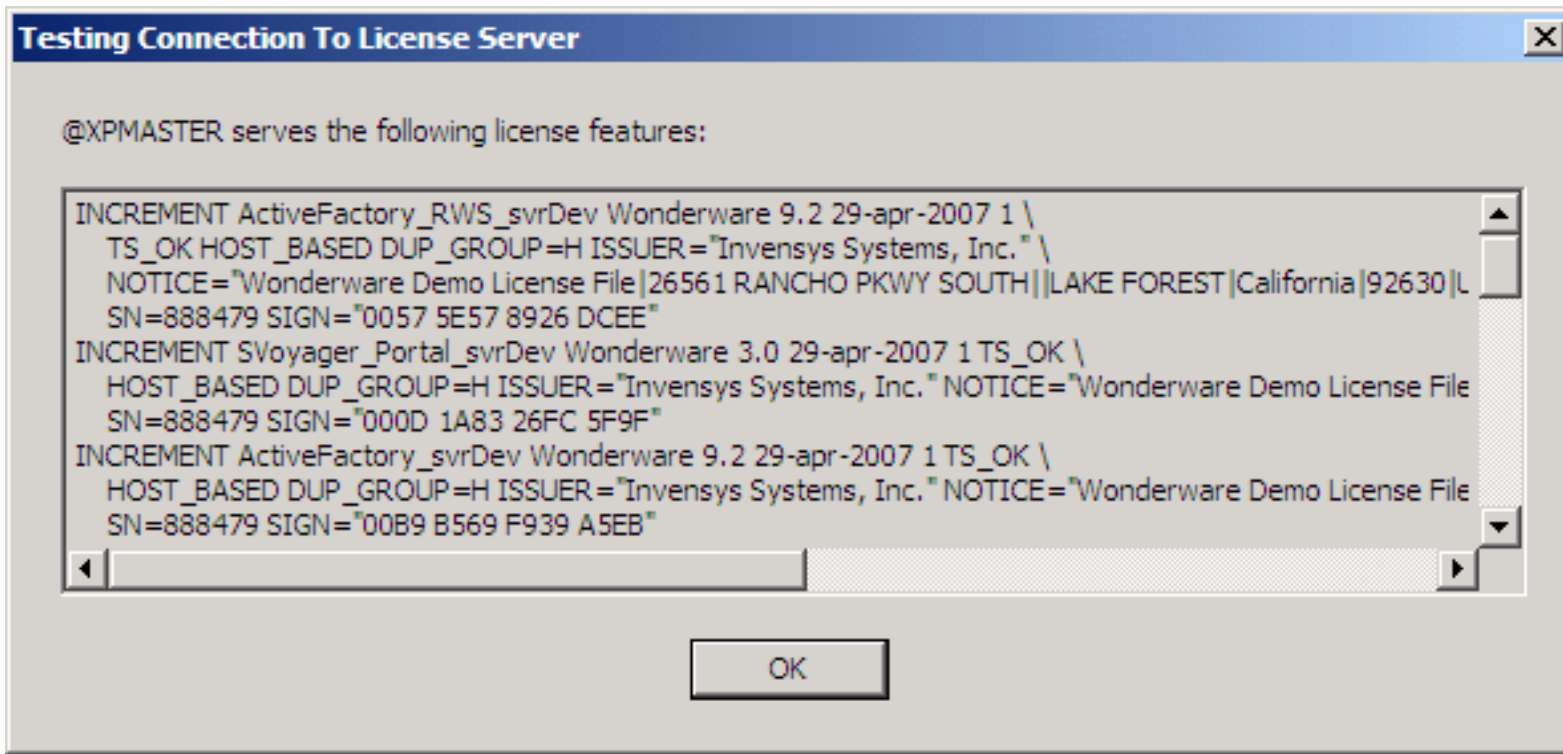


Figure 17: License Server Connection Test

8. Click **OK** to close the **Testing Connection to License Server** dialog.

When you have successfully completed the installation procedure, the ArchestraA License Manager creates the **License Server** folder, which shows the license server component with license features information (Figure 18 below).

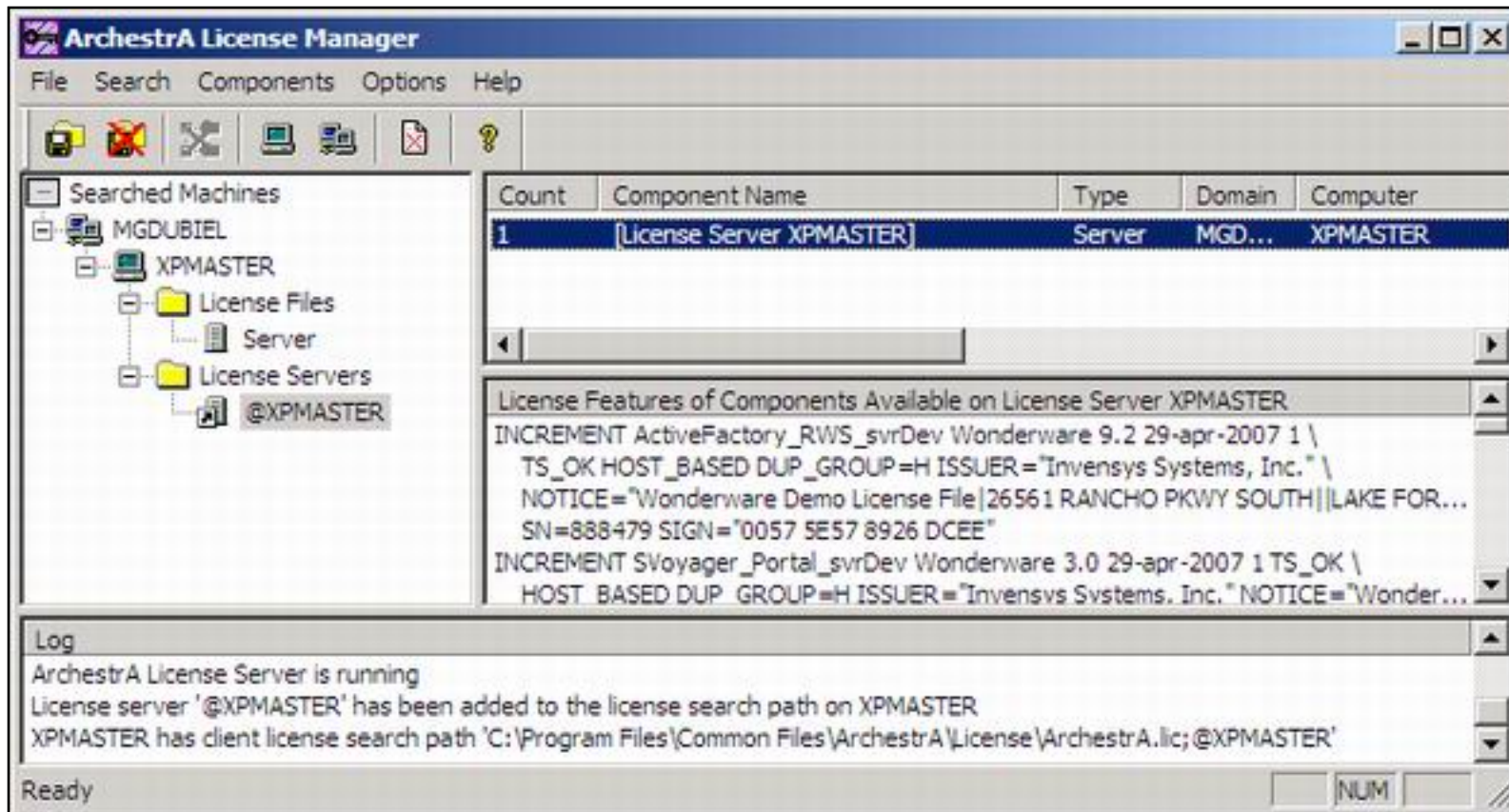


Figure 18: License Server Display

Editing the Wonderware.opt Configuration File

1. Right-click the **Server** icon under the License Files root and select **Edit Server Options File**.

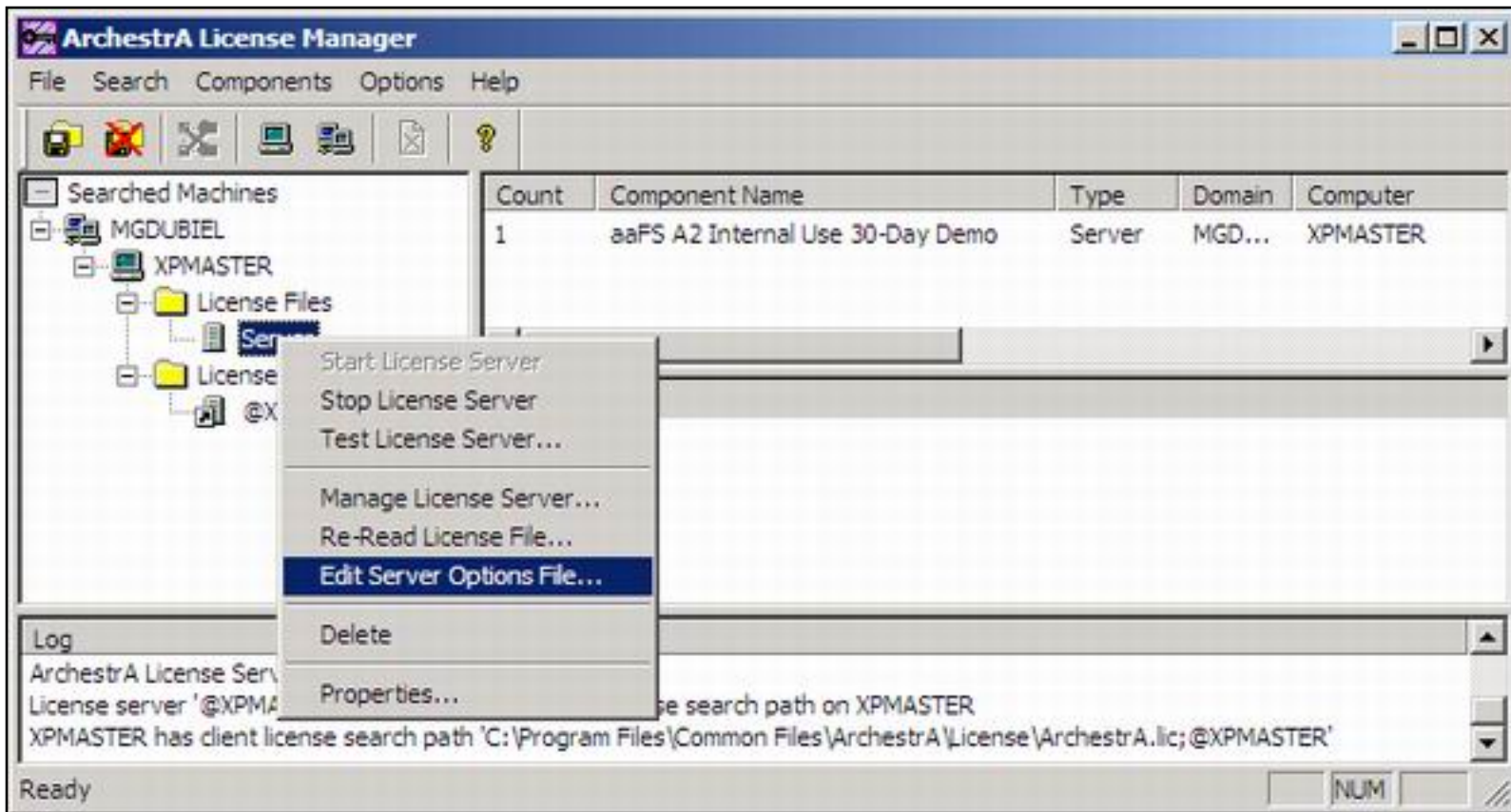


Figure 19: Edit Server Options File

2. Edit the file and save all changes.

Changing the **Wonderware.opt** file requires re-reading the file.

3. Right-click the Server icon under the License Files root and select **Re-Read License File**.

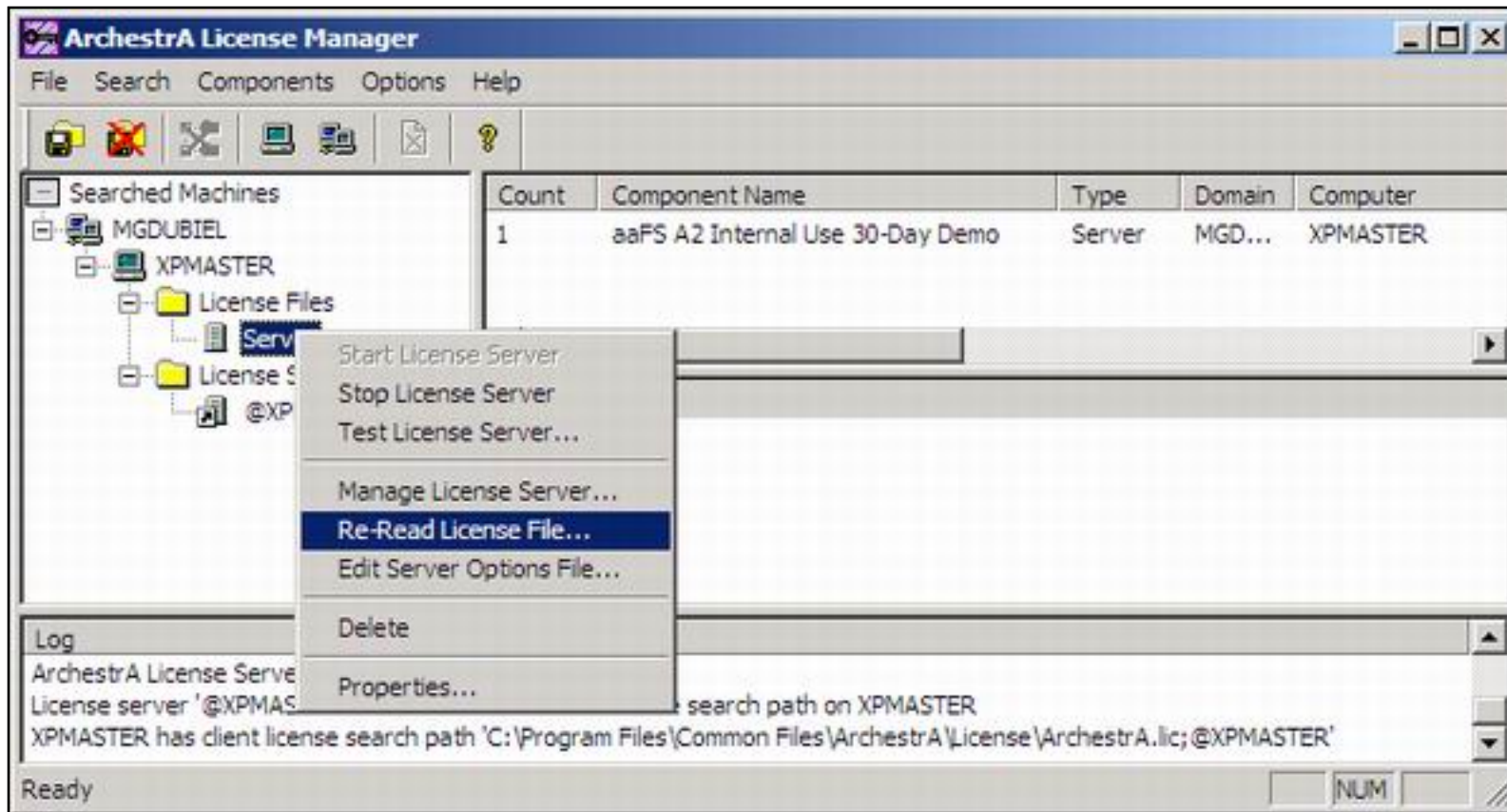


Figure 20: Re-Read License File

4. To apply all changes to the configuration file, right-click the Server icon under the License Files root, and select the following from the menu:
 - **Stop License Server**
 - **Start License Server**

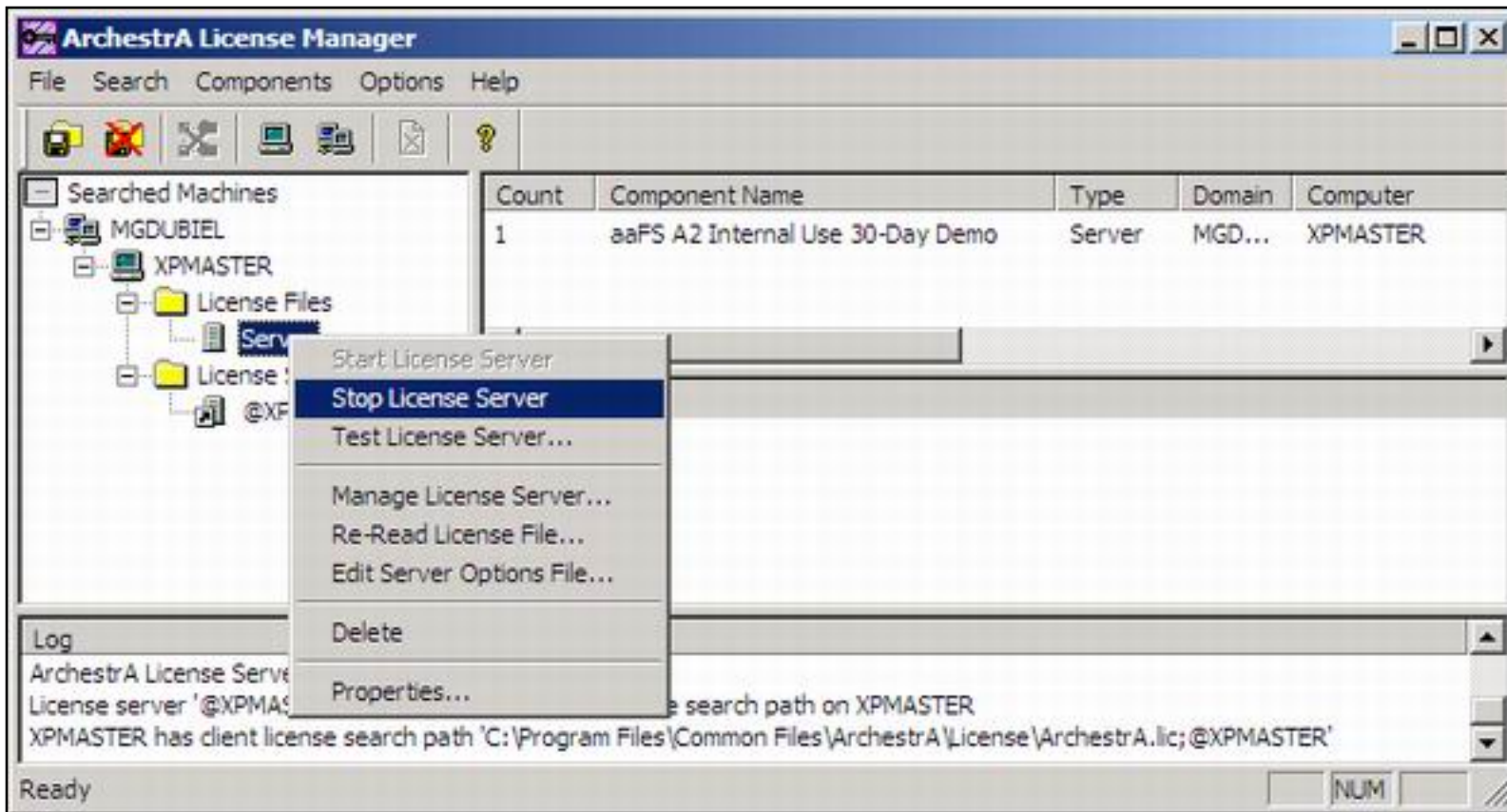


Figure 21: Stop/Start License Server

5. Restart the affected Wonderware products to apply the modifications.

A. Przysucha and G. Dubiel

Tech Notes are published occasionally by Wonderware Technical Support. Publisher: Invensys Systems, Inc., 26561 Rancho Parkway South, Lake Forest, CA 92630. There is also technical information on our software products at www.wonderware.com/support/mmi

For technical support questions, send an e-mail to support@wonderware.com.



[back to top](#)

permission in writing from Invensys Systems, Inc. [Terms of Use](#).