

Tech Note 510

Creating an ActiveFactory Graphic Symbol

All Tech Notes and KBCD documents and software are provided "as is" without warranty of any kind. See the [Terms of Use](#) for more information.

Topic#: 002238

Created: November 2007

Introduction

This *Tech Note* demonstrates how to import ActiveFactory objects into the Archestra IDE so it may be used as a Graphic Symbol.

Application Versions

- ActiveFactory 9.x
- Wonderware Application Server 3.0

Steps

The following steps explain the graphic embedding process.

1. Open Archestra IDE.
2. Click the Graphic Toolbox under **Templates**.
3. On the main menu, click **Galaxy/Import/Client Control**.

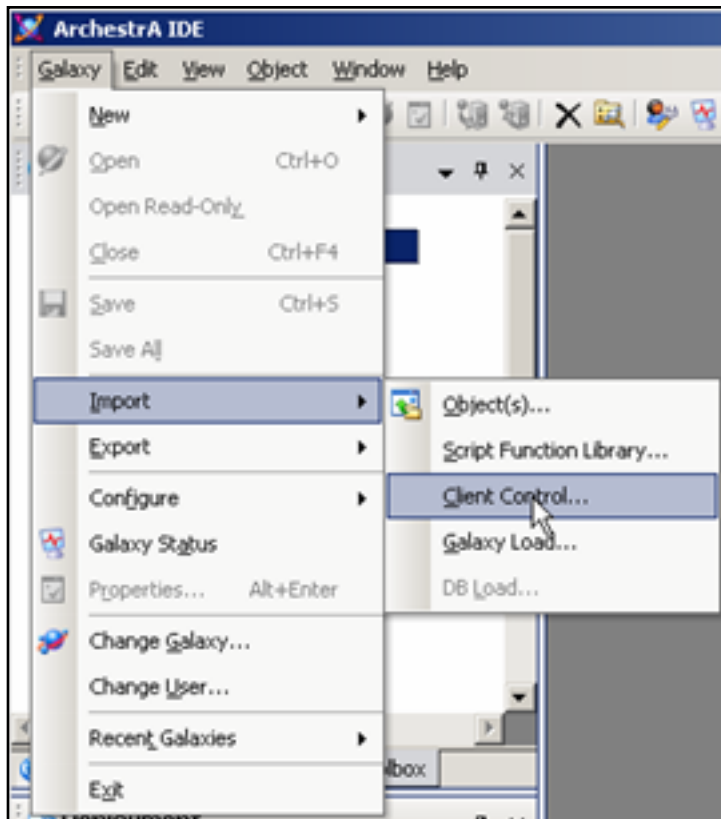


Figure 1: Import Client Control

4. Navigate to **C:\Program Files\Common Files\Arcestra** and select the following client controls:
 - **aHistClientQueryControl.dll**
 - **aaHistClientTagPicker.dll**
 - **aaHistClientTimeRangePicker.dll**
 - **aaHistClientTrendControl.dll**

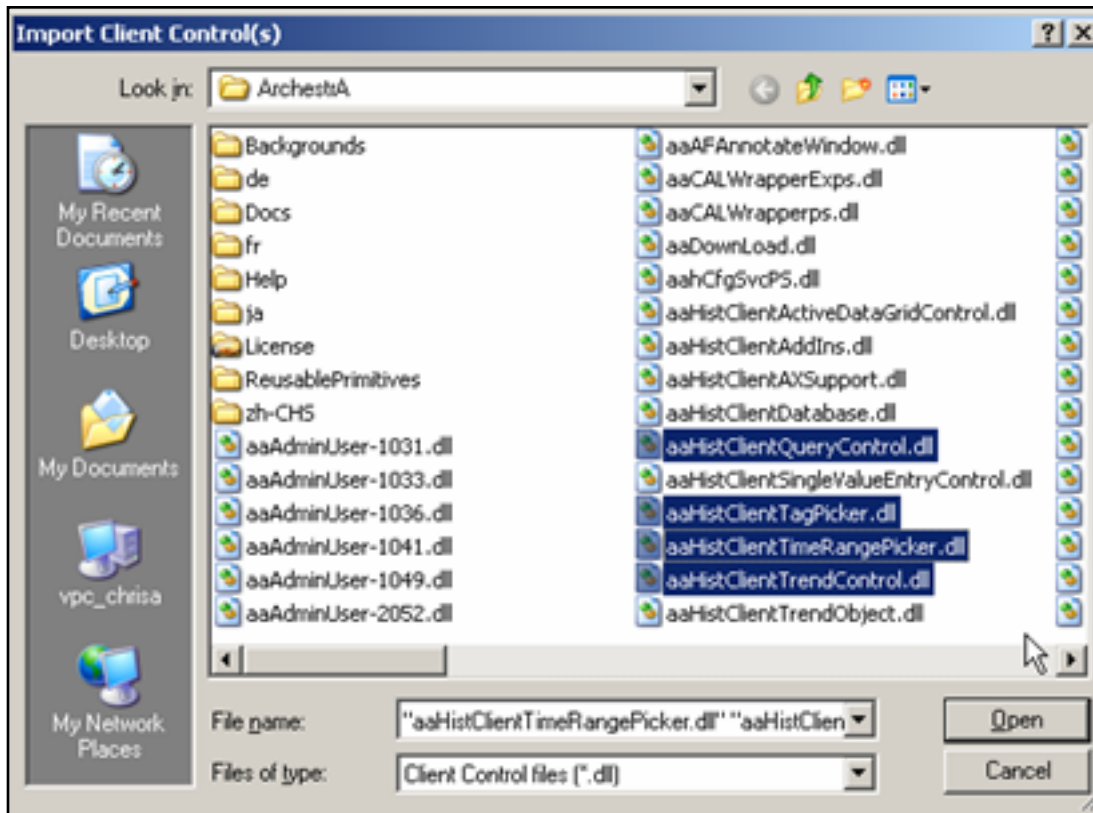


Figure 2: Import .Dll Objects

5. In the IDE, create a new Grapic Toolset and name it **ActiveFactory**.
6. Create 4 new Symbols with the following names:
 - **QueryControl**
 - **TagPicker**
 - **TimeRangePicker**
 - **TrendControl**

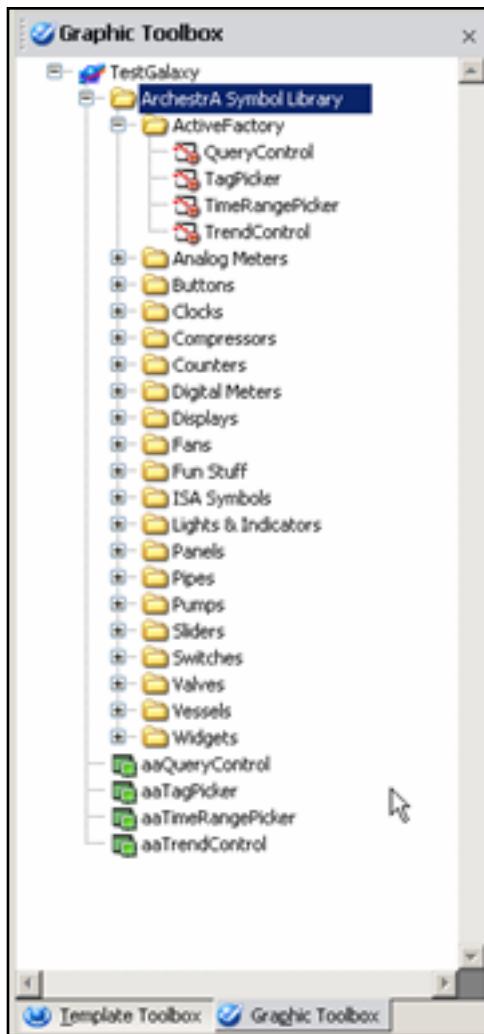


Figure 3: Create New Graphic Toolset

6. Open the **Symbol QueryControl**.
7. Click the **Embed Symbol** tool to embed a graphic.



Figure 4: Embed Symbol Tool

8. Select the **aaQueryControl**.

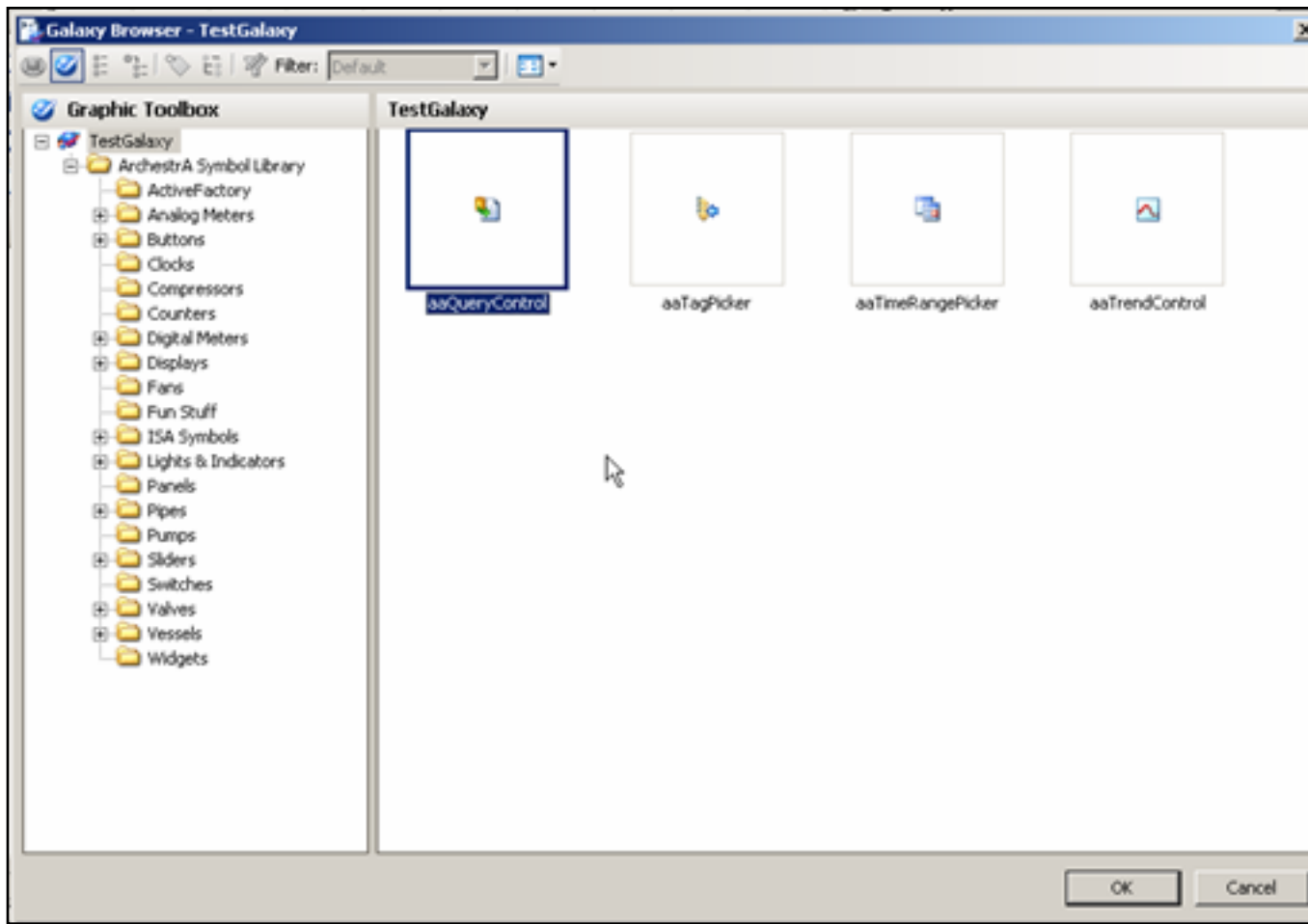


Figure 5: Select Control for Embedding

9. Repeat steps 7 and 8 for the remaining controls.

C. Azer

Tech Notes are published occasionally by Wonderware Technical Support. Publisher: Invensys Systems, Inc., 26561 Rancho Parkway South, Lake Forest, CA 92630. There is also technical information on our software products at www.wonderware.com/support/mmi

For technical support questions, send an e-mail to support@wonderware.com.



[Back to top](#)

©2008 Invensys Systems, Inc. All rights reserved. No part of the material protected by this copyright may be reproduced or utilized in any form or by any means, electronic or mechanical, including photocopying, recording, broadcasting, or by any information storage and retrieval system, without permission in writing from Invensys Systems, Inc. [Terms of Use](#).