

Tech Note 525

Re-creating the Factelligence Middleware COM+ Application when the Server Name is Changed

All Tech Notes and KBCD documents and software are provided "as is" without warranty of any kind. See the [Terms of Use](#) for more information.

Topic#: 002261

Created: March 2008

Introduction

This *Tech Note* guides you through the process of re-creating the Factelligence Middleware COM+ application when the Server name is changed.

Application Versions

- Wonderware® Factelligence 3.4
- Microsoft® Windows Server 2003 and later

Procedure

You will need to go to Component Services and delete/re-create the Factelligence COM+ application. You must create the application, then install the Factelligence COM+ components.

To create a new Factelligence COM+ application

1. Open the Component Services window using **Administrative Tools/Component Services**.
2. Delete the existing **Factelligence** COM+ application.

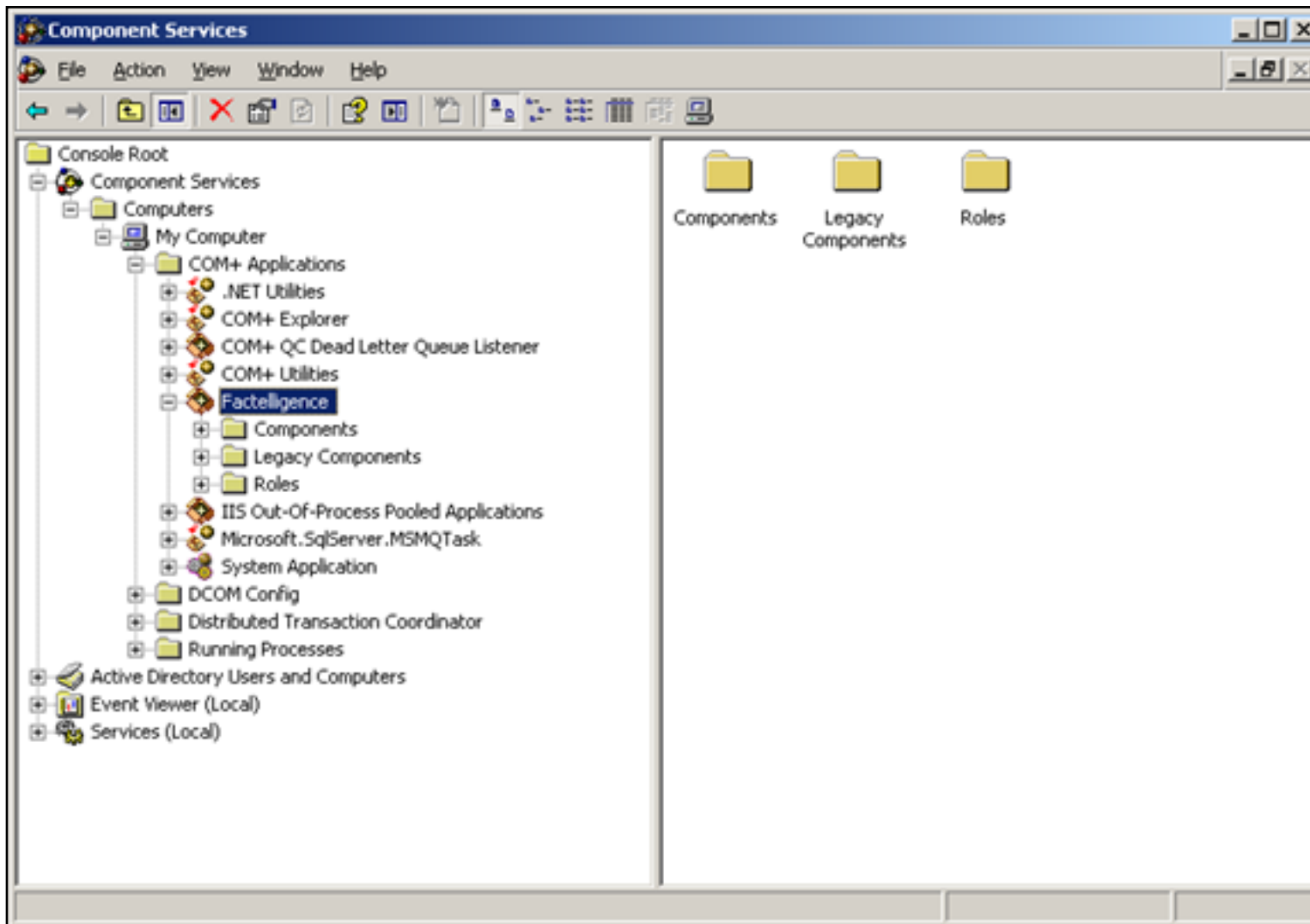


Figure 1: Delete the Existing Factelligence COM+ Application

3. Click **Yes** to confirm the deletion.

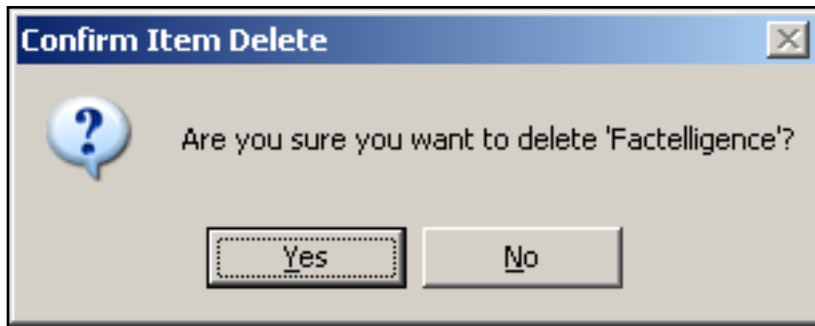


Figure 2: Confirm the Deletion

4. In Component Services right-click **COM+ Application** and select **New/Application**. The **COM+ Application Install Wizard** appears.

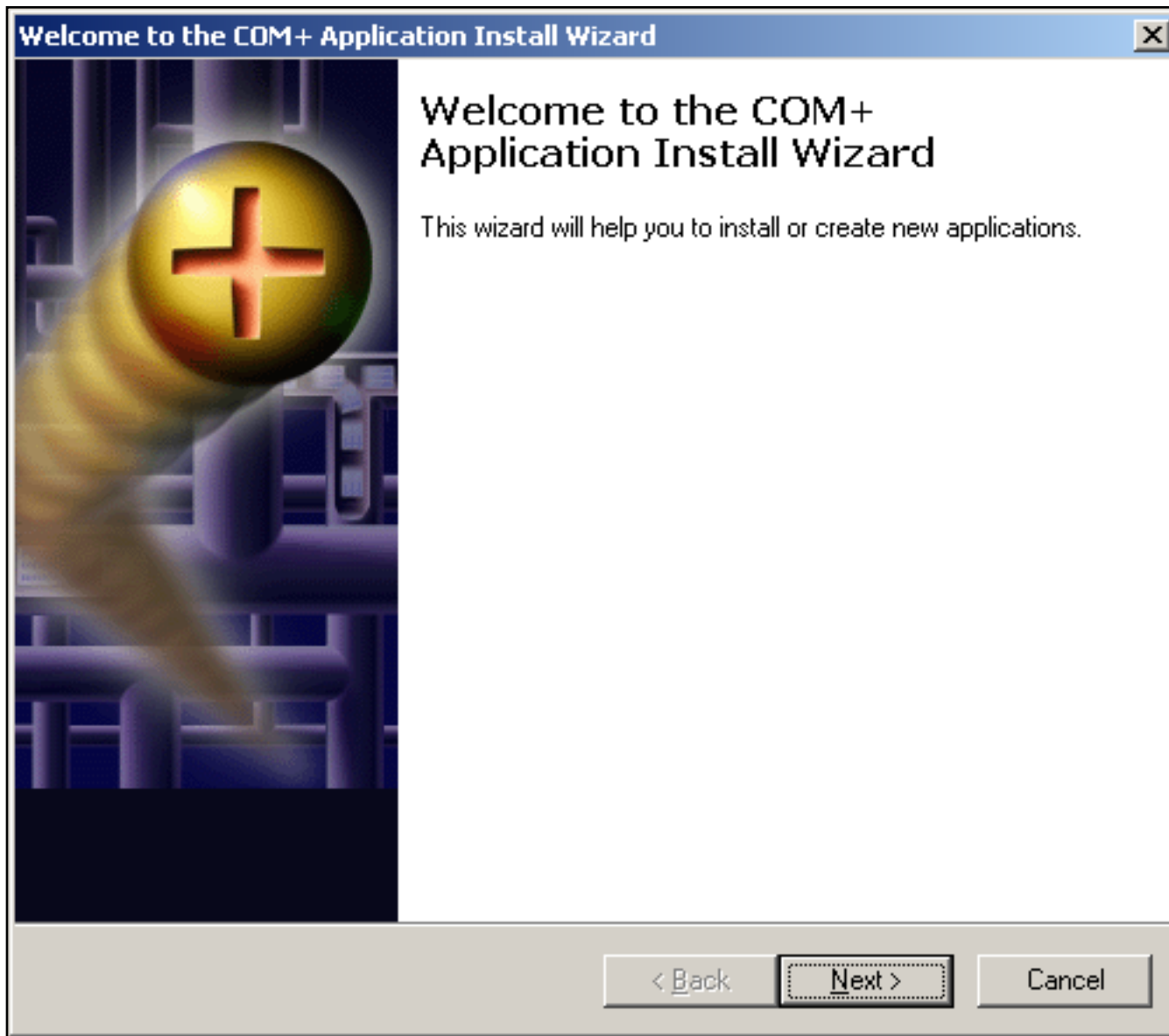


Figure 3: COM+ Application Install Wizard

5. Click next and select **Create an empty application**.

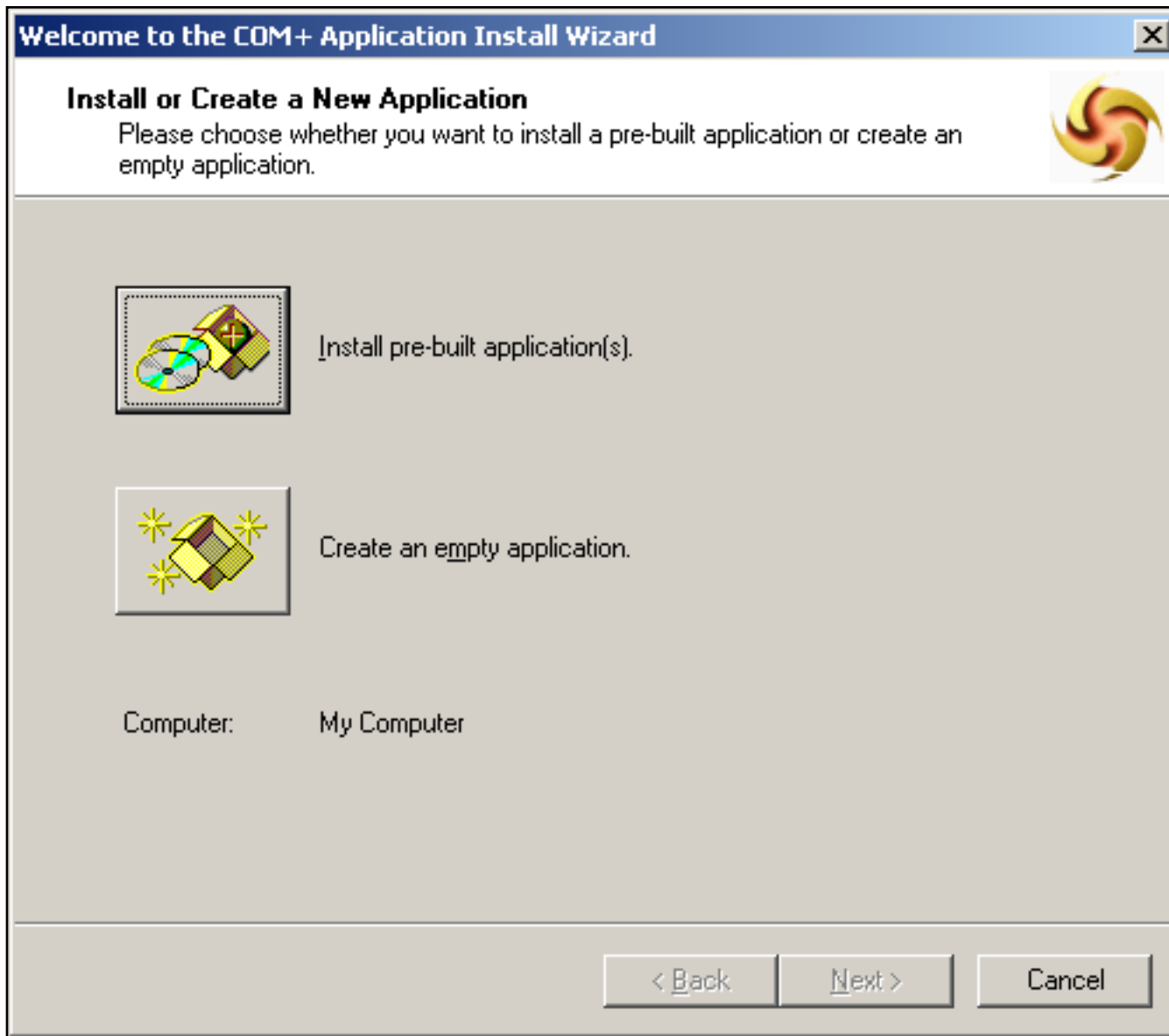


Figure 4: Create an Empty Application

6. Click **Next**.
7. Type **Factelligence** as the application name, and select the **Server application** option.

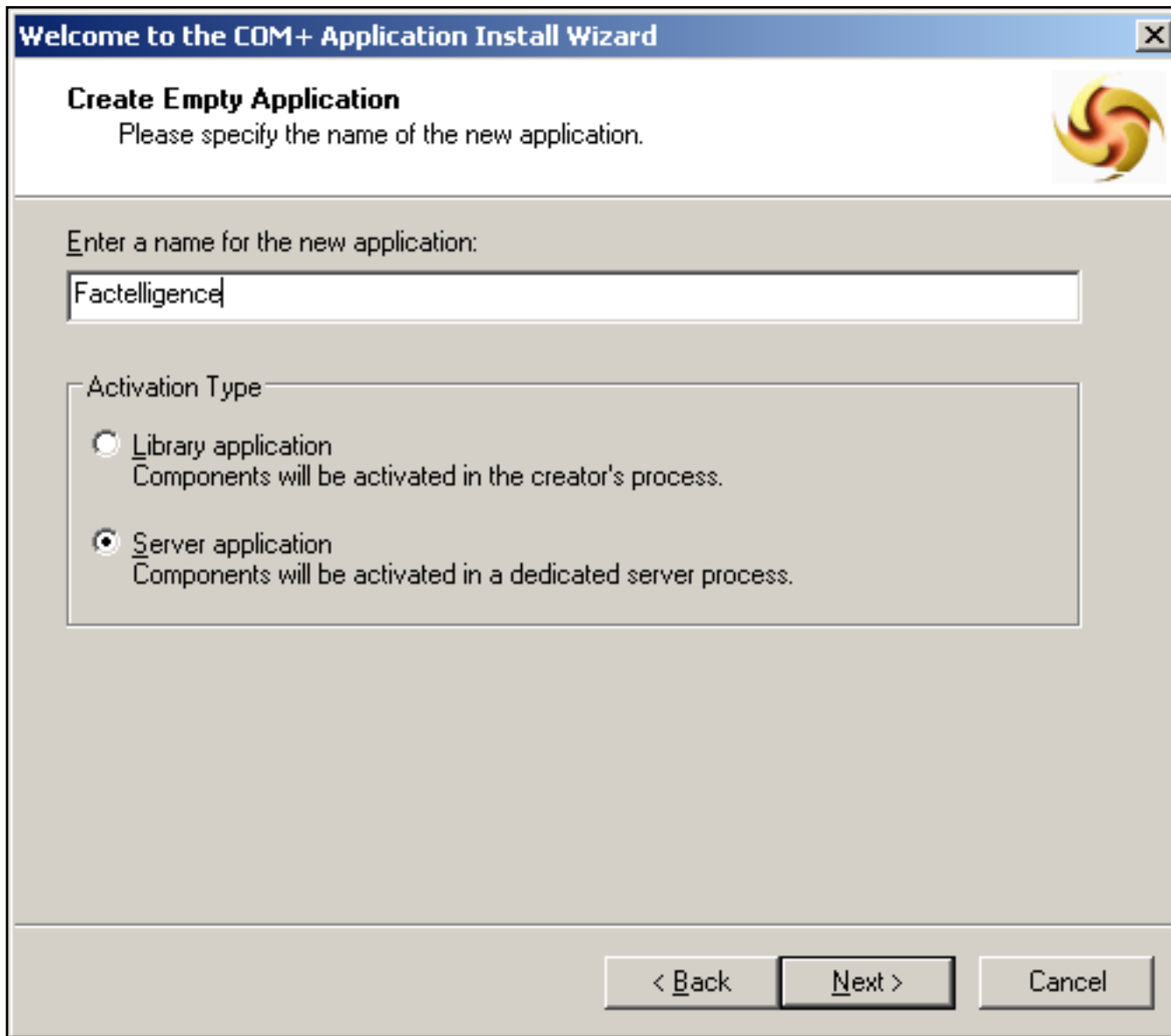


Figure 5: Name the Server Application

8. Click **Next**. The **Set Application Identity** wizard appears.

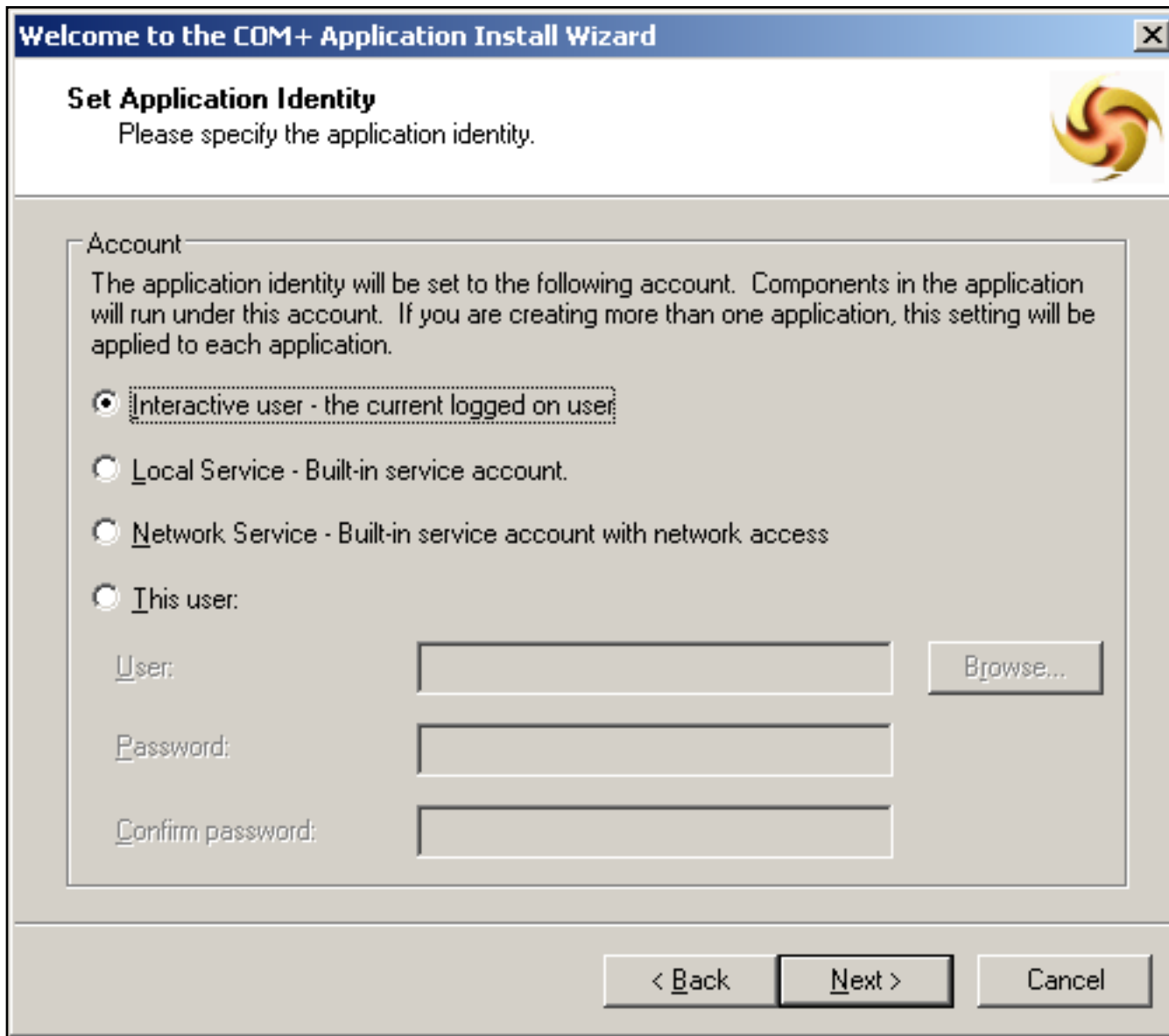


Figure 6: Server Application Account Identity

9. Select **Interactive user - the current logged on user** or the appropriate option.
10. Click **Next**. The **Add Application Roles** wizard appears. The **CreatorOwner** role appears by default.

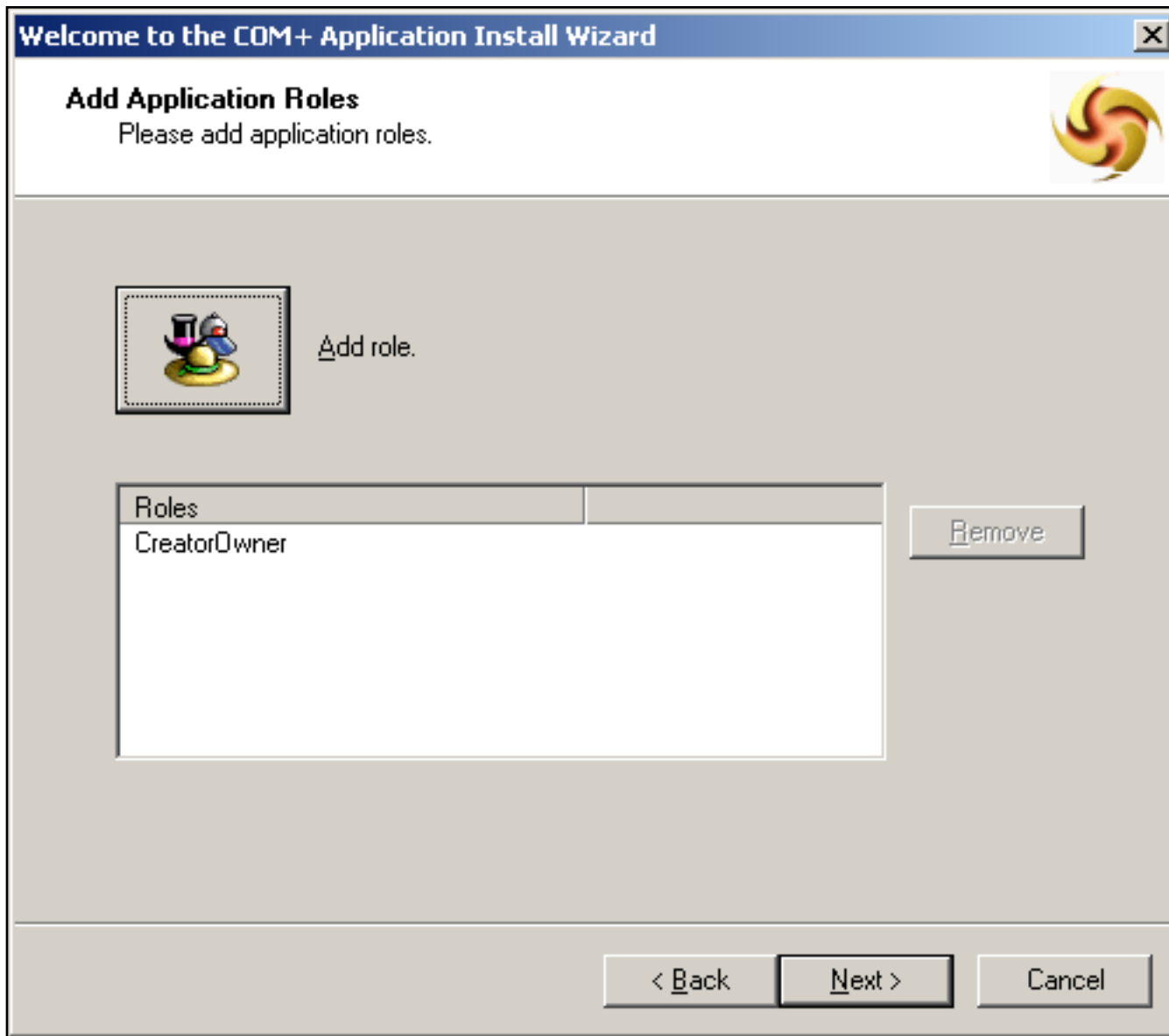


Figure 7: Add Application Role Wizard

11. Click **Add role** to add a different role, or click **Next**.
12. Click **Next**, then **Finish**.

[To install the Factelligence COM+ components](#)

1. In the Component Services window, expand the **COM+ Applications** folder and locate the Factelligence application that you created.
2. Expand the **Factelligence** folder.
3. Right-click the **Components** sub-directory and select **New Component**.



Figure 8: New COM+ Component Install Wizard

4. Click **Next** and click **Install new component(s)**.

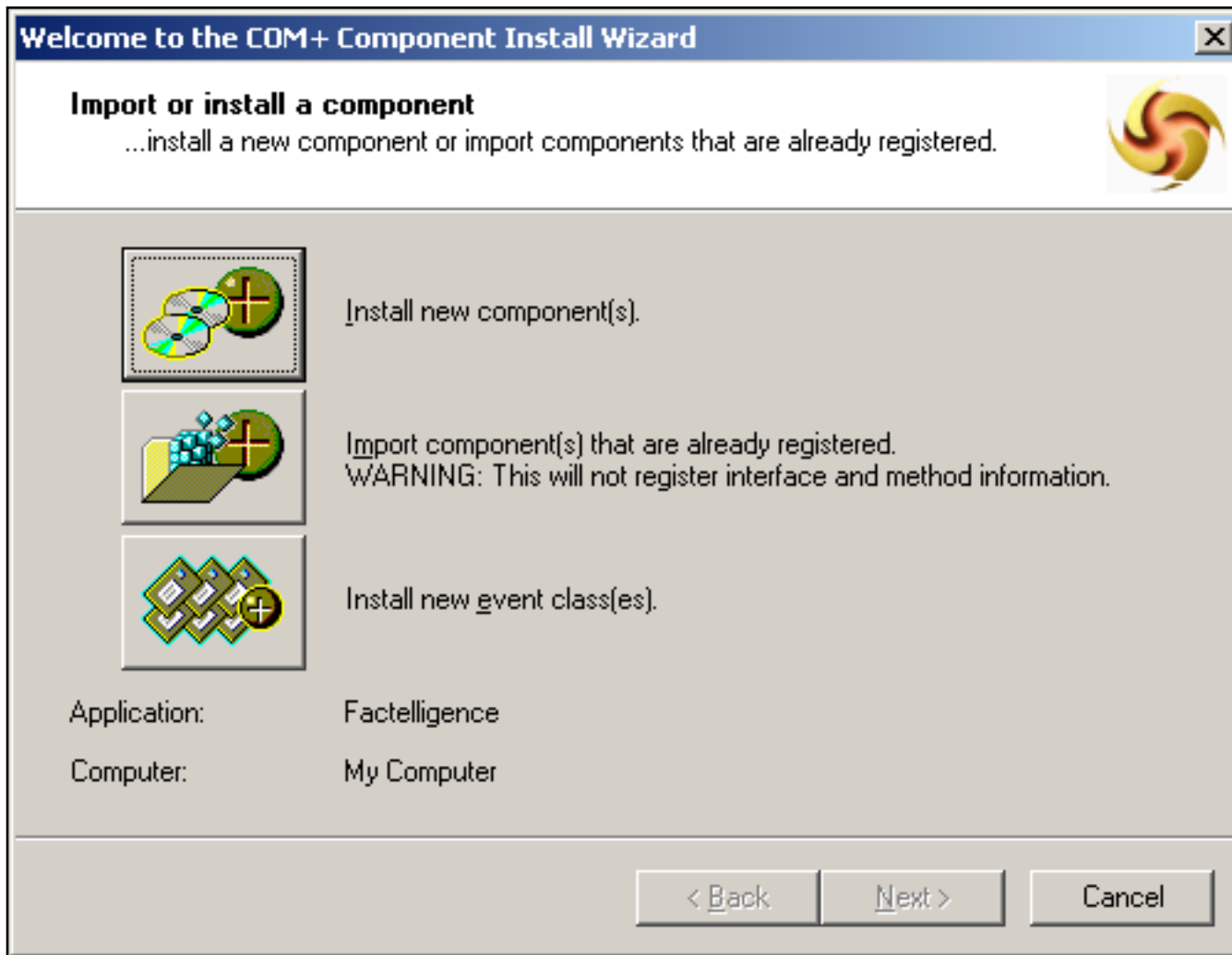


Figure 9: Install New Component(s)

5. Locate the **Middleware** directory and select all the .dlls using the **Ctrl+A** keys (Figure 10 below). The Middleware directory default location is **C:\Program Files\wonderware\Factelligence\Middleware**.
6. Click **Open**.

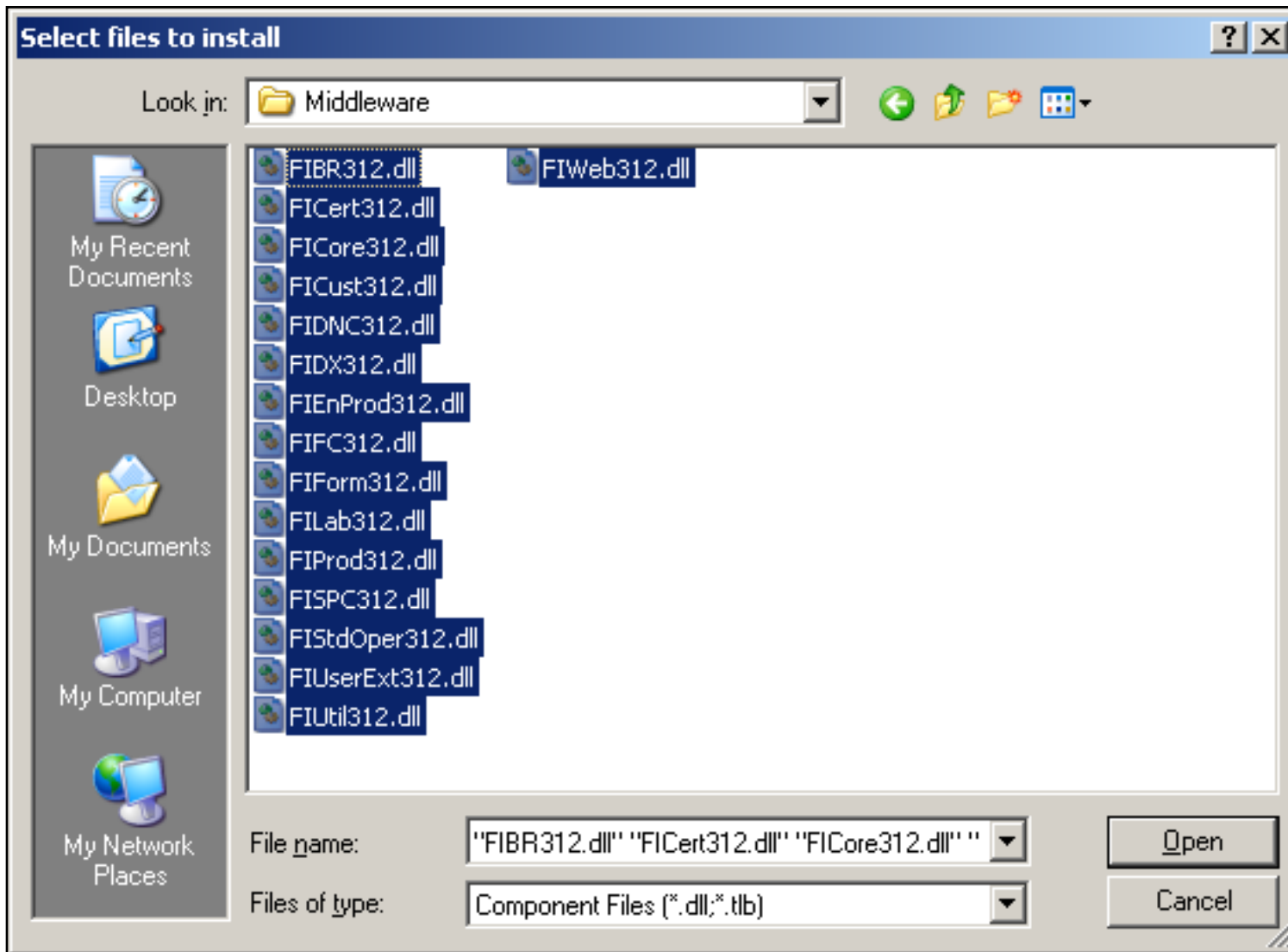


Figure 10: Select All Middleware .dlls

7. When the **Install new components** wizard appears, click **Next**, then **Finish**.

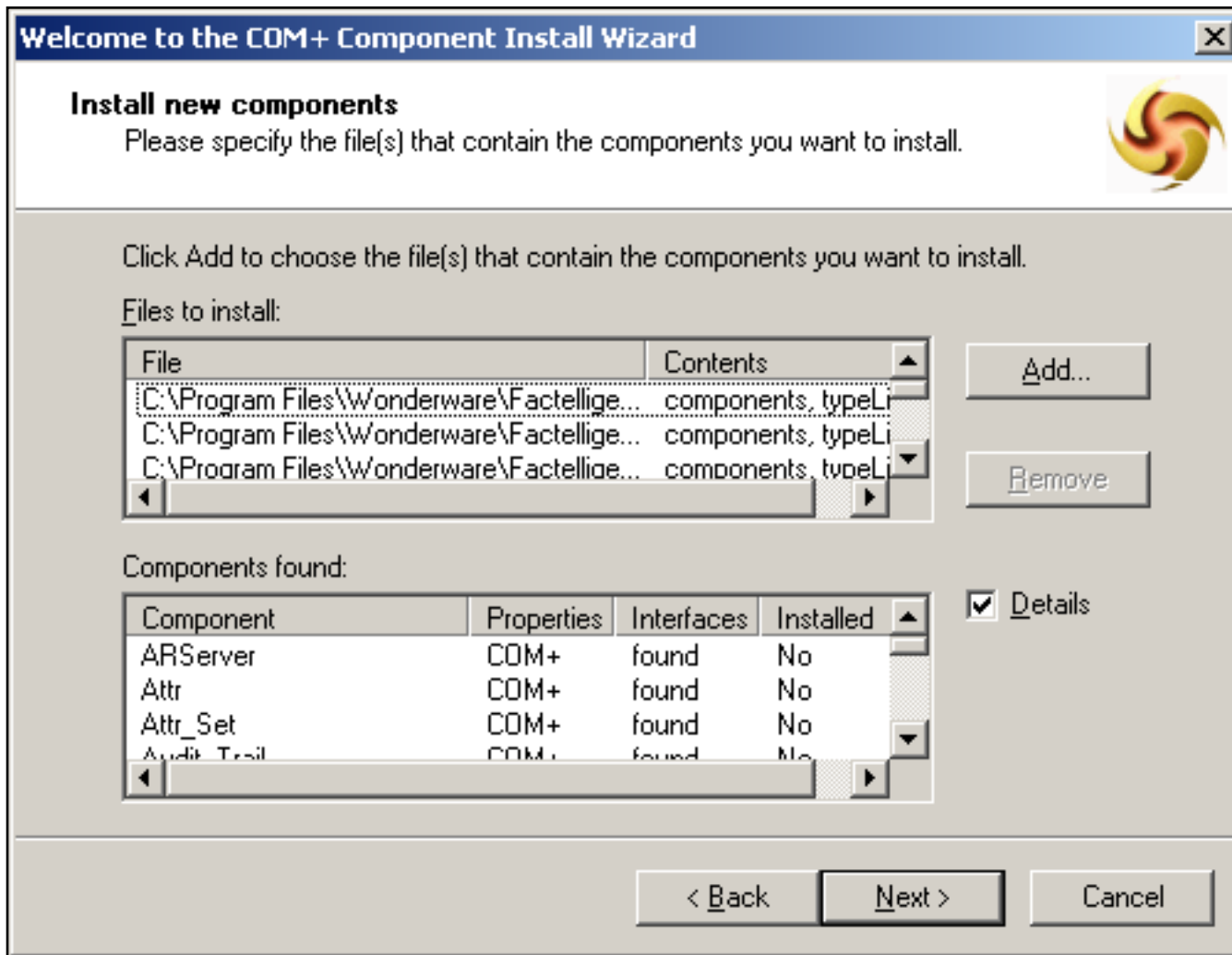


Figure 11: Install New Components Wizard

8. Wait several minutes for the components to be registered.
9. In the Middleware directory, double-click the **FactelligenceCFGEditor.exe** and provide the correct SQL Server network name and login permissions.
 - You must provide Administrator-level permissions.
 - The SQL Server is usually deployed on a different node. If it is on the same machine, you can provide **localhost** as the machine name.
 - You can click **Test** to confirm the connection.

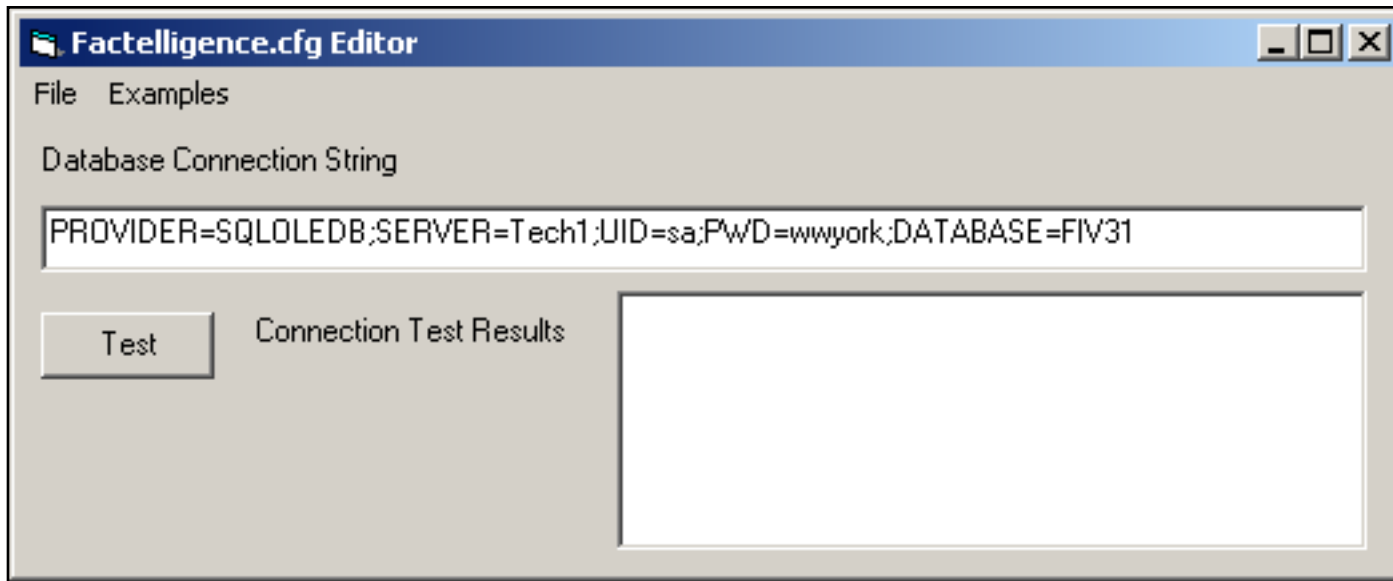


Figure 12: Factelligence CFG Editor

10. Close the CFG Editor by clicking the **X** at the upper-right.
11. Using the Computer Management window, locate the local **Groups** and confirm the **DistributedCOM Users** group has the permissions shown in Figure 13 (below).

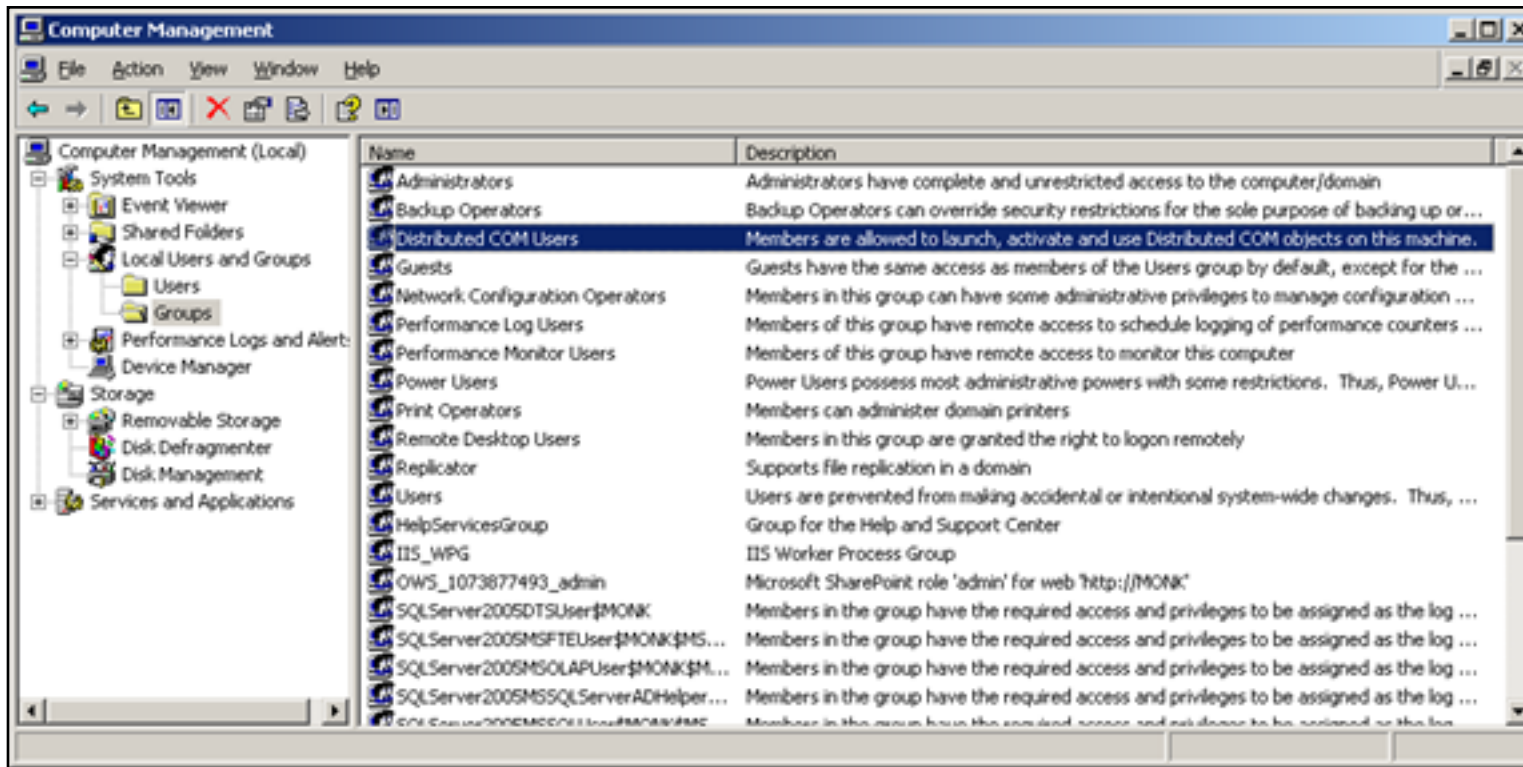


Figure 13: DistributedCOM Users Group Permissions

J. Godfrey

Tech Notes are published occasionally by Wonderware Technical Support. Publisher: Invensys Systems, Inc., 26561 Rancho Parkway South, Lake Forest, CA 92630. There is also technical information on our software products at www.wonderware.com/support/mmi

For technical support questions, send an e-mail to support@wonderware.com.



Back to top

©2008 Invensys Systems, Inc. All rights reserved. No part of the material protected by this copyright may be reproduced or utilized in any form or by any means, electronic or mechanical, including photocopying, recording, broadcasting, or by any information storage and retrieval system, without permission in writing from Invensys Systems, Inc. [Terms of Use](#).