

All Tech Notes, Tech Alerts and KBCD documents and software are provided "as is" without warranty of any kind. See the [Terms of Use](#) for more information.

Topic#: 002354  
Created: April 2009

## Introduction

This *Tech Note* outlines the process to manually create Operations & Performance (Factelligence) entries in the Wonderware Information Server (WIS) System Panel if they were not automatically created as they should have been by the installer.

**Note:** The preferred method of repairing the missing WIS entries is an uninstall/reinstall of Operations & Performance WIS Contents. This Tech Note is meant to be a workaround if the installer will not correct the problem.

## Application Version

- Operations & Performance 3.5
- Wonderware Information Server (WIS) 3.0 and later

## ArchestrA Reports Repair

After installing the Operations & Performance Wonderware Information Server Contents > Table Weaver Reports and Reporting Services Reports (Figure 1 below), they should appear in the WIS **System Panel** (Figure 2 below).

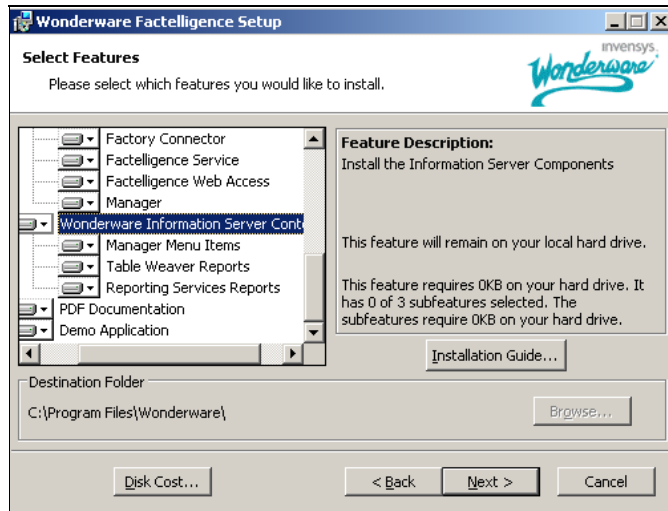


FIGURE 1: OPERATIONS & PERFORMANCE WONDERWARE INFORMATION SERVER CONTENTS INSTALL OPTIONS



FIGURE 2: WONDERWARE INFORMATION SERVER SYSTEM PANEL WITH FACTELLIGENCE ITEMS

If they do not appear here, you can manually deploy the reports to force them to appear.

1. Click Start/Programs/Wonderware/Information Server/Deploy ArchestrA Reports.
2. Click **aaReports Database > Deploy Reports** on the left panel.
3. Click **Existing Shared Data Source** option.
4. For **Existing SDS Type**, click **aaFactelligence**.
5. Browse for the configuration file **C:\Program Files\Wonderware\Factelligence\Reporting Services\RptServicesConfig.xml**
6. Click the **Deploy** button (Figure 3 below).

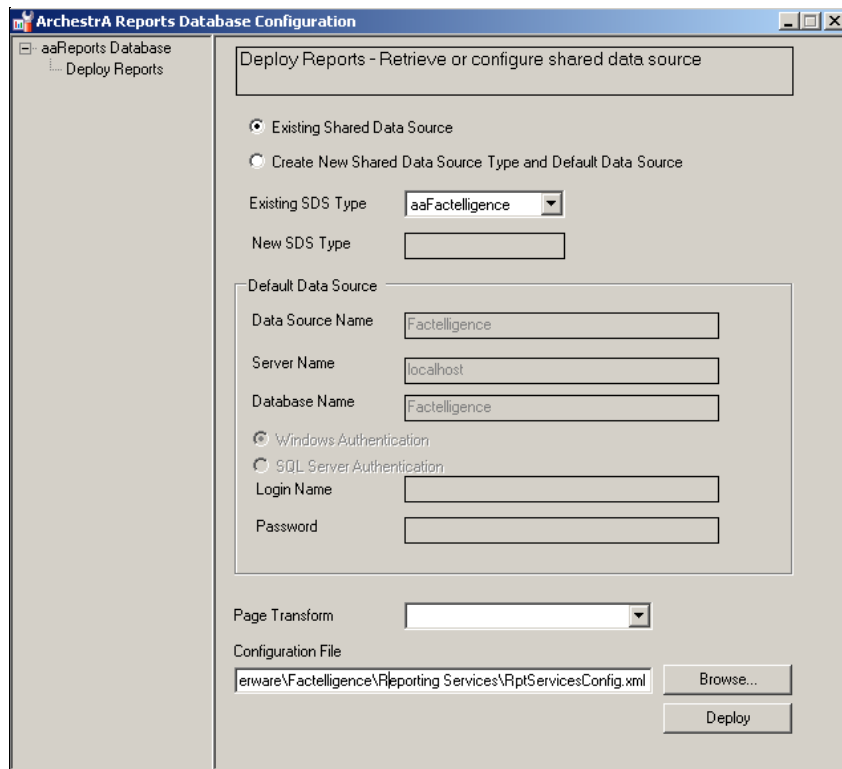


FIGURE 3: DEPLOY ARCHESTRA REPORTS UTILITY

7. Close and re-open WIS. You should see the reports displayed in the WIS **System** Panel.

## Manager Repair

After installing the Operations & Performance Wonderware Information Server Contents > Manager Menu Items (Figure 4 below), **Manager** should appear in the WIS **System** Panel (Figure 5 below).

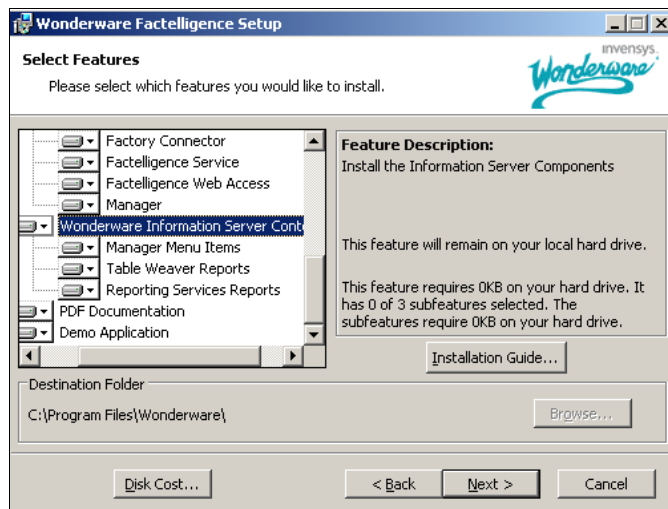


FIGURE 4: OPERATIONS & PERFORMANCE WONDERWARE INFORMATION SERVER CONTENTS INSTALL OPTIONS

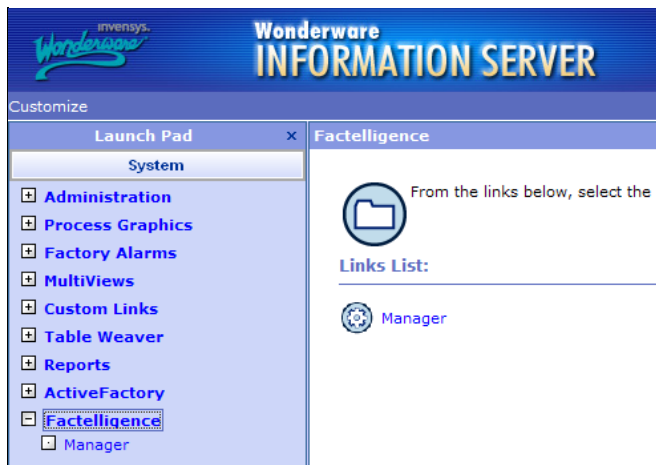


FIGURE 5: WONDERWARE INFORMATION SERVER SYSTEM PANEL WITH FACTELLIGENCE MANAGER

If Manager does not appear here (or if you have a need to edit the link's URL), changes can be made in the SQL tables that contain the panel content information.

- Launch SQL Management Studio and connect to the SQL Server that is hosting the database named SuiteVoyager.

The following tables in the SuiteVoyager database contain the information required to display the Manager link on the System Panel:

- NavNode
- NavPanelNode
- NavRole

The **NodeID** field is the key that must be the common link throughout all three tables to relate the records properly, as shown in Figures 6, 7, and 8 below. There are samples displayed below of what these tables need to contain in order to display the Manager link. (Other records in these tables have been removed from this display for clarity, but should not be modified in your actual database.)

Your node IDs may not match the sample exactly, but it should not matter as long as your references are consistent. Node 0 as the Parent always indicates the root of the menu.

	NodeId	NodeTitle	NodeDesc	NodeUrl	NodeHelpUrl	NodeIconUrl	NodeSmallIconUrl1	NodeDynamic	NodeType	NodeParentId	NodeSmallIconUrl2	NodeCustomDisplay	NodeUserId
1	29	Factelligence						0	NODE	0			
2	30	Manager	Access Factelligence Manager Application	http://localhost/Factelligence/Manager/manager.htm				0	LEAF	29			

FIGURE 6: NAVNODE TABLE SAMPLE

	RowId	PanelId	Nodeid	NodeParentId	NodeOwner
1	29	1	29	0	1
2	30	1	30	29	1

FIGURE 7: NAVPANELNODE TABLE SAMPLE

	Id	Nodeid	Roleid	RoleName
1	100016	29	Everyone	
2	100017	30	Everyone	

FIGURE 8: NAVROLE TABLE SAMPLE

Once these tables have complete and correct records, closing and re-launching WIS should result in the Manager link displaying in the WIS System Panel.

D. Scott

*Tech Notes* are published occasionally by Wonderware Technical Support. Publisher: Invensys Systems, Inc., 26561 Rancho Parkway South, Lake Forest, CA 92630. There is also technical information on our software products at [Wonderware Technical Support](#).

For technical support questions, send an e-mail to [support@wonderware.com](mailto:support@wonderware.com).

[Back to top](#)