

Tech Note 611

Configuring Windows® SharePoint Services 3.0™ for Wonderware Information Server 3.1

All Tech Notes, Tech Alerts and KBCD documents and software are provided "as is" without warranty of any kind. See the [Terms of Use](#) for more information.

Topic#: 002368

Created: April 2009

Introduction

After you install Windows SharePoint Services 3.0 in **Basic** mode (Figure 1 below), a default web site named **Sharepoint - 80** is created in IIS so that Sharepoint Services gets the default Port **80**. Sharepoint taking over the Default web site is problematic for Wonderware Information Server.

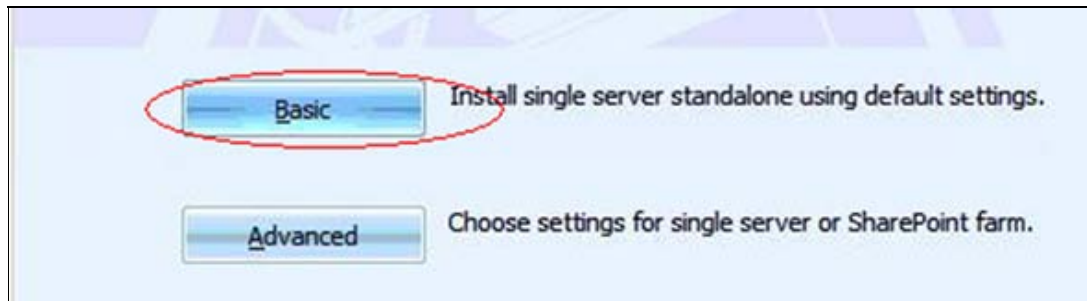


FIGURE 1: SHAREPOINT SERVICES BASIC MODE FOR SINGLE SERVER STANDALONE

The Default Web Site that was using port 80 is stopped now as shown in Figure 2 (below):

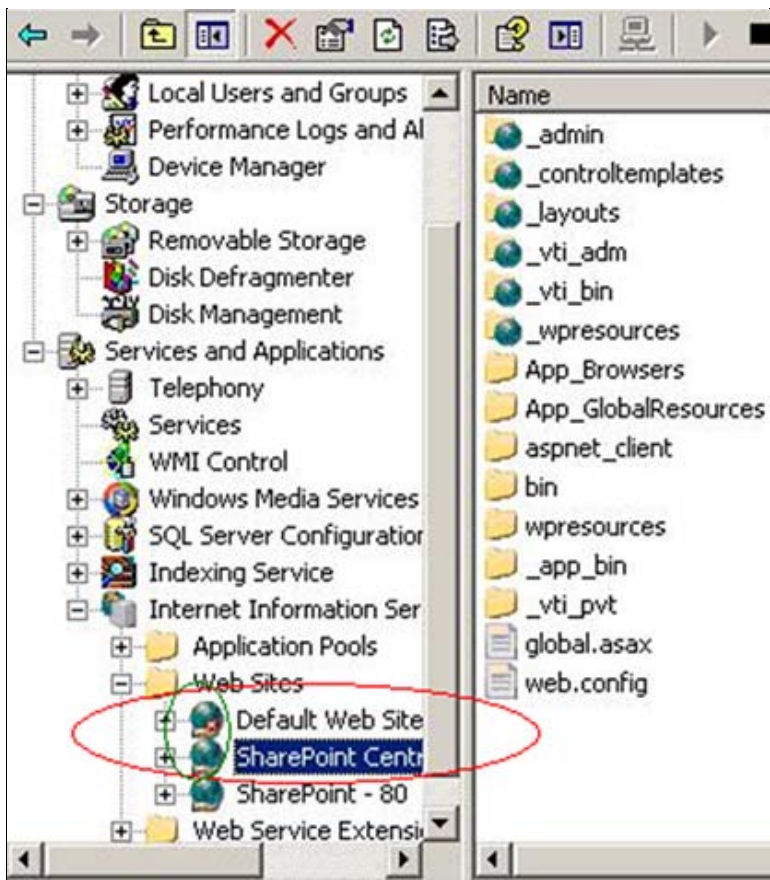


FIGURE 2: "SHAREPOINT - 80" IS CREATED IN INTERNET INFORMATION SERVICES (IIS)

At this point you must delete the **Sharepoint - 80** web site that is using the default port.

Application Versions

- Wonderware Information Server 3.0 and 3.1
- Microsoft SharePoint 3.0

Deleting the Default Web site

1. From the Start Menu, select Settings/Control Panel/Administrative Tools/SharePoint 3.0 Central Administration. The Central Administration site appears as shown in Figure 3 (below):
2. Click the **Application Management** tab.

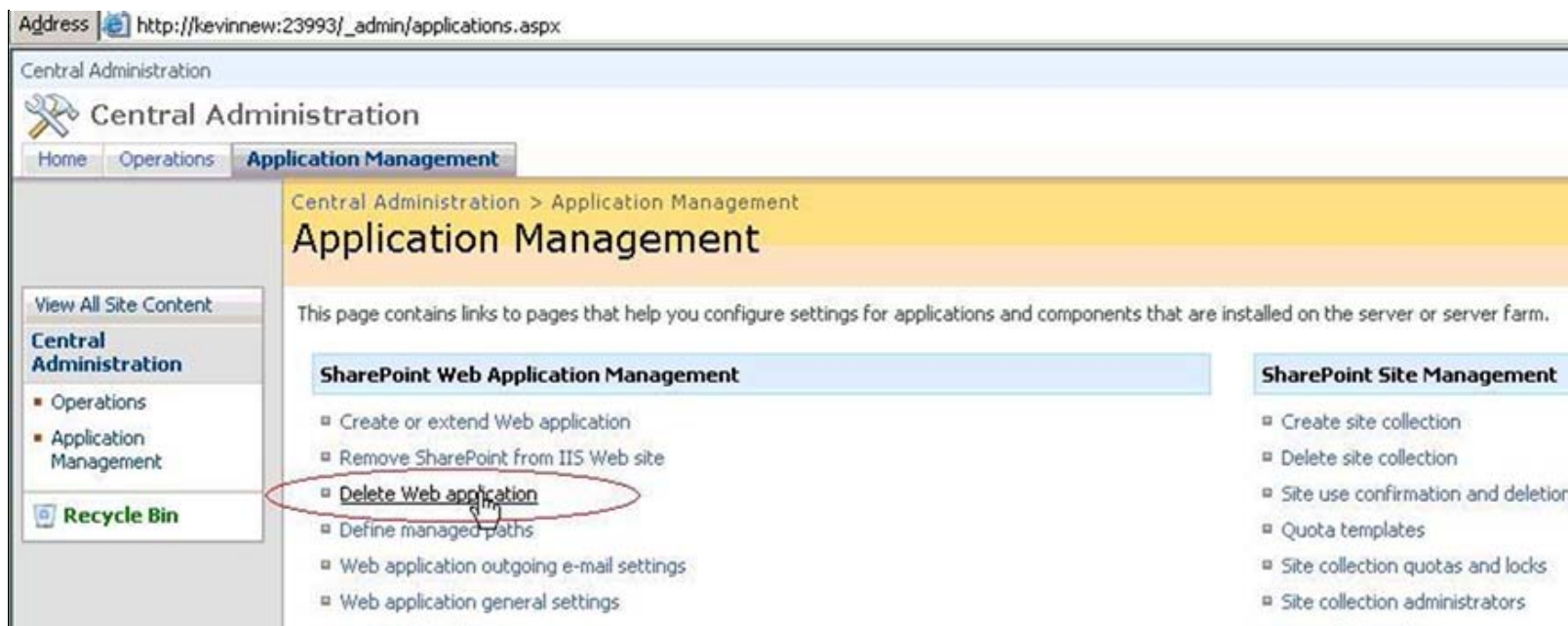


FIGURE 3: APPLICATION MANAGEMENT TAB IN CENTRAL ADMINISTRATION SITE

3. Click **Delete Web application**. The **Select Web Application** page appears. The Delete Web Application pane appears as shown in Figure 4 (below):

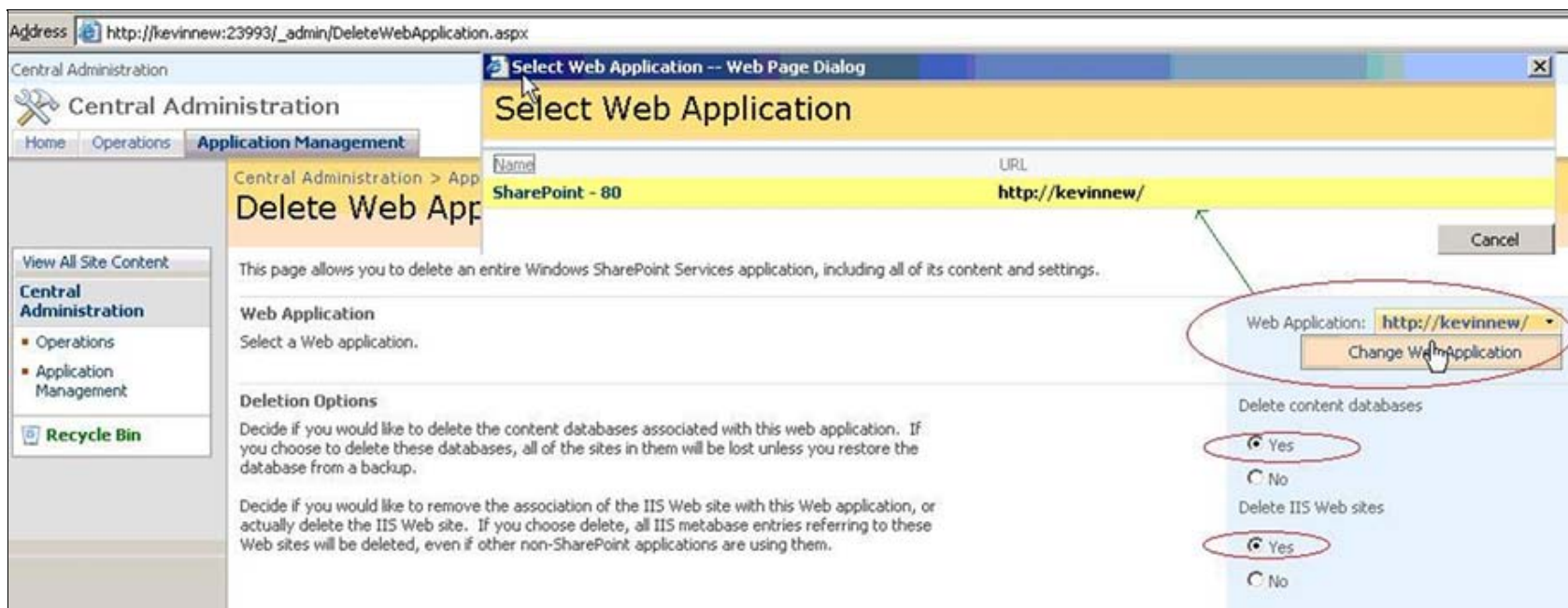


FIGURE 4: DELETE WEB APPLICATION PAGE IN CENTRAL ADMINISTRATION SITE

4. In the Web Application list, click **Change Web Application**. The **Select Web Application** page appears.
5. Select the Windows SharePoint Services 3.0 default Web site **SharePoint - 80** (http://ServerName). Make sure you delete the sharepoint-80

web site: http://ServerName:80

- Under **Delete content databases**, click **Yes**.
- Under **Delete IIS Web sites**, click **Yes**.
- Click **Delete**. When a warning message box appears, click **OK**.
- Wait for the **Application Management** tab to appear, and then close the Windows SharePoint Services Central Administration site.
- Open Internet Information Services (IIS) Manager and check that the **Sharepoint - 80** default website created by SharePoint has been deleted as shown in Figure 5 (below):

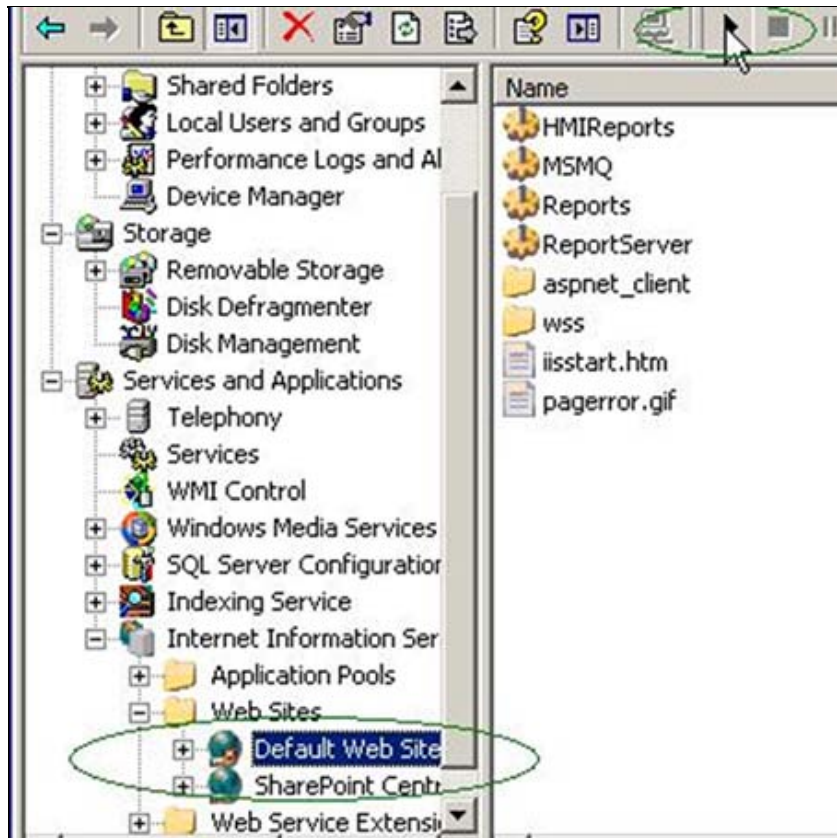


FIGURE 5: INTERNET INFORMATION SERVICES (IIS) MANAGER

- Right-click **Default Web Site**, then **Start the services**.

To run SharePoint Services 3.0, you must create a new website.

Creating a New Website and Site Collection

- From the Start Menu, select **Settings/Control Panel/Administrative Tools/SharePoint 3.0 Central Administration**. The Central Administration site appears as shown in Figure 6 (below):
- Click the **Application Management** tab.

3. Under SharePoint Web Application Management, click **Create or extend web application**.

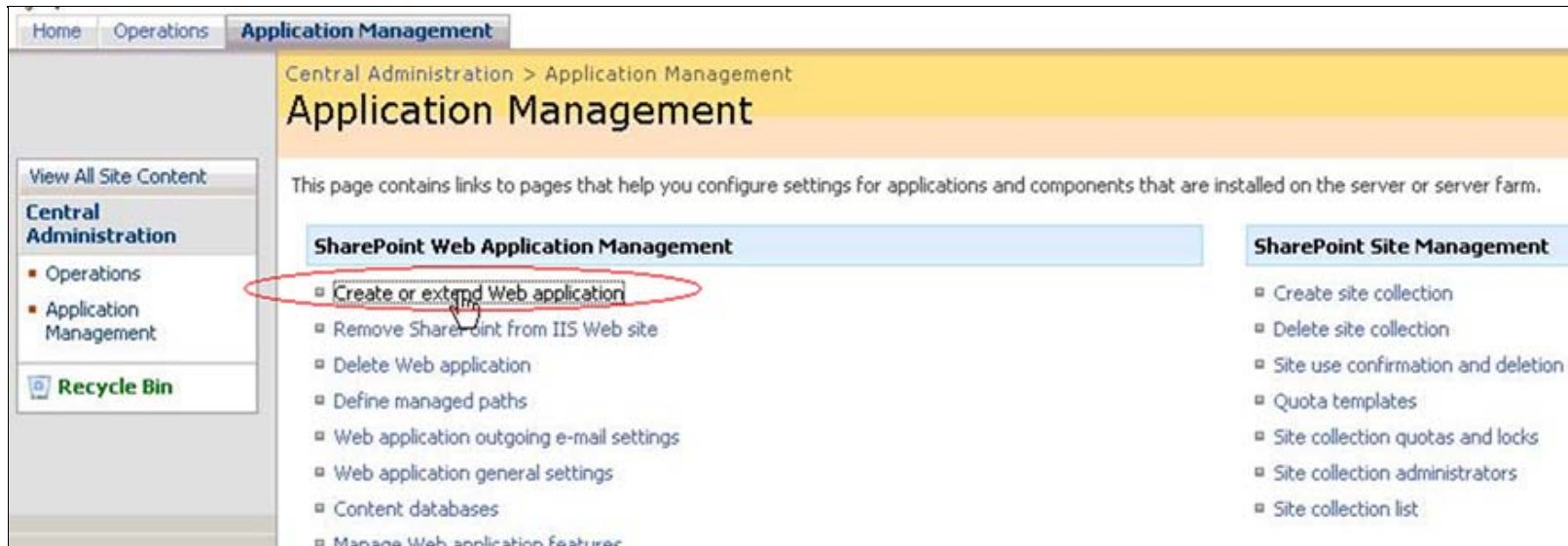


FIGURE 6: APPLICATION MANAGEMENT TAB IN CENTRAL ADMINISTRATION SITE.

The **Create or Extend Web Application** page appears.

4. Click **Create a new Web application**. The **Create New Web Application** page appears.
5. In the IIS Web Site section, click **Use an Existing IIS Web site**. Make sure that Default web site is selected in the list (Figure 7 below).

Use an existing IIS web site
Default Web Site

Create a new IIS web site

Description
Default Web Site

Port
80

Host Header

Path
c:\inetpub\wwwroot

Authentication provider:
 Negotiate (Kerberos)
 NTLM

Allow Anonymous:
 Yes
 No

Use Secure Sockets Layer (SSL):
 Yes
 No

FIGURE 7: CREATE NEW WEB APPLICATION PAGE IN THE APPLICATION MANAGEMENT TAB

6. Click **Create new application pool**.
7. In the **Application Pool** section, click **Predefined** and make sure that Network Service is selected as the security account for the application pool (Figure 8 below).

Use Secure Sockets Layer (SSL):

Yes

No

URL

Zone

Use existing application pool

Create new application pool

Application pool name

Select a security account for this application pool

Predefined

Configurable

User name

Password

FIGURE 8: CREATE NEW APPLICATION POOL

8. In the **Database Name and Authentication** section, make sure that **Windows authentication** is selected (Figure 9 below).

Database Server

Database Name

Database authentication

Windows authentication (recommended)

SQL authentication

Account

Password

Select Windows SharePoint Services search server

FIGURE 9: USE WINDOWS AUTHENTICATION

9. Click **OK** and wait while your changes are processed.
10. Click the **Application Management** tab.
11. In the **Application Management** page, click **Create Site Collection** (Figure 10 below):

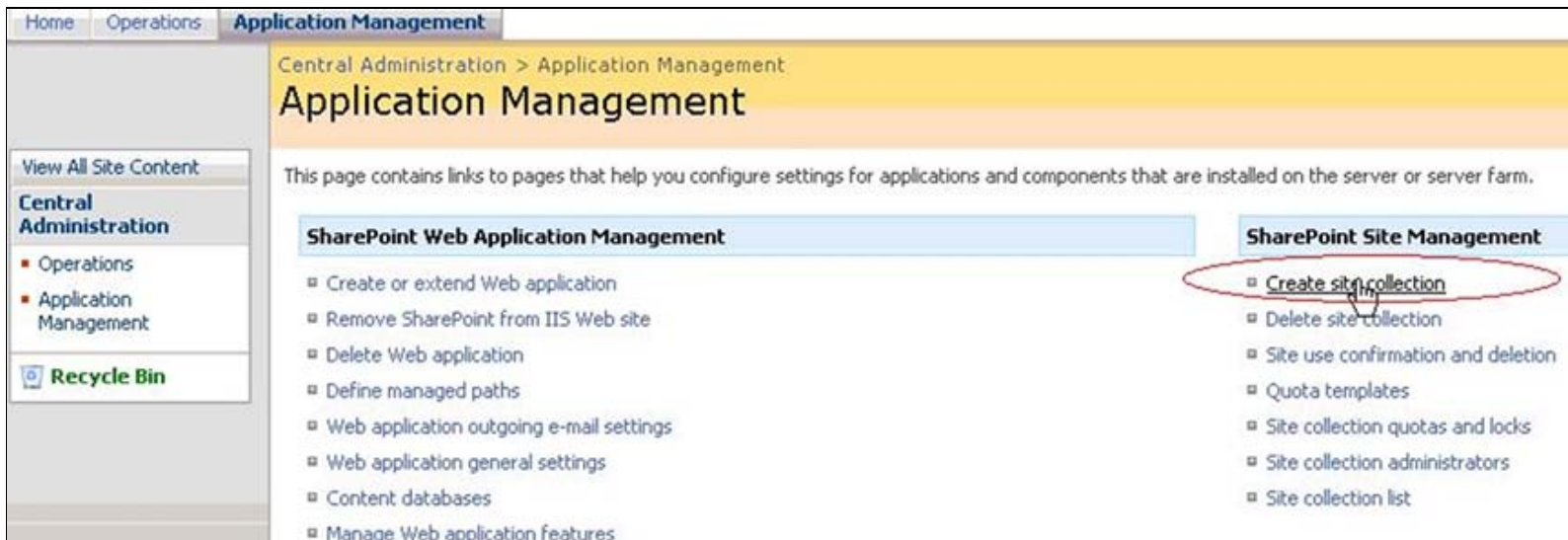
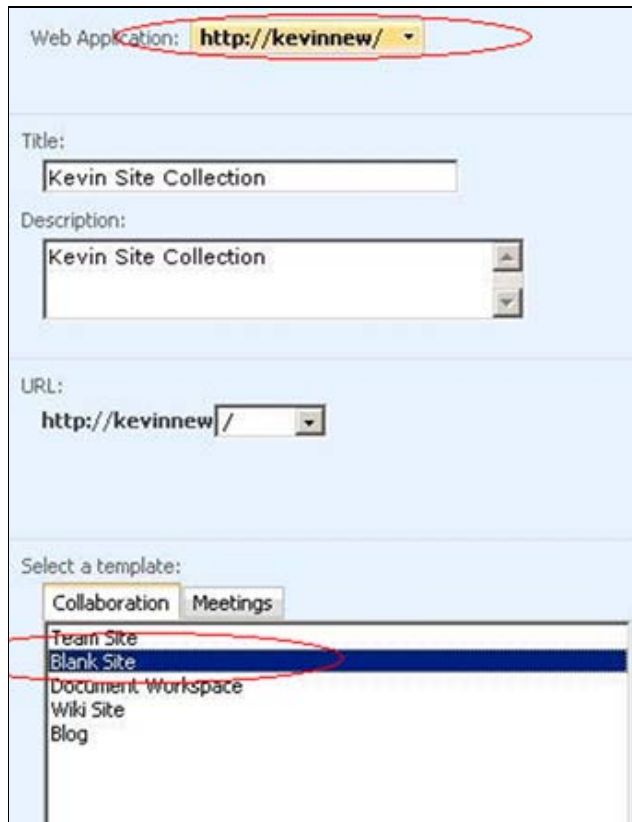


FIGURE 10: APPLICATION MANAGEMENT TAB IN CENTRAL ADMINISTRATION SITE

The **Create Site Collection** page appears.

12. In the **Web Application** section, click **Change Web**.
13. Select the new web application that you created in the previous steps.

- In the **Title** and **Description** sections, type the title and description.
- In the **Template** section, click the **Collaboration** tab and click **Blank Site**.



The screenshot shows a SharePoint site creation form. At the top, the 'Web Application' dropdown is set to 'http://kevinnew/'. Below this, the 'Title' field contains 'Kevin Site Collection' and the 'Description' field also contains 'Kevin Site Collection'. The 'URL' field is set to 'http://kevinnew/'. Under the 'Select a template:' section, the 'Collaboration' tab is selected, and the 'Blank Site' option is highlighted in blue. Other options listed include 'Team Site', 'Document Workspace', 'Wiki Site', and 'Blog'.

FIGURE 11: TITLE, DESCRIPTION, AND TEMPLATE

- In the **Primary Site Collection Administrator** section, specify the user name of the person administering this site (for example, KEVINNEW\archestra).



The screenshot shows the 'Primary Site Collection Administrator' section of the SharePoint site creation form. The 'User name:' field is filled with 'KEVINNEW\archestra'. Below this, there is another empty 'User name:' field. At the bottom, the 'Select a quota template:' dropdown is set to 'No Quota'. Other fields include 'Storage limit:' and 'Number of invited users:'.

FIGURE 12: ADMINISTRATOR USER NAME

- Click **OK** and wait while your changes are processed. The **Top-Level Site...** page appears (Figure 13 below).



FIGURE 13: TOP LEVEL SITE SUCCESSFULLY CREATED

18. Click **OK**.
19. Make sure that you can access the web site as shown in Figure 14 (below):

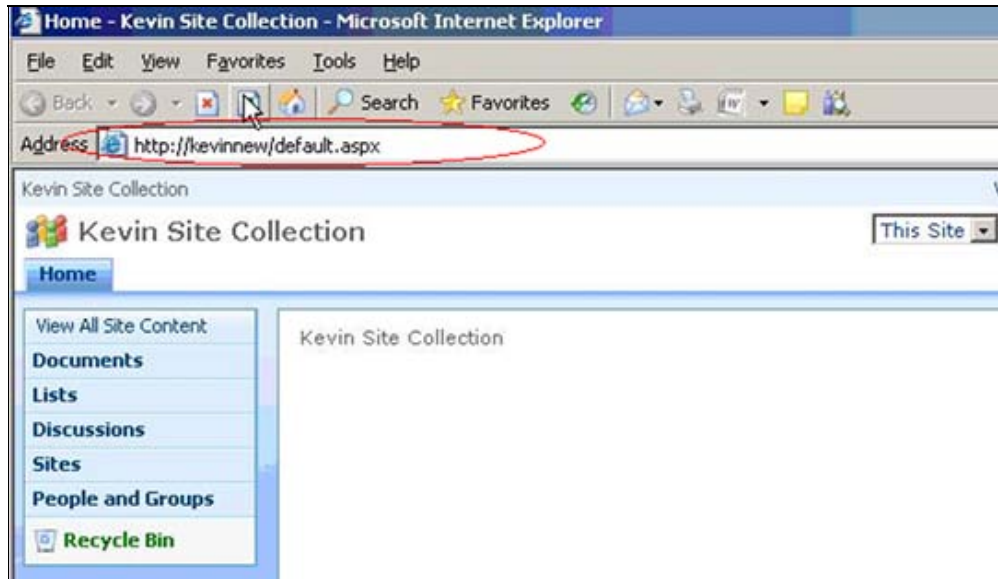


FIGURE 14: SHAREPOINT SITE COLLECTION PAGE

Note: When you uninstall SharePoint Services 3.0, the default website is deleted, which makes the Wonderware Information Server portal inaccessible. Make sure to backup the portal *before* deleting the current SharePoint site.

For more information about this Tech Note refer to **WISInstall.pdf** available in the Wonderware information Server 3.1 CD.

K. Nourbakhsh

Tech Notes are published occasionally by Wonderware Technical Support. Publisher: Invensys Systems, Inc., 26561 Rancho Parkway South, Lake Forest, CA 92630. There is also technical information on our software products at [Wonderware Technical Support](#).

For technical support questions, send an e-mail to support@wonderware.com.

 [Back to top](#)

©2009 Invensys Systems, Inc. All rights reserved. No part of the material protected by this copyright may be reproduced or utilized in any form or by any means, electronic or mechanical, including photocopying, recording, broadcasting, or by any information storage and retrieval system, without permission in writing from Invensys Systems, Inc. [Terms of Use](#).