

Tech Note 622

Configuring the HMI Reports Web Portal for Use

All Tech Notes, Tech Alerts and KBCD documents and software are provided "as is" without warranty of any kind. See the [Terms of Use](#) for more information.

Topic#: 002385

Created: July 2009

Introduction

This *Tech Note* outlines the steps to get the HMI Reports web portal working in order to view HMI Reports in a web browser.

Application Versions

- HMI Reports 3.4
- Windows Server 2003 SP2 and R2

If IIS is not installed on the Server, complete the following steps:

On the Windows 2003 Server Node

1. Open Control Panel and click **Add-Remove Windows Components**.
2. Select the **Application Server** Component.
3. Click the **Details** button. Check **Internet Information Services (IIS)** (Figure 1 below).

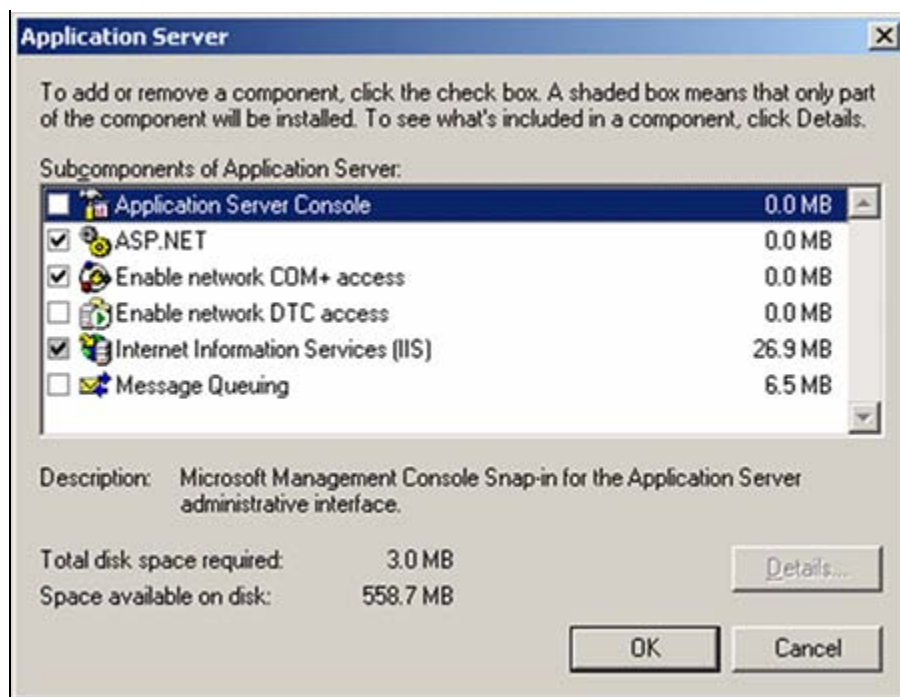


FIGURE 1: APPLICATION SERVER CONFIGURATION DETAILS

4. Click **OK**.

Configuring the HMI Reports Web Portal

Please find below the procedure for Windows 2003:

1. Open up the **IIS Manager** by clicking **Start > Programs > Administrative Tools > Internet Information Services (IIS) Manager**.
2. Expand the tree on the left panel.
3. Click **Web Service Extensions**.

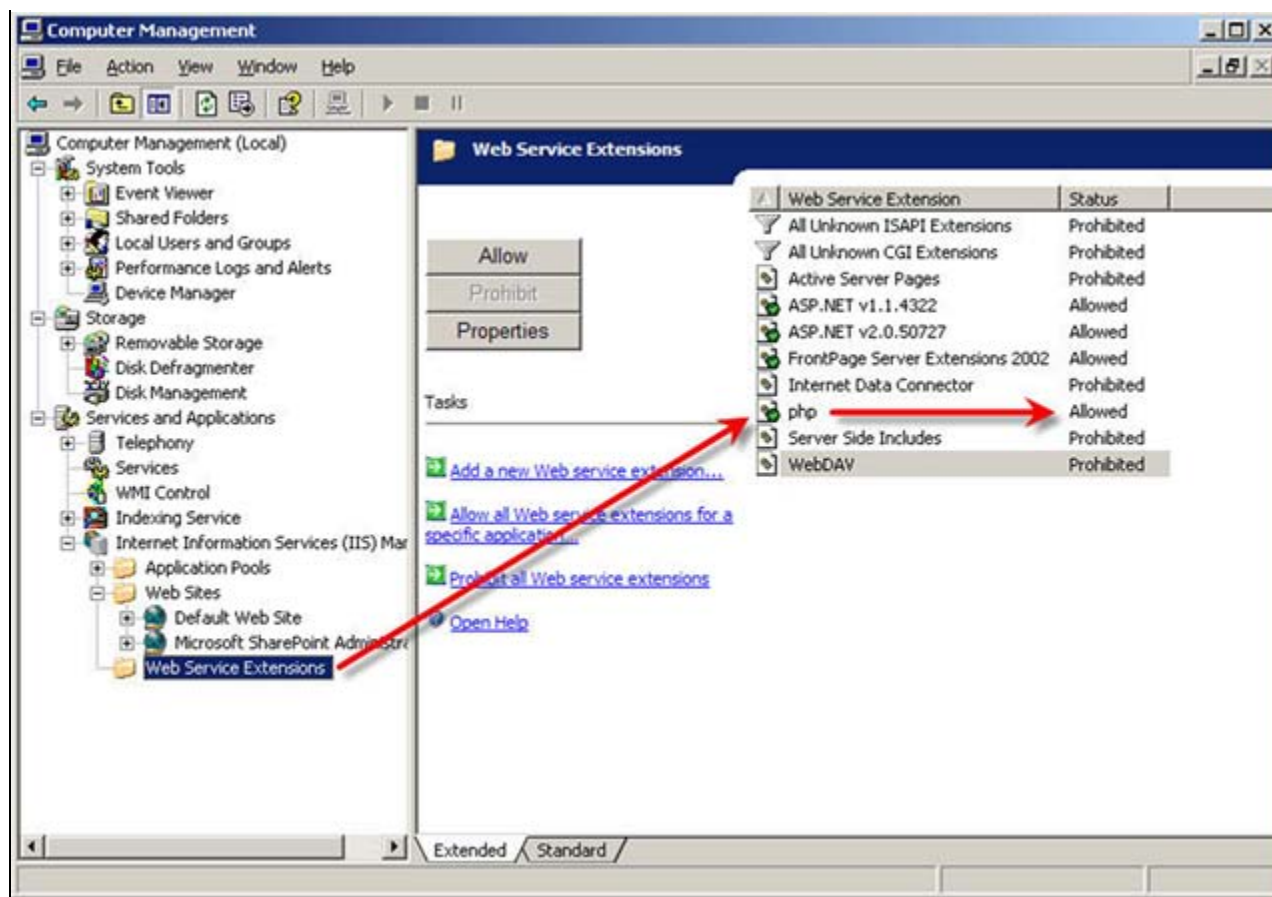


FIGURE 2: CONFIGURE WEB SERVICE EXTENSIONS

4. Double-click **php** from the right frame to show the properties dialog box.
5. Click **Required Files**, then click **Add** and browse to **C:\PHP**.
6. Select **php5isapi.dll** and click **OK**.
7. Click **Add** again and browse to the executable file at **C:\PHP\php-cgi.exe** and click **OK**. This is the default file defined during the installation process.

Note: *Both* files are required.

8. Click **OK**.
9. Expand the **Web Sites** element in the left panel.
10. Right-click the Default Web Site node, and select **Properties**.
11. Click the **Home Directory** tab.
12. Click **Configuration**.

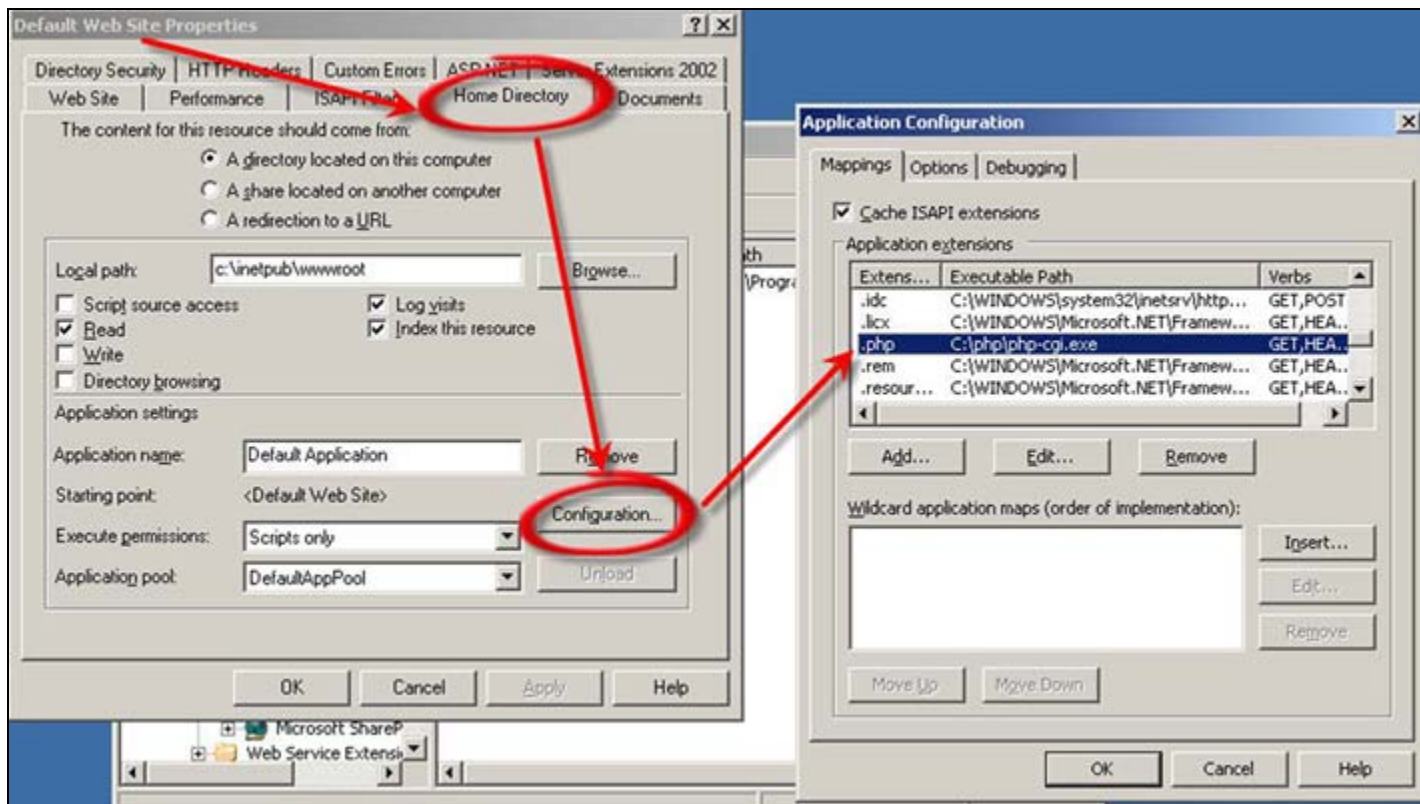


FIGURE 3: CONFIGURING DEFAULT WEB SITE PROPERTIES

13. If you do *not* see the .php extension click **Add** in order to add the extension to the list.

Otherwise, click **Edit** and complete the following steps.

14. Browse to **C:\PHP\php5isapi.dll** and click **OK**.

15. Browse to the executable at **C:\PHP\php-cgi.exe** and click **OK**. This is the default file defined during the installation process.

Note: *Both* files are required.

16. For the Extension, select **.php** (Figure 4 below).

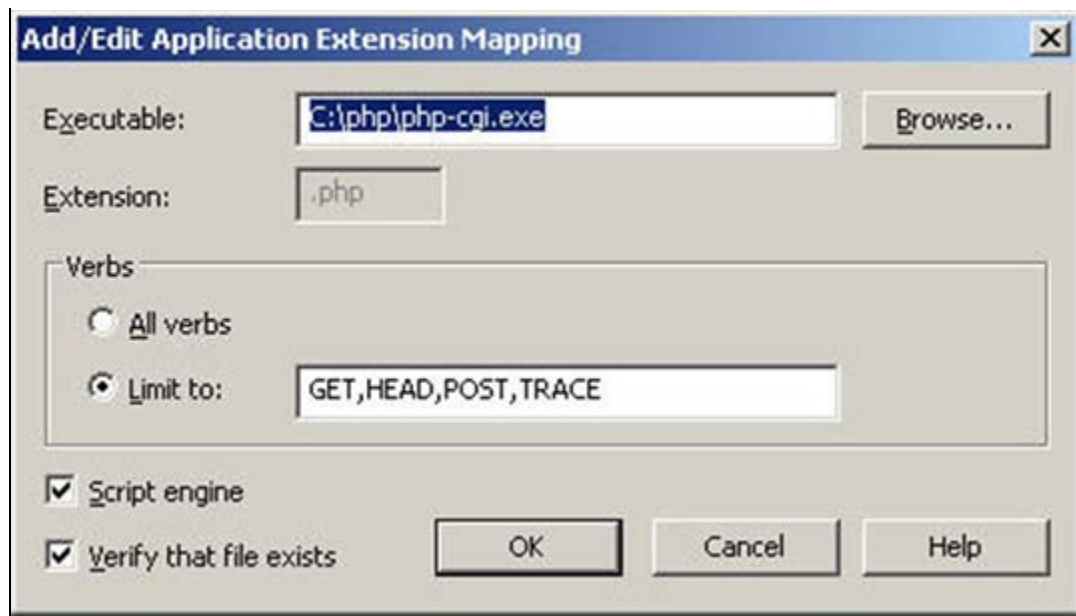


FIGURE 4: ADD/EDIT APPLICATION EXTENSION MAPPING

17. Click the **Verify file exists** option.
18. Click **OK** and close all the dialogs.
19. From the command prompt, run the **iisreset** command in order to reload Internet Information Services settings.
20. Exclude HMIReports virtual directory from the SharePoint management portal if SharePoint is installed.

It should now be possible to view all the reports generated or generate new reports from the HMI Reports Web Portal.

B. Shah

Tech Notes are published occasionally by Wonderware Technical Support. Publisher: Invensys Systems, Inc., 26561 Rancho Parkway South, Lake Forest, CA 92630. There is also technical information on our software products at [Wonderware Technical Support](#).

For technical support questions, send an e-mail to support@wonderware.com.

 [Back to top](#)

©2009 Invensys Systems, Inc. All rights reserved. No part of the material protected by this copyright may be reproduced or utilized in any form or by any means, electronic or mechanical, including photocopying, recording, broadcasting, or by any information storage and retrieval system, without permission in writing from Invensys Systems, Inc.

[Terms of Use](#).