

[Tech Note 682](#)

Installing Microsoft® SQL Server 2008 for Wonderware Historian v10.0

All Tech Notes, Tech Alerts and KBCD documents and software are provided "as is" without warranty of any kind. See the [Terms of Use](#) for more information.

Topic#: 002451
Created: February 2010
Updated: May 2010

Introduction

This *Tech Note* provides step-by-step procedures to install SQL Server 2008 on a **32- or 64-bit** Operating System.

Wonderware Historian version 10.0 supports both 32-bit and 64-bit Windows Server 2008 SP2 and Vista SP2 (Ultimate, Business, and Enterprise) **Operating System** editions. However, at the time of release, Historian 10.0 *only* supports **Microsoft SQL Server 2005 and 2008 32-bit version**. You can use Historian with other Wonderware products requiring 32-bit SQL Server such as Wonderware Information Server version 3.1.

Note: Support for 64-bit versions of SQL Server is planned for a future Historian release.

You should allow approximately 1 hour to complete the installation.

Application Versions

• Wonderware Historian 10.0

The following operating systems are supported by Wonderware Historian Server 10.0:

- Windows Server 2003 Standard Edition SP2
- Windows Server 2003 Standard Edition R2 SP2
- Windows Server 2003 Enterprise Edition SP2
- Windows Server 2003 Enterprise Edition R2 SP2
- Windows Server 2008 SP2 Standard and Enterprise Editions (32-bit and 64-bit)
- Windows Vista SP2 Ultimate, Business, and Enterprise Editions (32-bit and 64-bit)

Microsoft SQL Server 2008:

- SQL Server 2008 32-bit SP1 Enterprise Edition
- SQL Server 2008 32-bit SP1 Express

- SQL Server 2008 32-bit SP1 Standard Edition
- SQL Server 2005 32-bit SP3 Standard Edition

Installing SQL Server 2008

1. Insert the SQL Server 2008 installation DVD into your DVD drive. If the autorun feature on your DVD drive does not launch the installation program, navigate to the root of the DVD and double-click **Setup.exe**. You will see the **SQL Server Installation Center**:

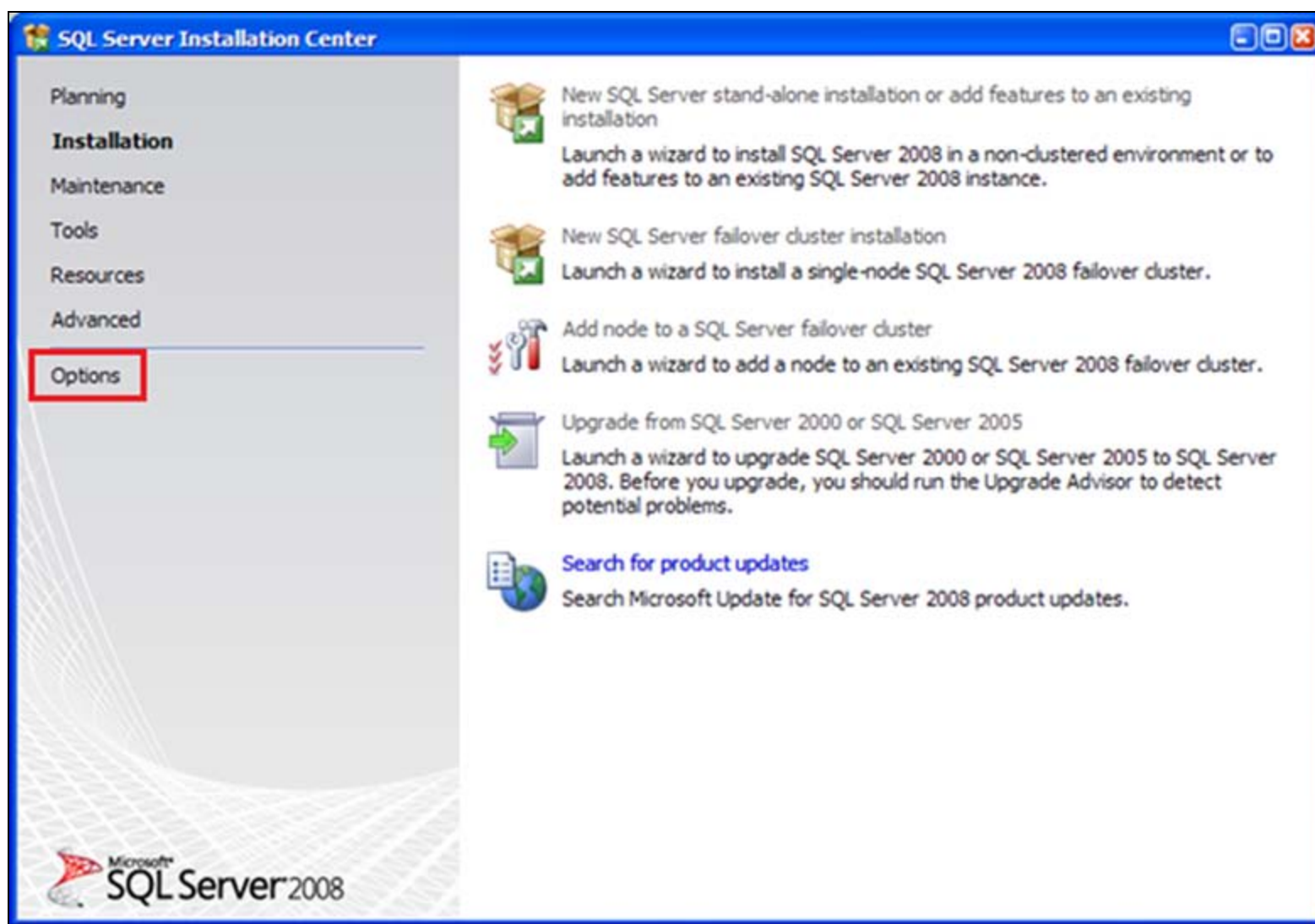


FIGURE 1: SQL SERVER INSTALLATION CENTER

If you click **New SQL Server stand-alone...** you will install the unsupported 64-bit version.

2. Click the **Options** item and select the **x86 Processor Type** (Figure 2 below). **This option installs the 32-bit architecture version of SQL Server.**

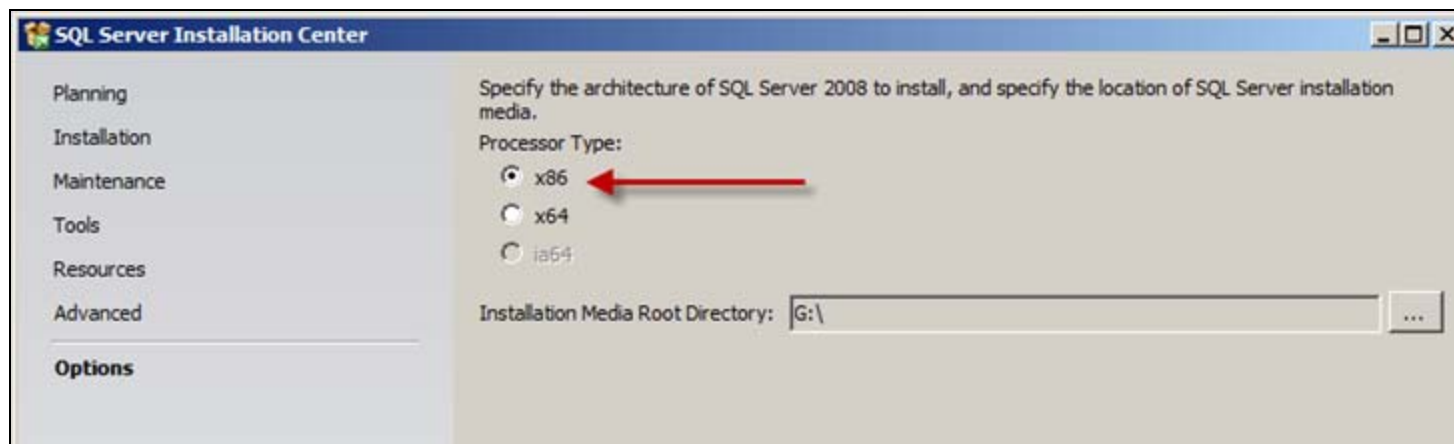


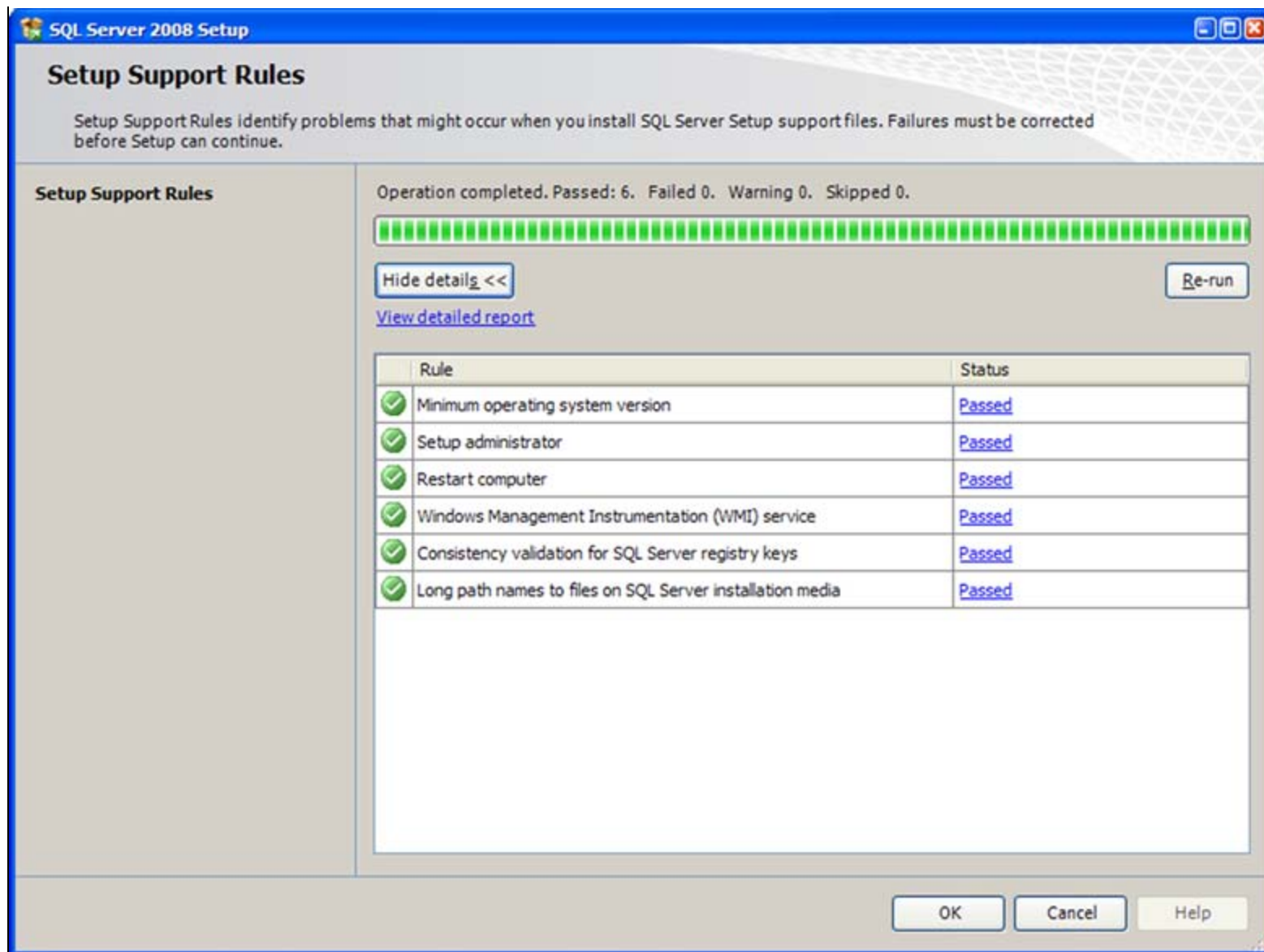
FIGURE 2: x86 PROCESSOR TYPE OPTION

3. Click **Installation** and then **New SQL Server stand-alone...** (Figure 1 above) to install the 32-bit SQL Server 2008.

This installation will now run the Setup Support Rules operation. This operation identifies problems that can happen during the installation of SQL Server Setup Support files.

You must correct all the problems before the install can continue. After the operation completed, all the setup support rules must be passed.

- Click the **Show Details** button to see the status of the rules (Figure 3 below).

**FIGURE 3: COMPLETED SETUP SUPPORT RULES**

4. To continue, click **OK**.
5. On the **Setup Support Files** screen, click **Install** to continue with the support files installation.

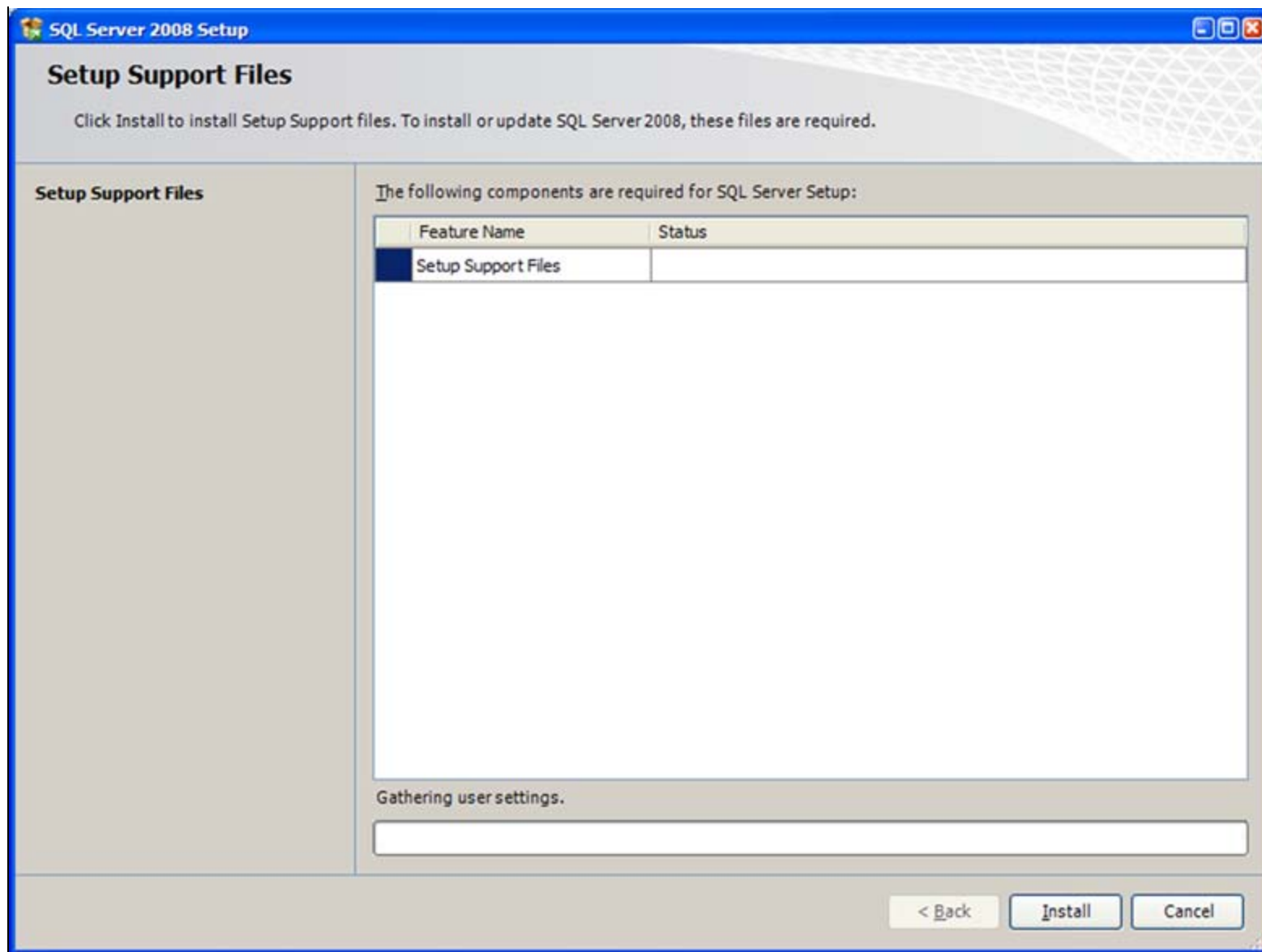


FIGURE 4: SUPPORT FILES INSTALLATION

6. When the Support File installation is finished, click **Next**.

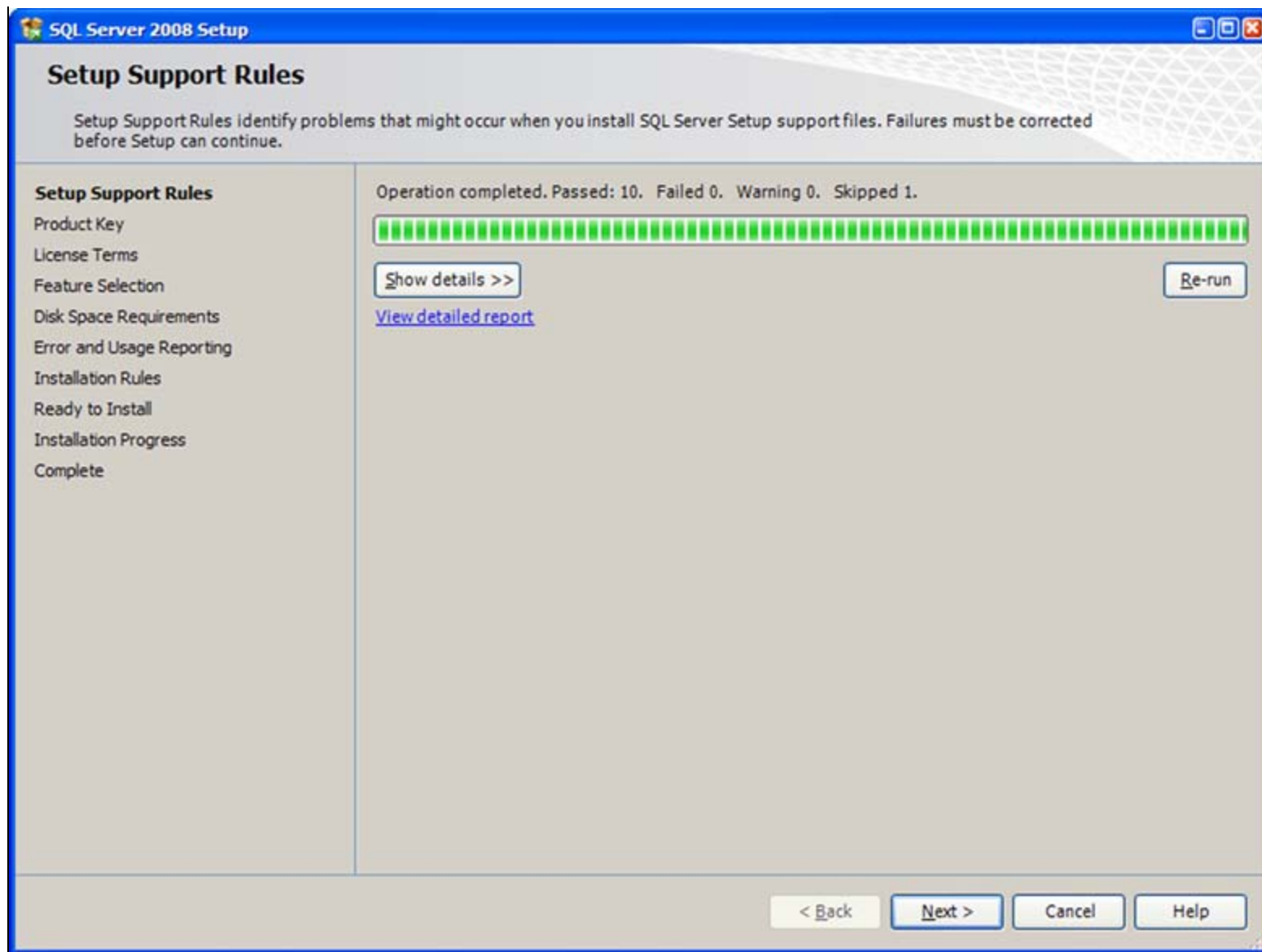


FIGURE 5: SETUP SUPPORT FILES INSTALLATION COMPLETED

7. On the **Product Key** dialog box, click the **Enter the product key** option. The embedded product key should appear in the field.

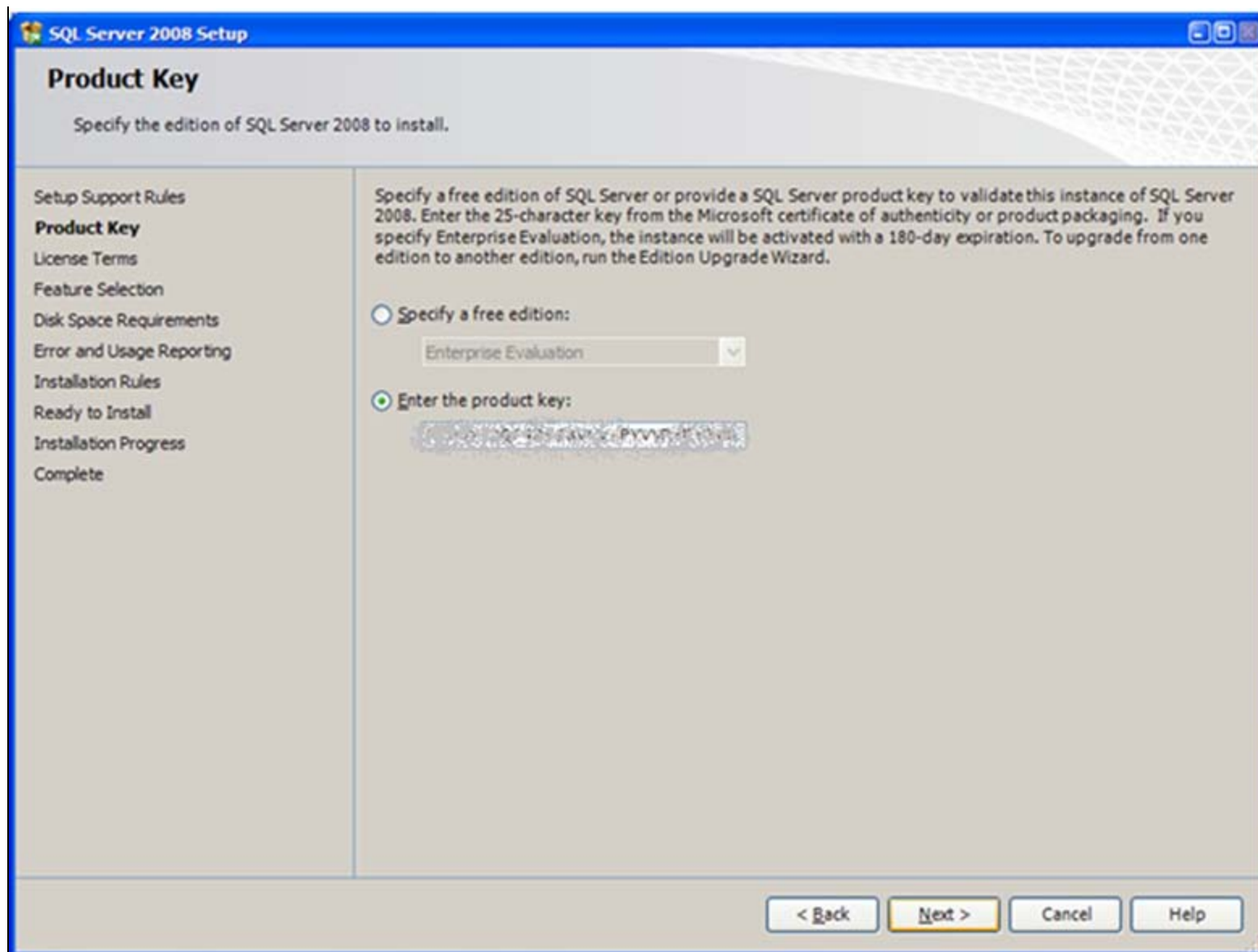


FIGURE 6: EMBEDDED PRODUCT KEY

8. Click **Next**.
9. Review the licence terms, and if you agree, click **I Accept the License Terms** and click **Next**.

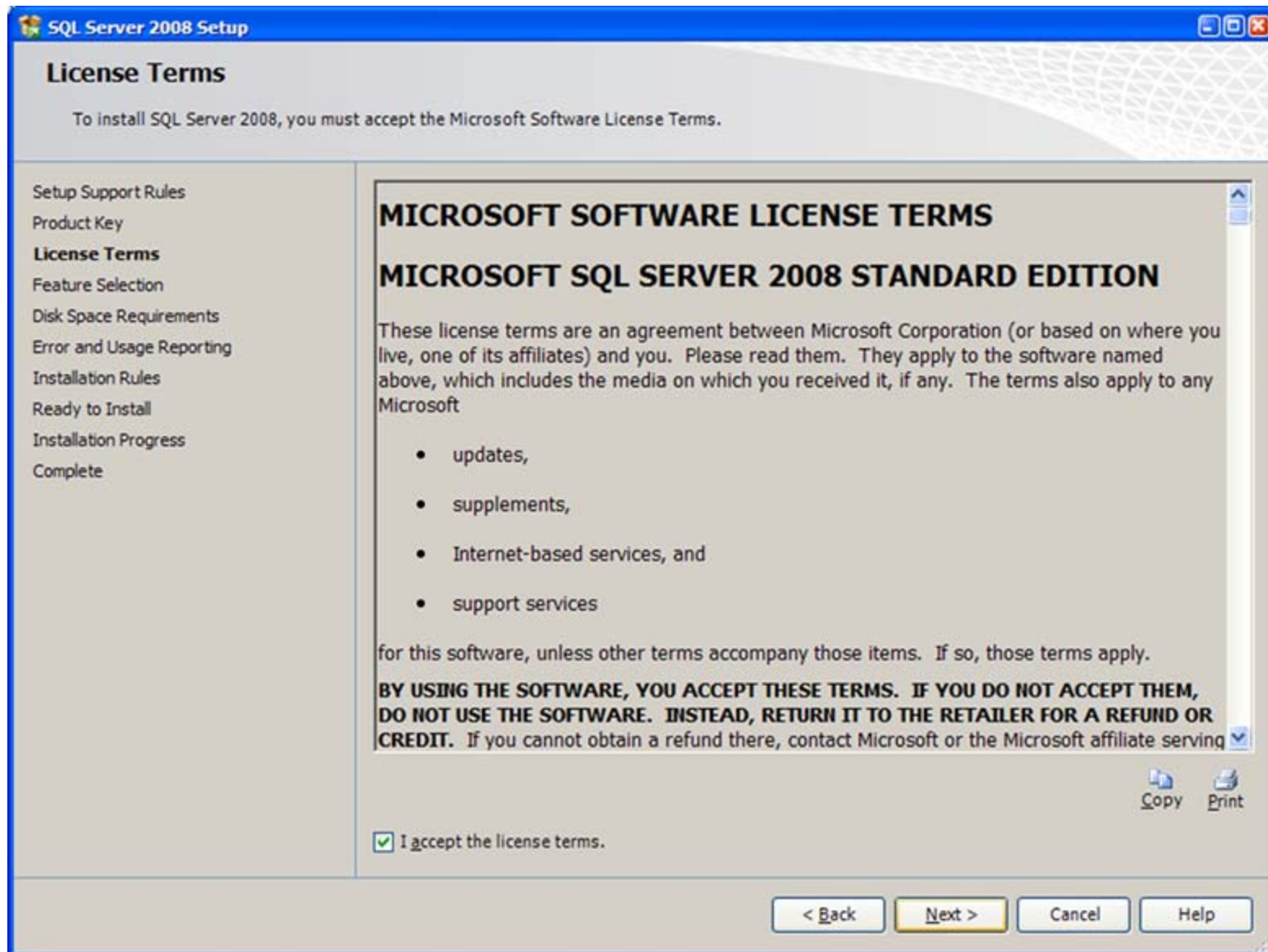


FIGURE 7: ACCEPT LICENSE TERMS

10. Select the features shown in Figure 8 (below). **Analysis** and **Reporting** Services (for WIS integration) are *optional* selections. **SQL Server Replication** and **Full Text Search** are also optional selections that do not impact Historian functionality.

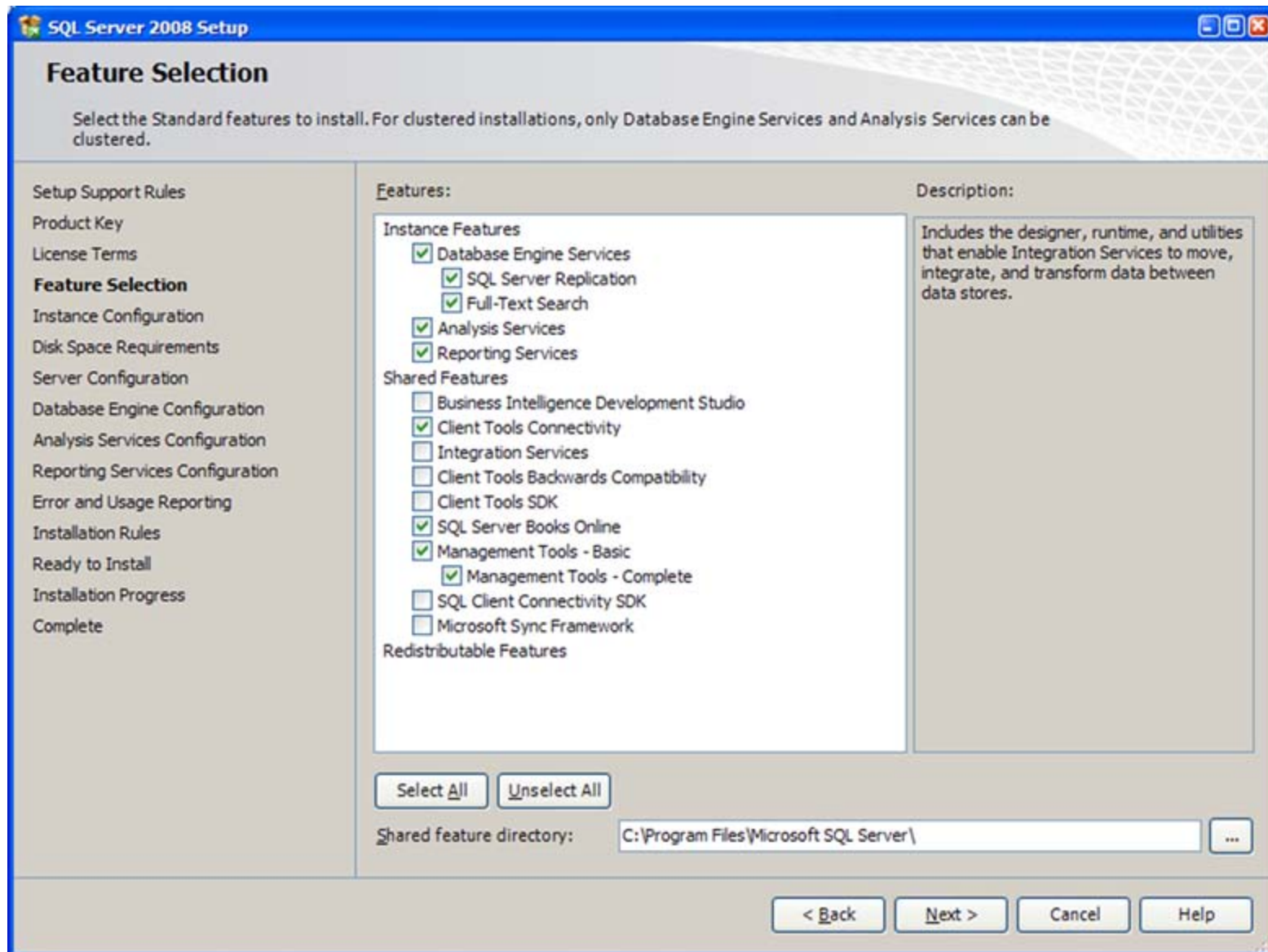


FIGURE 8: SELECT FEATURES

11. Click **Next**.

This example includes **Reporting Services** because the Wonderware Information Server is installed later.

12. On the **Instance Selection** dialog box, select the **Default** Instance (Figure 9 below). Wonderware Products **do not support** Named Instances.

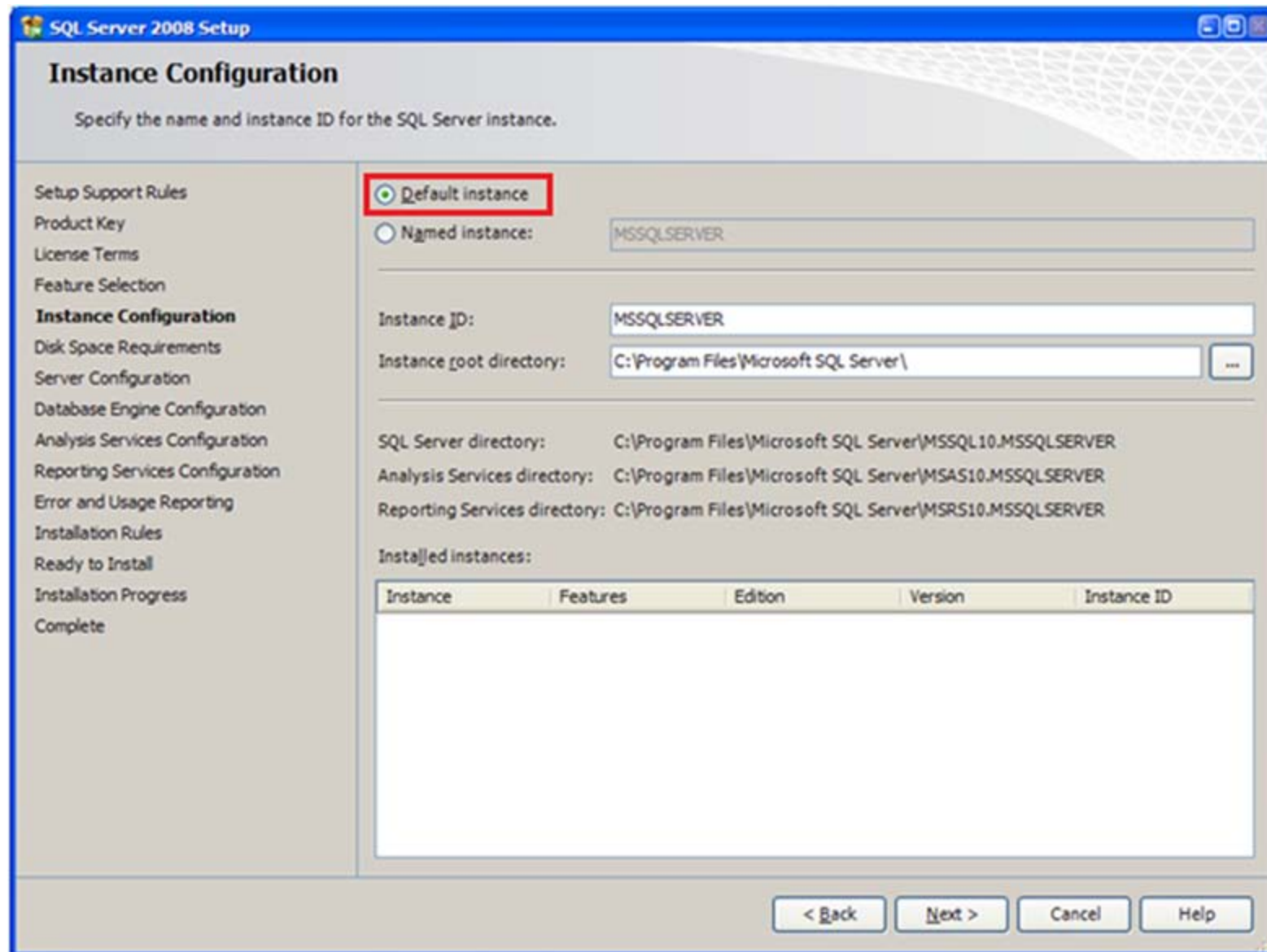


FIGURE 9: DEFAULT INSTANCE

Accept the default **Instance ID** and **Instance Root Directory**.

13. Click **Next**.

Note: MS SQL 2008 Express Edition is supported for Historian 10.0. If you are installing MS SQL 2008 Express, make sure it actually installs the Default instance.

There is an issue in the Express install that even if you select the Default instance required by the Wonderware Historian, it still results in the database engine being installed as the instance named **SOLEXPRESS**.

As a workaround, you can select the option to install a Named instance and enter **MSSQLSERVER** as the instance name (see the information about **CR L00090827** in the Historian's Readme.html file).

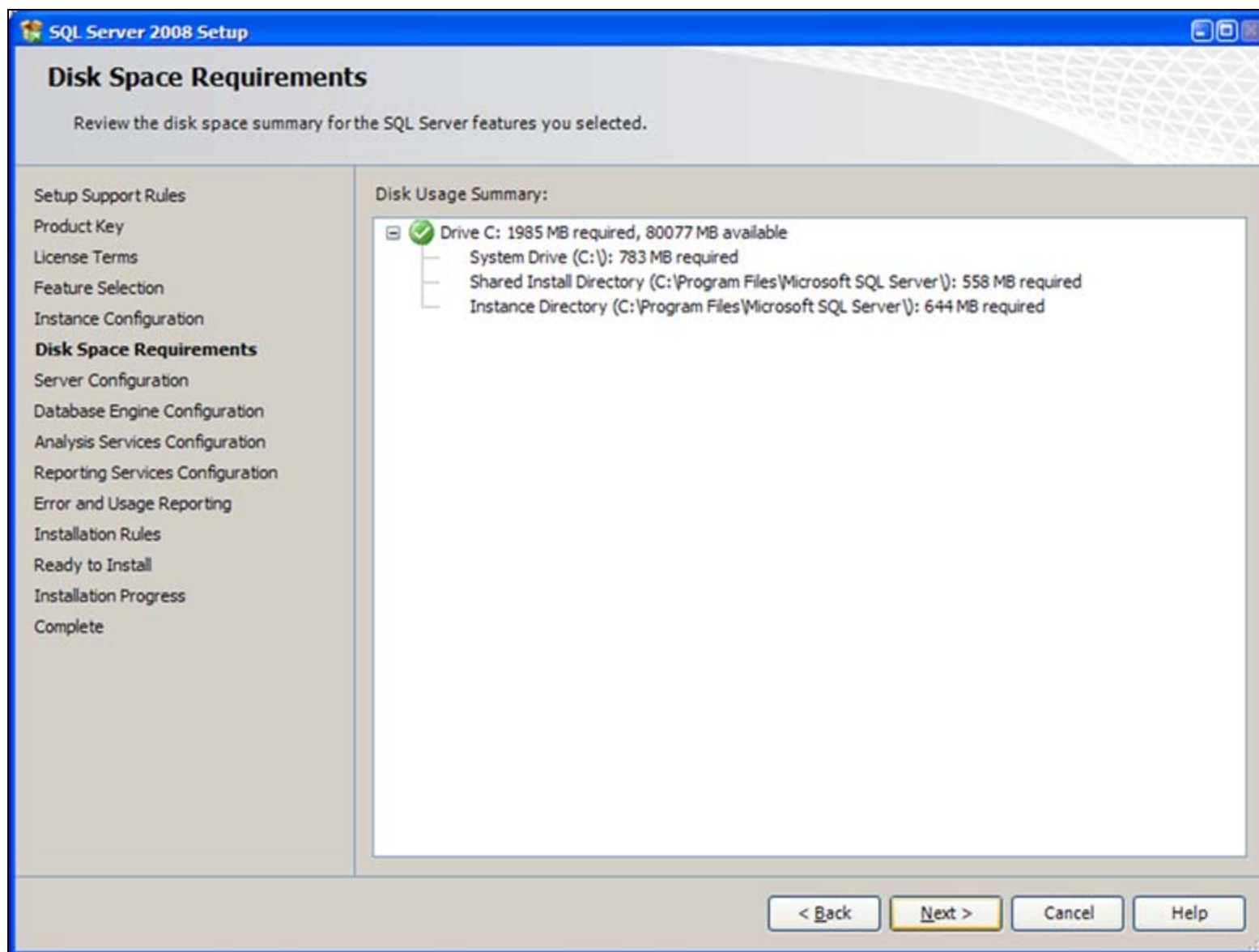


FIGURE 10: DISK SPACE REQUIREMENTS

14. Confirm the Disk Space Requirements and click **Next**.
15. In the **Server Configuration** window, click **Use the same account for all SQL Server services**, then select **NT Authority\System** from the drop-down list (Figure 11 below).

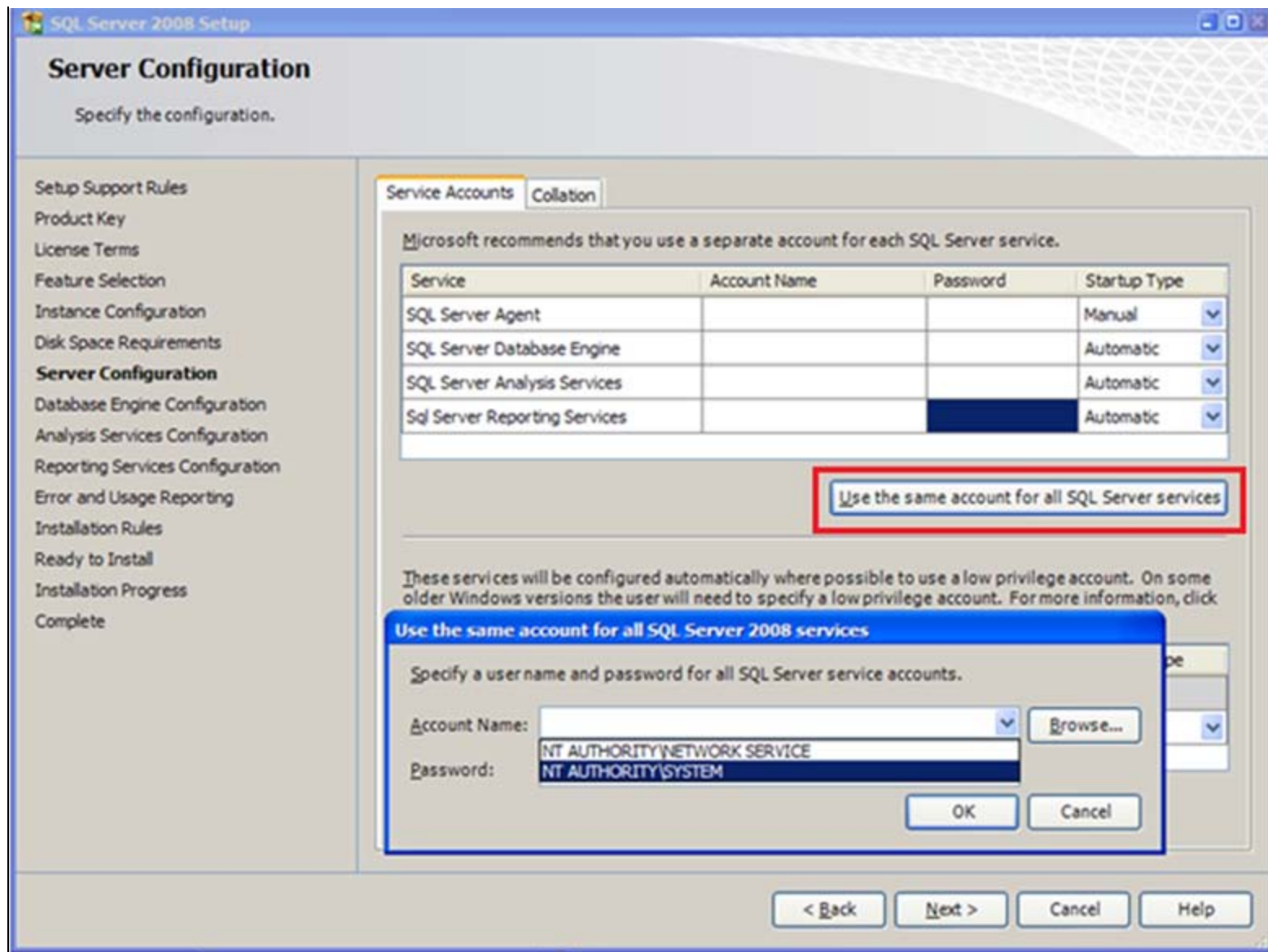


FIGURE 11: SERVER CONFIGURATION

16. Click **OK** then **Next**.
17. On the **Database Engine Configuration** screen, select the **Mixed Mode** (SQL Server authentication and Windows Authentication) in the **Account Provisioning** tab (Figure 12 below). Mixed Mode (SQL Server authentication and Windows authentication) is recommended but optional.
18. Then type a password for the built-in SQL System Administrator account (**sa**). Configure the sa-level with a strong password for security purposes.
19. Click **Add** to add any users who you want to have administrator rights when using Windows authentication. In this example, a

domain account and the Administrator user are visible.

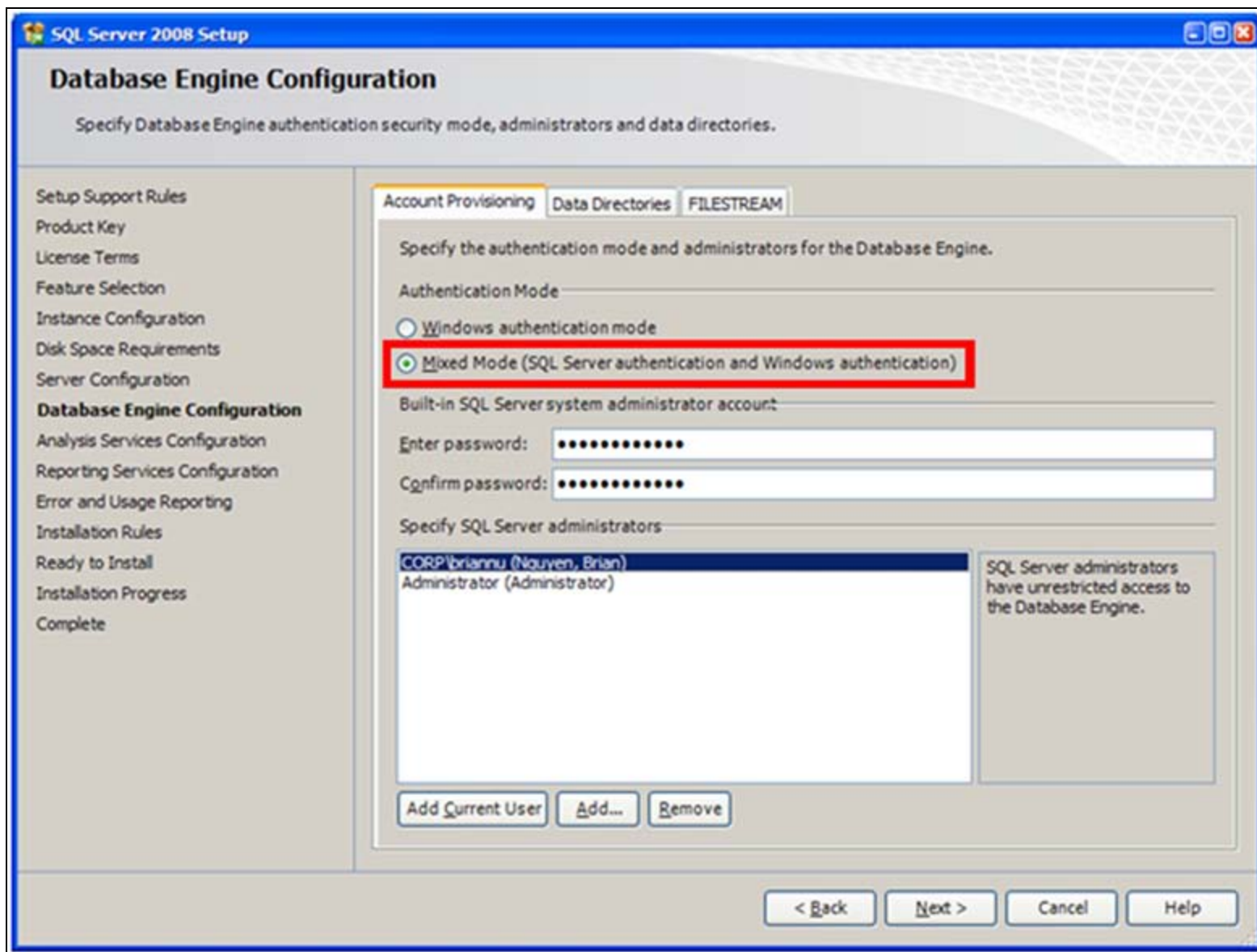


FIGURE 12: DATABASE ENGINE CONFIGURATION

20. Click the **Data Directories** tab to review all the directories then click **Next** (Figure 13 below).

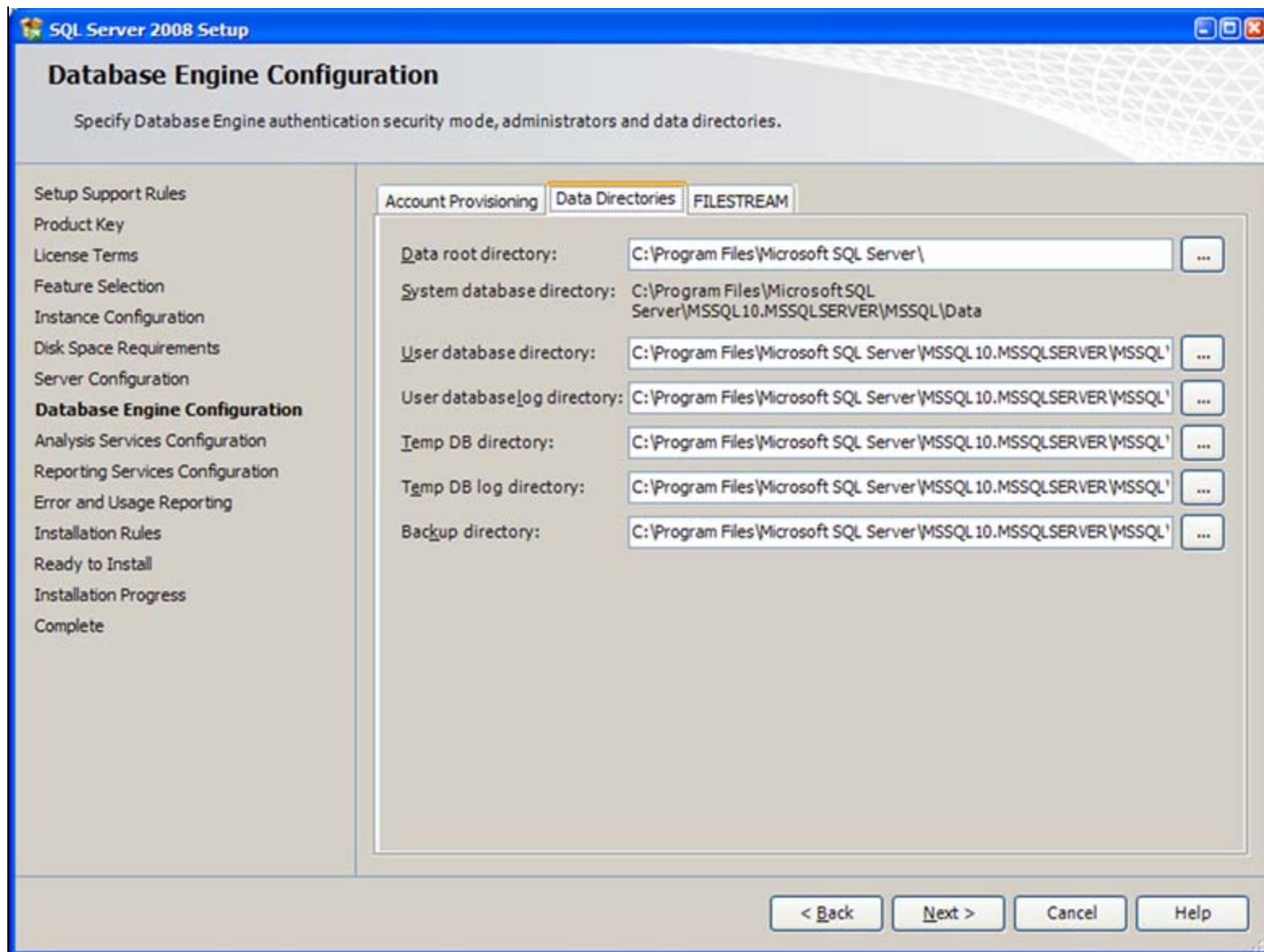


FIGURE 13: DATABASE ENGINE CONFIGURATION > DATA DIRECTORIES

21. On the Analysis Services Configuration window, click **Add** to specify the users to have administrative permissions for Analysis Services.

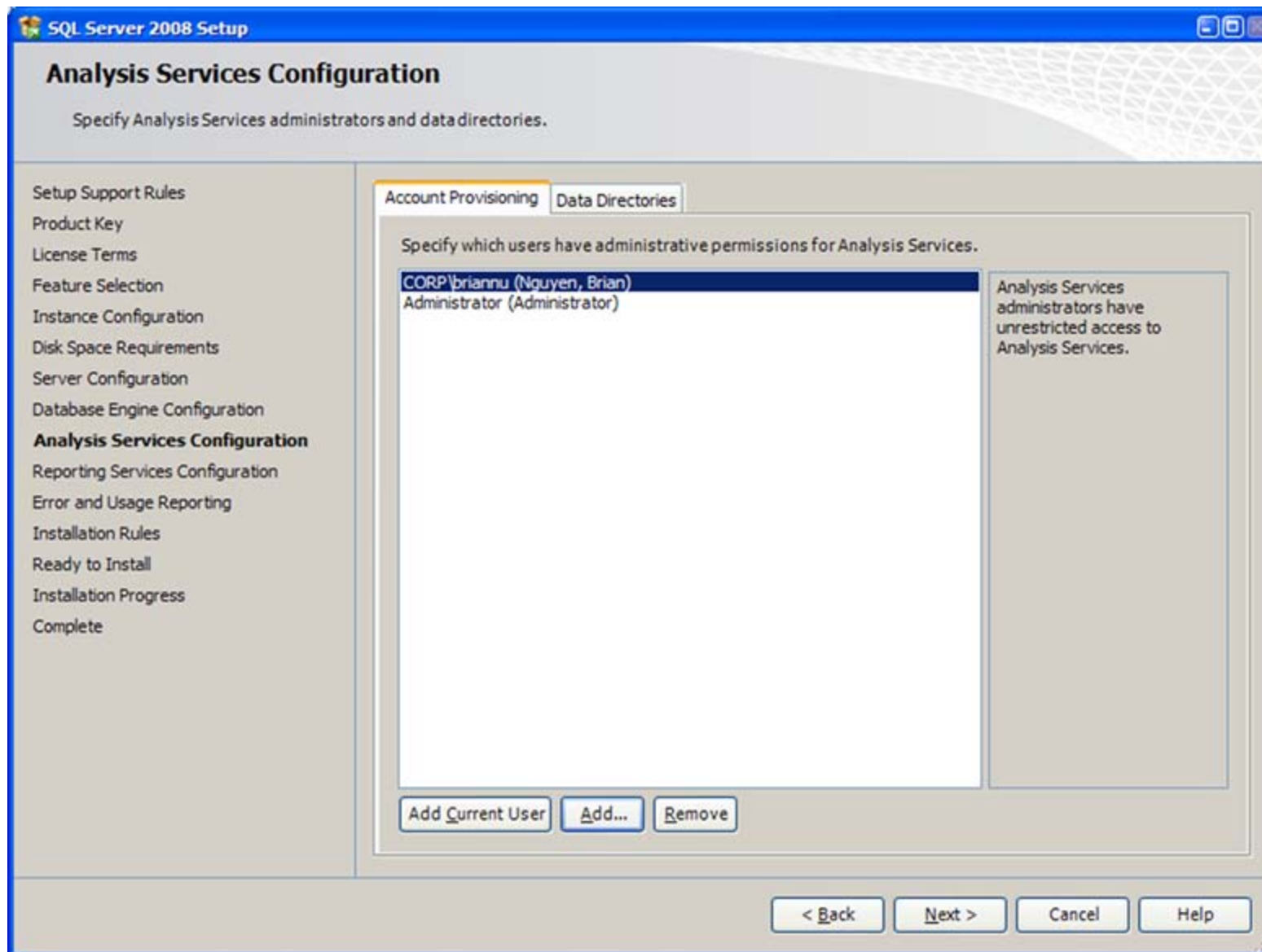


FIGURE 14: ANALYSIS SERVICES CONFIGURATION

22. Click the **Data Directories** tab to examine the folder.

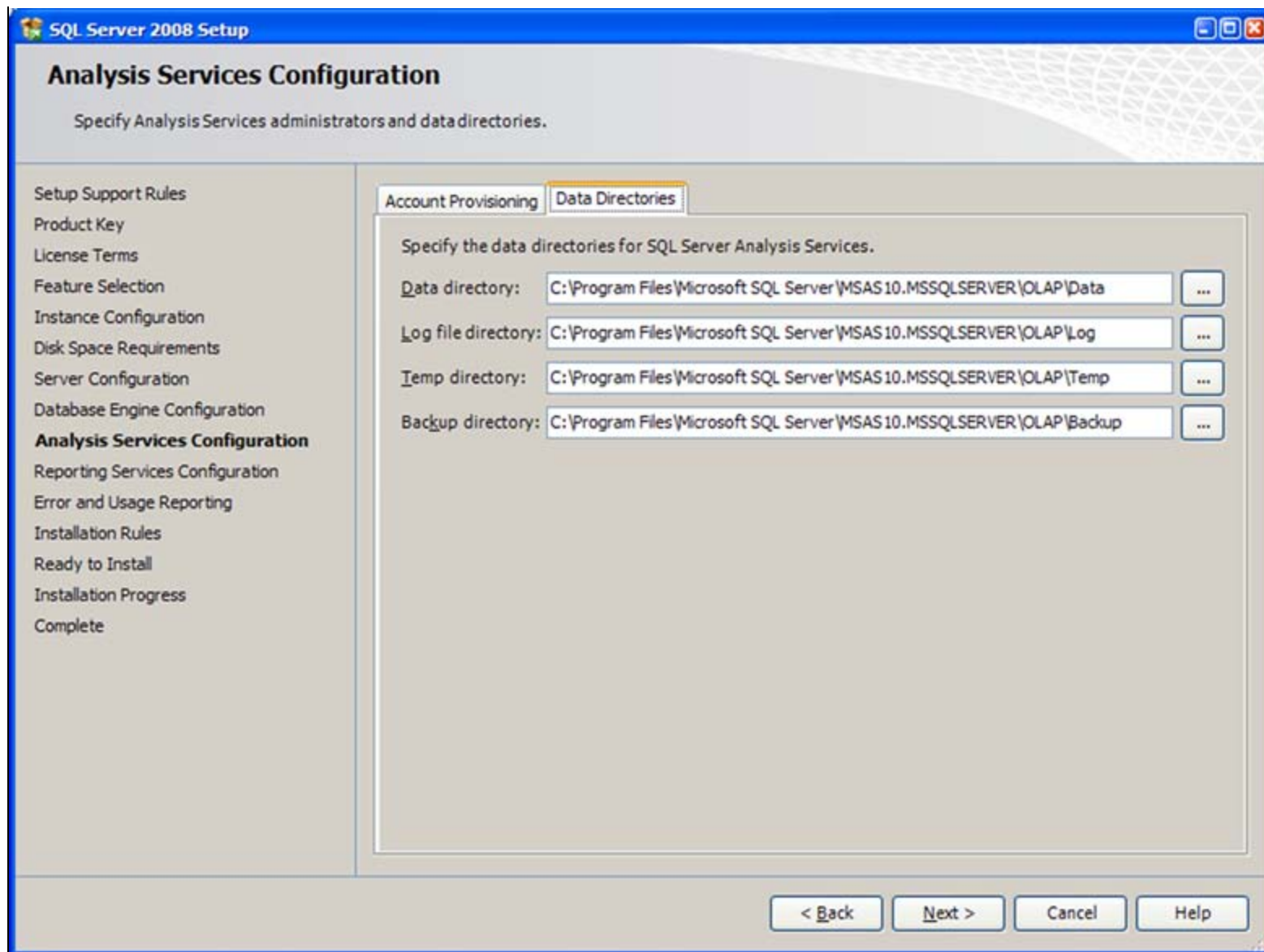


FIGURE 15: ANALYSIS SERVICES CONFIGURATION > DATA DIRECTORIES

23. Click **Next**.
24. On the Reporting Services Configuration, click **Install the native mode default configuration** option and click **Next** (Figure 16 below). In this example, Wonderware Information Server is used as the native mode.

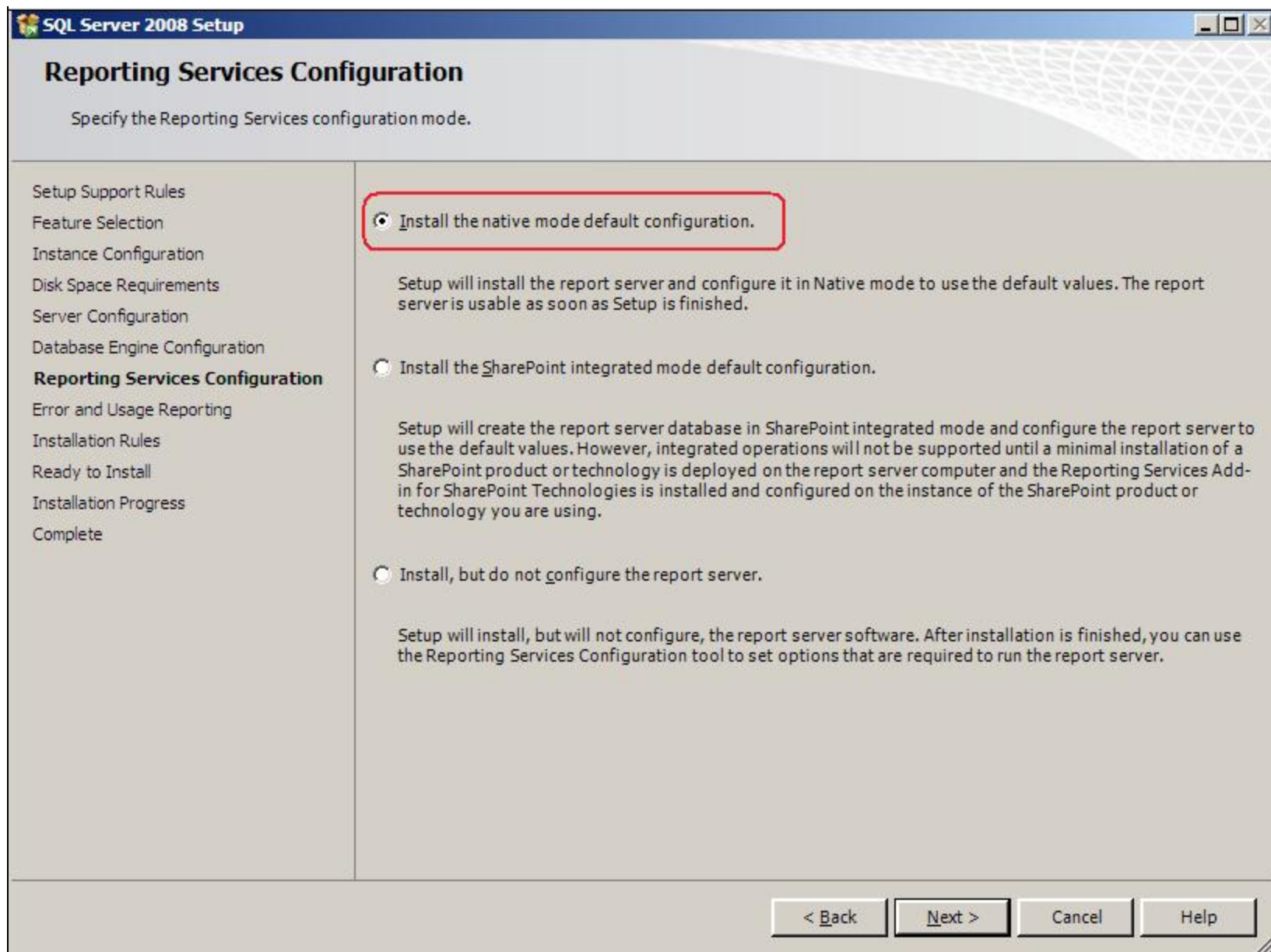


FIGURE 16: REPORTING SERVICES CONFIGURATION

25. Accept the default settings for the rest of the installation sequence. The installation will then proceed and you will see each module install.

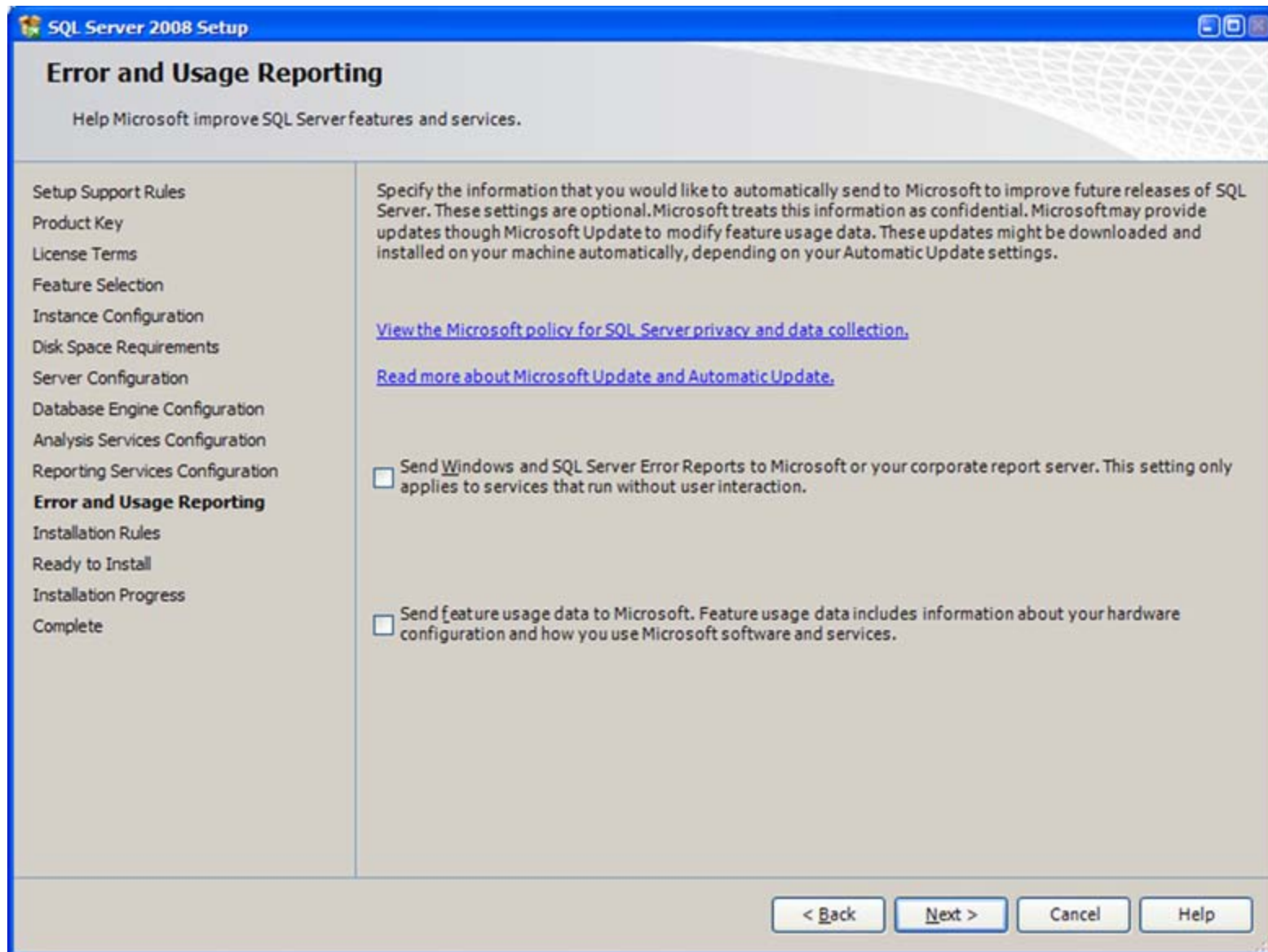


FIGURE 17: ERROR AND USAGE REPORTING

26. When the Installation completes, click the **Show details** button.

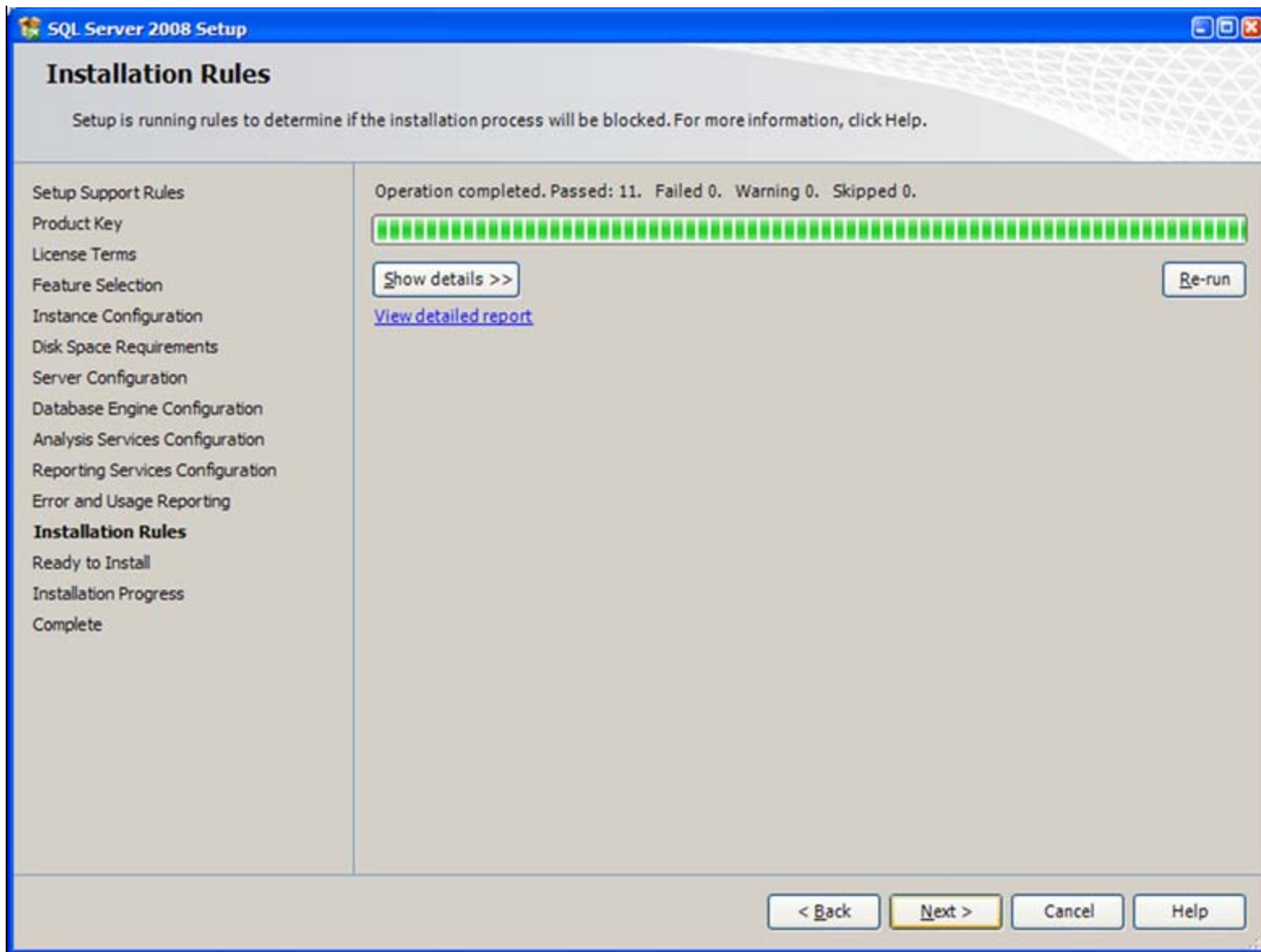
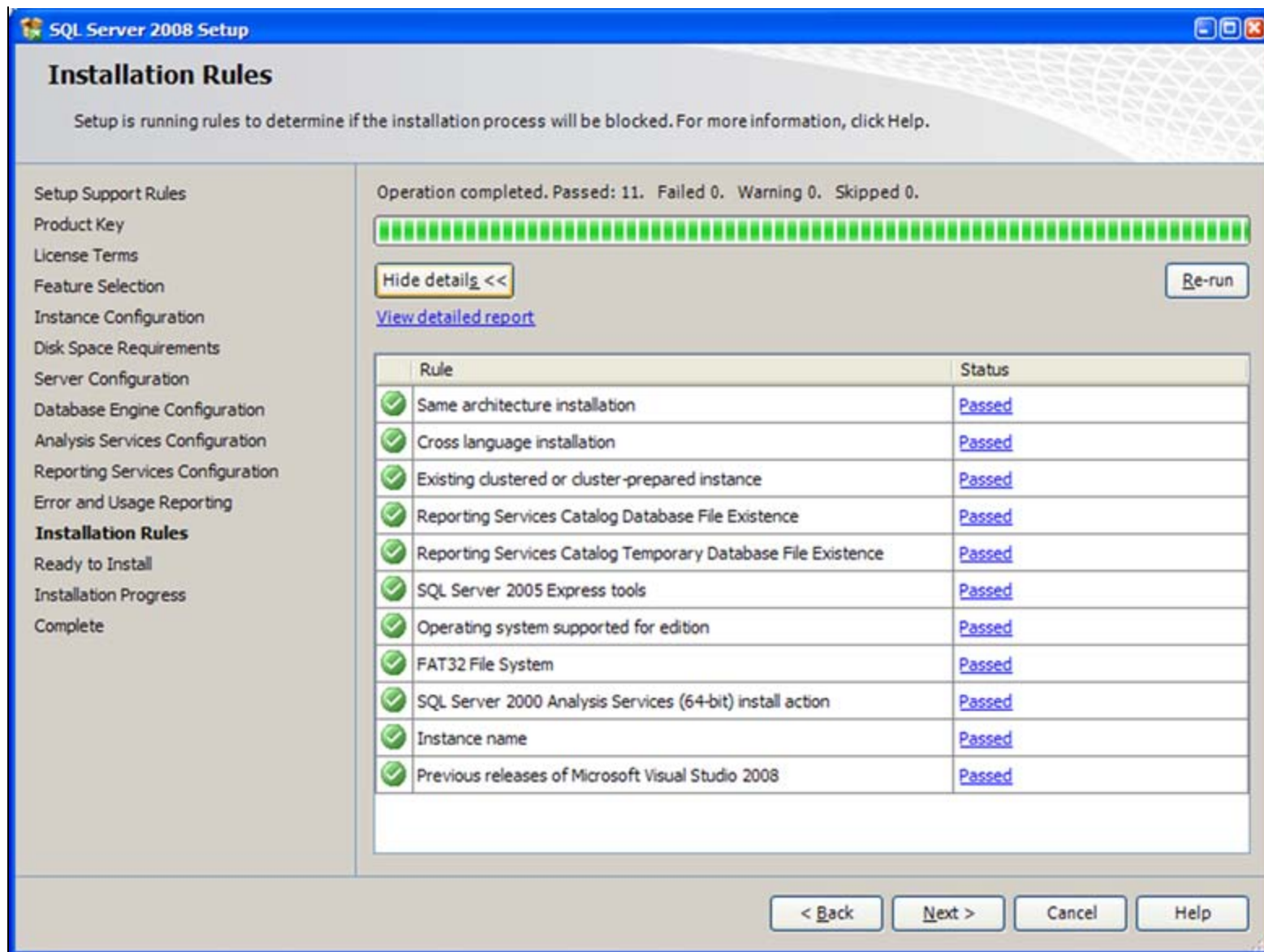


FIGURE 18: INSTALLATION RULES

**FIGURE 19: INSTALLATION RULES PASSED**

On the **Ready to Install** screen, click **Install**.

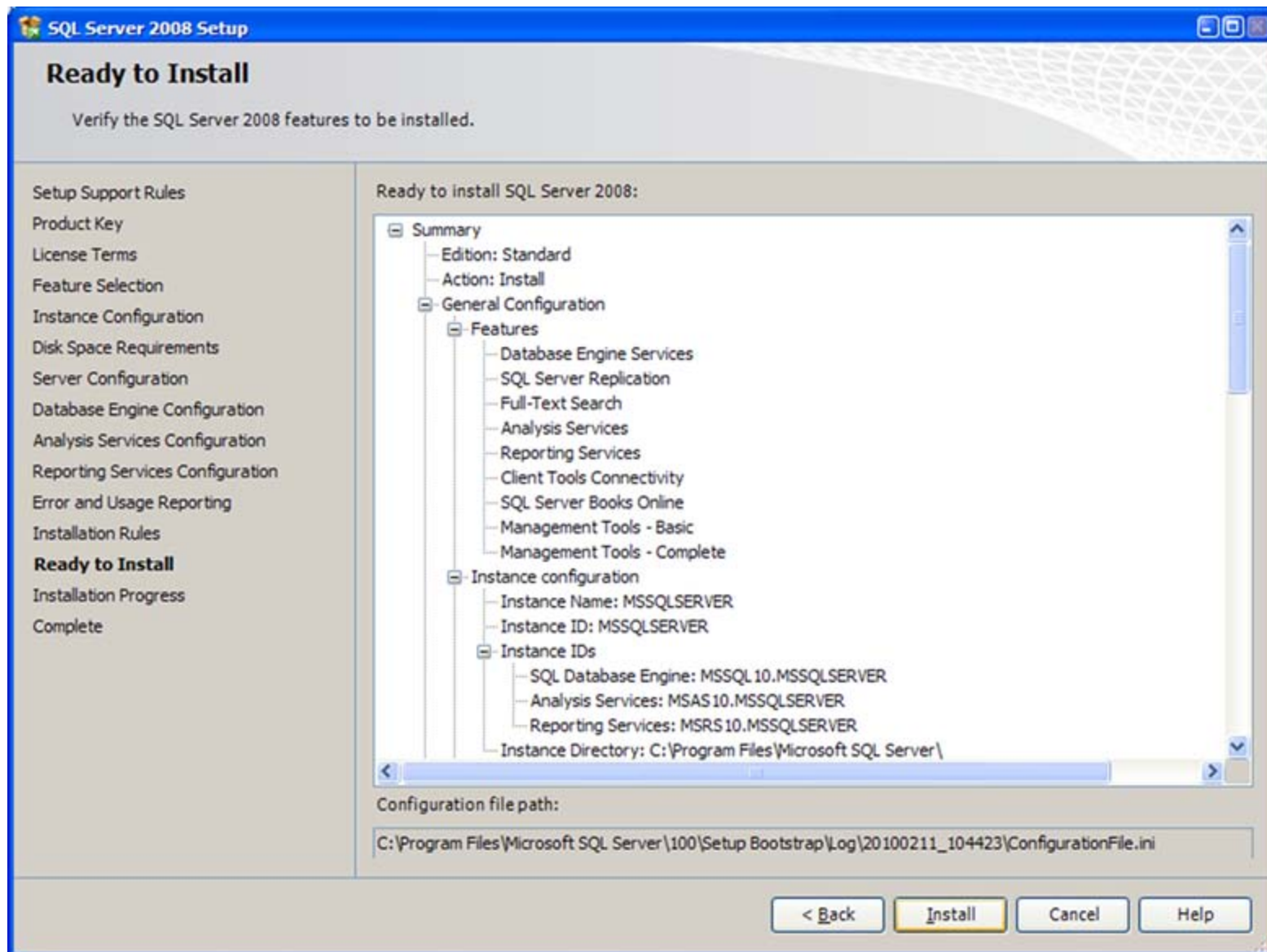


FIGURE 20: READY TO INSTALL

27. When the setup process completes, all of the feature installations in the Installation Progress screen should be successful (Figure 20 below).

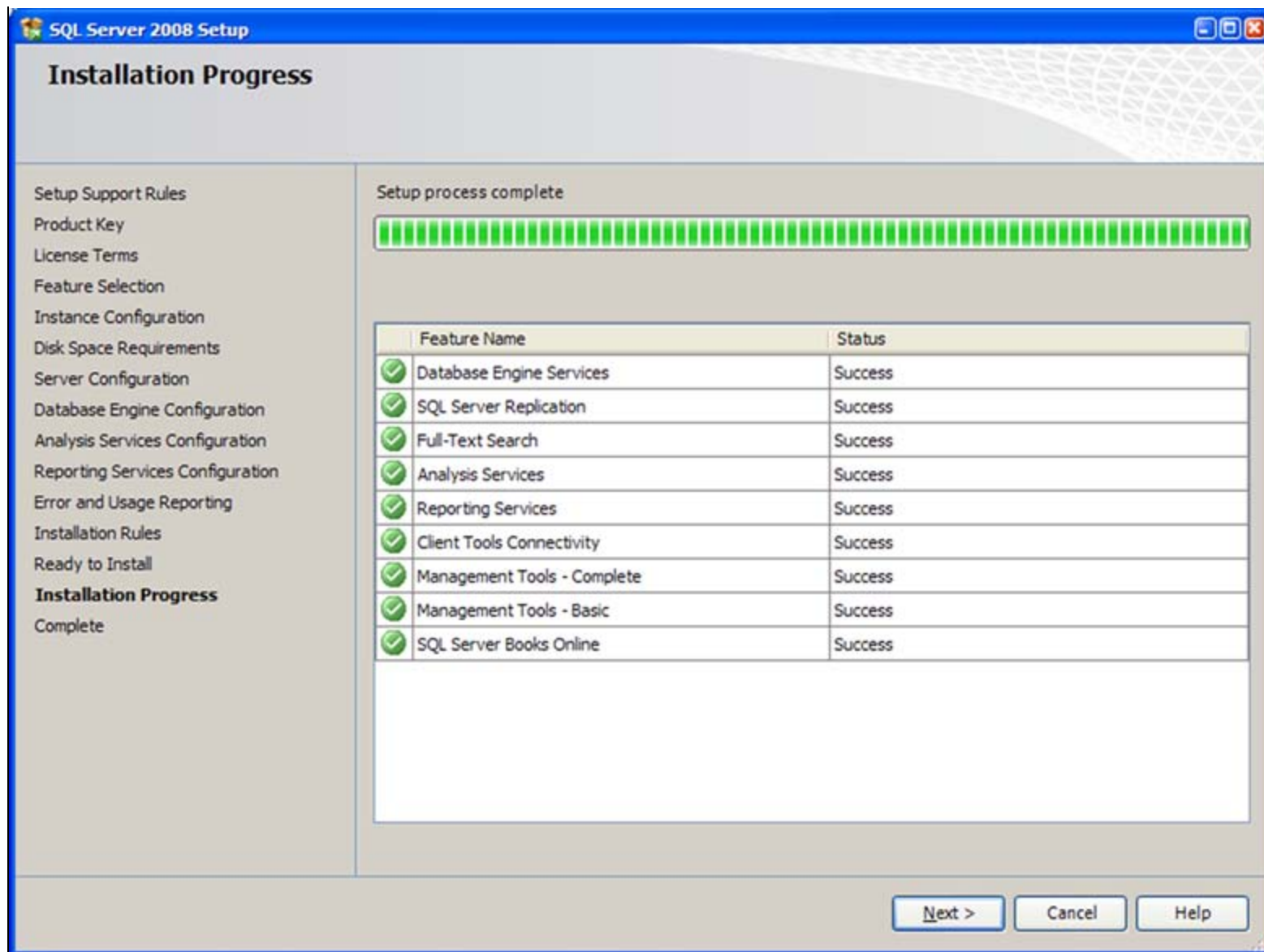


FIGURE 21: INSTALLATION PROGRESS SUCCESS

28. Click **Next** to finish the installation. When the installation completes, you should see the **Complete** screen (Figure 22 below).

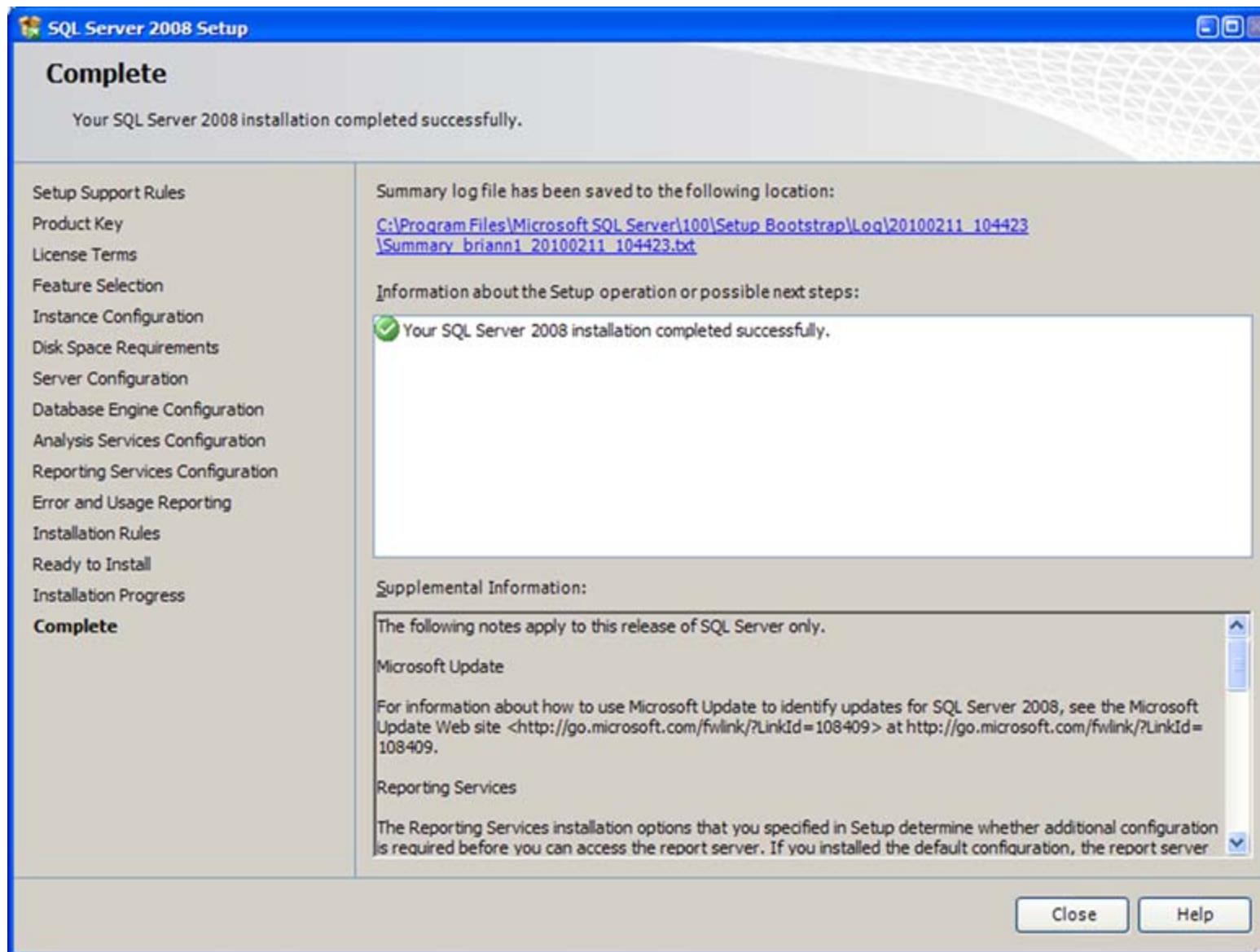


FIGURE 22: INSTALLATION COMPLETE

29. Install SQL Server 2008 **SP1** from file **SQLServer2008SP1-KB968369-x86-ENU.exe** from the the SQL Server 2008 Service Pack 1 DVD.

B. Nguyen

Tech Notes are published occasionally by Wonderware Technical Support. Publisher: Invensys Systems, Inc., 26561 Rancho Parkway South, Lake Forest, CA 92630. There is also technical information on our software products at [Wonderware Technical Support](#).

For technical support questions, send an e-mail to support@wonderware.com.

 [Back to top](#)

©2010 Invensys Systems, Inc. All rights reserved. No part of the material protected by this copyright may be reproduced or utilized in any form or by any means, electronic or mechanical, including photocopying, recording, broadcasting, or by any information storage and retrieval system, without permission in writing from Invensys Systems, Inc.

[Terms of Use.](#)