

## [Tech Note 721](#)

# Solving the Wonderware Historian Auto-Start Issue

---

All Tech Notes, Tech Alerts and KBCD documents and software are provided "as is" without warranty of any kind. See the [Terms of Use](#) for more information.

Topic#: 002496

Created: August 2010

## Introduction/Issue

If the Wonderware Historian is configured to start automatically (Historian's parameter AutoStart is set to **1**, and the computer is restarted, you can receive the following fatal error message in the ArcestraA logger:

**FATAL: Real-time storage did not start within the expected time period [VMDATA\RDHDB; aahCfgSvc.cpp; 7802]**

## Application Versions

- Historian 10 and later
- Microsoft SQL Server 2008

## Cause

The issue is caused by the start-up timing between the Historian and the SQL Server after the computer is restarted.

When the computer is back on line, the Historian might start up first and will try to connect to the SQL Server while SQL Server is still trying to start up. Therefore, the SQL Server is not available for the Historian, and this will in turn cause the issue.

## Resolutions

You can resolve the auto-start issue using either of the following workarounds.

### Workaround 1

The first workaround to this problem is to make the Historian Configuration service dependent on the SQL Server process.

Here are the steps for the first workaround:

1. Start up the Registry editor and locate **HKey\_Local\_Machine\System\CurrentControlSet\Services\InSQLConfiguration**.
2. Double-click the string value **DependOnService** on the right side of the window.
3. Add the new value string **MSSQLSERVER** in the **Edit Multi-String** dialog box as shown in Figure 1 (below).

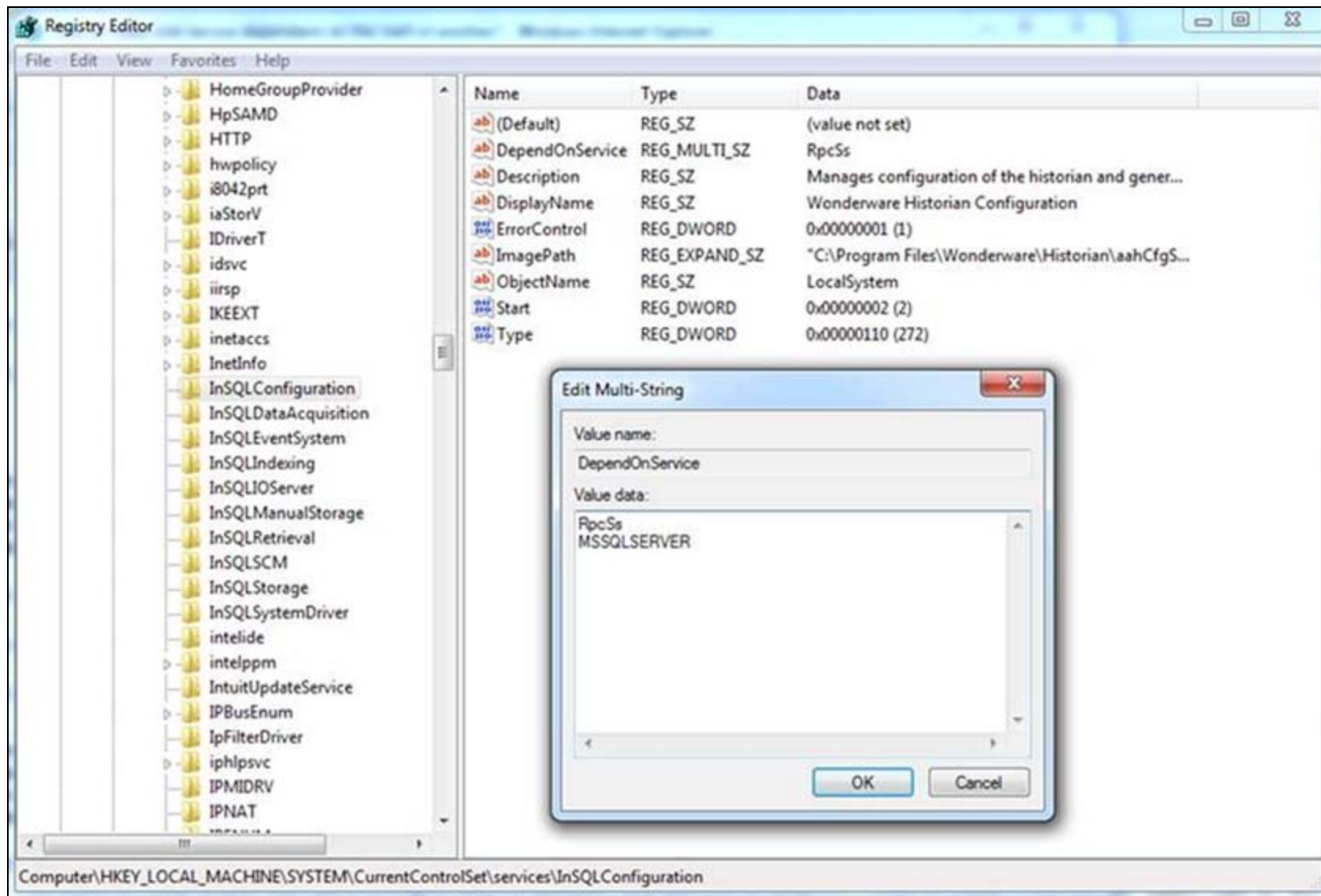


FIGURE 1: ADDING MSSQLSERVER STRING TO DEPENDONSERVICE

4. Save your changes and exit the Registry Editor.

## Workaround 2

The second work-around is to avoid installing the SQL Server SQL **Full-Text Search** component.

1. If you've already installed it, but don't need it, use the Windows Services console, change the **SQL Full-text Filter Daemon Launcher (MSSQLSERVER)** service startup type from **Manual** to **Disabled**.

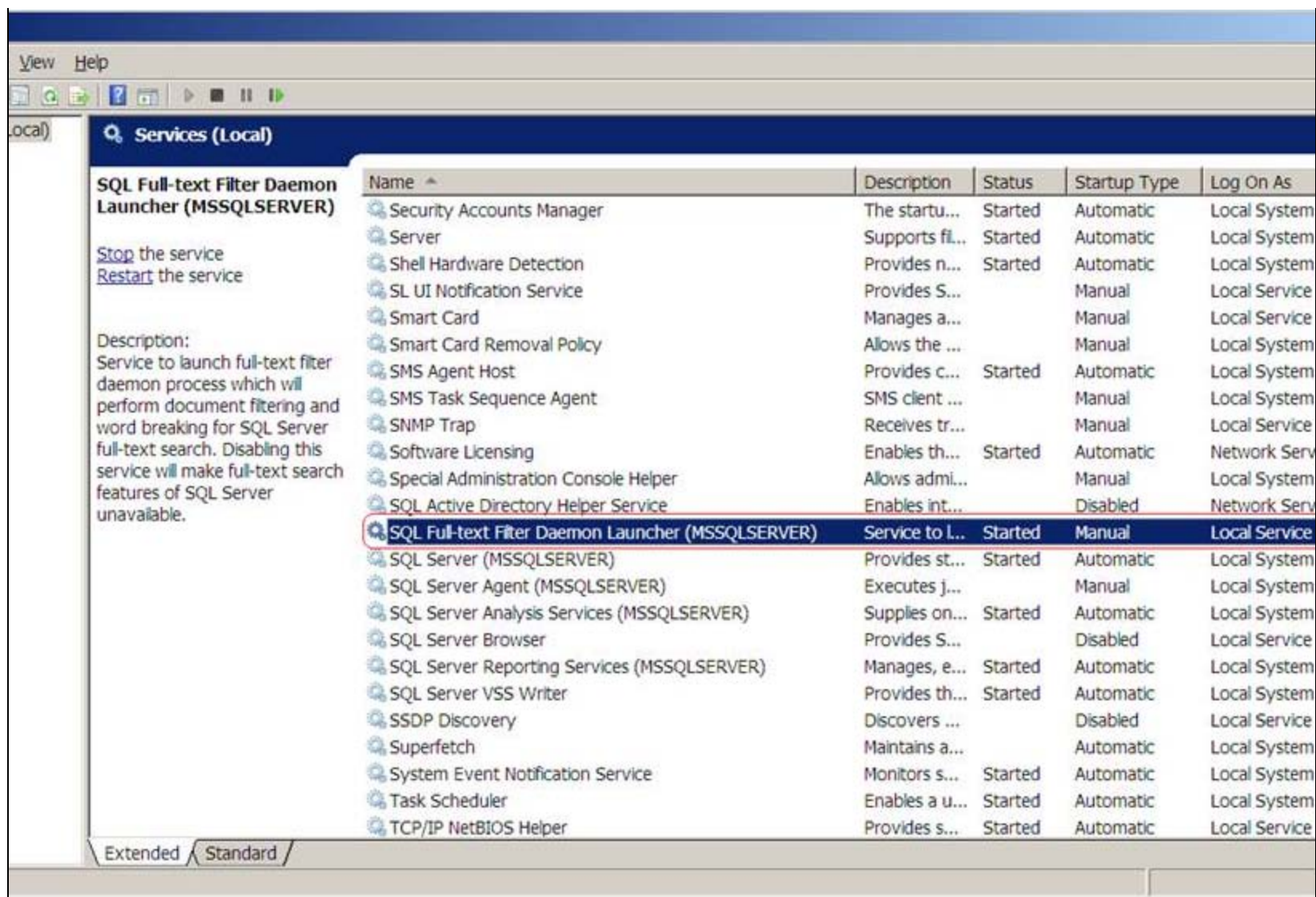


FIGURE 2: DEFAULT SQL FULL-TEXT FILTER SERVICE SETTING

- If you need the **SQL Full Text Search**, use the **Services** console to change the configuration for the **Historian Configuration** service to wait for Full Text Search service to start. Run the following DOS command line (as an Administrator) using:

```
sc config InSQLConfiguration depend= +MSSQLFDLauncher
```

B. Nguyen

*Tech Notes* are published occasionally by Wonderware Technical Support. Publisher: Invensys Systems, Inc., 26561 Rancho Parkway South, Lake Forest, CA 92630. There is also technical information on our software products at [Wonderware Technical Support](#).

For technical support questions, send an e-mail to [support@wonderware.com](mailto:support@wonderware.com).

 [Back to top](#)

©2010 Invensys Systems, Inc. All rights reserved. No part of the material protected by this copyright may be reproduced or utilized in any form or by any means, electronic or mechanical, including photocopying, recording, broadcasting, or by any information storage and retrieval system, without permission in writing from Invensys Systems, Inc.

[Terms of Use](#).