

## [Tech Note 729](#)

# Dismantling the Operator Interface Computer (OIC)

---

All Tech Notes, Tech Alerts and KBCD documents and software are provided "as is" without warranty of any kind. See the [Terms of Use](#) for more information.

Topic#: 002504

Created: October 2010

## Introduction

This *Tech Note* describes how to access the hard-drive and check the cable to the OIC display.

## Application Versions

- Series **A** OIC Panel: Part Number OICB-15S-2EMXU and prior ( **C** and **D** )

## Procedure

The following graphic shows the locations of all screws you must remove in order to access the hard drive (**Figures 1a-e** below).

1. Remove the screws designated by the red highlights in the following figures.



**FIGURE 1A: BOTTOM VIEW OF THE OIC**



FIGURE 1B: RIGHT-SIDE VIEW OF THE OIC



FIGURE 1C: FRONT VIEW OF THE OIC

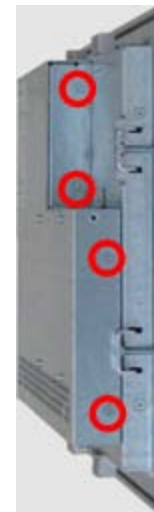


FIGURE 1D: LEFT-SIDE VIEW OF THE OIC



FIGURE 1E: TOP VIEW OF THE OIC

Depending on the size of your device, the top mounting brackets may need to be removed (**Figure 1E: Top View** graphic).

2. Once you remove all the screws, slide the back plate up approximately one inch, then remove it (Figure 2 below).

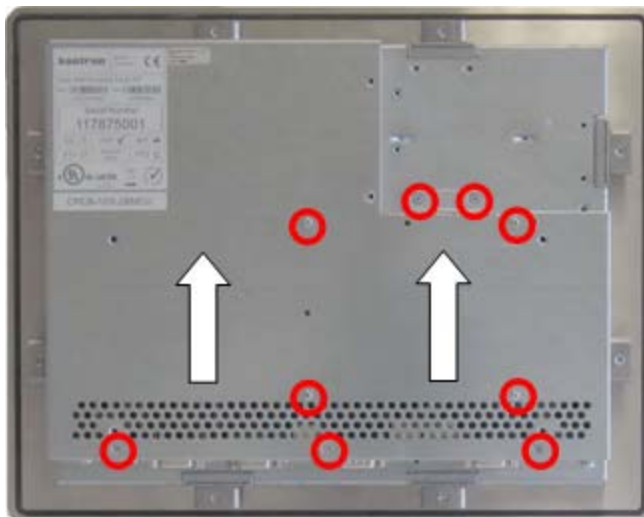


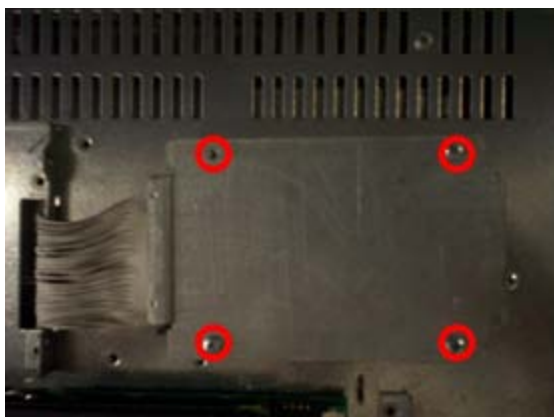
FIGURE 2: REAR VIEW OF HTE WW-OIC PANEL SYSTEM

3. Remove the two plate screws, slide the plate HDD out and flip it upside down (Figure 3 below).



**FIGURE 3: REMOVE THE MOUNTING PLATE SCREWS**

4. Remove the four screws holding the HDD to the Mounting Plate (Figure 4 below).



**FIGURE 4: REMOVE FOUR MOUNTING PLATE SCREWS**

5. Gently pull the ribbon cable with even pressure, being careful not to bend the pins (Figure 5 below).



**FIGURE 5: PULL HARD DRIVE RIBBON CABLE WITHOUT BENDING THE PINS**

## Check the Transparent Cable Connection to the Display

- Verify the transparent cable is connected and not pinched (Figures 6-7 below).



FIGURE 6: CABLE



**FIGURE 7: CABLE**

N. Khadikar

*Tech Notes* are published occasionally by Wonderware Technical Support. Publisher: Invensys Systems, Inc., 26561 Rancho Parkway South, Lake Forest, CA 92630. There is also technical information on our software products at [Wonderware Technical Support](#).

For technical support questions, send an e-mail to [support@wonderware.com](mailto:support@wonderware.com).

 [Back to top](#)

©2011 Invensys Systems, Inc. All rights reserved. No part of the material protected by this copyright may be reproduced or utilized in any form or by any means, electronic or mechanical, including photocopying, recording, broadcasting, or by any information storage and retrieval system, without permission in writing from Invensys Systems, Inc.

[Terms of Use.](#)