

[Tech Note 746](#)

Using the New MES 4.0 Archive, Purge and Restore Functions

All Tech Notes, Tech Alerts and KBCD documents and software are provided "as is" without warranty of any kind. See the [Terms of Use](#) for more information.

Topic#: 002524
Created: January 2011
Updated February 2013

Introduction

This *Tech Note* explains setting up and using the new Archive, Purge and restore feature introduced in MES 4.0

In the example we are using a 2008 Server machine, with SQL Server 2008 and the MES 4.0 software. The database being restored is called **MESDB**, however your database name will differ.

Note: Be sure you *do not* restore to your production database or serious performance issues will result.

Application Version

- MES 4.0

Configuration Prerequisites

Before using these features, you must configure the Archive parameters.

To configure the Archive parameters

1. Open the MES Client and select the **General Parameters** tab.
2. Select the **Archive** button.

The Archive section has three parameters. We are going to use the default settings for the **Archive query window size (hours)** and the **Archive root directory path**. You can change them later if necessary.

The **Archive query window size** parameter controls the span of individual recordsets retrieved during the Archive, Purge and Restore operations. Basically, this parameter will change the number of records retrieved at one time from the tables to be archived. This parameter can be varied to influence the speed of the archive/purge/restore operations, with the result of potentially increasing or decreasing the operations' impacts on other database operations within the system.

3. In the **Archive server host** Value field, type the server name where the **Archive** database is located. In this example we are using the server **TSVM2008**.

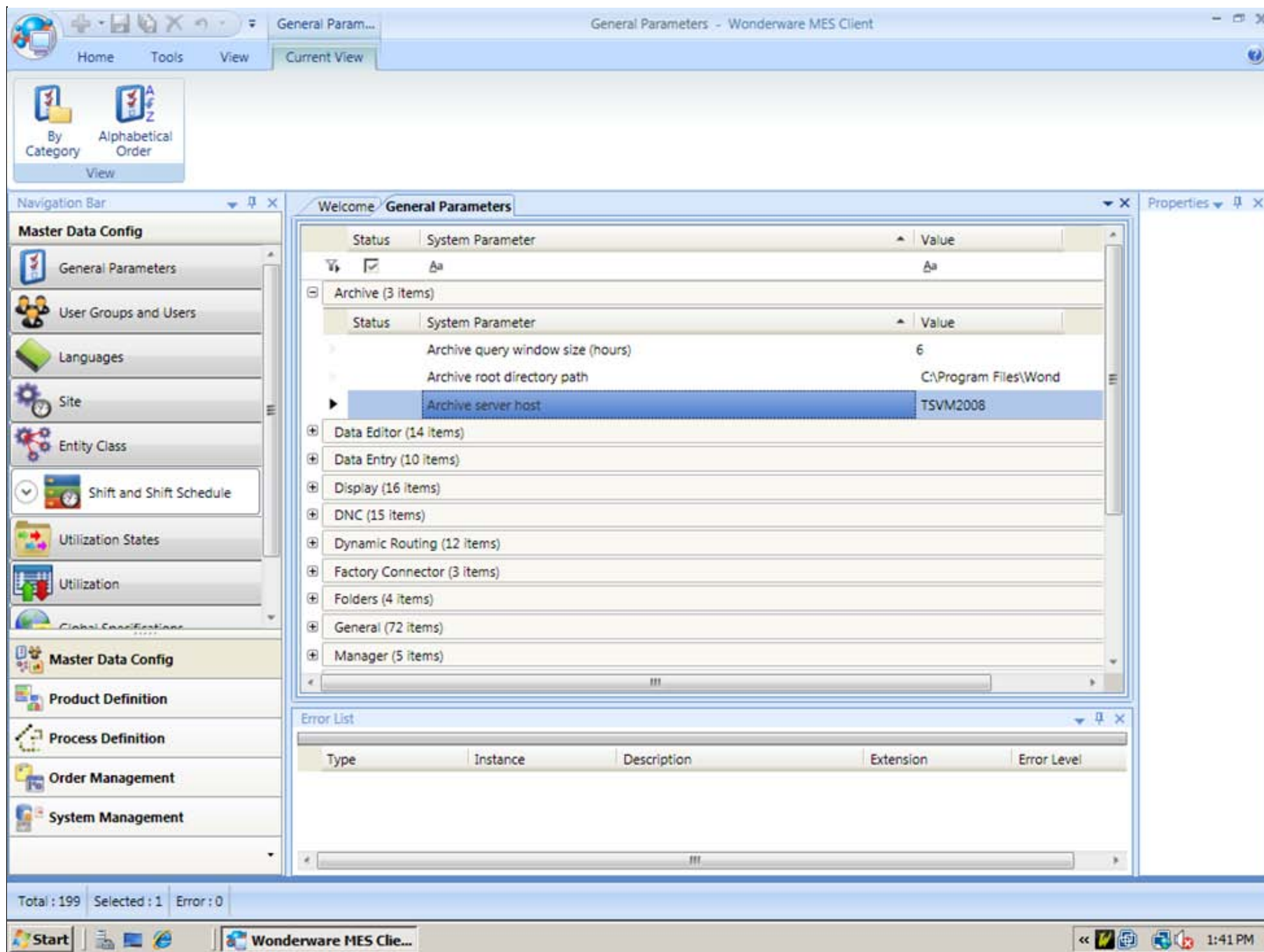


FIGURE 1: ARCHIVE SERVER HOST PARAMETER

To Distribute the Archive, Purge and Restore Functions

If you would like host the **Archive**, **Purge** and **Restore** functions on another server, configure the following in the MES client.

- The Archive root directory path will point to the other machine where you want to archive files to be stored and rested on.
- On the machine TSVM2201 we have to create the folder Archive and share the folder.
- The Archive Server Host name points to the middleware server you want to run the operations. In this case we want it to run on another server than the production server.
- We installed a full Middleware application on **TSVM2201**. Provide this value in the **Archive Server Host** name field since we want to offload APR to this Middleware.

The screenshot shows the 'General Parameters' configuration window in the Wonderware MES Client. The 'Archive' section is expanded, displaying a table of system parameters. The 'Archive root directory path' parameter is highlighted, showing its value as '\\TSVM2201\Archive'. The 'Archive server host' parameter is also visible, with a value of 'TSVM2201'.

Status	System Parameter	Value
<input checked="" type="checkbox"/>	Aa	Aa
Archive (3 items)		
Status	System Parameter	Value
<input type="checkbox"/>	Archive query window size (hours)	6
<input type="checkbox"/>	Archive root directory path	\\TSVM2201\Archive
<input type="checkbox"/>	Archive server host	TSVM2201
Data Editor (14 items)		
Data Entry (10 items)		
Display (16 items)		
DNC (15 items)		
Dynamic Routing (12 items)		
Factory Connector (3 items)		
Folders (4 items)		
General (72 items)		
Manager (5 items)		
Operator (21 items)		
Security (19 items)		
Supervisor (5 items)		

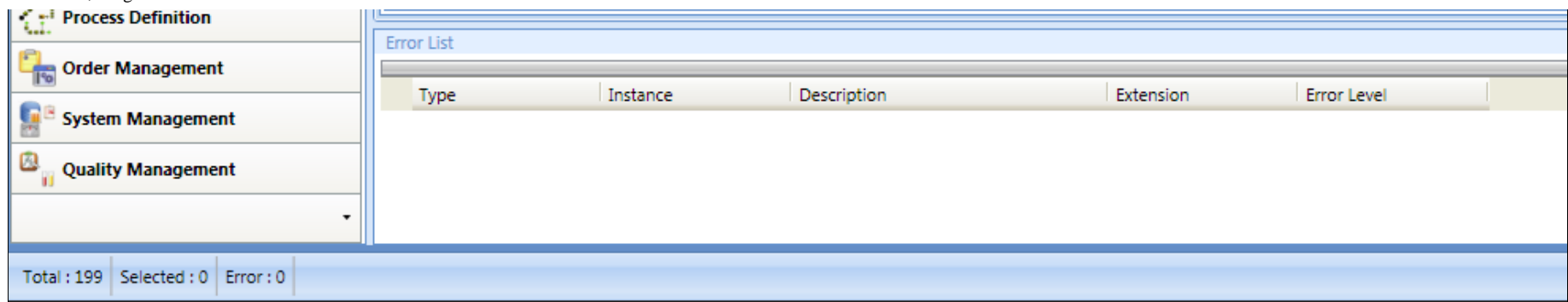


FIGURE 2: MES CLIENT WITH ARCHIVE ROOT DIRECTORY PATH

Set Up the Database Connection

Next we need to setup the Database connection string to point to the correct database for restoring the data to the Restore database MESDB.

You must create a new MES **Restore** database using the MES Database Setup utility. The Restore database can be called anything. This way the SQL Checksum Archive files can be restored in the database.

Important: Restoring data back into the production database is not supported.

1. Open and login to the **Database Connection Editor**.

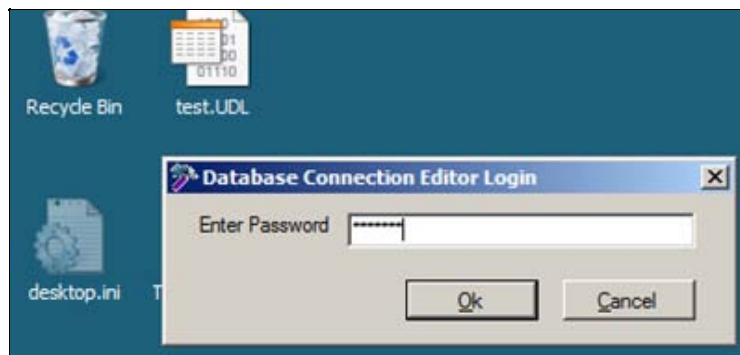


FIGURE 3: LOGIN TO THE DATABASE CONNECTION EDITOR

2. Click the **Restore** tab and set the **Server Name** to the Archive database server and the **Database Name** to the target restore database.
3. Test the connection and save, then restart the Middleware (Figure 4 below).

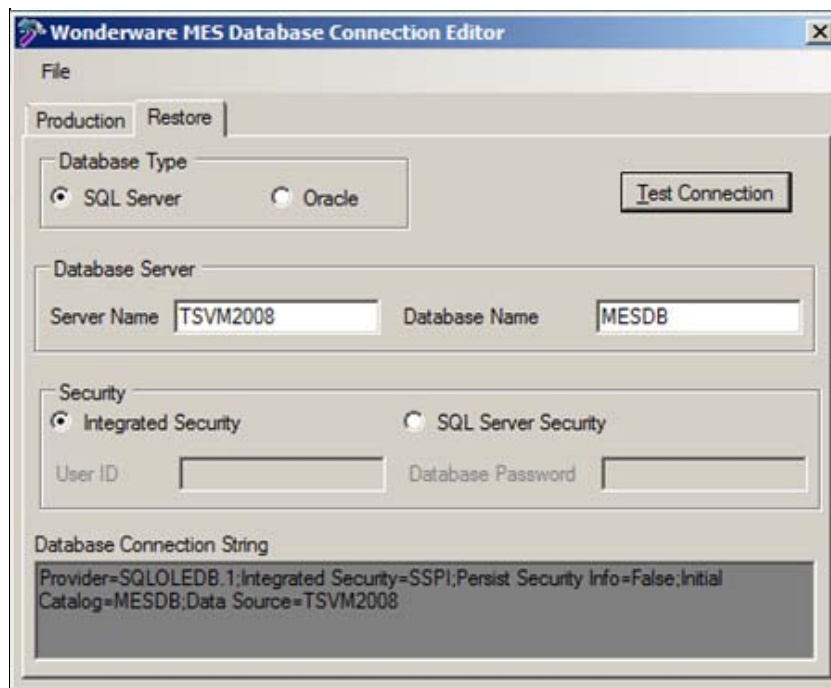


FIGURE 4: DB CONNECTION EDITOR

Create and Run the Jobs

Several Job types are available. This *Tech Note* shows running and managing the **Archive** and **Restore** Jobs as two separate operations.

Running the Archive Job

1. In the MES Client, select **System Management**, then **Database Maintenance** (Figure 5 below).

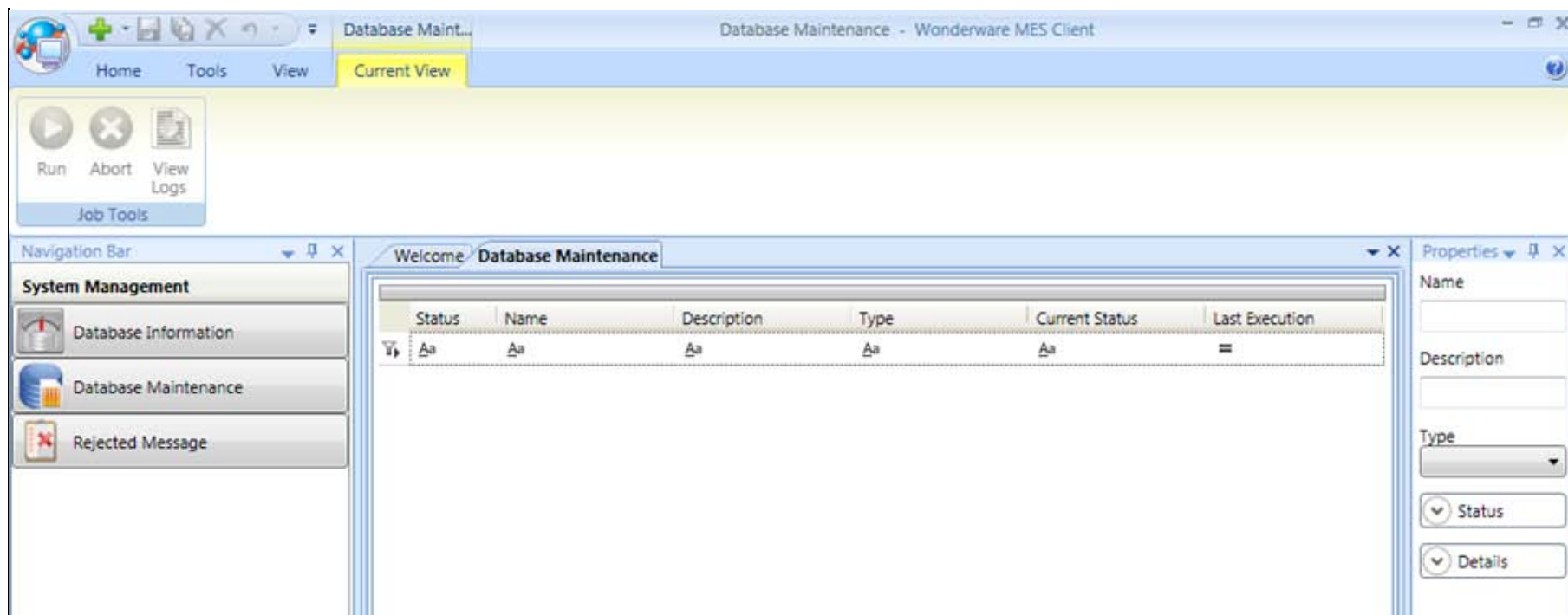


FIGURE 5: SYSTEM MANAGEMENT > DATABASE MAINTENANCE PANEL

Now that you have completed the setup for this feature, run an Archive Job.

2. In the Database Maintenance field, right-click and select **New**. The name for the Archive Job is arbitrary so it can be named anything. In this example we call the job **Database Maintenance**.
3. In the **Type** section select **Archive** from the list.

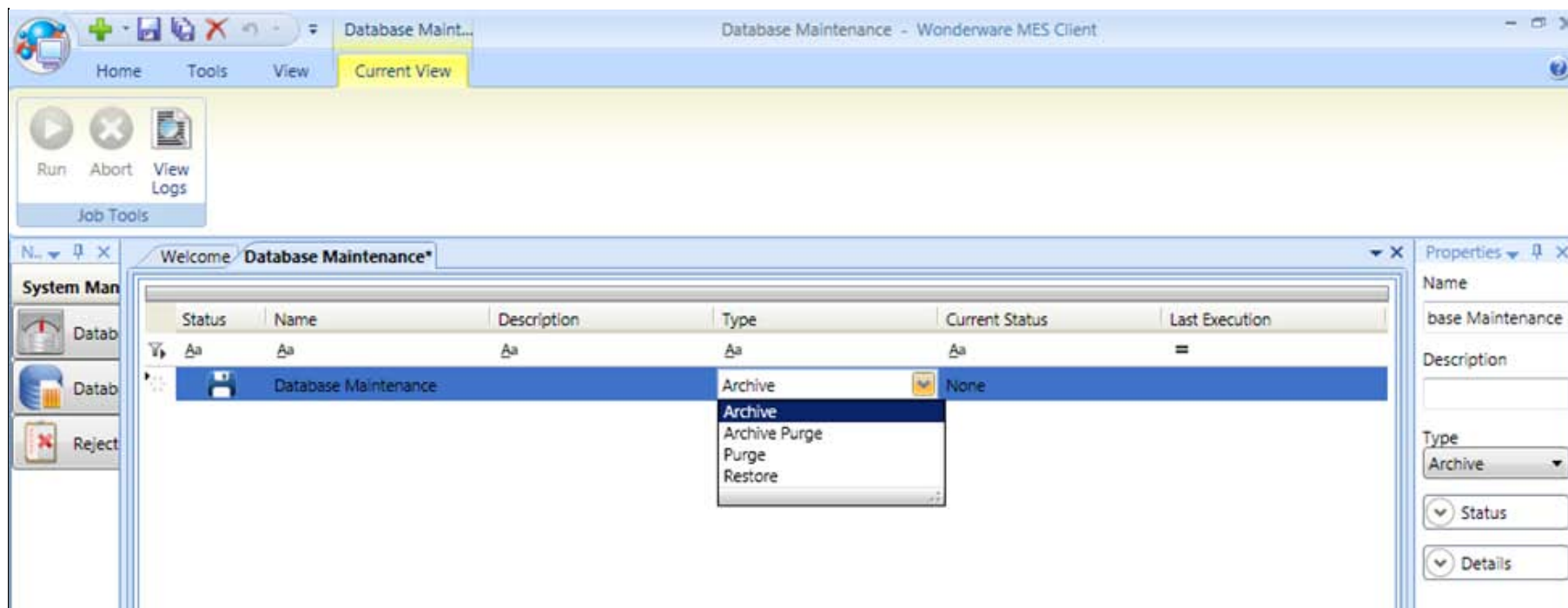


FIGURE 6: ARCHIVE JOB TYPE

4. In the **Properties** section panel at the right, you can view **Status** and **Details**. Refer to the MES 4.0 user guide chapter **Database Maintenance** for more details on what you want to do depending on the site requirements.
5. Highlight the Job and right-click it.
6. Click **Run** to start the Job manually. You will see the Job status is **Running** in the **Current Status** column (Figure 7 below).

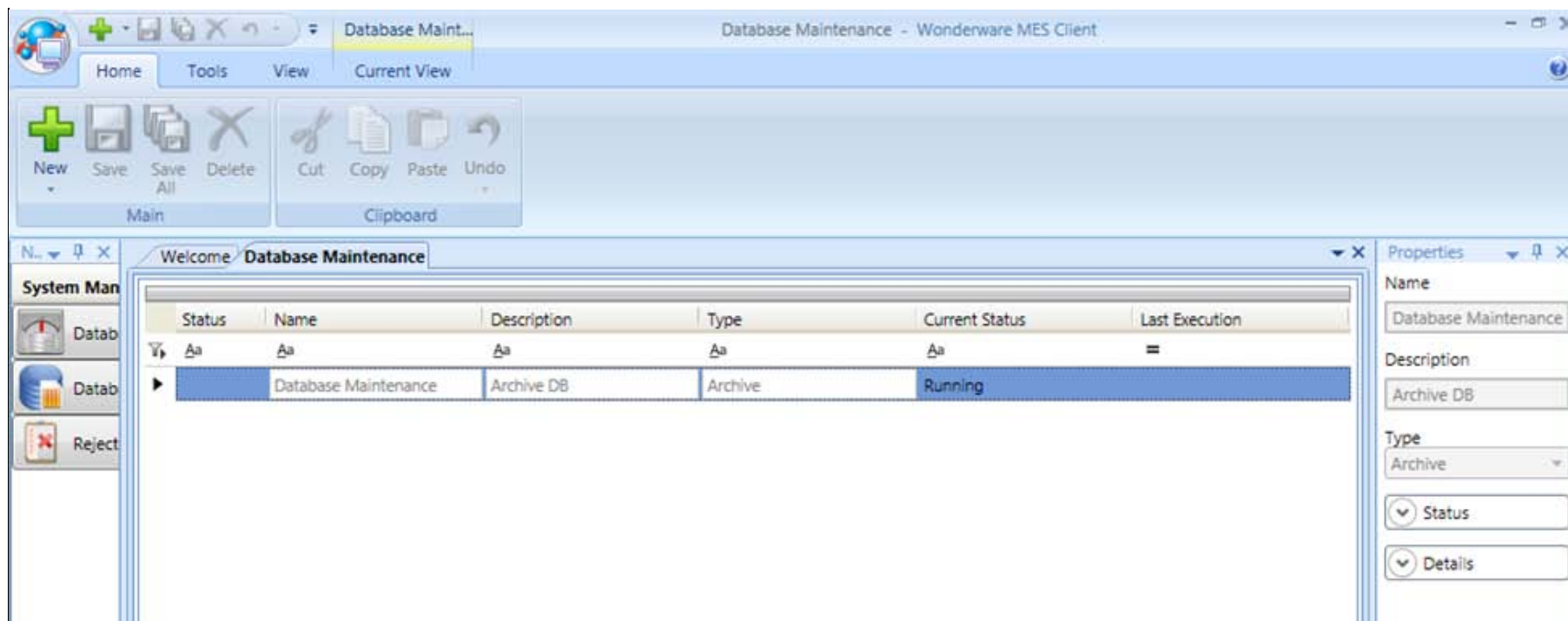


FIGURE 7: MANUALLY RUNNING THE JOB

- When the Job is complete you see **Completed** in the **Current Status** field.

Running the Job also creates a log file that you can view in order to see Job details. If the Job fails this is the first place to check and see what the cause might have been, and then correct it using the editor.

- Right-click the Job and click **View Logs**.

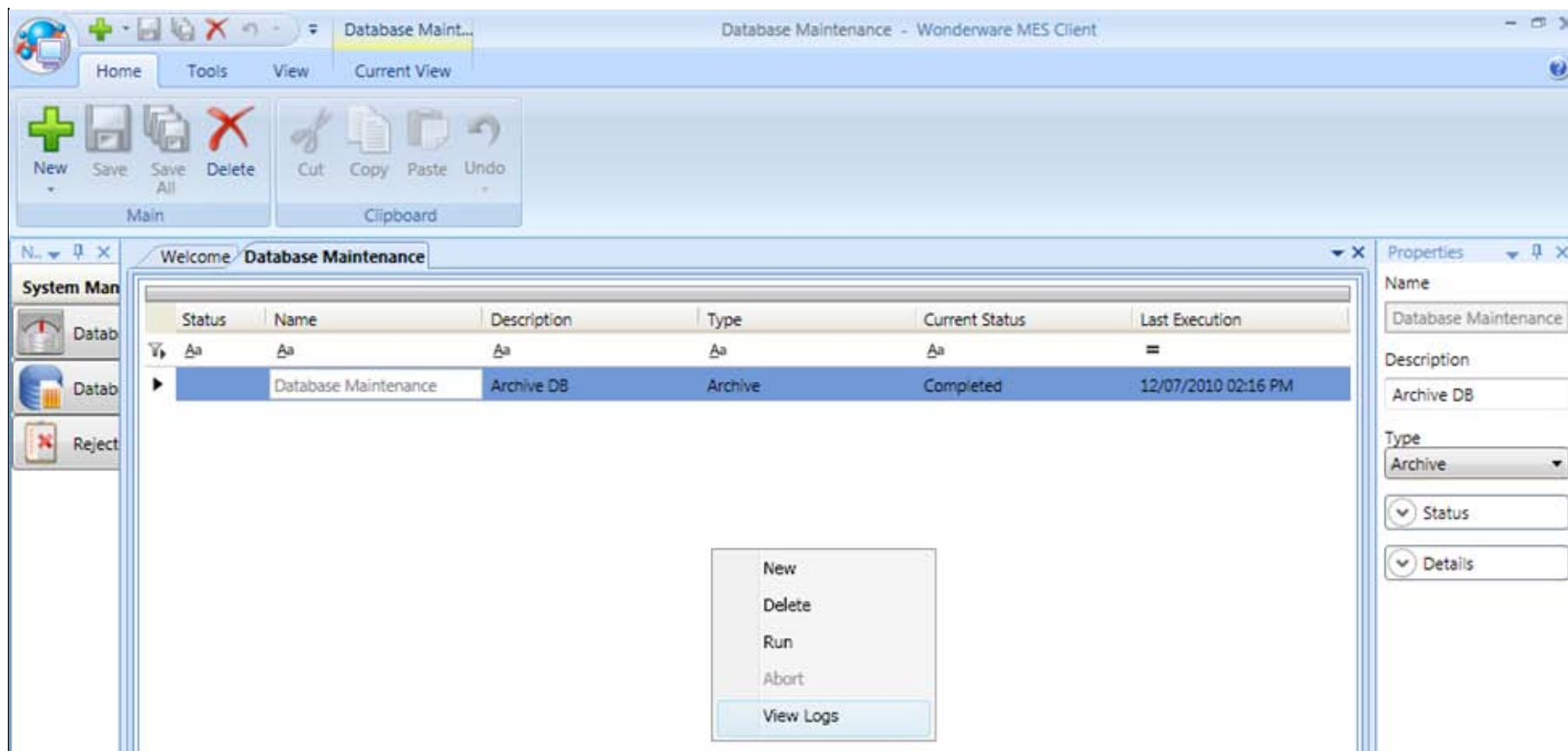


FIGURE 8: VIEW JOB LOGS

Figure 9 (below) shows the log file content. If there are errors this will give you an idea of what might have been the problem.

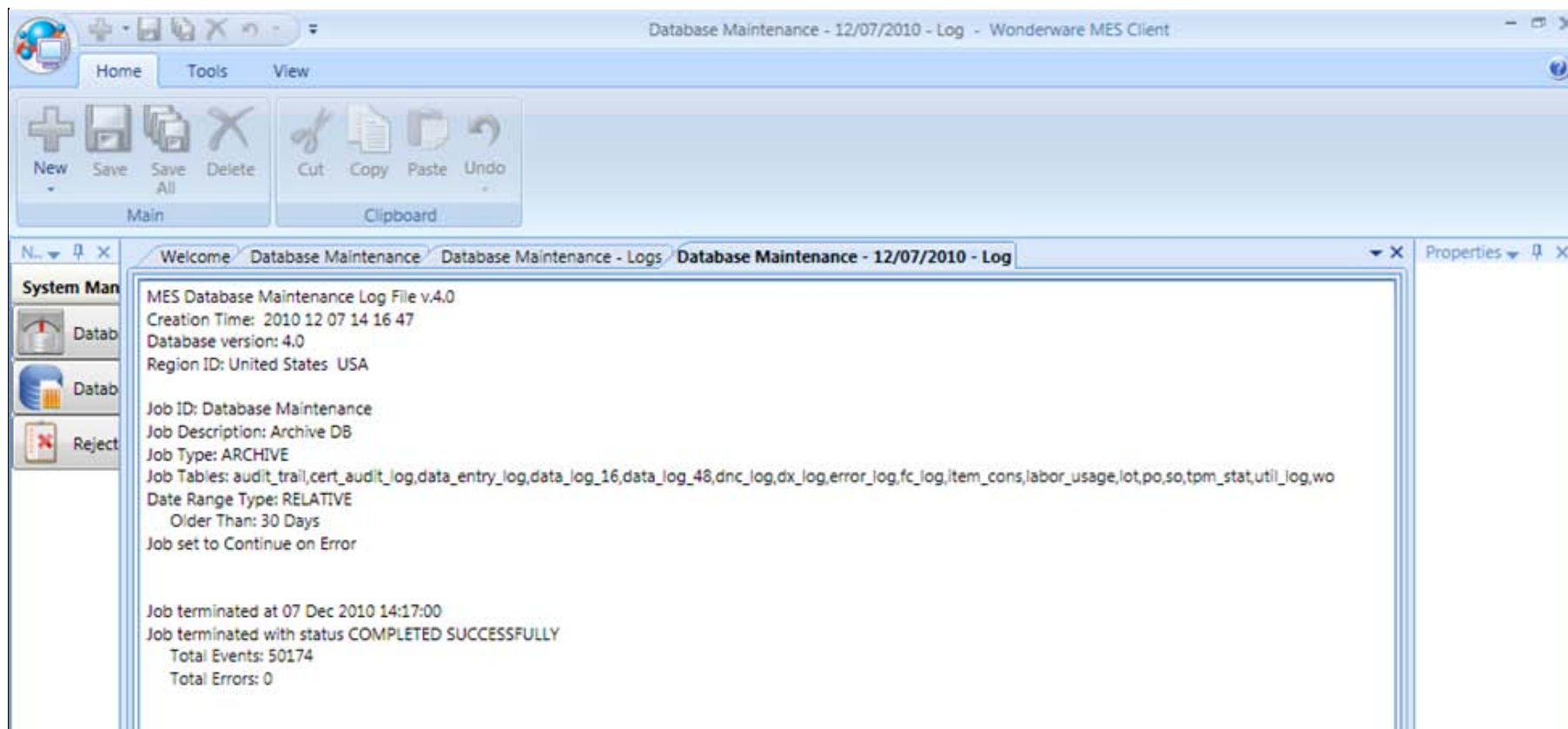


FIGURE 9: LOG FILE CONTENT

9. Below shows the Job was completed in the **Current Status** column. If the Job did not complete due to problems it will show an error in the Current Status.

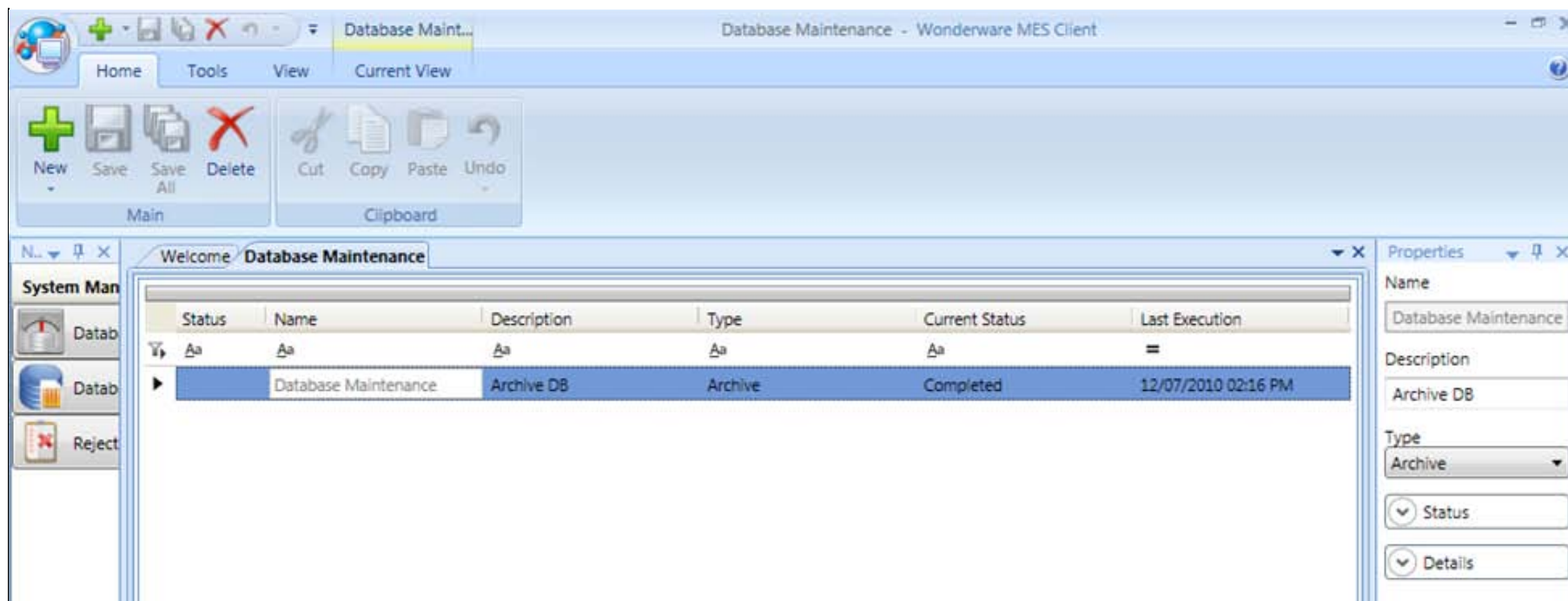


FIGURE 10: JOB COMPLETED SUCCESSFULLY

Running the Restore Job

For Archive, Purge or Archive Purge jobs, follow the same steps but change the job Type to the feature you want to use from the **Type** list shown in [Figure 6 \(above\)](#).

In the next example, we use the **Restore** feature and its options.

1. Create a new Job and select **Restore** from the drop down and save it.

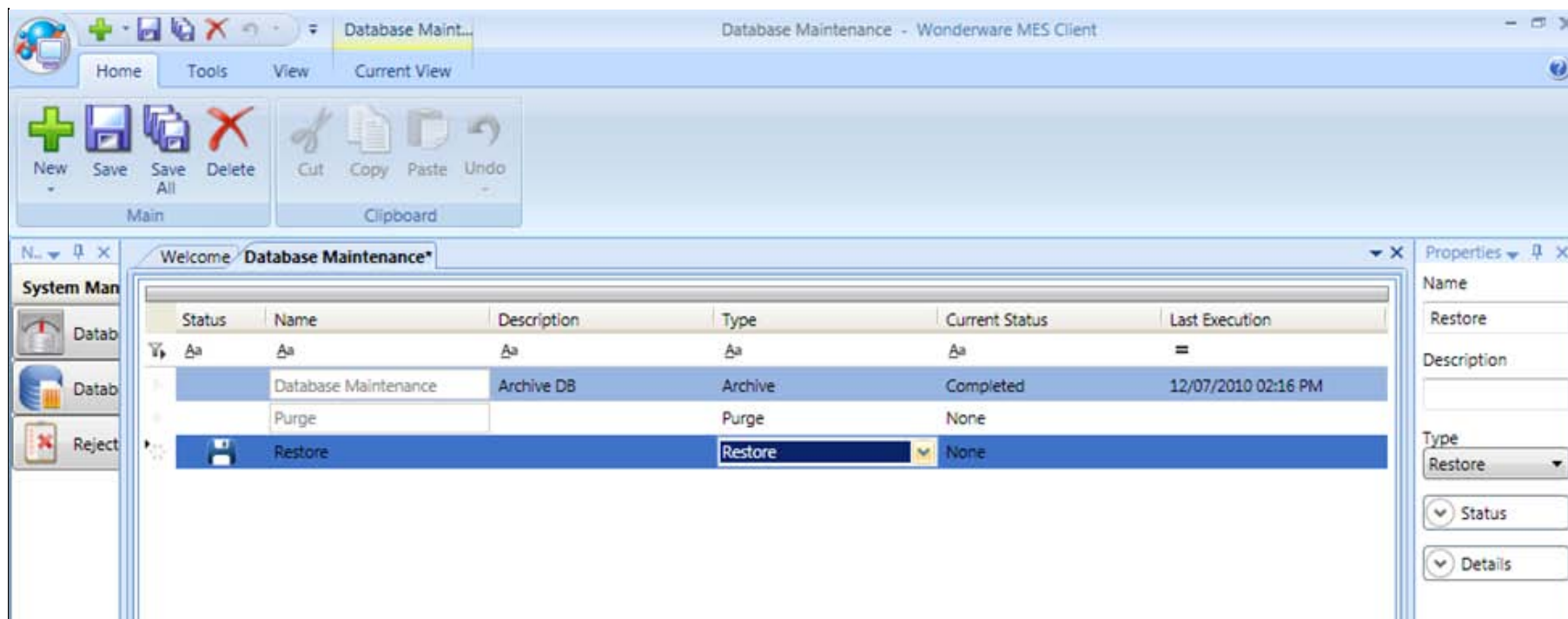


FIGURE 11: CONFIGURING THE RESTORE JOB

- In the Properties panel for the Restore job, expand **Details** and select the data that you want to restore. This is where we used the default location that was defined in the Data Entry section of the tech note.

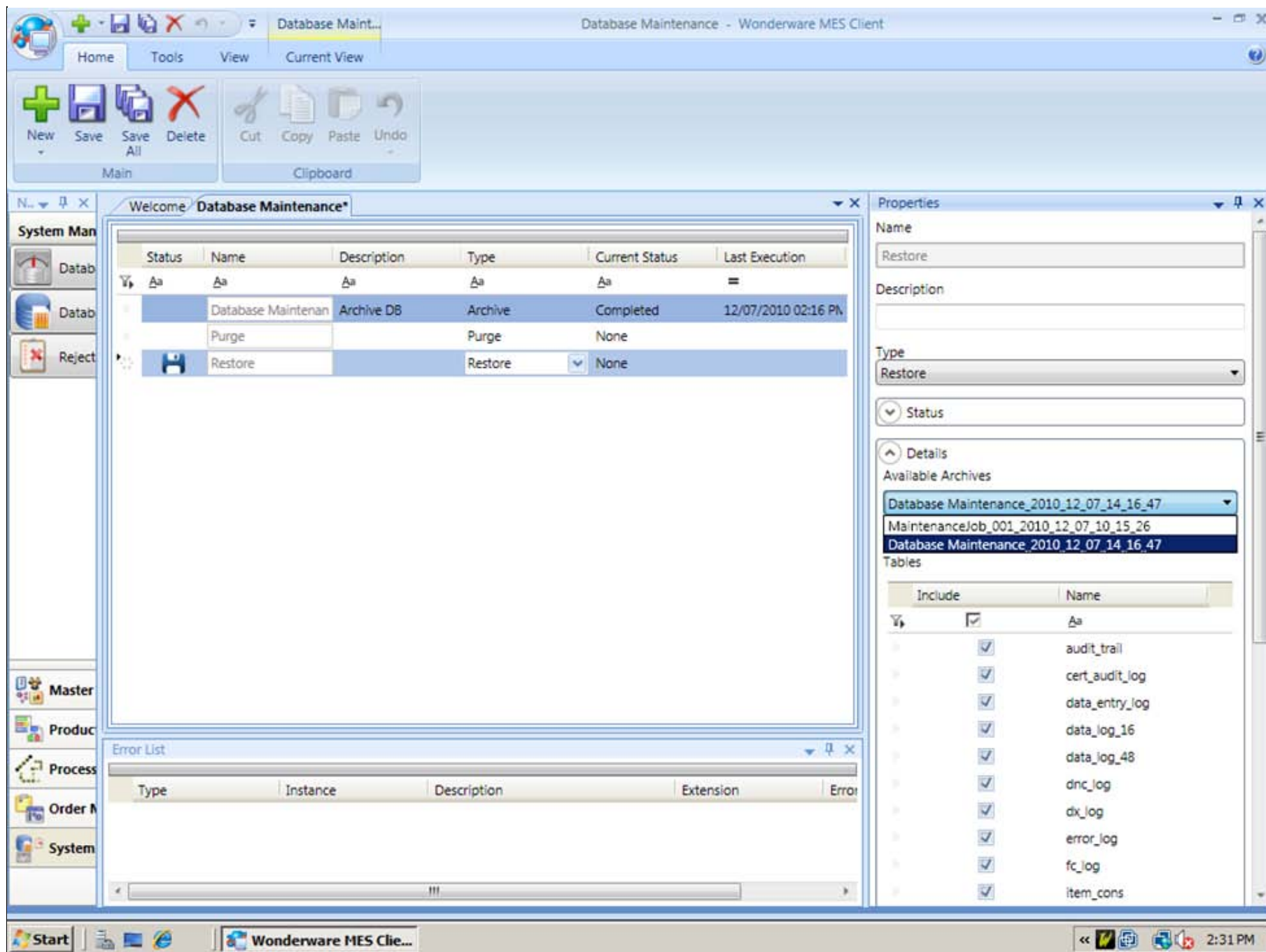


FIGURE 12: DETAILS PANEL FOR RESTORE JOB

3. Select the correct database and save.

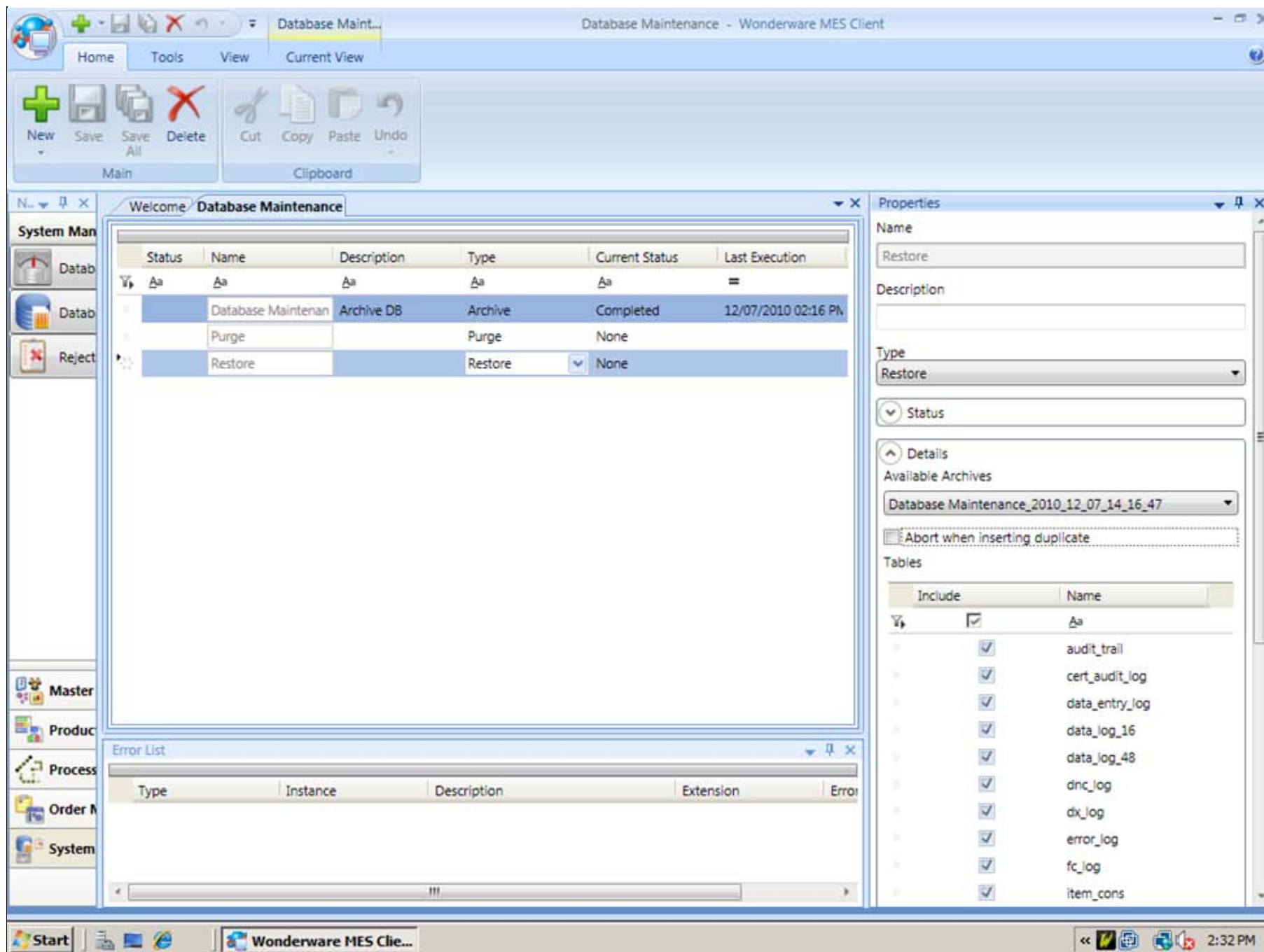


FIGURE 13: SELECT THE CORRECT DB AND SAVE

- Now run the **Restore** Job the same way as the others by right clicking and selecting **Run**.

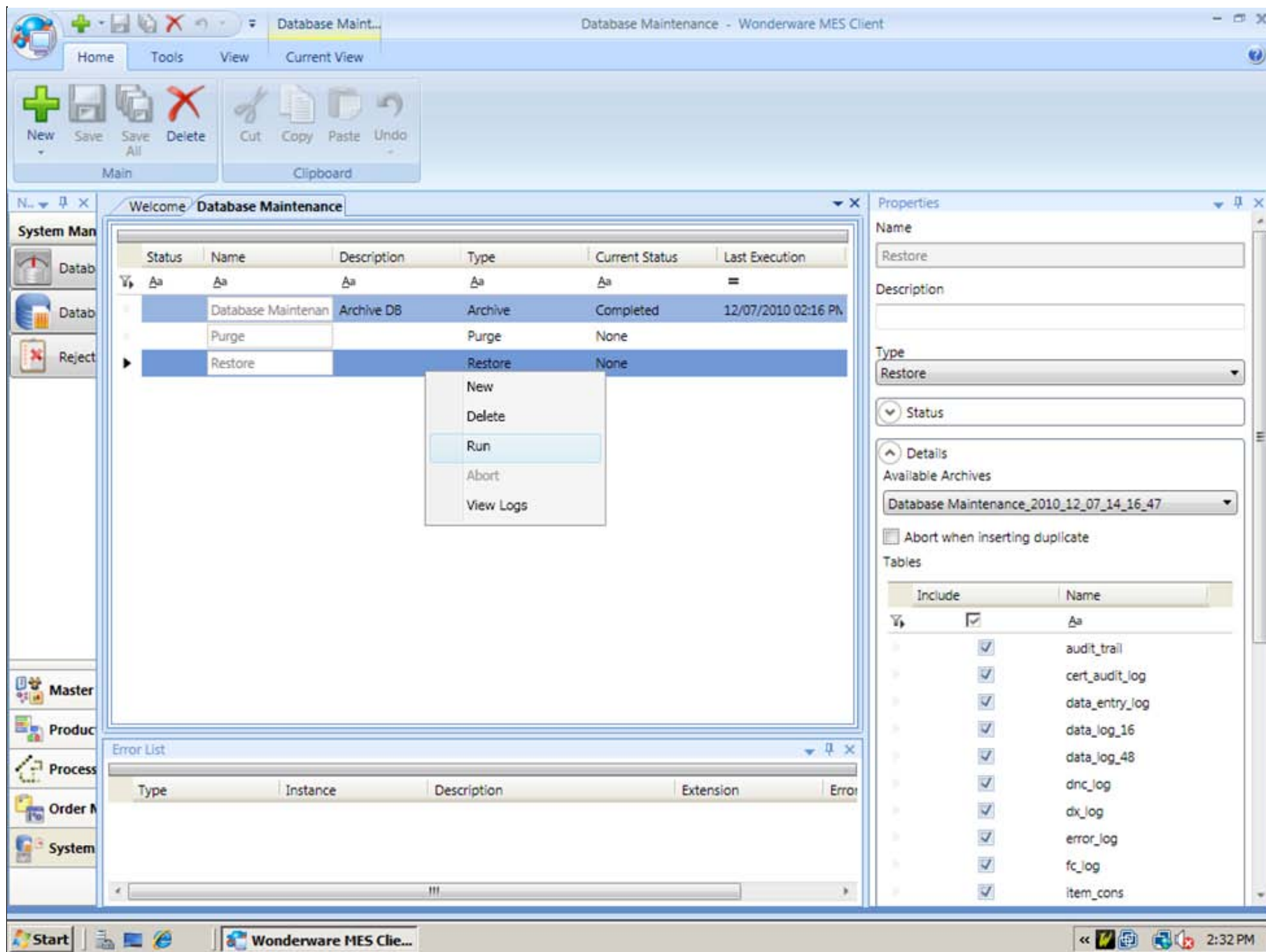


FIGURE 14: RUN JOB MANUALLY

- You will see the Job is running now.

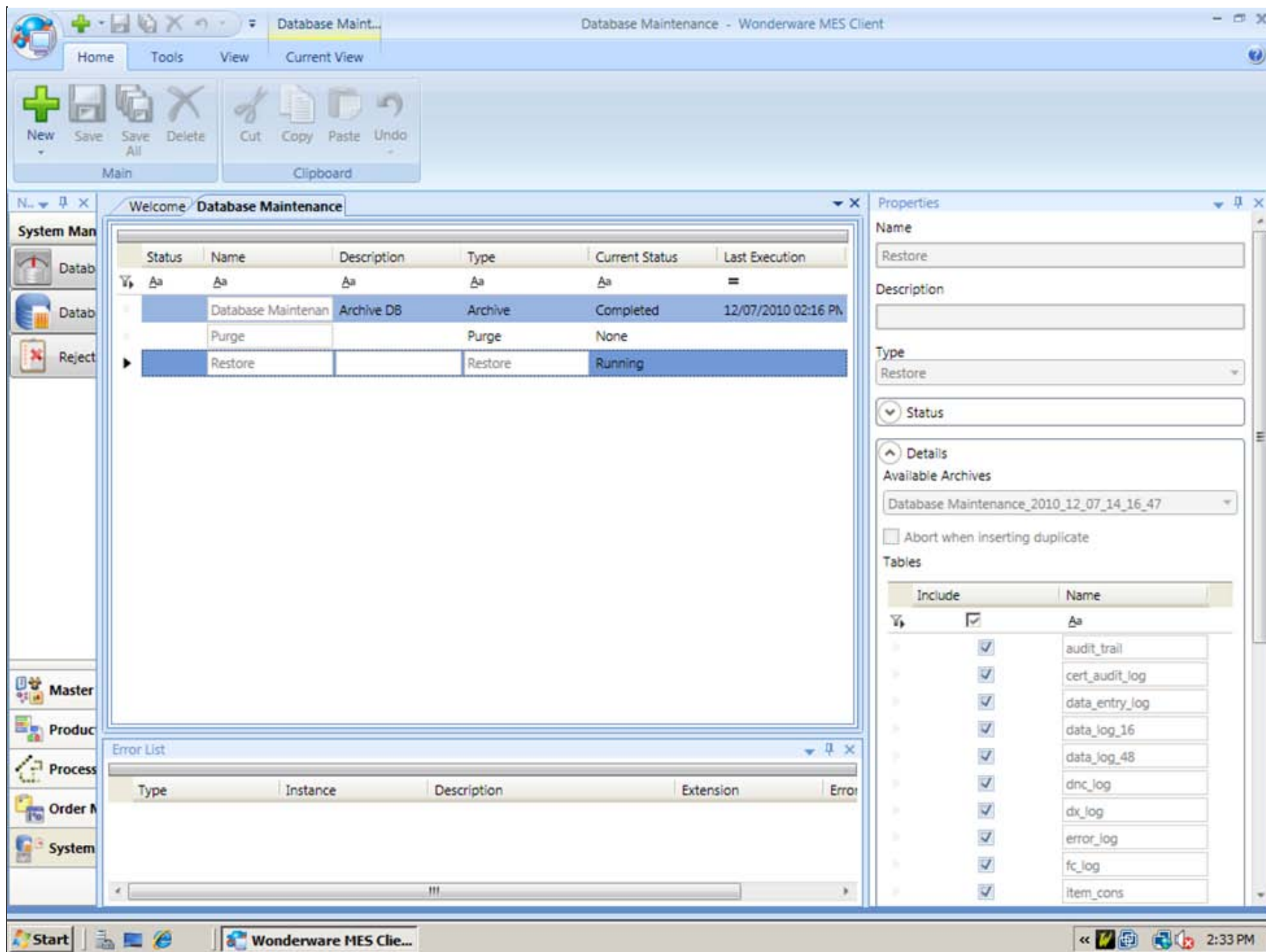


FIGURE 15: JOB STATUS IS RUNNING

The Job is now **Completed** and you can view the log file by right-clicking the job and selecting **View Logs**.

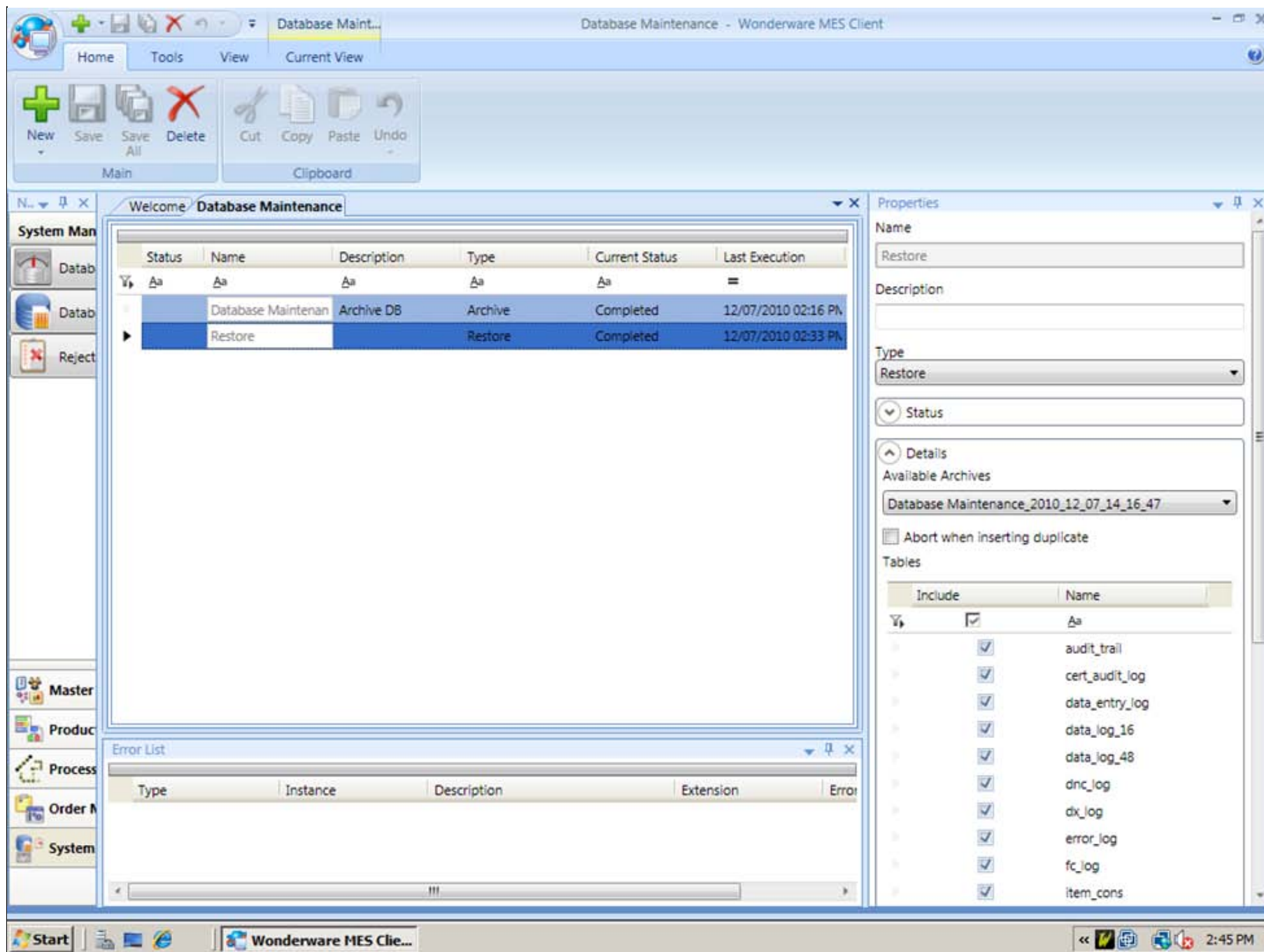


FIGURE 16: RESTORE JOB COMPLETED

J. Godfrey

Tech Notes are published occasionally by Wonderware Technical Support. Publisher: Invensys Systems, Inc., 26561 Rancho Parkway South, Lake Forest, CA 92630. There is also technical information on our software products at [Wonderware Technical Support](#).

For technical support questions, send an e-mail to support@wonderware.com.

 [Back to top](#)

©2013 Invensys Systems, Inc. All rights reserved. No part of the material protected by this copyright may be reproduced or utilized in any form or by any means, electronic or mechanical, including photocopying, recording, broadcasting, or by any information storage and retrieval system, without permission in writing from Invensys Systems, Inc. [Terms of Use](#).