

[Tech Note 753](#)

Resolving MES Entity Model Builder Errors on a Remote IDE Development Node

All Tech Notes, Tech Alerts and KBCD documents and software are provided "as is" without warranty of any kind. See the [Terms of Use](#) for more information.

Topic#: 002531

Created: March 2010

Introduction

On IDE development nodes there can be issue where the MES Entity Model builder does not sync the MES database with the Galaxy database. The likely cause of the issue is that the configuration does not have Utilization Capability Objects (UCO) or Operation Capability Objects (OCO) configured in the Galaxy.

This *Tech Note* explains resolving the sync issue. In this example we are going to use the UCO but the solution is the same for the OCO.

Application Versions

- Wonderware Application Server 3.1 and later
- MES 4.0 and 4.0 SP1

Resolution

To resolve this issue you must open a UCO or OCO template, modify/save, then close it in the IDE editor.

1. On the Remote IDE development node that has the MES Entity Modle builder installed, run the Entity Model builder.

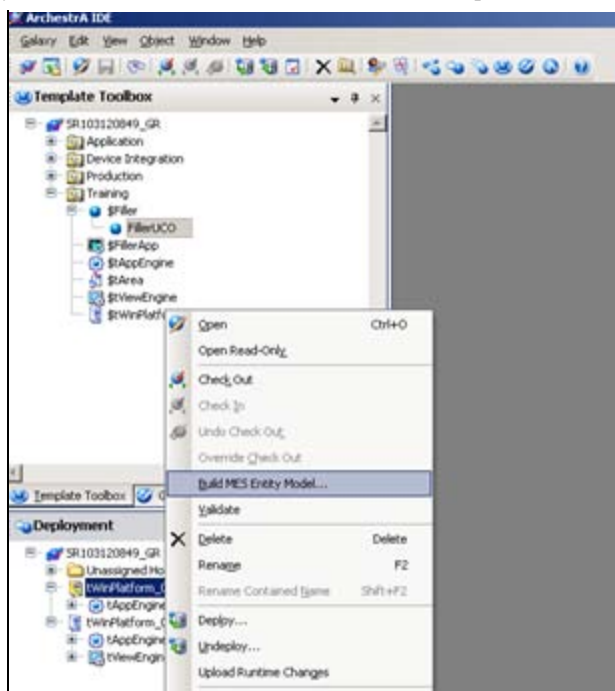


FIGURE 1: RUN MES ENTITY MODEL

You will see that it failed due to there are no valid UCO or OCO configured in the system even though the UCO and/or OCO do actually exist.

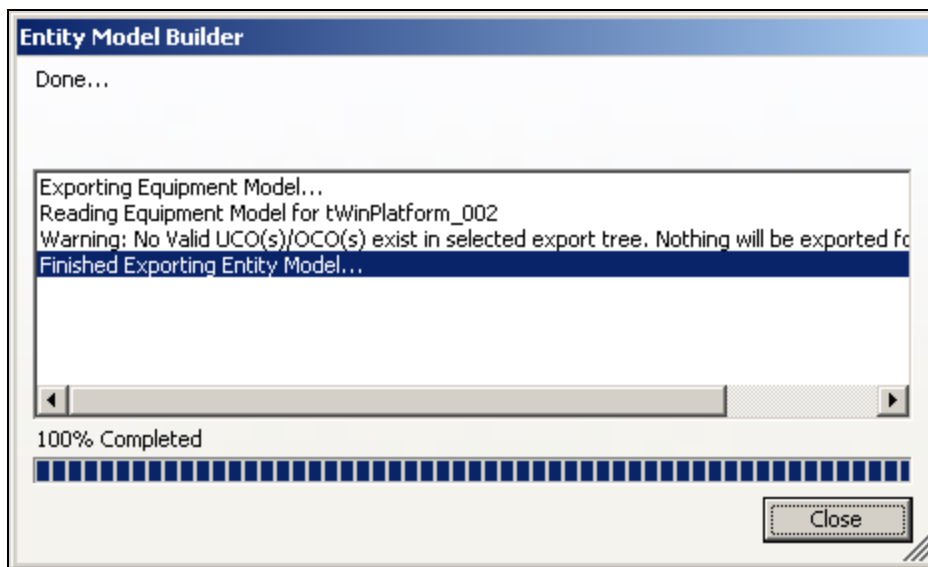


FIGURE 2: ENTITY MODEL BUILDER ERRORS

In the SMC you will also see these errors:

```
Info | EntityModelBuilder | Exporting Equipment Model...  
Info | EntityModelBuilder | Reading Equipment Model for tWinPlatform_002  
Warning | EntityModelBuilder | Warning: No Valid UCO(s)/OCO(s) exist in selected export tree. Nothing will be exported for this selection.
```

2. To resolve this problem open the UCO or OCO Template in the Template Tool Box.
3. Select any of the configurable sections. In this example the **Raw Reason Code/Running** attribute is modified.

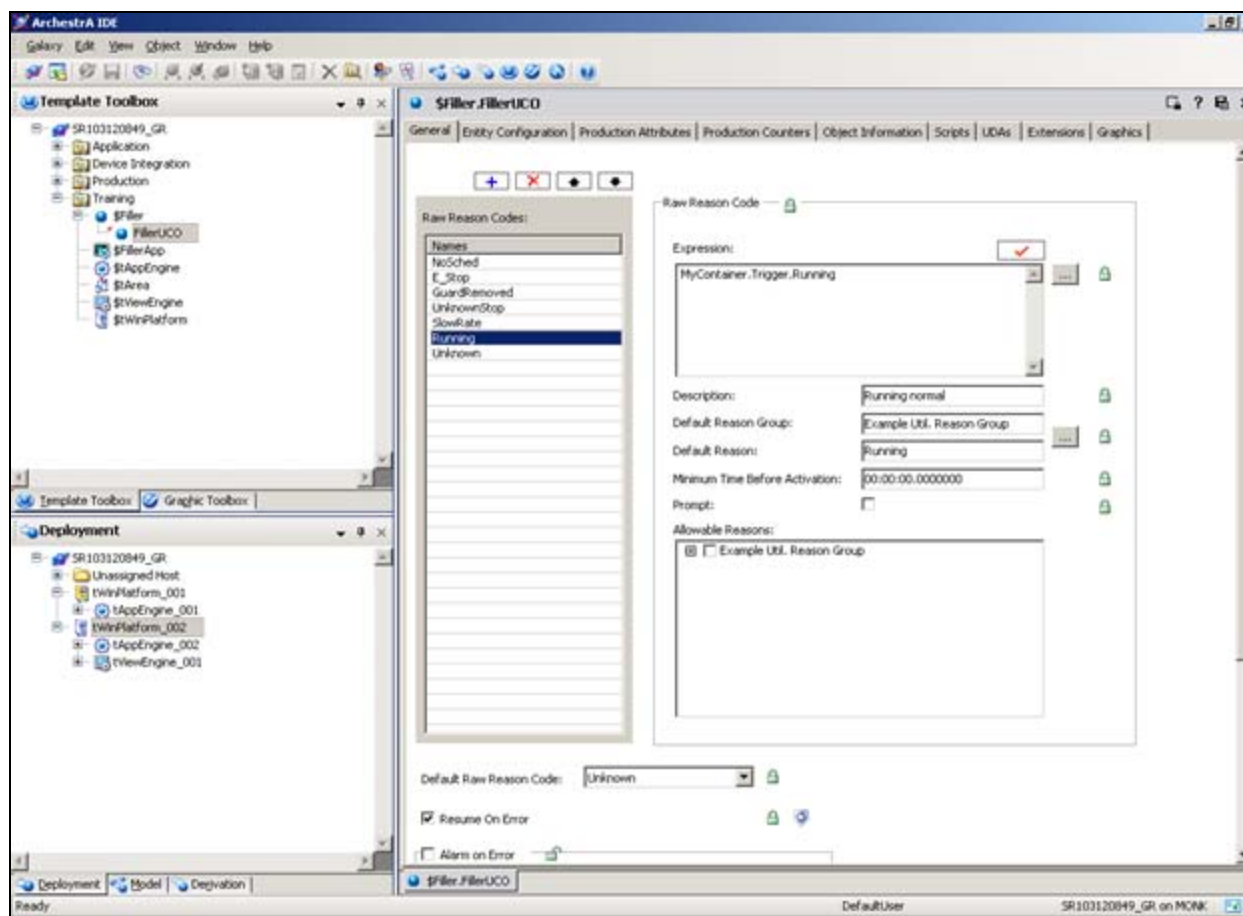


FIGURE 3: CONFIGURE THE GALAXY OBJECT

4. Next Save your changes and close the template.

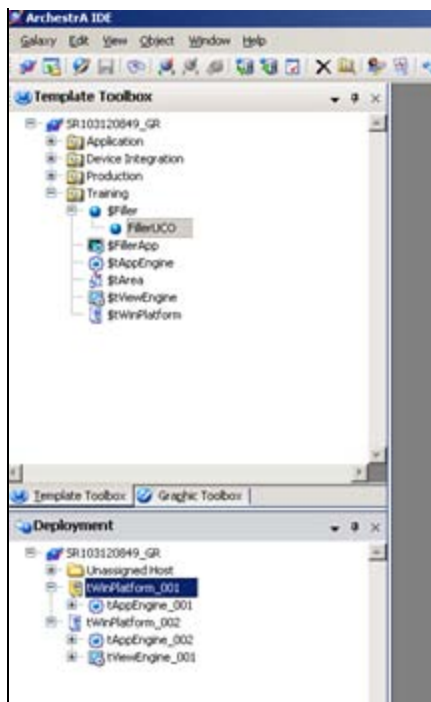


FIGURE 4: SAVE AND CLOSE THE TEMPLATE

5. Switch to the **Deployment** view and run the Entity Model builder.

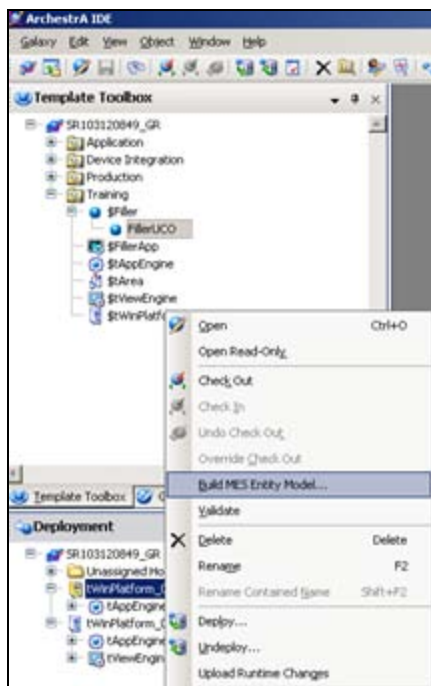


FIGURE 5: RE-START MES ENTITY MODEL BUILDER

You will see now that MES database and Galaxy database are synced.

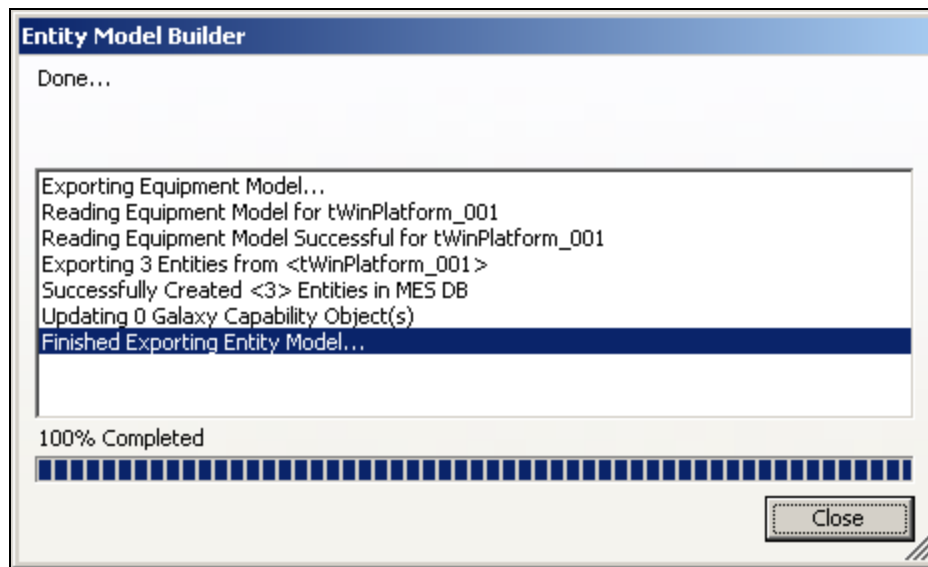


FIGURE 6: ENTITY MODEL BUILDER SYNCHRONIZATION

In the SMC you will now see that everything was exported and created and the two database are now synced.

```
Info|WWPackageManager|Wonderware SSC - Version 7,0,100,1 (3 : 1.1) (2 : 4.1) (3 : 5.0.97)
Info|EntityModelBuilder|Exporting Equipment Model...
Info|EntityModelBuilder|Reading Equipment Model for tWinPlatform_002
Warning|EntityModelBuilder|Warning: No Valid UCO(s)/OCO(s) exist in selected export tree. Nothing will be exported for this selection.
Info|EntityModelBuilder|Exporting Equipment Model...
Info|EntityModelBuilder|Reading Equipment Model for tWinPlatform_001
Info|EntityModelBuilder|Reading Equipment Model Successful for tWinPlatform_001
Info|EntityModelBuilder|Exporting 3 Entities from <tWinPlatform_001>
Info|EntityModelBuilder|Successfully Created <3> Entities in MES DB
Info|EntityModelBuilder|Updating 0 Galaxy Capability Object(s)
Info|EntityModelBuilder|Exporting Equipment Model...
Info|EntityModelBuilder|Reading Equipment Model for tWinPlatform_001
Info|EntityModelBuilder|Reading Equipment Model Successful for tWinPlatform_001
Info|EntityModelBuilder|Exporting 3 Entities from <tWinPlatform_001>
Info|EntityModelBuilder|Successfully Created <3> Entities in MES DB
Info|EntityModelBuilder|Updating 0 Galaxy Capability Object(s)
```

J. Godfrey

Tech Notes are published occasionally by Wonderware Technical Support. Publisher: Invensys Systems, Inc., 26561 Rancho Parkway South, Lake Forest, CA 92630. There is also technical information on our software products at [Wonderware Technical Support](#).

For technical support questions, send an e-mail to support@wonderware.com.

 [Back to top](#)

©2011 Invensys Systems, Inc. All rights reserved. No part of the material protected by this copyright may be reproduced or utilized in any form or by any means, electronic or mechanical, including photocopying, recording, broadcasting, or by any information storage and retrieval system, without permission in writing from Invensys Systems, Inc. [Terms of Use](#).