

## [Tech Note 757](#)

# Solving Historian Client Tag Picker Issue in HTTP Communication Mode

---

All Tech Notes, Tech Alerts and KBCD documents and software are provided "as is" without warranty of any kind. See the [Terms of Use](#) for more information.

Topic#: 002535

Created: March 2011

## Introduction

This *Tech Note* shows you how to resolve the issue when tags are not being populated in the Tag Picker area of the Historian Client, and the application is not responsive. This issue can occur if the Historian Client is connected to a Historian Server using the HTTP connection.

## Application Versions

- Wonderware Historian Client v10.0 SP1
- Wonderware Historian 10.0 SP1
- Microsoft SQL Server 2005 SP2 (or later)
- Microsoft SQL SML 3.0

**Note:** If you need to know how to set up and configure SQL SML, see [Tech Note 498 Installing SQLXML on Wonderware Information Server 3.0](#).

## Solution

To work around this issue, you need to manually configure the SQL XML virtual directory to connect to a Wonderware Historian 10.0 Server running SQL Server 2005. To manually configure the virtual directory, do the following:

1. On the Windows taskbar, click **Start > Programs > SQLXML 3.0**, and then click **Configure IIS Support**. The **IIS Virtual Directory Management for SQLXML 3.0** window appears.
2. In the left pane of the window, expand the Server, and then highlight the **Default Web Site** item.

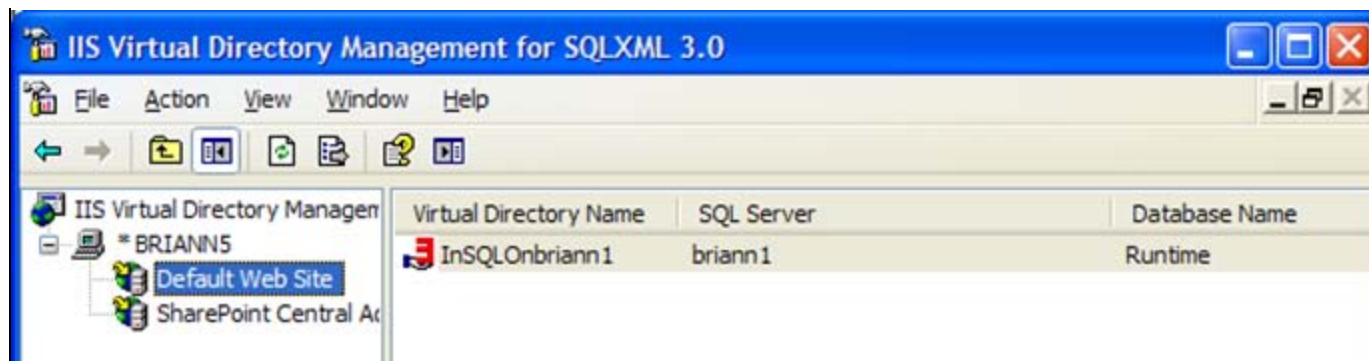
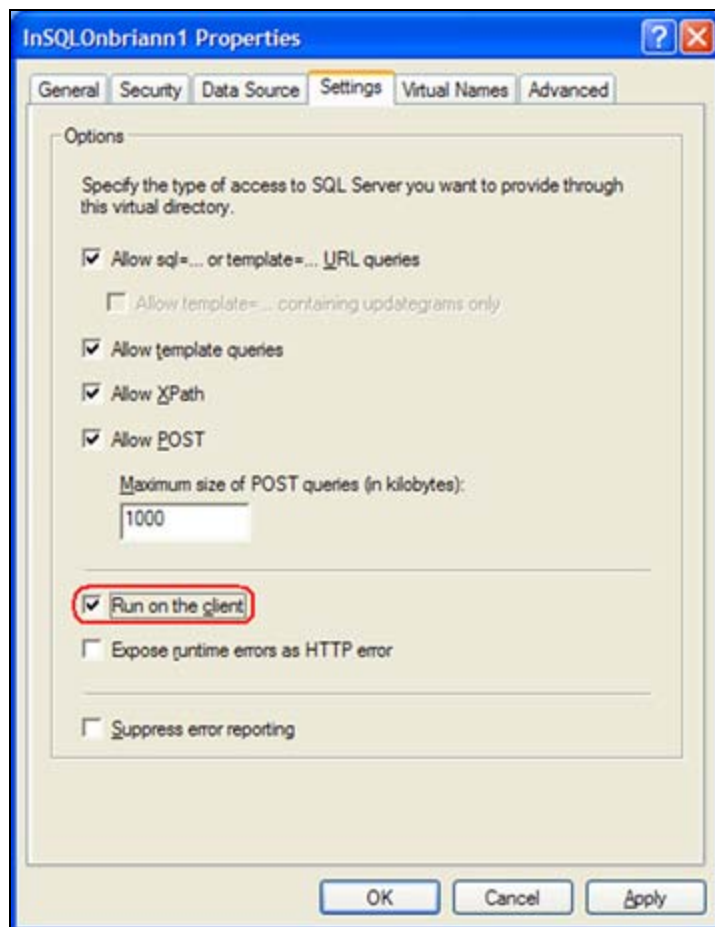


FIGURE 1: DEFAULT WEBSITE VIRTUAL DIRECTORY

3. In the right pane of the window, right-click the listed virtual directory, and click **Properties**.
4. Click the **Settings** tab.
5. Click the **Run on the client** option.



## FIGURE 2: RUN ON THE CLIENT

B. Nguyen

*Tech Notes* are published occasionally by Wonderware Technical Support. Publisher: Invensys Systems, Inc., 26561 Rancho Parkway South, Lake Forest, CA 92630. There is also technical information on our software products at [Wonderware Technical Support](#).

For technical support questions, send an e-mail to [support@wonderware.com](mailto:support@wonderware.com).

 [Back to top](#)

©2011 Invensys Systems, Inc. All rights reserved. No part of the material protected by this copyright may be reproduced or utilized in any form or by any means, electronic or mechanical, including photocopying, recording, broadcasting, or by any information storage and retrieval system, without permission in writing from Invensys Systems, Inc. [Terms of Use](#).