

## Tech Note 793

# Capturing a Memory Dump File Using the Microsoft® Debug Diagnostic Tool (64bit)

---

All Tech Notes, Tech Alerts and KBCD documents and software are provided "as is" without warranty of any kind. See the [Terms of Use](#) for more information.

Topic#: 002576

Created: September 2011

Updated: April 2012

## Introduction

Use the Debug Diagnostic Tool (DebugDiag) for troubleshooting issues such as hangs, slow performance, memory leaks or fragmentation, and crashes in any user-mode process. The tool includes additional debugging scripts for Internet Information Services (IIS) applications, web data access components, COM+ and related Microsoft technologies.

**Note:** This application supports 64-bit (x64) systems. For 32-bit procedure, see [Tech Note 726 Capturing a Memory Dump File Using the Microsoft® Debug Diagnostic Tool \(32bit\)](#).

This *Tech Note* provides instruction for creating a Memory Dump for a designated issue type.

## Application Versions

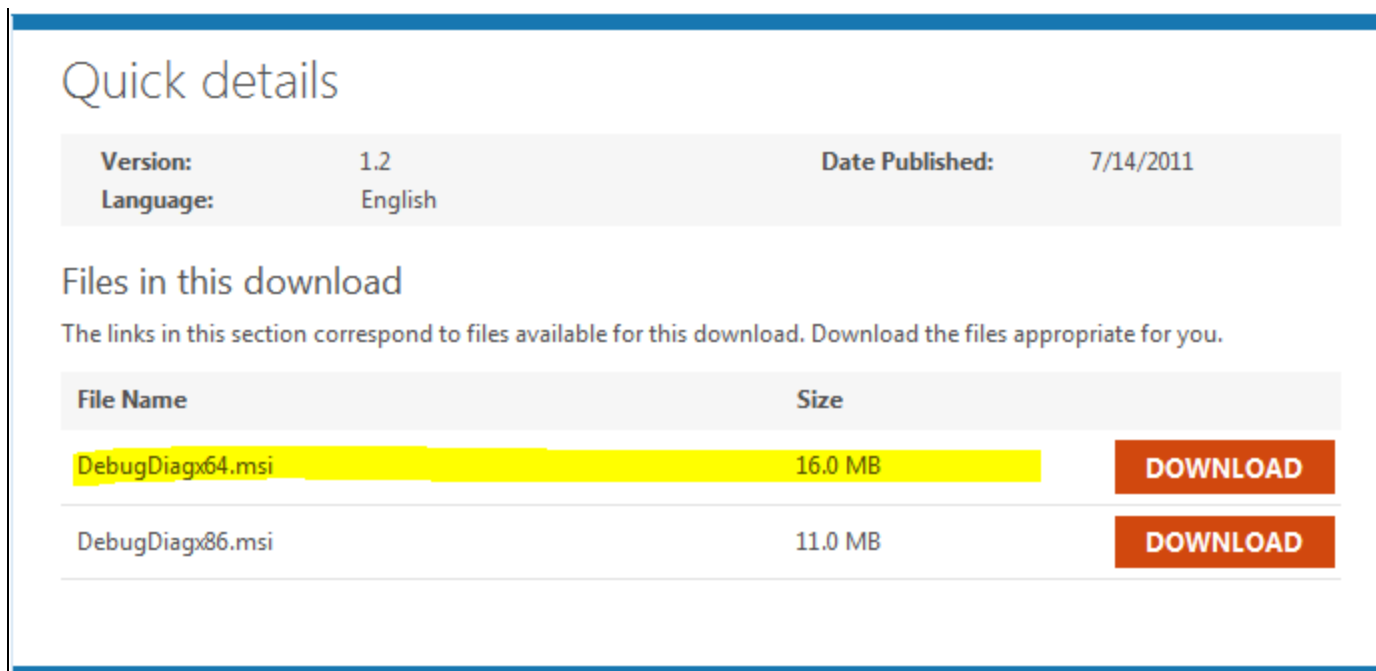
- DebugDiag 1.2 (x64)

## Generating Memory Dumps

To use DebugDiag effectively, you need to first identify what kind of issue you are troubleshooting (e.g. a crash, hang, slow performance, or memory and handle usage). This step will aid in configuring the tool appropriately to get the right data, then to identify the root cause of the problem in order to resolve it.

## Preparing the Environment

1. [Download the DebugDiag.msi file](#). Do not download the x86 version as it is not the correct version. For this *Tech Note*, we use DebugDiagx64.msi (1.2).



## Quick details

<b>Version:</b>	1.2	<b>Date Published:</b>	7/14/2011
<b>Language:</b>	English		

### Files in this download

The links in this section correspond to files available for this download. Download the files appropriate for you.

File Name	Size	
DebugDiagx64.msi	16.0 MB	<a href="#">DOWNLOAD</a>
DebugDiagx86.msi	11.0 MB	<a href="#">DOWNLOAD</a>

**FIGURE 1: MICROSOFT DEBUG DIAGNOSTIC TOOL DOWNLOAD (16 MB)**

2. Save the file to a folder of your choice and double-click it to begin the installation.
3. Open DebugDiag 1.2 by clicking **All Programs/Debug Diagnostic Tool 1.2**.
4. When the **Select Rule Type** window appears, click the **Crash** or **IIS Hang** option as appropriate, then click **Next** (Figure 2 below).

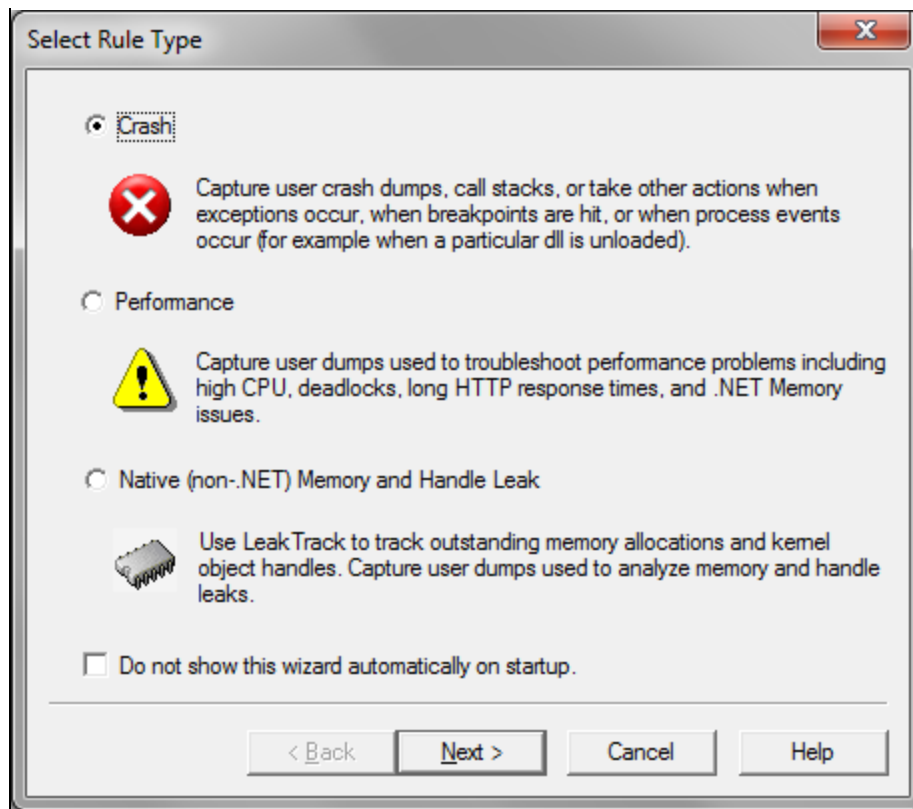
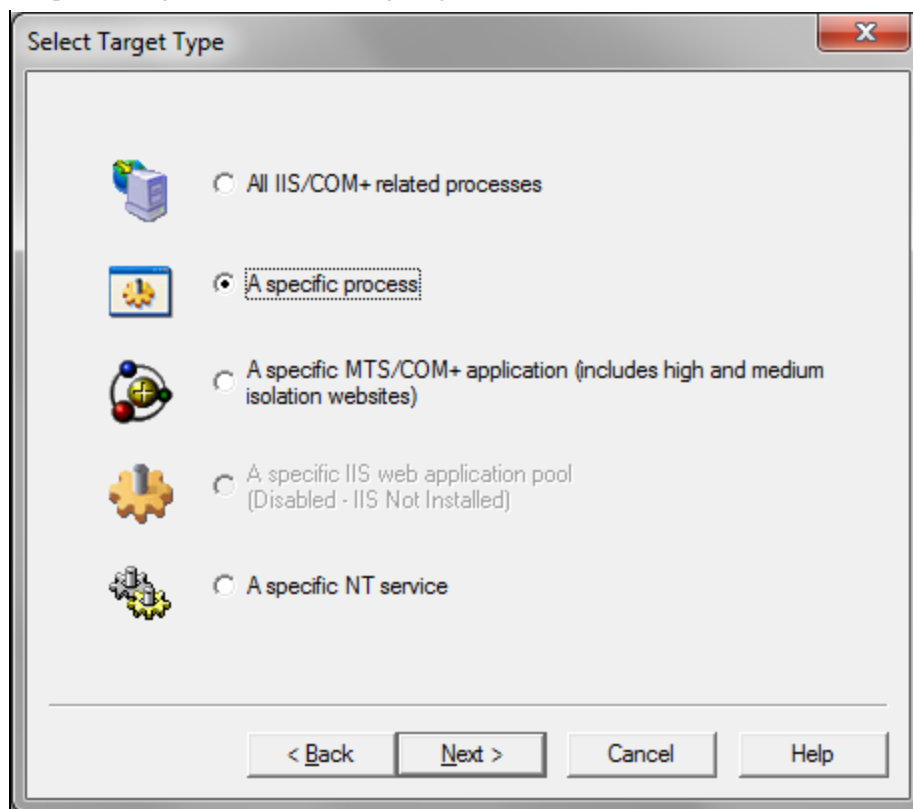


FIGURE 2: SELECT RULE TYPE

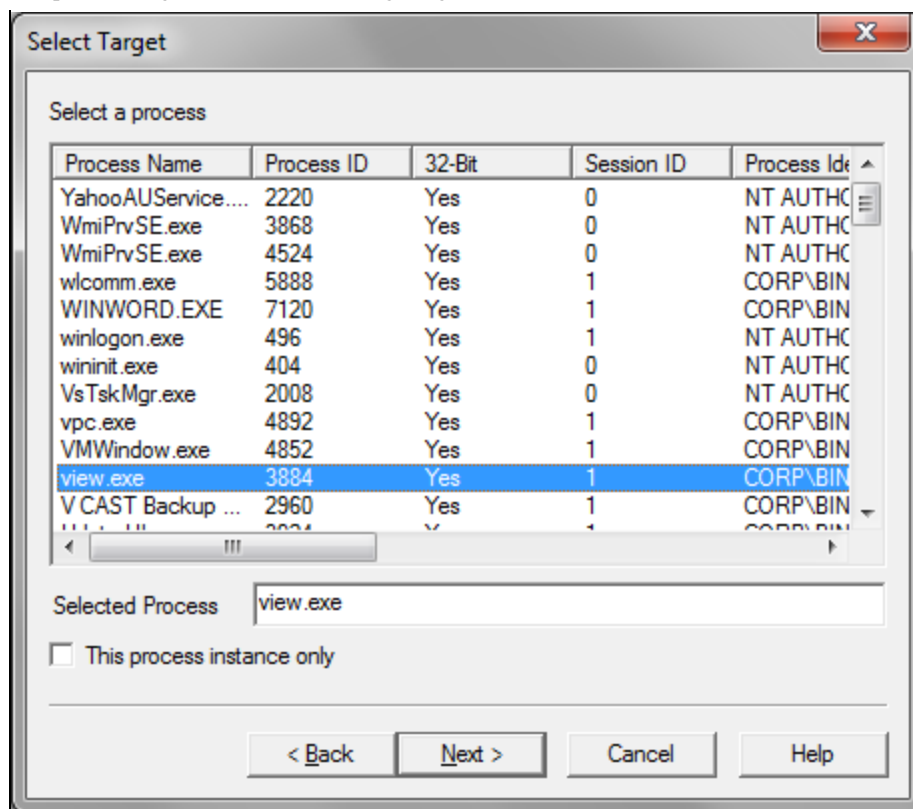
5. In the **Select Target Type** dialog box, click the **A specific process** option, then click **Next** (Figure 3 below).



**FIGURE 3: SELECT TARGET TYPE**

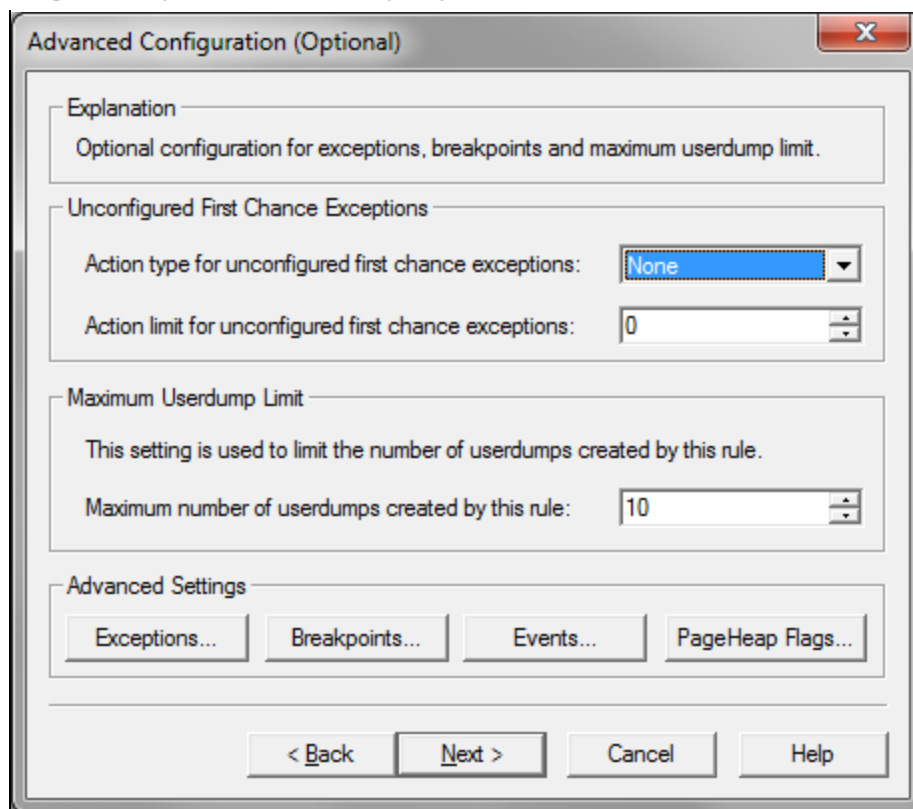
6. Sort the target list by **Process Name** and find the process you need to troubleshoot. Click a process in the list to highlight it (Figure 4 below).
7. Make sure that the **This process instance only** option is NOT checked, then click **Next**.

**Note:** For this example, **view.exe** was crashing. However, the DebugDiag tool can be used for any process.



**FIGURE 4: SELECT A TARGET PROCESS**

- Advanced Configuration is optional, so if you do not need it click **Next** without configuring anything (Figure 5 below).



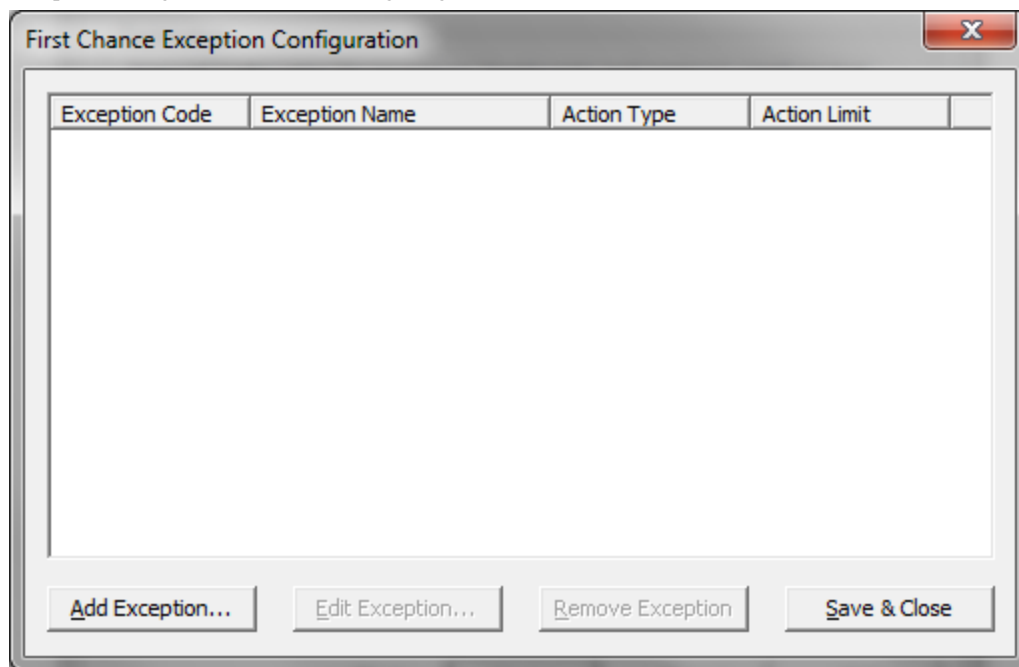
**FIGURE 5: ADVANCED CONFIGURATION (OPTIONAL)**

## Optional Configuration Details

The following settings are optional but provide an extra level of control for configuring your dump file. For this example, you can set a few breakpoints and Exception codes using the **Advanced Configuration** dialog box.

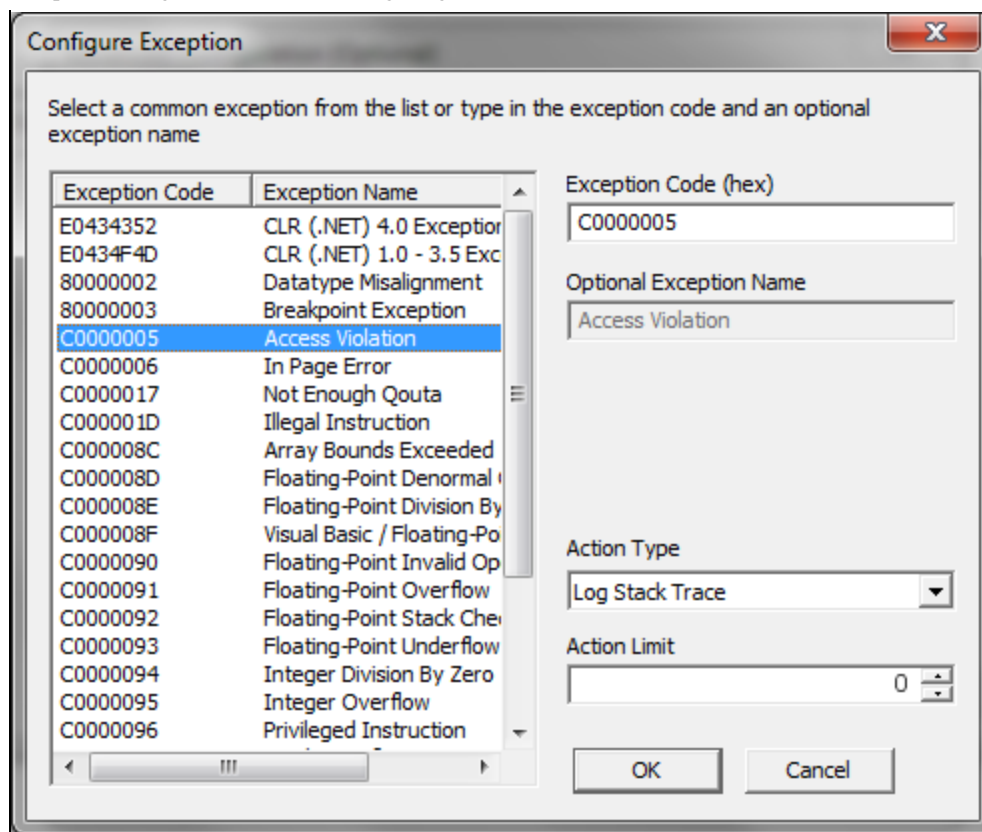
If you want to skip Advanced Configuration details, go to [Step 11 below](#).

1. Click **Exceptions** (Figure 5 above). The **Exception Configuration** window appears (Figure 6 below).
2. Click **Add Exception** (Figure 6 below).



**FIGURE 6: FIRST CHANCE EXCEPTION CONFIGURATION**

3. For this example, select the exception code **C0000005 Access Violation**.
4. Keep the **Action Type** set to **Log Stack Trace** and change the **Action Limit** to **0**. This setting indicates no limit on the number of callstacks to output to the log file whenever there is an access violation within the process.



**FIGURE 7: SELECT AN EXCEPTION**

5. Click **OK**. The Exception Code appears in the Configuration panel.



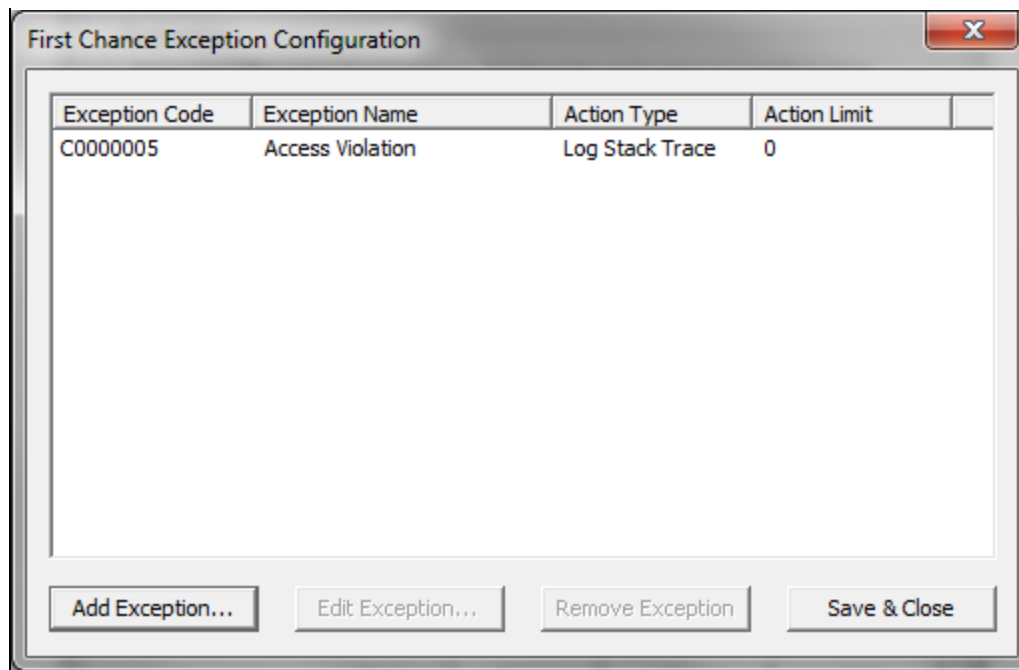
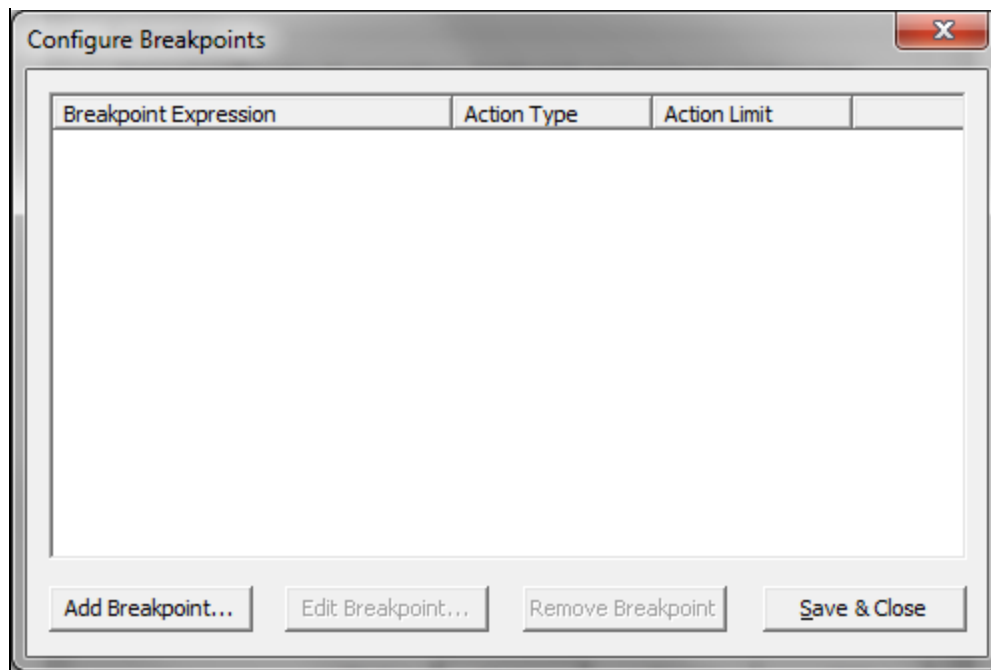


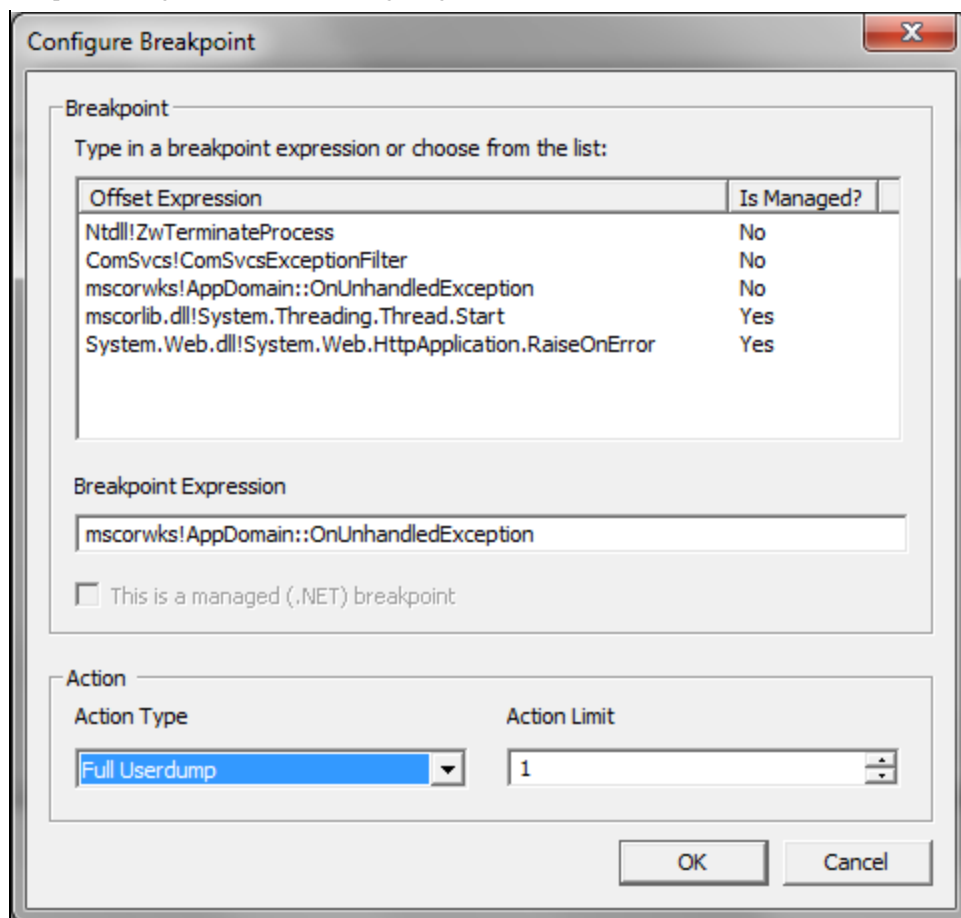
FIGURE 8: EXCEPTION CODE PANEL

6. Click **Save & Close**.
7. Click the **Breakpoints** button near the bottom of the dialog box (Figure 5 above). The **Configure Breakpoint** dialog box appears.
8. Click **Add Breakpoint** (Figure 9 below).



**FIGURE 9: CONFIGURE BREAKPOINTS DIALOG BOX**

For example, if you select **mscorwks!AppDomain::OnUnhandledException** in the list, then select **Full Userdump** from the **Action Type** list and set an Action Limit of 1 (Figure 10 below).



**FIGURE 10: CONFIGURE BREAKPOINT**

9. Click **OK**. The entry appears in the **Breakpoint Expression** panel (Figure 11 below).

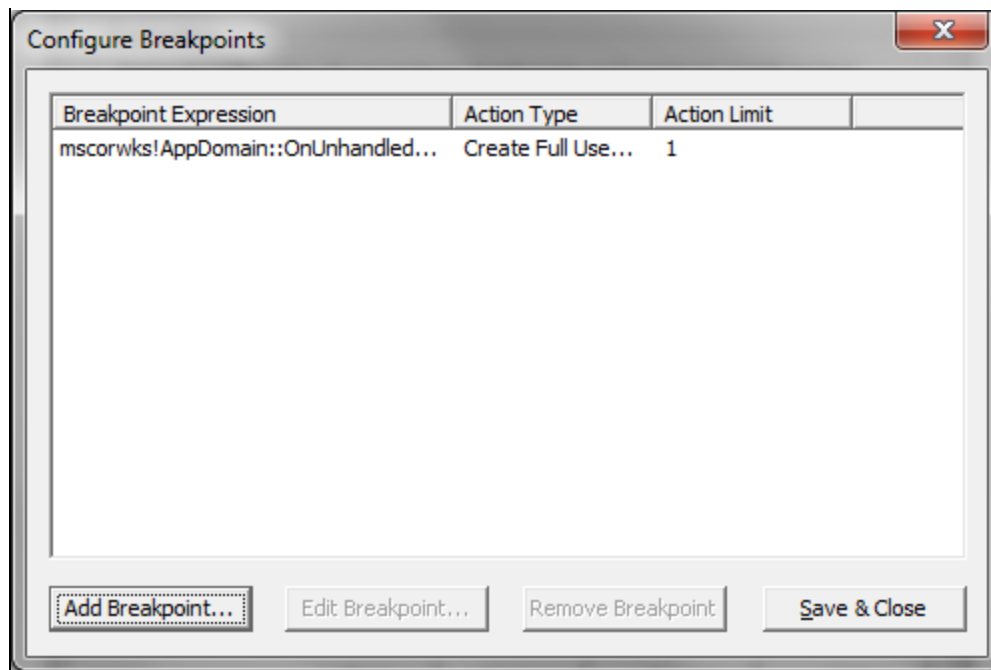


FIGURE 11: BREAKPOINT EXPRESSION

10. Click **Save & Close**.
11. On the **Advanced Configuration** dialog box click **Next**. ([Figure 5 above](#)).
12. Set the path for the dump file (Figure 12 below).

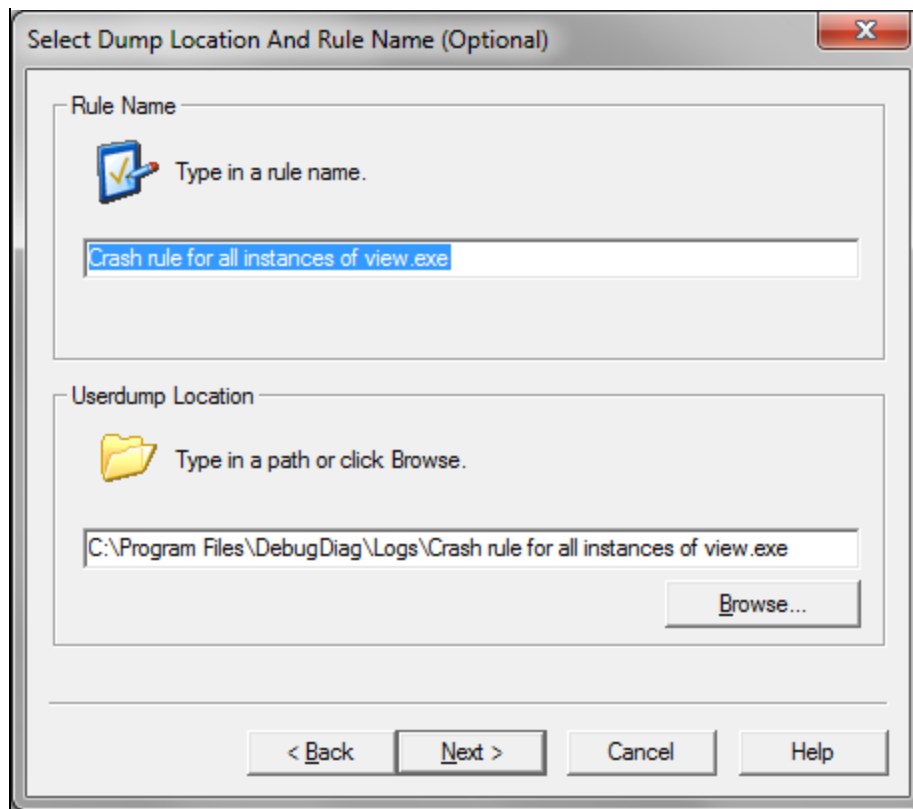
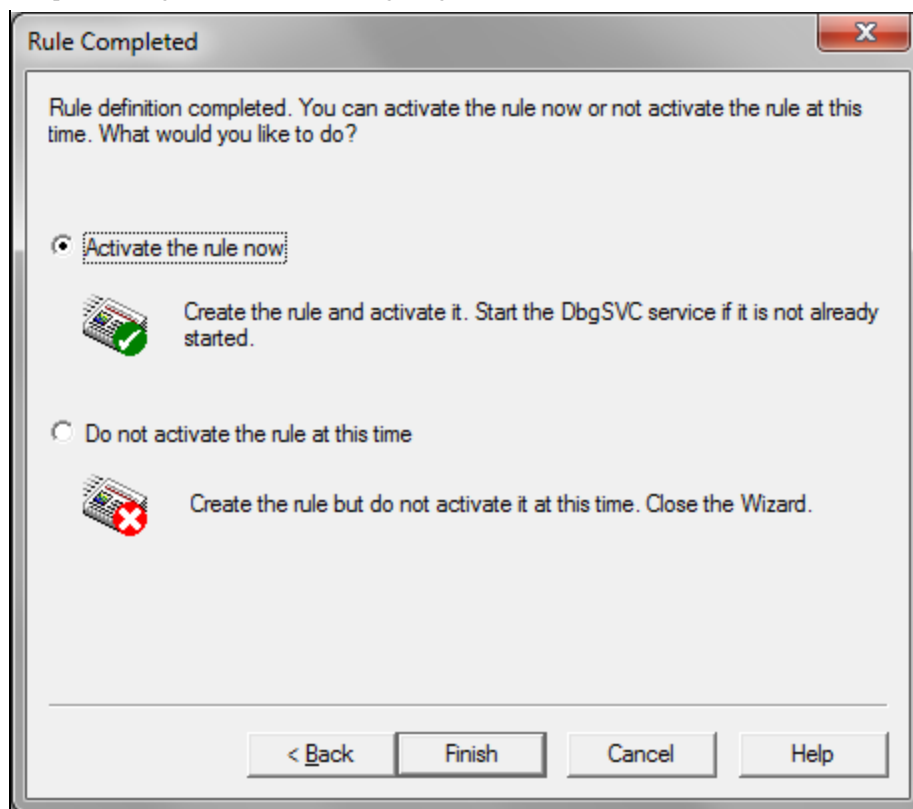


FIGURE 12: SET THE DUMP FILE PATH

13. Click **Next**, then click **Activate the Rule** and **Finish** (Figure 13 below).



**FIGURE 13: ACTIVATE THE RULE AND FINISH CONFIGURATION**

You now have attached DebugDiag to the process. If there are any access violations in this process you get a callstack of that failure in the log file that is created in that event. If the process shuts down for any reason you will get a full user dump of that process.

You can close the DebugDiag window since the debugger uses a service to help with the debugging. When you open DebugDiag again it displays a list of rules that are running and how many dumps it has collected thus far.

Review the Help Files for the DebugDiag Tool. They are very helpful and include lots of screenshots to illustrate. The help file is installed at: **C:\Program Files\DebugDiag\DebugDiag.chm**.

B. Shah

*Tech Notes* are published occasionally by Wonderware Technical Support. Publisher: Invensys Systems, Inc., 26561 Rancho Parkway South, Lake Forest, CA 92630. There is also technical information on our software products at [Wonderware Technical Support](#).

For technical support questions, send an e-mail to [wwsupport@invensys.com](mailto:wwsupport@invensys.com).

 [Back to top](#)

©2012 Invensys Systems, Inc. All rights reserved. No part of the material protected by this copyright may be reproduced or utilized in any form or by any means, electronic or mechanical, including photocopying, recording, broadcasting, or by any information storage and retrieval system, without permission in writing from Invensys Systems, Inc.  
[Terms of Use](#).