

## [Tech Note 795](#)

# Locating References within ArcestrA Symbols

---

All Tech Notes, Tech Alerts and KBCD documents and software are provided "as is" without warranty of any kind. See the [Terms of Use](#) for more information.

Topic#: 002578

Created: September 2011

## Introduction

This *Tech Note* explains how to search for and locate references contained in ArcestrA Symbols. One reason that this might be needed is if the InTouch tagname gets changed and the integrator would like to find all the references to that InTouch tagname that appear in ArcestrA Symbols.

References in ArcestrA Symbols can be found in the following places.

- [ArcestrA Symbol Custom Properties in the InTouch Window](#)
- [In a Link Defined within an ArcestrA Symbol](#)

## Application Versions

- Wonderware Application Server 3.0 and later

## ArcestrA Symbol Custom Properties in the InTouch Window

You can search for references by using the following methods:

- [Use the WindowMaker Cross Reference](#)
- [Use the WindowMaker Printout \(Print to File\)](#)

## Use the WindowMaker Cross Reference

For this example, the Custom Property for the ArcestrA Symbol **TestSym1** in the InTouch window is set to **sectag**. Sectag is an InTouch Memory Integer tag (Figure 1 below).

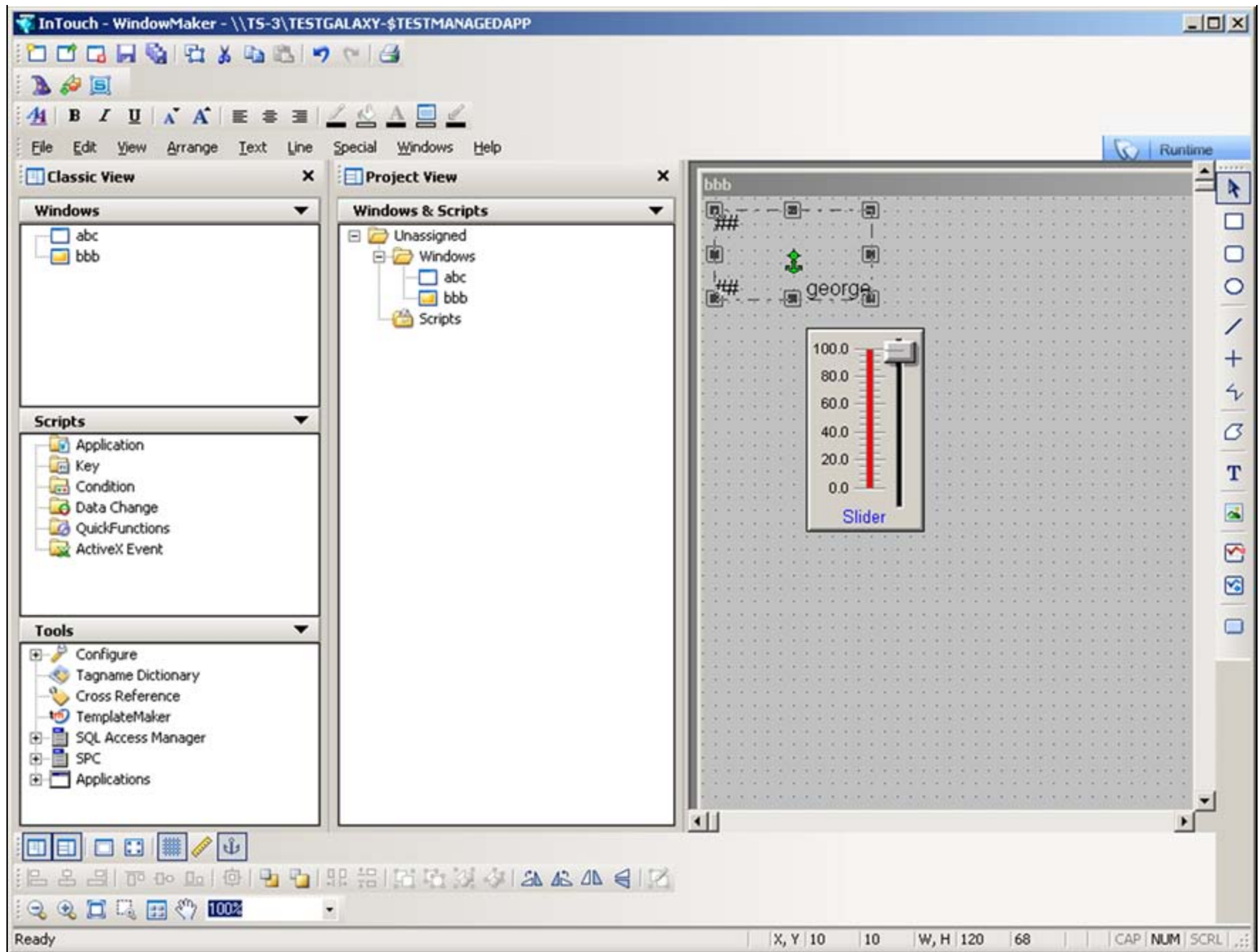
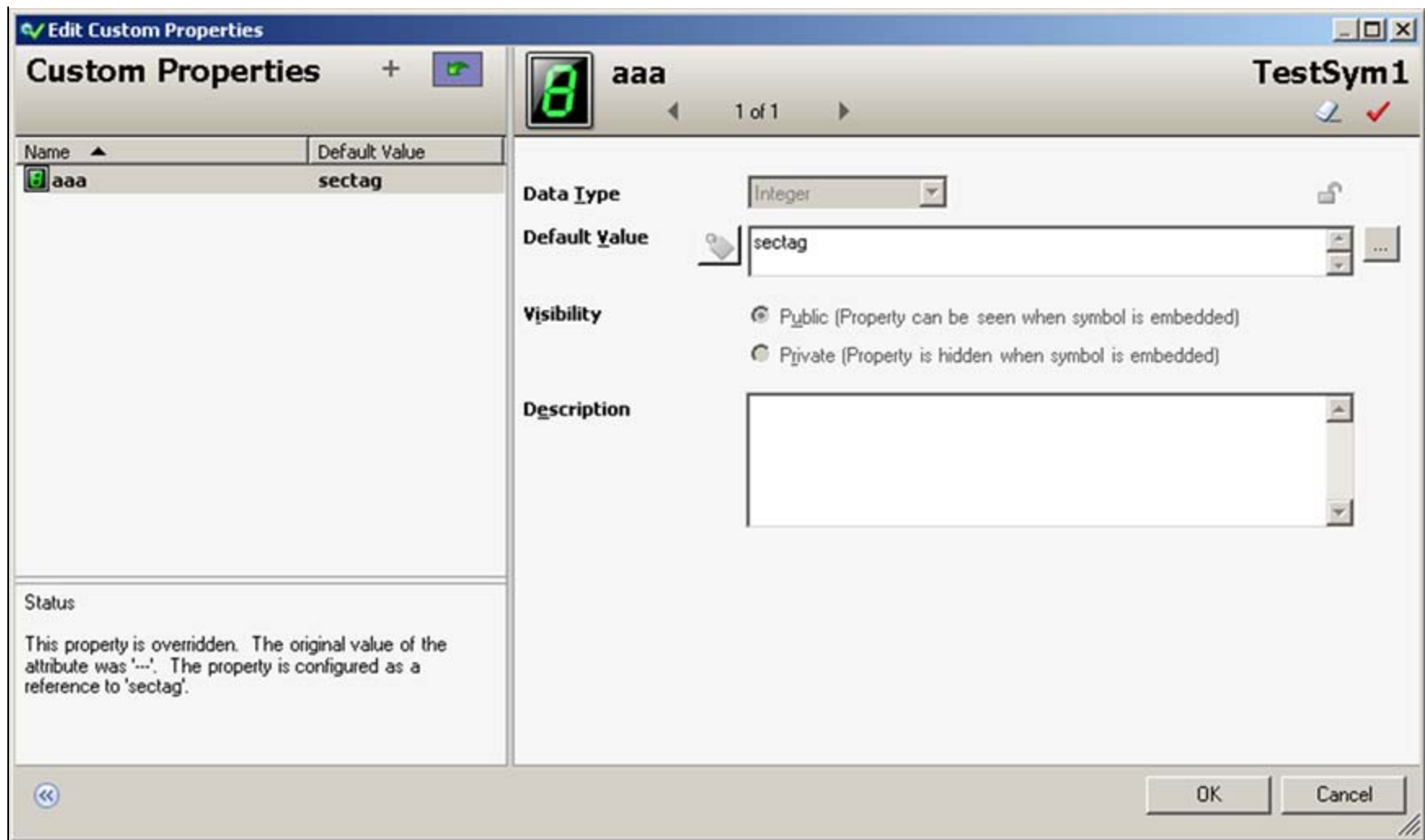


FIGURE 1: TEST SYMBOL



**FIGURE 2: SECTAG CUSTOM PROPERTY**

1. Run the **InTouch WindowMaker Cross Reference Tool** and type the InTouch tagname in the **Filter** field.
2. Click **Search** (Figure 3 below).

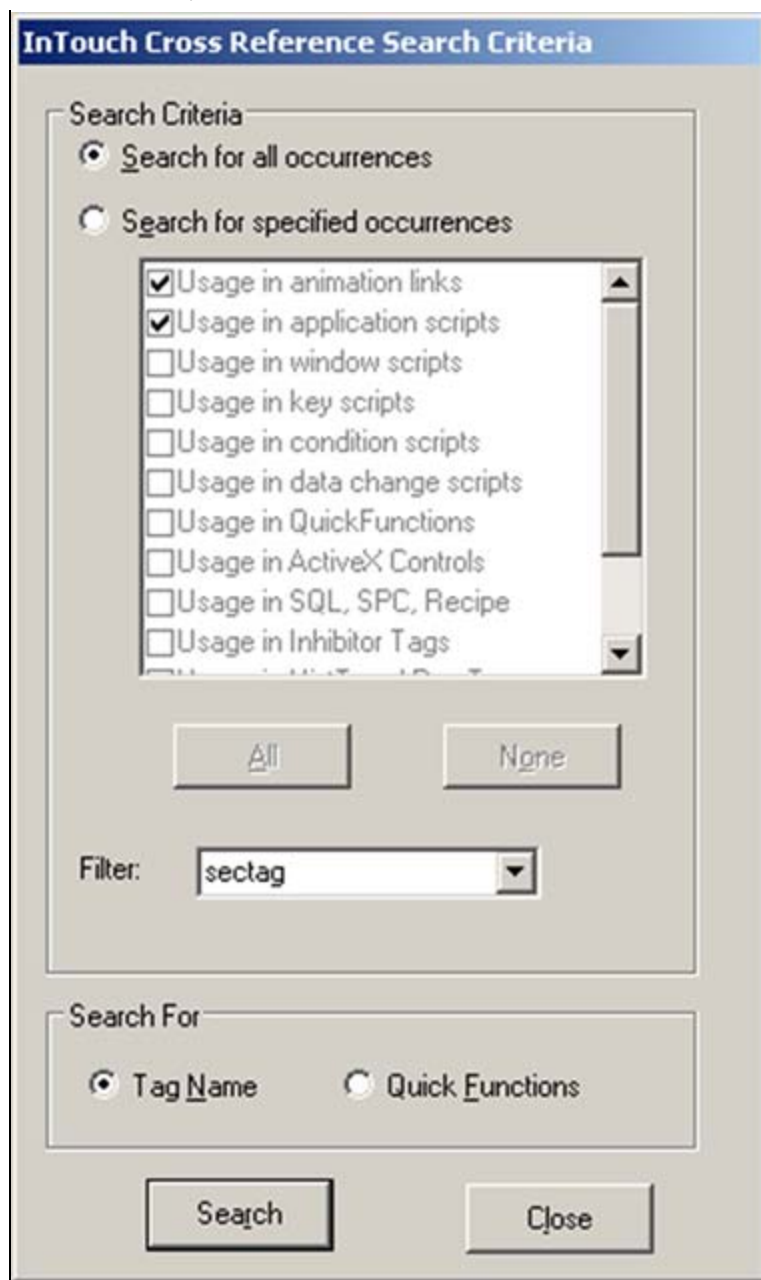


FIGURE 3: INTouch CROSS REFERENCE UTILITY SEARCH

The Cross Reference output shows the window and the location of the ArchestrA Symbol containing the InTouch tagname reference (Figure 4 below).

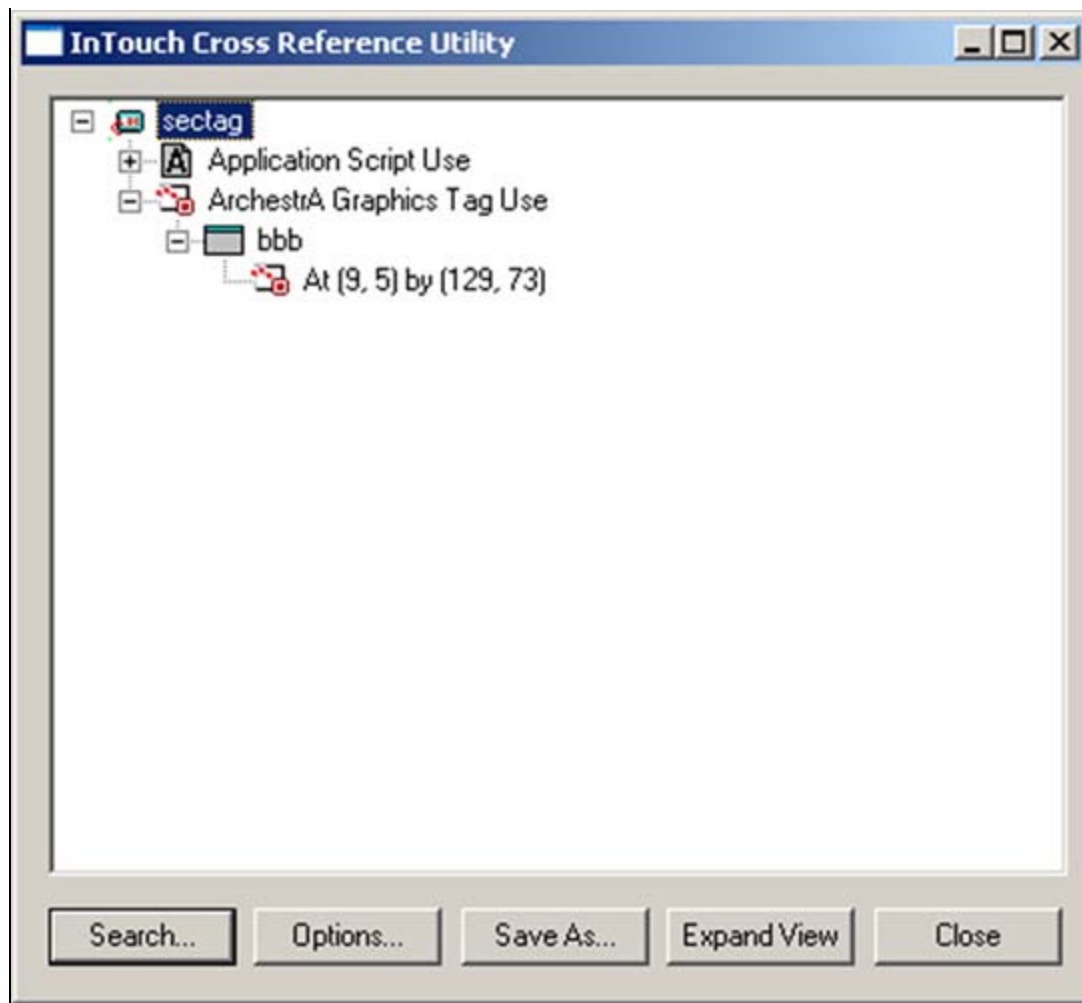


FIGURE 4: CROSS REFERENCE UTILITY SEARCH OUTPUT

## Use WindowMaker Printout (Print to File)

1. In WindowMaker's main menu, click **File/Print** and select All Windows to Print. Be sure to uncheck the **Image/Graphics** option.

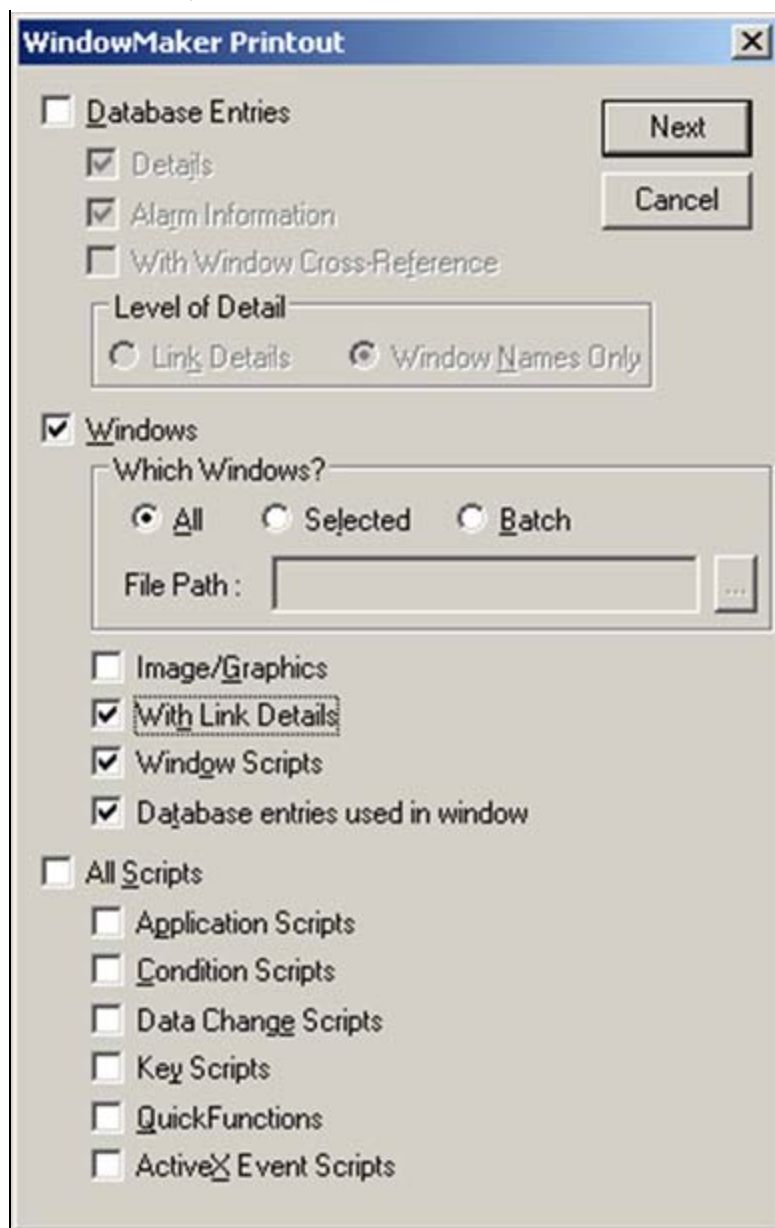


FIGURE 5: WINDOWMAKER PRINTOUT CRITERIA

2. Click **Next**, then select the Output Destination (Figure 6 below).

**Note:** Use the **Ellipsis** button ( ... ) to select a folder of your choice.

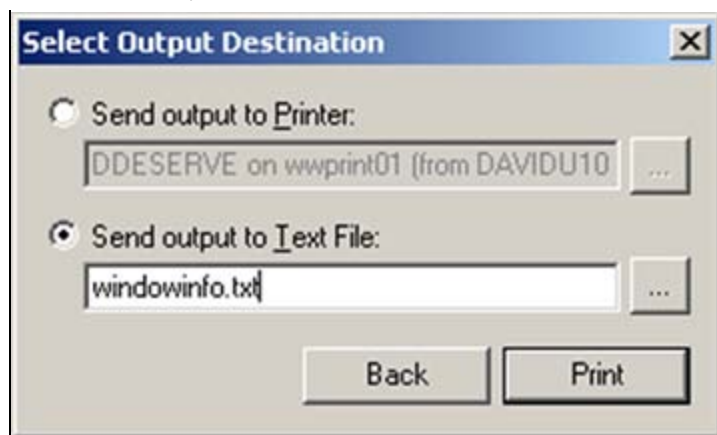


FIGURE 6: SELECT OUTPUT DESTINATION

3. Click **Print**. You can edit the file to search for the reference. For example, the following is an excerpt from the **windowinfo.txt** output file:

```
Object Type: Arcestra Symbol
Location: left: 9 top: 5 right: 129 bottom: 73

Custom Properties:

Property Name : aaa
Property Type : Integer
Property Default Value : sectag
Property Description :
```

## Search References in a Link Within an Arcestra Symbol

You can search for references in the Arcestra Symbols by using a utility that searches the binary files in the Deployed App's **.vedef** files.

### To search vedef files

1. Deploy an instance of the InTouch Managed App.
2. In the deployed app, locate the folder called **ArcestraSymbols**. For example, **C:\Program Files\Arcestra\Framework\Bin\testgalaxy-TestManagedApp\_001\ArcestraSymbols**.
3. This folder contains the vedef files. Each .vedef file corresponds to an Arcestra Symbol.
4. Find a program that can search binary files for text and search the .vedef files for the InTouch reference.

For this *Tech Note* we used a freeware program called FileSeek (<http://www.fileseek.ca/>).

For this example we use an Arcestra Symbol called **TestSym**.



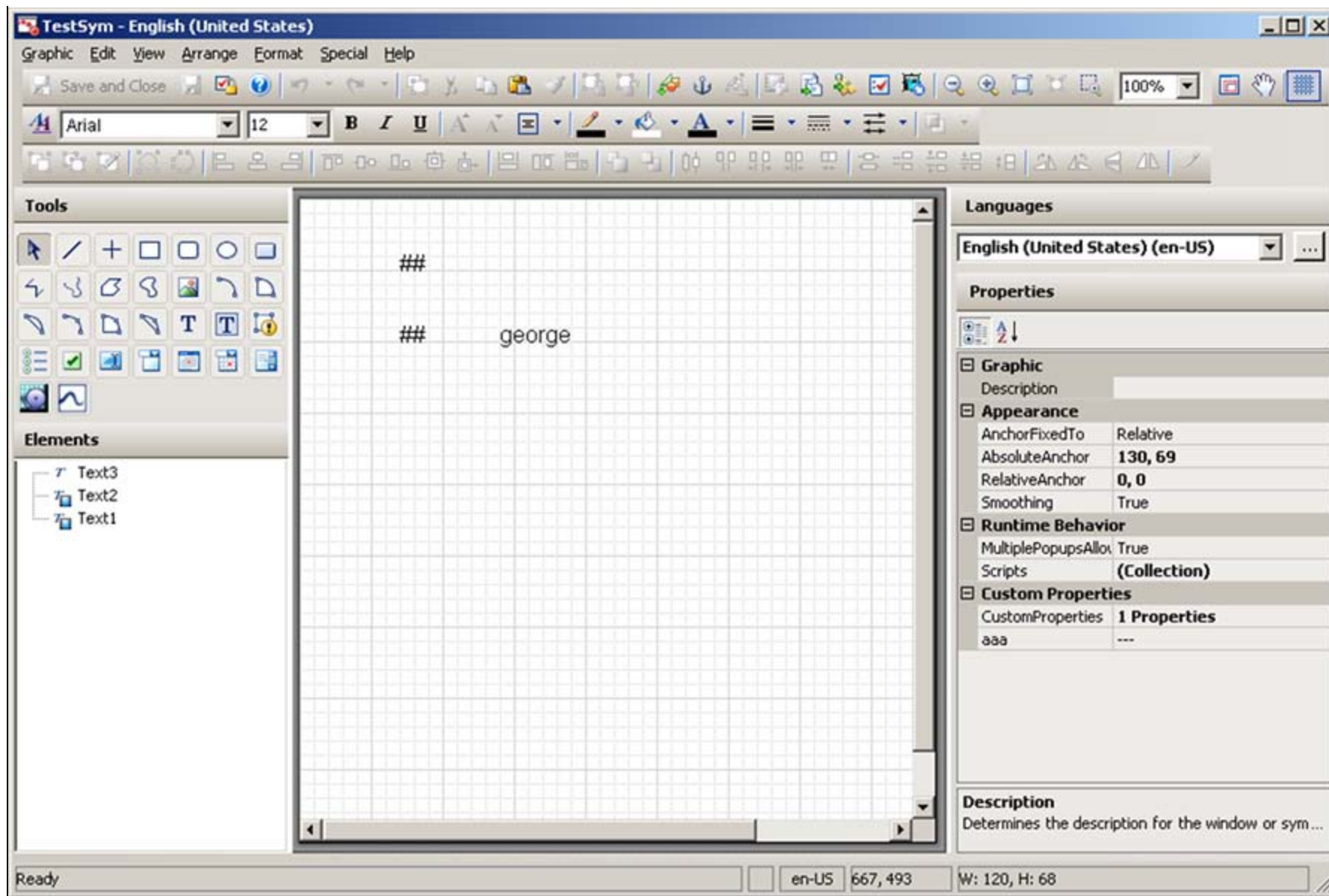


FIGURE 7: TESTSYM SYMBOL

One of the links has the reference **InTouch:George**, which is linked to an InTouch Memory Integer tag called **George** (Figure 8 below).



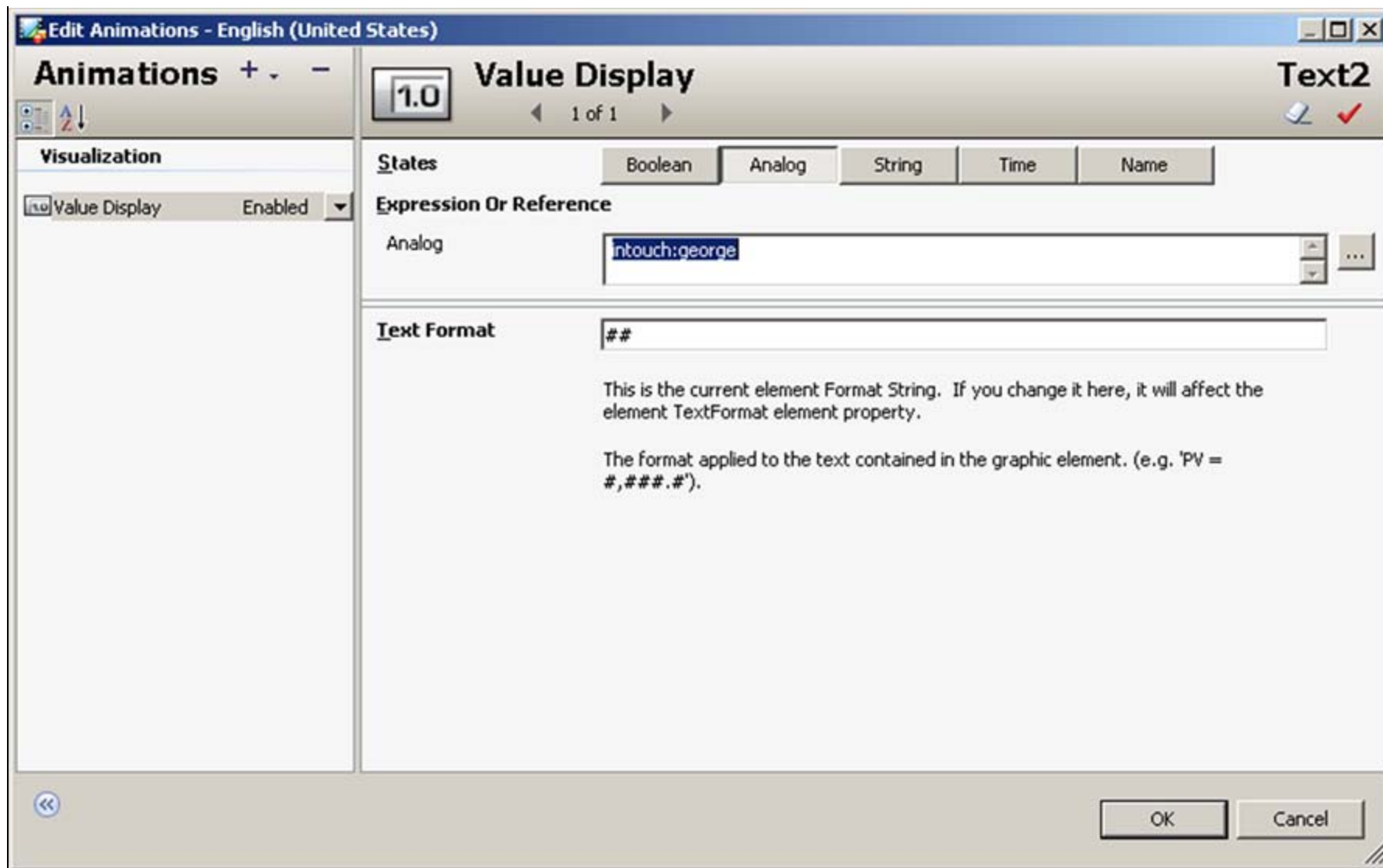


FIGURE 8: GEORGE REFERENCE

The vdef files are located in ...<Application folder name>\ArchestraSymbols (Figure 9 below).

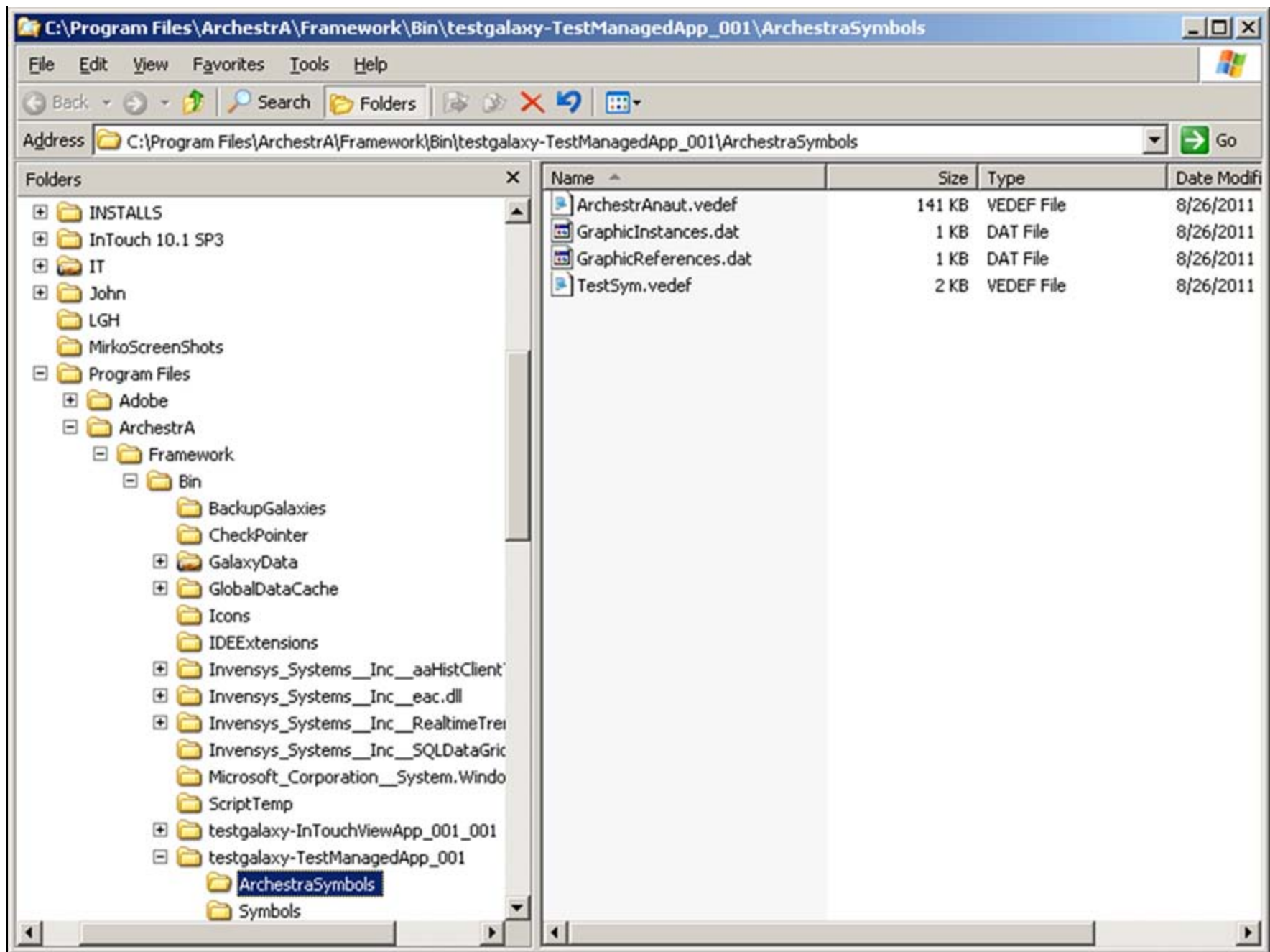


FIGURE 9: TESTSYM.VEDEF FILE LOCATION

To locate the reference(s)

Use the **FileSeek** program to browse to the **ArchestraSymbols** folder.

1. Type the path to the OrchestraSymbols folder in the **Path(s)** field. You can also use the **Browse** button.
2. Type **\*.vedef** to locate only the vedef files and any file name strings.
3. Type the string you are looking for in the **Query** field. In this example, we want to see the **george** reference.
4. Click **Search**. The result will list the vedef files containing the reference (Figure 10 below).

**FileSeek v2.1.3 ~ C:\Program Files\ArchestrA\Framework\Bin\testgalaxy-TestManagedApp\_001\ArchestrASymbols**

**Tools**

**Search**

Path(s): C:\Program Files\ArchestrA\Framework\Bin\ Browse & Append Browse

Include Files: \*.vedef

Exclude Files:

Query: george

Search Mode: Match Full String Search Stop

**Options**

Search sub-folders

Case sensitive query

Only show first result for each File

Process file contents using File Handlers (slower)

Don't show Filename Matches

Don't show Folder Name Matches

More Options

Current: Search completed in 0.3 seconds

File	Path	Line #	File Size	Date Modified	Line
TestSym.vedef	C:\Program Files\Archestr...	1	1,099	Aug 26, 2011 08:03	FD20B0000Arial@A00000aaa00

```

FD20B0000Arial@A00000aaa00 0(001B00tCOOL`00000m0FD''W0{/0{00--00000aaa00000v0?
0B00B0ADAD0B00B0ADAD0Text100000000Arial@A00000##0@00aaa00000aaa00000v0?
0B00B0ADAD0B00B0ADAD0Text200000000Arial@A00000##0@00intouch:george00000intouch:george000/v0?
CO0BHB0A
CO0BHB0AD0Text300000000Arial@A00000george000000000000000000000000000000COB000
wtcMDD01=0c0+w 00 00Arial000Text1 00 0000000Arial000@A0000000##0000Text2 00
0000000Arial000@A0000000##0000Text3 00 00000george0000000Arial000@A0000

```

1 matches found 2 files searched

FIGURE 10: SYMBOL REFERENCE OUTPUT

D. Ujifusa

*Tech Notes* are published occasionally by Wonderware Technical Support. Publisher: Invensys Systems, Inc., 26561 Rancho Parkway South, Lake Forest, CA 92630. There is also technical information on our software products at [Wonderware Technical Support](#).

For technical support questions, send an e-mail to [wwsupport@invensys.com](mailto:wwsupport@invensys.com).

 [Back to top](#)

©2011 Invensys Systems, Inc. All rights reserved. No part of the material protected by this copyright may be reproduced or utilized in any form or by any means, electronic or mechanical, including photocopying, recording, broadcasting, or by any information storage and retrieval system, without permission in writing from Invensys Systems, Inc. [Terms of Use](#).