

Tech Note 798

Installing and Configuring Wonderware Information Server (WIS) Series: Installing WIS 2012 To a Non-System Drive on Windows 7 and 2008 (32- or 64- Bit)

All Tech Notes, Tech Alerts and KBCD documents and software are provided "as is" without warranty of any kind. See the [Terms of Use](#) for more information.

Topic#: 002582
Created: January 2012

Introduction

Installing WIS on a non-system drive can be necessary in certain cases. However, WIS has several dependencies that must be configured when installing on a drive other than the system drive. In most cases the system drive will be C. This Tech Note outlines the configuration process to ensure a correct installation.

Note: Be sure to read the [Known Issues](#) section at the end of this Tech Note. This tech Notes assumes the all the System Platform 2012 is installing in the same Machine, but setup can be configured for individual products like WIS 2012.

Application Versions

- Wonderware Information Server 2012
- Microsoft SQL Server 2008 SP1 (32-bit only)
- Microsoft Office 2007
- Microsoft SharePoint Services 3.0 SP2

Note: SharePoint Services 3.0 is required for the 32-bit OS simply to leverage the Multiviews feature in Information Server (SharePoint Services 2.0 is no longer supported in WIS 2012). Multiviews Functionality is disabled for the 64-Bit OS.

Installation Overview

This installation scenario requires:

- Ensure IIS is installed on the Default drive.
- Install product files.

Preparation

- Ensure that a compatible version of Historian is already installed and properly running. The Historian can be on the same machine, or on another network machine.
- Ensure that SQL Server 2008 is configured for SQL Server and Windows Authentication mode.
- Ensure IIS is installed on the Default Drive and then moving it to non-system drive.

Ensure IIS is Installed on the Default Drive

Use the WIS Mover utility to ensure IIS is installed on the default Drive and to move it to the non-system drive.

1. Download and extract [Move_IIS_Final.zip](#) to your local hard drive.

2. Run **Move_IIS_Final.exe**.
3. Type the target IIS root directory and click the **Move** button (Figure 1 below).

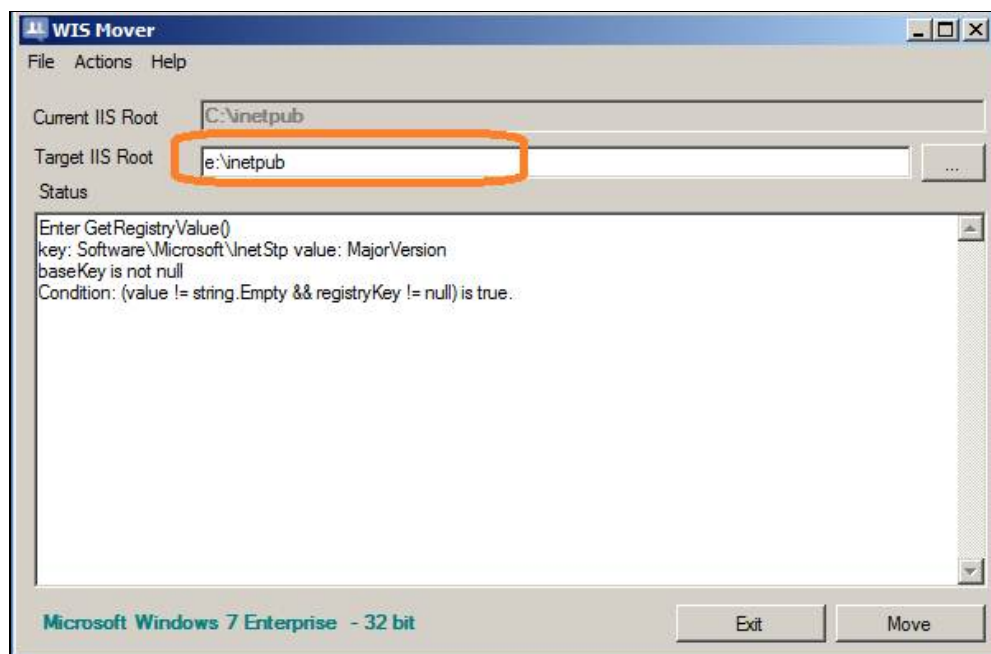


FIGURE 1: TECH SUPPORT IIS MOVER UTILITY

Note: This utility only works with a default installation of IIS and SharePoint. If you have any other application like Information Server installed the **Move** button will be disabled and you can't use the Utility to move the IIS to other drives. Please contact Wonderware Tech support for more details.

Verify that the operation was successful by reading the Status panel. At this point you have a chance to revert the changes if you like (Figure 2 below):

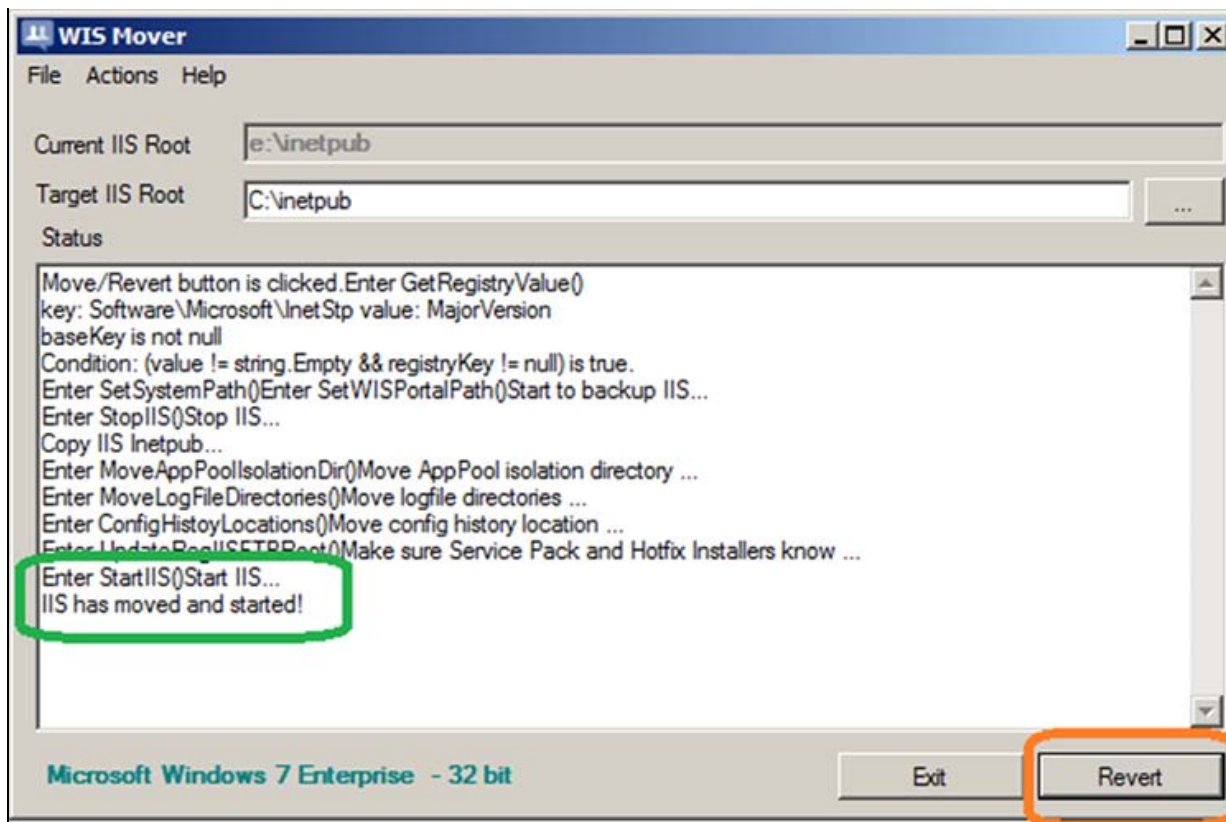


FIGURE 2: TECH SUPPORT IIS MOVER UTILITY INTERFACE

In case you decide to revert the changes, you may get the message that Inetpub directory already exists (Figure 3 below):

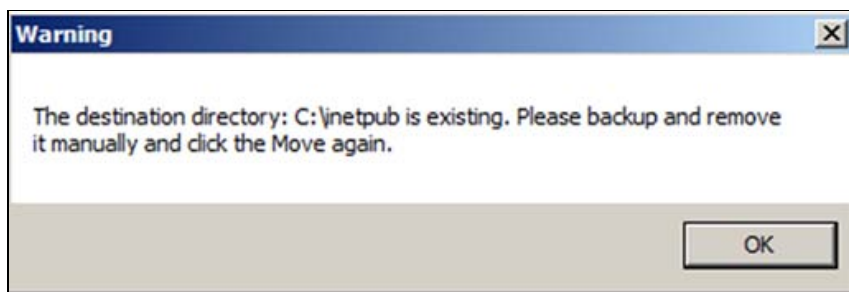


FIGURE 3: TECH SUPPORT IIS MOVER UTILITY ERROR MESSAGE

The Target directory shouldn't exist for this operation to complete properly.

However, you might not be able to delete that directory because you are not the owner of some of the files in that directory, and need to take ownership. When you try to delete the file you see an error message. Figure 4 (below) shows the message and the actual file (**AdminScripts**).

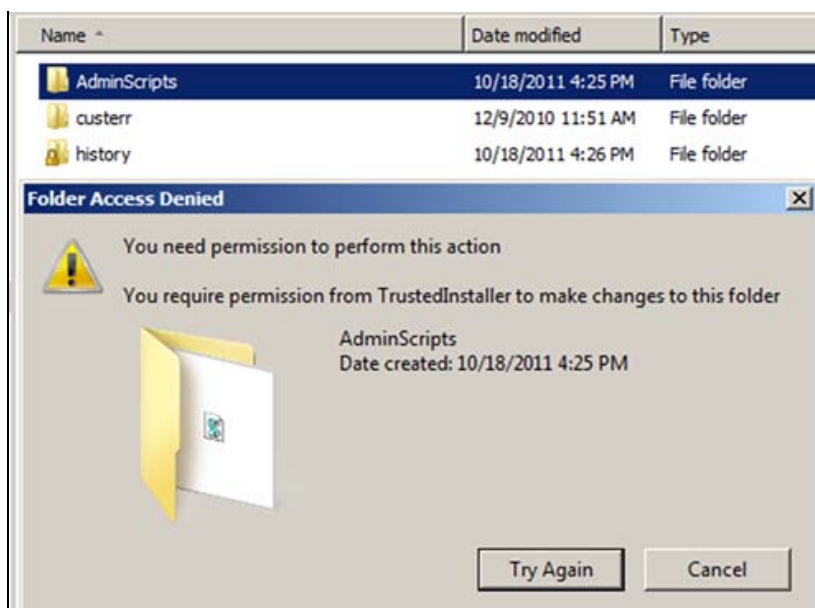


FIGURE 4: ERROR ON DELETING THE INETPUB DIRECTORY

- Click **Cancel**.

To Fix This Issue

1. Locate and right-click the problem directory and click **Properties**.
2. Click the **Security** tab and click the **Advanced** button.
3. Click the **Owner** tab and then click **Edit**.
4. Check the **Replace owner on subcontainers and objects** option, then click the **Other users or groups** button.
5. Select the current user name, and then click **Check names** (Figure 5 below). The current user should have local **Administrator** permissions.

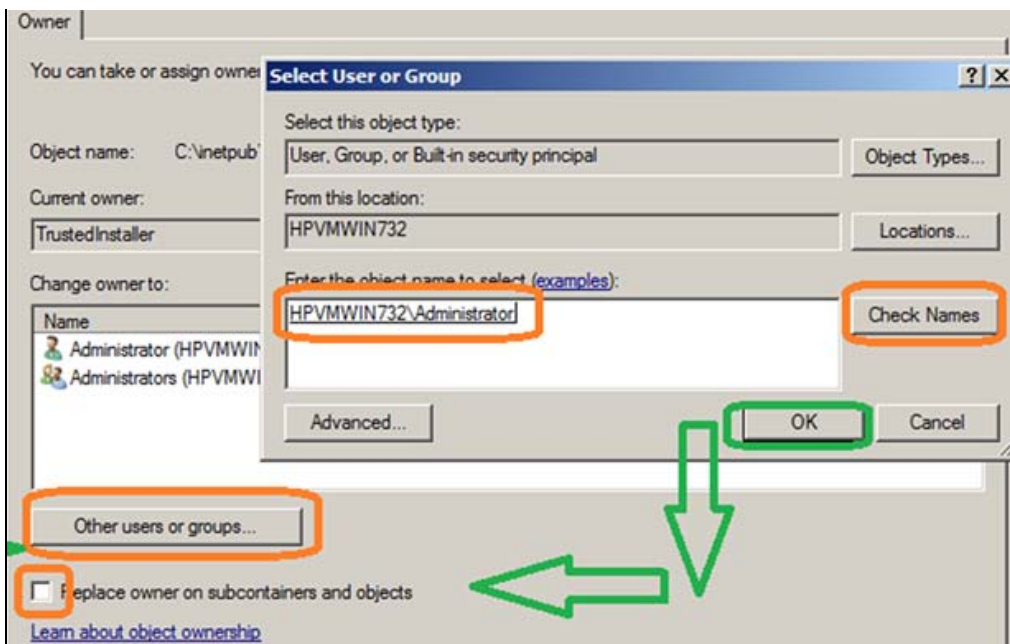


FIGURE 5: TAKING THE OWNERSHIP OF THE INETPUB DIRECTORY.

6. Click **Apply**. You might see a Windows Security message (Figure 6 below):

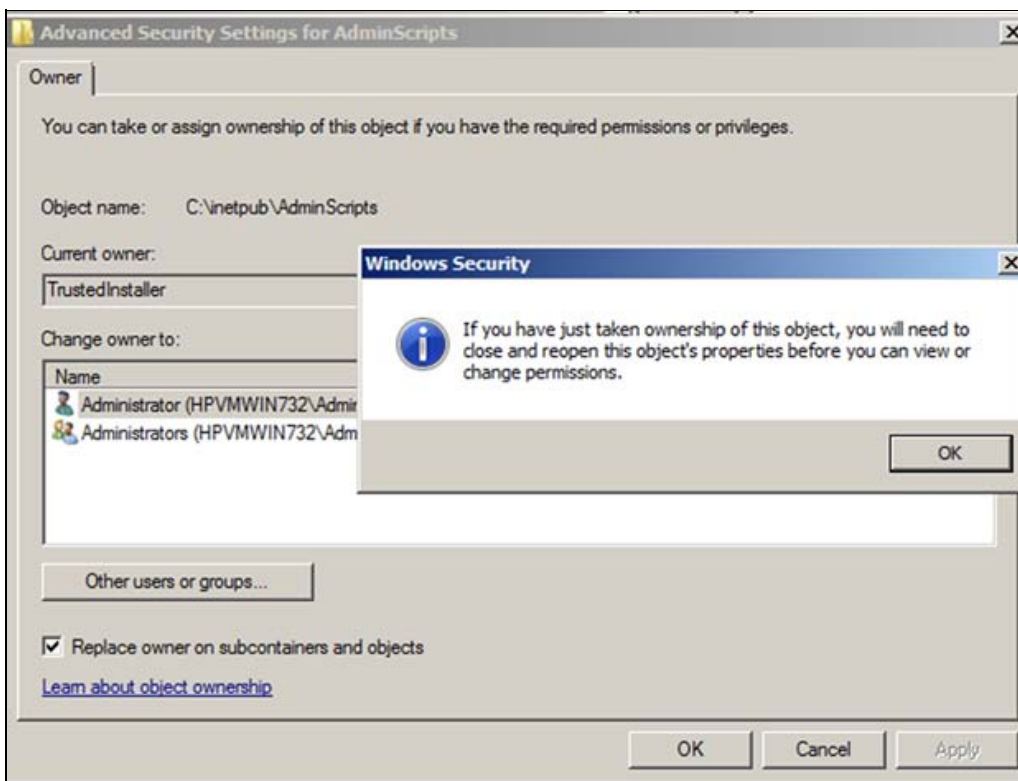
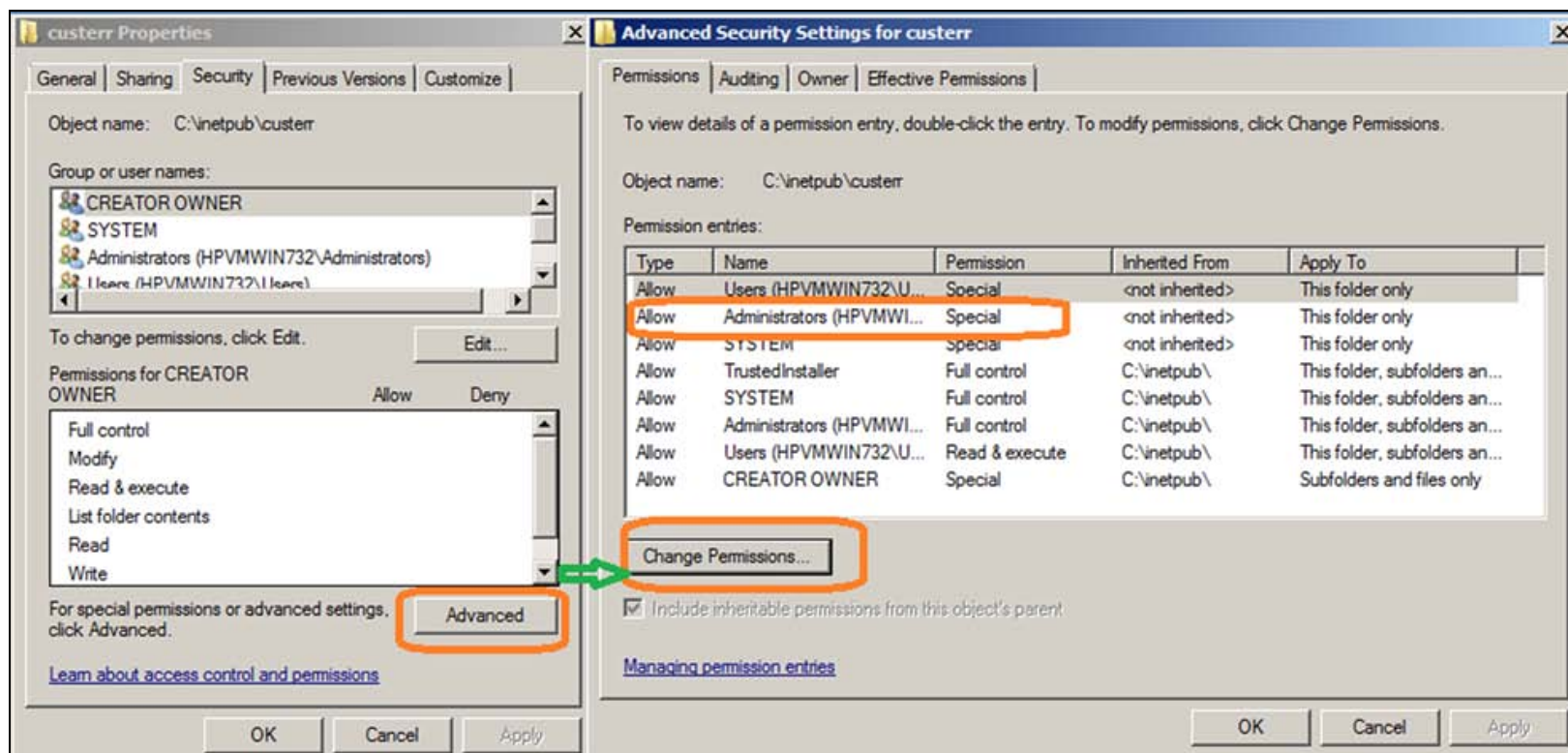


FIGURE 6: APPLY THE NEW OWNERSHIP TO THE INETPUB DIRECTORY

7. Click **OK**, then **OK**.

You might also have to change the Default permission for the current user:

1. Right-click on the directory that generated the message and click **Properties**.
2. Click the **Security** tab, then click **Advanced**.
3. Click the **Permissions** tab and then **Change Permissions** (Figure 7 below):

**FIGURE 7: CHANGE THE PERMISSIONS FOR THE CURRENT USER**

4. Select the current user, then click the **Edit** button.
5. Click the **Full Control** option for the current user. This setting allows the changes to propagate to child objects (Figure 8 below):

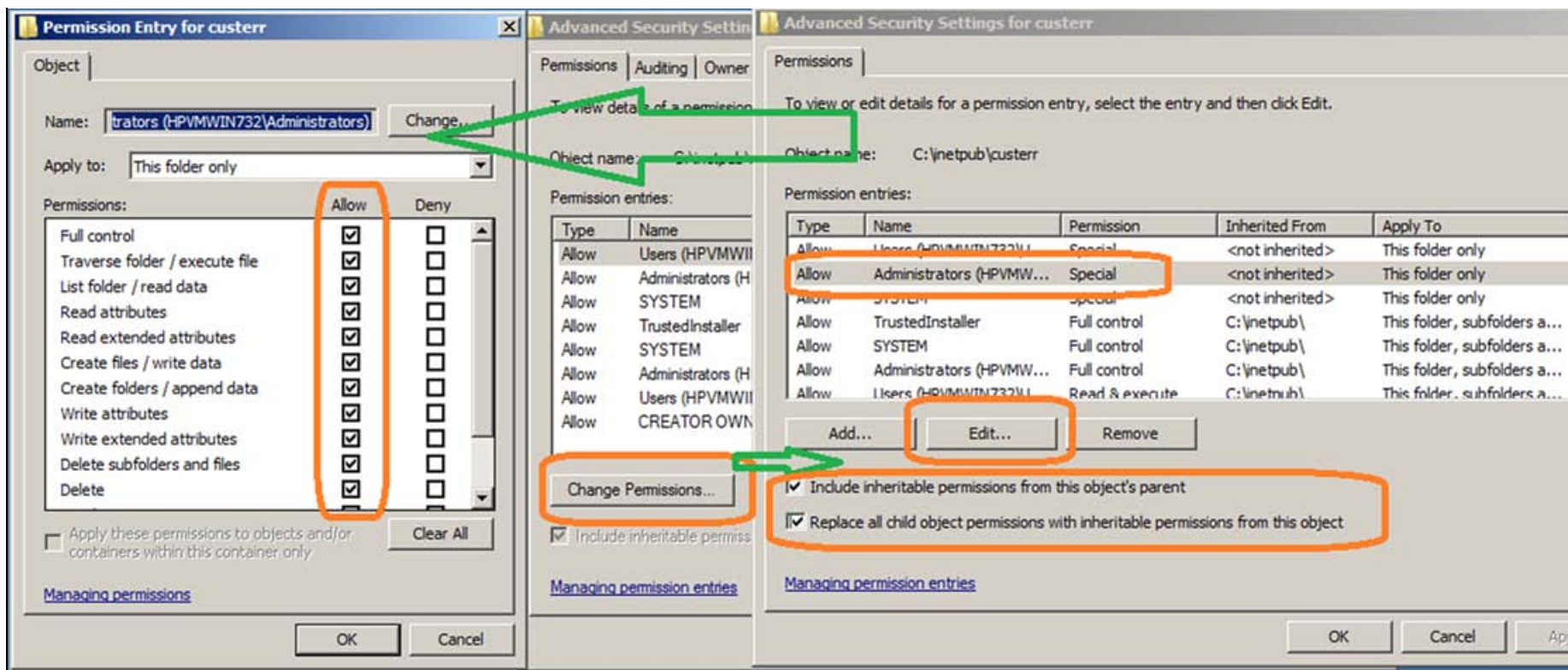


FIGURE 8: CHANGE THE PERMISSIONS FOR THE CURRENT USER

Make sure you can browse the following files before proceeding to the next task.

- <http://localhost/Reports/Pages/Folder.aspx>
- <http://localhost/ReportServer>
- <http://localhost>

Installing WIS 2012

Installing WIS 2012 on an alternate drive is a three-step process.

Begin installing ArchestrA System Platform 2012 by double-clicking the **Setup** file on the DVD root.

Note: The ArchestrA System Platform DVD contains the entire System platform product range. For this *Tech Note* it is assumed that all the Wonderware System Platform products are being installed on the same system, but there are other options available. You can View complete Install Guide by clicking the **View Install Guide** button (Figure 9 below).

1. Click the **ArchestrA System Platform Computer Roles** option and click **Next**.



FIGURE 9: ARCHESTR A SYSTEM PLATFORM COMPUTER ROLES

2. Click the **All-in-one Node** option and click **Next**.



FIGURE 10: ALL-IN-ONE NODE OPTION

3. Notice **C:\Program Files** installation location is selected by Default. Check the **Customize Installation** option and then click **Next** (Figure 11 below).

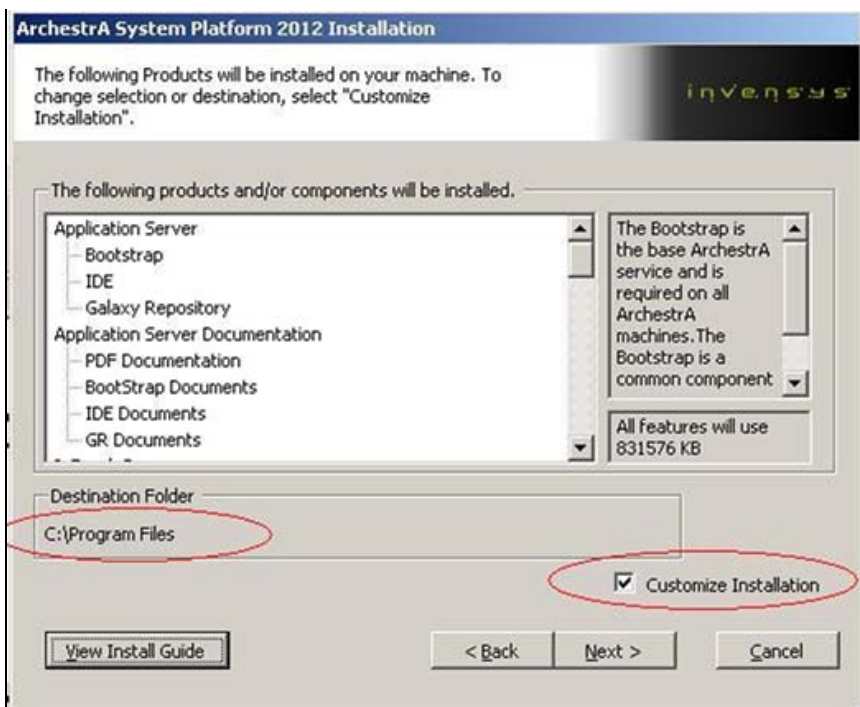


FIGURE 11: CUSTOMIZE INSTALLATION

4. Click **Browse** and change the Destination Folder to your location. In this example it is **E:\Program Files**. You might have to create the destination directory manually.

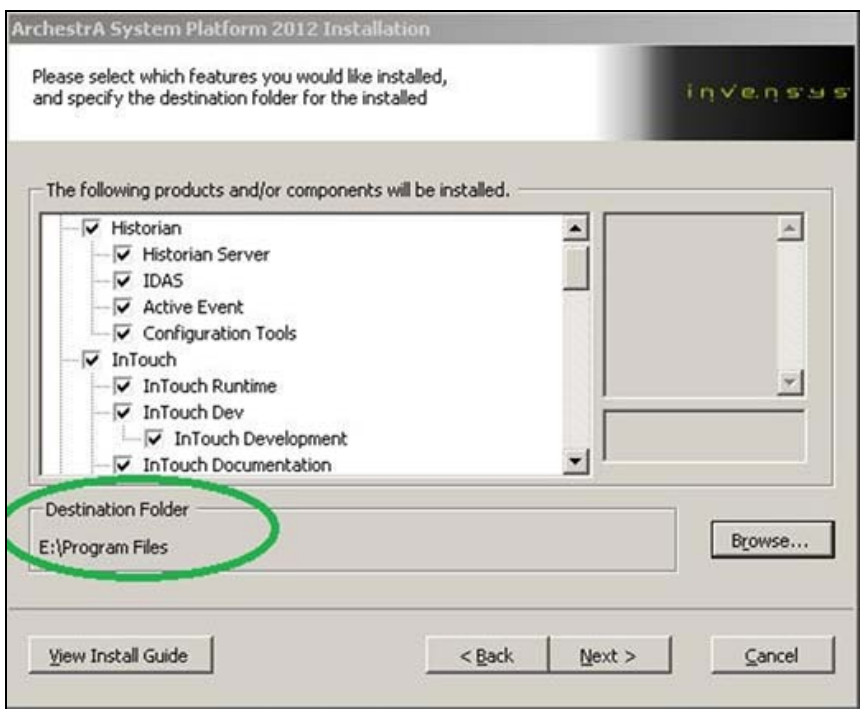


FIGURE 12: PROVIDE ALTERNATE DESTINATION DIRECTORY

5. Click **Next**.
6. Follow the **Installation** Wizard to the end and click **Configure**.

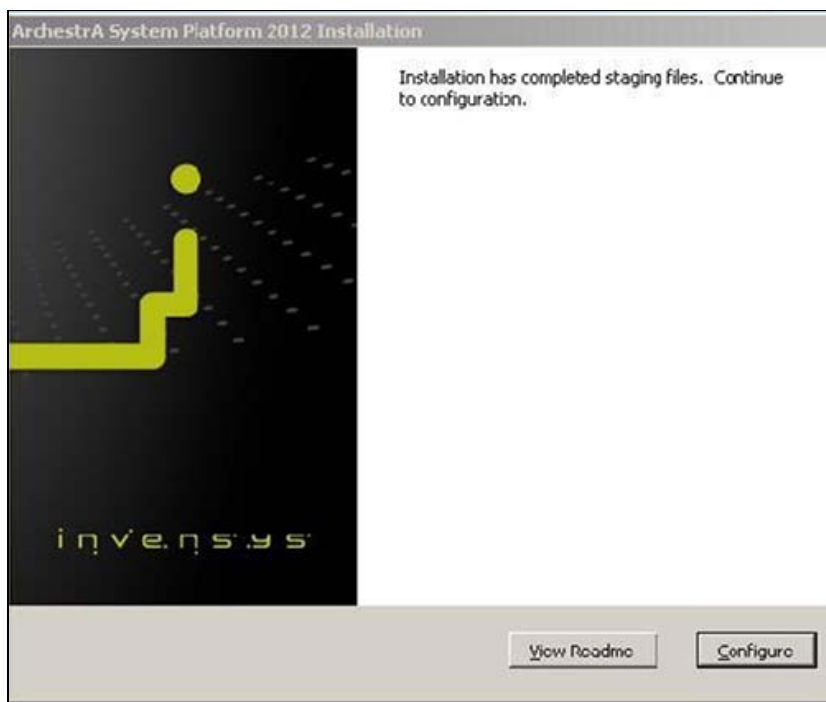


FIGURE 13: COMPLETE THE INSTALLATION

7. Click **Reboot Now** to reboot the computer. Reboot in order to install the ActiveFactory Language Packs. If you don't reboot now you cannot use the language packs later.



FIGURE 14: REBOOT TO COMPLETE THE INSTALLATION

8. Ensure Active Factory Language Packs are installed by opening **Start > Control Panel > Add/Remove Programs**.

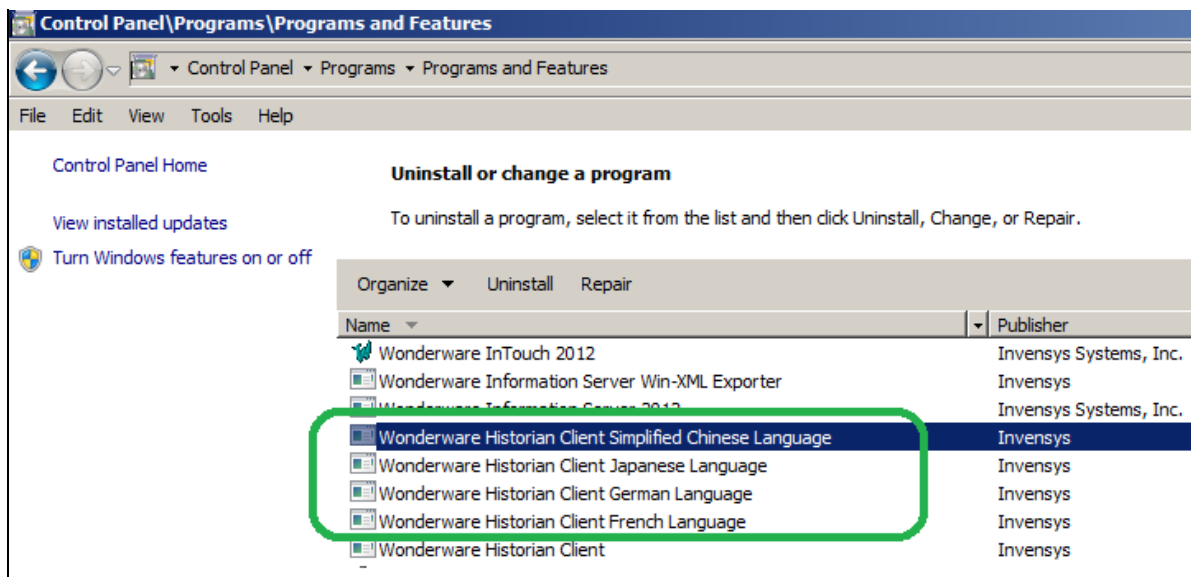


FIGURE 15: LANGUAGE PACKS IN CONTROL PANEL

9. Open Configurator by clicking **Start > Wonderware > Common > Configurator**. You can customize the following items.
 - For Historian Server you can designate the Database/data paths.

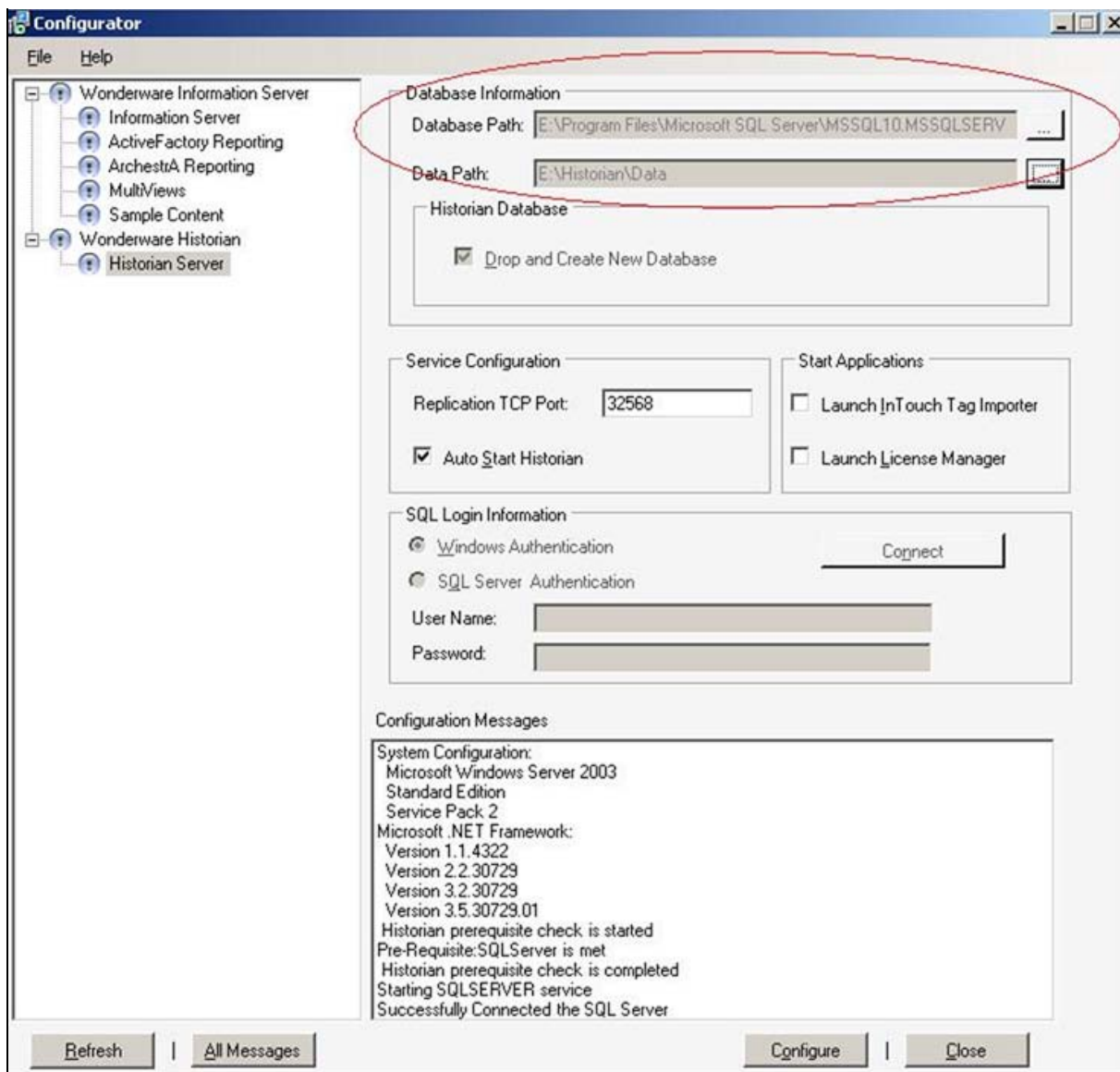


FIGURE 16: CONFIGURATOR OPTIONS: HISTORIAN DATA PATHS

- For Information Server you can designate the Virtual Folder Name.

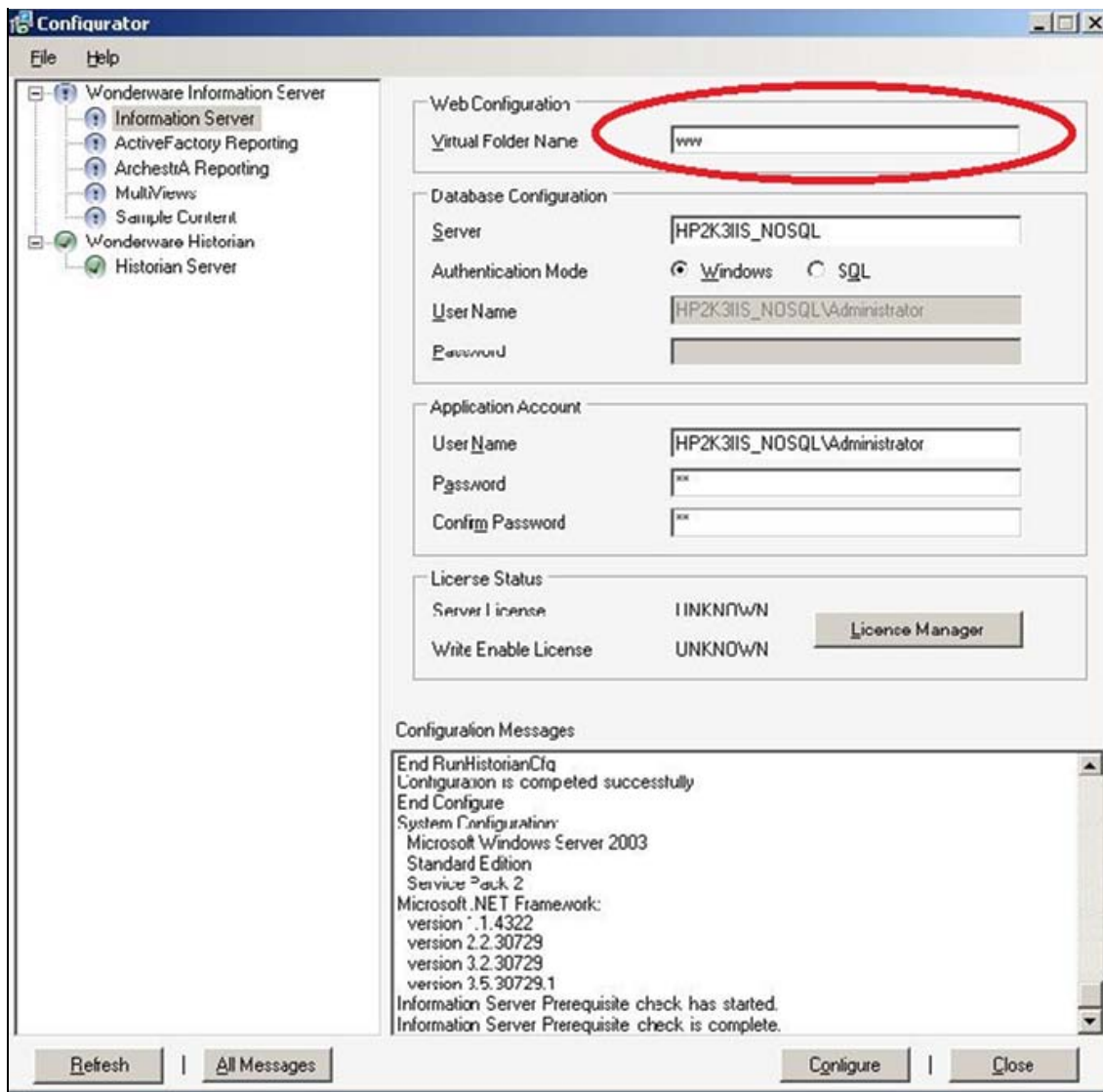


FIGURE 17: VIRTUAL FOLDER NAME FOR INFORMATION SERVER

- For ActiveFactory Reporting you can designate the Virtual Folder Name.

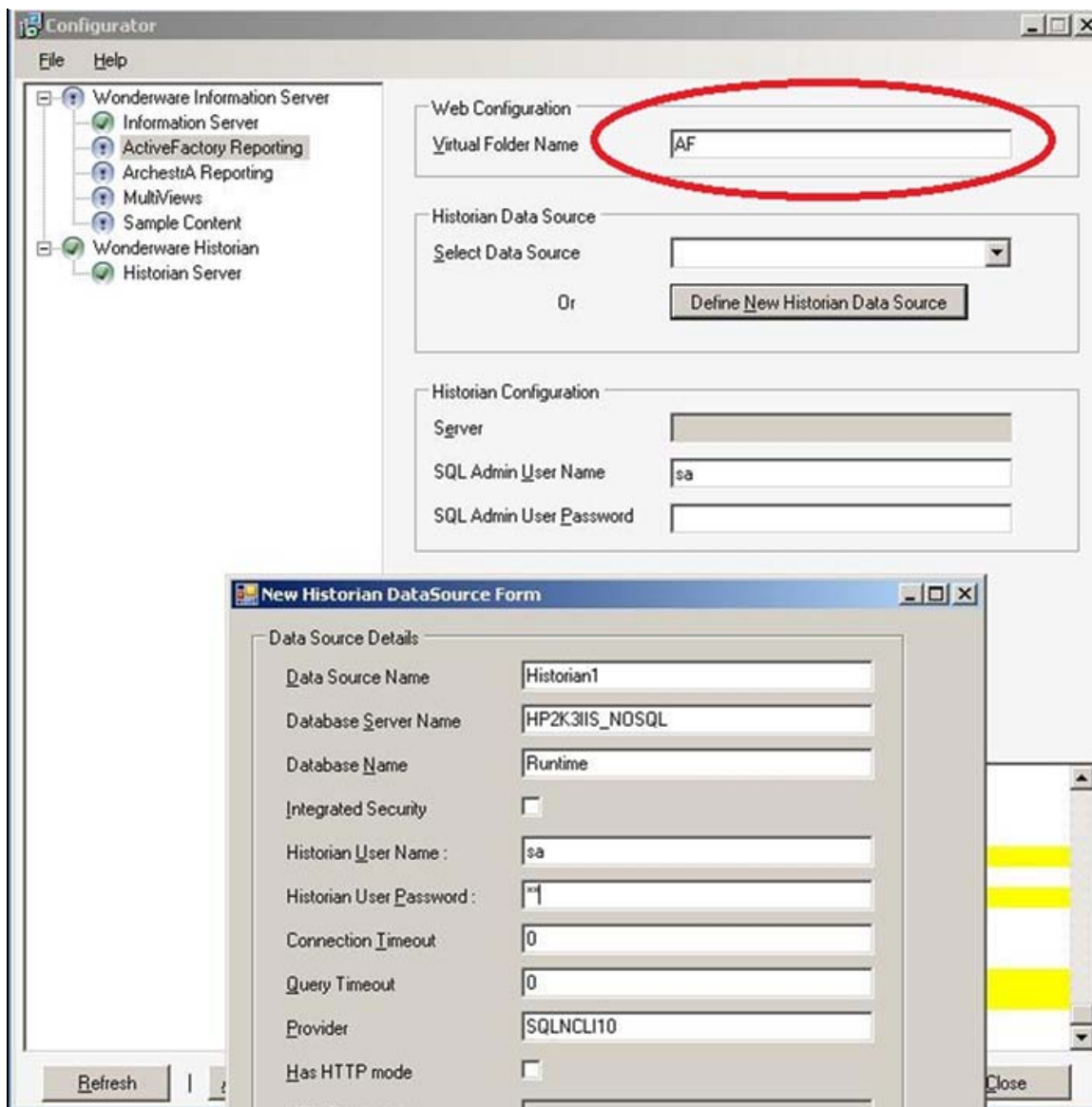


FIGURE 18: ACTIVEFACTORY REPORTING WEBSITE VIRTUAL FOLDER NAME AND SECURITY

Known Issues

This section provides a list of Known Issues and their workarounds.

Information Server-Related Services Are Not installed Due to Nested Directory Chosen for Inetpub

If you are using a nested Directory for your Inetpub directory like **E:\pub\inetpub** Configurator fails to install the WIS-related Services.

You will see the following error in the Configurator when setting up the Information Server portion (Figure 19 below):

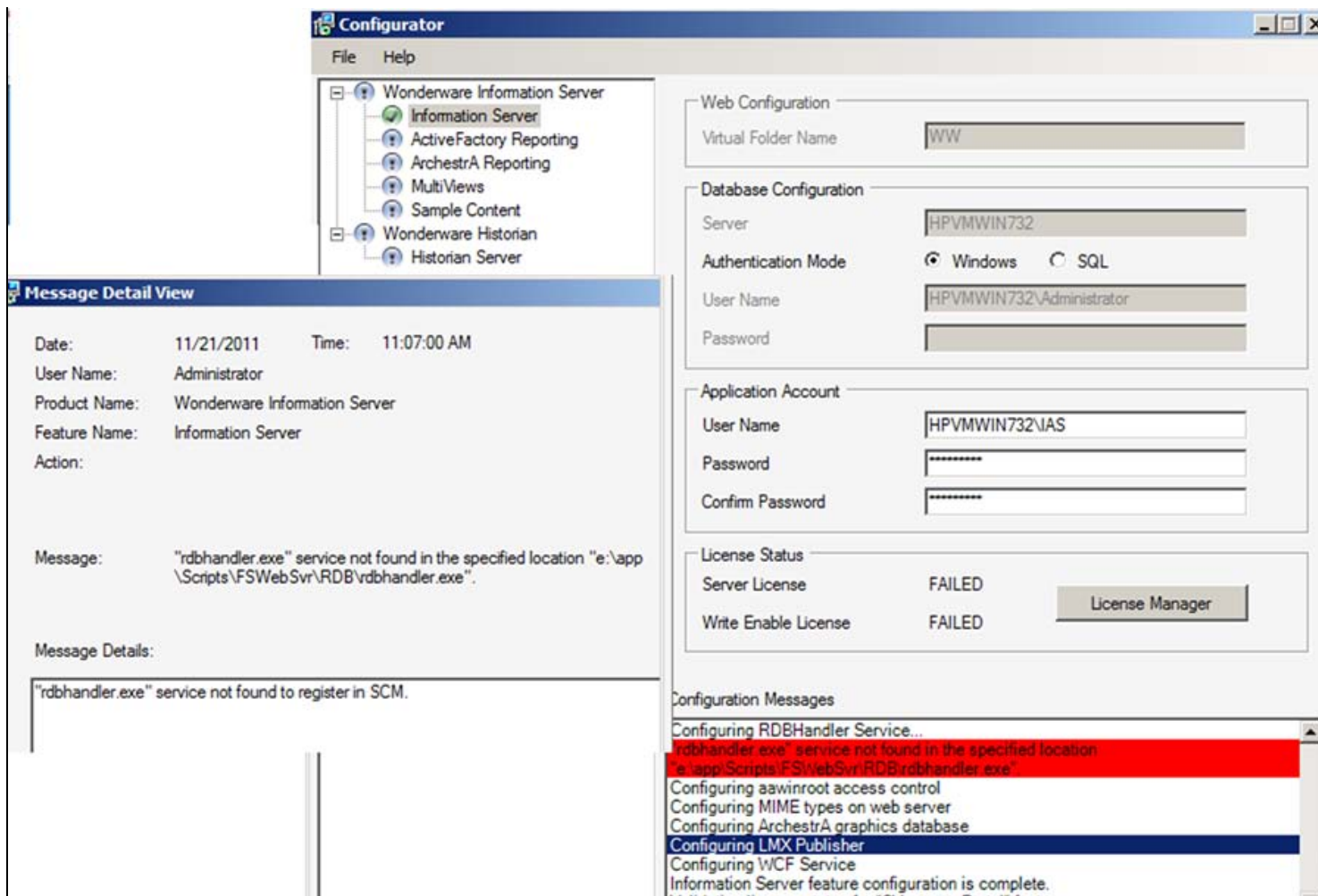


FIGURE 19: FILE NOT FOUND IN NESTED HIERARCHY

In this case the Information Server services fail to install due to a bug in Configurator, which is planned for fixing in the next major release of Wonderware Information Server.

The Workaround is to use the **Move_IIS_Final.exe** Utility to manually install the Services.

1. Click **Actions/Install WIS Services**.

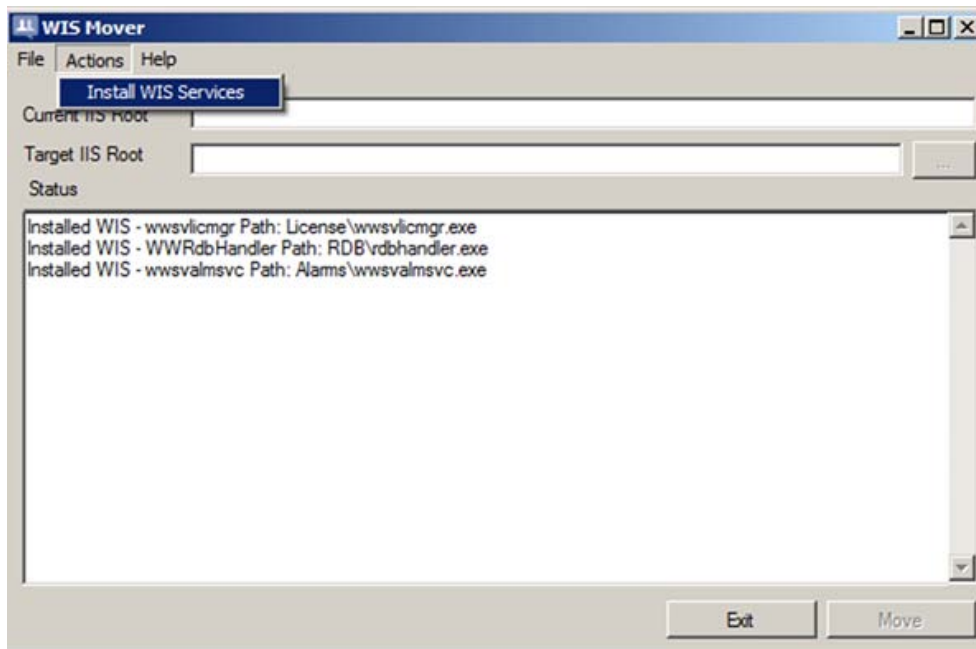


FIGURE 20: MOVE_IIS UTILITY ACTION MENU

2. Verify the Information Server-related Services are properly installed and started (Figure 21 below).

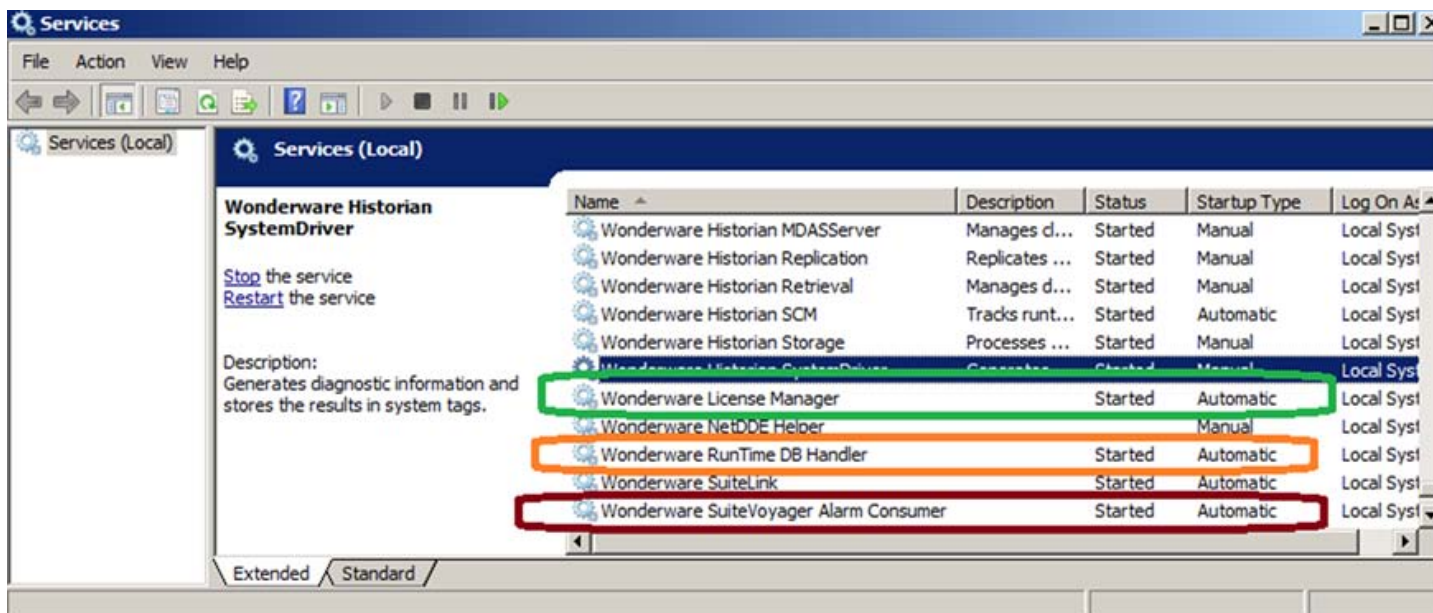


FIGURE 21: INFORMATION SERVER-RELATED SERVICES

K Nourbakhsh and E. Xu

Tech Notes are published occasionally by Wonderware Technical Support. Publisher: Invensys Systems, Inc., 26561 Rancho Parkway South, Lake Forest, CA 92630. There is also technical information on our software products at [Wonderware Technical Support](http://www.wonderware.com/TechnicalSupport).

For technical support questions, send an e-mail to wwsupport@invensys.com.

 [Back to top](#)

©2012 Invensys Systems, Inc. All rights reserved. No part of the material protected by this copyright may be reproduced or utilized in any form or by any means, electronic or mechanical, including photocopying, recording, broadcasting, or by any information storage and retrieval system, without permission in writing from Invensys Systems, Inc. [Terms of Use](#).