

Tech Note 801

Migrating Your Custom MES Scripts

All Tech Notes, Tech Alerts and KBCD documents and software are provided "as is" without warranty of any kind. See the [Terms of Use](#) for more information.

Topic#: 002586

Created: September 2011

Introduction

This *Tech Note* explains migrating your custom database scripts in the case where you upgrade your application. If your files have any customization, you need to back up those files so they do not get overwritten.

The process of dumping the files creates a directory and populates it with scripts for the version that existed *before* the scripts were customized. After the upgrade is complete you can replace them.

You can modify and re-execute this information using the **FactDBCfg** utility. However, when you have changed the scripts, your changes must be re-done on the *new* database scripts generated from the Patch or Service Pack upgrade. You do this *before* migrating the database.

Note: Refer to Chapter 3 (page 46) of the [Wonderware® MES Installation Guide](#) for more information about how to dump the files and how they are used to create the database. If you have not customized the scripts in your existing application, use the latest scripts from the Hot Fix or Patch Upgrade.

Application Versions

- Factelligence 3.0 (all versions)
- Operations and Performance 3.5 (all versions)
- Wonderware MES 4.0 (all versions)

Symptoms

If you try and upgrade from the existing installation you see the following errors because the files are already in the following locations.

- Open Windows Explorer. When the scripts are dumped to disk using the Database Configuration utility, the following folders are created and the scripts are put in them.
 - **For Factelligence 3.4:** C:\Program files\Wonderware\Factelligence\Database\ProdDBResources
 - **For Operations & Performance 3.5:** C:\Program files\Wonderware\Factelligence\Database\FactDBResources
 - **For MES 4.0:** C:\Program files\Wonderware\MES\Database\FactDBResources
- **For Factelligence 3.4:** You will not see any errors and the Database Configuration utility starts as expected. However, when it

locates the **ProdDBResources** folder and sees that it is already been created, the application exits quickly. This behavior is as designed.

- **For Operations & Performance 3.5:** You see a popup when upgrading from 3.5 to 3.5 SP2 (Figure 1 below).

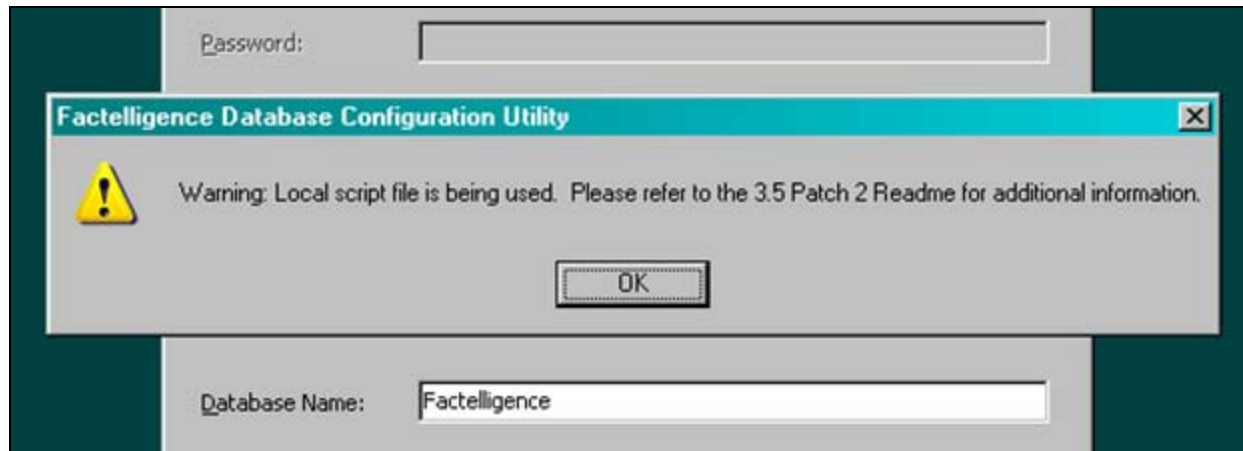


FIGURE 1: LOCAL SCRIPT FILE IS BEING USED

- **For MES 4.0:** You see a popup: **Warning: Local script file is being used** (Figure 2 below).

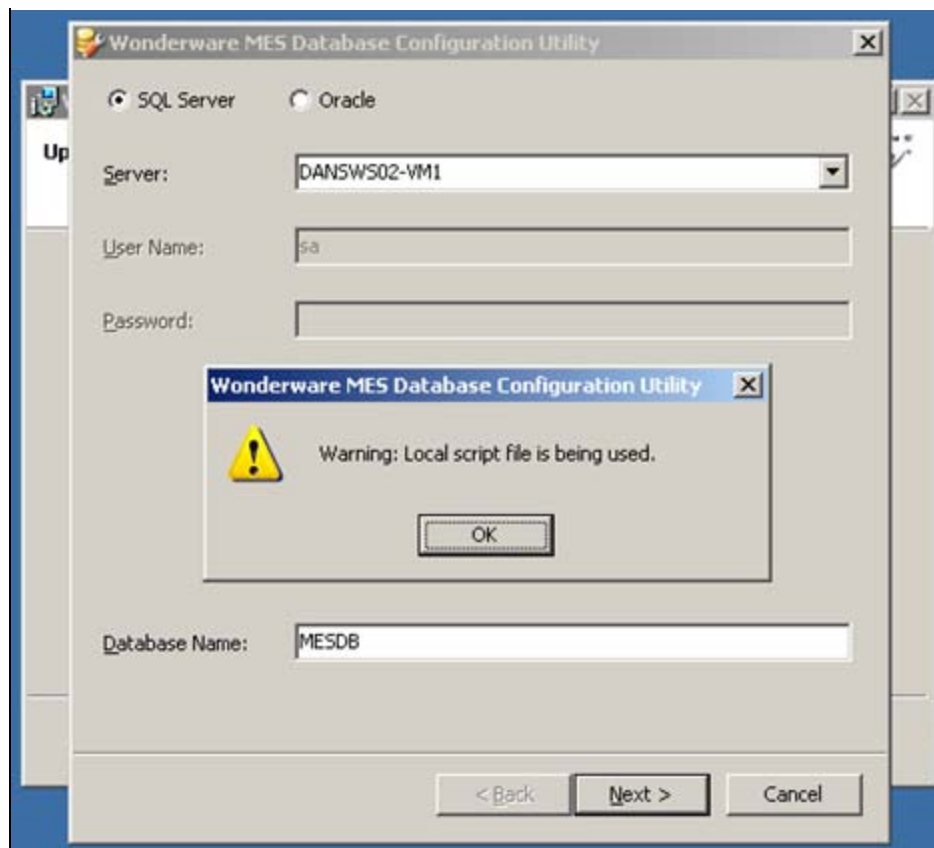


FIGURE 2: FILE BEING USED

If the database is *not* the correct version for that is installed, you will see an error in the MES Database Connection Editor when configuring and testing the Middleware connection: **Middleware and Database are incompatible versions.**

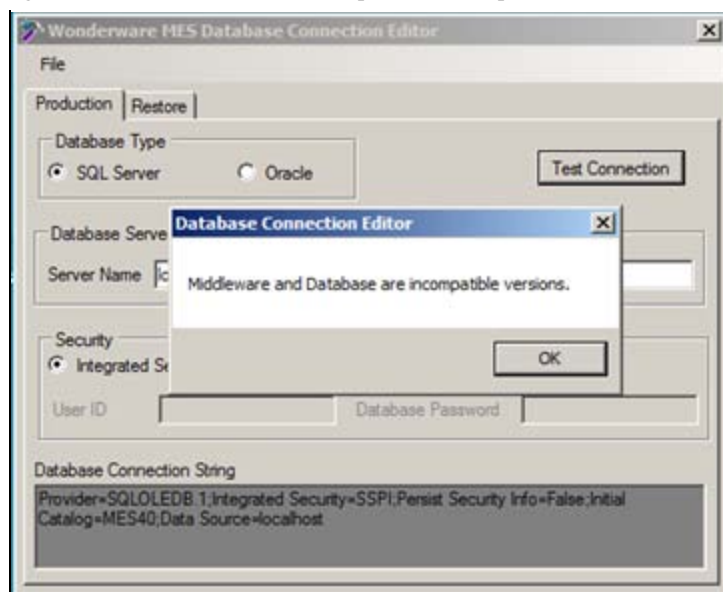


FIGURE 3: INCOMPATIBLE VERSION

If no database is configured the Middleware will not start.

Resolution

You need to either rename or delete the following directories (in bold) so your migration can proceed.

Procedure

1. Save the existing scripts to another location.
2. Rename/delete the folders so that the local scripts are not used if dumped from a previous install or version.
3. In the Database Configuration Utility, click the **Dump Database Scripts to Disk** option. The folders and new scripts are created.
4. Open any of the scripts and make your changes before you migrate the application.
5. Run the Database Configuration Utility again. The updated scripts are dumped to the following locations.
 - For **Factelligence 3.4**: C:\Program files\Wonderware\Factelligence\Database**ProdDBResources**
 - For **Operations & Performance 3.5**: C:\Program files\Wonderware\Factelligence\Database**FactDBResources**
 - For **MES 4.0**: C:\Program files\Wonderware\MES\Database**FactDBResources**

Use the dumped scripts (the ones with your changes) to create the new database and ensure the database is compatible.

References

- [Tech Note 802 Migration Issue: Operations & Performance to Wonderware MES](#)

J. Godfrey

Tech Notes are published occasionally by Wonderware Technical Support. Publisher: Invensys Systems, Inc., 26561 Rancho Parkway South, Lake Forest, CA 92630. There is also technical information on our software products at [Wonderware Technical Support](#).

For technical support questions, send an e-mail to wwwsupport@invensys.com.

 [Back to top](#)

©2011 Invensys Systems, Inc. All rights reserved. No part of the material protected by this copyright may be reproduced or utilized in any form or by any means, electronic or mechanical, including photocopying, recording, broadcasting, or by any information storage and retrieval system, without permission in writing from Invensys Systems, Inc. [Terms of Use](#).