

[Tech Note 802](#)

Migration Issue: Operations & Performance-to-Wonderware MES

All Tech Notes, Tech Alerts and KBCD documents and software are provided "as is" without warranty of any kind. See the [Terms of Use](#) for more information.

Topic#: 002587

Created: October 2011

Introduction

A migration issue has been found when trying to upgrade from 3.5 Hot Fix HF 2079 CR 106392 or 3.5 Patch 01. The following procedure needs to implement as a workaround due to changes in the 4.0 database schema for the migration to be successful.

Application Versions

- Operations & Performance 3.5 (HF 2079) and 3.5 P01
- MES 4.0 and 4.0 SP1

Summary

When upgrading from 3.5 Hot Fix 2079 or 3.5 Patch 01 to MES 4.0 or 4.0 SP1 you get the following the error.

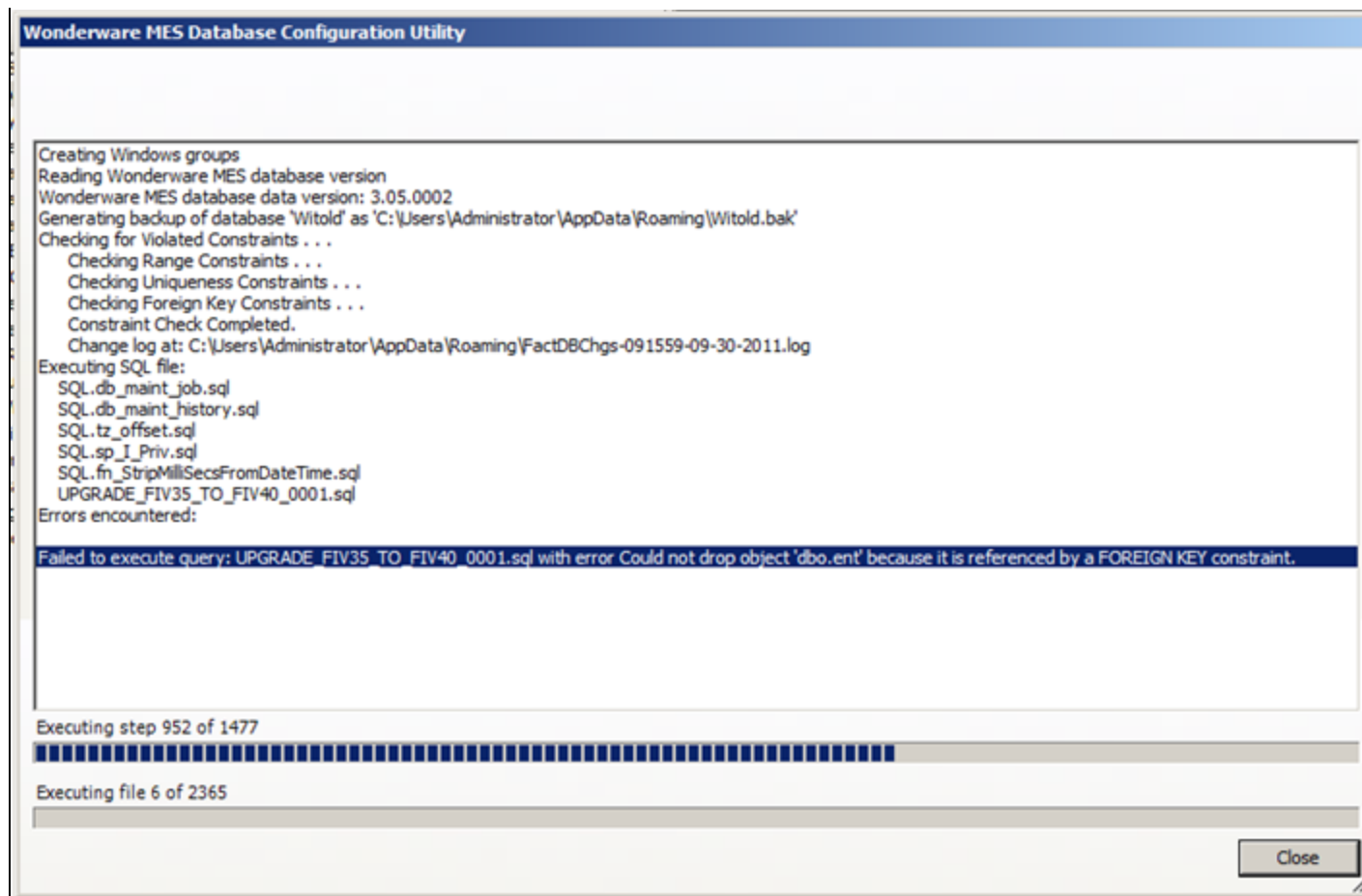


FIGURE 1: MIGRATION ERROR

Workaround

1. Open the MES Database configuration Utility and select the option **Dump scripts to disk**.



FIGURE 2: DUMP SCRIPTS TO DISK

2. After dumping the scripts the script to disk a folder is created called **FactDbResources**. The location is **<Installation Path>Wonderware\MES\Database\FactDbResources**.
3. In the folder locate the script **upgrade_fiv35_to_fiv40_0001.sql** and double-click it for editing.

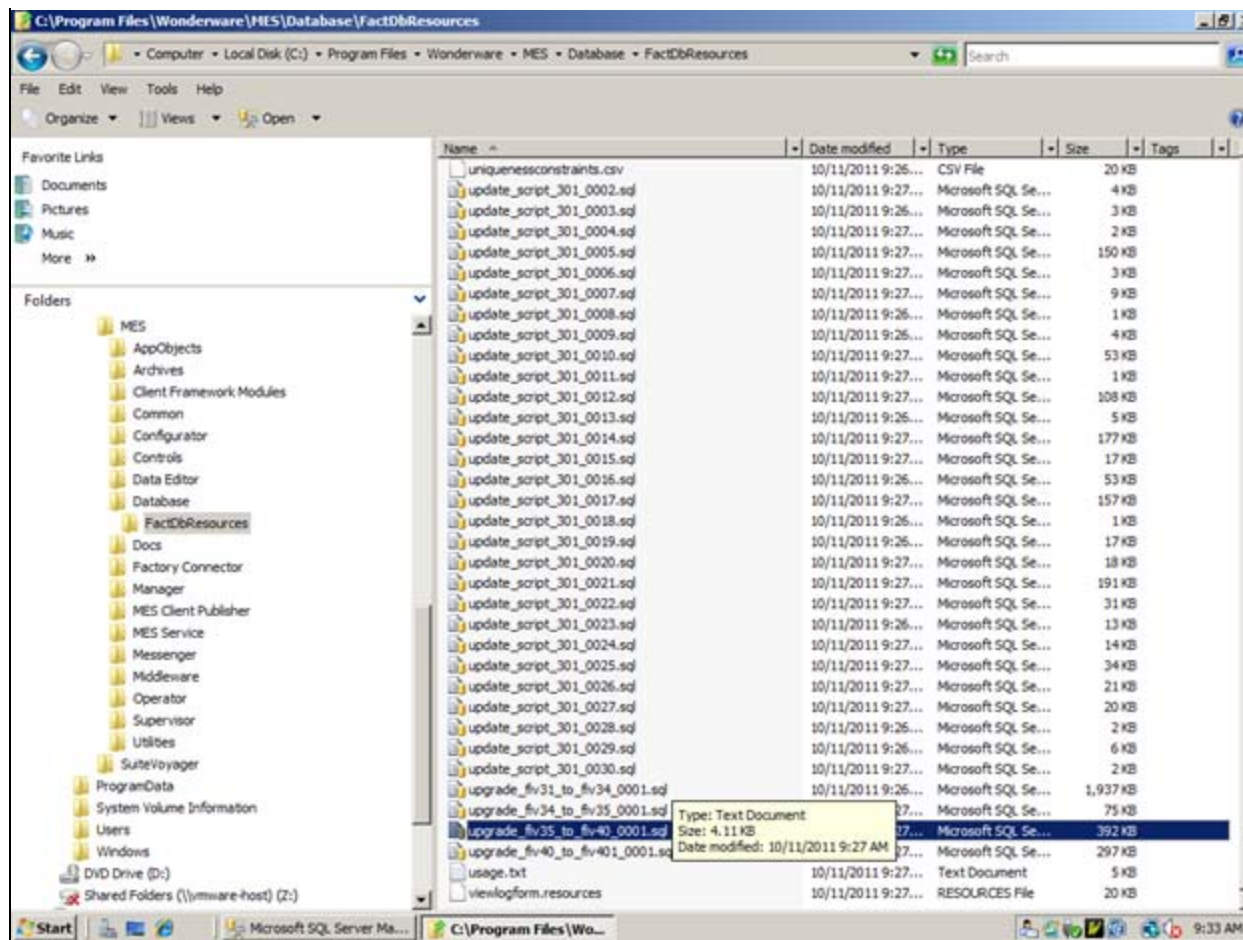


FIGURE 3: UPGRADE_FIV35_TO_FIV40_001.SQL

4. Add the following script under the **DROP ALL FOREIGN KEY CONSTRAINTS** section and save your changes.

```
if exists (select * from dbo.sysobjects where id = object_id(N'[dbo].[FK_shift_log_ent]') and OBJECTPROPERTY(id, N'IsForeignKey') = 1)
ALTER TABLE [dbo].[shift_log] DROP CONSTRAINT FK_shift_log_ent
GO
```

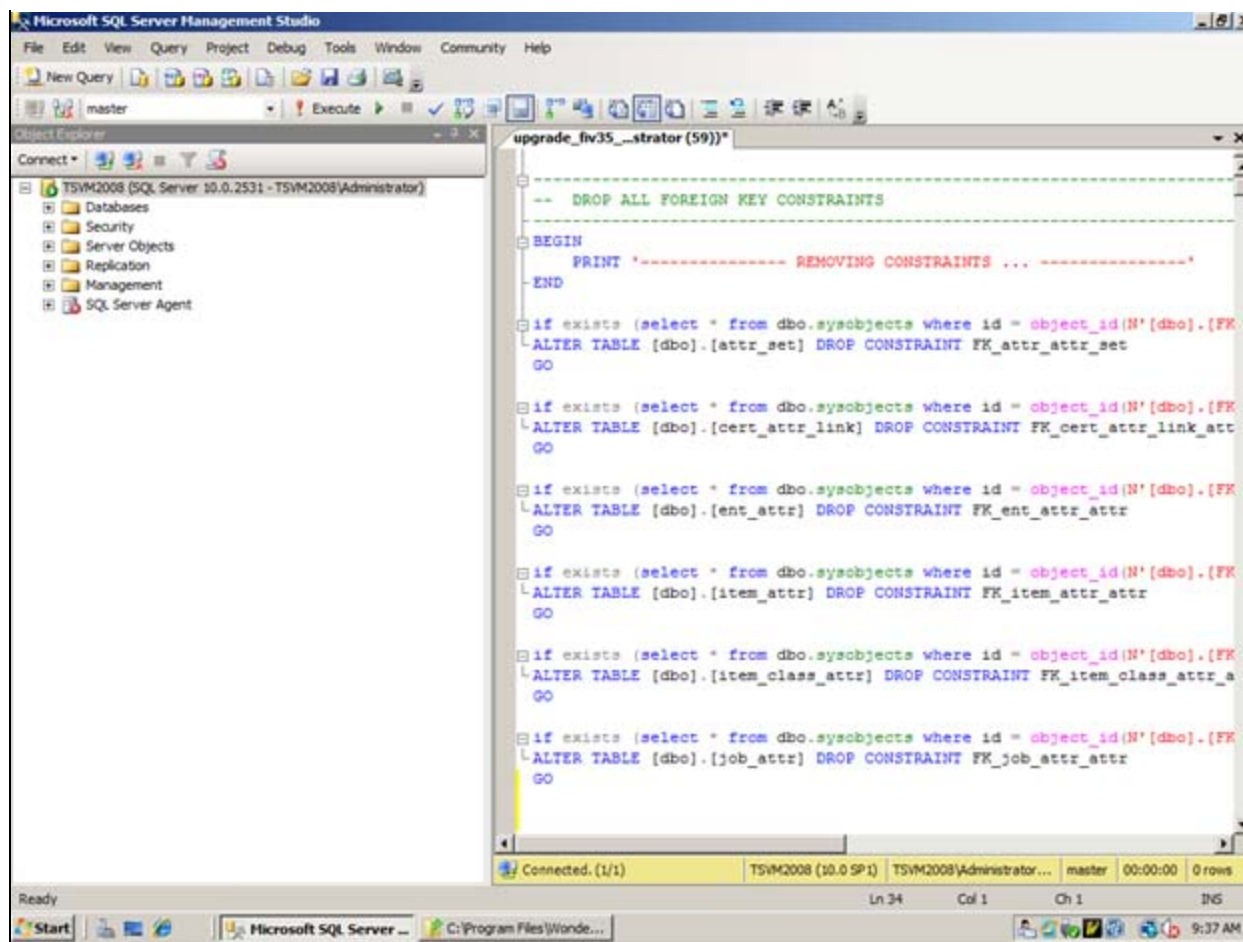


FIGURE 4: ADD SCRIPT TO DROP ALL FOREIGN KEY CONSTRAINTS SECTION

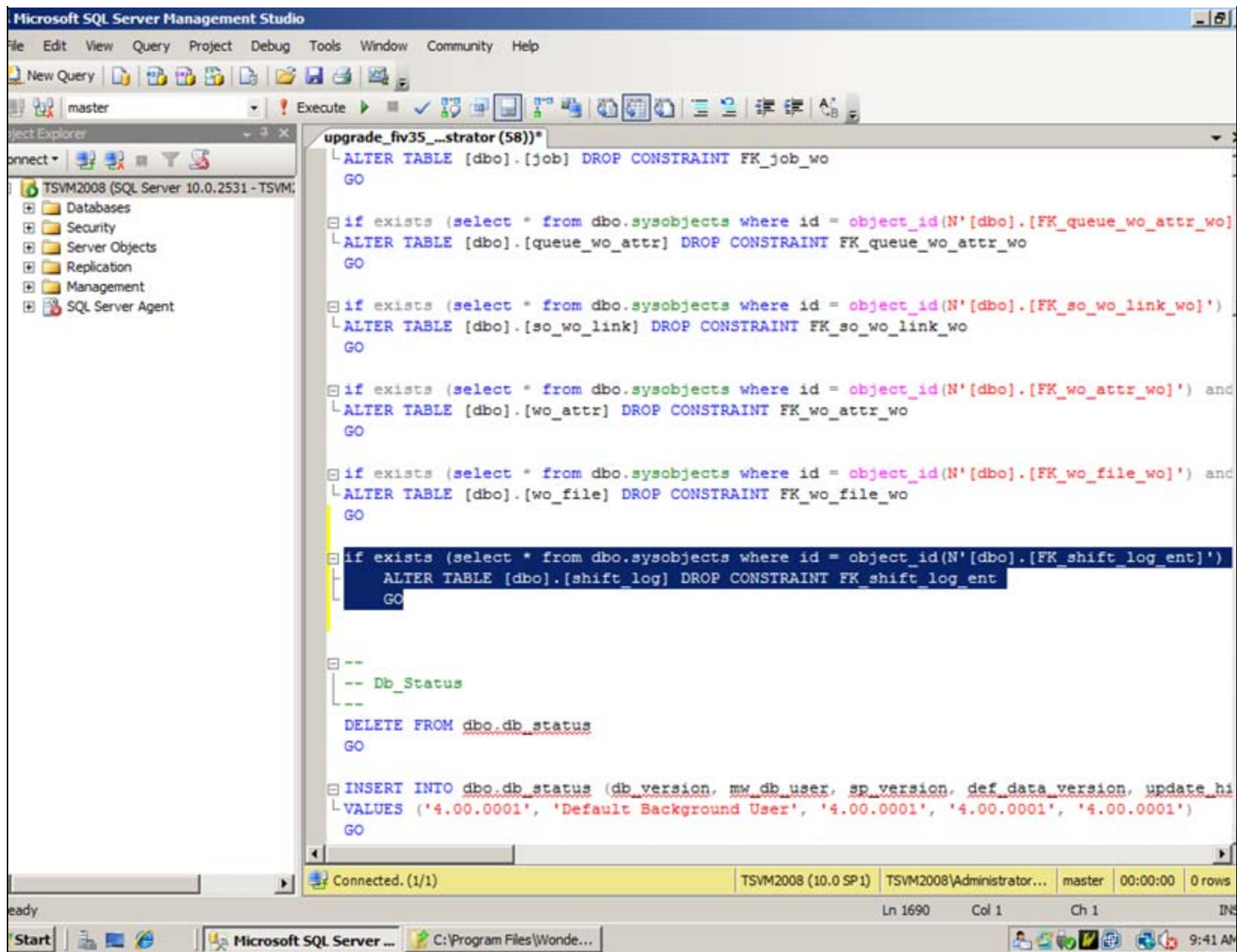


FIGURE 5: ADDED SCRIPT

5. Rerun the MES Database Configuration Utility (MESDBCfg) and click the **Create or Migrate database** option.

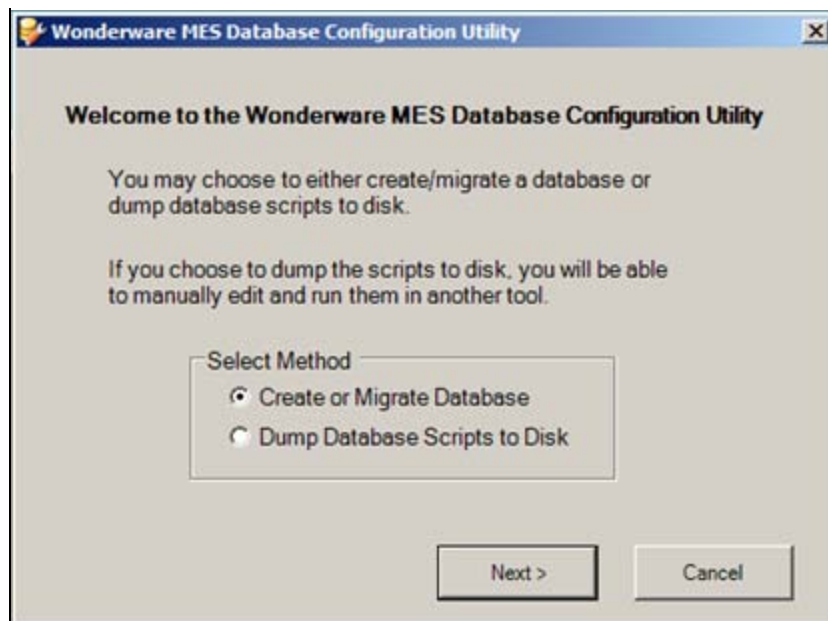


FIGURE 6: CREATE OR MIGRATE DATABASE

6. Re-run the MESDBCfg utility to migrate the database using the scripts on disk when prompted.

You will see the database migration was successful.

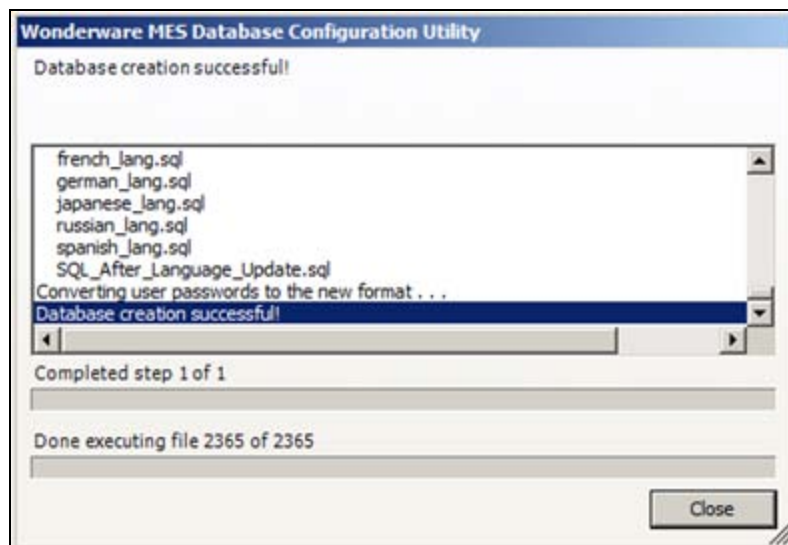


FIGURE 7: DATABASE CREATION SUCCESSFUL

7. When you migrate the database successfully, rename the folder containing the scripts that were dumped to disk.

For example rename it from **<Installation Path>Wonderware\MES\Database\FactDbResources** to **<Installation Path>Wonderware\MES\Database\FactDbResources-MES4_0_SP1_Migration**. By renaming these, they will not be used

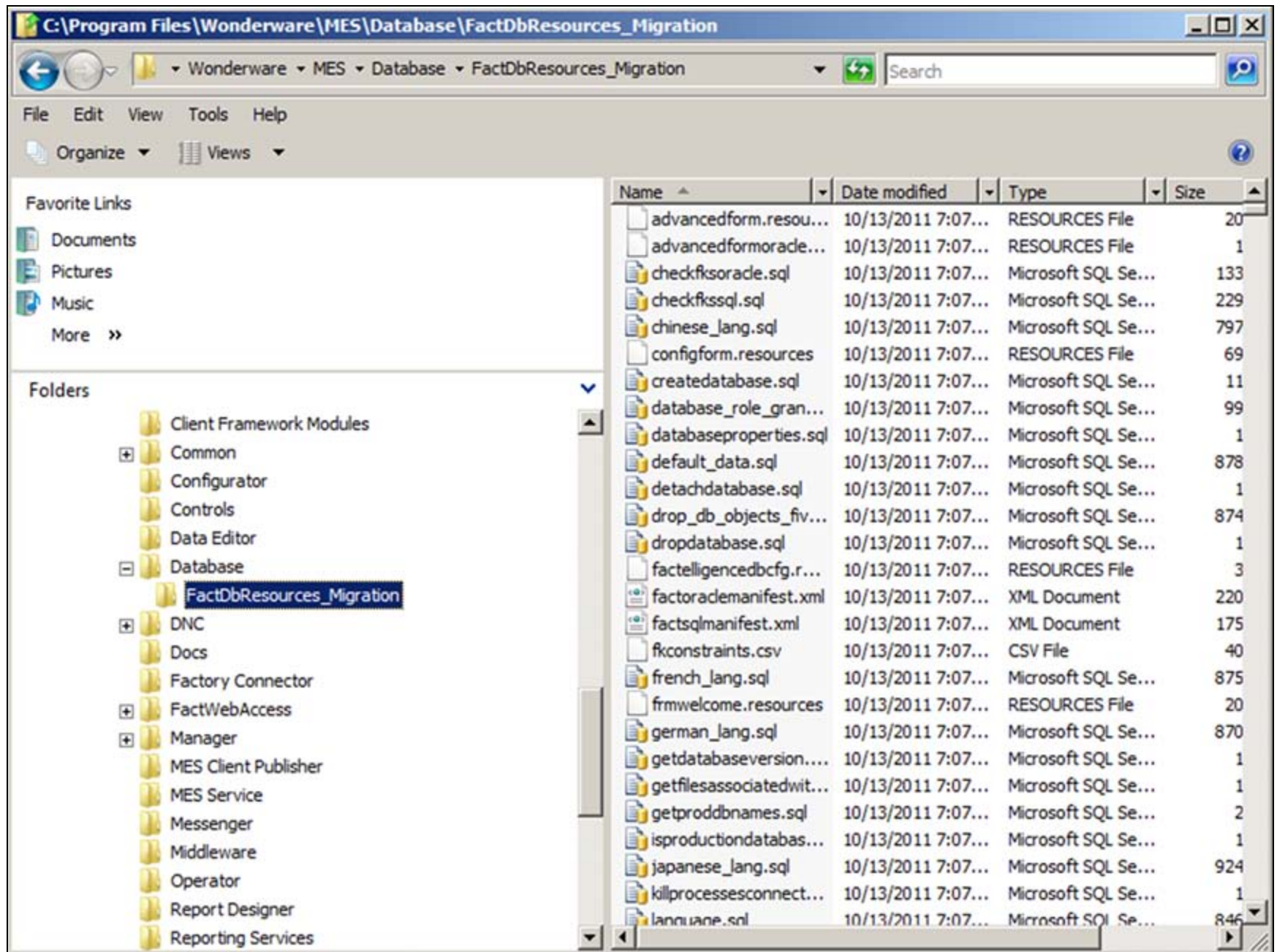


FIGURE 8: RENAMED SCRIPTS FOLDER

References

Tech Note 801 Migrating Your Custom MES Scripts

J. Godfrey

Tech Notes are published occasionally by Wonderware Technical Support. Publisher: Invensys Systems, Inc., 26561 Rancho Parkway South, Lake Forest, CA 92630. There is also technical information on our software products at [Wonderware Technical Support](#).

For technical support questions, send an e-mail to wwsupport@invensys.com.

 [Back to top](#)

©2011 Invensys Systems, Inc. All rights reserved. No part of the material protected by this copyright may be reproduced or utilized in any form or by any means, electronic or mechanical, including photocopying, recording, broadcasting, or by any information storage and retrieval system, without permission in writing from Invensys Systems, Inc. [Terms of Use](#).