

[Tech Note 809](#)

Historian Client Cannot Connect to Historian Server Using 'wwUser' Login

All Tech Notes, Tech Alerts and KBCD documents and software are provided "as is" without warranty of any kind. See the [Terms of Use](#) for more information.

Topic#: 002596
Created: November 2011

Introduction

To use the Wonderware Historian Client application, you must first connect to a Wonderware Historian Server using a valid user account that has permissions to retrieve data. You can use either your Windows user account (integrated security) or a valid SQL Server user account, depending on how the Wonderware Historian Server is configured.

Use a powerful login such as **sa** in the **Server List Configuration** for the initial Historian Client (Trend or Query) connection to a Historian Server. If the sa-level permission is not used, the Historian Client might not be able to connect to the Historian Server using a login such as **wwUser** or **aaUser** and will encounter an error (Figure 1 below).

Note: This issue does not occur if a powerful login such as **sa** is used the very first time a connection is made.

This *Tech Note* provides detailed procedures for solving this problem.

Application Versions

- Wonderware Historian Client v10.0 or later
- Wonderware Historian Server v10.0 or later
- Microsoft SQL Server 2005 SP3 or later

Assumptions

This *Tech Note* assumes that you are familiar with the following products:

- Historian Server v10.0 or later
- Historian Client v10.0 or later
- Microsoft SQL Server v2005 or v2008

Procedure

When the sa-level permission is not used for the initial connection, you can see the following error:

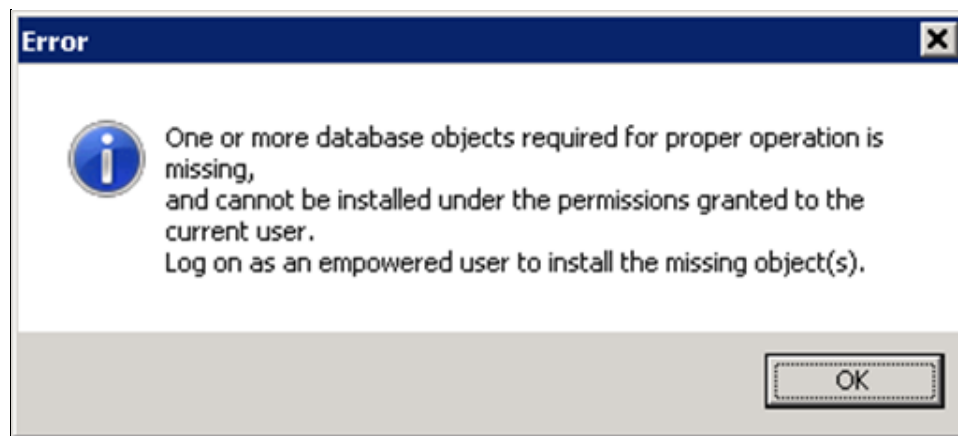


FIGURE 1: ERROR WHEN USING 'wwUSER' OR 'AAUSER' (INITIAL) LOGIN

To check to see if you are using 'wwUser' login.

1. In the Historian Client, click Tools > Servers. The **Server List Configuration** dialog box appears (Figure 2 below). This example shows connecting the client to a Historian **BRIANN6** using the SQL Server **wwUser** login.

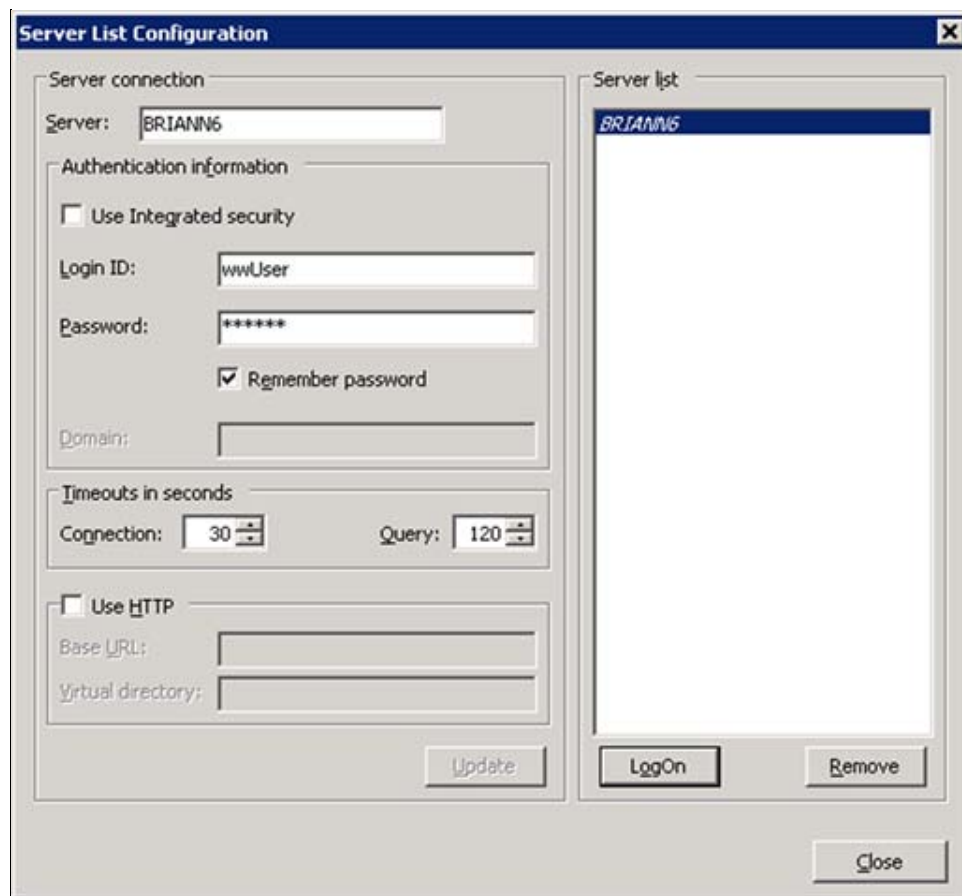


FIGURE 2: SERVER LIST CONFIGURATION

2. Click the **LogOn** button. An error message similar to Figure 1 (above) will appear. Complete the following steps to change the logon.

Solution

To resolve the problem, you need to configure **View definition** properties in two Stored Procedures for both the wwUser and aaUser logins. You can complete the steps using the SQL Server Management Console (below) or **programmatically**.

Using the SQL Server Management Console

1. Open SQL Server Management Studio (Click **Start > All Programs > Microsoft SQL Server 2008** or **SQL Server 2005**).
2. Expand **Databases > Runtime > Programmability > Stored Procedures**. Locate the dbo.aaManualTagInsert Stored Procedure (Figure 3 below).

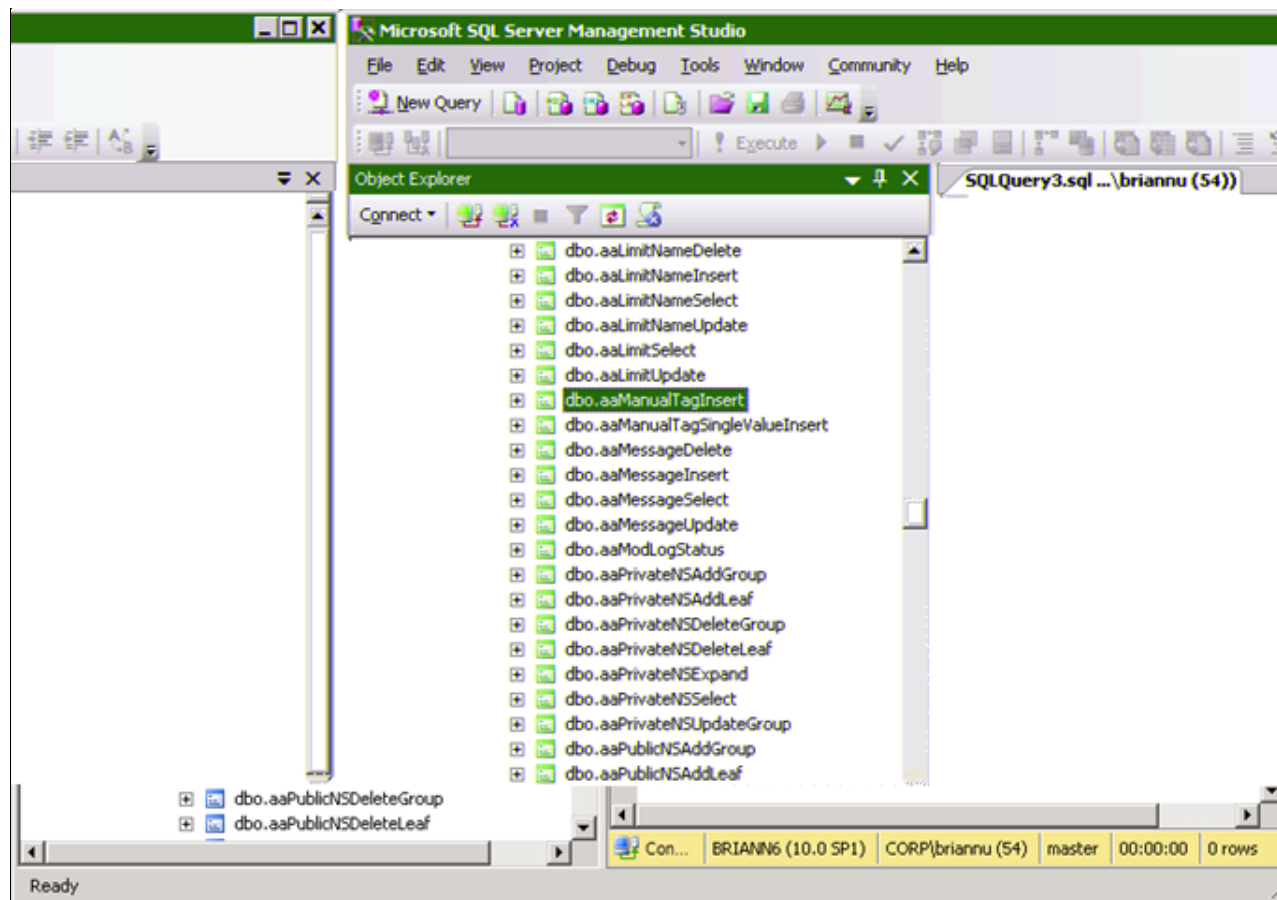


FIGURE 3: DBO.AAMANUALTAGINSERT

3. Right-click **dbo.aaManualTagInsert** and click **Properties**. The **Stored Procedure Properties – aaManualTagInsert** dialog box appears.
4. Click the **Permissions** page (Figure 4 below):

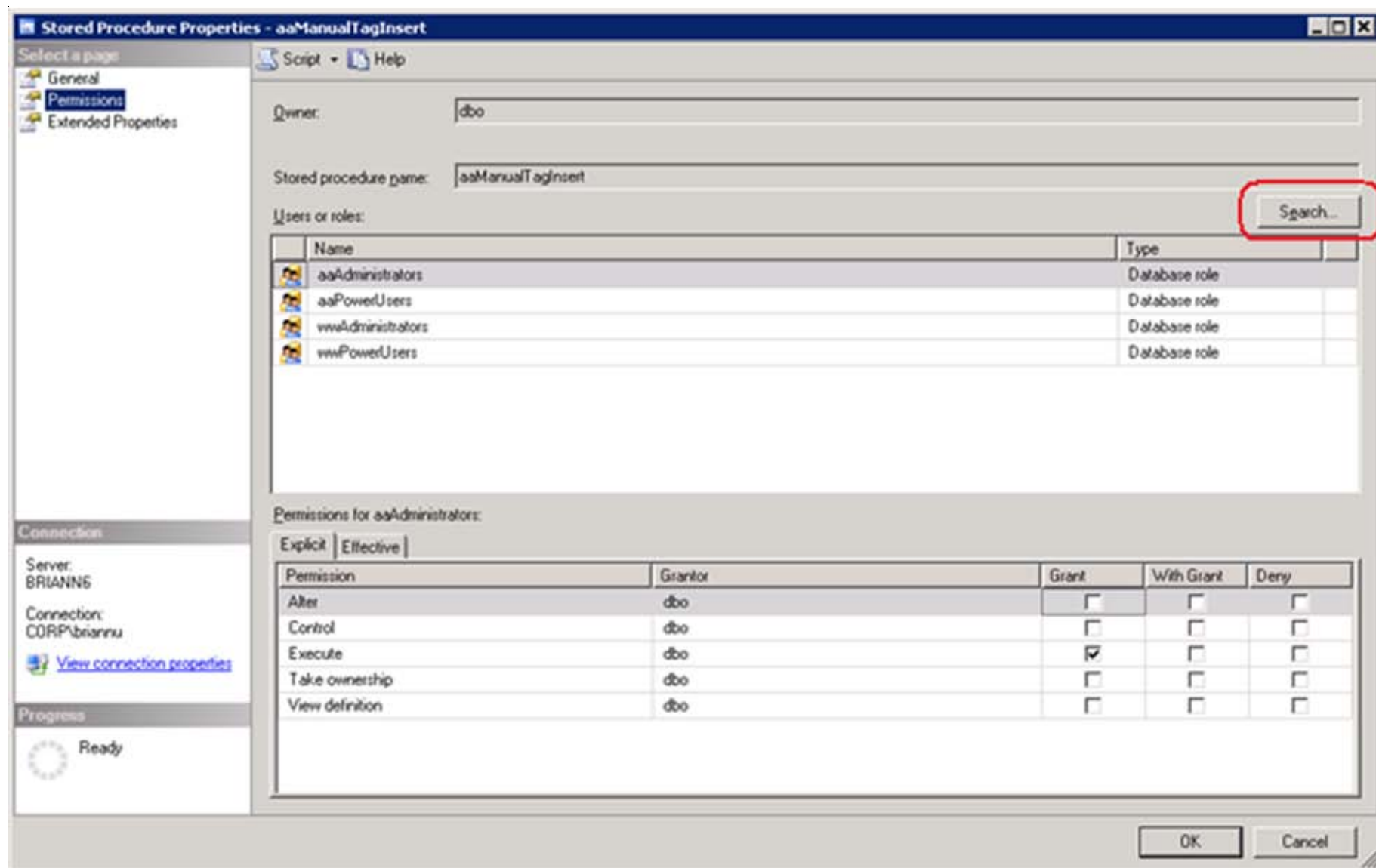


FIGURE 4: STORED PROCEDURE PROPERTIES

The **wwUsers** and **aaUsers** database roles are missing from the name list and should be added.

- To add these roles, click the **Search** button. The **Select Users or Roles** dialog box appears (Figure 5 below).

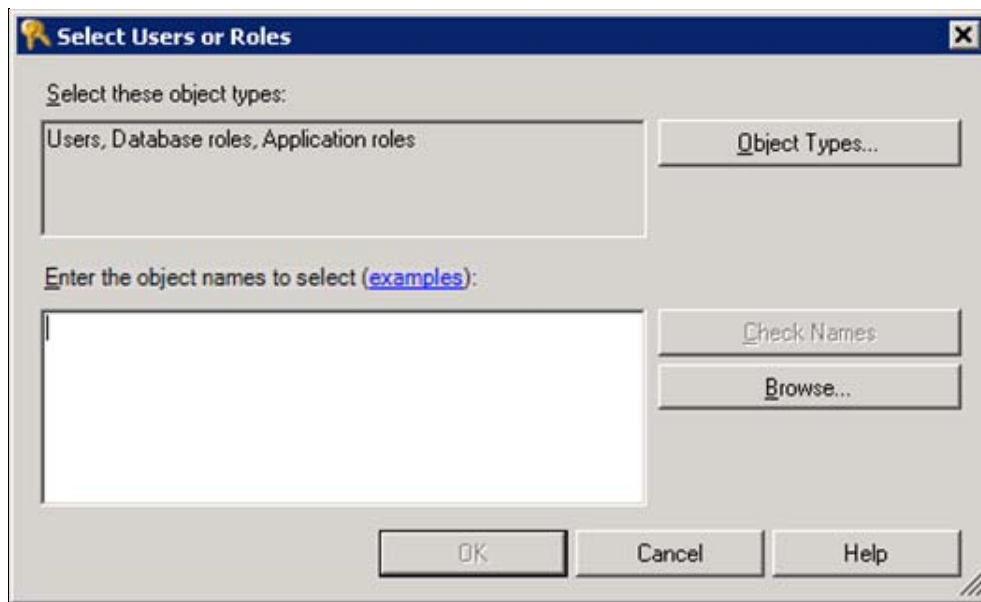


FIGURE 5: SELECT USERS AND ROLES

6. Type **wwUsers** in the **Enter the object names to select (examples):** field.
7. Click **Check Names**. The object name changes to [wwUsers].



FIGURE 6: SELECT USERS OR ROLES [wwUsers]

8. Click **OK**.
9. In the Stored Procedure Properties window, highlight **wwUsers** role.

10. In the **Permissions for wwUsers** panel, highlight **View definition** row and click **Grant**.

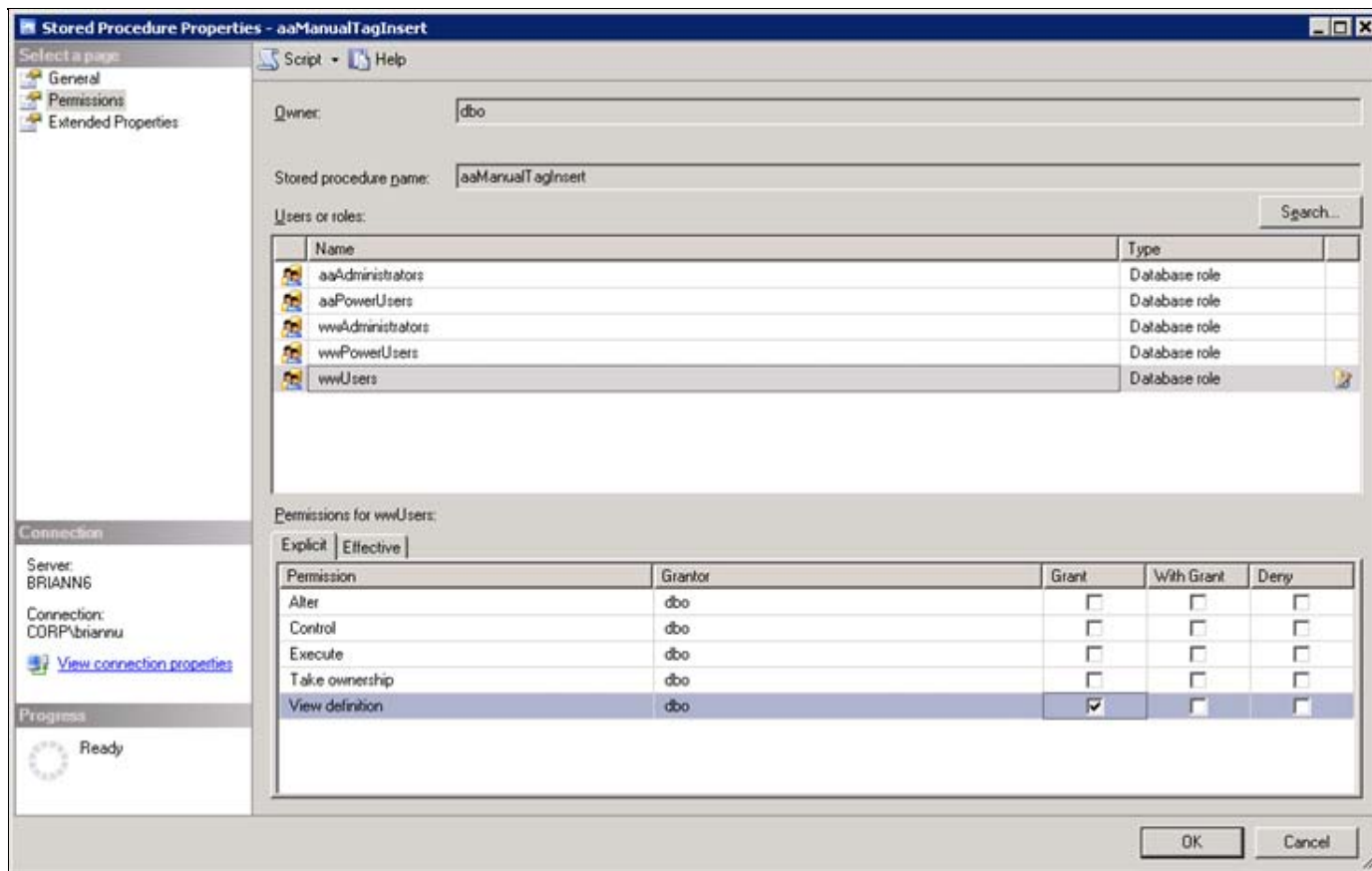


FIGURE 7: GRANT VIEW DEFINITION FOR WWUSERS

11. Repeat steps 5-10 for the **aaUsers** Database role:

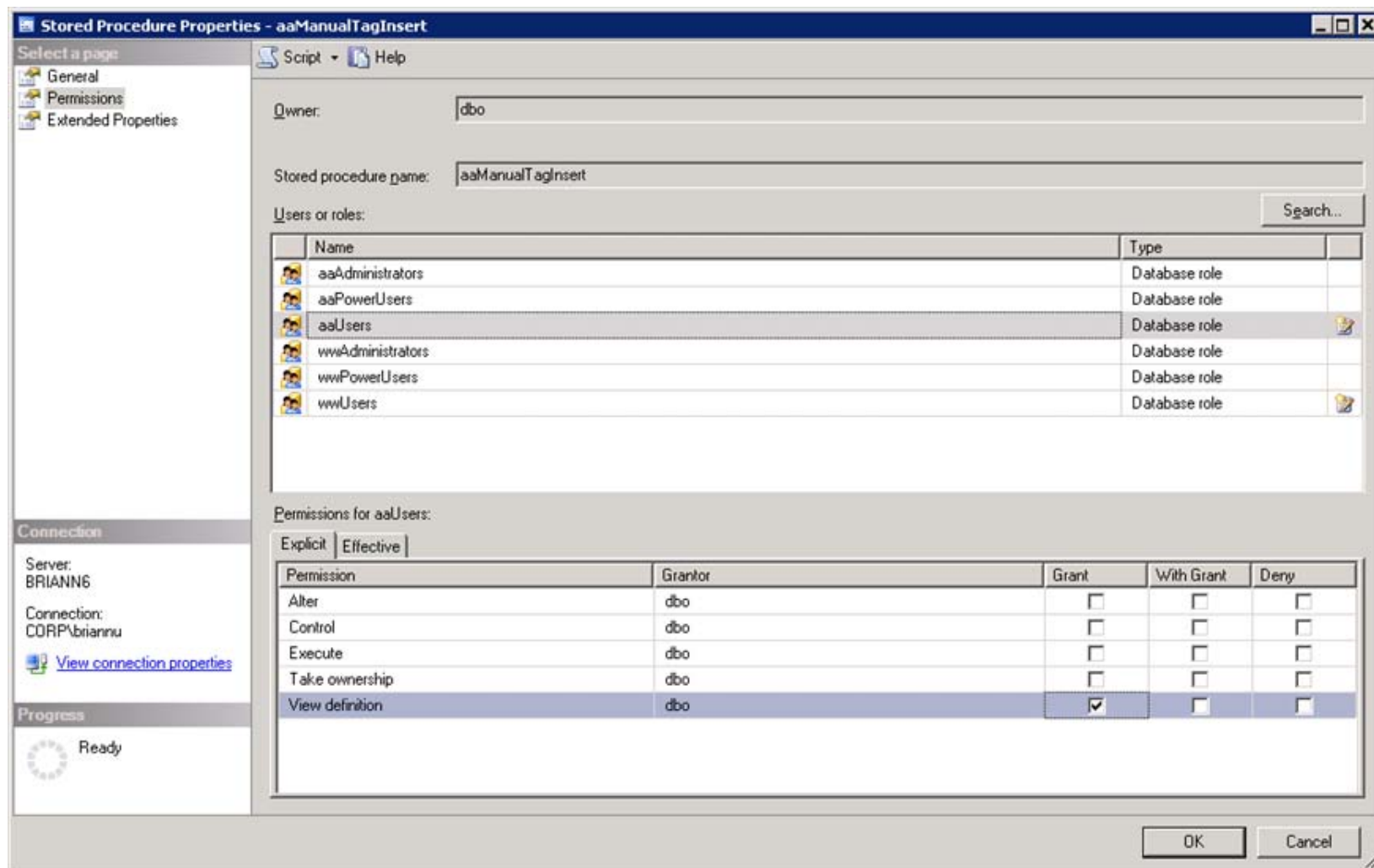


FIGURE 8: GRANT VIEW DEFINITION FOR AAUSERS

- Repeat steps 5-11 in order to configure Grant View definition for both wwUsers and aaUsers for the **dbo.aaManualTagSingleValueInsert** Stored Procedure.

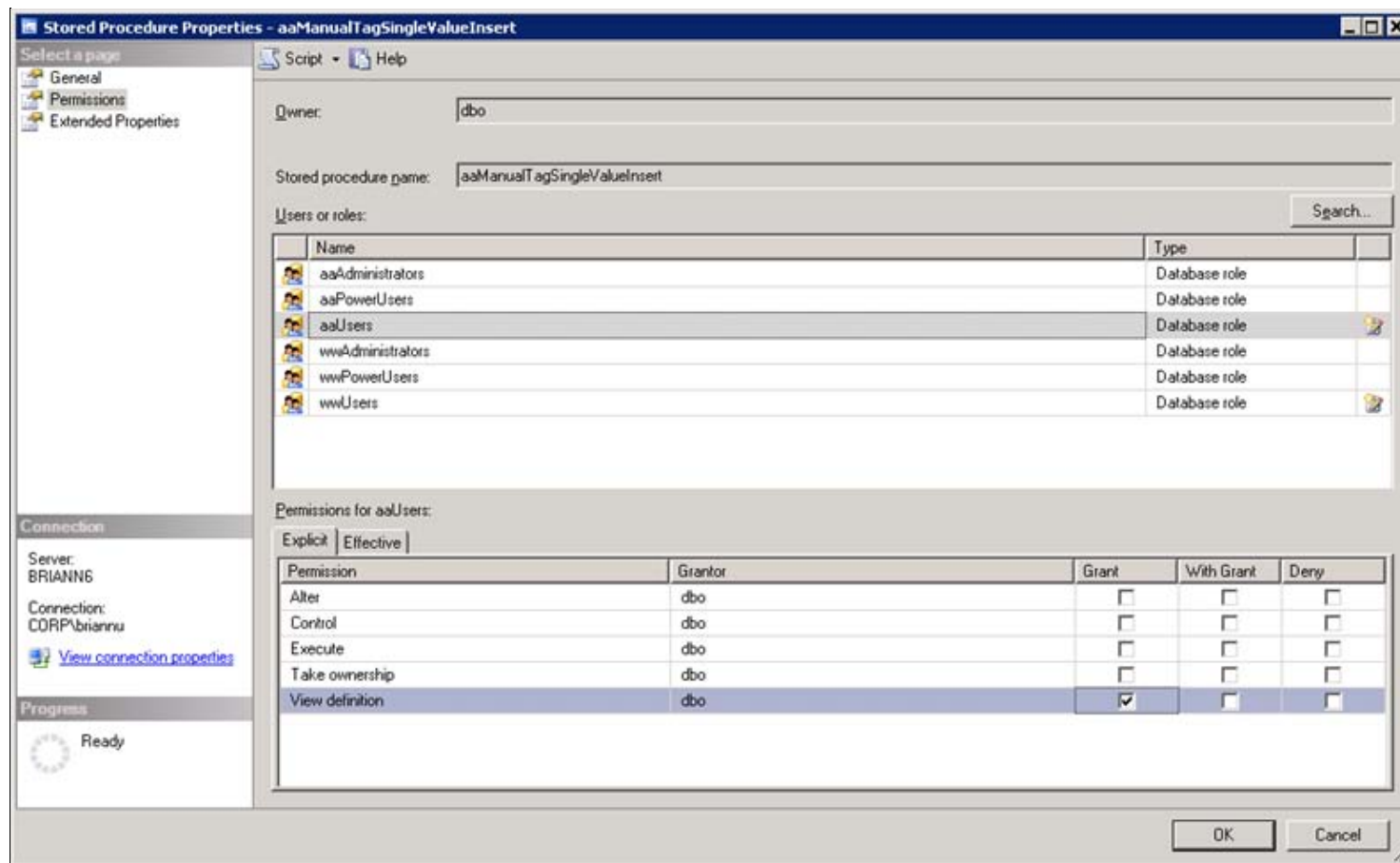


FIGURE 9: GRANT VIEW DEFINITION FOR AAUSERS FOR THE DBO.AAMANUALTAGSINGLEVALUEINSERT STORED PROCEDURE

- Click **OK** then restart the MS SQL Server.

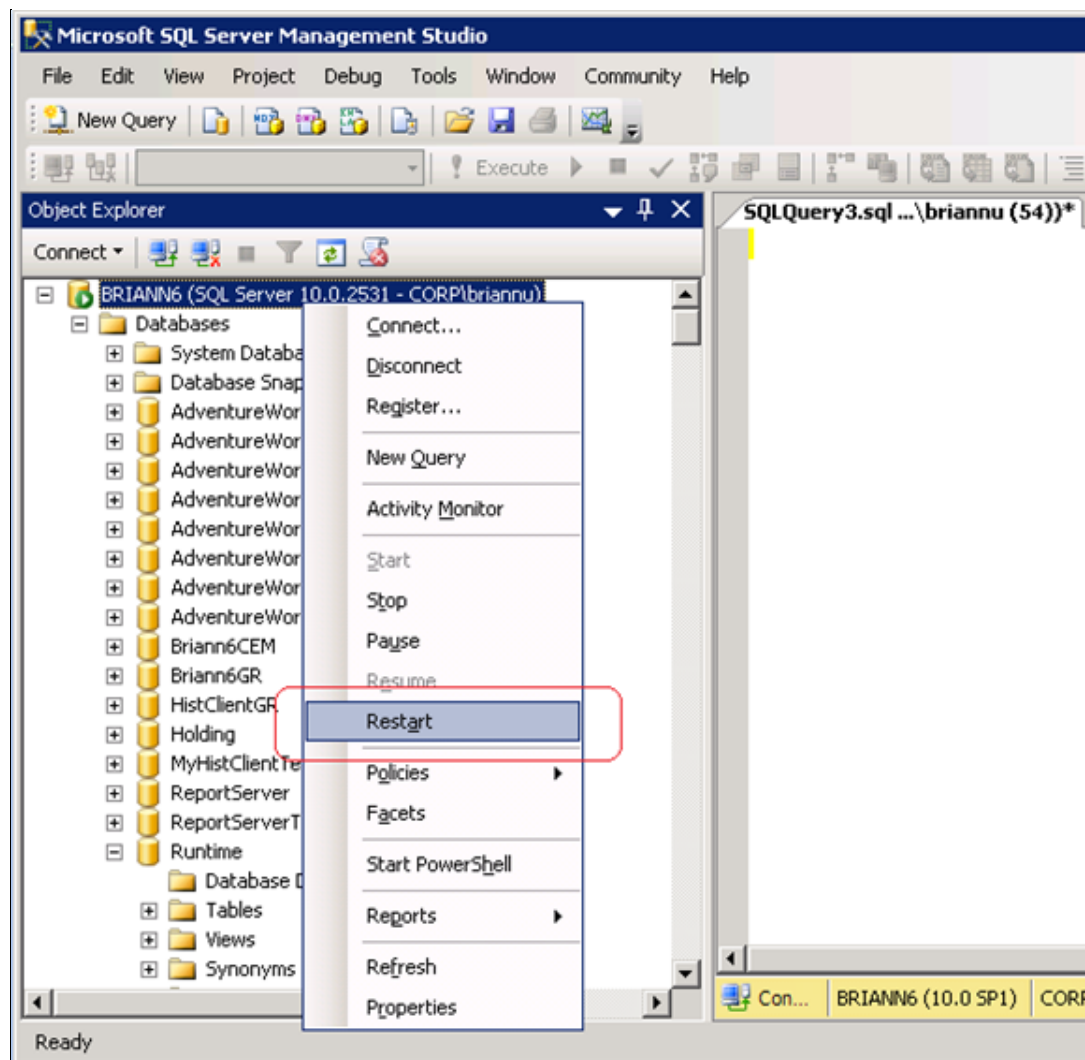


FIGURE 10: RESTART SQL SERVER

14. Click **Yes** when prompted to restart the SQL Server.

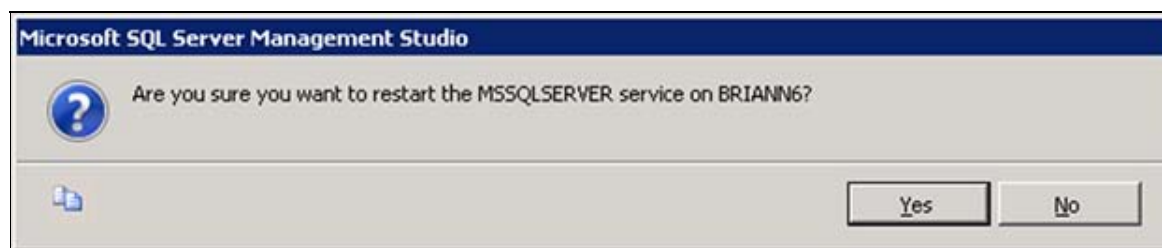


FIGURE 11: RESTART MSSQLSERVER SERVICE

You can now logon from a Historian Client using **wwUser**.

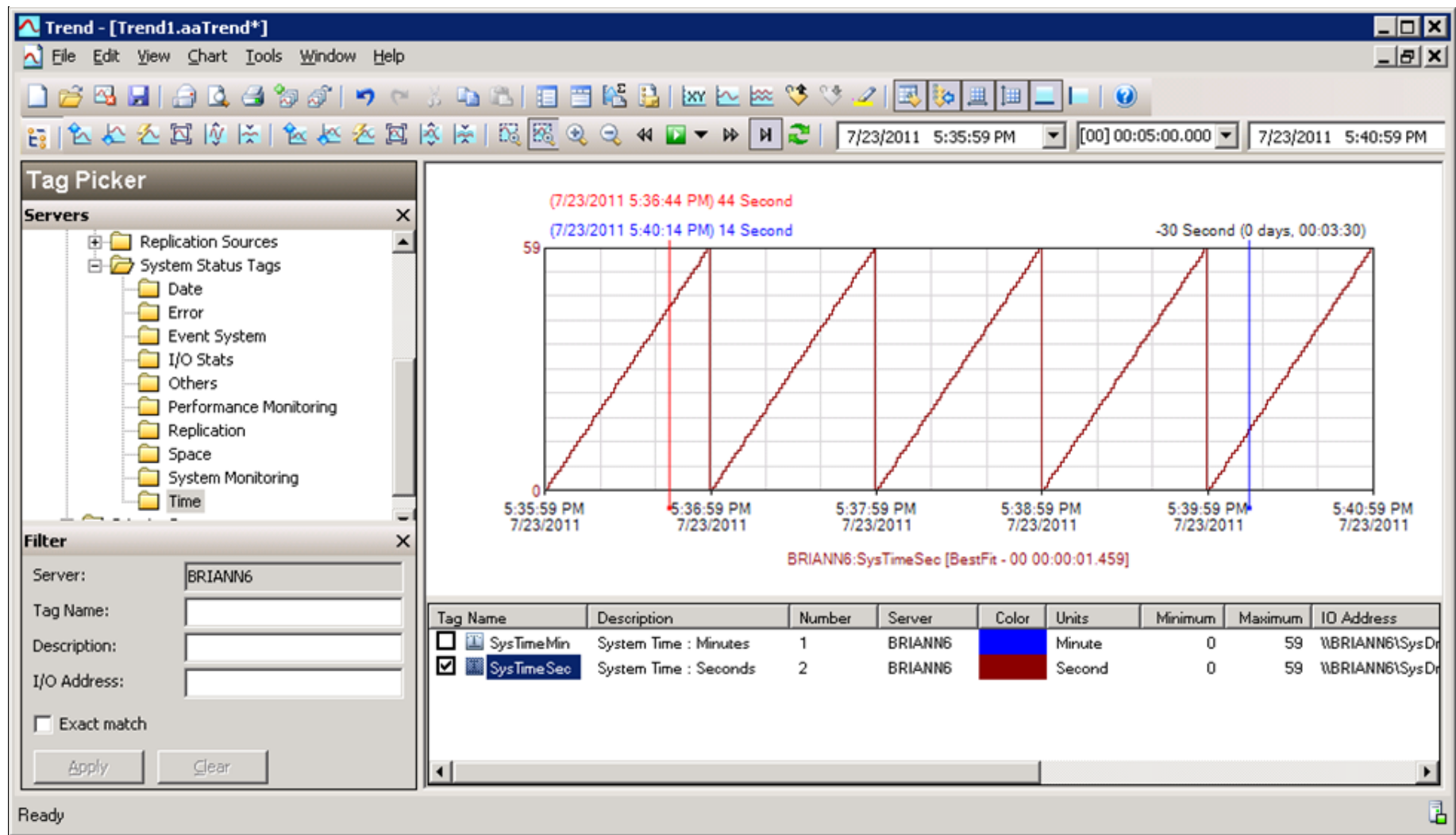


FIGURE 12: SUCCESSFUL CLIENT LOGON

Programmatically

Alternatively, you can run the following Transact-SQL script to grant the appropriate permissions to the stored procedures:

```
USE Runtime
GO
GRANT VIEW DEFINITION ON [dbo].[aaManualTagInsert] TO [wwUsers]
GO
GRANT VIEW DEFINITION ON [dbo].[aaManualTagInsert] TO [aaUsers]
GO
GRANT VIEW DEFINITION ON [dbo].[aaManualTagSingleValueInsert] TO [wwUsers]
GO
GRANT VIEW DEFINITION ON [dbo].[aaManualTagSingleValueInsert] TO [aaUsers]
GO
```

Tech Notes are published occasionally by Wonderware Technical Support. Publisher: Invensys Systems, Inc., 26561 Rancho Parkway South, Lake Forest, CA 92630. There is also technical information on our software products at [Wonderware Technical Support](#).

For technical support questions, send an e-mail to wwsupport@invensys.com.

 [Back to top](#)

©2011 Invensys Systems, Inc. All rights reserved. No part of the material protected by this copyright may be reproduced or utilized in any form or by any means, electronic or mechanical, including photocopying, recording, broadcasting, or by any information storage and retrieval system, without permission in writing from Invensys Systems, Inc. [Terms of Use](#).