

[Tech Note 834](#)

Configuring the MBTCP DAServer (Version 2.0) to Communicate with a MODICON Bridge

This document and software are provided "as is" without warranty of any kind. See the [Terms of Use](#) for more information.

Topic#: 002626

Revised: March, 2010

Introduction

The MBTCP DAServer is one of Wonderware's® Archestra™-based products that provides connectivity to the following PLCs via a Direct Ethernet Connection:

- Quantum
- Momentum
- Premium
- Generic Modbus TCP Device

The MBTCP DAServer also provides connectivity to the following PLCs via a Modbus Bridge Device:

- Compact 984
- Micso
- Momentum
- Generic Modbus Device

This *Tech Note* provides step by step instructions for configuring a connection to a Modbus device via an ethernet bridge using the SMC (System Management Console) where the MBTCP DASServer resides.

Application Versions

- MBTCP DAServer 2.0
- InTouch® 10.1 and later

Adding a TCPIP_PORT Object

1. Open the SMC from the Start menu (**Start/Programs/Wonderware**).

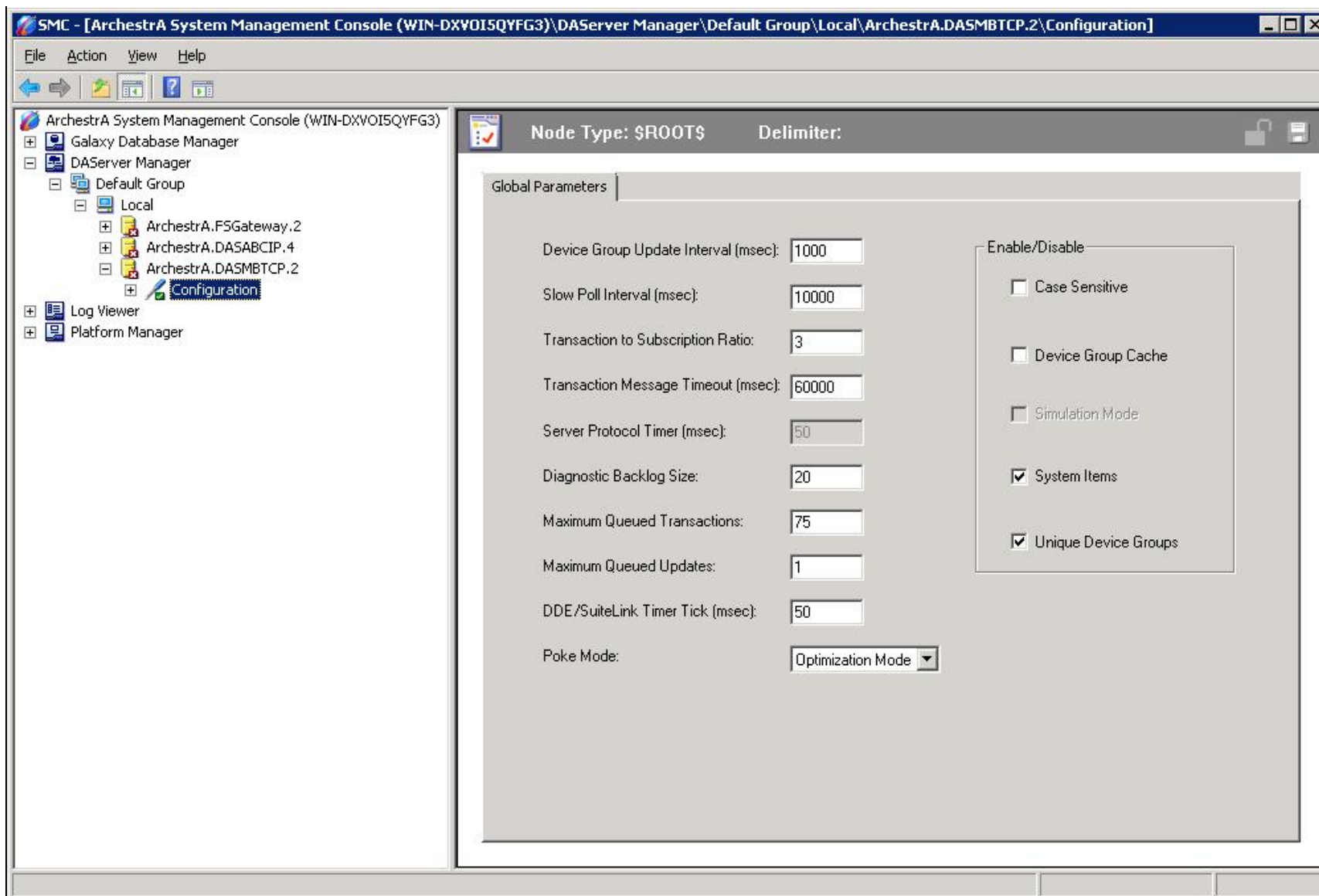


FIGURE 1: SMC

2. Expand the **ArchestrA.DASMBTCP.2** server item.
3. Right-click **Configuration** (just below ArchestrA.DASMBTCP.2) and select **Add TCPIP_PORT Object**.

A new faceplate appears labeled **New_TCPIP_PORT_000 Parameters** (Figure 2 below):

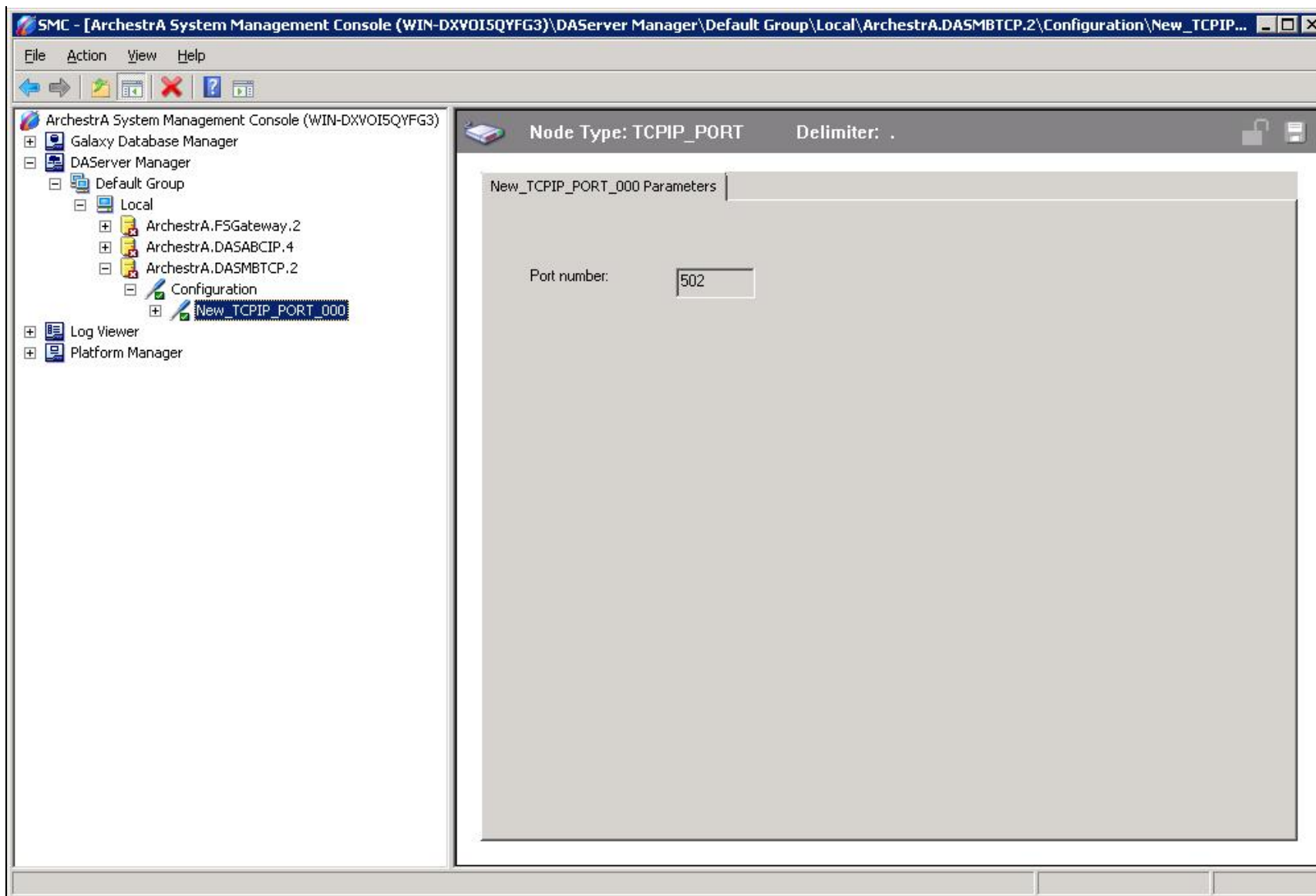


FIGURE 2: NEW_TCPIP_PORT_000 PARAMETERS

Note: You can right-click on any of the items below the **Configuration** item above and rename them to whatever you like.

Adding a "ModbusBridge" Object

1. Right-click **New_TCPIP_Port_000** and click **Add a ModbusBridge Object**.
2. You should now see a new faceplate appear labeled **New_ModbusBridge_000** (Figure 3 below):

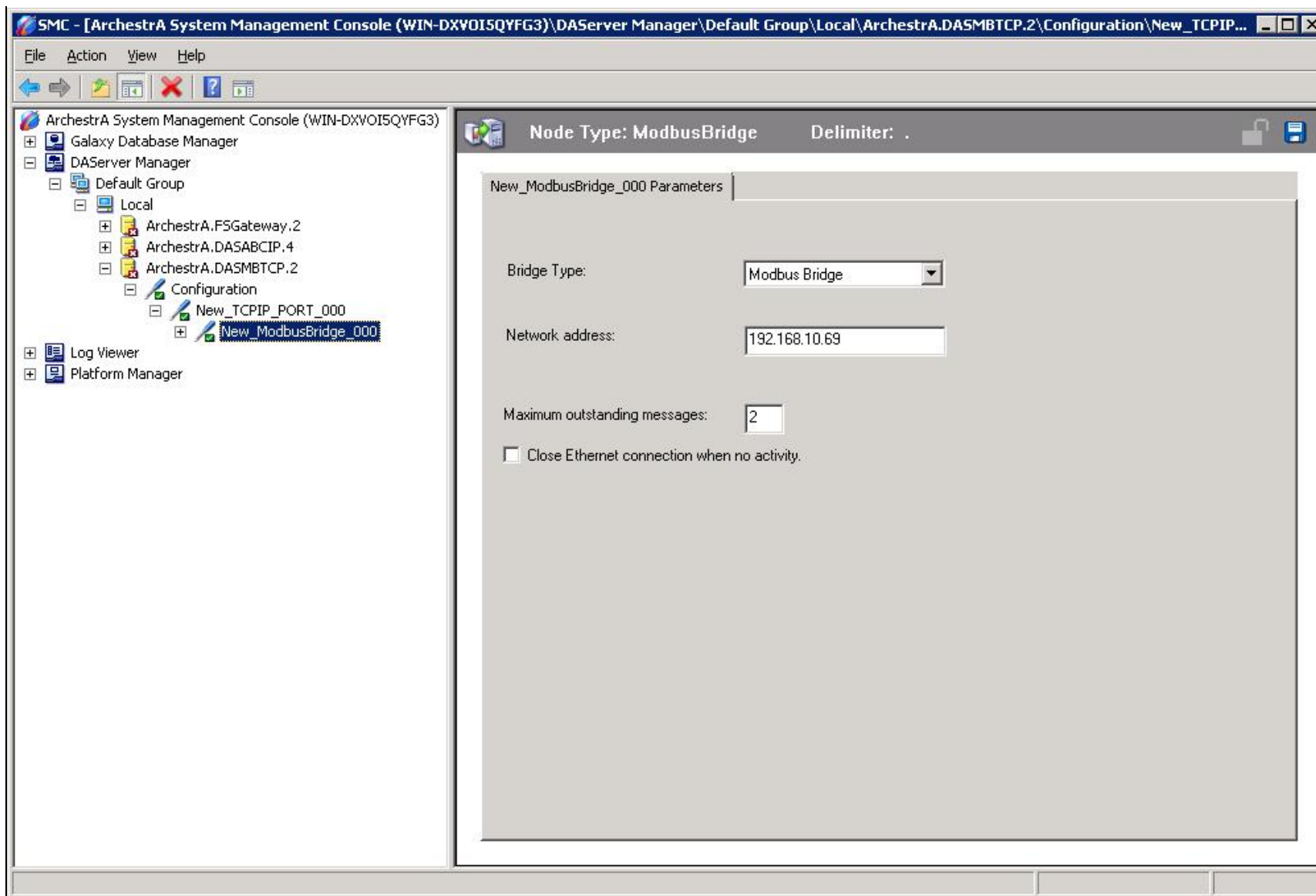


FIGURE 3: NEW MODBUSBRIDGE FACEPLATE

Note: You must provide the Network (IP) address of the device, as shown in Figure 3 above.

Adding a PLC Object

1. Right click the **New_ModbusBridge_000** icon and add a PLC device node. In Figure 4 (below), **Add ModbusPLCRS Object** is selected. It is a generic Modbus device.

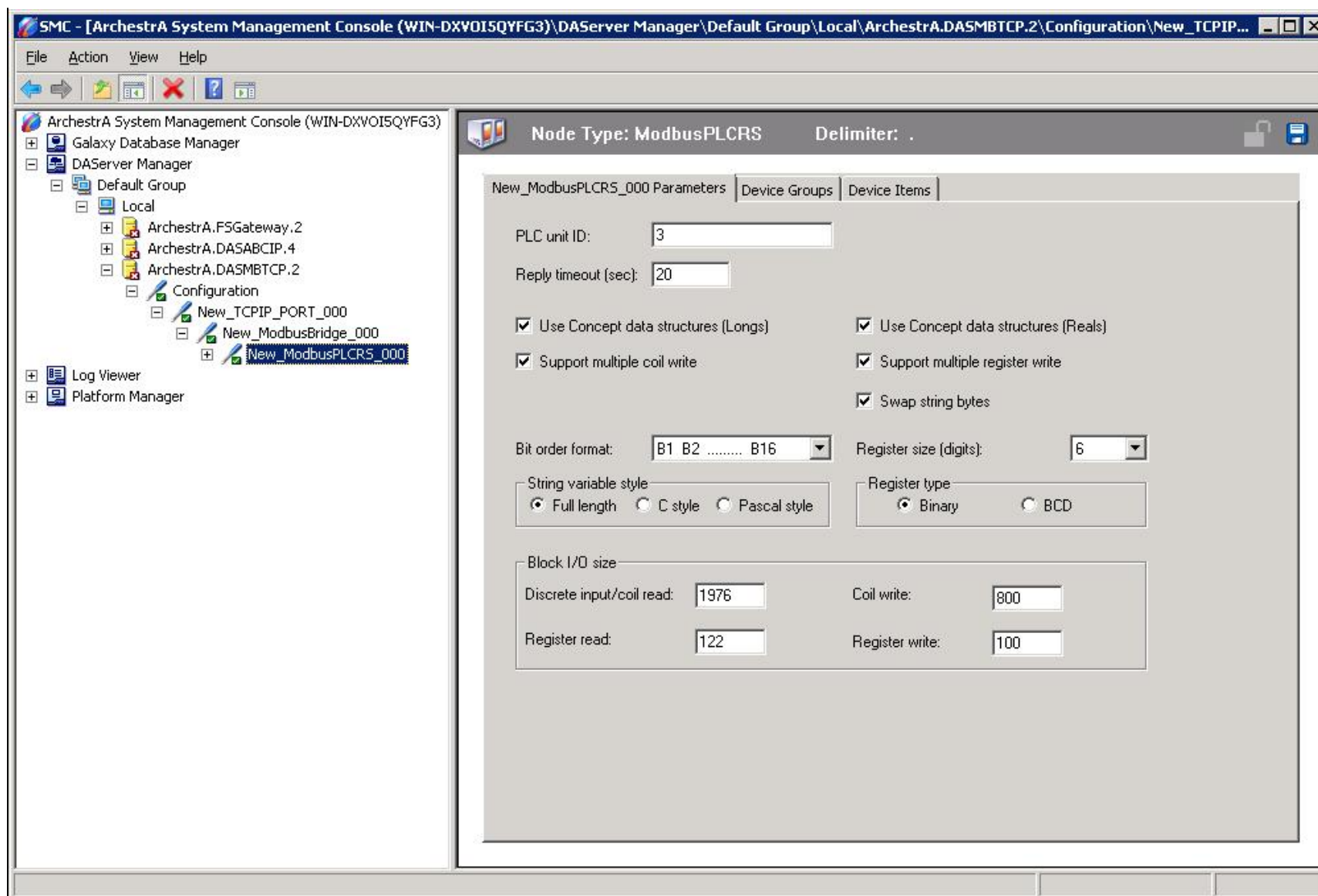


FIGURE 4: NEW_MODBUSPLCRS_000 FACEPLATE

2. Enter the **PLC unit ID** of the end device. (Figure 4 above).

Set Up a Topic Definition in the Device Group

You must set up a Topic Definition so that Suitelink/DDE clients can communicate with the MBTCP DAServer.

1. Select the **Device Groups** tab (Figure 4, above).
2. Right-click in the first row, and select **Add**. A new topic appears with a default name of **Topic_0**.
3. Change **Topic_0** to whatever you want by right-clicking on it and clicking **Rename**. In the following figure, the Topic is called **PLC3** (Figure 5 below):

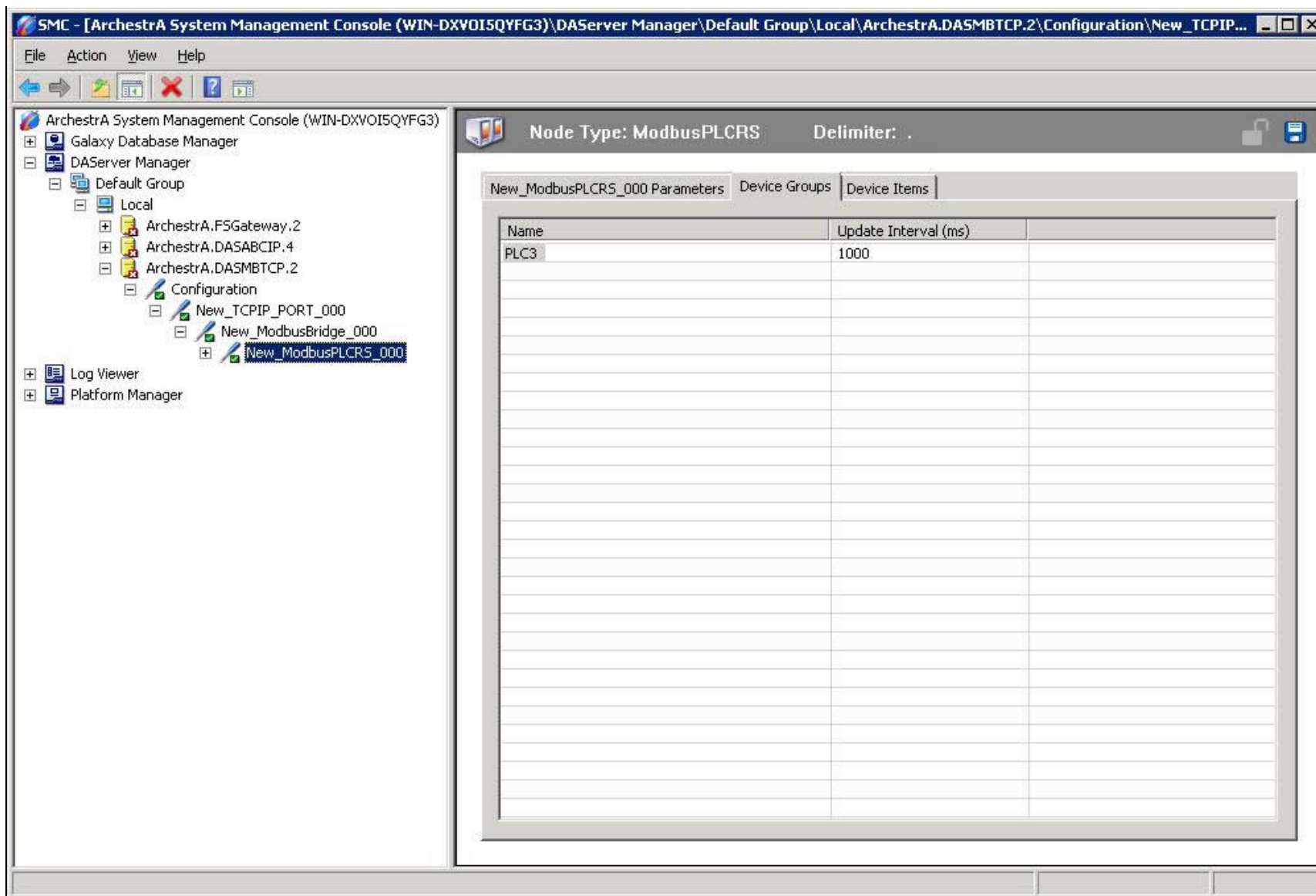


FIGURE 5: RENAME THE TOPIC

Creating a Test InTouch® Application to Communicate with the MBTCP DAServer

1. Launch InTouch WindowMaker™.
2. Click **Special/Access Names** from the top menu bar. The **Access Names** dialog box appears.
3. Click the **Add** button. The **Add Access Name** dialog box appears:

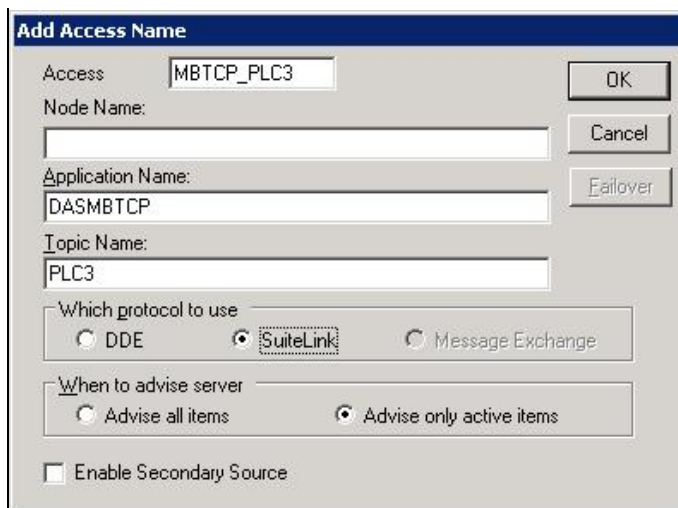


FIGURE 6: ADD ACCESS NAME

4. Type the information for the **Access** and **Application Name** field as it appears in Figure 6 (above).
5. For the topic name, type the name of the topic you renamed in the **Device Groups** tab field (Figure 5, above) of the MBTCP DAServer.
6. Click **OK** then click **Close**.
7. Click **Special/Tagname Dictionary** from the top menu bar. The **Tagname Dictionary** dialog box appears.
8. Click the **New** button and enter the following information:
 - Tagname: **r400001**
 - Type: **I/O Integer**
 - Min EU: **0**
 - Min Raw: **0**
 - Max EU: **65535**
 - Max Raw: **65535**
 - Access Name: **MBTCP_PLC3**
 - Item: **400001**

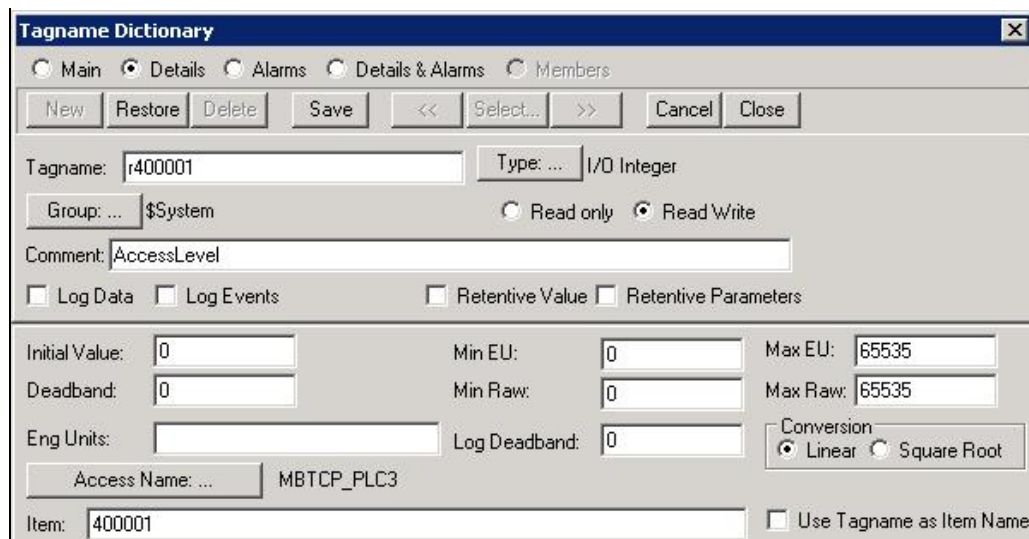


FIGURE 7: TAGNAME DICTIONARY

9. Click the **Save** button then click the **Close** button.
10. Select **File/New Window** from the top menu bar. The **Window Properties** dialog box will appear.
11. Enter a **Name** for the window then click **OK**.
12. Select the **Text** object from the **Draw Object Toolbar**.
13. Place the **Text** object on the new window then type a **#**. The screen should look similar to Figure 8 (below):

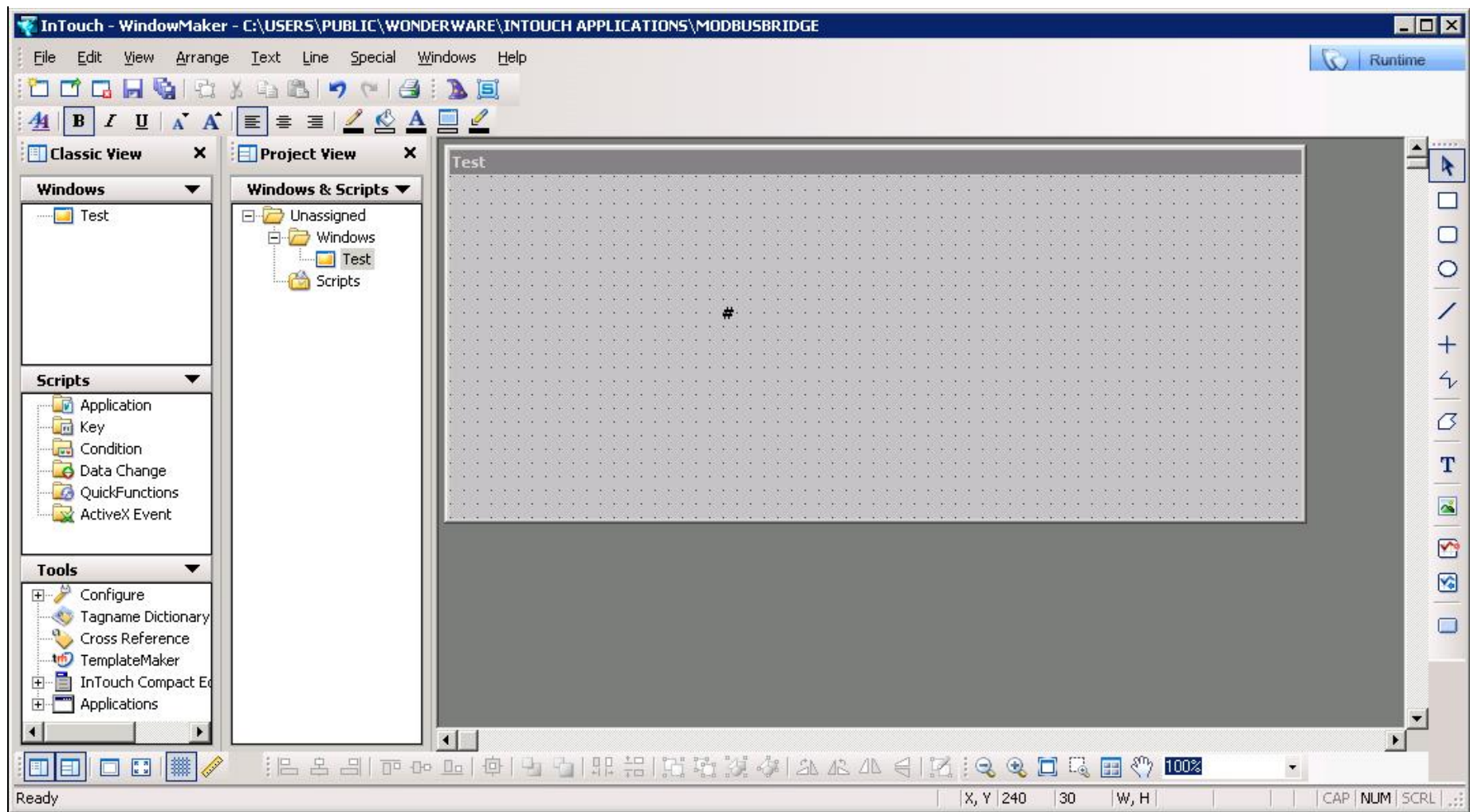


FIGURE 8: INTOUCH WINDOW

14. Double click the # then select **Analog** under the **Value Display** section.
15. Enter the name of the tag you created (see Figure 7) in the **Expression** box.

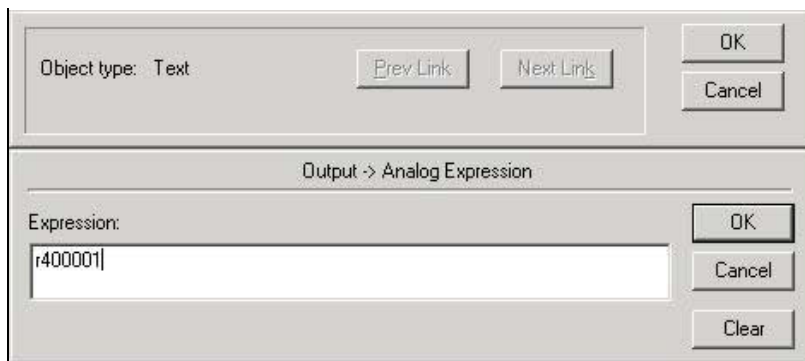


FIGURE 9: ASSIGNING AN EXPRESSION

16. Select **OK** then click **OK** again.
17. Select **File/Save Window** then click **OK**.

Testing Communication

1. From the **SMC**, right click on **Archestra.DASMBTCP.2** then select **Activate Server**.
2. From **Window Maker**, select **File/WindowViewer** from the top menu.
3. Make sure the window that was created in **WindowMaker** is selected, then click **OK**.
4. WindowViewer should show the value for register **400001** (Figure 10 below).

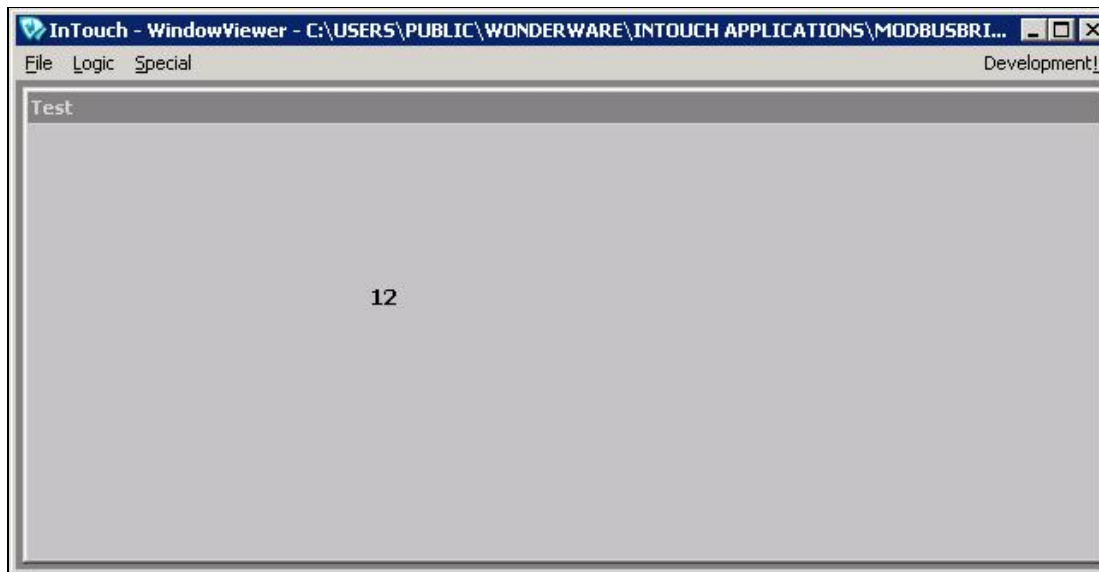


FIGURE 10: WINDOW VIEWER

You can also use **DASMBTCP Diagnostics** to view the register value:

1. Open the **SMC**.
2. Under **Archestra.DASMBTCP.2** click **Diagnostics/Device Groups/PLC3**

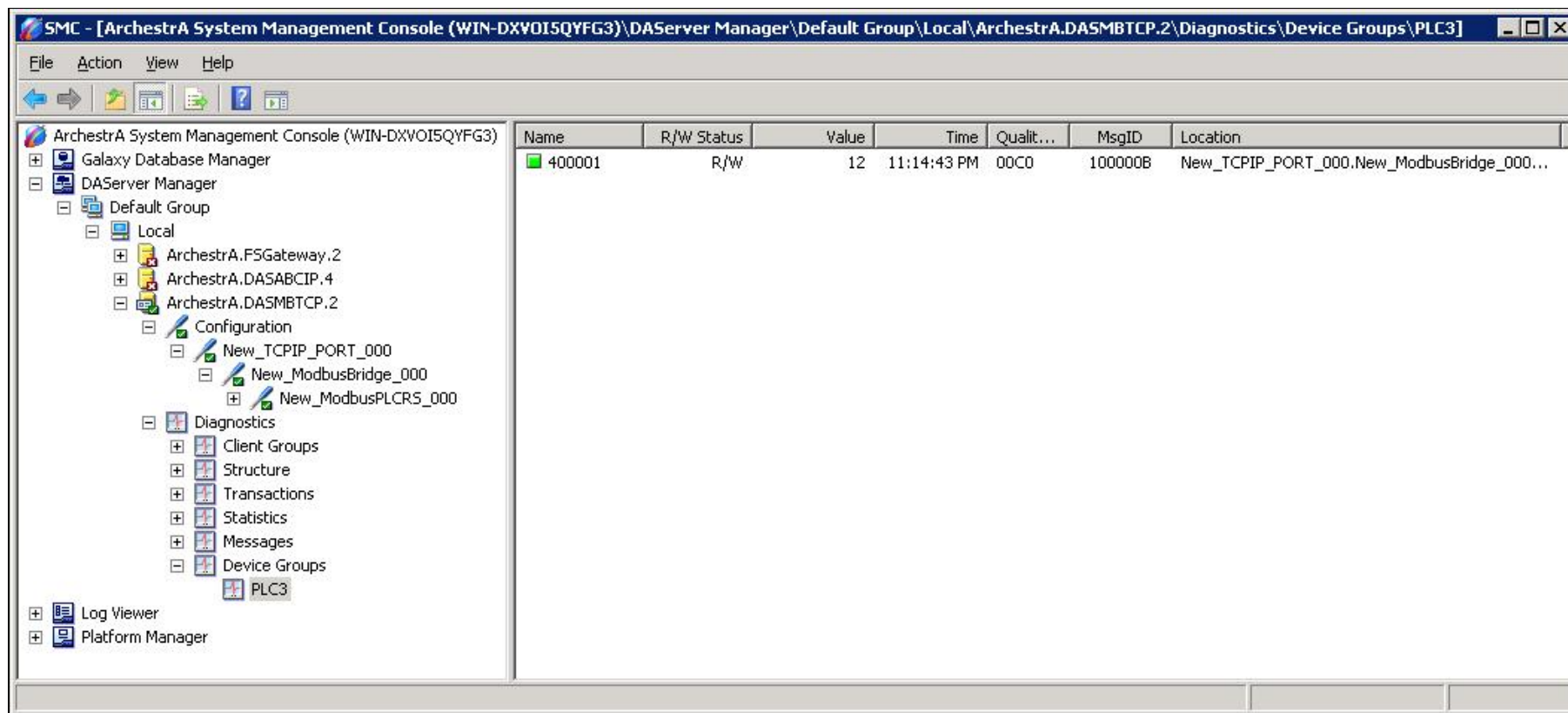


FIGURE 11: DASMBTCP DIAGNOSTICS

G. Alldredge

Tech Notes are published occasionally by Wonderware Technical Support. Publisher: Invensys Systems, Inc., 26561 Rancho Parkway South, Lake Forest, CA 92630. There is also technical information on our software products at [Wonderware Technical Support](#).

For technical support questions, send an e-mail to wwsupport@invensys.com.

 [back to top](#)

©2012 Invensys Systems, Inc. All rights reserved. No part of the material protected by this copyright may be reproduced or utilized in any form or by any means, electronic or mechanical, including photocopying, recording, broadcasting, or by any information storage and retrieval system, without permission in writing from Invensys Systems, Inc. [Terms of Use](#).