

[Tech Note 846](#)

Installing Wonderware Information Server (WIS) on the Windows Server 2008 64 and 32-bit Operating System

All Tech Notes, Tech Alerts and KBCD documents and software are provided "as is" without warranty of any kind. See the [Terms of Use](#) for more information.

Topic#: 002639
Created: March 2012

Introduction

This *Tech Note* contains tips to ensure a successful Wonderware Information Server (WIS) default installation on the Windows Server 2008 64 and 32-bit operating system.

Note: IIS7 Reporting Services are used for both MES and WIS Reports. IIS7 Web Server Roles configuration steps in this Tech Note **supersede** the IIS configuration steps in [Tech Note 783: Installing Web Service \(IIS\) Role and Role Services Prerequisites for MES 4.0](#).

Application Versions

- Wonderware Information Server (WIS) 4.0 or later
- Microsoft SQL Server 2005 or Microsoft SQL Server 2008 Based on the version of WIS installed
- Microsoft Windows Server 2008 64 and 32-bit
- Internet Explorer 8 and later

Assumptions

This *Tech Note* assumes that you are familiar with the following products:

- Wonderware Information Server (WIS) 4.0 or later.
- Microsoft SQL Server version 2005 or later Installation.

To install these features

1. Open **Server Manager** or **right click on my computer and choose Manage**.
2. In the right panel, Click **ADD Roles** section.

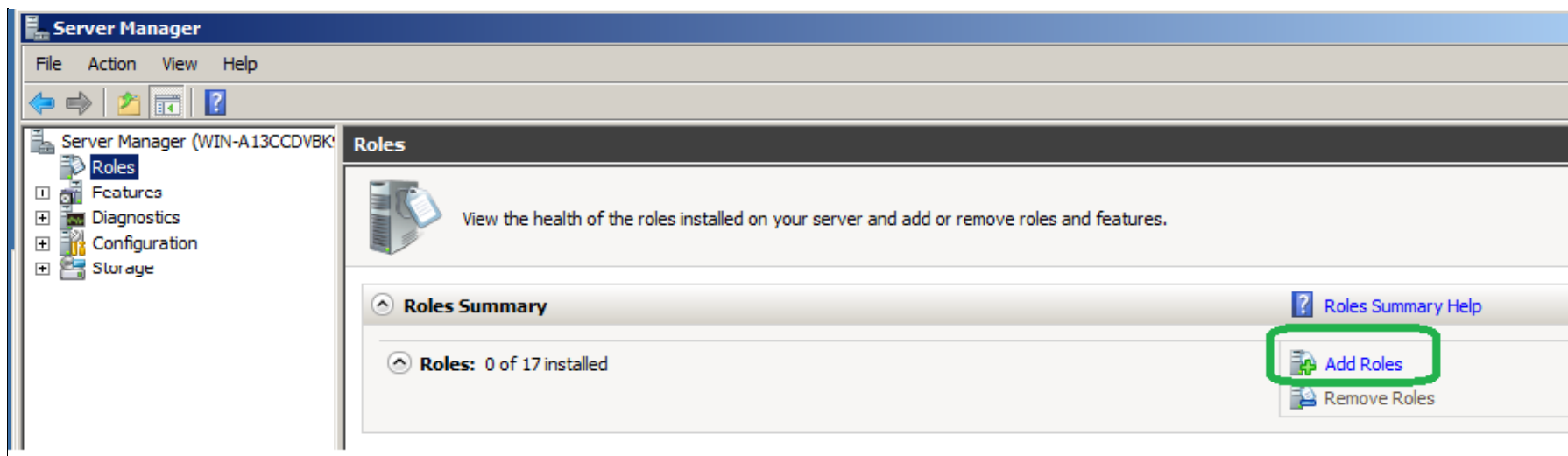


FIGURE 1: ADD ROLES

3. Click **Next** on **Before You Begin** screen.
4. Select **Web Server (IIS)** Role to install, and then Click **Next**.

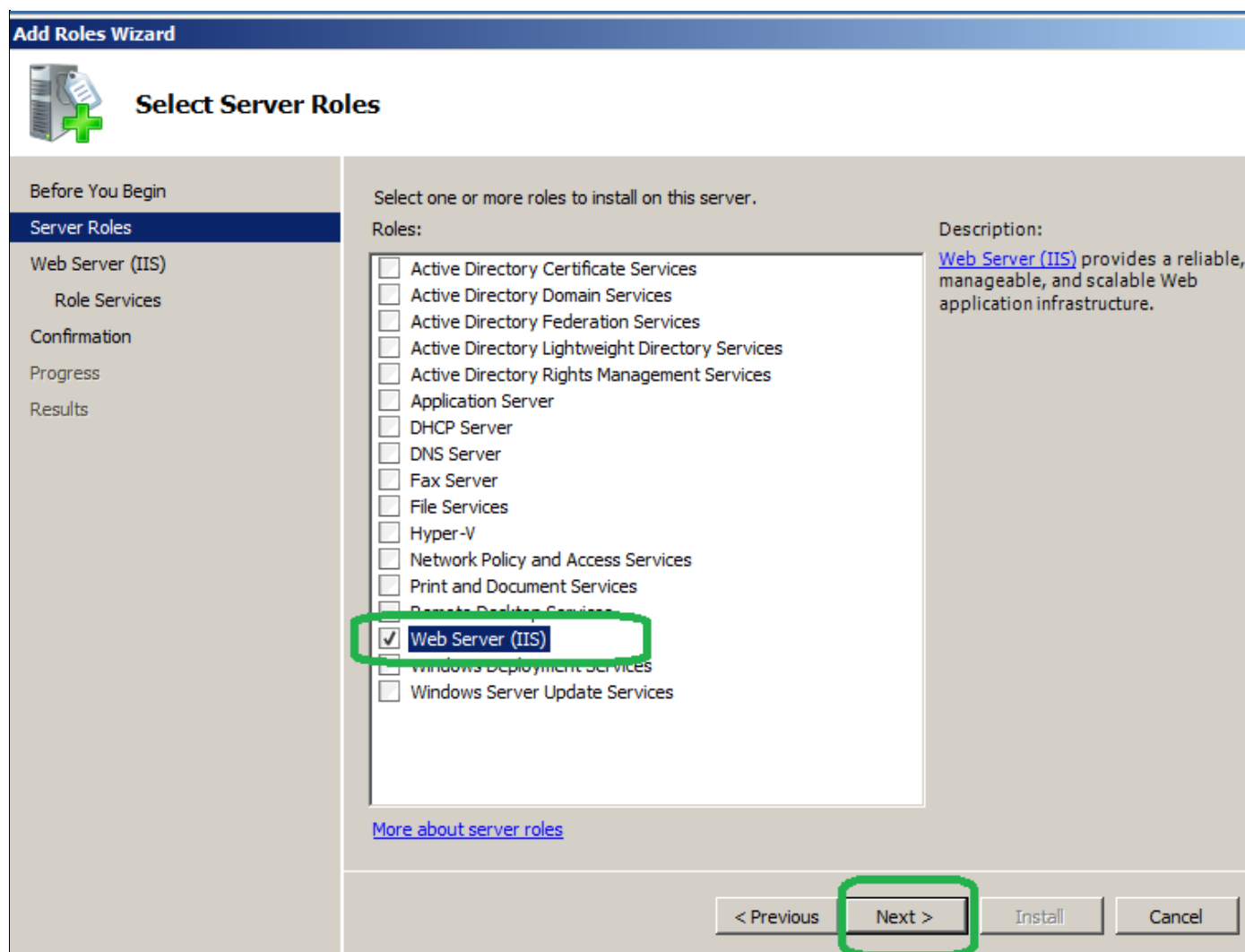


FIGURE 2: WEB SERVER (IIS) ROLE FOR INSTALL

5. Click **Next** in the **Web Server (IIS)** Notification page.
6. Select **Role Services** as is shown in Figure 1, 2, and 3.
7. **Note:** Some **Role Services** may require a Dependency service, and Need to click on **Add Required Role Services** like the one shown for **ASP.NET** Role Service.

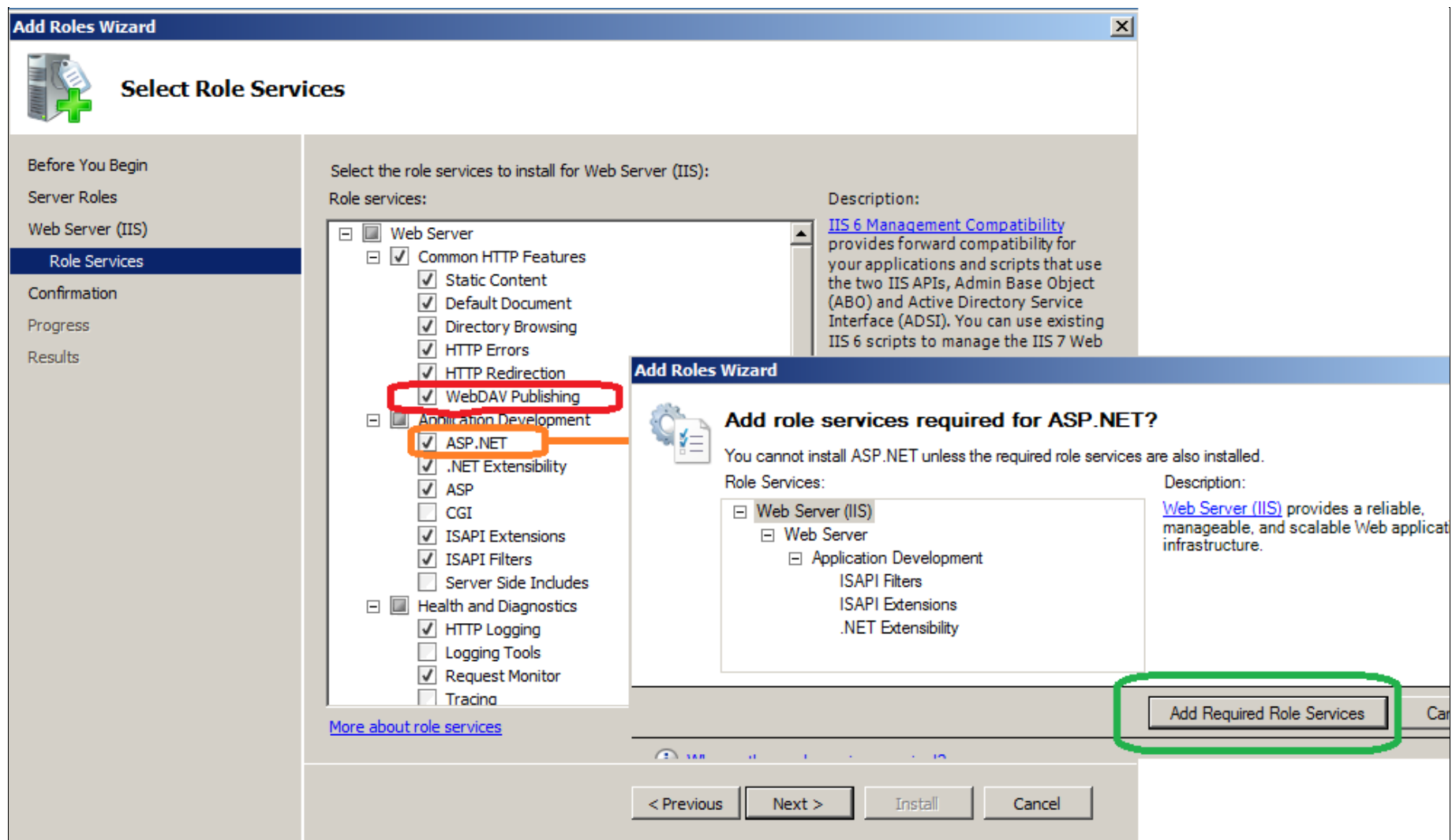


FIGURE 3: SELECT ROLE SERVICES

Note: WebDAV Publishing Role service is only available in Windows 2008 R2.

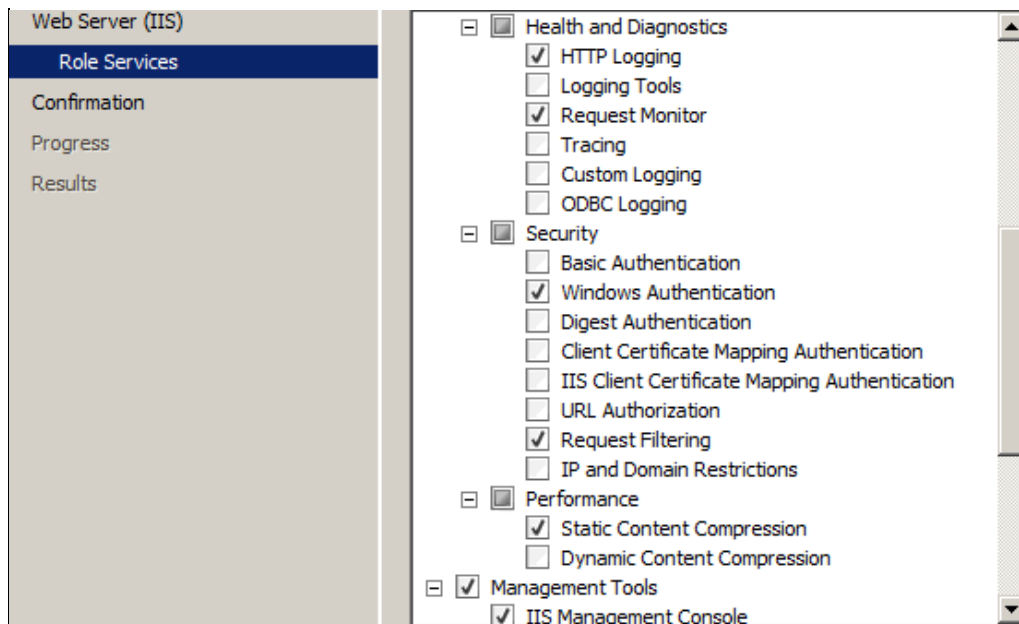


FIGURE 4: SELECT ROLE SERVICES (2)

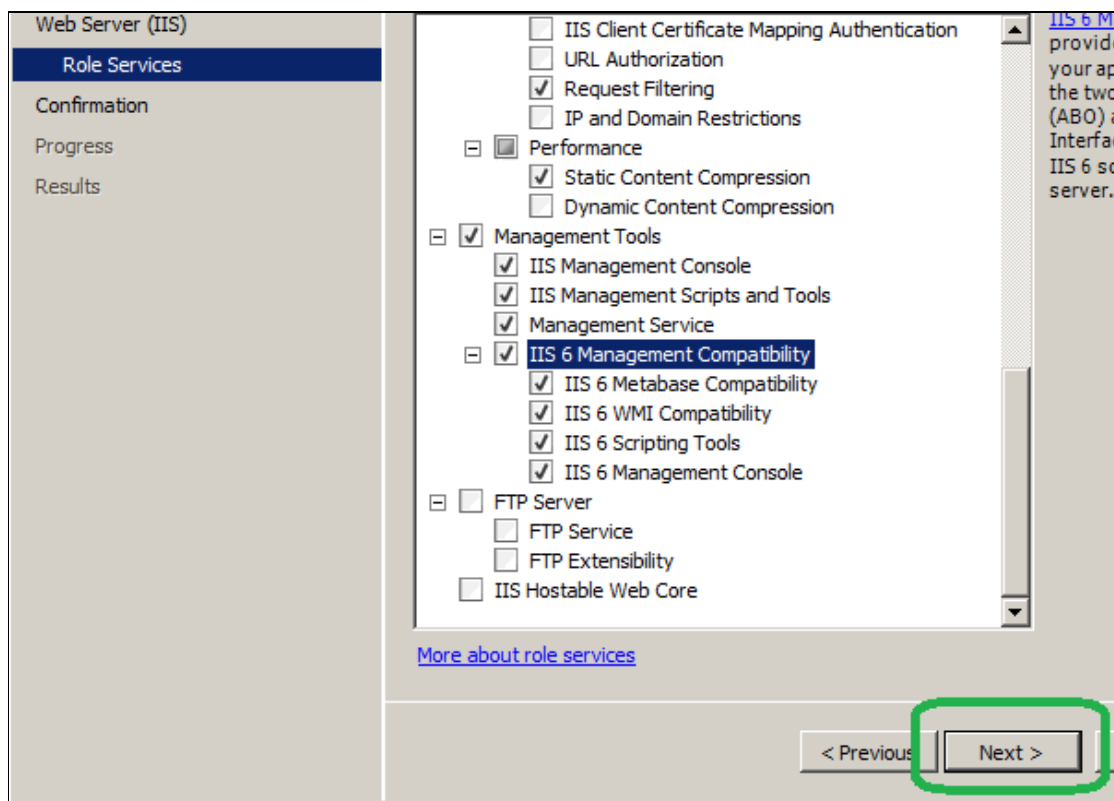


FIGURE 5: SELECT ROLE SERVICES (3)

At this point you should have the Following **Role Services** selected:

Web Server

Common HTTP Features

- Static Content
- Default Document
- Directory Browsing
- HTTP Errors
- HTTP Redirection
- WebDAV Publishing

Application Development

- ASP.NET
- .NET Extensibility
- ASP
- ISAPI Extensions
- ISAPI Filters

Health and Diagnostics

- HTTP Logging
- Request Monitor

Security

- Windows Authentication
- Request Filtering

Performance

- Static Content Compression

Management Tools

- IIS Management Console
- IIS Management Scripts and Tools

- Management Service
 - IIS 6 Management Compatibility
 - IIS 6 Metabase Compatibility
 - IIS 6 WMI Compatibility
 - IIS 6 Scripting Tools
 - IIS 6 Management Console
8. Click **Install** on **Confirm Installation Selections** Window.
9. Click **Close** when you see **Installation Results**.

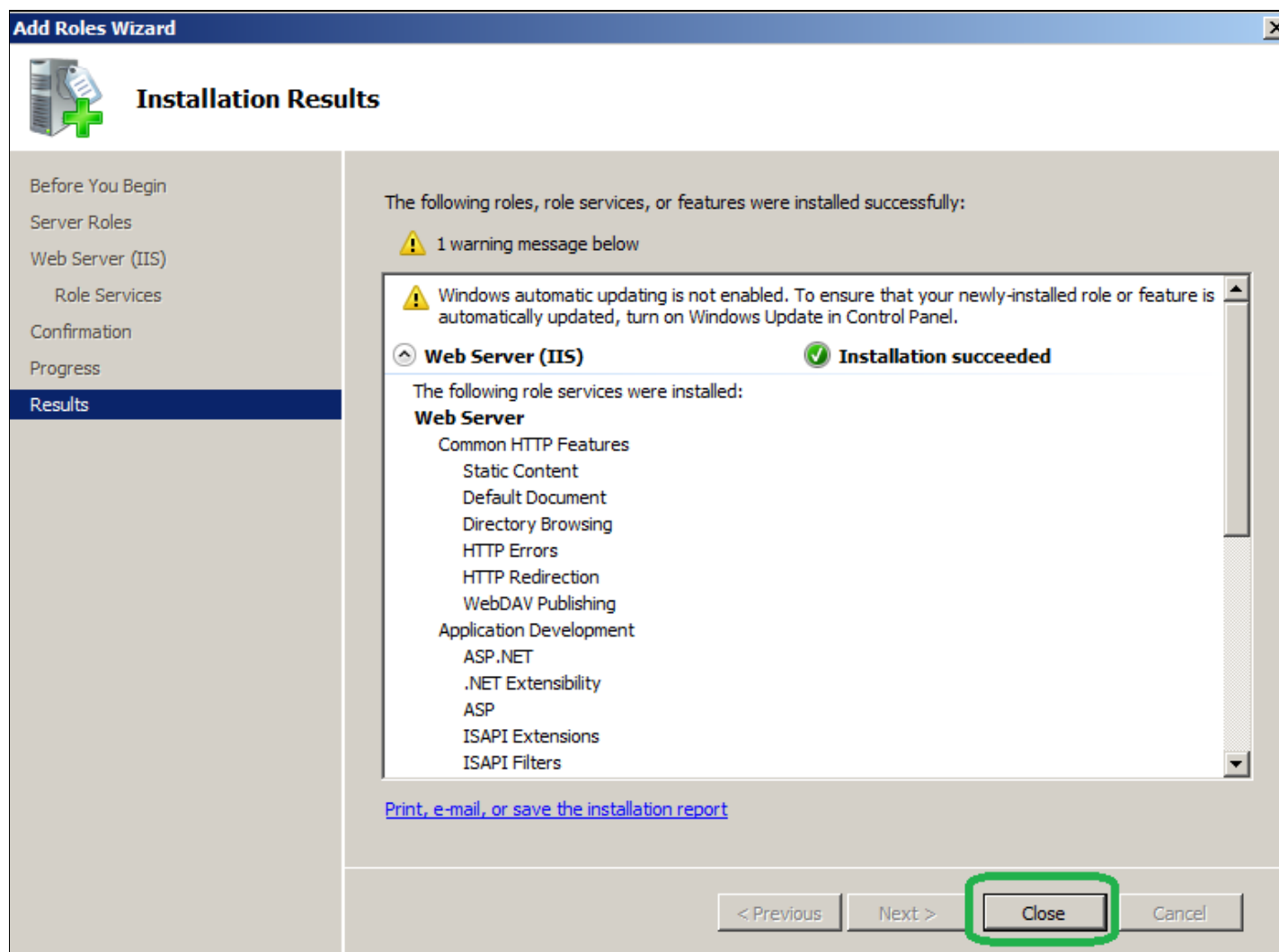


FIGURE 6: INSTALLATION RESULTS WIZARD

At this point you should have the Web Server (IIS) Role configured.

10. You should be able to browse the main IIS page by using the following URL in Internet Explorer:

http://localhost

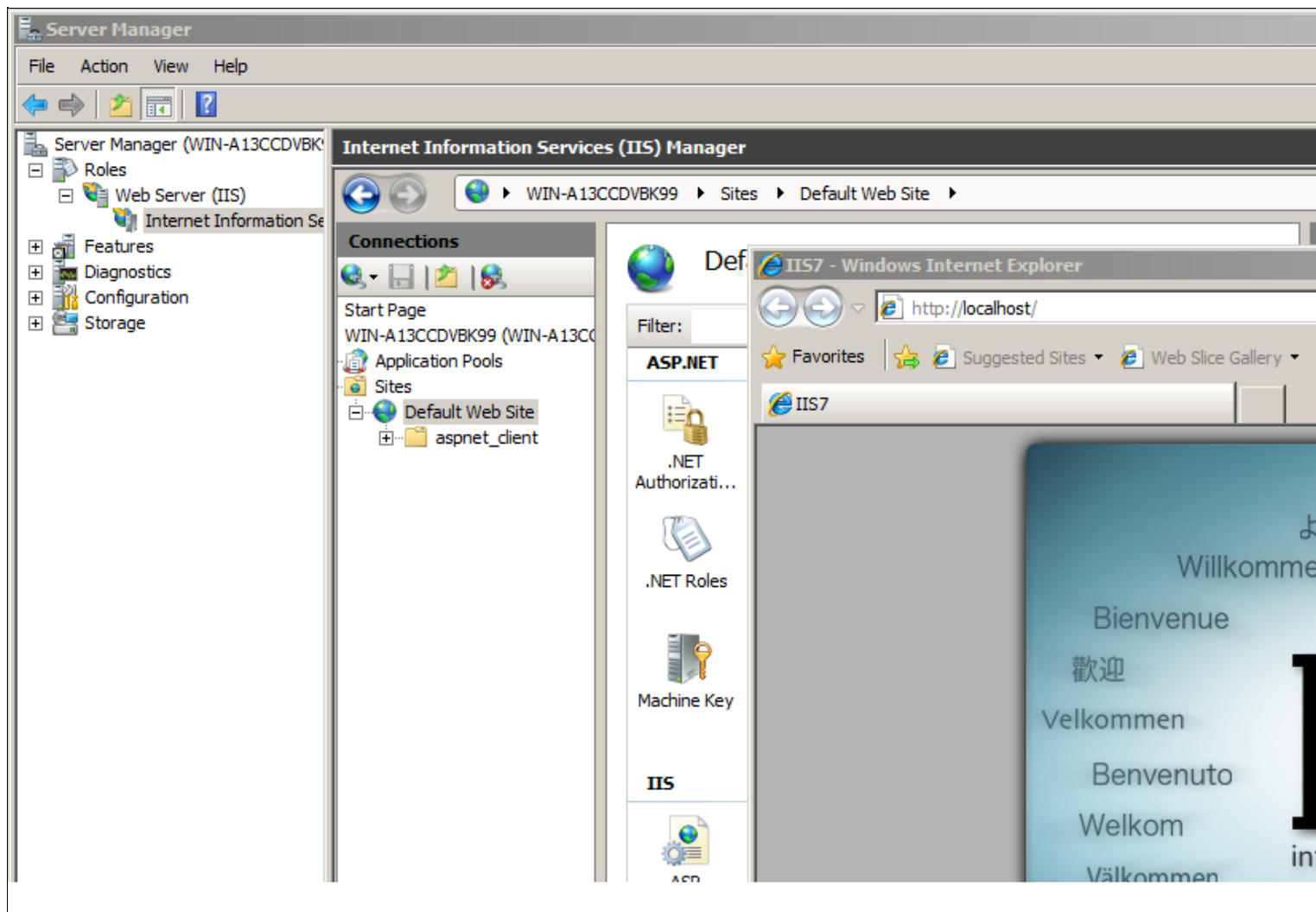


FIGURE 7: DEFAULT IIS WEB SITE

To configure Wonderware Information Server

1. Click **Start > All Programs > Wonderware > Common**, then select **Configurator** from the list.
2. Expand **Wonderware Information Server** and click **Information Server**.
3. Configure the **Database Configuration** and **Application Account** section (Figure 4 below), then click **Configure**.

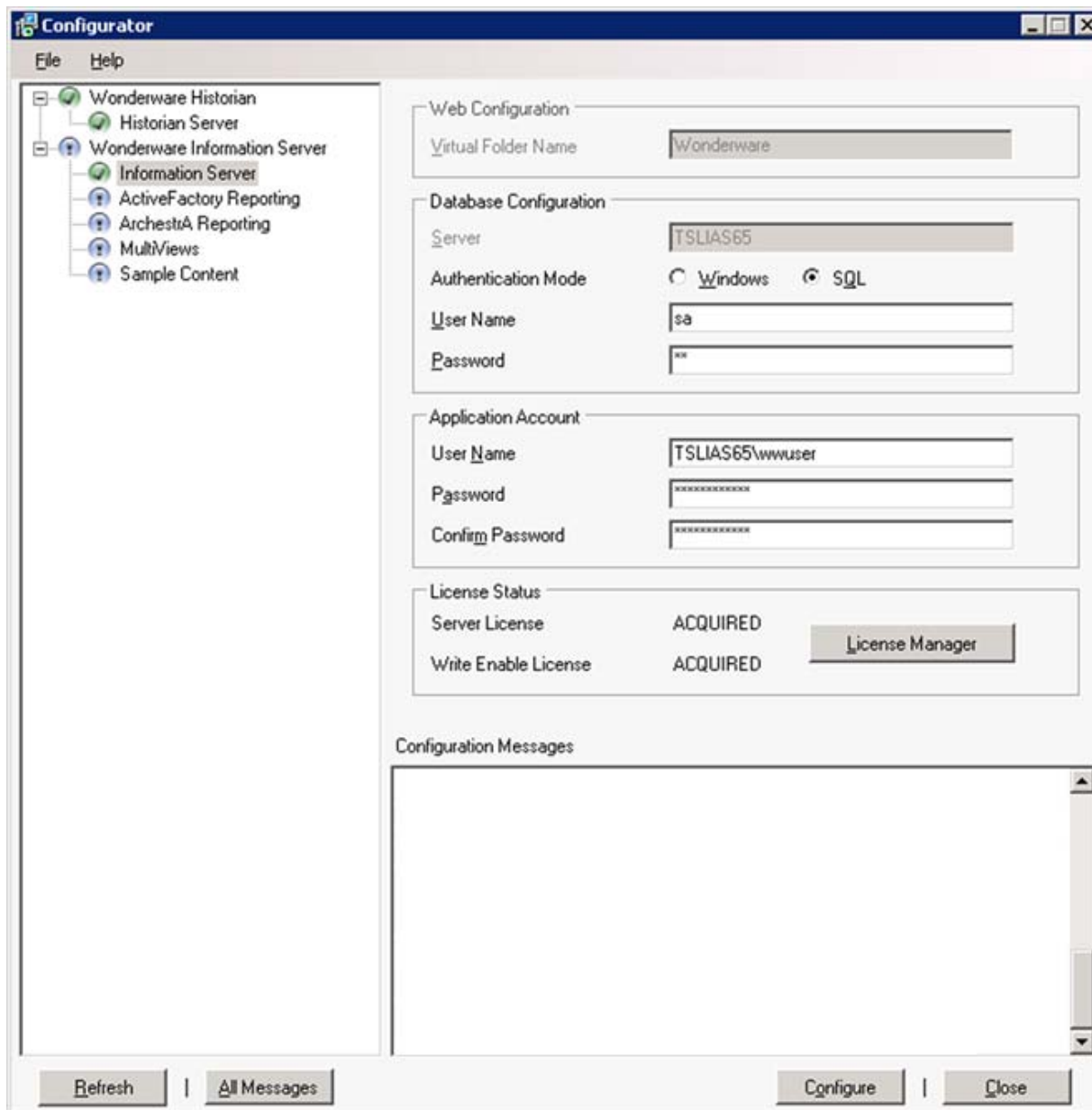


FIGURE 8: CONFIGURE INFORMATION SERVER OPTIONS IN CONFIGURATOR

Configurator will check for Required IIS Role Services Installed and can display a message (Figure 9 below) if it doesn't find a required Role Service.

4. Double-click the red error message in the Configuration Messages panel to view more details (Figure 10 below).

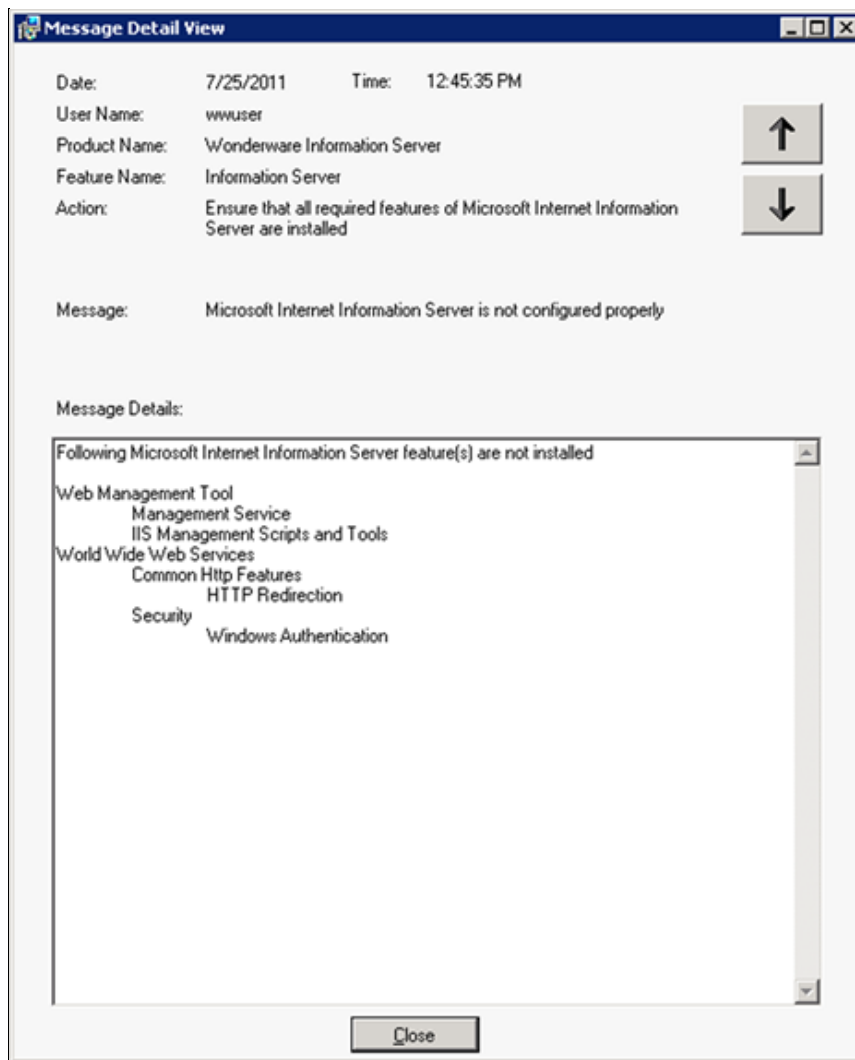


FIGURE 9: CONFIGURATION ERROR DETAILS

Per the message details, the following IIS Role Services are not installed:

- Web Management Tool: Management Service and IIS Management Scripts and Tools
- World Wide Web Services (IIS): Common Http Features HTTP Redirection and Security Windows Authentication

References

- To configure ActiveFactory Reporting *after* configuring WIS, see [Tech Note 704 Configuring ActiveFactory Reporting from Wonderware Information Server \(WIS\)](#).
- To enable and configure WebDAV see [Tech Note 784 Installing and Enabling the WebDAV Extension Module for Wonderware Information Server \(WIS\)](#).

K. Nourbakhsh, B. Nguyen

Tech Notes are published occasionally by Wonderware Technical Support. Publisher: Invensys Systems, Inc., 26561 Rancho Parkway South, Lake Forest, CA 92630. There is also technical information on our software products at [Wonderware Technical Support](#).

For technical support questions, send an e-mail to wwsupport@invensys.com.



[Back to top](#)

©2012 Invensys Systems, Inc. All rights reserved. No part of the material protected by this copyright may be reproduced or utilized in any form or by any means, electronic or mechanical, including photocopying, recording, broadcasting, or by any information storage and retrieval system, without permission in writing from Invensys Systems, Inc. [Terms of Use](#).