

[Tech Note 847](#)

Installing Wonderware Information Server (WIS) on the Windows Server Window 7 64 and 32-bit Operating System

All Tech Notes, Tech Alerts and KBCD documents and software are provided "as is" without warranty of any kind. See the [Terms of Use](#) for more information.

Topic#: 002640
Created: April 2012

Introduction

This *Tech Note* contains tips to ensure a successful Wonderware Information Server (WIS) installation on the Windows Server 2008 64 and 32-bit operating system.

Application Versions

- Wonderware Information Server (WIS) 4.0 or later
- Microsoft SQL Server 2005 or Microsoft SQL Server 2008 Based on the version of WIS installed
- Microsoft Windows 7 64 and 32-bit
- Internet Explorer 8 and later

Assumptions

This *Tech Note* assumes that you are familiar with the following products:

- Wonderware Information Server (WIS) 4.0 or later.
- Microsoft SQL Server version 2005 or later Installation.

To install these features

1. Click on **Start/Control panel and choose Programs.**
2. Click on **Turn Window features on or off** under **programs and features** section.

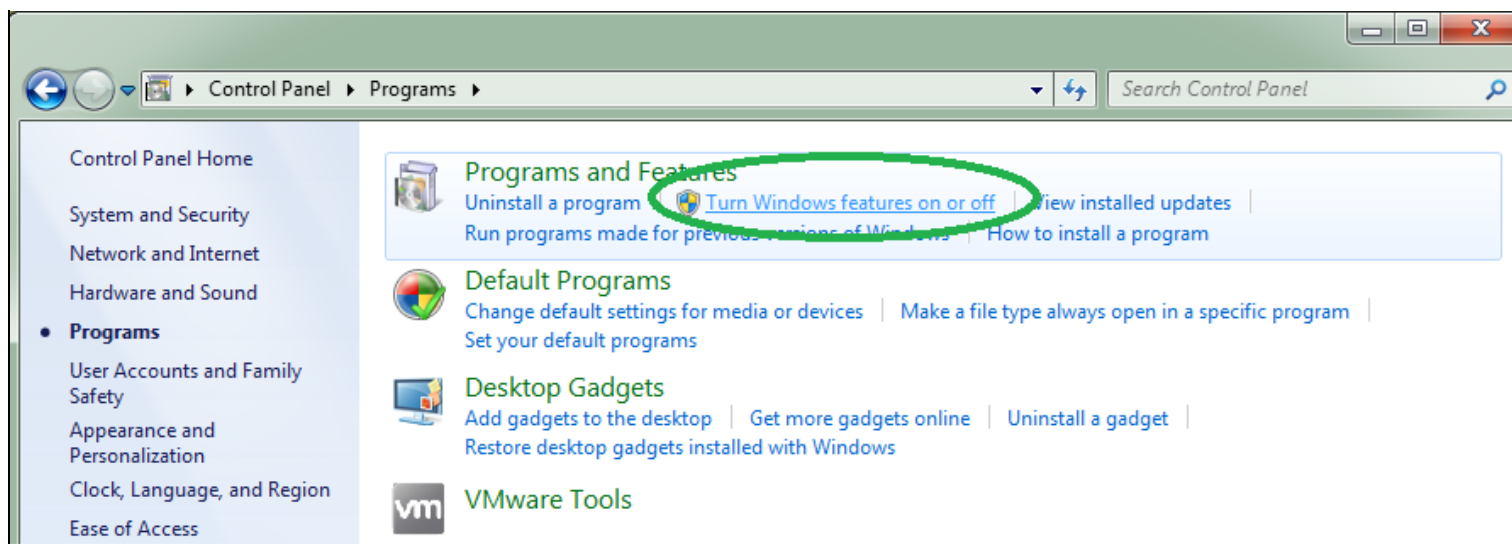


FIGURE 1: TURN WINDOWS FEATURES ON OR OFF

3. Select and open the tree for **Internet Information Services**.
4. Select the following Windows Features to turn on (Figures 2 and 3 below).

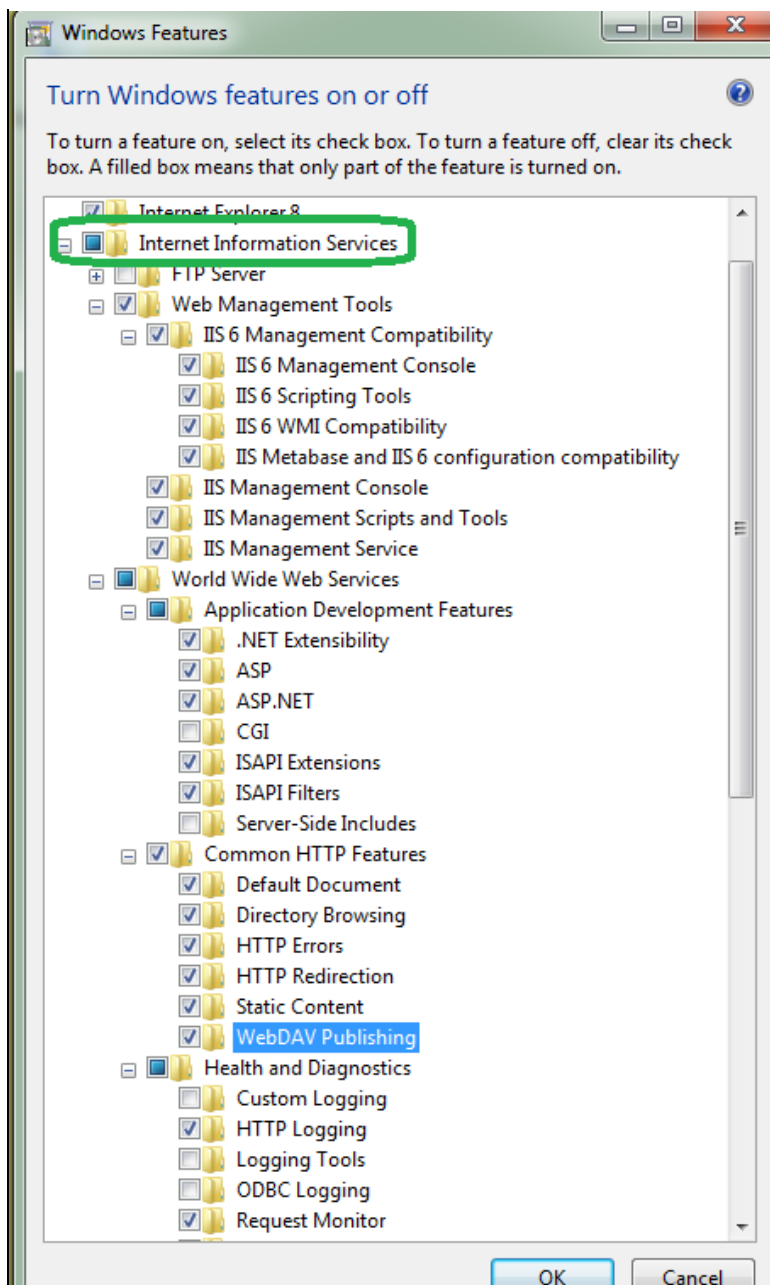


FIGURE 2: SELECT FEATURES

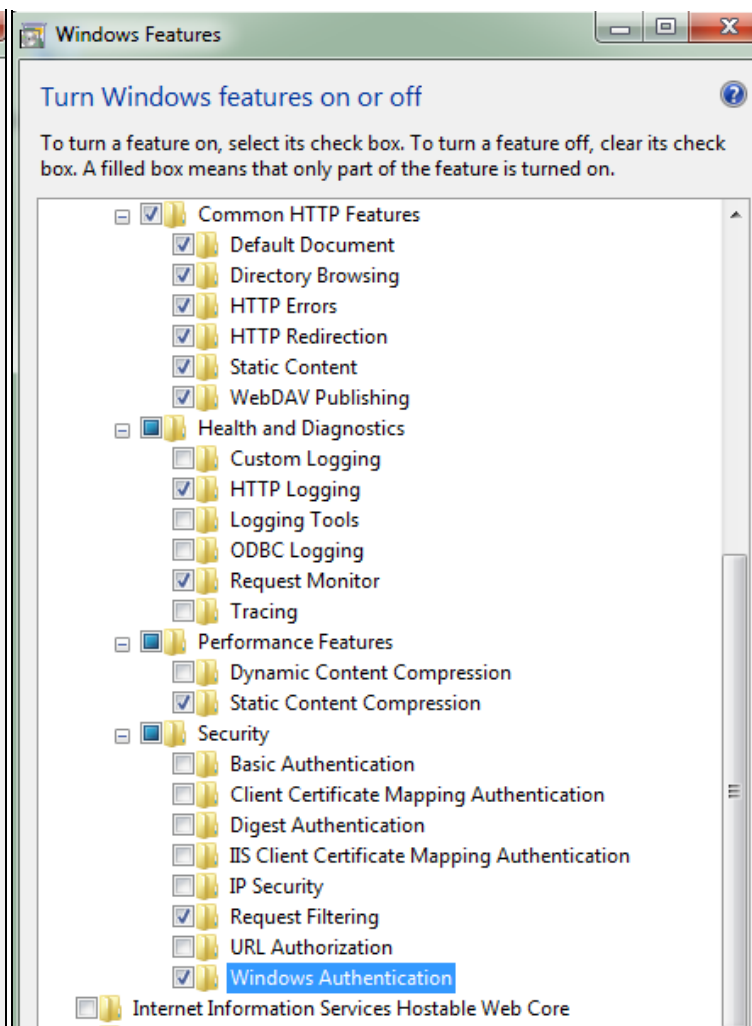


FIGURE 3: SELECT FEATURES

At This point you should have the Following **Features** selected:

Web Server

Common HTTP Features

- Static Content
- Default Document
- Directory Browsing
- HTTP Errors
- HTTP Redirection
- WebDAV Publishing

Application Development

- ASP.NET
- .NET Extensibility
- ASP
- ISAPI Extensions
- ISAPI Filters

Health and Diagnostics

- HTTP Logging
- Request Monitor

Security

- Windows Authentication
- Request Filtering

Performance

- Static Content Compression

Management Tools

- IIS Management Console
- IIS Management Scripts and Tools
- Management Service
- IIS 6 Management Compatibility
 - IIS 6 Metabase Compatibility
 - IIS 6 WMI Compatibility
 - IIS 6 Scripting Tools
 - IIS 6 Management Console

At this point you should have the Web Server (IIS) Roles configured.

1. Click on **Start / Run** and Type **Inetmgr**.

2. Browse the main page of IIS by using the Following URL in Internet Explorer:

http://localhost

3. Click the **WebDAV** icon (Figure 3).

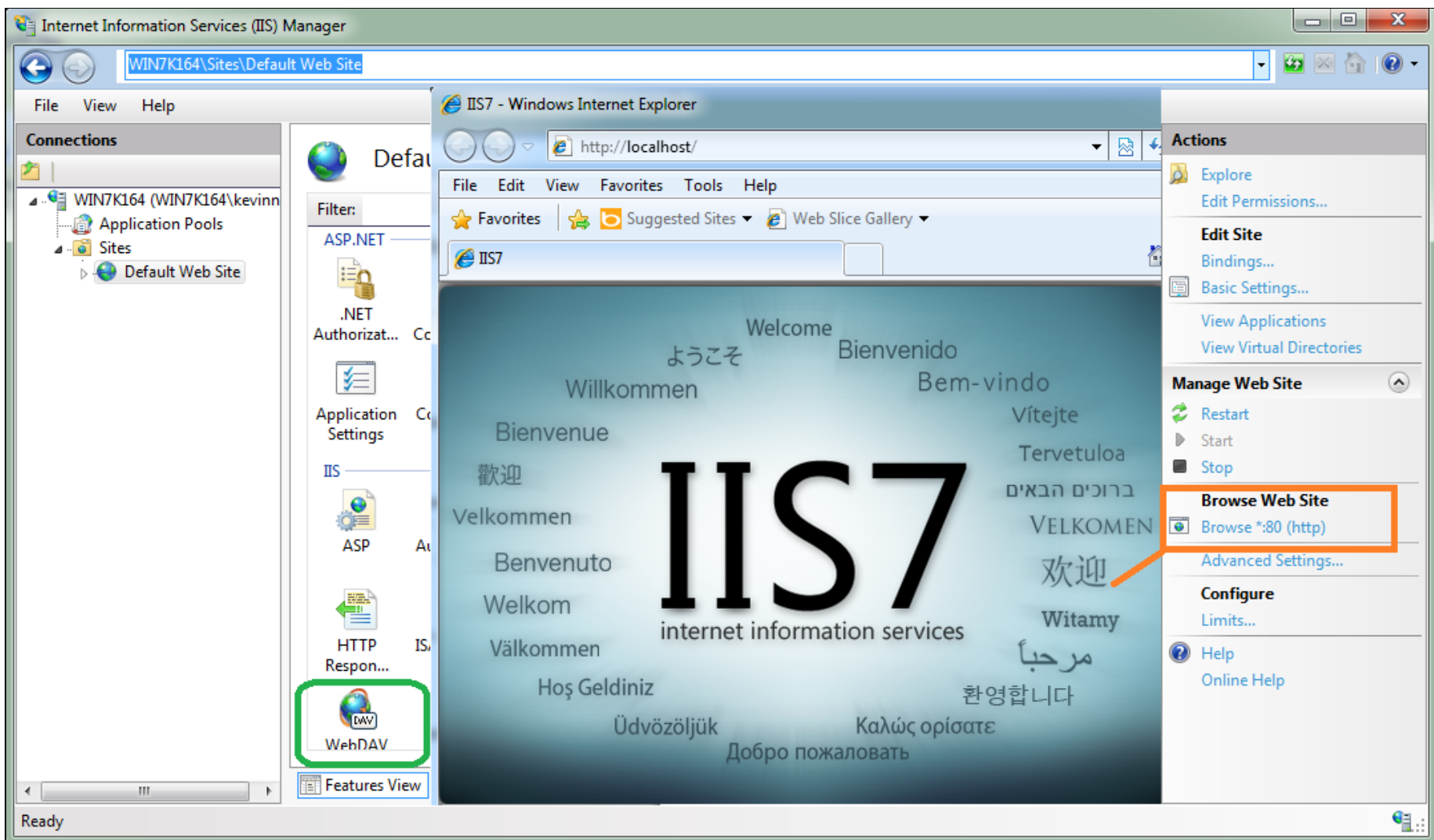


FIGURE 4: INTERNET INFORMATION SERVICES (IIS) MANAGER, DEFAULT WEB SITE

4. Click **Enable WebDAV** on the right panel.

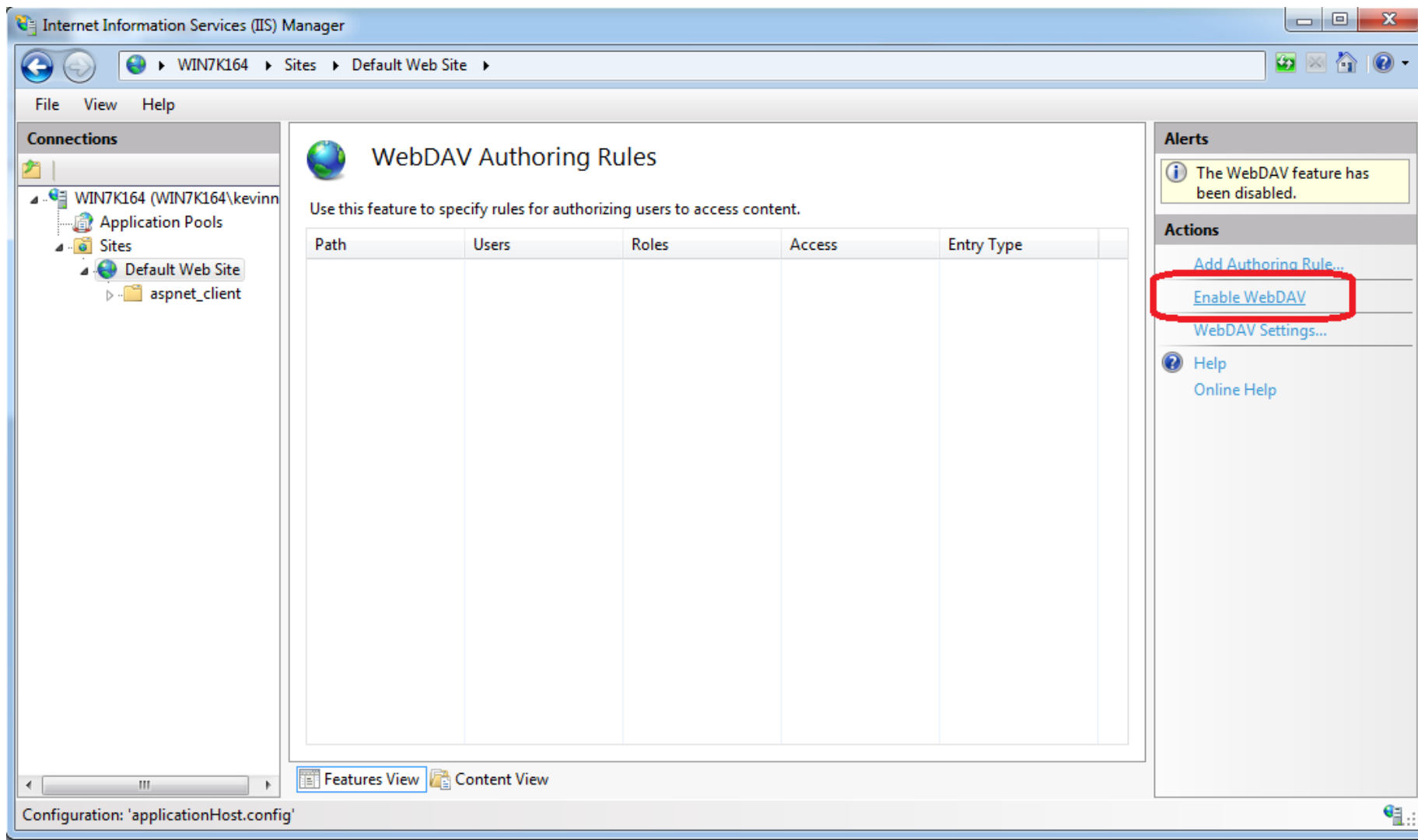


FIGURE 5: ENABLE WEBDAV

To configure Wonderware Information Server

1. Click **Start > All Programs > Wonderware > Common**, and then select **Configurator** from the list.
2. Expand **Wonderware Information Server** and click **Information Server**.
3. Configure the **Database Configuration** and **Application Account** section (Figure 4 below), then click **Configure**.

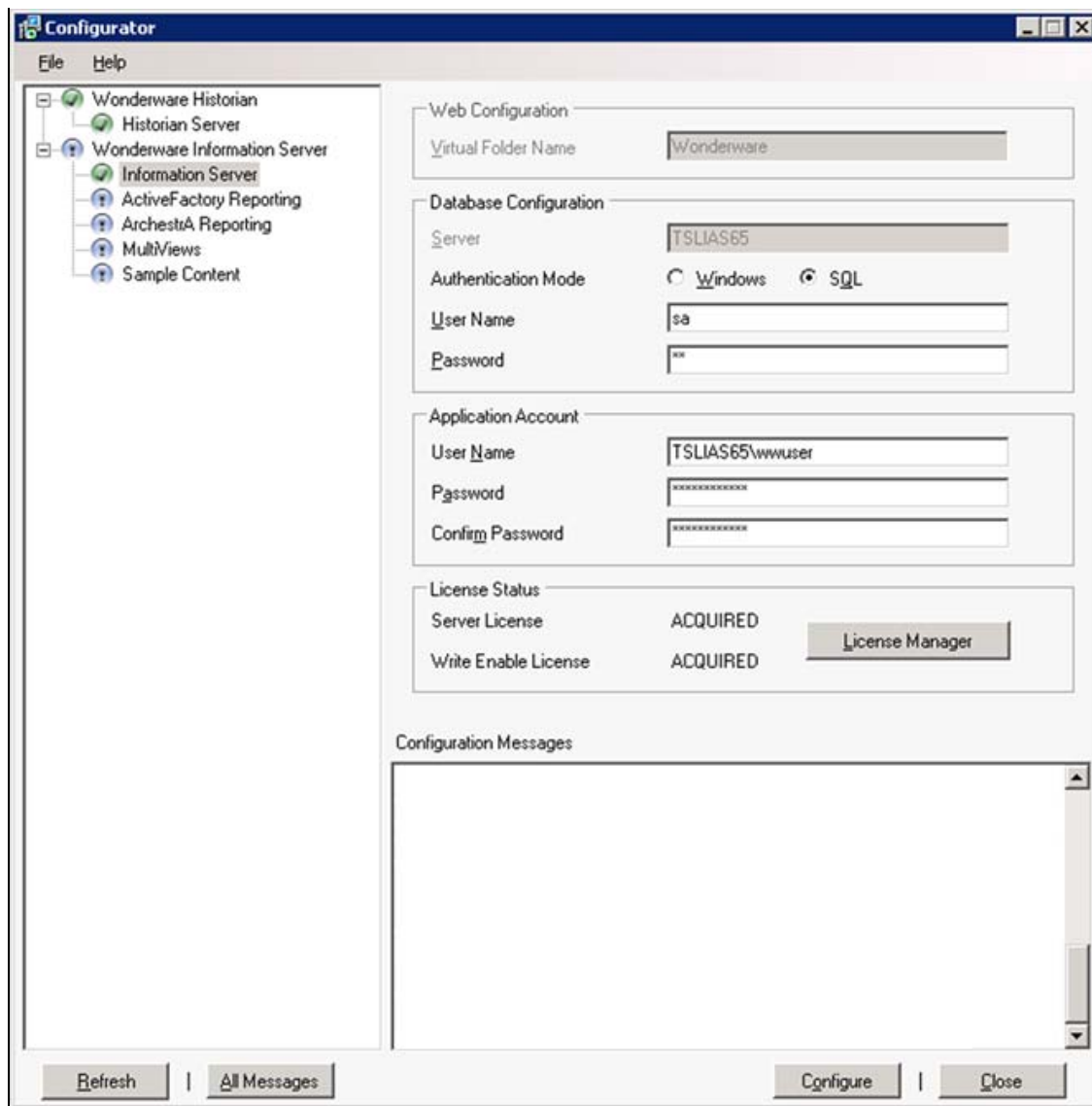


FIGURE 6: WIS CONFIGURATOR

Configurator will check for Required IIS Role Services Installed and may pop a message Like the Following If It doesn't find a required Role Services

4. Double-click the red error message in the Configuration Messages panel to view more details (Figure 7 below).

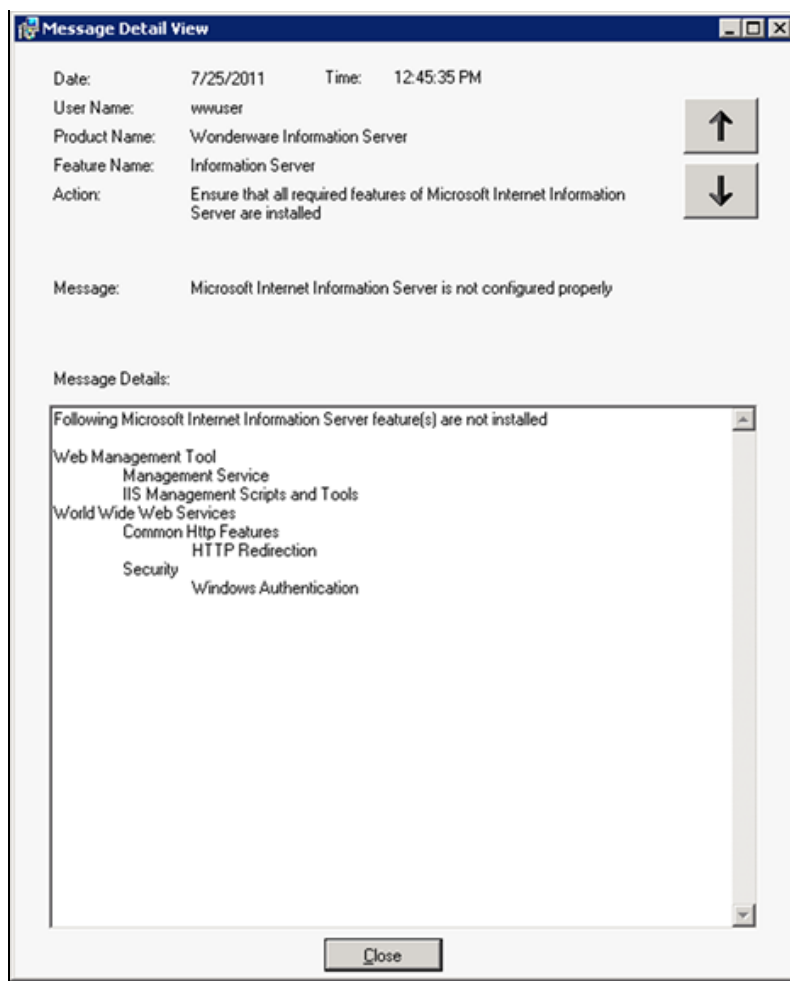


FIGURE 7: CONFIGURATION ERROR DETAILS

Per the message details, the following IIS Role Services are not installed:

- Web Management Tool: Management Service and IIS Management Scripts and Tools
- World Wide Web Services (IIS): Common Http Features HTTP Redirection and Security Windows Authentication.

References

- To configure ActiveFactory Reporting *after* configuring WIS, see [Tech Note 704 Configuring ActiveFactory Reporting from Wonderware Information Server \(WIS\)](#).
- To enable and configure WebDAV see [Tech Note 784 Installing and Enabling the WebDAV Extension Module for Wonderware Information Server \(WIS\)](#).

K. Nourbakhsh, B. Nguyen

Tech Notes are published occasionally by Wonderware Technical Support. Publisher: Invensys Systems, Inc., 26561 Rancho Parkway South, Lake Forest, CA 92630. There is also technical information on our software products at [Wonderware Technical Support](#).

For technical support questions, send an e-mail to wwsupport@invensys.com.

 [Back to top](#)

©2012 Invensys Systems, Inc. All rights reserved. No part of the material protected by this copyright may be reproduced or utilized in any form or by any means, electronic or mechanical, including photocopying, recording, broadcasting, or by any information storage and retrieval system, without permission in writing from Invensys Systems, Inc. [Terms of Use](#).