

[Tech Note 853](#)

Using FSG DDE Client With Excel DDE Server in Windows 7 and Windows 2008

All Tech Notes, Tech Alerts and KBCD documents and software are provided "as is" without warranty of any kind. See the [Terms of Use](#) for more information.

Topic#: 002648

Created: April 2012

Introduction

FactorySuite Gateway's DDE Client is often used to connect Excel with Wonderware client applications such as Industrial Application Server and InTouch.

This *Tech Note* demonstrates connecting the FactorySuite Gateway (FSG) DDE client to Microsoft Excel spreadsheet as a DDE server, under newer MS Operating Systems such as Windows7 or Windows2008.

Application Versions

- FactorySuite Gateway 2.0

Before You Begin

This *Tech Note* uses **Windows Task Manager** to monitor the session IDs that are assigned to each logged in user. The **Session ID** column does not appear in Task Manager by default.

You can add the Session ID column using the following steps:

1. Start Windows Task Manager (right-click the Windows task bar and click **Start Task Manager**).
2. Click the **Processes** tab.
3. Click **View/Select Columns** (Figure 1 below).

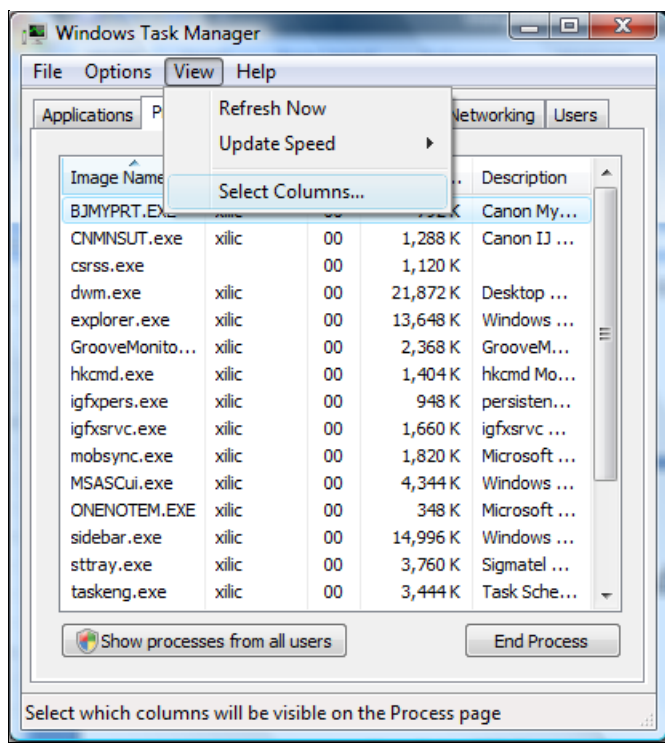


FIGURE 1: VIEW/SELECT COLUMNS

4. The **Select Process Page Column** window appears. Check the **Session ID** option to add the Session ID column to the Task Manager display.

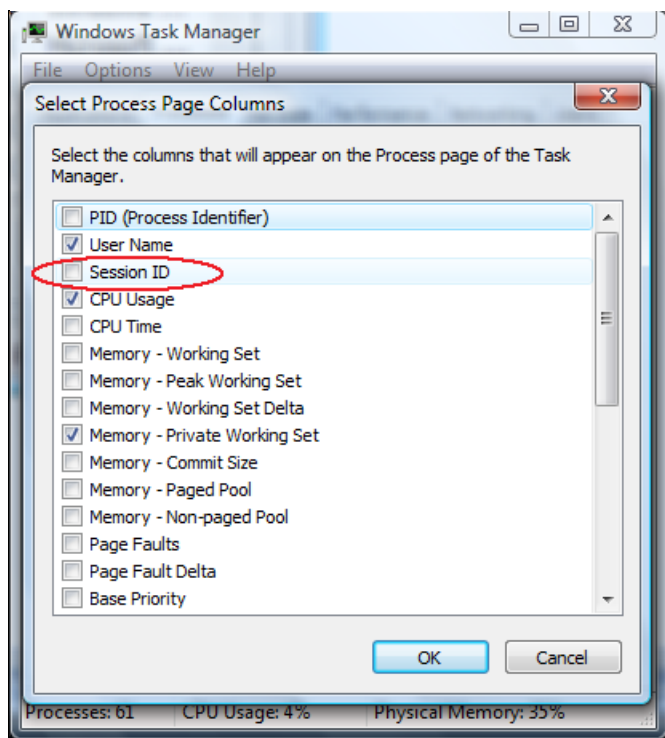


FIGURE 2: ADD SESSION ID COLUMN TO THE PROCESS PAGE DISPLAY

The **Session ID** column now appears in Task Manager (Figure 3 below).

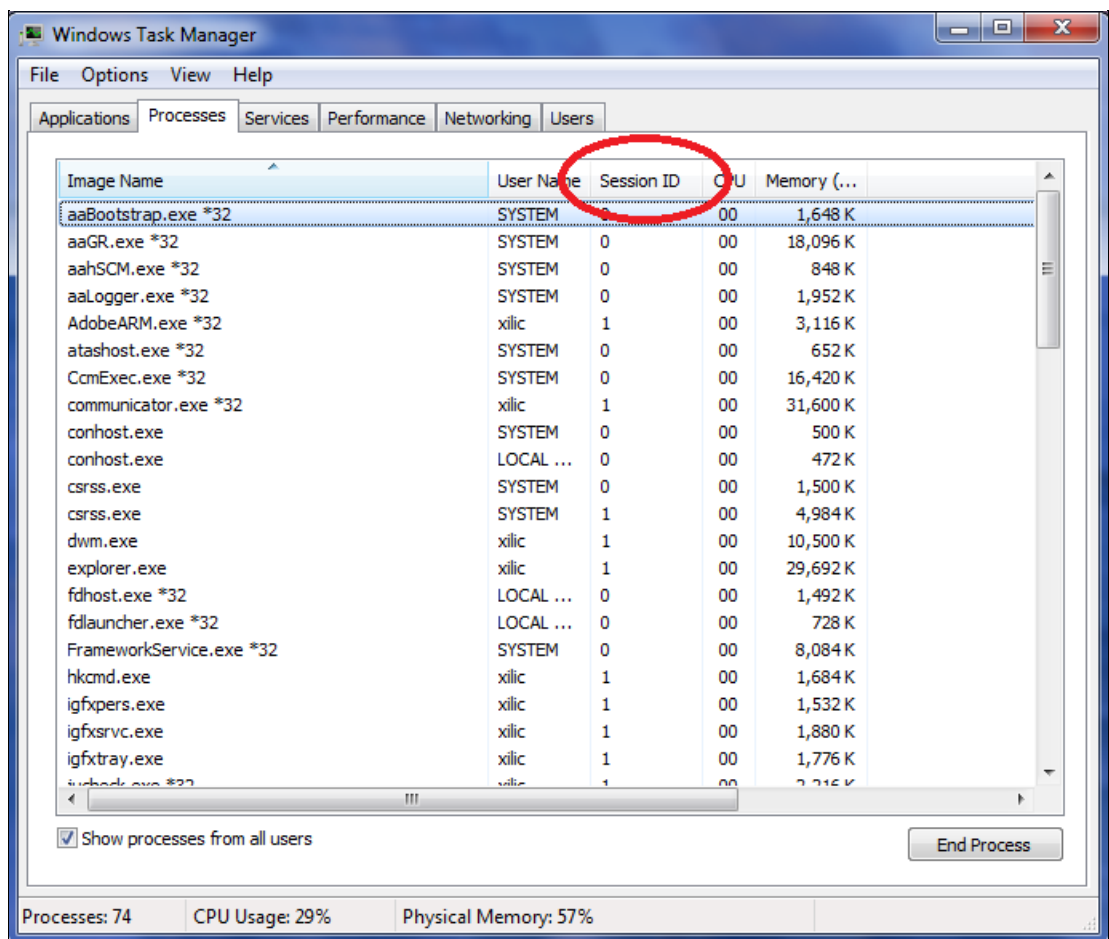


FIGURE 3: SESSION ID COLUMN

Connecting FSGateway to Excel in Windows 2003 or Earlier

In older Windows Operating System such as Windows 2003 Server or prior, getting data from Excel DDE server is fairly easy. You can run both Excel and a DDE client (such as FSGateway DDE Client) as services or as applications in the Console mode, and you can establish the DDE Connection between Excel and FSGateway using DDE protocol.

Figures 4-6 (below) show the connection between FSG and Excel in Windows Task Manager. WWClient is our client application for this demo. Running FSGateway as a service and Excel as an application in Windows 2003 console, both the logged-in user and the System account are running in session ID 0 – the Console session (Figure 4 below).

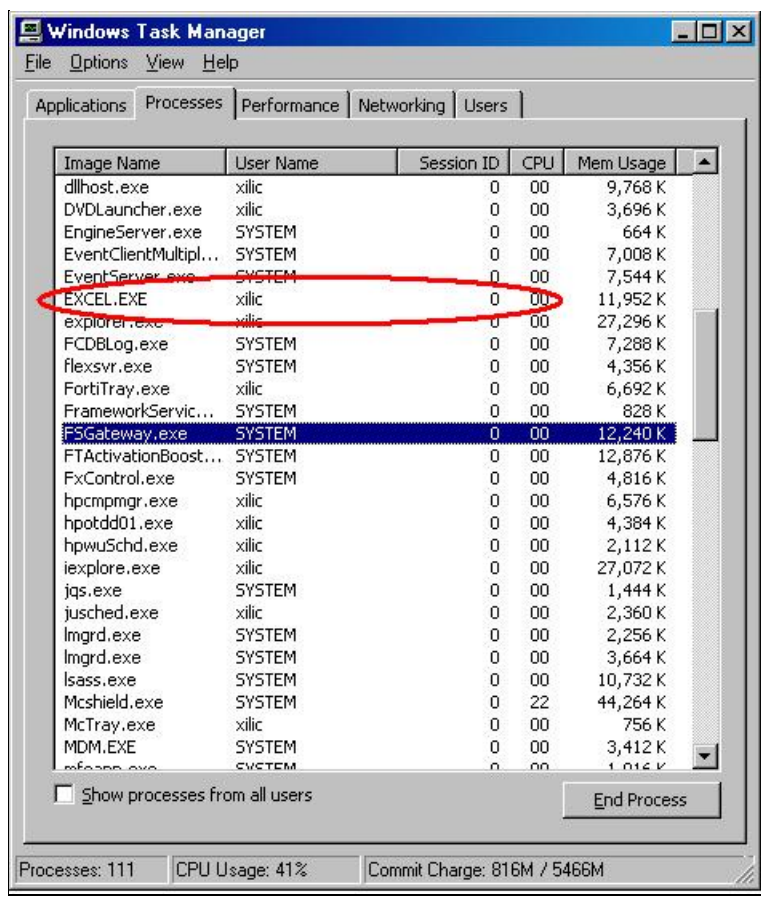


FIGURE 4: SESSION ID IN WINDOWS TASK MANAGER

- Configure FSGateway with the DDE and Group objects. Figure 5 (below) shows the FSGateway Object running as a Service.

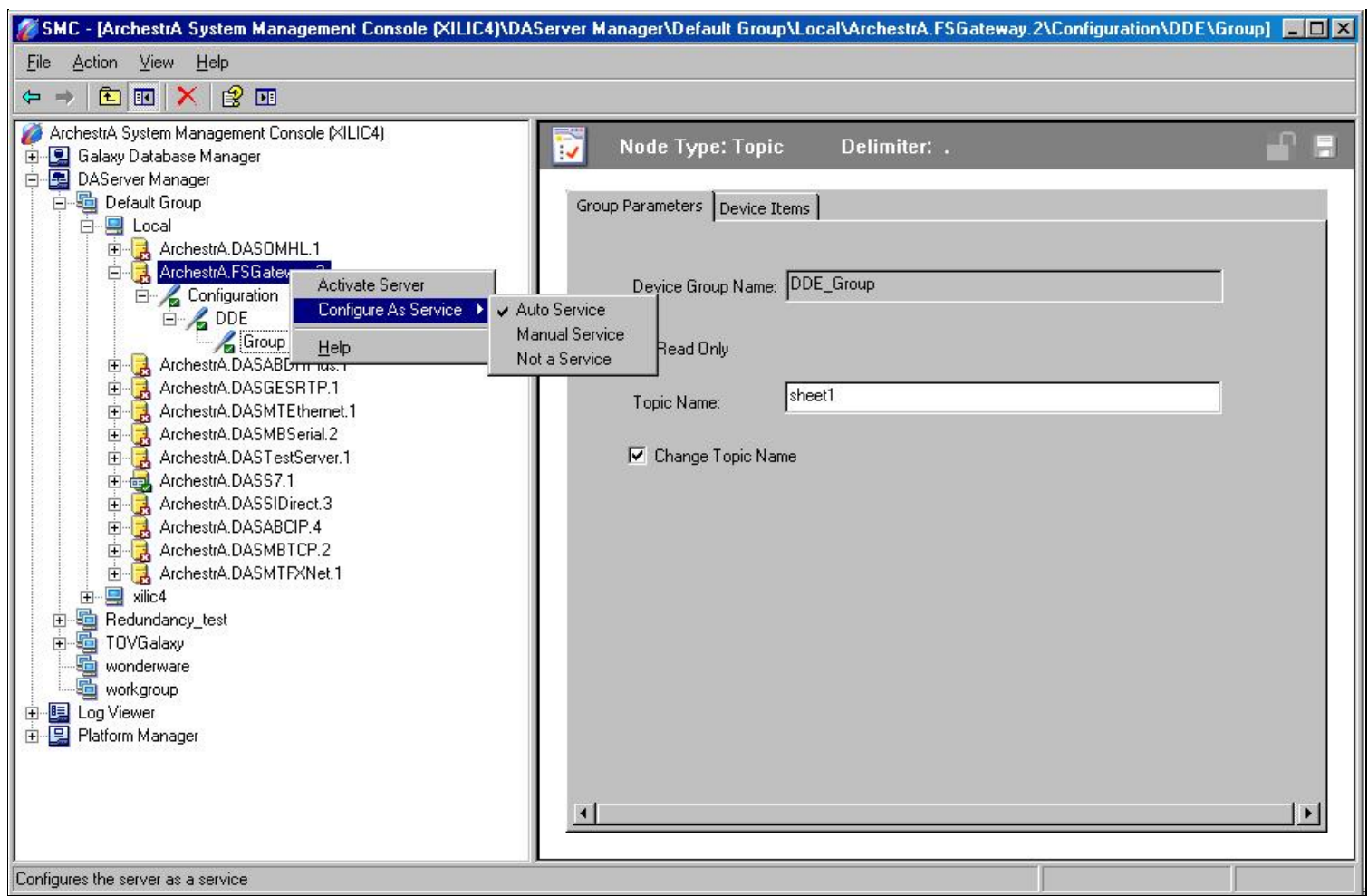


FIGURE 5: FSGATEWAY RUNNING AS A SERVICE

Figure 6 (below) shows the DDE Object configuration parameters pointing to Excel as the DDE Server.

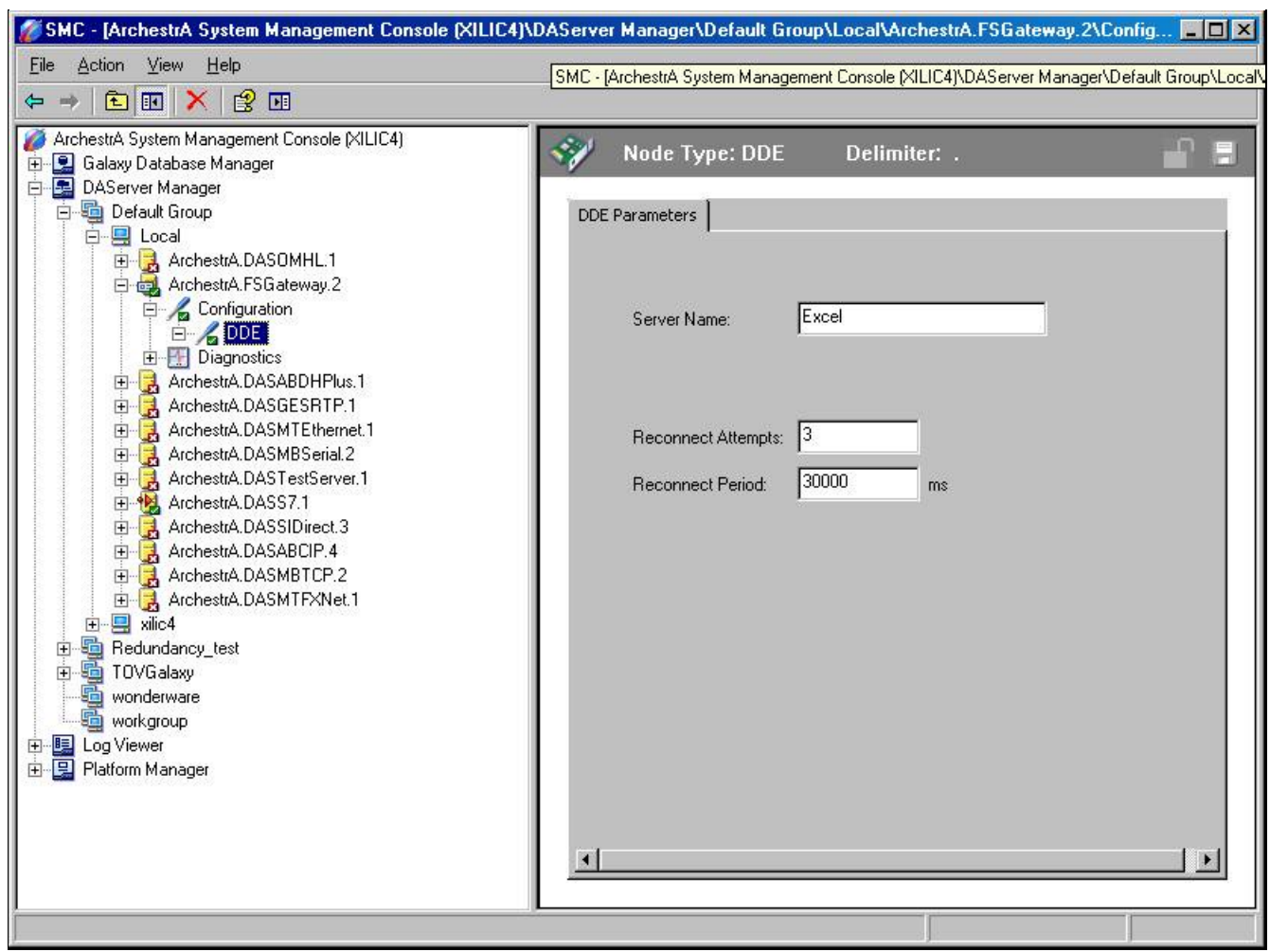


FIGURE 6: EXCEL AND FSGATEWAY IN SAME SESSION

Figure 7 (below) shows the Group Object configuration.

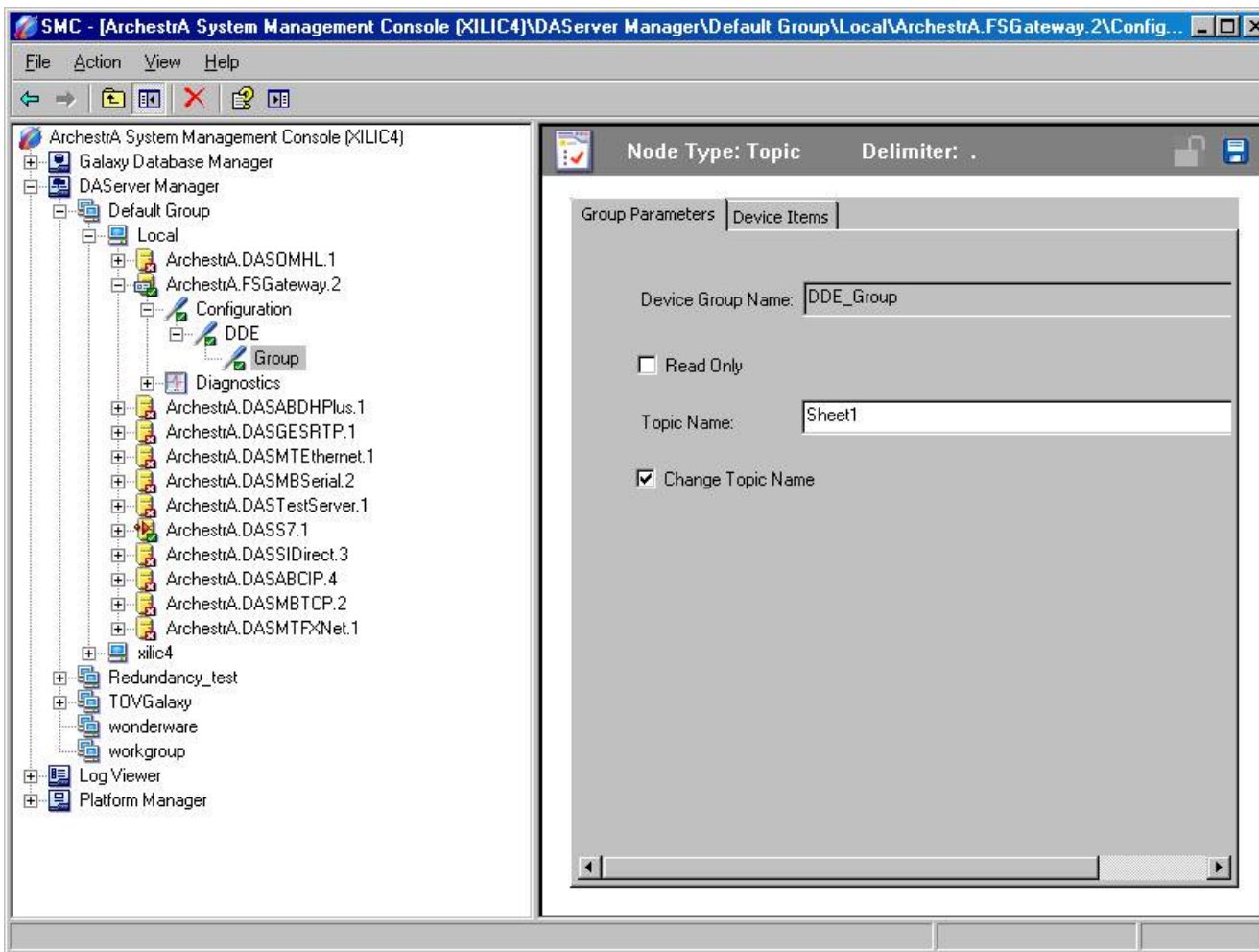


FIGURE 7: GROUP OBJECT CONFIGURATION

Figure 8 (below) shows the WWClient getting Excel updates via the FSGateway DDE Client Configuration.

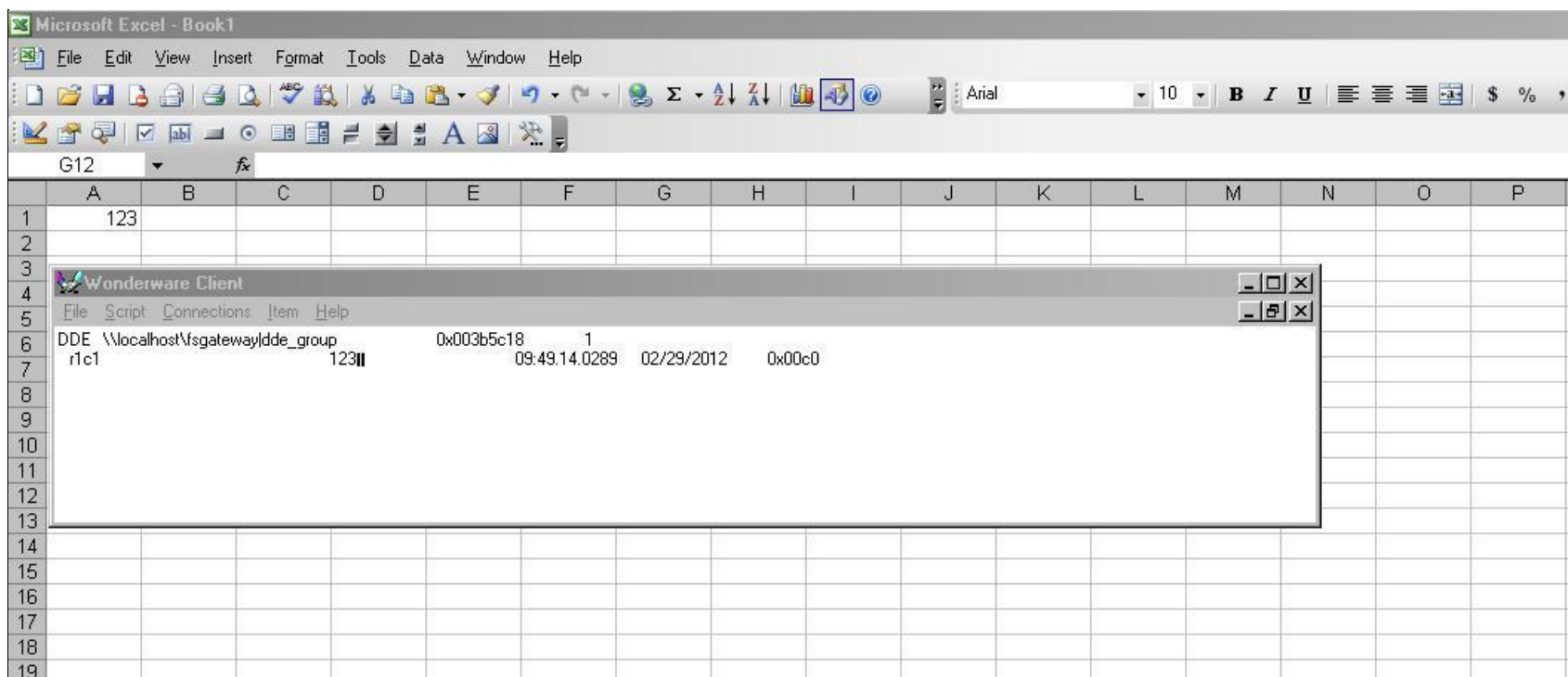


FIGURE 8: DDE CONNECTION TO EXCEL SPREADSHEET

Connecting FSGateway to Excel DB in Windows 7 and Windows 2008

In the newer Windows Operating Systems, the Console Mode is a thing of the past. The newer OS always runs all Services in Session **0**, and each logged-in user is assigned a *different* Session ID.

What this means is that if you are running any program as a service, it is automatically assigned the Session ID of **0**. MS Excel cannot run as service. It runs as an application under the logged in user. Once Excel starts you will see it runs under a different Session ID.

Figure 9 (below) shows Excel and FSGateway running under the same logged in user, but in different Session IDs. Excel runs as an application (not as a service), and FSGateway is running as Service with the Session ID of **0**.

Windows Task Manager

File Options View Help

Applications Processes Services Performance Networking Users

Image Name	User Name	Session ID	CPU	Memory (...)	Threads	Description
csrss.exe	SYSTEM	1	00	3,936 K	10	Client Server Runtime Process
DASAgent.exe *32	xilic	0	00	3,328 K	7	DASAgent Module
dllhost.exe *32	xilic	0	00	3,960 K	5	COM Surrogate
dwm.exe	xilic	1	01	11,112 K	5	Desktop Window Manager
EngineServer.exe	SYSTEM	0	00	400 K	3	McAfee Engine Service
EXCEL.EXE *32	xilic	1	00	7,640 K	8	Microsoft Excel
explorer.exe	xilic	1	06	38,772 K	43	Windows Explorer
explorer.exe	xilic	1	02	12,488 K	23	Windows Explorer
fdhost.exe *32	LOCAL ...	0	00	2,520 K	6	SQL Full Text host
fdlauncher.exe *32	LOCAL ...	0	00	600 K	3	SQL Full-text Filter Daemon Launc...
FrameworkService.exe *32	SYSTEM	0	00	7,336 K	34	Framework Service
FSGateway.exe *32	xilic	0	00	5,004 K	21	ServerExe Module
hkcmd.exe	xilic	1	00	1,256 K	3	hkcmd Module
ieexplore.exe *32	xilic	1	00	32,028 K	22	Internet Explorer
ieexplore.exe *32	xilic	1	00	5,968 K	10	Internet Explorer
igfxpers.exe	xilic	1	00	1,136 K	3	persistence Module

Show processes from all users

End Process

Processes: 99 CPU Usage: 43% Physical Memory: 61%

FIGURE 9: APPLICATION AND SERVICE UNDER THE SAME LOGGED-IN USER AND DIFFERENT SESSION IDs

Figure 10 (below) shows the FSGateway DDE Client Object configurations to the Excel as a DDE Server on the Windows7 Operating System.

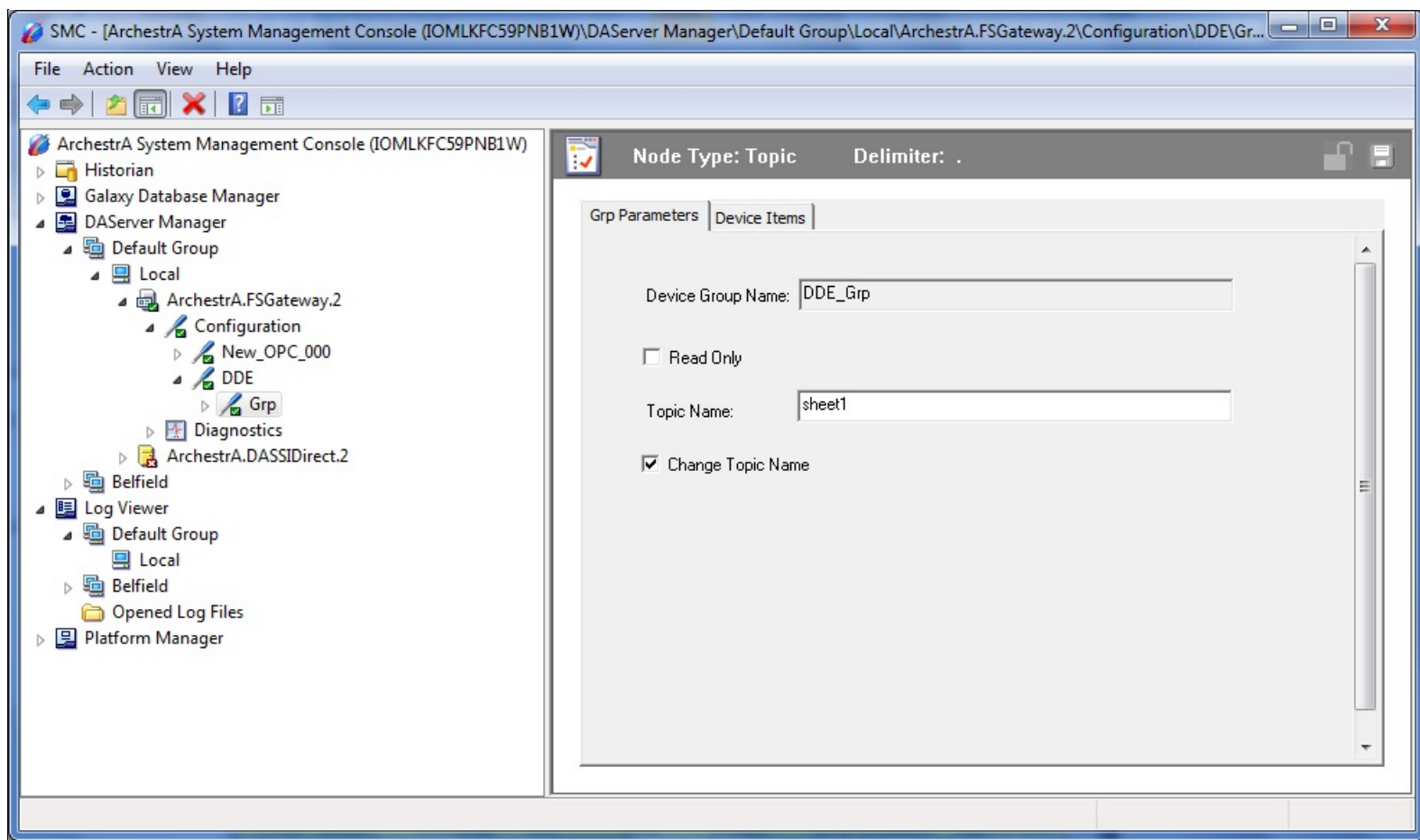


FIGURE 10: OBJECT CONFIGURATION FOR DDE

In newer operating systems, running Excel and FSGateway in two different sessions is equivalent to running in a networked environment. This requires NetDDE. However, NetDDE is obsolete, and no longer available. The WWCleint application cannot make a connection between the FSGateway DDE client and Excel in this demo because NetDDE is not present.

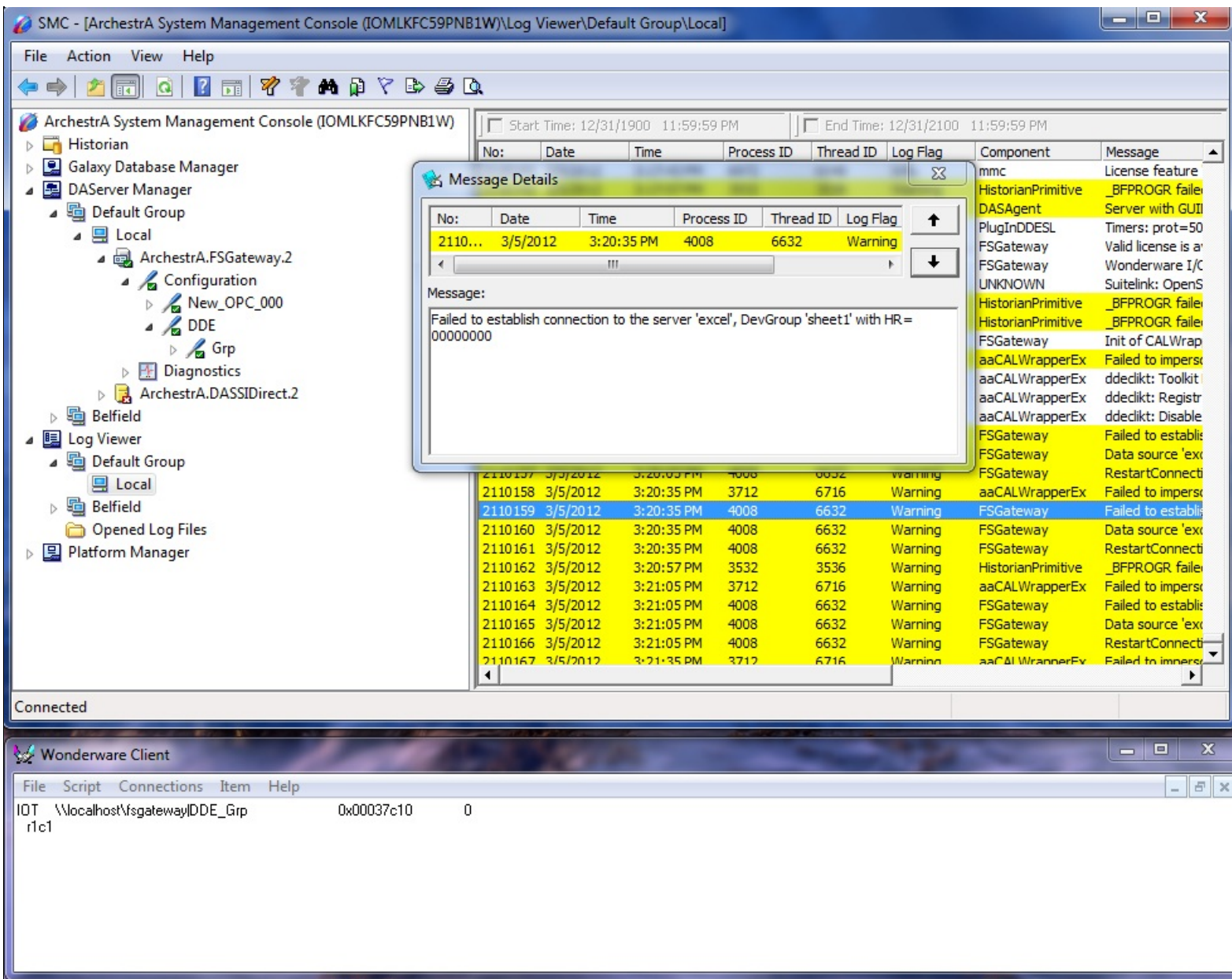


FIGURE 11: NO COMMUNICATIONS AVAILABLE ACROSS SESSIONS

Resolution

To resolve this problem, start FSGateway from the local installation folder. This starts FSGateway as an Application.

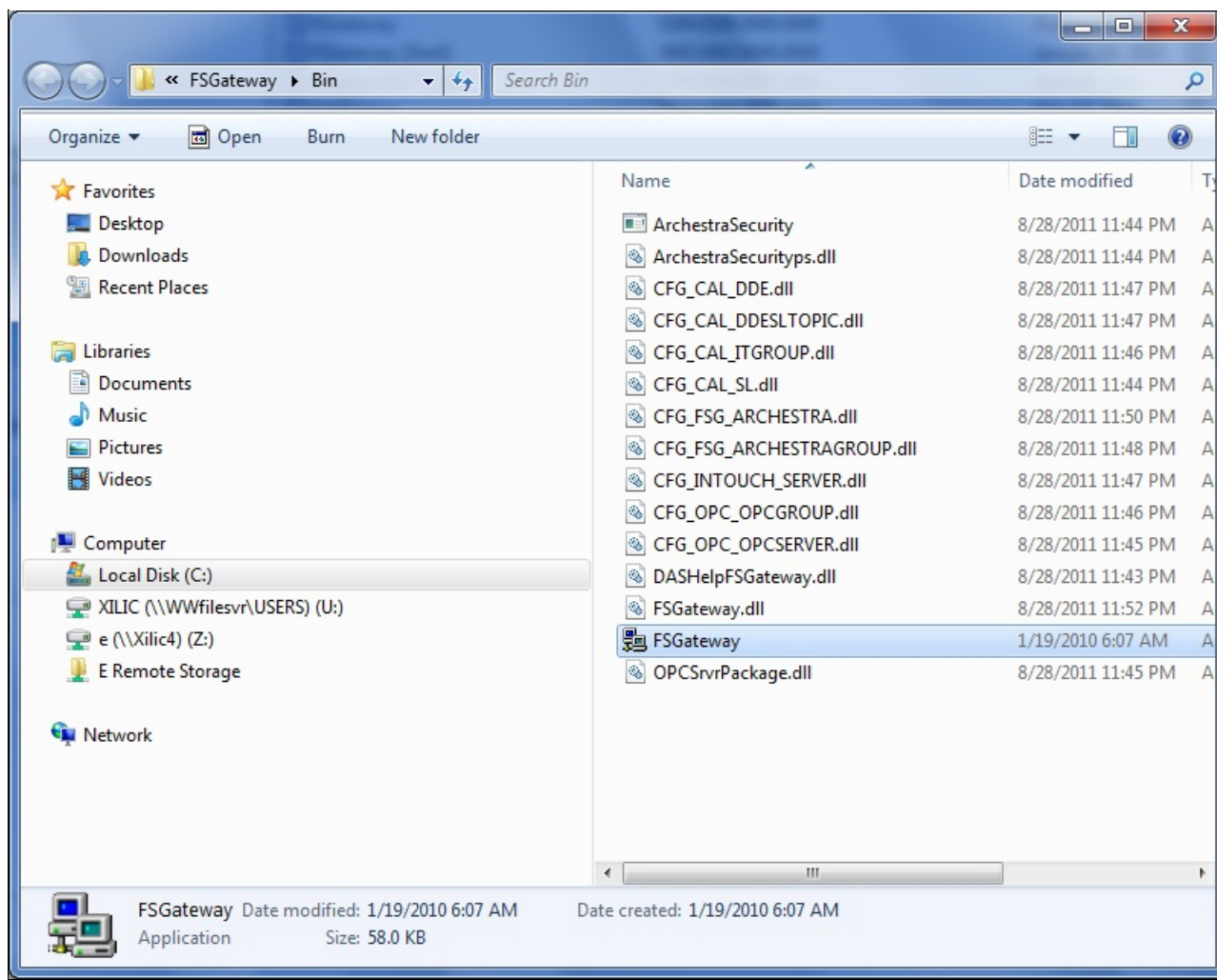


FIGURE 12: RUN FSGATEWAY AS AN APPLICATION, FROM THE LOCAL INSTALLATION FOLDER

When FSGateway is showing **Activated**, return to the Task Manager and check the Session ID. You will see FSGateway and Excel running under the same Session ID.

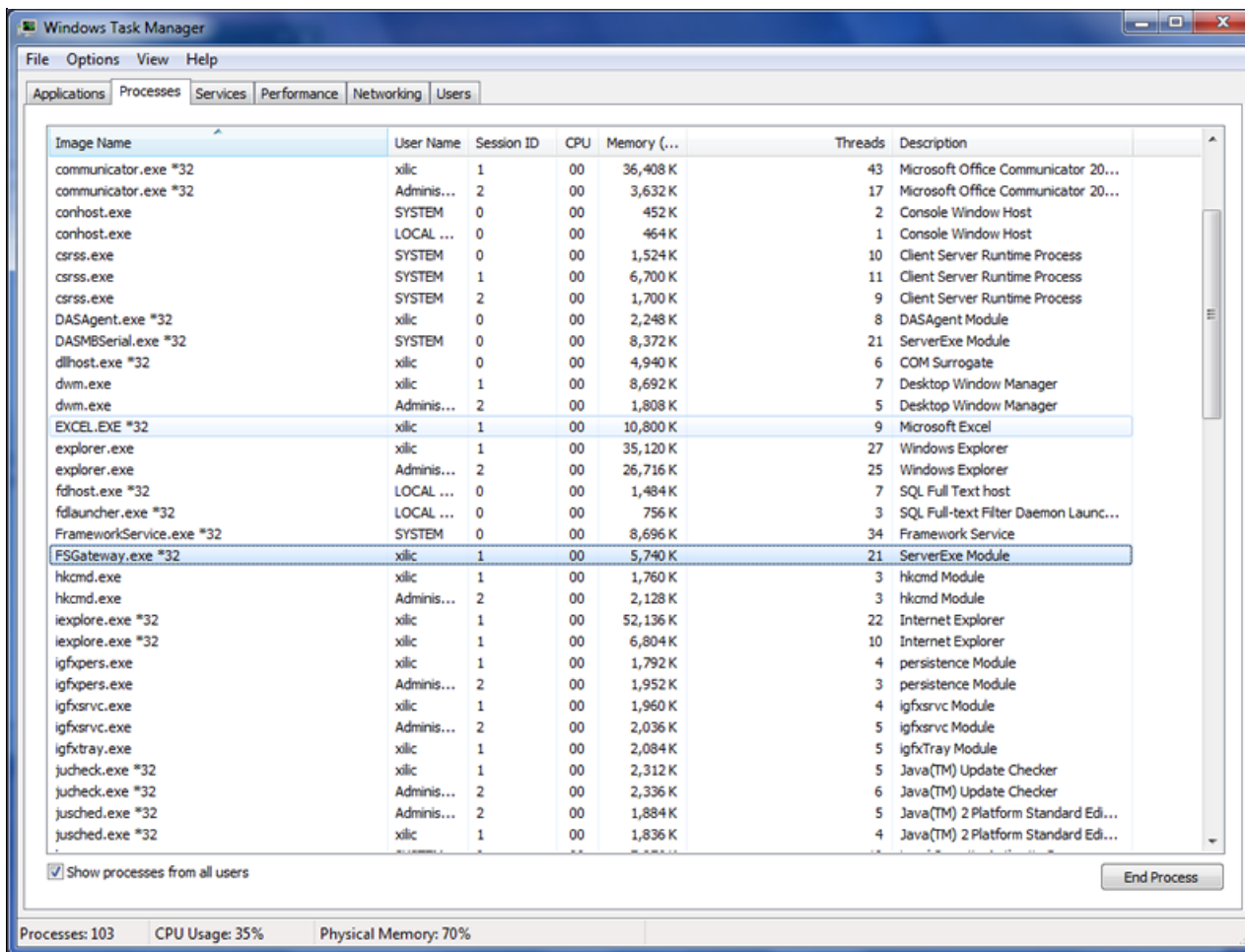


FIGURE 13: FSGATEWAY AND EXCEL RUNNING IN SESSION 1

You can run FSGateway as a local application in different ways (such as from Task Manager).

After both Excel and FSGateway are running in the same session, check and make sure you are still using the same configuration showing in Figure 10 (above). WWClient now receives a proper data update (Figure 14 below).



FIGURE 14: DATA UPDATE IS SUCCESSFUL ON SESSION 1

Final Note

Both Excel and FSGateway must run as applications *under the same user login* to communicate. If you run Excel and FSGateway under different user accounts, they will run in different Session IDs and the communication fails (Figure 15 below).

Image Name	User Name	Session ID	CPU	Memory (...)	Description
aaBootstrap.exe *32	SYSTEM	0	00	1,648 K	Bootstrap...
aaGR.exe *32	SYSTEM	0	00	17,856 K	Galaxy R...
aahMMDC.exe *32	xllic	1	00	1,076 K	ArchestrA...
aahSCM.exe *32	SYSTEM	0	00	924 K	ArchestrA...
aalLogger.exe *32	SYSTEM	0	00	2,272 K	aalLogger ...
AdobeARM.exe *32	xllic	1	00	3,160 K	Adobe Re...
atashost.exe *32	SYSTEM	0	00	684 K	WebEx H...
audiodg.exe	LOCAL SERVICE	0	00	10,080 K	Windows ...
ComExec.exe *32	SYSTEM	0	00	16,124 K	COM Exec...
communicator.exe *32	xllic	1	00	36,152 K	Microsoft ...
communicator.exe *32	Administrator	2	00	3,652 K	Microsoft ...
conhost.exe	SYSTEM	0	00	452 K	Console ...
conhost.exe	LOCAL SERVICE	0	00	464 K	Console ...
csrss.exe	SYSTEM	0	00	1,520 K	Client Ser...
csrss.exe	SYSTEM	1	00	1,568 K	Client Ser...
csrss.exe	SYSTEM	2	00	6,816 K	Client Ser...
DASAgent.exe *32	xllic	0	00	2,196 K	DASAgen...
DASMSerial.exe *32	SYSTEM	0	00	8,372 K	ServerEx...
dllhost.exe *32	xllic	0	00	4,604 K	COM Surr...
dwm.exe	xllic	1	00	2,064 K	Desktop ...
dwm.exe	Administrator	2	00	8,584 K	Desktop ...
EXCEL.EXE *32	xllic	1	00	9,888 K	Microsoft ...
explorer.exe	xllic	1	00	34,604 K	Windows ...
explorer.exe	Administrator	2	00	23,560 K	Windows ...
fdhost.exe *32	LOCAL SERVICE	0	00	1,488 K	SQL Full T...
fdlauncher.exe *32	LOCAL SERVICE	0	00	756 K	SQL Full-t...
FrameworkService.exe *32	SYSTEM	0	00	5,692 K	Framewor...
FSGateway.exe *32	Administrator	2	00	5,732 K	ServerEx...
hkcmd.exe	xllic	1	00	1,760 K	hkcmd Mo...
hkcmd.exe	Administrator	2	00	2,128 K	hkcmd Mo...
ieexplore.exe *32	xllic	1	00	52,140 K	Internet ...
ieexplore.exe *32	xllic	1	00	6,700 K	Internet ...
igfxpers.exe	xllic	1	00	1,772 K	persisten...
igfxpers.exe	Administrator	2	00	1,988 K	persisten...
igfxsrvc.exe	xllic	1	00	1,976 K	igfxsrvc ...
informer.exe	Administrator	2	00	2,016 K	informer...

Processes: 100 CPU Usage: 35% Physical Memory: 67%

FIGURE 15: EXCEL AND FSGATEWAY RUNNING IN DIFFERENT LOGINS/DIFFERENT SESSIONS: COMMUNICATION FAILS

A. Chaque

Tech Notes are published occasionally by Wonderware Technical Support. Publisher: Invensys Systems, Inc., 26561 Rancho Parkway South, Lake Forest, CA 92630. There is also technical information on our software products at [Wonderware Technical Support](#).

For technical support questions, send an e-mail to wwsupport@invensys.com.

[Back to top](#)

©2012 Invensys Systems, Inc. All rights reserved. No part of the material protected by this copyright may be reproduced or utilized in any form or by any means, electronic or mechanical, including photocopying, recording, broadcasting, or by any information storage and retrieval system, without permission in writing from Invensys Systems, Inc. [Terms of Use](#).