

[Tech Note 920](#)

Resolving Disabled ActiveFactory Reporting Website for Wonderware System Platform R2

All Tech Notes, Tech Alerts and KBCD documents and software are provided "as is" without warranty of any kind. See the [Terms of Use](#) for more information.

Topic#: 002733

Created: January 2013

Introduction

In order to configure Wonderware ActiveFactory Reporting Website (AFRWS) to work with Wonderware Information Server (WIS), it is necessary to set up a data source so the website can access data from a Historian Server. The data source is shared by different WIS components such as ActiveFactory reports, TableWeaver, Factory Alarms, and ArcestrA Reporting. This allows the user to have a single data source and use it in multiple components.

However, for System Platform 2012 R2, if you already configured the data source using the WIS portal, can encounter an issue where the Historian Data Source option is disabled and the following error appears (Figure 1 below).

Configured datasource does not have Shared DataSource Definition. An error occurred while initializing the ActiveFactory Reporting feature.

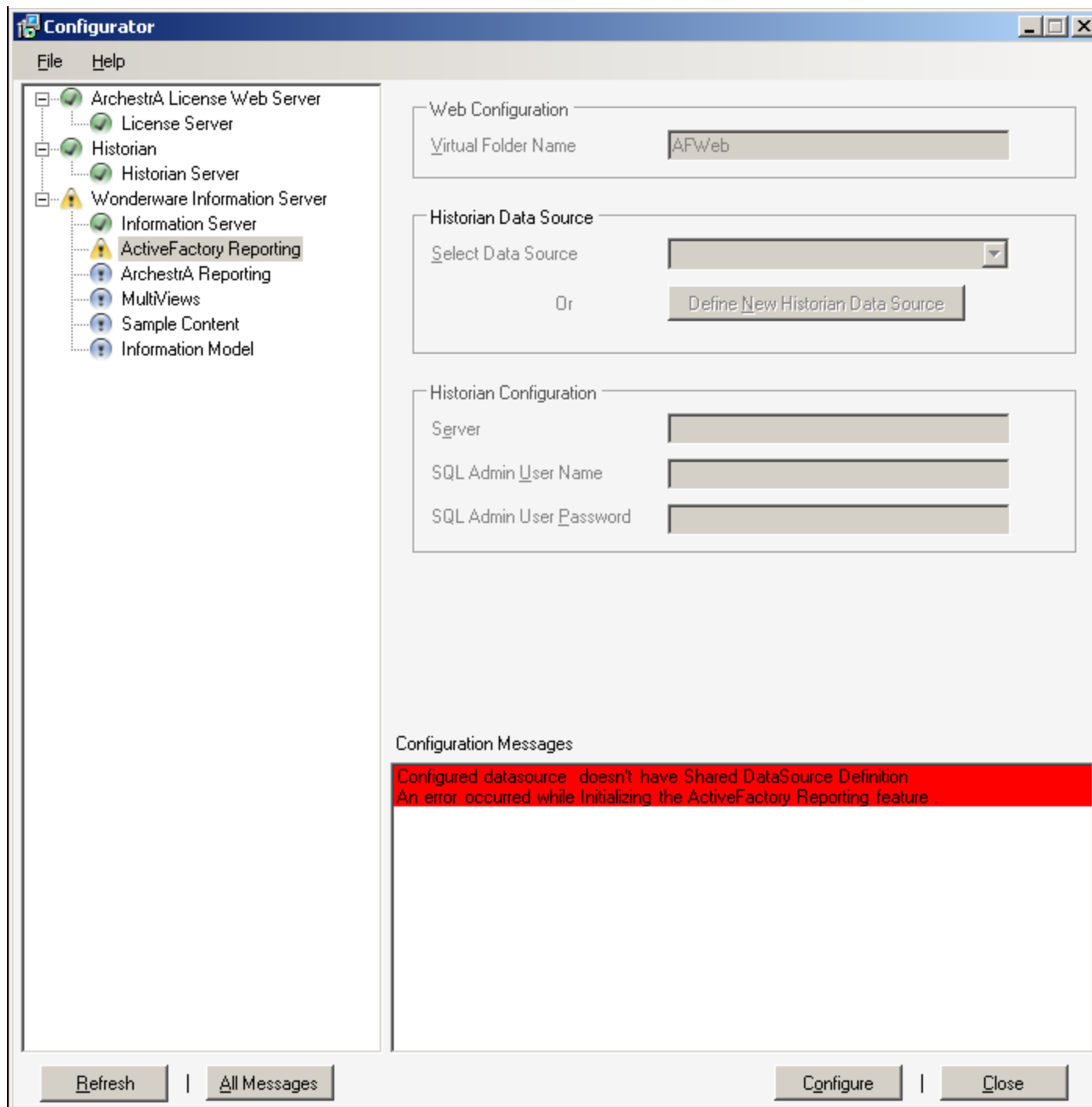


FIGURE 1: DATASOURCE ERROR

This *Tech Note* provides step-by-step procedures to resolve the issue with ActiveFactory Reporting in System Platform 2012 R2 so you

can use the ActiveFactory Reporting Website (AFRWS) components such as Reports, Trend and Query in WIS to access data from a Historian Server.

Application Versions

- Wonderware Information Server (WIS) 5.0
- Wonderware Historian Server 10.0 SP1 P01 or 11.0
- Microsoft SQL Server 2008 R2 SP1 or SP3
- Microsoft SQL Server 2012

Acronyms

- AFRWS: ActiveFactory Reporting Website.
- WIS: Wonderware Information Server (used together with AFRWS).

Assumptions

This Tech Note assumes that you are familiar with the following products:

- Wonderware Historian Server v10.0 or later.
- Wonderware Historian Client v10.0 or later.
- Wonderware Information Server (WIS) version 5.0 or later.
- Microsoft SQL Server 2008 or SQL Server 2012

Procedures

1. If you have any Wonderware components installed on this system (i.e. Historian Server, InTouch, etc.), stop or shut them down.
2. Click Start and type **appwiz.cpl**. The **Uninstall or change a program** window appears.
3. Right-click on **Wonderware Information Server 2012R2** and click **Uninstall/Change**.
4. The ArchestrA System Platform 2012 R2 Installation appears. Select Modify then Next.

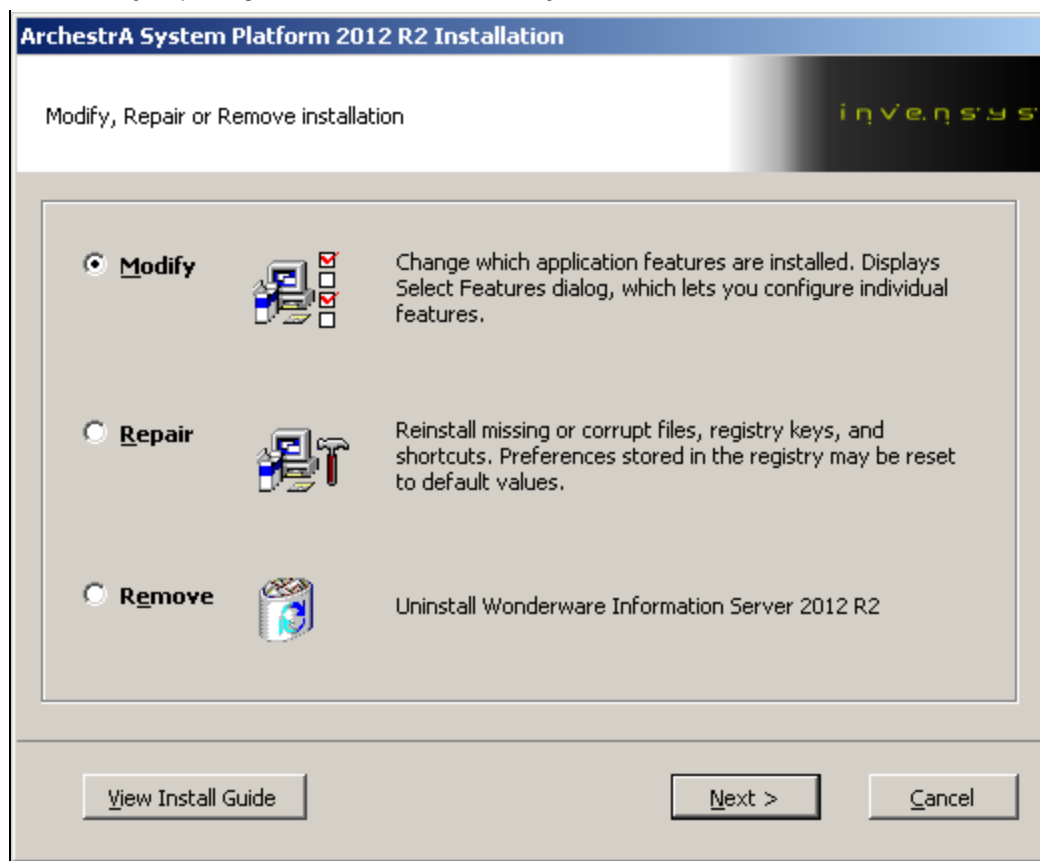


FIGURE 2: MODIFY THE ARCHESTRA SYSTEM PLATFORM INSTALLATION

5. Uncheck the **ActiveFactory Reporting** component, and click **Next** (Figure 3 below).

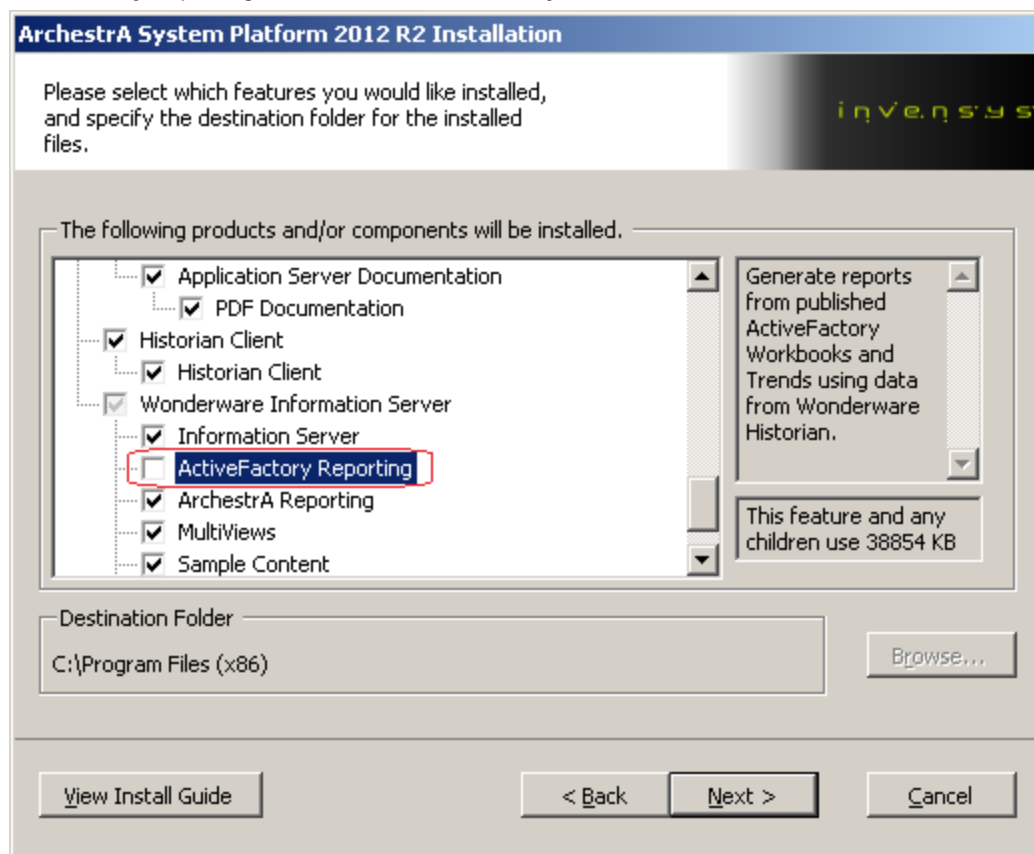


FIGURE 3: UNCHECK THE ACTIVEFACTORY REPORTING OPTION

6. Click **Modify** (Figure 4 below).

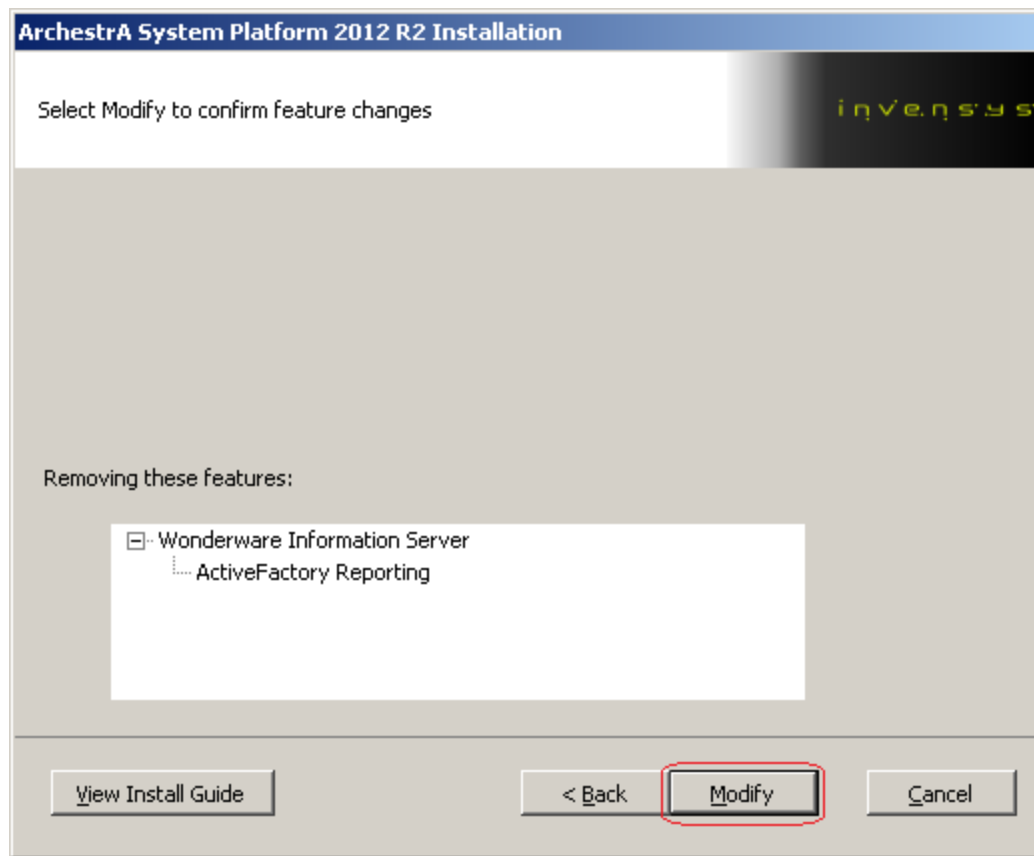


FIGURE 4: MODIFY ACTIVEFACTORY REPORTING

7. Use the **Historian Uninstallation process** Window to see which services to stop (stop the services using the Historian SMC and/or Task Manager) then click **Next**.

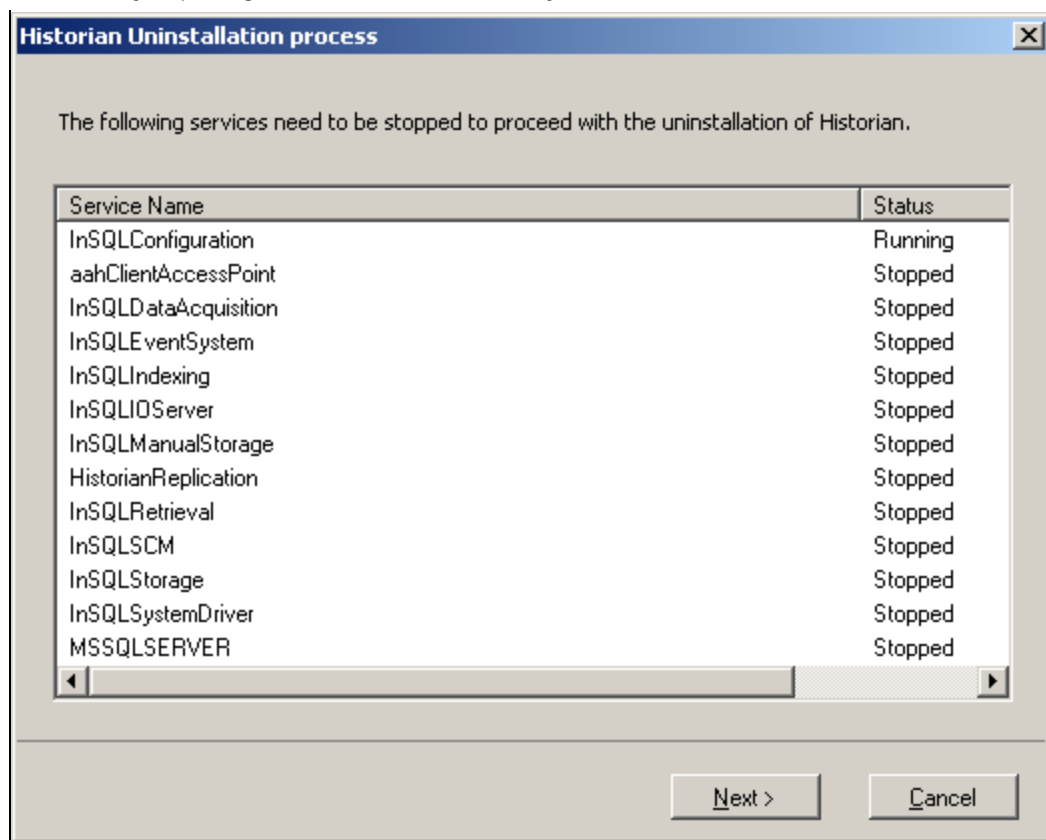


FIGURE 5: STOP ALL LISTED SERVICES

The installation will perform the uninstallation of ActiveFactory Reporting and updating the system.

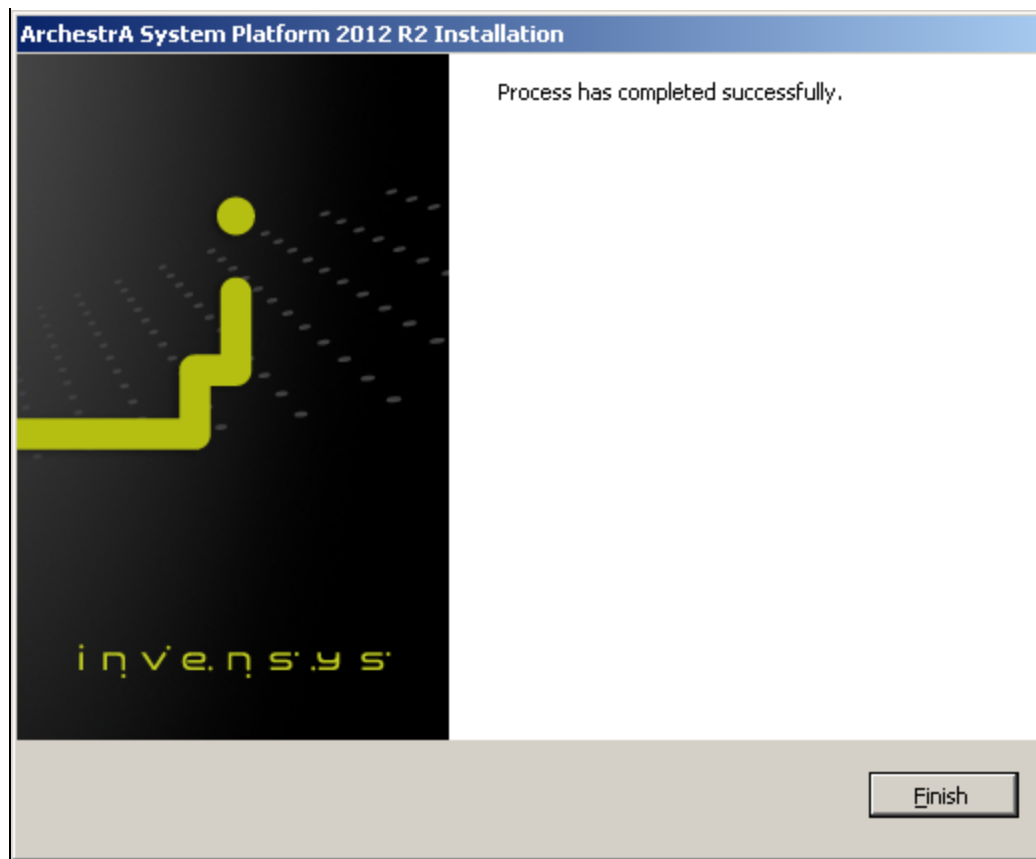


FIGURE 6: INSTALLATION PROCESS SUCCESS

8. Click **Finish**.
9. Repeat steps 2, 3, and 4 above to re-install System Platform 2012 R2.
10. Make sure to enable the ActiveFactory Reporting option this time, then click **Next** twice.

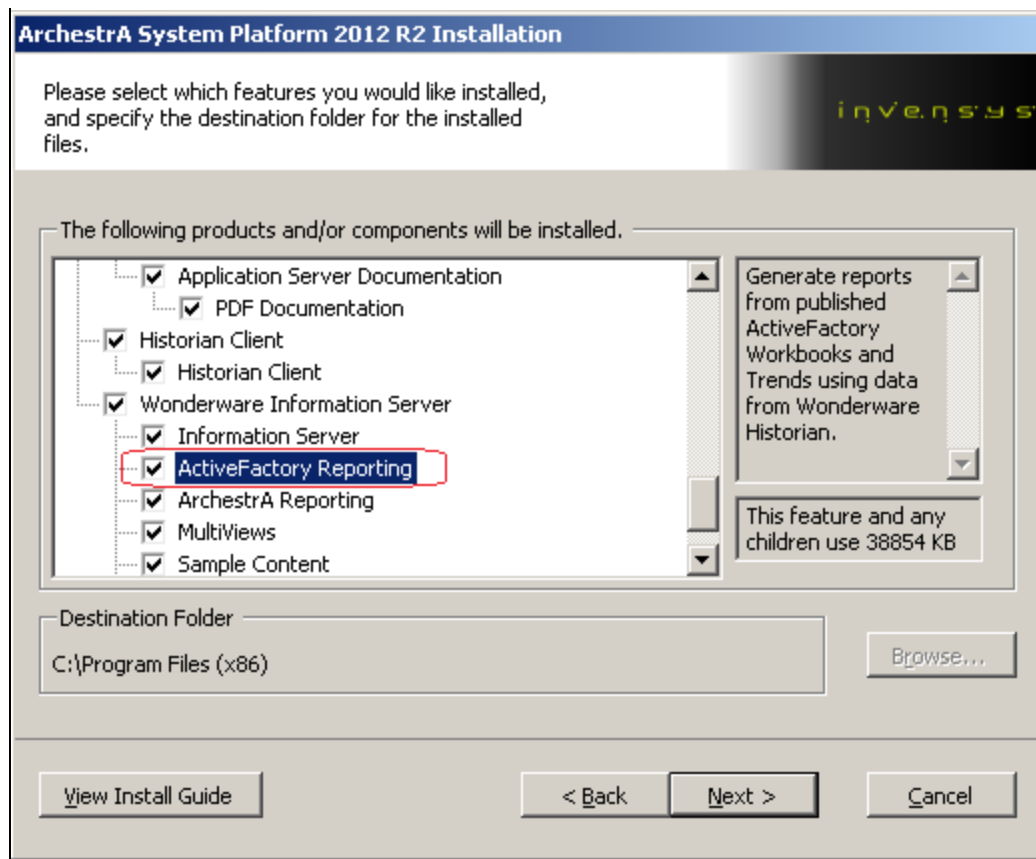


FIGURE 7: REINSTALL WITH ACTIVEFACTORY REPORTING

The ArchestrA System Platform 2012 R2 Installation should show the ActiveFactory Reporting feature it is adding.

11. Click **Modify** to proceed (Figure 8 below).

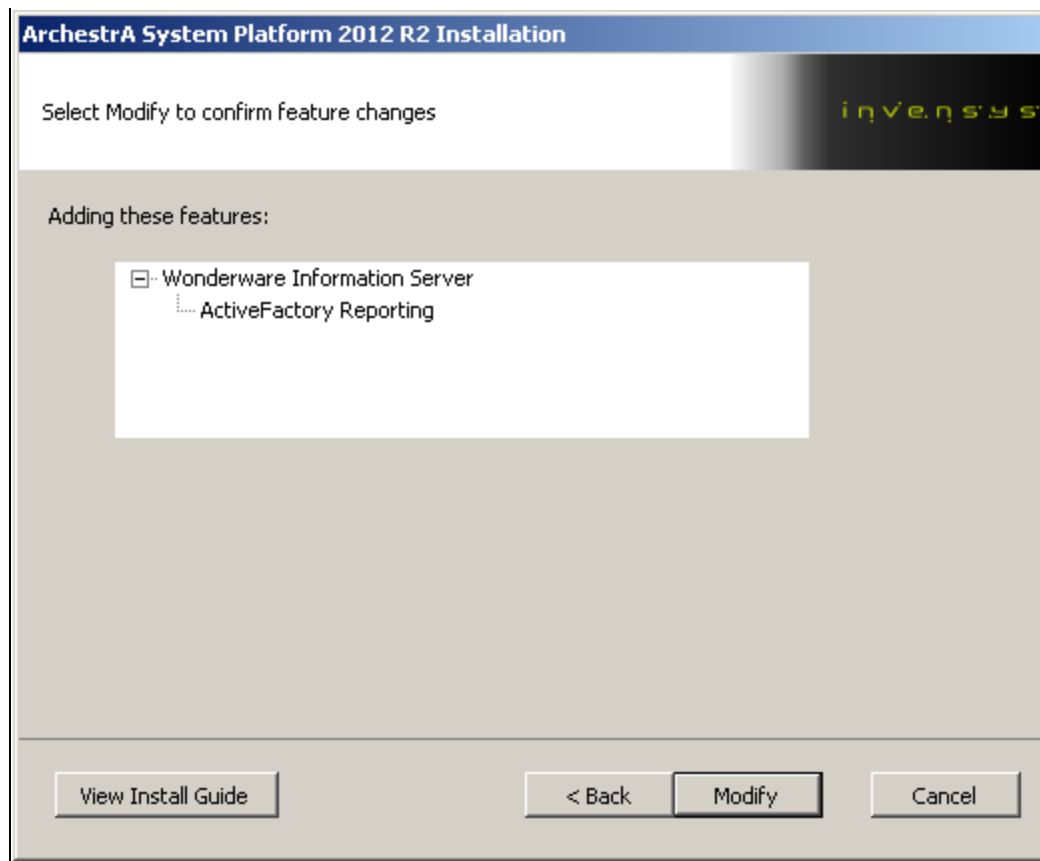


FIGURE 8: ACTIVEFACTORY REPORTING INSTALLATION OPTION

When the installation finishes, the **Configurator** appears.

12. Highlight the ActiveFactory Reporting feature under the Information Server and click **Define New Historian Data Source**.

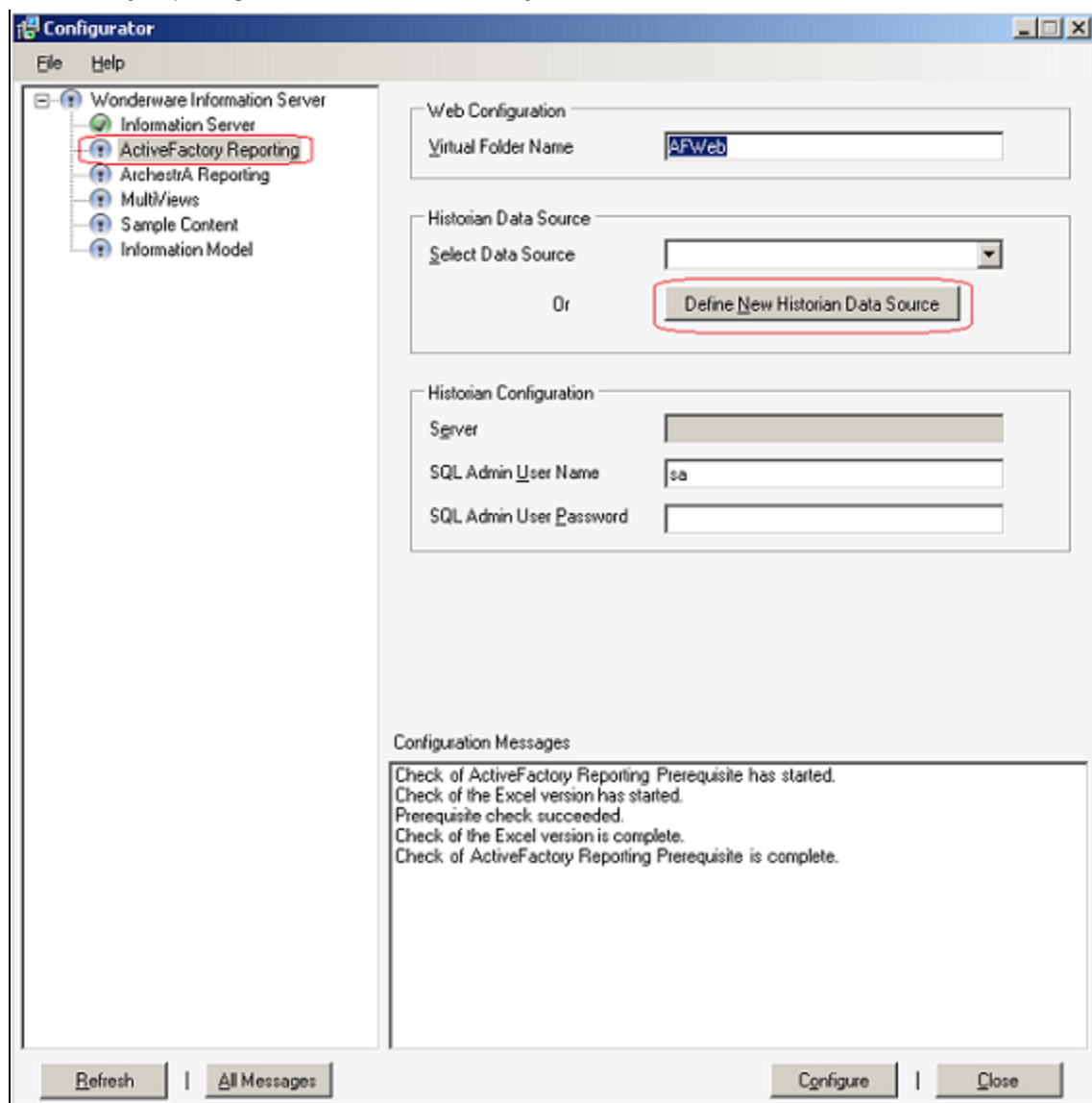


FIGURE 9: DEFINE NEW HISTORIAN DATA SOURCE

The **New Historian DataSource Form** appears (Figure 10 below).

13. Provide the following:

- **Data Source Name:** Type the name of the new data source.
- **Database Name: Runtime**
- **Historian User Name:** Type a valid SQL Server login (or you can choose Integrated Security).
- **Historian User Password:** Type a valid password for the SQL Server login.
- **Provider:** Type either **SQLNCLI 11** for SQL Server 2012, or **SQLNCLI 10** for SQL Server 2008.

The image shows a Windows-style dialog box titled "New Historian DataSource Form". It contains a "Data Source Details" section with the following fields and values:

Field	Value
Data Source Name	MyHistorian
Database Server Name	BRIANNWIN08
Database Name	Runtime
Integrated Security	<input type="checkbox"/>
Historian User Name :	sa
Historian User Password :	XXXXXXXXXX
Connection Timeout	0
Query Timeout	0
Provider	SQLNCLI11
Has HTTP mode	<input type="checkbox"/>
URL Connection	

At the bottom of the dialog box are two buttons: "OK" and "Cancel".

FIGURE 10: NEW HISTORIAN DATA SOURCE FORM

14. Click **OK**.
15. When the Configurator reappears, type the SQL Admin User Name and SQL Admin User Password.
16. Click **Configure** at the bottom of the dialog box (Figure 11 below).

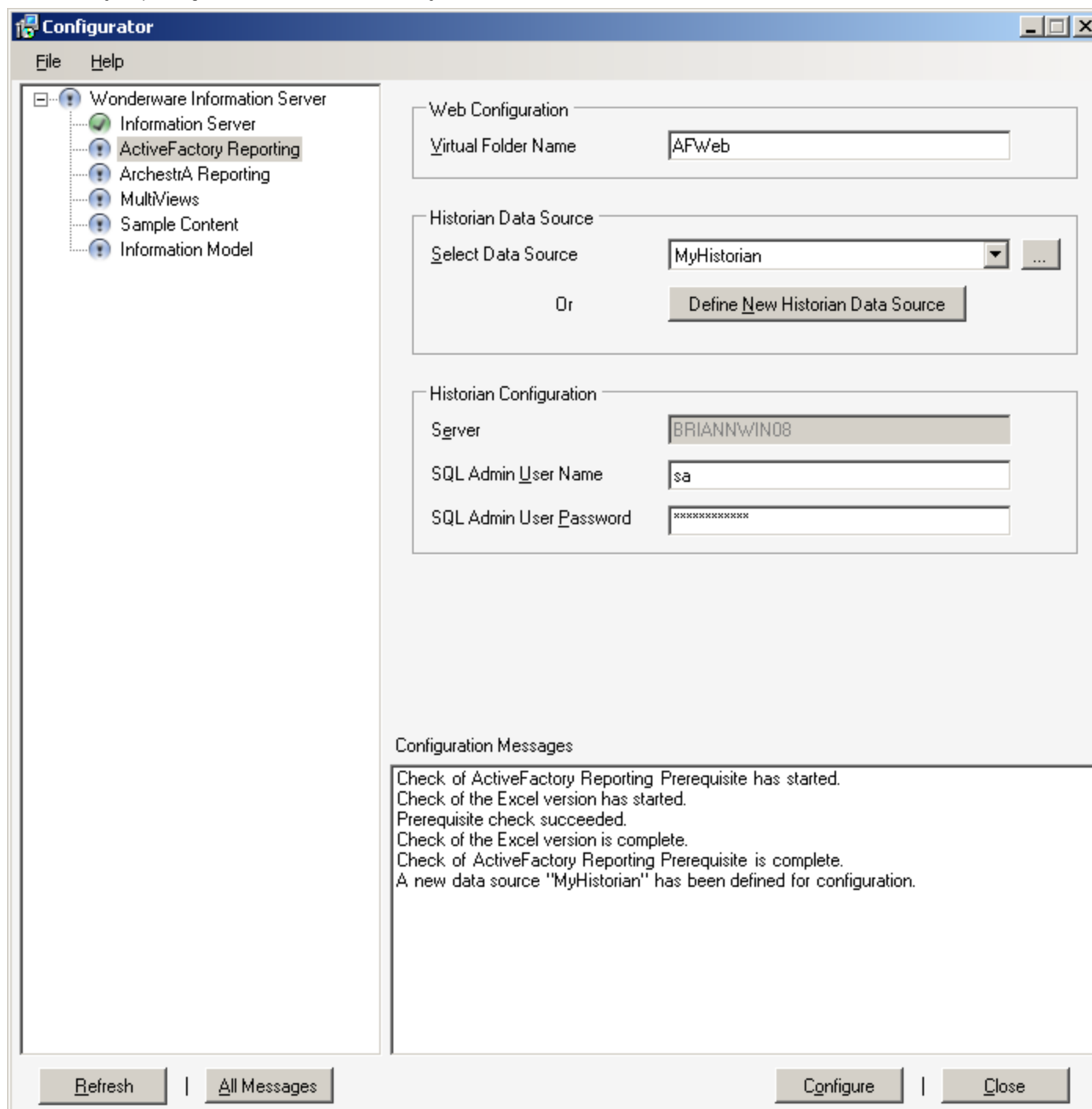


FIGURE 11: CONFIGURE THE NEW DATA SOURCE

The ActiveFactory Reporting configuration should now be completed successfully.

17. Click **Close** to close the Configurator.

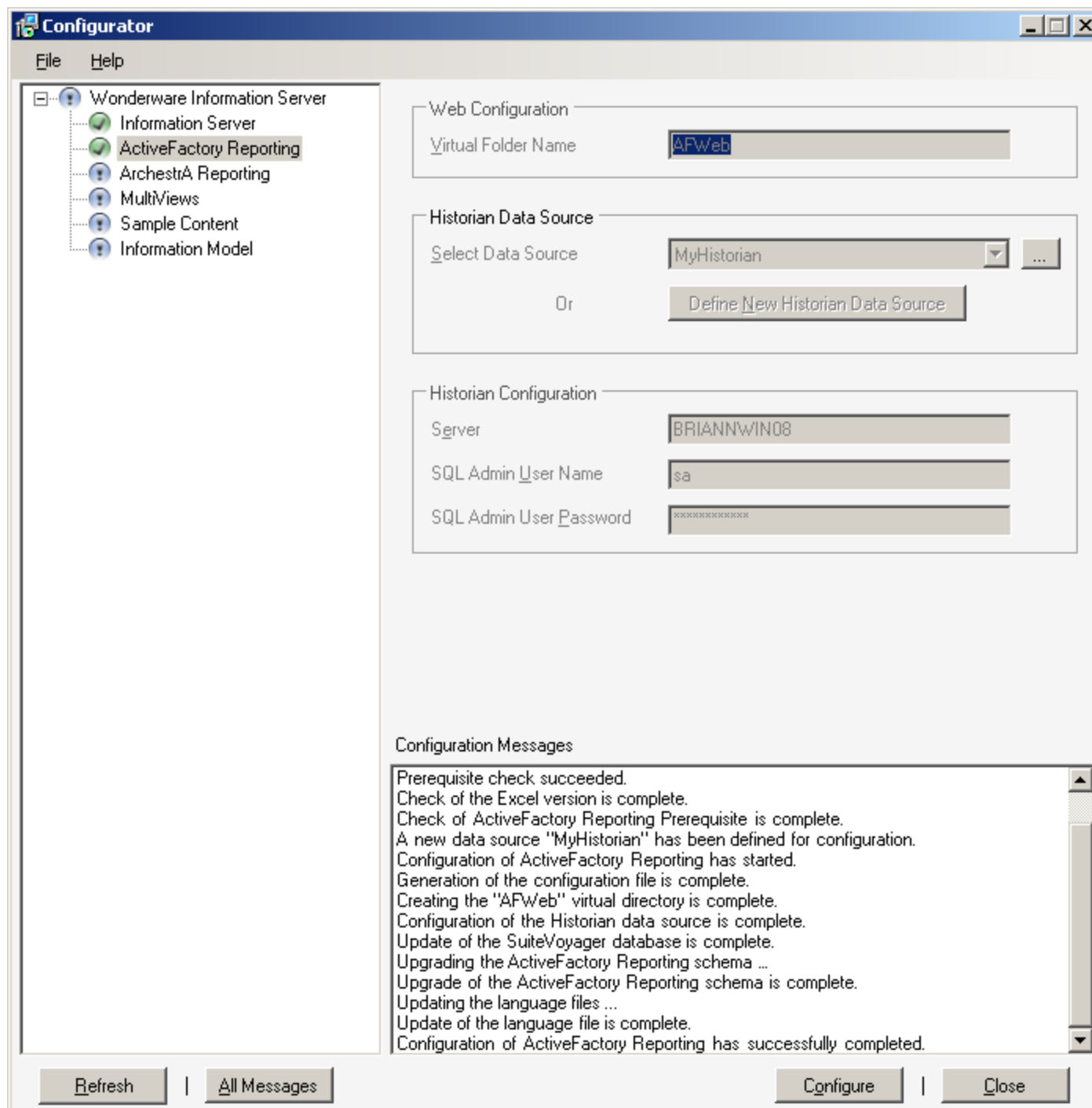


FIGURE 12: CLOSE THE CONFIGURATOR

The data source you just created should now be listed in the WIS portal (Figure 13 below).

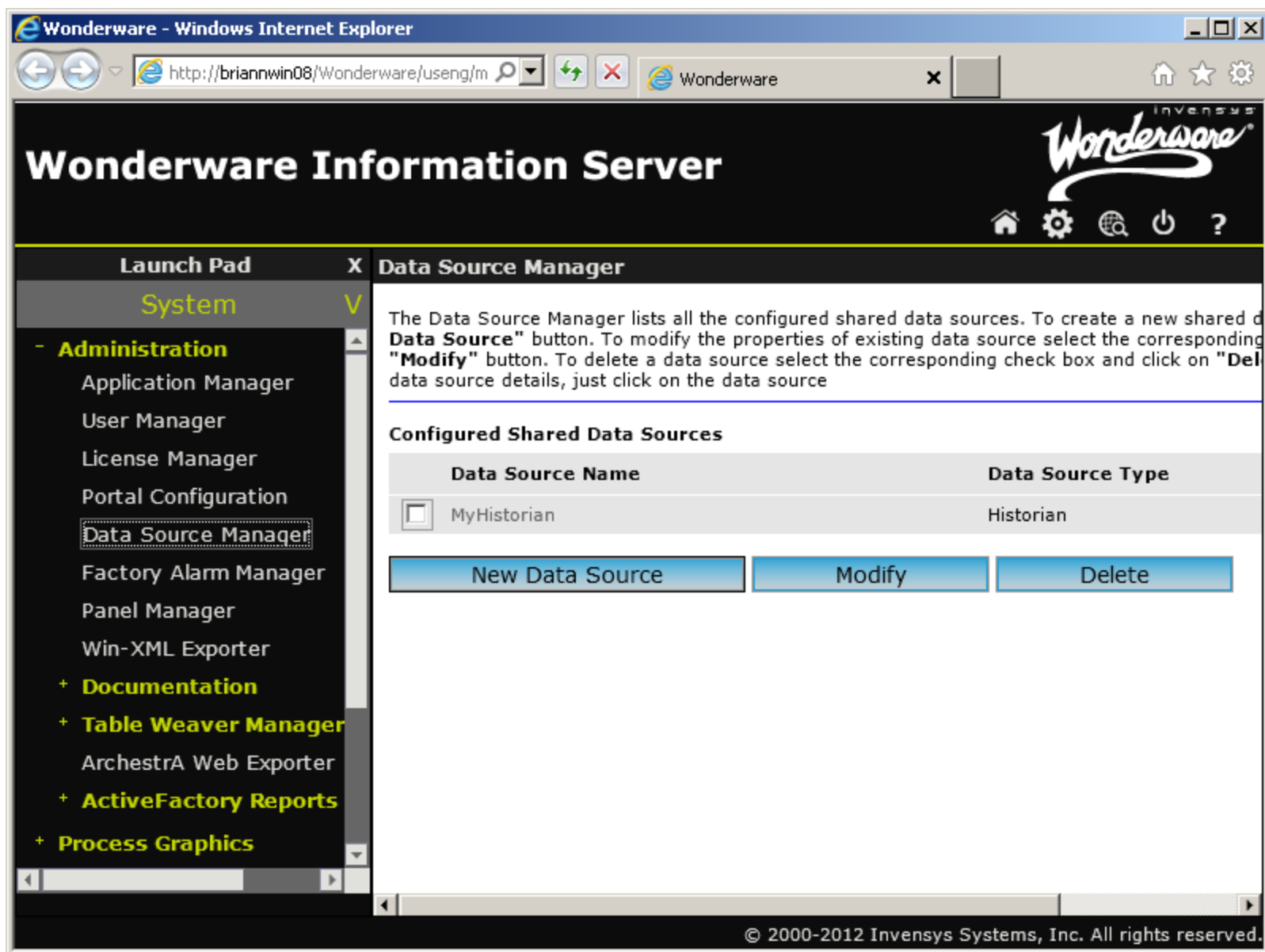


FIGURE 13: ACTIVE DATA SOURCE IN WIS

B. Nguyen, C. Boucher, I. Whitelaw

Tech Notes are published occasionally by Wonderware Technical Support. Publisher: Invensys Systems, Inc., 26561 Rancho Parkway South, Lake Forest, CA 92630. There is also technical information on our software products at [Wonderware Technical Support](#).

For technical support questions, send an e-mail to wwwsupport@invensys.com.

 [Back to top](#)

©2013 Invensys Systems, Inc. All rights reserved. No part of the material protected by this copyright may be reproduced or utilized in any form or by any means, electronic or mechanical, including photocopying, recording, broadcasting, or by any information storage and retrieval system, without permission in writing from Invensys Systems, Inc.

[Terms of Use](#).