

## [Tech Note 923](#)

# [Resolving Issue: The Microsoft Excel Application component is missing additional configuration required for ActiveFactory Reporting](#)

---

All Tech Notes, Tech Alerts and KBCD documents and software are provided "as is" without warranty of any kind. See the [Terms of Use](#) for more information.

Topic#: 002738

Created: February 2013

## Introduction

When configuring ActiveFactory Reporting website using the Configurator from the System Platform 2012 R2, you might encounter the following warning message preventing the configuration from completing.

**The Microsoft Excel Application component is missing additional configuration required for ActiveFactory Reporting.**

This *Tech Note* shows how to resolve the issue so that you can continue configuring the ActiveFactory Reporting component successfully.

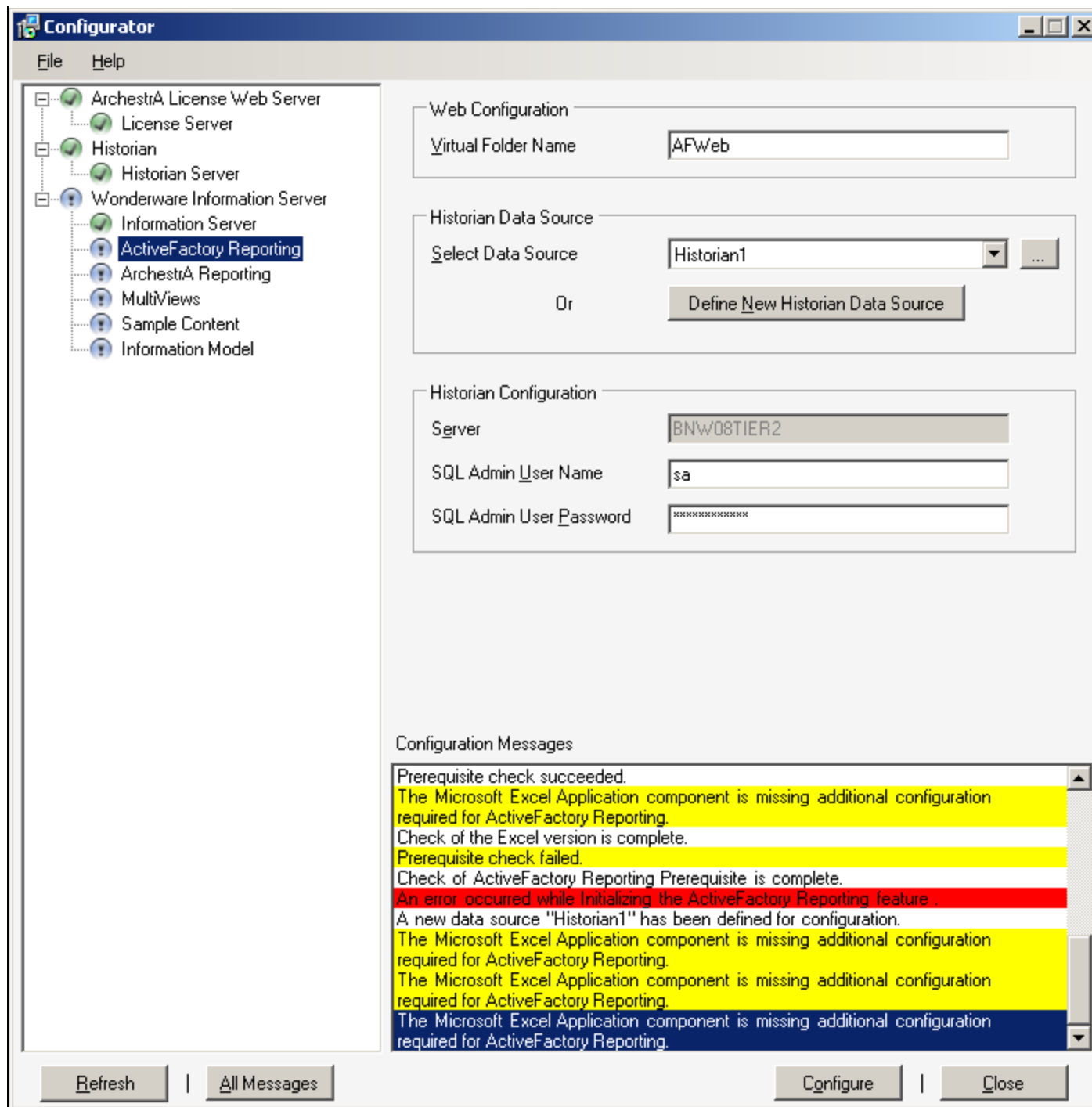


FIGURE 1: EXCEL APPLICATION COMPONENT IS MISSING

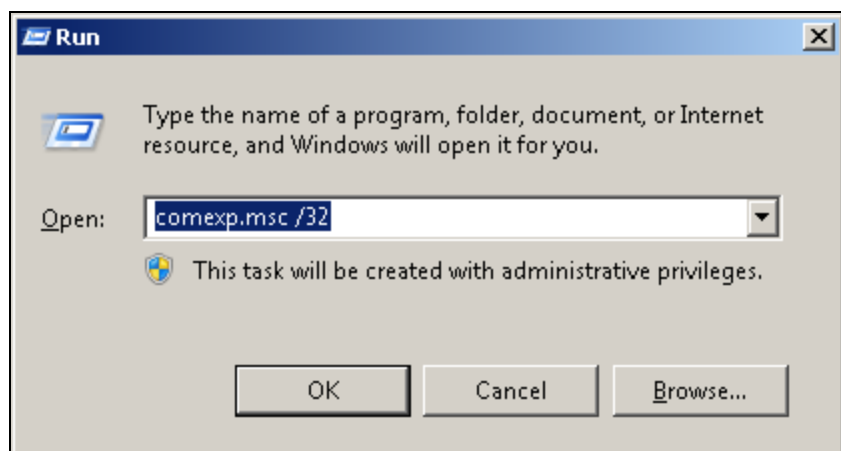
## Application Versions

- Wonderware Information Server v5.0 or greater
- Wonderware Historian Client v10.1 or greater
- Microsoft Excel 2010

**Note:** This Tech Note assumes that you are familiar with the above products. If you have any questions about Microsoft Excel, please contact Microsoft technical support at [www.microsoft.com](http://www.microsoft.com).

## Procedure

1. From the Start Menu, click **Run**.
2. Type **comexp.msc /32**.



**FIGURE 2: RUN COMEXP.MSC /32**

3. In the **Component Services** window, expand **Component Services/Computers/My Computer** and then **DCOM Config**.

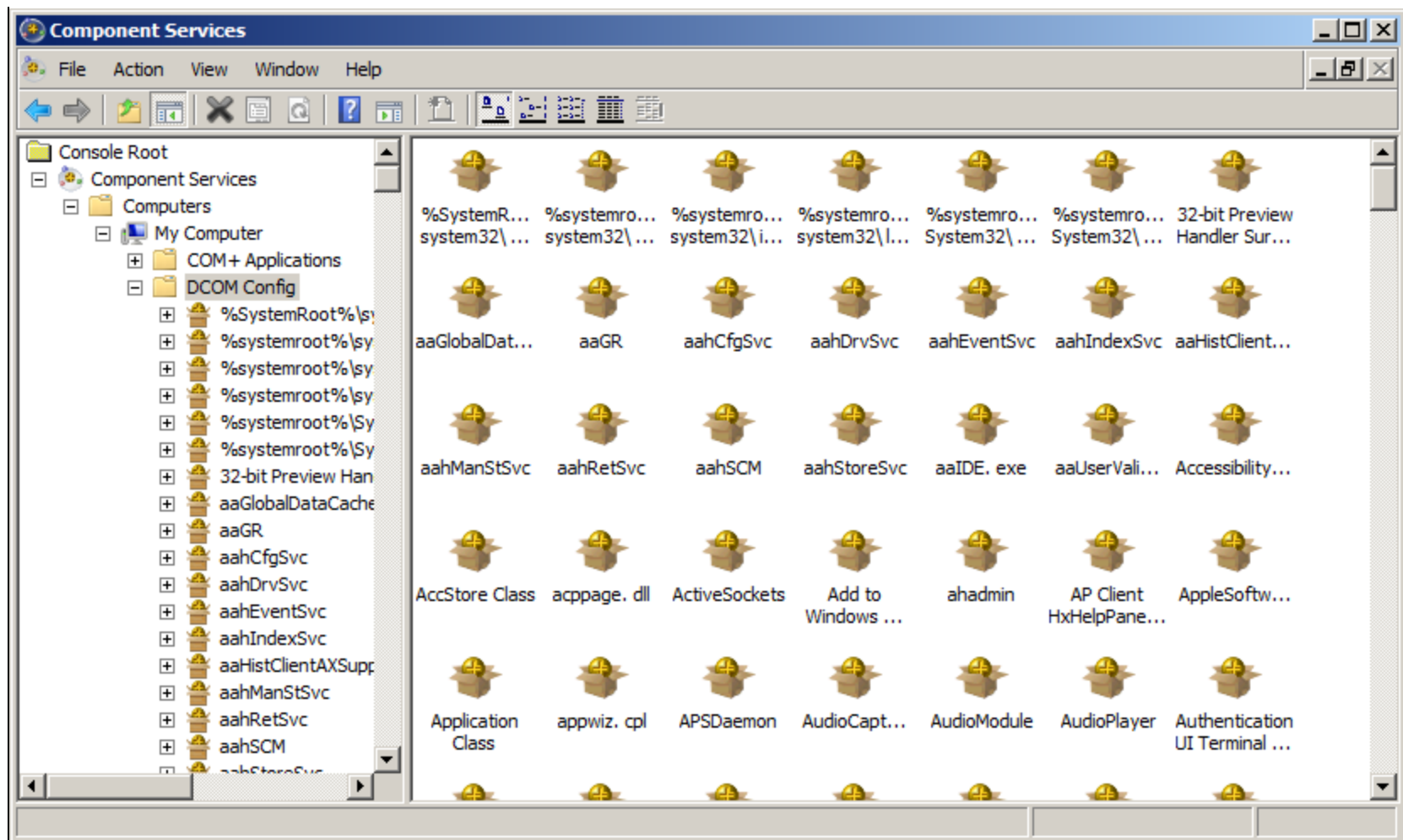


FIGURE 3: DCOM CONFIG COMPONENT SERVICES EDITOR

4. Locate **Microsoft Excel Application**, then right click the component and click **Properties**.
5. In the **Microsoft Excel Application Properties** dialog, click the **Identity** tab and make sure **The Interactive user** option is selected.

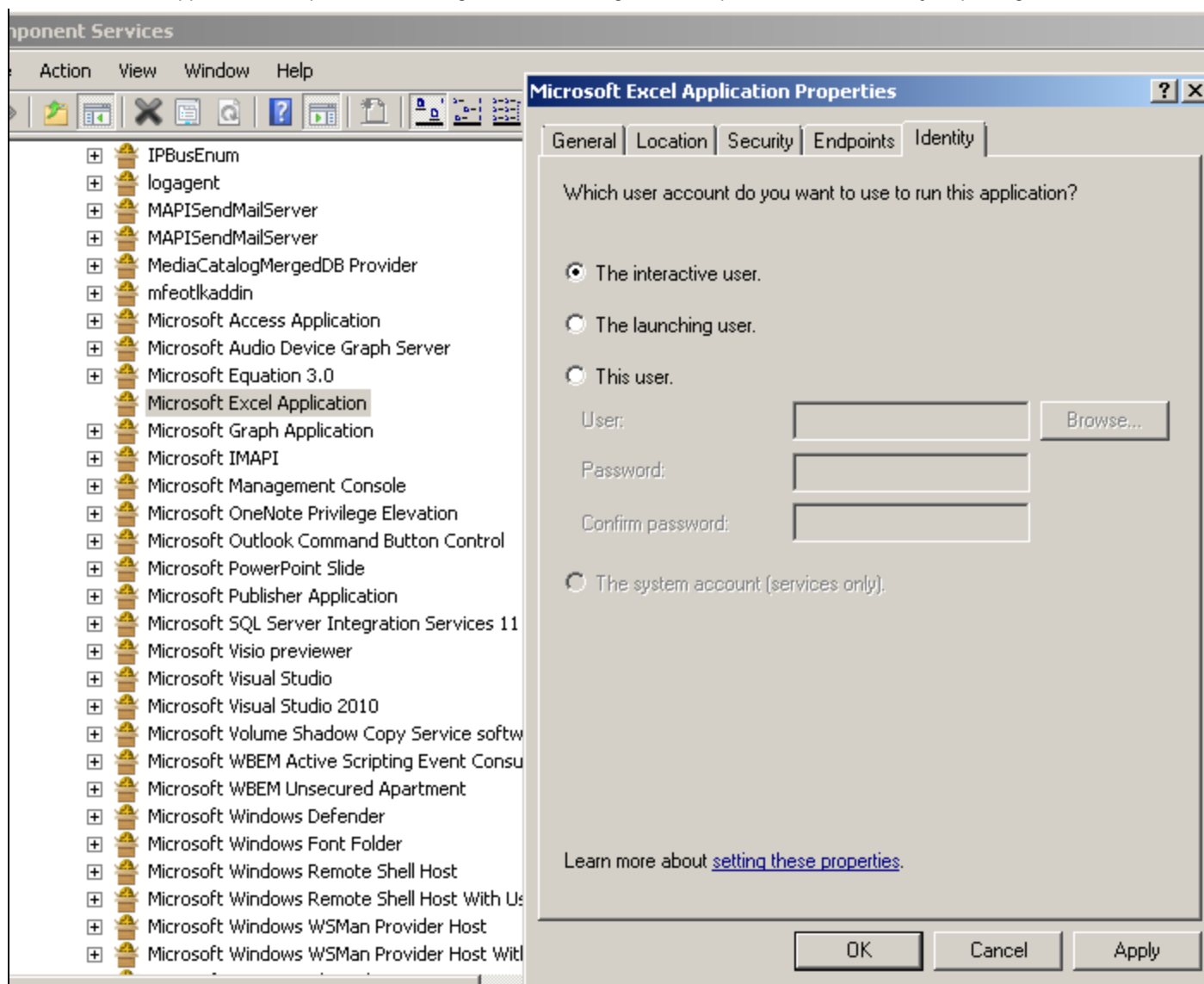


FIGURE 4: THE INTERACTIVE USER IDENTITY OPTION

6. Click **Apply** then **OK** to accept the changes.
7. Return to the Configurator and click **Refresh** to resume configuration.
8. Populate the **Historian Data Source** and **Historian Configuration** fields, then click **Configure**.

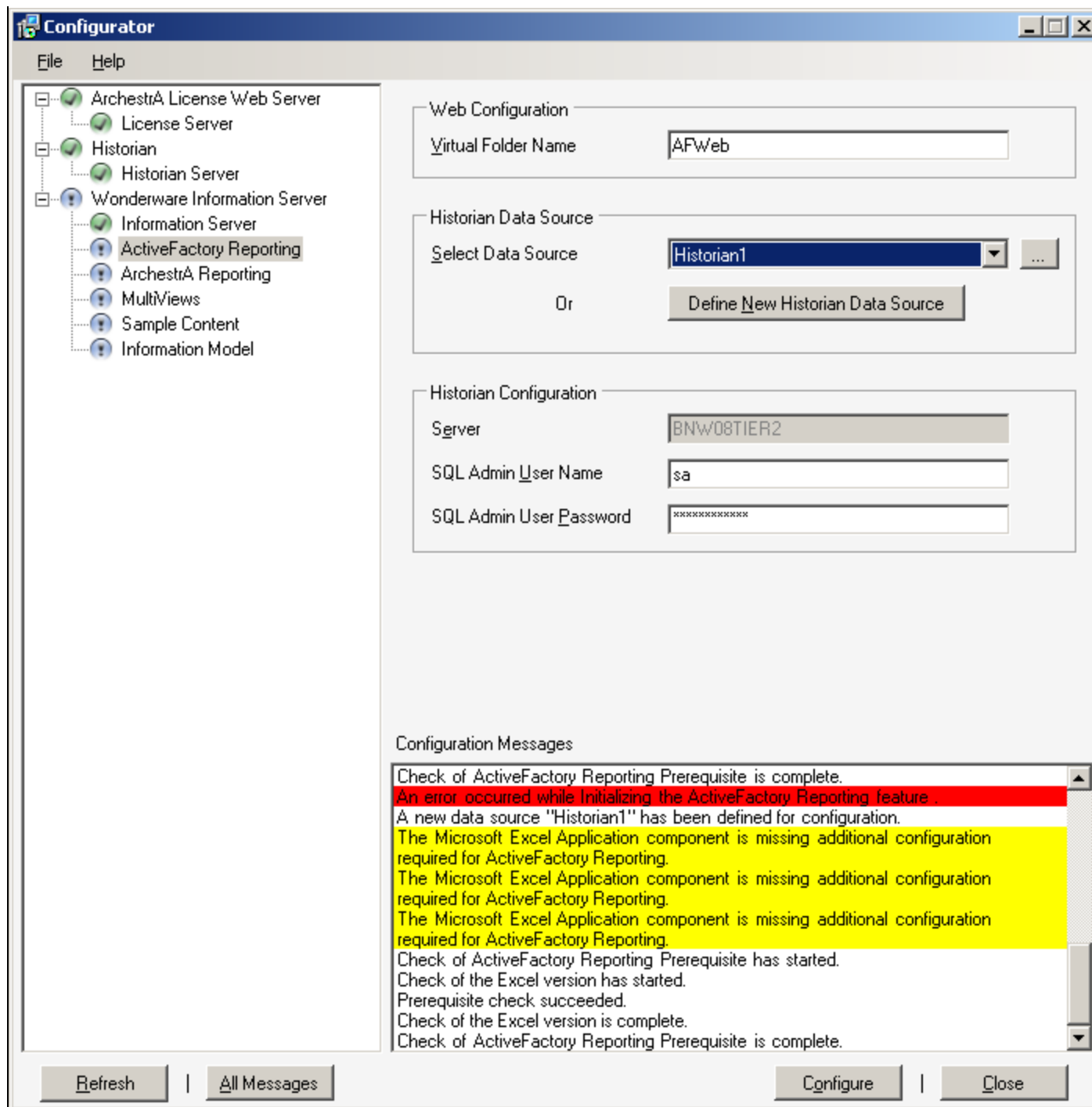


FIGURE 5: CONFIGURE HISTORIAN DATA SOURCE AND CONFIGURATION FIELDS

The ActiveFactory Reporting configuration should now finish successfully (Figure 6 below).

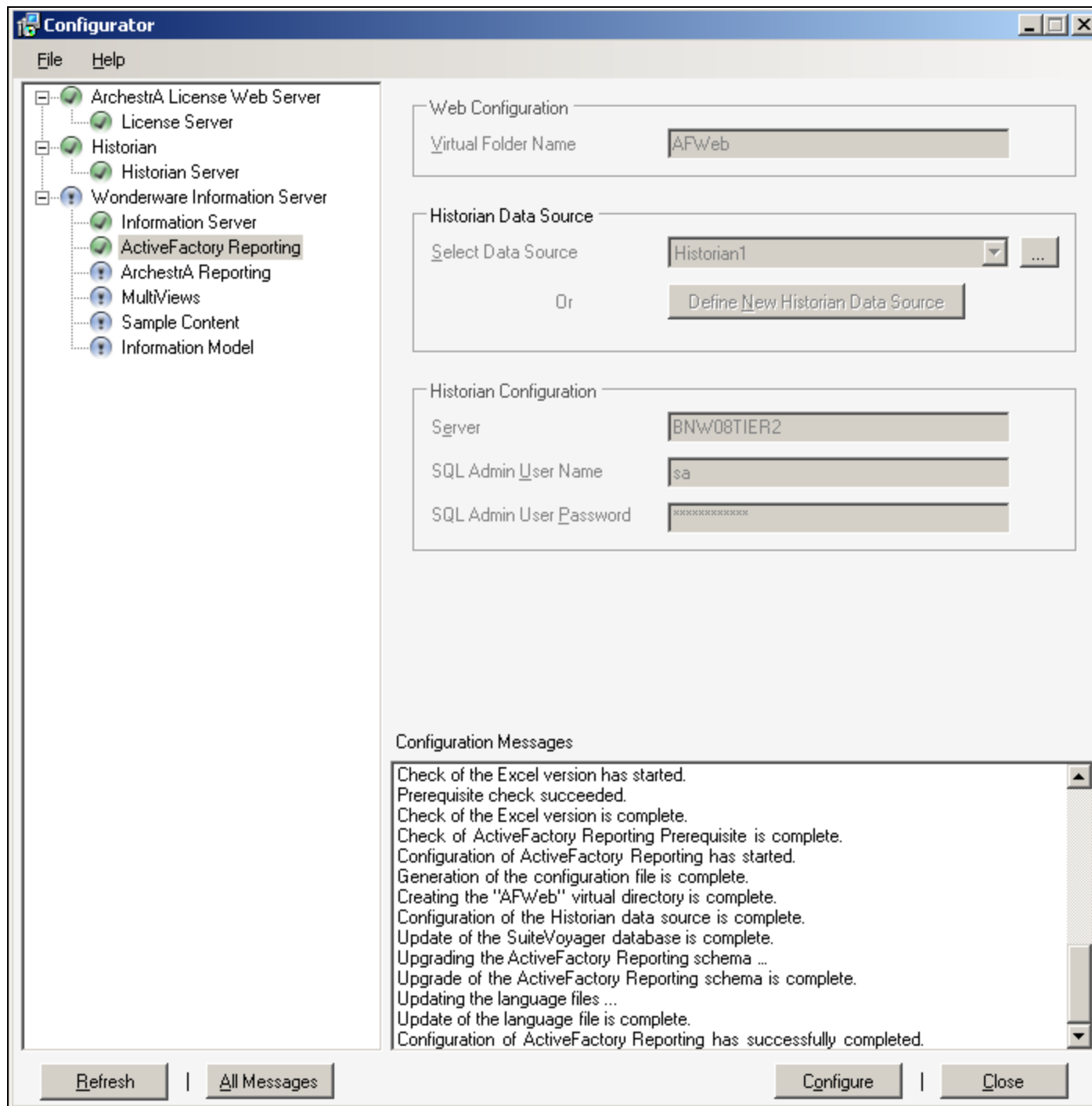


FIGURE 6: CONFIGURATION SUCCESS

Resolving Issue: The Microsoft Excel Application component is missing additional configuration required for ActiveFactory Reporting

B. Nguyen

*Tech Notes* are published occasionally by Wonderware Technical Support. Publisher: Invensys Systems, Inc., 26561 Rancho Parkway South, Lake Forest, CA 92630. There is also technical information on our software products at [Wonderware Technical Support](#).

For technical support questions, send an e-mail to [wwsupport@invensys.com](mailto:wwsupport@invensys.com).



[Back to top](#)

©2013 Invensys Systems, Inc. All rights reserved. No part of the material protected by this copyright may be reproduced or utilized in any form or by any means, electronic or mechanical, including photocopying, recording, broadcasting, or by any information storage and retrieval system, without permission in writing from Invensys Systems, Inc.

[Terms of Use](#).