

[Tech Note 937](#)

Using the Wonderware Installation Wizard for Wonderware Industrial Computers

All Tech Notes, Tech Alerts and KBCD documents and software are provided "as is" without warranty of any kind. See the [Terms of Use](#) for more information.

Topic#: 002754

Created: March 2013

Updated: September 2014

Introduction

This *Tech Note* describes the Wonderware Installation Wizard. It is available on all Windows XP and Windows 7 Wonderware Industrial Computers listed below. The Wizard provides a simple interface to select which version and language of InTouch and App Server Bootstrap will be installed on the machine.

Application Versions

- TPCE-15S-2NMXU
- TPCE-15S-2NM7U
- OICB-10A-7HMXU
- OICB-15A-7HM7U

The Wonderware Installation Wizard appears when you first boot up the computer, after the Operating System Setup is finished. Only compatible software versions for the particular Operating Systems are available for installation (Figures 1 and 2 below).

After selecting the necessary components, tap **Begin Install**. This initiates the installation process and displays the **Installation Status** window (Figure 3 below). The window displays which command is currently running and which components have successfully installed. No further interaction is necessary.



FIGURE 1: WONDERWARE INSTALLATION WIZARD ON WINDOWS XP



FIGURE 2: WONDERWARE INSTALLATION WIZARD ON WINDOWS 7

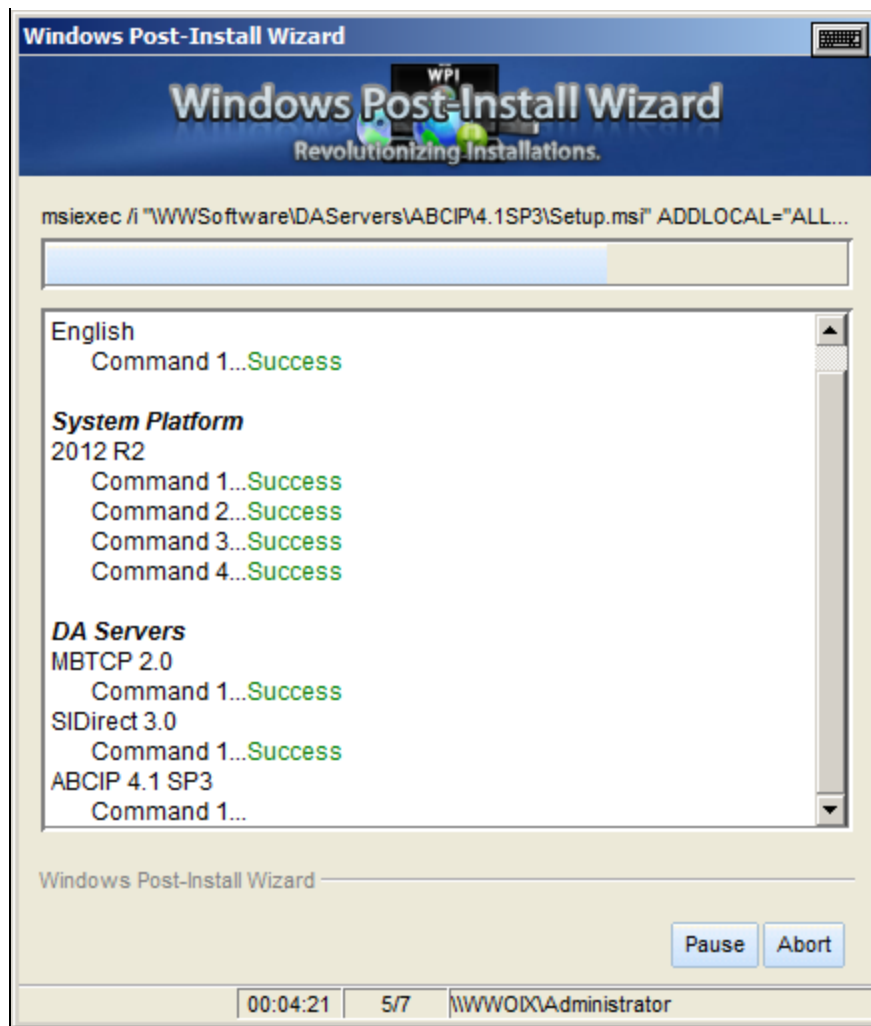


FIGURE 3: INSTALLATION STATUS WINDOW

Installation Wizard Sections

Each Wizard section is described below:

Language

- Only one option can be selected.
- To select a different option, you must uncheck the original.

System Platform

- Only one option can be selected. In order to select a different option, the original one must be unchecked.
- Each option includes **InTouch Runtime** and its corresponding Bootstrap version.

DA Servers

- Multiple options can be selected.
- FSGateway is part of the installation of System Platform 2012 and 2012 R2

Cleanup

- All the installation files for all the versions and languages are located on the hard drive of the machine. The Wizard can either delete these temporary files or leave them on the machine, depending on whether or not this box is checked.
- If **Acronis True Image** is installed on the machine, the next reboot creates a back up image on a hidden partition on the hard drive. This back up image will be at the point the machine is *after* all the software has been installed.

Keep in mind that if the installation files were not deleted, they too will be backed up.

If there is not enough space to create the backup image (for example on smaller hard drives), the backup process is not initiated. Regardless of this checkbox being selected, True Image can be installed with the same back up instructions via the batch file located at **C:\Program Files\Acronis\OverwriteFactory.bat**. When this box is selected a backup is created. If at some point the batch file is launched, it will overwrite the original backup.

Notes

- All the temporary installation files are located in **C:\WWSsoftware**. Due to the nature of the System Platform 2012 and 2012 R2, configuring a silent installation with multiple language selections alters the manual installation to the point where it is no longer usable. For any further changes to the installation, use the System Platform DVD.
- A log file for the installation process is created in **C:\InstallLog<date/time>.txt**.
- On the desktop, a file called **Preinstalled Inventory** contains all the software that was installed prior to the shipment of the device. It also contains information regarding how to change to ArchestrA user and how to remove the auto-logon feature of Windows.
- The installation files for SQL Server 2008 R2 are available under **C:\SQL2K8R2SSME**.

Frequently Asked Questions

Q: How can I access the installation wizard again if I exit the installation wizard before installing any software?

A: Re-launch the installation wizard utility under **C:\Tools\WPI\WPI.exe**

Q: Would an Acronis back-up be created if the wizard is accessed manually?

A: If the Acronis True image option under the wizard is checked, a back up will be created. You can also run True image from **C:\Program Files\Acronis\Overwritefactory.bat**. As mentioned earlier, the image will only contain what was on

Using the Wonderware Installation Wizard for Wonderware Industrial Computers

the computer at the time Acronis is run and will over-write any previous images.

Q: Can I access/use the installation wizard after installing software?

A: You can access the wizard after installing the software, but you can no longer reinstall/change the software using the Wizard. You must use A DVD for any subsequent software installation changes.

Click the following icon to view this file in .pdf format:



B. Leonard and N. Khadikar

Tech Notes are published occasionally by Wonderware Technical Support. Publisher: Invensys Systems, Inc., 26561 Rancho Parkway South, Lake Forest, CA 92630. There is also technical information on our software products at [Wonderware Technical Support](#).

For technical support questions, send an e-mail to wwsupport@invensys.com.

 [Back to top](#)

©2014 Invensys Systems, Inc. All rights reserved. No part of the material protected by this copyright may be reproduced or utilized in any form or by any means, electronic or mechanical, including photocopying, recording, broadcasting, or by any information storage and retrieval system, without permission in writing from Invensys Systems, Inc.

[Terms of Use](#).