

[Tech Note 958](#)

Installing Microsoft® SQL Server 2012 for Wonderware Products

All Tech Notes, Tech Alerts and KBCD documents and software are provided "as is" without warranty of any kind. See the [Terms of Use](#) for more information.

Topic#: 002778

Created: April 2013

Introduction

Products included in Wonderware System Platform 2012 R2 (Historian/Historian Client, Wonderware Application Server, and Wonderware Information Server) support 32- and 64-bit versions of SQL Server 2012, but only for Standard Edition and Enterprise Edition. Only the 32-bit version of SQL Server 2012 Express Edition is supported.

Check the [Compatibility DB Matrix on the Wonderware Developer Network](#) for details.

This *Tech Note* provides step-by-step procedures to install Microsoft SQL Server 2012 on a 32- or 64-bit Operating System.

You should allow approximately 1-2 hours to complete the installation.

Application Versions

- Microsoft SQL Server 2012
- All Wonderware Products that support/run with MS SQL Server 2012

Installing SQL Server 2012

1. Insert the SQL Server 2012 installation DVD into your DVD drive. If the autorun feature on your DVD drive does not launch the installation program, navigate to the root of the DVD and double-click Setup.exe. You will see the SQL Server Installation Center:

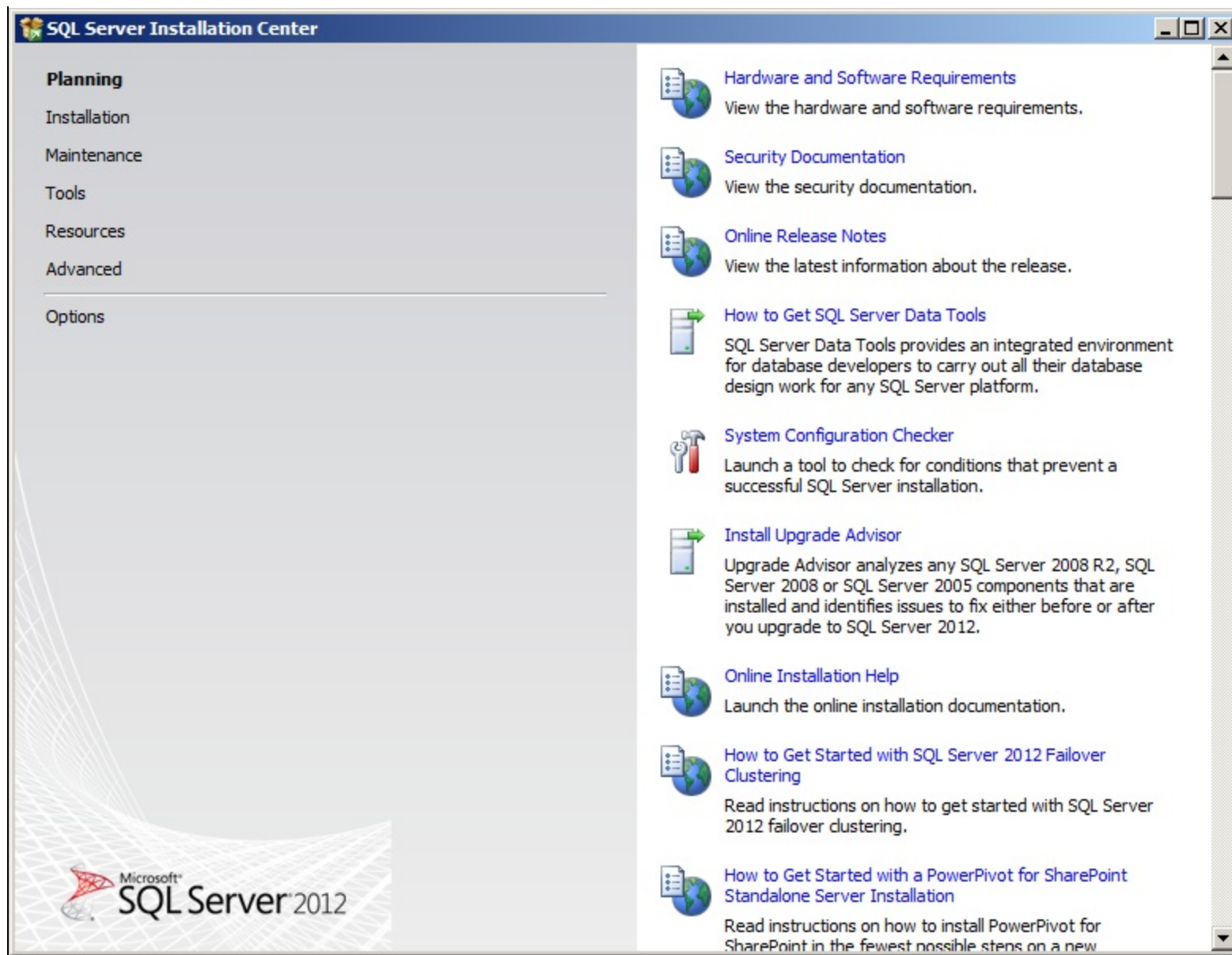


FIGURE 1: SQL SERVER INSTALLATION CENTER

Important: SQL Server 2012 is not supported for versions prior to System Platform 2012 R2. For more information, which product is supported with what SQL Server version, please see the Database Compatibility Matrix on the Wonderware Developer Network.

2. Click the **Installation** item and then **New SQL Server stand-alone installation** (Figure 2 below).

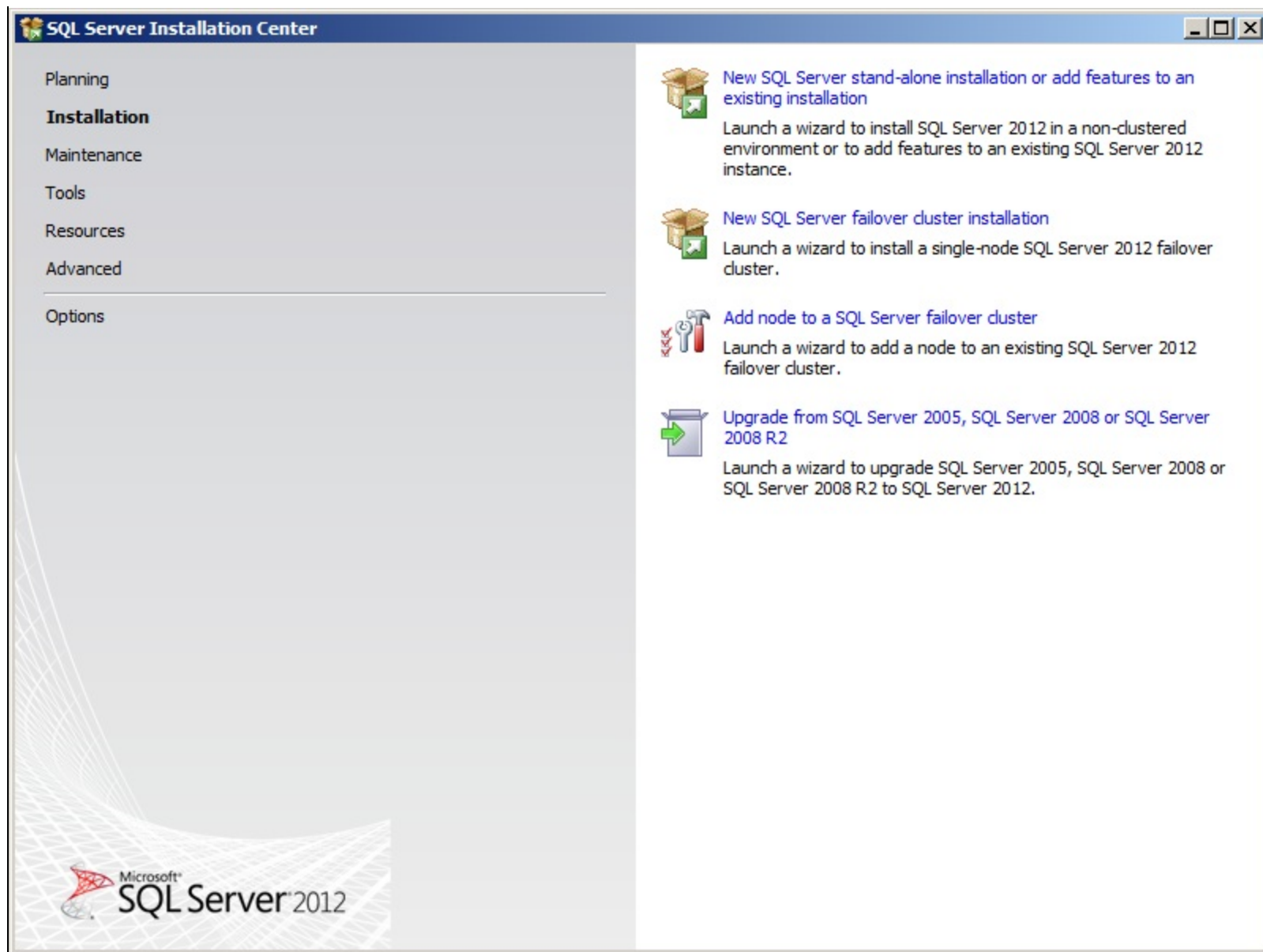
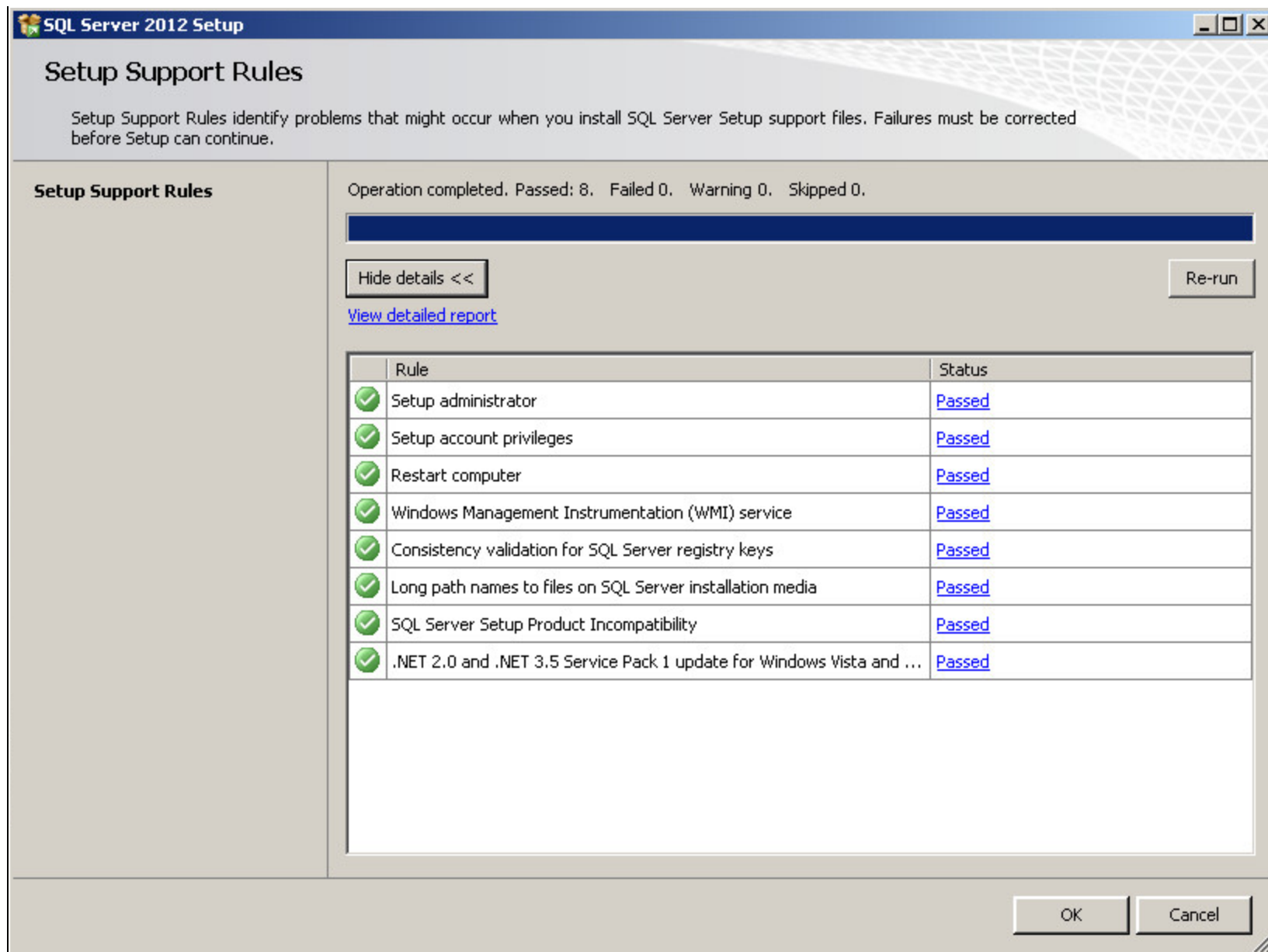


FIGURE 2: SQL SERVER INSTALLATION CENTER/INSTALLATION OPTIONS

3. This installation runs the **Setup Support Rules** operation. This operation identifies problems that might occur during the installation of SQL Server Setup Support files.

You must correct all the problems before the install can continue.

- Click the **Show Details** button to see the status of the rules (Figure 3 below).

**FIGURE 3: COMPLETED SETUP SUPPORT RULES**

4. Click **OK**.
5. On the **Product Key** dialog box, click the **Enter the product key** option. The embedded product key should appear in the field.

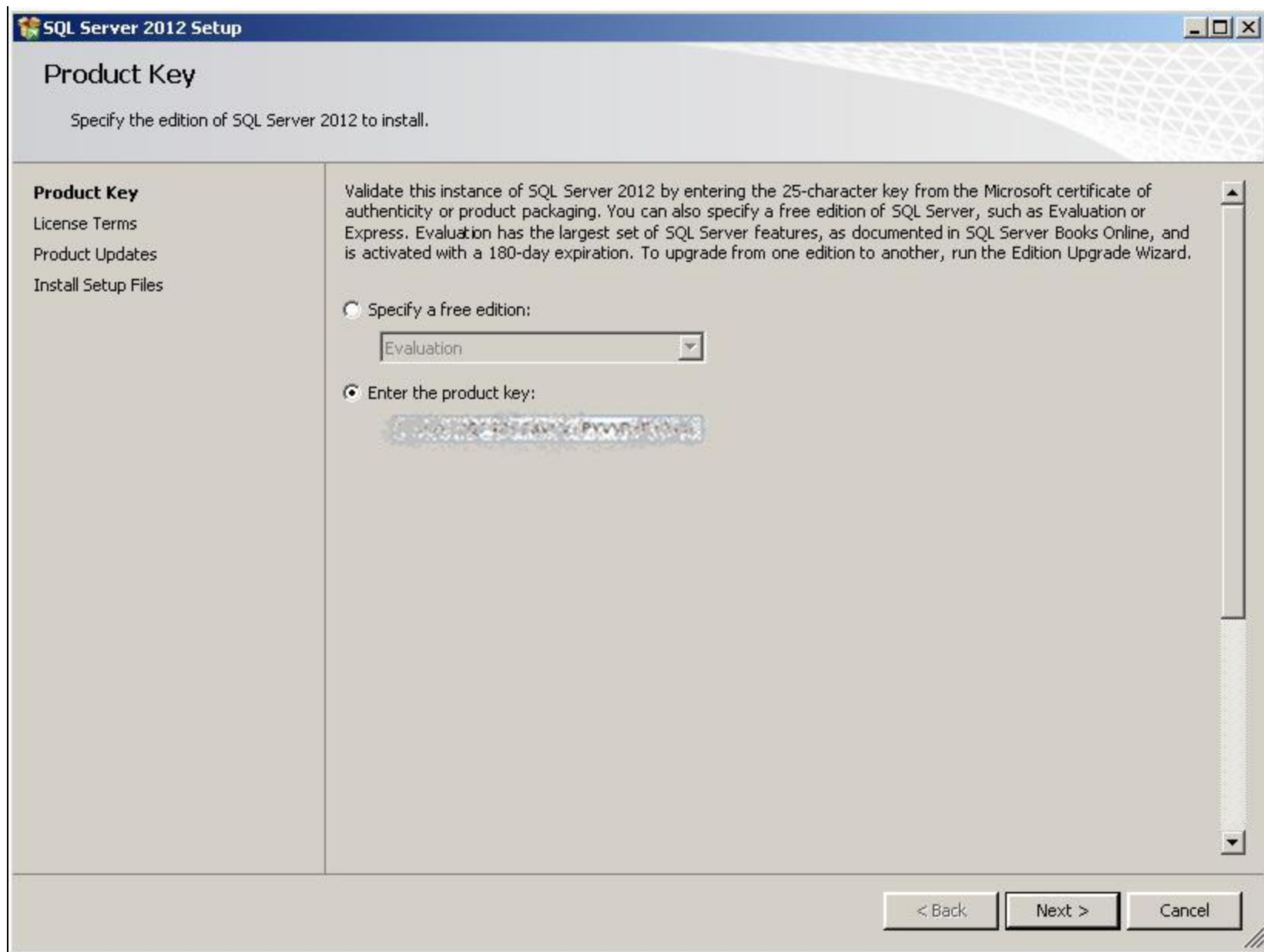
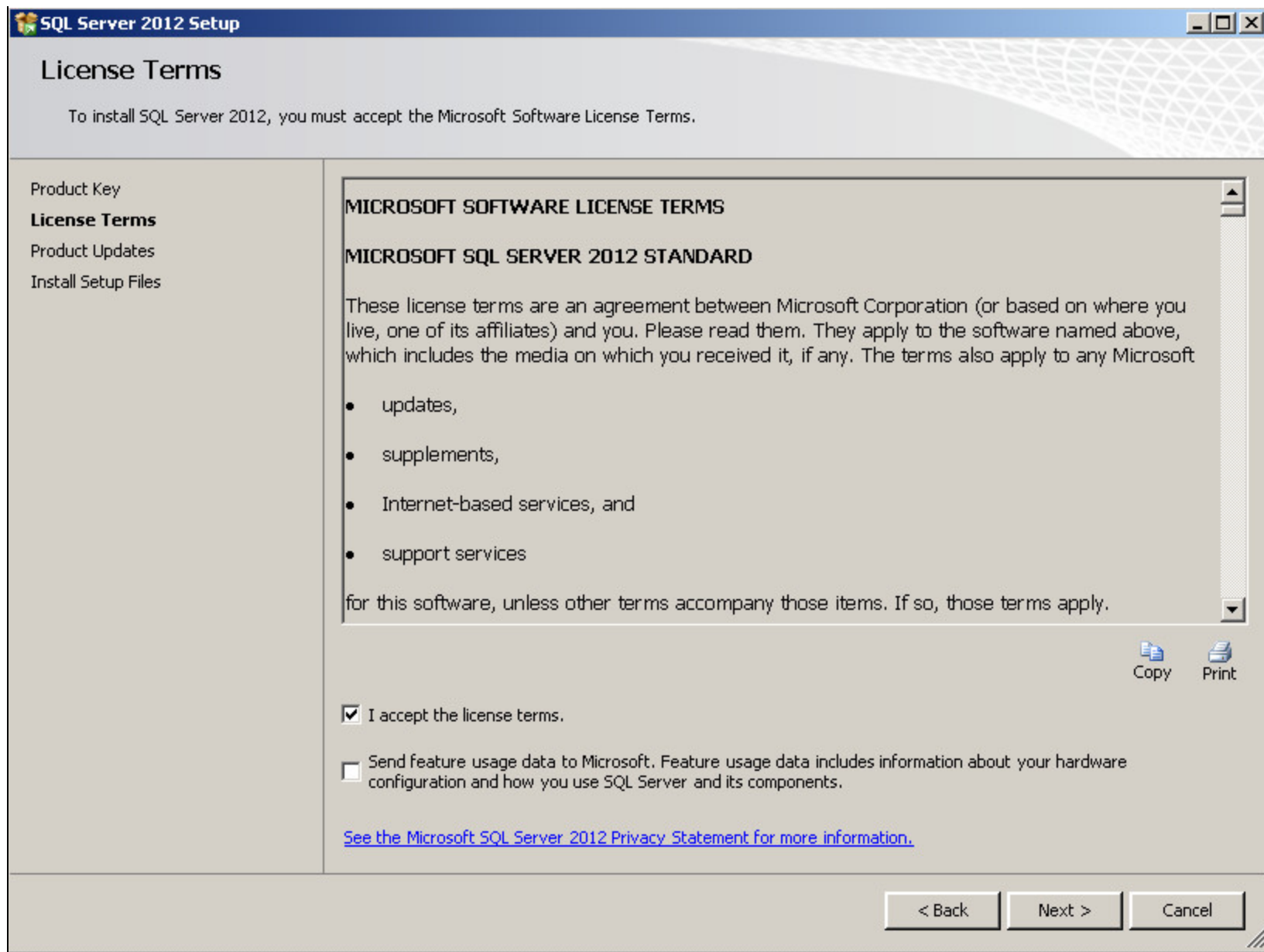


FIGURE 4: EMBEDDED PRODUCT KEY

6. Click **Next** and review the license terms. Click **I Accept the License Terms** and then click **Next**.

**FIGURE 5: ACCEPT LICENSE TERMS**

7. On the **Install Setup Files** wizard, click **Install** to continue with the support files installation.

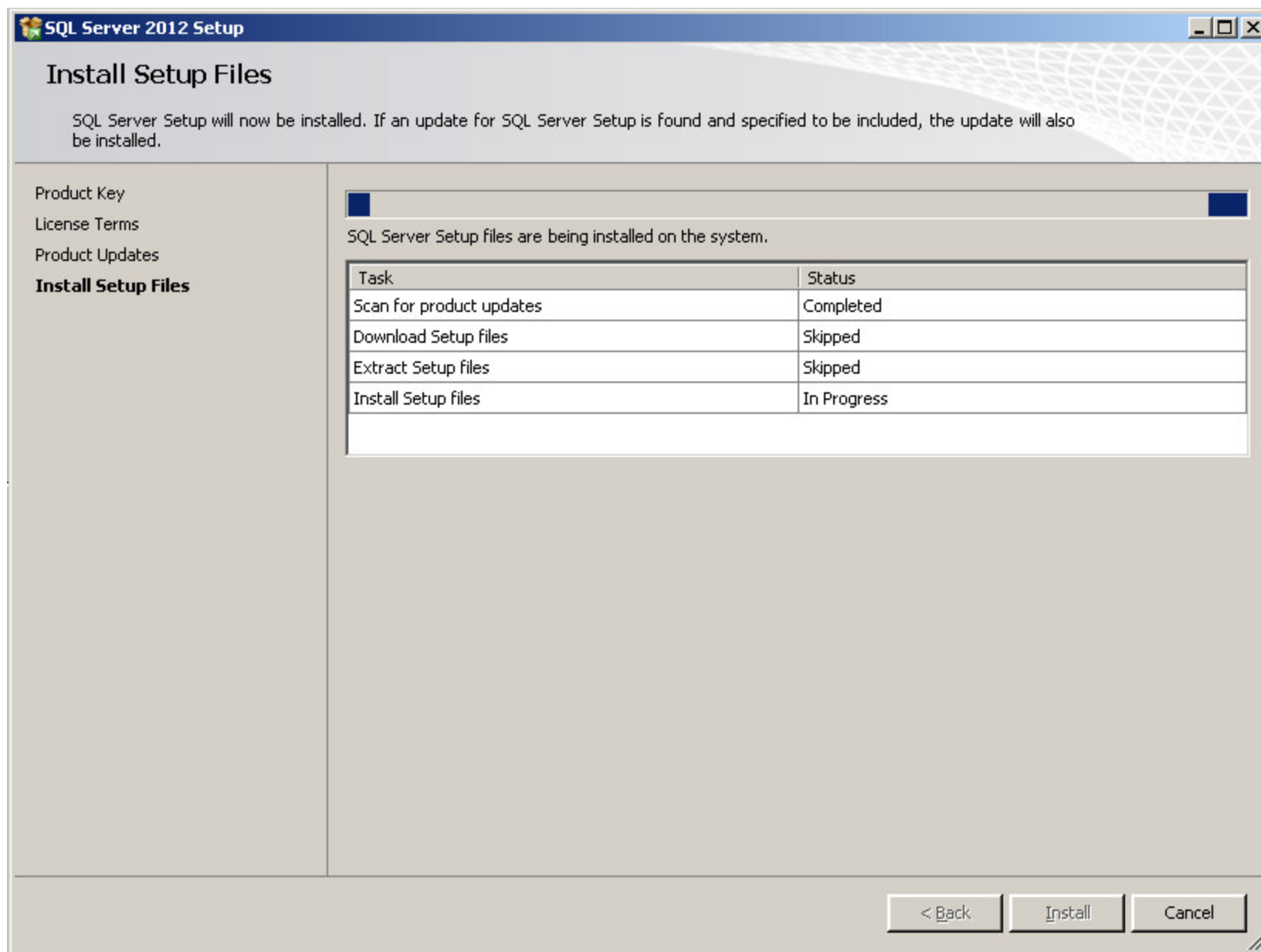


FIGURE 6: SUPPORT FILES INSTALLATION

- When the Support Files installation is finished, resolve any **Failed** Status messages and click **Next**.

Note: Using Windows Firewall is optional. If it is enabled, you must make sure the appropriate ports are open to enable remote access for SQL Server. You can proceed with the SQL Server installation and configure the ports later if desired.

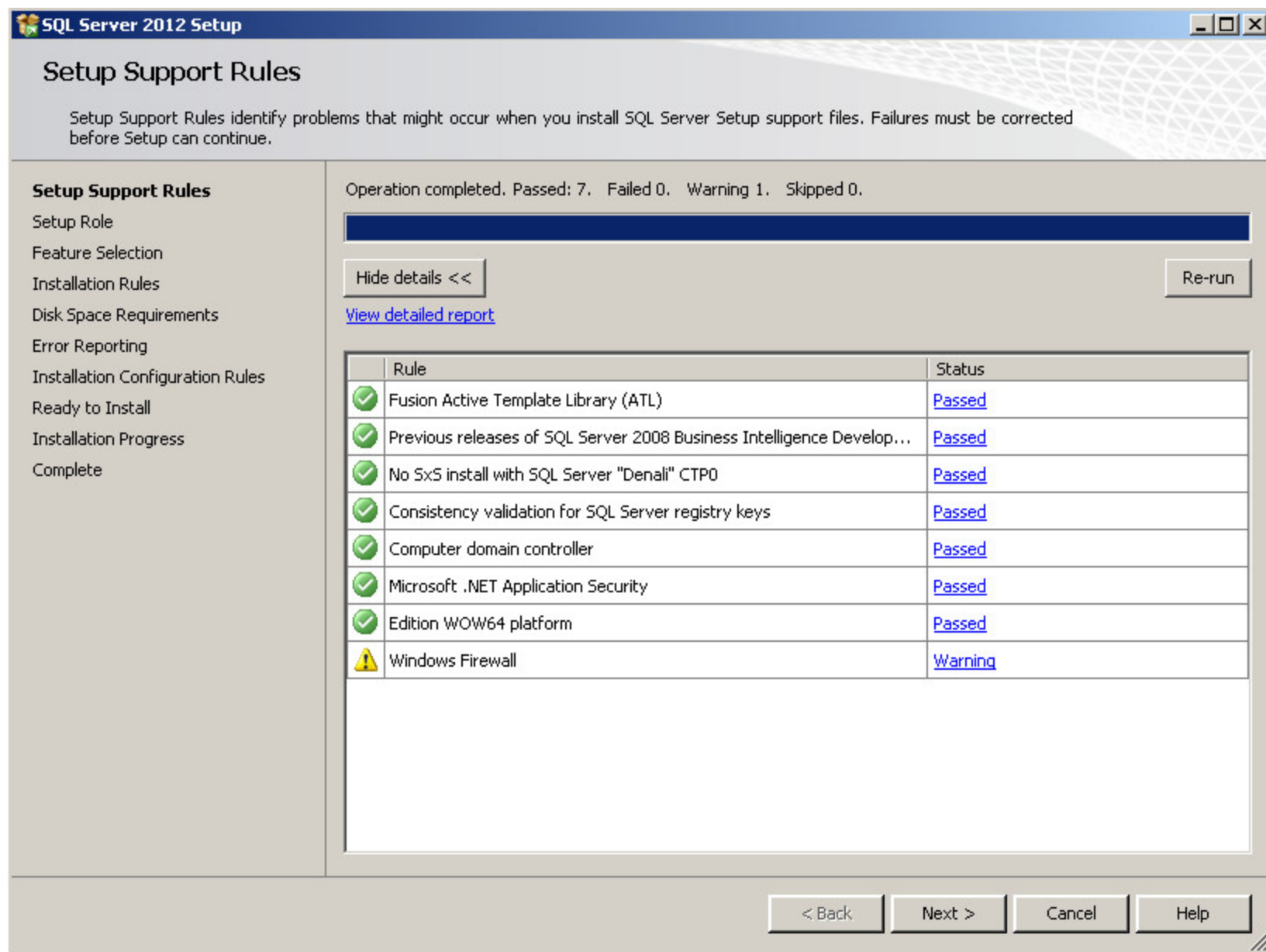


FIGURE 7: SETUP SUPPORT FILES INSTALLATION COMPLETED

9. Select **SQL Server Feature Installation** from the Setup Role screen, and click **Next**.

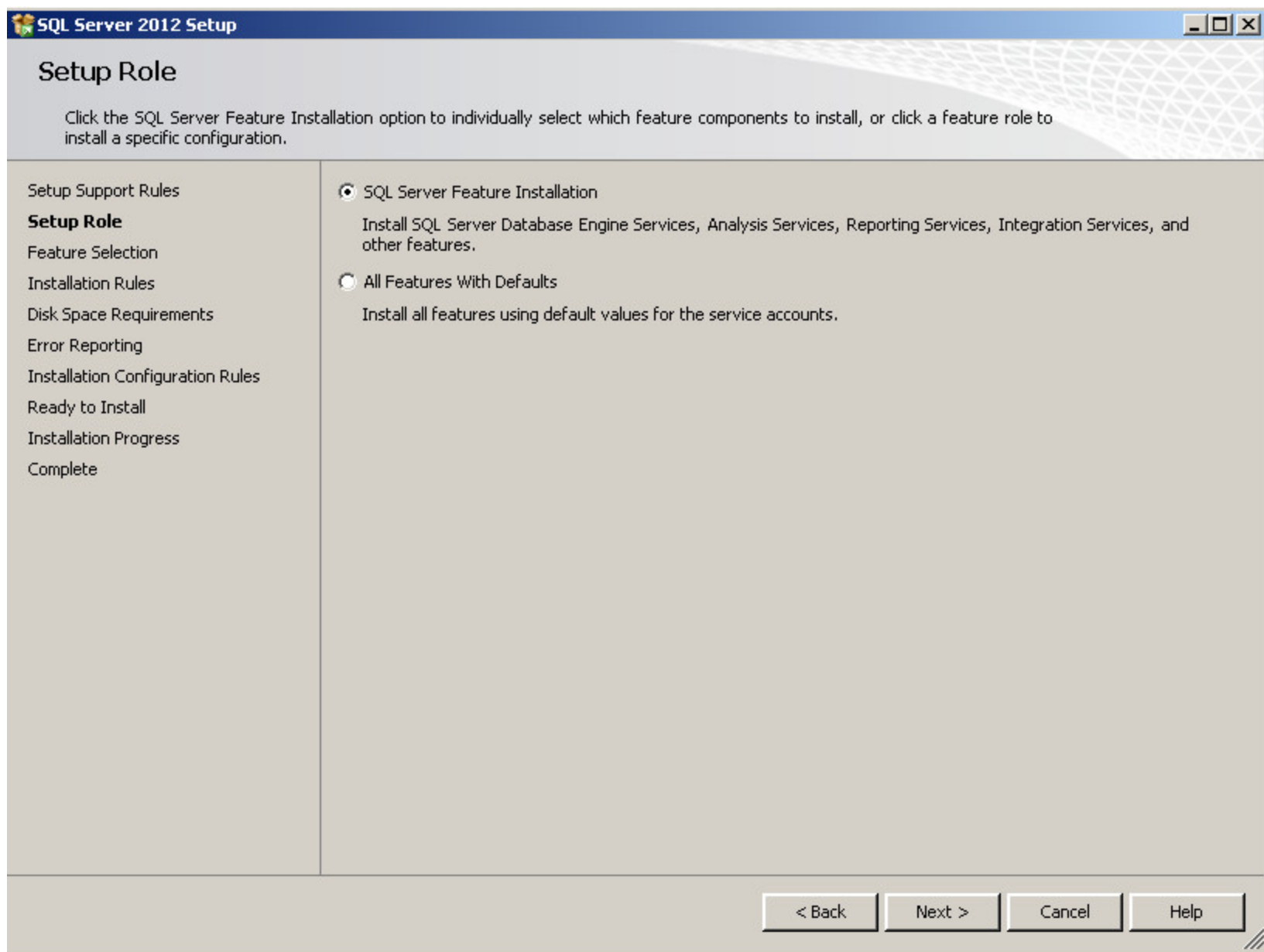


FIGURE 8: SQL SERVER FEATURE INSTALLATION SELECTION

10. Select the features shown in Figure 9 (below) and click **Next**.

- **Reporting Services** is optional for most Wonderware components, but may be required for use with Wonderware Information Server (WIS) integration, depending on your choices during product installation.
- **SQL Server Replication, Full-Text Search, Analysis Services, and Integration Services** are optional selections that do not impact functionality but may be useful under various circumstances.

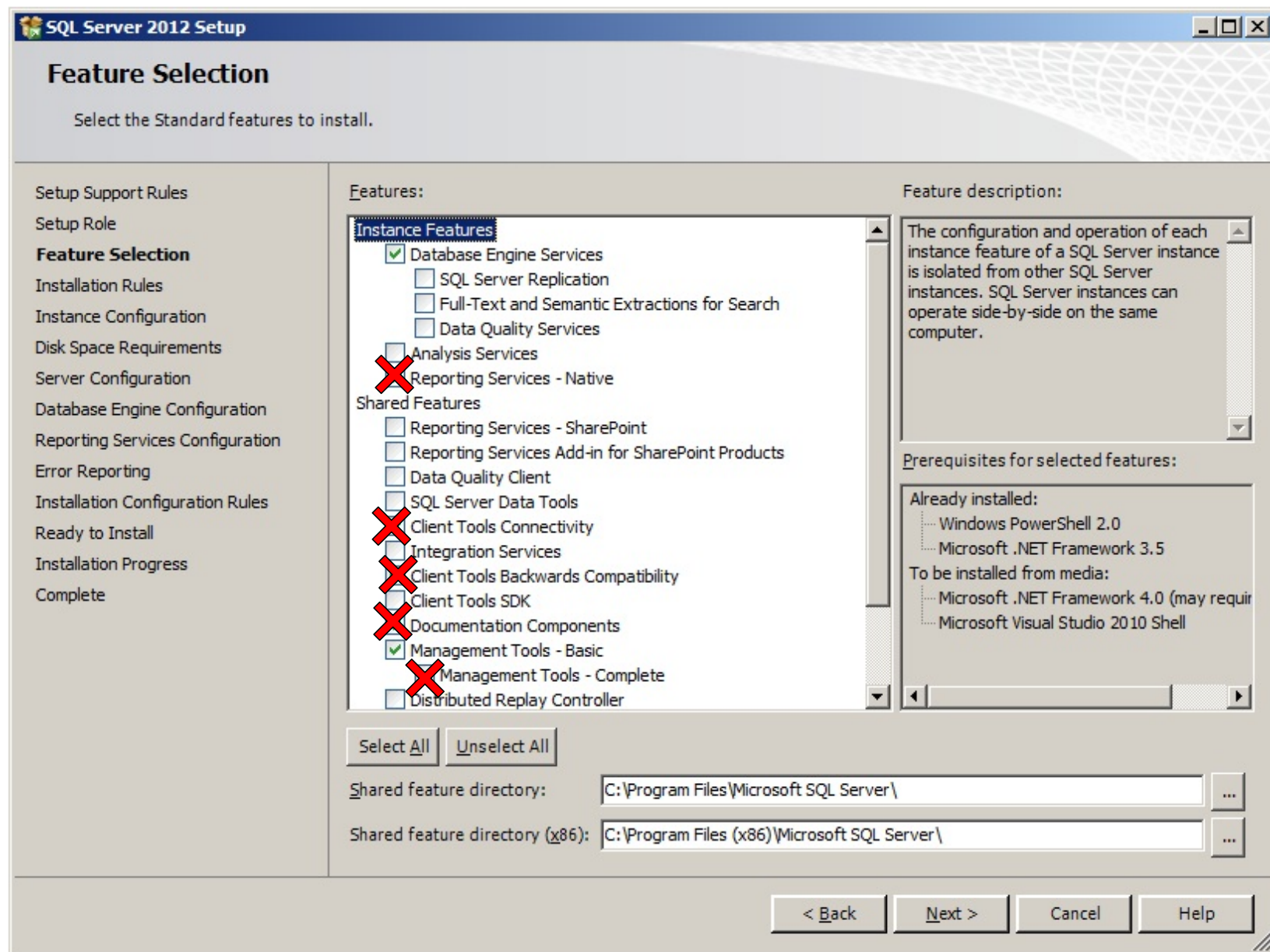


FIGURE 9: SELECT FEATURES

11. Click **Next**. The **Installation Rules** windows appears.

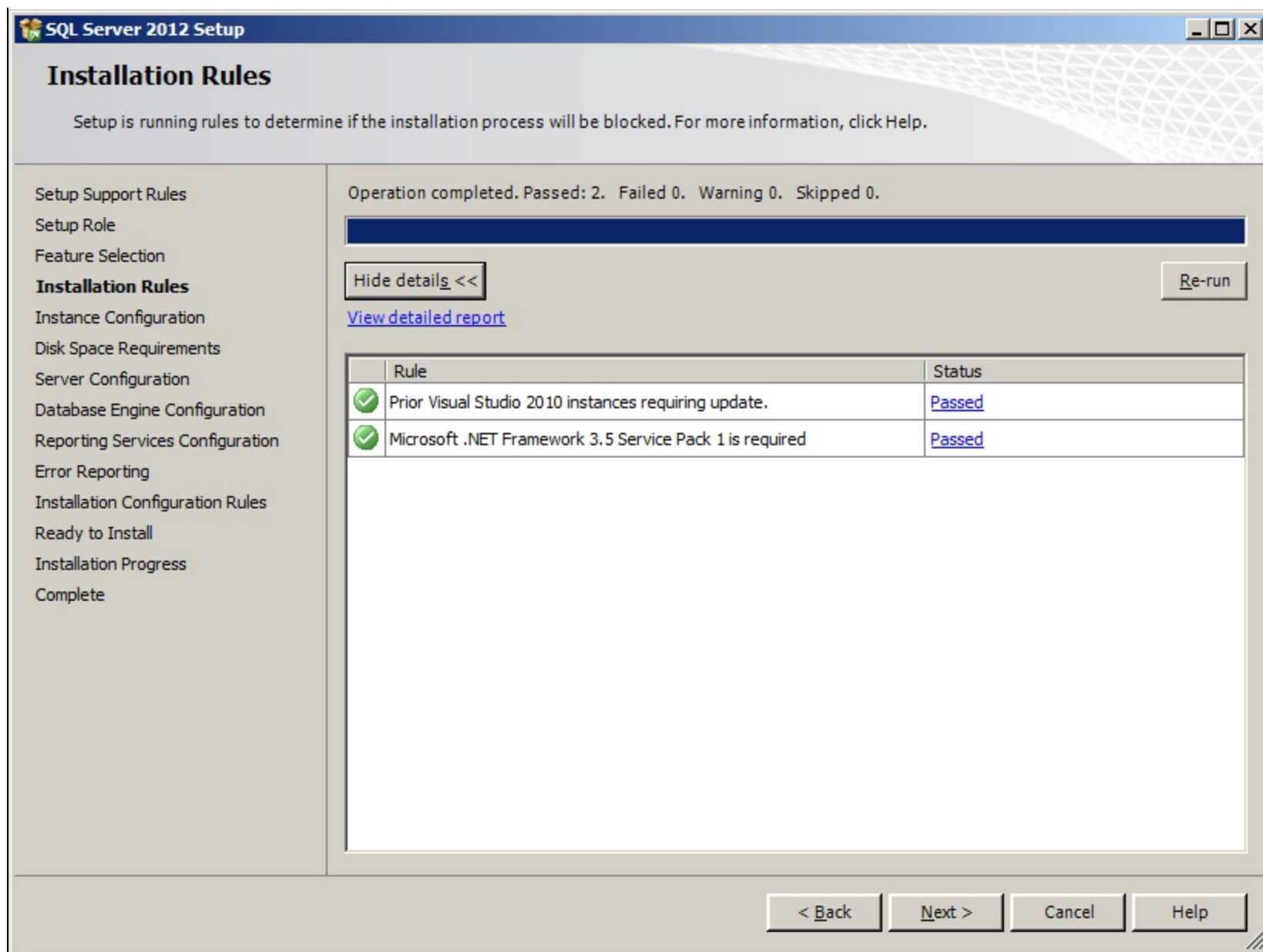


FIGURE 10: SELECTED FEATURES

12. On the **Instance Selection** dialog box, click **Default instance** (Figure 11 below). Wonderware Products currently do not support Named Instances.

- Accept the default **Instance ID** and **Instance Root Directory**.

Note: MS SQL 2012 Express Edition is supported for some System Platform 2012 R2 components. If you are installing MS SQL 2012 Express, make sure it actually installs the Default instance. There is an issue in the Express install that even if you select the Default

instance required by the Wonderware Historian, it still results in the database engine being installed as the instance named SQLEXPRESS.

As a workaround, you can select the option to install a Named instance and provide **MSSQLSERVER** as the instance name (see the information about CR L00090827 in the Historian's Readme file).

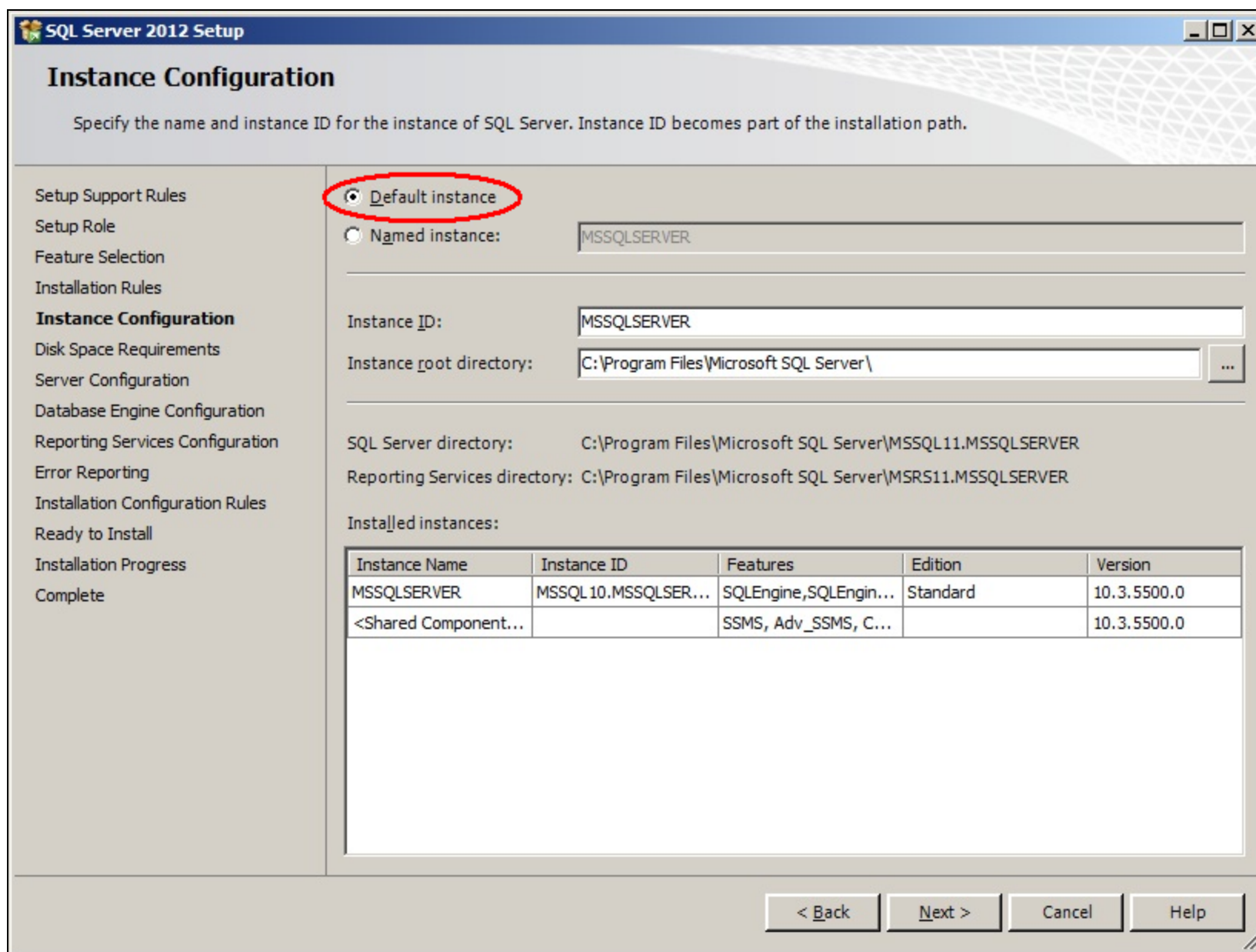


FIGURE 11: DEFAULT INSTANCE

13. Click **Next**.
14. Confirm the Disk Space Requirements and click **Next** (Figure 12 below).

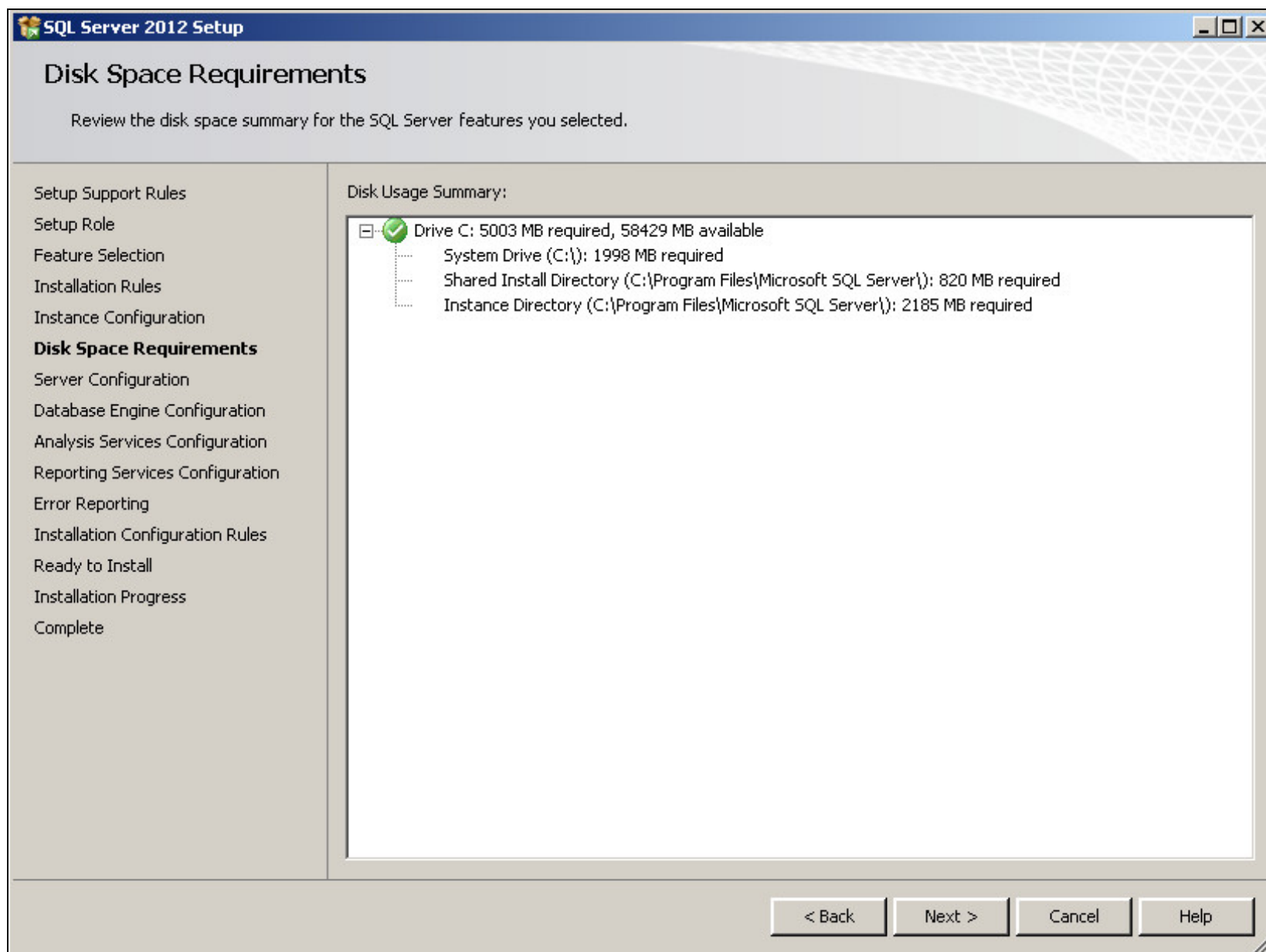


FIGURE 12: DISK SPACE REQUIREMENTS

15. In the **Server Configuration** window, accept the defaults and click **Next** (Figure 13 below).

Additionally you can use a local account by clicking the drop down in the Account Name and browsing for the local system account.

Most users should choose **NT AUTHORITY\NETWORK SERVICE**. However, corporate IT policies or network configurations may require you to specify a different account.

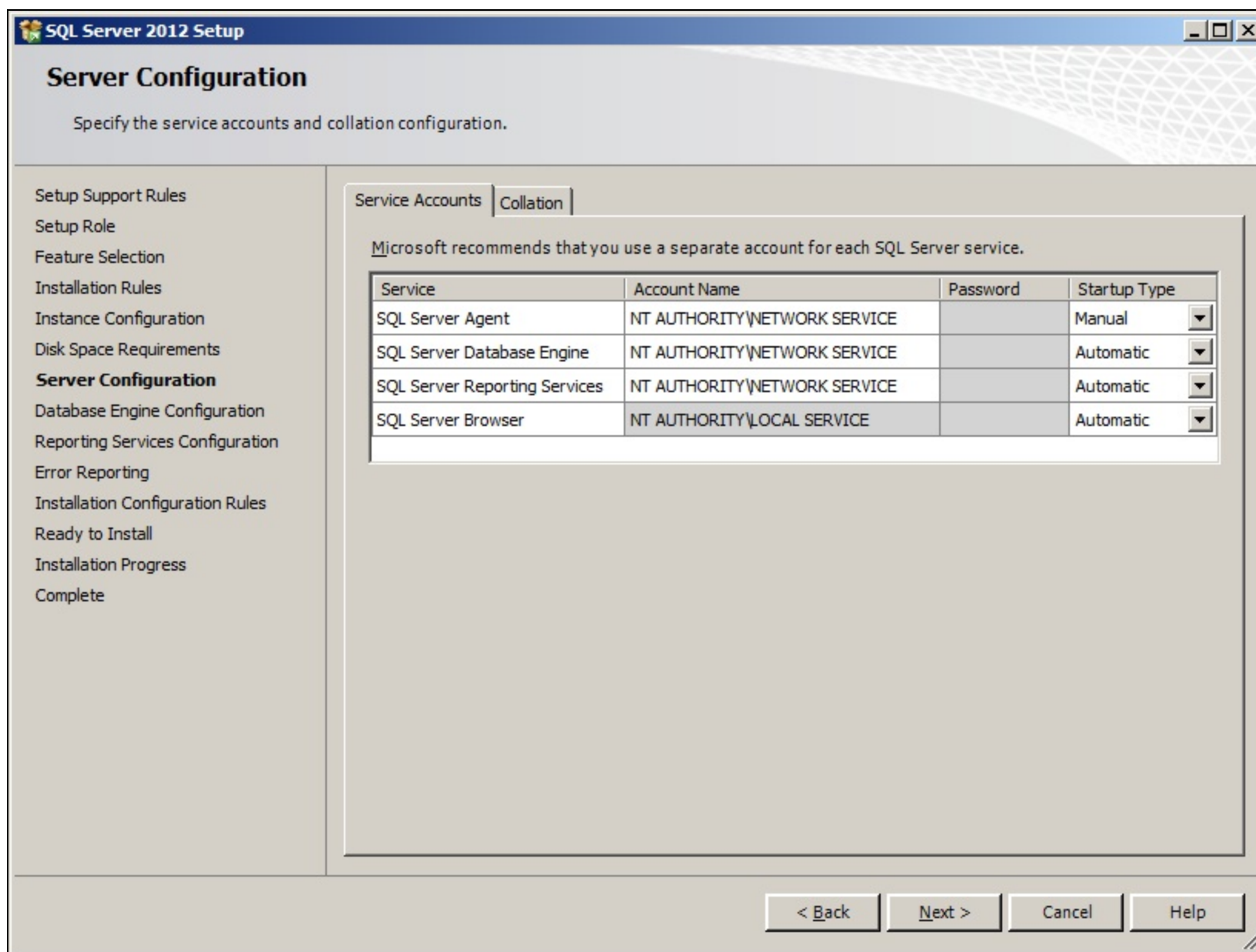


FIGURE 13: SERVER CONFIGURATION

16. If you are installing MS SQL Server on an English operating system, proceed to **Step 21 (below)** to continue the installation.

If you are installing MS SQL Server on a non-English operating system, click the **Collation** tab and select **SQL_Latin1_General** for the Database Engine collation. If you are also installing **Analysis Services**, its collation setting is **Latin1_General_CI_AS**

(Figure 14 below).

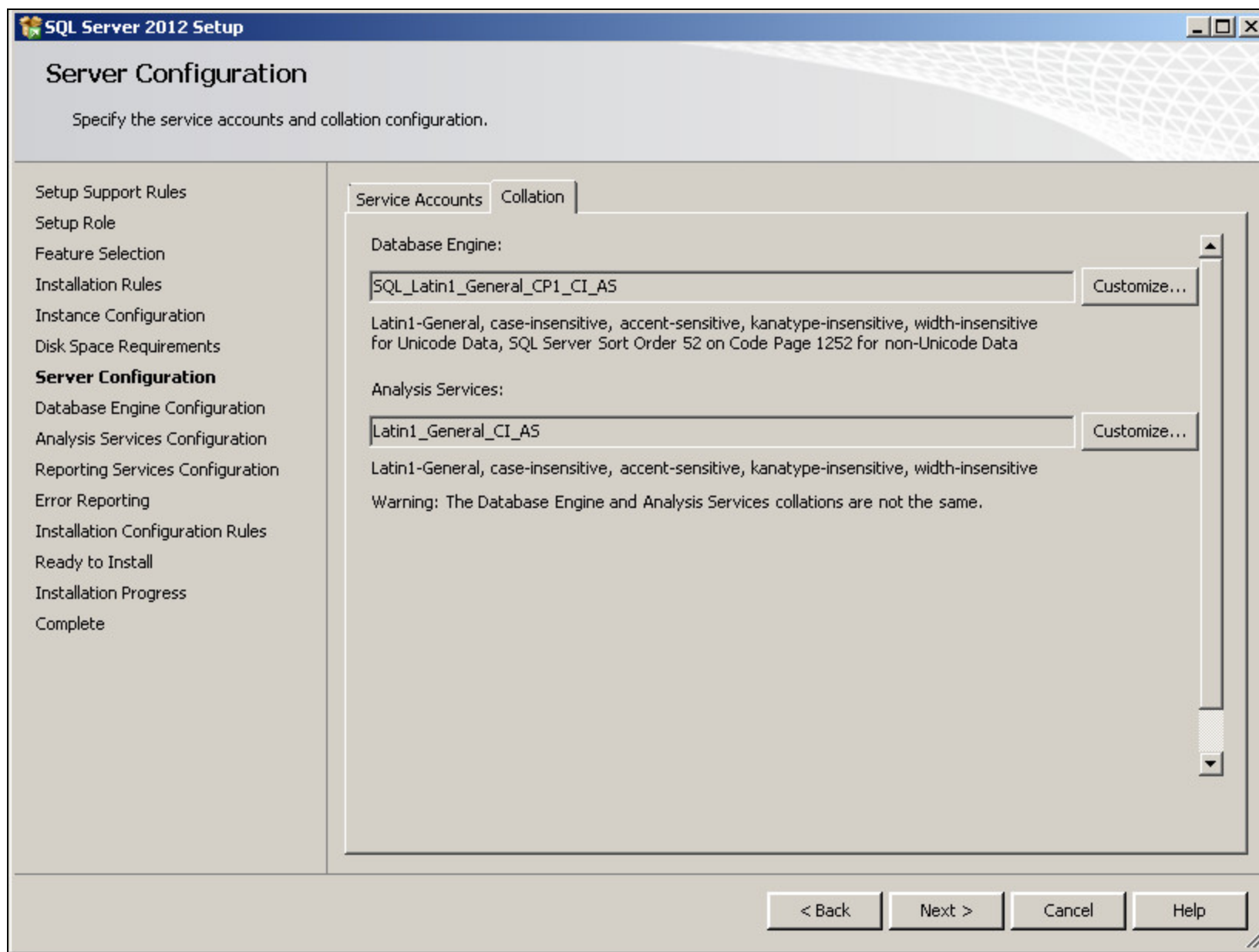


FIGURE 14: SERVER CONFIGURATION - COLLATION

17. If you find any other collation, change it to **SQL_Latin1_General** by clicking the **Customize** button next to Database Engine collation field.
18. Then, select **SQL_Latin1_General_CP1_CI_AS** from the list (Figure 15 below).

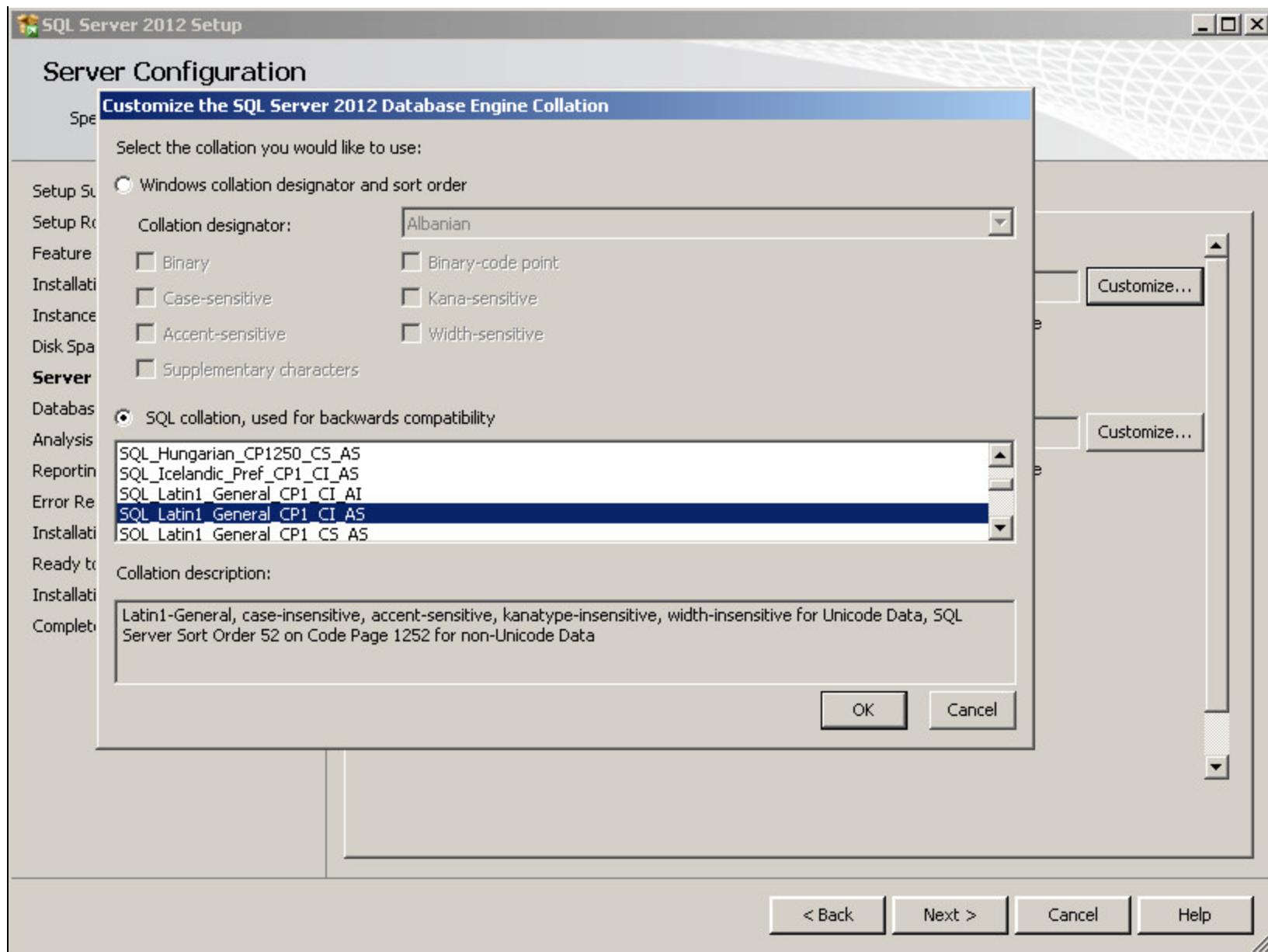


FIGURE 15: SERVER CONFIGURATION - CUSTOMIZE DATABASE ENGINE COLLATION

19. Click the **Customize** button next to Analysis Services collation and select **Latin_General** from the list (Figure 16 below).

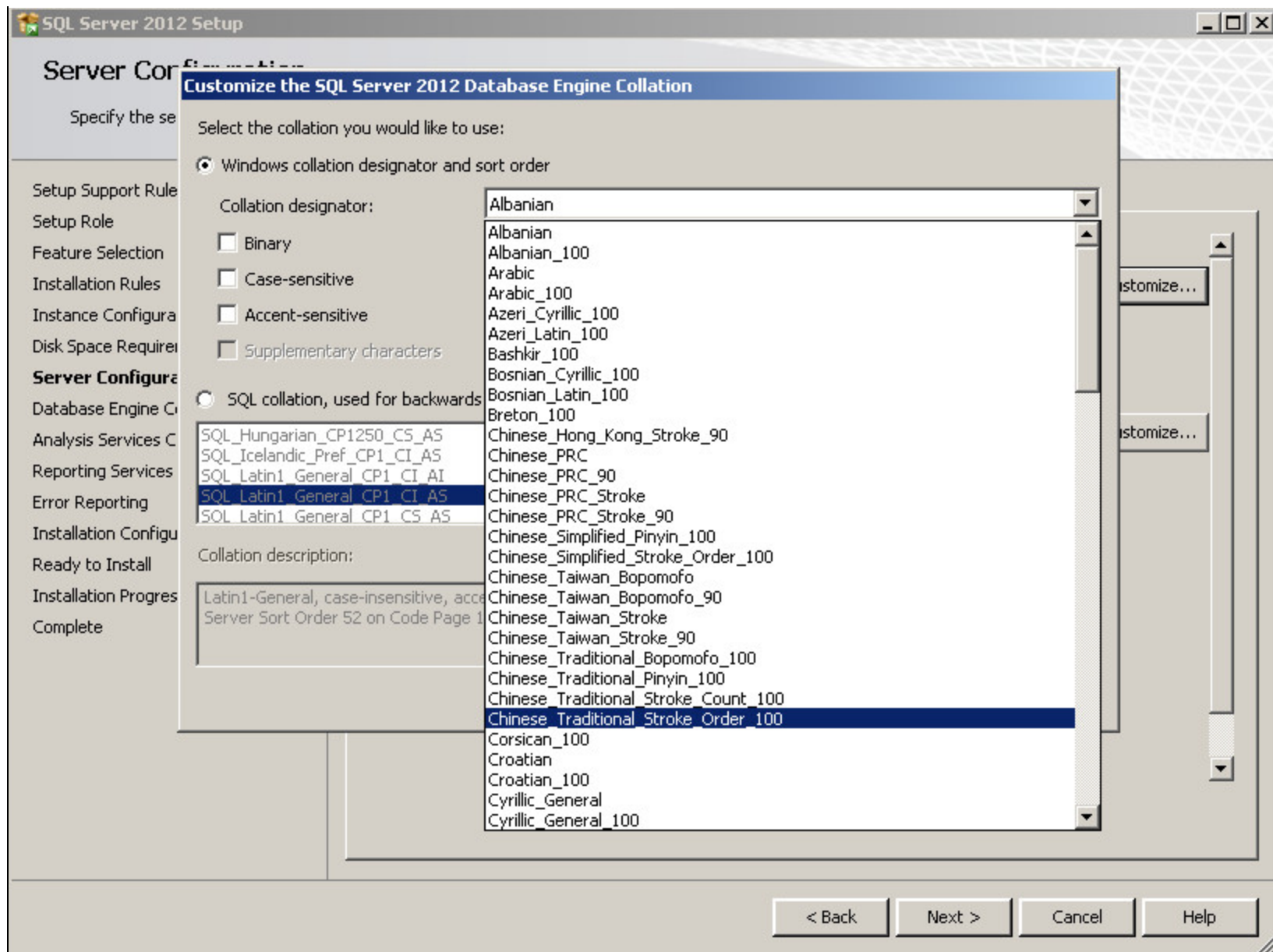


FIGURE 16: SERVER CONFIGURATION – CUSTOMIZE ANALYSIS SERVICES COLLATION

20. Click **OK** then **Next**.
21. On the Database Engine Configuration screen, select the **Mixed Mode (SQL Server authentication and Windows Authentication)** option in the **Account Provisioning** tab (Figure 17 below). Mixed Mode (SQL Server authentication and Windows authentication) is optional but strongly recommended.
22. Type a password for the built-in SQL System Administrator account (sa). You must configure the sa-level with a strong password for security purposes.

23. Click Add to add any users who you want to have administrator rights when using Windows authentication. In this example, the local computer's Administrator user is visible (Figure 17 below). You may also wish to click on the Add Current User button in order to add the user account of the person performing the installation.

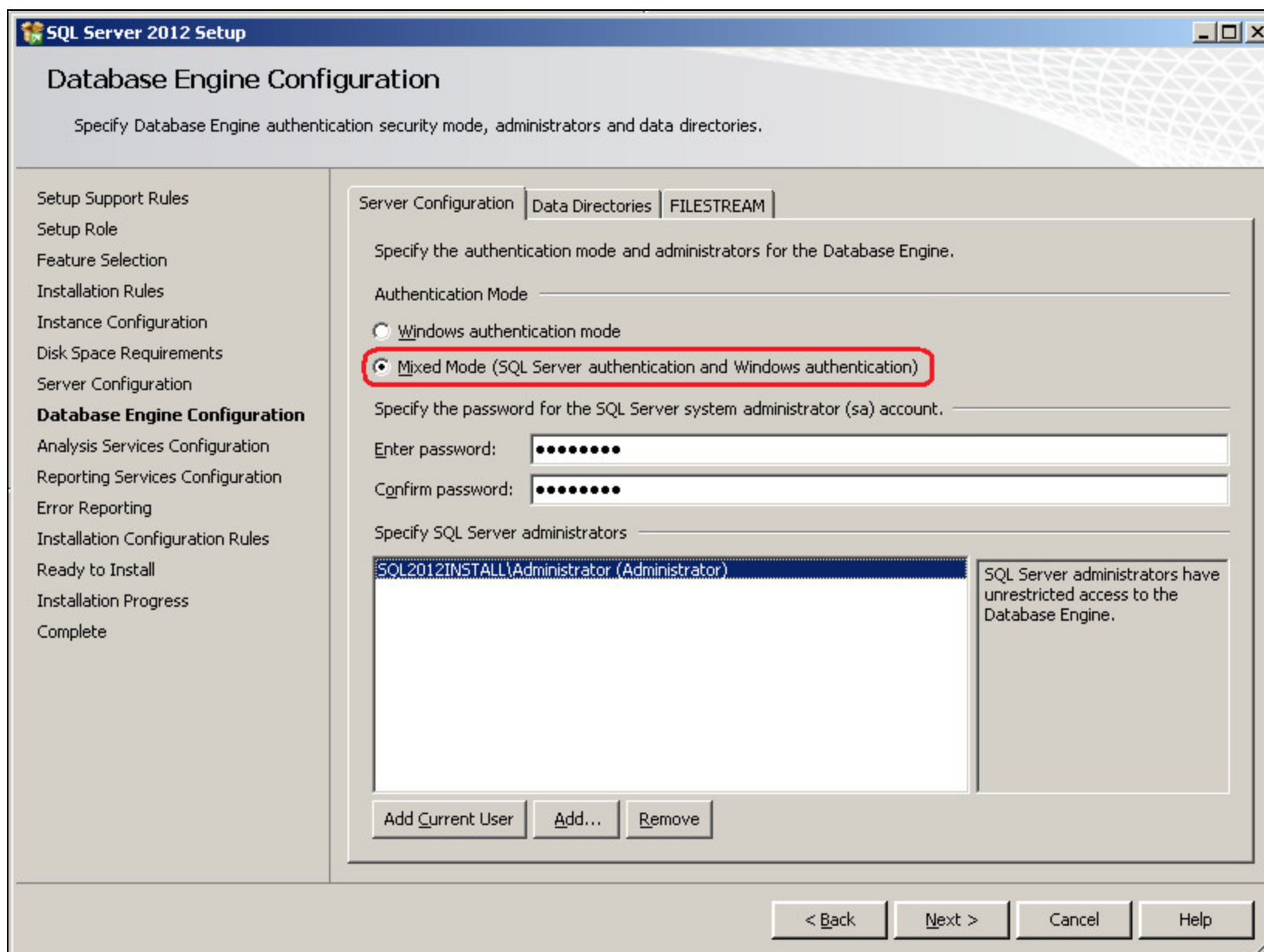


FIGURE 17: MIXED MODE AUTHENTICATION SETTING

25. Click the **Data Directories** tab to review all the directories then click **Next** (Figure 18 below).

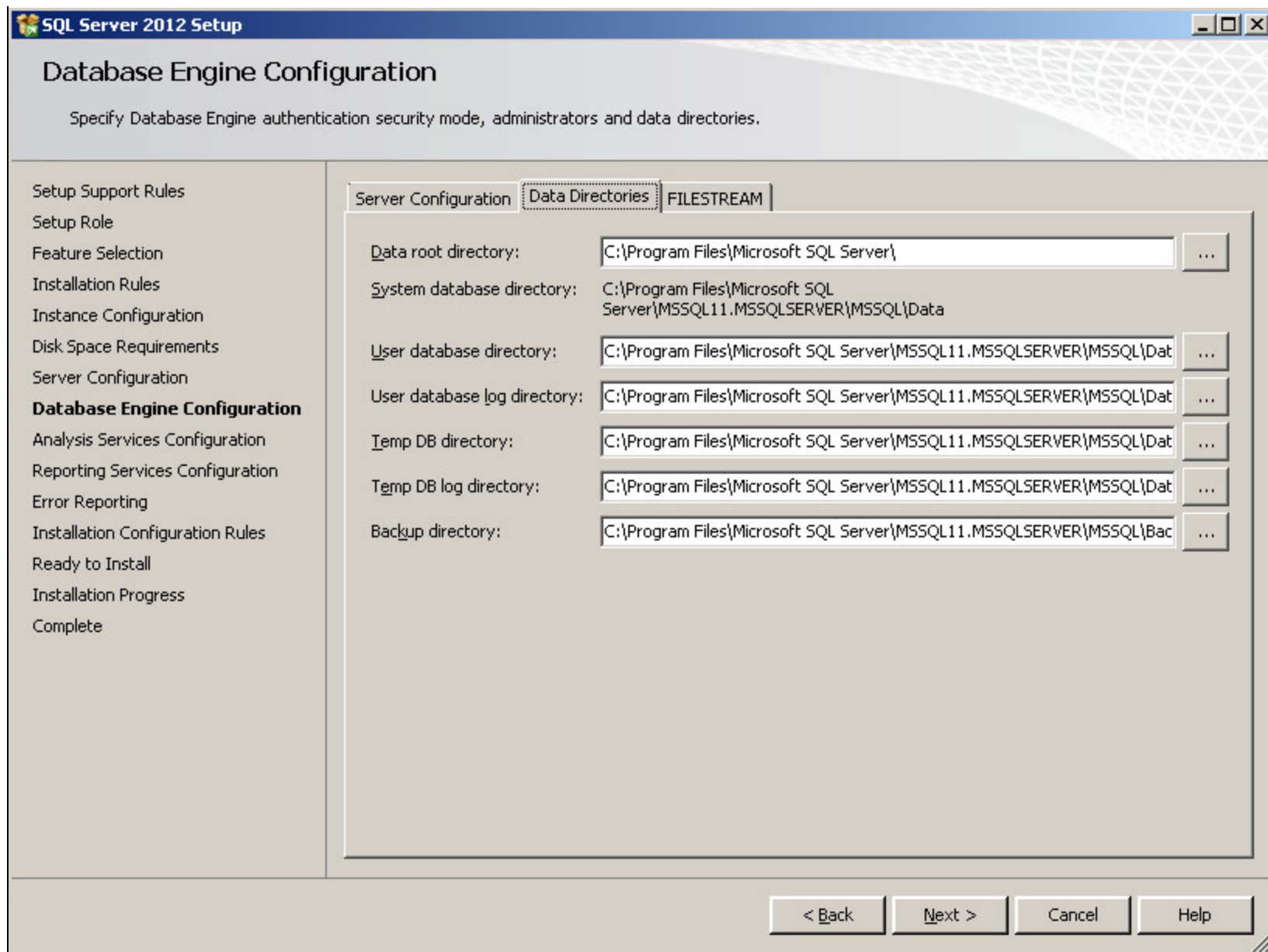


FIGURE 18: DATABASE ENGINE CONFIGURATION DATA DIRECTORIES

26. If you chose to install Reporting Services, click the **Install and Configure** option and click **Next** (Figure 19 below).

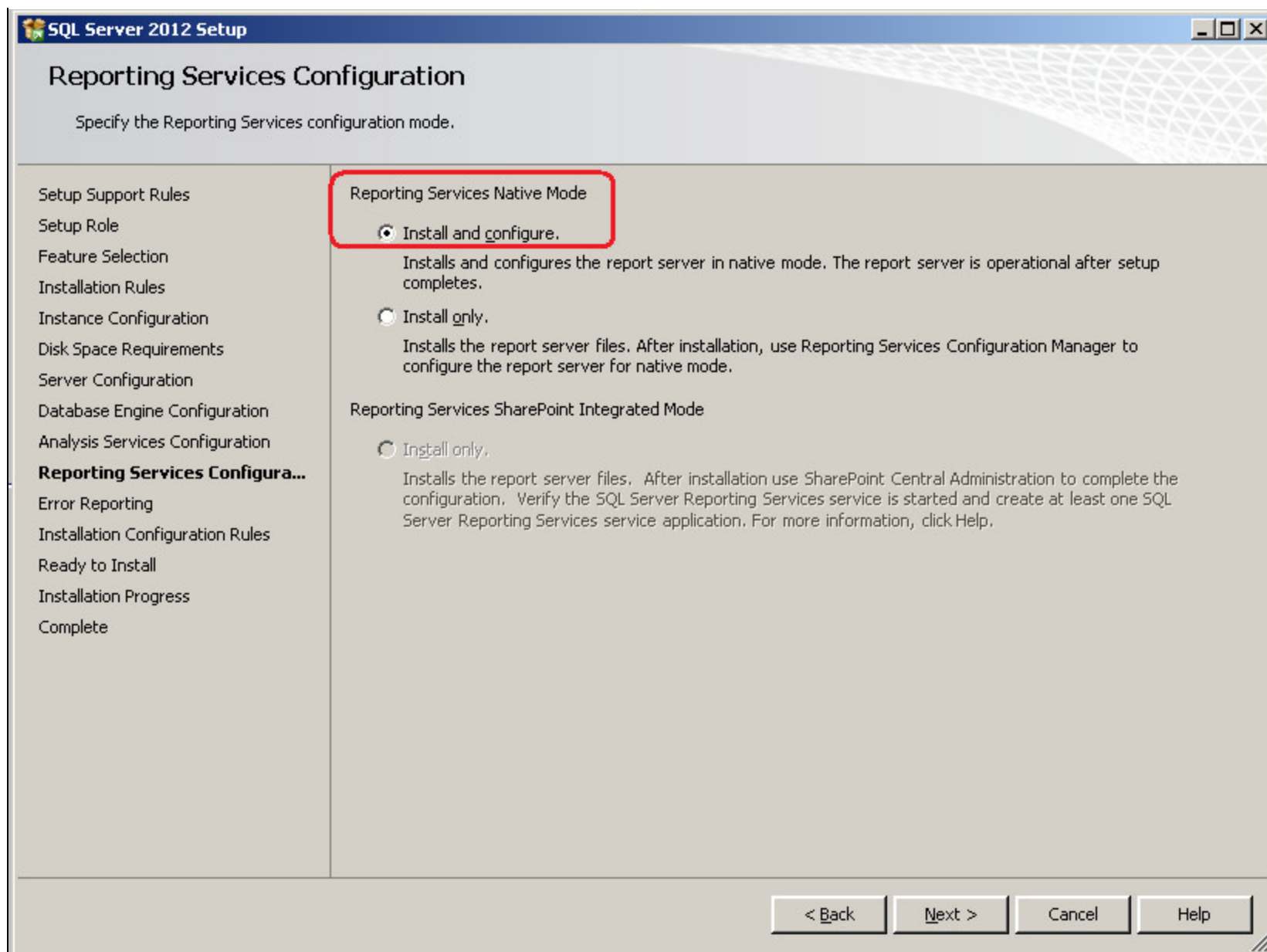


FIGURE 19: REPORTING SERVICES CONFIGURATION

27. Accept the default settings for the rest of the installation sequence. The installation will then proceed and you will see each module install.

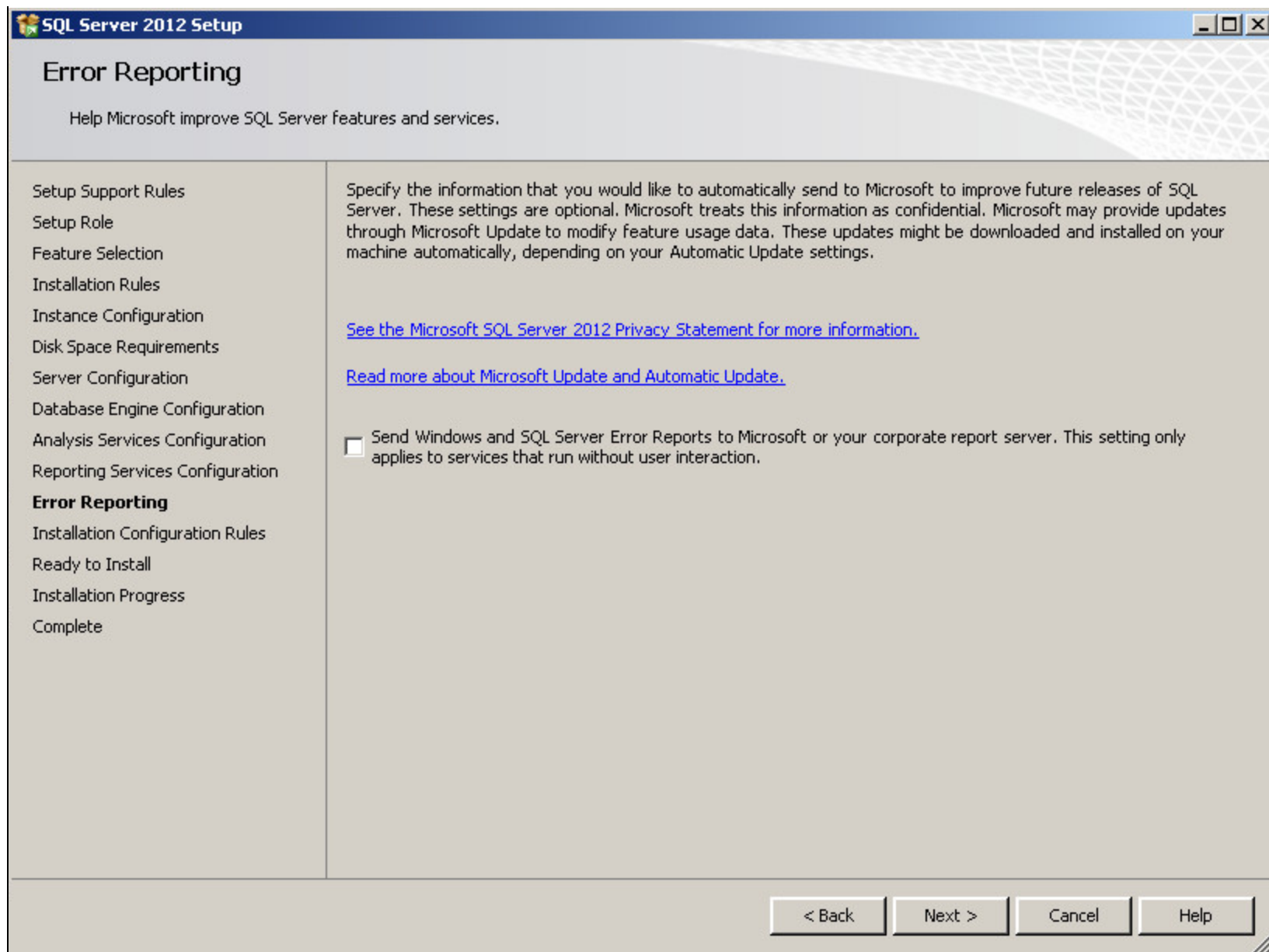


FIGURE 20: ERROR AND USAGE REPORTING

28. When the Installation Configuration Rules check is complete, click the **Show details** button, resolve any failures, and click **Next**.

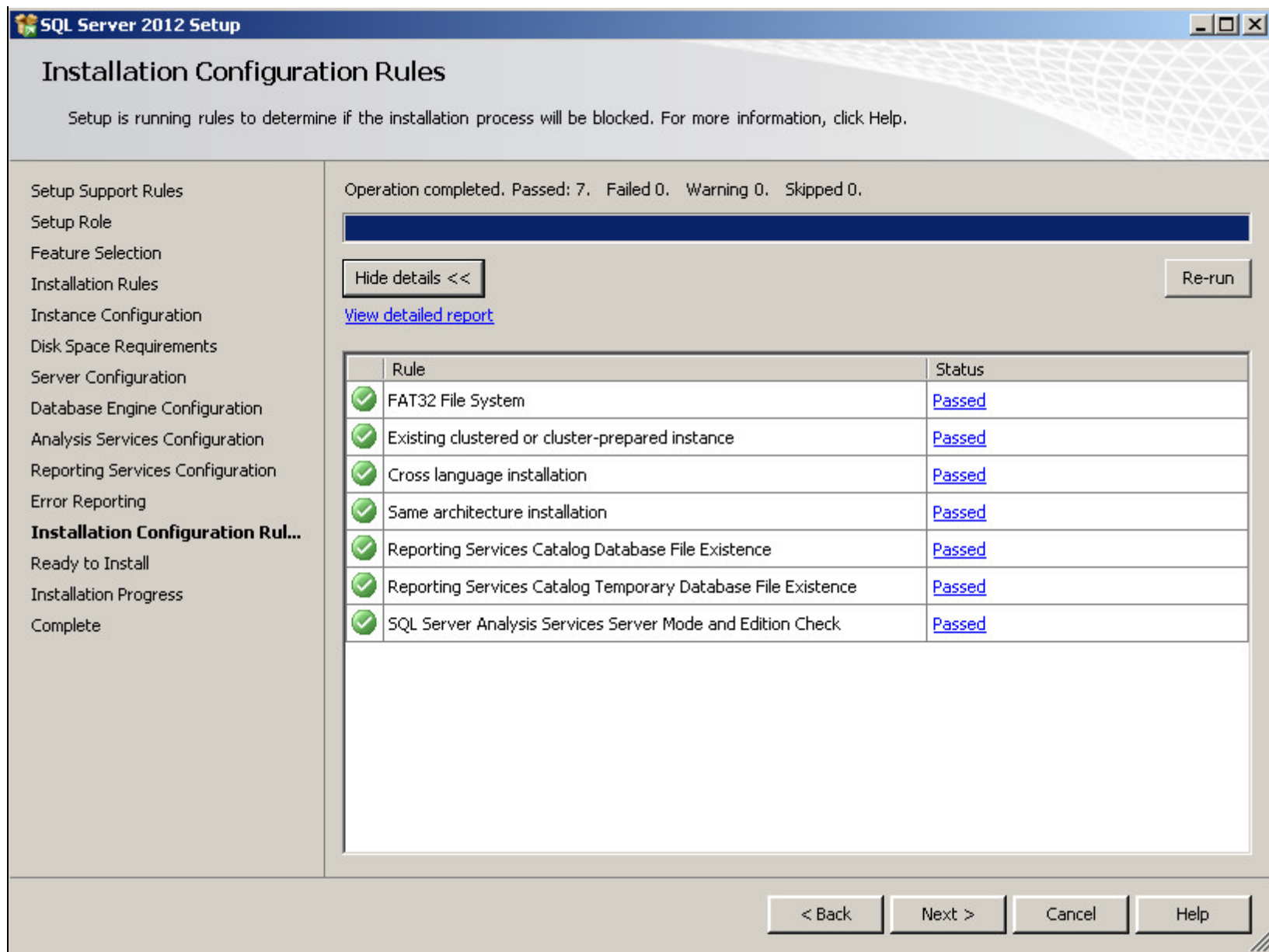
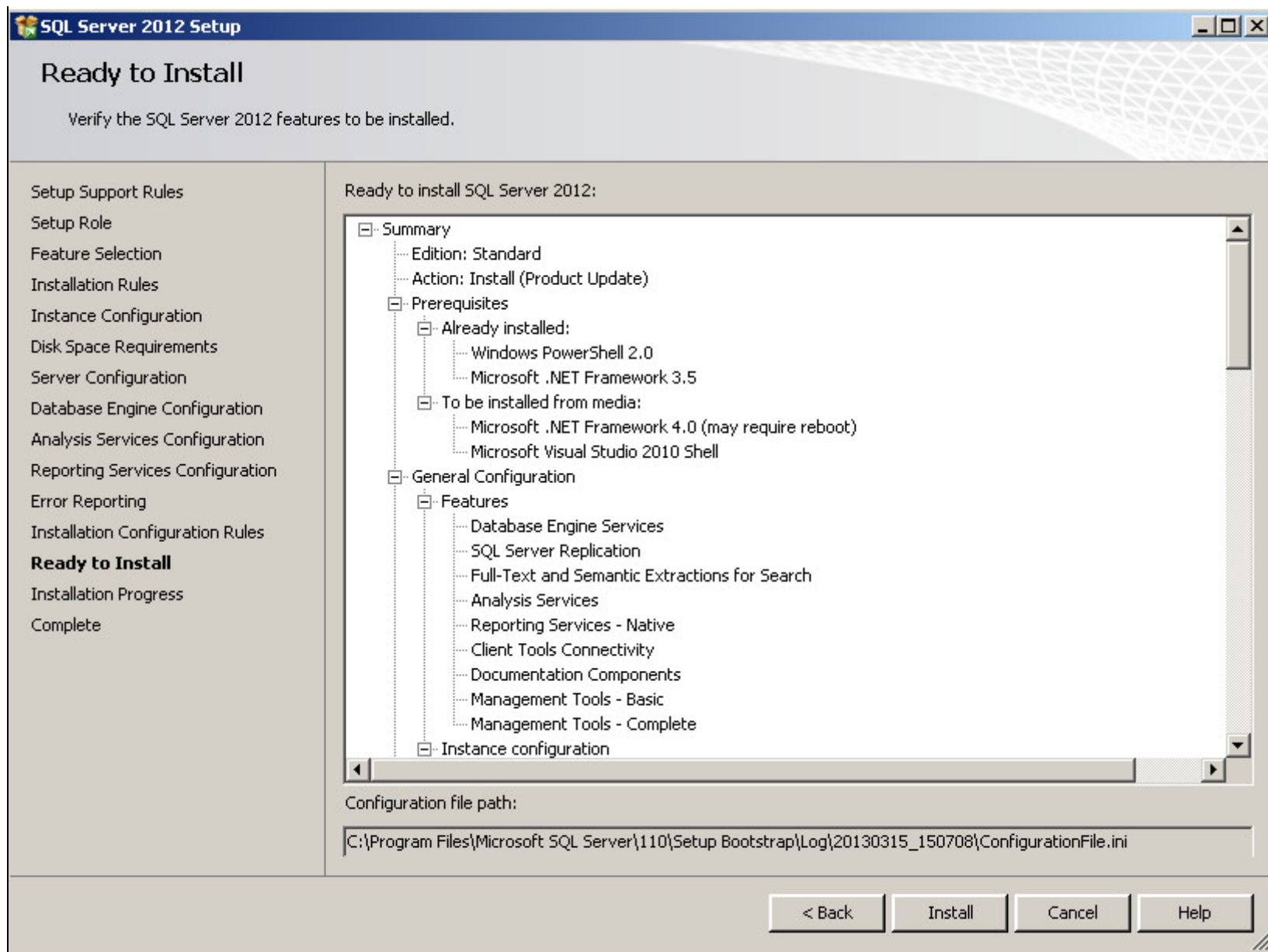


FIGURE 21: INSTALLATION RULES PASSED

29. On the **Ready to Install** screen, click **Install** (Figure 22 below).

**FIGURE 22: READY TO INSTALL**

30. When the setup process completes, all of the feature installations in the Installation Progress screen should show **Succeeded** in the **Status** column (Figure 23 below). Click **Close** to finish the installation.

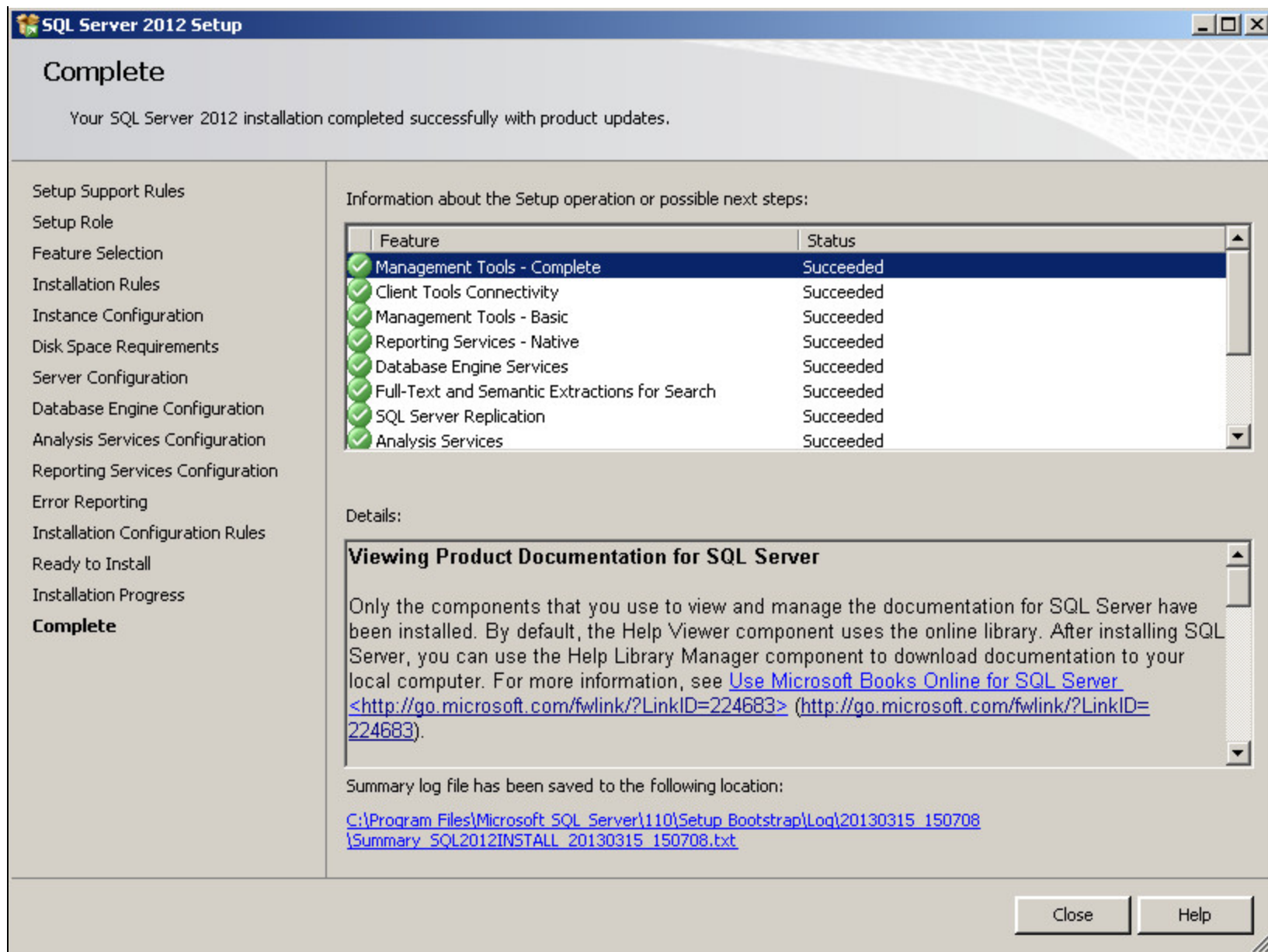


FIGURE 23: INSTALLATION COMPLETE

I. Whitelaw, C. Boutcher

Tech Notes are published occasionally by Wonderware Technical Support. Publisher: Invensys Systems, Inc., 26561 Rancho Parkway South, Lake Forest, CA 92630. There is also technical information on our software products at [Wonderware Technical Support](#).

For technical support questions, send an e-mail to wwsupport@invensys.com.

 [Back to top](#)

©2013 Invensys Systems, Inc. All rights reserved. No part of the material protected by this copyright may be reproduced or utilized in any form or by any means, electronic or mechanical, including photocopying, recording, broadcasting, or by any information storage and retrieval system, without permission in writing from Invensys Systems, Inc.

[Terms of Use.](#)